

Antineutrophil Cytoplasmic Antibodies (ANCA): Diagnostic Utility and Potential Role in the Pathogenesis of Vasculitis

Branko Malenica, Marija Rudolf, Ana Kozmar

Division of Immunology, Clinical Institute of Laboratory Diagnosis, Zagreb University Hospital Center, Zagreb, Croatia

Corresponding author:

Branko Malenica, MD, PhD

Division of Immunology

Clinical Institute of Laboratory Diagnosis

Zagreb University Hospital Center

Kišpatićeva 12

10000 Zagreb, Croatia

b_malenica@yahoo.com

Received: 22.07.2004.

Accepted: 18.09.2004.

SUMMARY Antineutrophil cytoplasmic antibodies (ANCA) are a heterogeneous group of circulating antibodies directed toward the cytoplasmic constituents of neutrophils and monocytes. ANCA have been described in various diseases including idiopathic systemic vasculitides, connective tissue diseases, inflammatory bowel diseases, autoimmune liver diseases, infectious diseases, and some drugs. ANCA recognize different target antigens such as proteinase 3 (PR3-ANCA), myeloperoxidase (MPO-ANCA), cathepsin G, lactoferrin, bactericidal/permeability-increasing protein (BPI), and some others. However, only PR3-ANCA and MPO-ANCA are closely associated with systemic vasculitides, in particular Wegener's granulomatosis, microscopic polyangiitis and its renal limited manifestation, and Churg-Strauss syndrome. Both *in vitro* and *in vivo* experimental data strongly support a pathogenic role for ANCA in vasculitis and glomerulonephritis.

KEY WORDS ANCA; PR3-ANCA; MPO-ANCA; vasculitis; pathogenesis

INTRODUCTION

Antineutrophil cytoplasmic antibodies (ANCA) are a heterogeneous group of circulating antibodies directed toward the cytoplasmic constituents of neutrophil granules and monocytes. ANCA were first described in 1982 by Davies *et al.* in a few patients with segmental necrotizing glomerulonephritis (1,2). The importance of this observation had not been recognized until 1985, when a distinct granular cytoplasmic fluorescence pattern, first called ACPA (anticytoplasmic antibodies) and later termed C-ANCA (cytoplasmic), was shown to be associated with Wegener's granulomatosis (WG) (3). Later, a second ANCA fluorescence pattern (later called perinuclear, P-ANCA) was described in patients with microscopic polyangiitis (MPA) (4) and

in patients with the idiopathic form of pauci-immune necrotizing crescentic glomerulonephritis (iNCGN) (5). These data have now been confirmed by many groups and support the view that ANCA-associated vasculitis and glomerulonephritis are indeed a distinct disease category (6-11). Subsequently, a third, less clearcut ANCA subtype (later termed 'atypical' or very perinuclear, a/P-ANCA) was described in a wide range of connective tissue diseases (CTD), inflammatory bowel (IBD) and autoimmune liver diseases, and infectious diseases (8-13).

Today the various ANCA serve as useful seromarkers. They can be used as clinical tools to aid in the diagnosis of WG and to distinguish new entities within the large spectra of vasculitis/glome-

lulonephritis and chronic inflammatory bowel and liver diseases. Recent studies support the hypothesis that ANCA and their target antigens may be implicated in the pathogenesis of these diseases, at least in vasculitis (7-11,14-20).

In this review we will evaluate background information about the evolution of ANCA methodology, the diagnostic application of ANCA testing, and the current understanding of the pathogenic role of different subtypes of ANCA. We also discuss ANCA in the context of cutaneous vasculitis.

ANCA TEST METHODOLOGY AND THEIR TARGET ANTIGENS

Currently, three basic assay principles are applied for the detection of ANCA. The original method of ANCA detection is indirect immunofluorescence (IIF) (21). While it remains the most widely used method, it does not identify the specific antigen responsible for the ANCA immunofluorescence. Enzyme-linked immunosorbent assay (ELISA) is used for target-specific ANCA determination (22). There are two popular types of such solid-phase assays. The target antigen can be coated directly onto the plastic reaction well (standard ELISA), or it can be linked to the reaction well *via* target antigen-specific mouse monoclonal or rabbit polyclonal antibodies (capture ELISA or sandwich ELISA) (23). Other detection methods such as radioimmunoassay (RIA), immunoblotting (IB) or immunoprecipitation techniques are not widely used for routine ANCA testing (24).

ANCA are routinely detected by IIF on ethanol-fixed neutrophils (21,25,26). Recent consensus statements on testing and reporting of ANCA recognize four different fluorescence patterns: a coarse granular cytoplasmic fluorescence with accentuation between the nuclear lobes – classic cytoplasmic or C-ANCA (Fig. 1A, e, f); a typically perinuclear fluorescence with some nuclear extension (Fig. 1B, e) and granular cytoplasmic fluorescence on formalin-fixed neutrophils (Fig. 1B, f) – perinuclear or P-ANCA; pronounced nuclear rim fluorescence with minimal nuclear extension, center of nucleus unstained (Fig. 1C, e) and non-reactivity with formalin-fixed neutrophils (Figure 1C; f) – very perinuclear or ‘atypical’ a/P-ANCA; and atypical ANCA which include all other IIF reactivity, most com-

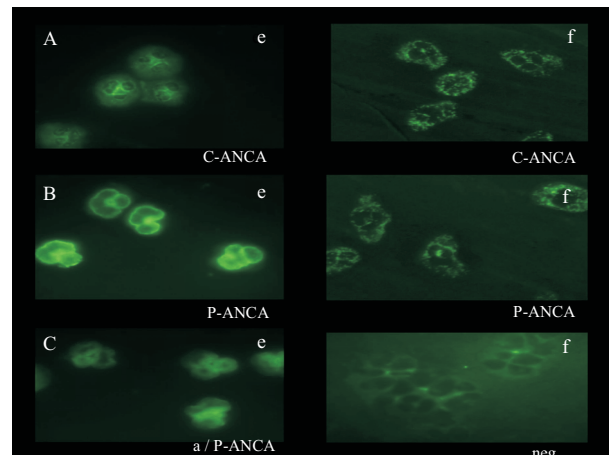


Figure 1. Characteristic fluorescence patterns of anti-neutrophil cytoplasmic antibodies (ANCA) on ethanol (e) and paraformaldehyde (f) fixed human neutrophil cytoplasm preparations. (A) a coarse finely granular fluorescence present throughout the cytoplasm and with accentuation between nuclear lobes (e and f)-cytoplasmic-C-ANCA; (B) a typically perinuclear fluorescence with some nuclear extension (e) and a granular cytoplasmic fluorescence on formalin fixed neutrophils (f)-perinuclear-P-ANCA; (C) a pronounced nuclear rim fluorescence, center of nucleus unstained, without the nuclear extension (e) and negative fluorescence on formalin fixed neutrophils (f) -"atypical" perinuclear -a/P-ANCA or very perinuclear P-ANCA.

monly a combination of cytoplasmic and perinuclear fluorescence (not shown).

The characteristic C-ANCA pattern has been recognized as a characteristic staining pattern produced by the sera of most patients with WG, but also of some 50% of patients with MPA and a minority of patients with other necrotizing vasculitis or idiopathic NCGN (27). Differentiating the classic granular cytoplasmic fluorescence pattern with interlobular accentuation (C-ANCA) from diffuse flat cytoplasmic fluorescence pattern without interlobular accentuation (C-ANCA-atypical) pattern may at times be difficult.

P-ANCA were originally described in patients with idiopathic and/or vasculitis associated NCGN (5). Further studies showed that the P-ANCA pattern could also be produced by the sera from patients with vasculitis without renal involvement and patients with IBD, autoimmune liver disease, infectious diseases such as HIV infection, and very rarely connective tissue disease (CTD) such as systemic lupus erythematosus (SLE) and rheumatoid arthritis (RA) (11,12). The perinuclear pattern

cannot always be distinguished from the nuclear staining pattern. Thus, discrimination between antinuclear antibodies (ANA) and P-ANCA is not possible in most sera that are ANA positive when isolated ethanol-fixed neutrophils are used as a substrate. In fact, antibodies reacting with nuclei of granulocytes only, and not with those of other substrates, have been detected in patients with RA long before ANCA had been described, and were named granulocyte-specific antinuclear antibodies (GS-ANA). Recent studies, however, have shown that the P-ANCA fluorescence pattern represents an artifact of ethanol fixation which allows for rearrangement of positively charged granule constituents around and on the negatively charged nuclear membrane (28). The use of crosslinking fixatives, such as paraformaldehyde, during the preparation of neutrophil substrates prevents the perinuclear rearrangement of charged antigens and thereby allows for distinction of true P-ANCA from ANA with or without granulocyte specificity. On formalin-fixed neutrophils, true P-ANCA will display diffuse granular cytoplasmic staining, whereas an ANA-containing serum sample will again display nuclear staining. The simultaneous testing for ANA using standard substrates, such as HEp-2 cells, is not sufficient for this distinction because P-ANCA and ANA can occur simultaneously.

'Atypical' P-ANCA with different frequency were found in patients with IBD, autoimmune liver diseases and infectious diseases such as HIV infection (11,12). Distinction between these two P-ANCA similar fluorescence patterns is possible on formalin-fixed neutrophils where the 'atypical' P-ANCA pattern displays non-reactivity, whereas true P-ANCA display diffuse granular cytoplasmic staining (Fig. 1).

IIF should be performed on serum samples from all 'new' patients, since about 10% of ANCA-positive serum samples in patients with WG or MPA can be demonstrated only by IIF.

To circumvent the problems associated with IIF, i.e. the lack of target antigen specificity and operator dependence, target antigen-specific solid-phase immunoassays have been used. ELISA and IB techniques enable identification of many target antigens that are associated with autoantibodies causing different immunofluorescence patterns (Table

1). The target antigen recognized by most C-ANCA positive sera has been identified as proteinase 3 (PR3), a neutral serine protease present in the azurophilic granules of neutrophils. Proteinase 3 has been cloned and shown to be a 29 kD glycoprotein of 228 aminoacids (29-33). Human antibodies to PR3 appear to recognize conformational determinants on the molecule (34). Very rarely, sera with PR3-ANCA reactivity can also cause P-ANCA fluorescence pattern (35). Myeloperoxidase (MPO) represents the P-ANCA target antigen with the greatest clinical utility because of the frequent association of MPO-ANCA with MPA and iNCGN (36). All serum samples should be assayed in PR3-ANCA and MPO-ANCA ELISAs, since about 5% of serum samples are positive only by ELISA. However, many sera that produce P-ANCA or a/P-ANCA staining pattern on ethanol-fixed neutrophils do not contain autoantibodies to MPO or PR3 as tested by antigen-specific assays. It has now been recognized that a number of these sera contain antibodies to other granular constituents of neutrophils. In particular, autoantibodies have been demonstrated to human leukocyte elastase (HLE) (37,38), cathepsin G (CG) (39-42), lactoferrin (LF) (43-46), lysozyme (47), azurocidin (48), -enolase (49-51), actin (52-54), tropomyosin (53, 54), high motility groups of nonhistone chromosomal proteins 1 and 2 (HMG1 and HMG2) (55-57), bactericidal/ permea-

Table 1. Target antigens for antineutrophil cytoplasmic antibodies (ANCA)

ANCA target antigen	Immunofluorescence pattern
PR3	C-ANCA, very rarely P-ANCA
MPO	P-ANCA, very rarely C-ANCA
Eosinophilic peroxidase	a/C-ANCA
HLE	P-ANCA
-Enolase	P-ANCA
Azurocidin	P-ANCA
Cathepsin G	P-ANCA
Lactoferrin	P-ANCA
Lysozyme	P-ANCA, a/C-ANCA
Actin	a/C-ANCA, a/P-ANCA
Tropomyosin	a/C-ANCA, a/P-ANCA
HMG1/2	P-ANCA
BPI	a/C-ANCA, a/P-ANCA
Lamin B1	a/P-ANCA
Histone H1	a/P-ANCA

bility-increasing protein (BPI) (58-61), lamin B1 (13, 47) and histone H1 (13,62).

DIAGNOSTIC UTILITY OF ANCA TESTING

Since the first description of ANCA, the different ANCA fluorescence patterns have been described in various diseases. In addition to systemic vasculitides, this list now includes various CTDs, IBD, autoimmune liver diseases, infections, malignancies, myelodysplastic processes and many others, even diabetes mellitus. The interpretation of many reports is compromised by limited information about the methods utilized for ANCA detection. Reports that include data on different fluorescence patterns and specific target antigens allow for more meaningful analysis of clinical associations and utility.

ANCA in primary systemic vasculitides

The most clear-cut association of a disease with ANCA directed against a specific target antigen remains the association between WG and PR3-ANCA (Table 2). Between 80% to 95% of all ANCA found in WG are C-ANCA (8,12,63-65). The use of more sensitive PR3-ANCA specific methods (capture ELISA) of detection has confirmed that the C-ANCA in WG is almost always associated with anti-PR3 (23,66). It has been estimated that 5%-20% of ANCA in WG may be P-ANCA, which are mostly directed against MPO (67,68) and only rarely against other known target antigens such as human leukocyte elastase (69). The sensitivity of C-ANCA/PR3-ANCA for WG is related to the extent, severity and activity of disease (64). In a meta-analysis of C-ANCA in WG, the pooled sensitivity was 91% for the subset of patients with active disease compared to 63% for those with inactive disease

Table 2. Disease associations of C-ANCA (PR3-ANCA) and P-ANCA (MPO-ANCA) in systemic vasculitis

Patients with	Sensitivity of			
	C-ANCA	PR3-ANCA	P-ANCA	MPO-ANCA
WG	80-90	85	5-20	24
MPA	35-45	26	40-50	58
iNCGN	30-40	50	46-65	58
CSS	14-33	33	33-42	50
PAN	3-10	0	5-30	38

(70). Some longitudinal studies have shown that titers of C-ANCA/PR3-ANCA correlate with clinical disease activity (71-74), although this has been disputed by other authors (75,76). Additionally, disease relapse can be anticipated and prevented by intensifying immunosuppression in response to rising titers (76,77). Persistent or intermittent C-ANCA positivity is an independent risk factor for relapse (78-81).

Most patients with MPA are ANCA positive, either with specificity for MPO or for PR3 (5,11,12,64,67). The interpretation of data about the association of ANCA and MPA is complicated by the lack of consensus about the definition of MPA. Since there continues to be controversy about which features clearly separate MPA from PAN, it remains unclear whether ANCA also occur in some patients with classic PAN (82). However, most data support the perception that MPA, which is frequently associated with GN and/or pulmonary capillaritis, is often associated with MPO-ANCA, whereas classic PAN is not (64,83,84). The relation between titers of ANCA and disease activity has not been studied systematically in MPA (70,78,80,85).

Other target antigens for ANCA, such as BPI and azurocidin, have recently been detected in patients with systemic vasculitis (48,58,60,86). These antibodies may also simultaneously occur with PR3- or MPO-ANCA.

Most patients with iNCGN are positive for anti-MPO, the remaining generally being positive for anti-PR3 (5,11,12,68,87). Many of these patients have constitutional symptoms together with signs of systemic involvement so that the distinction between WG, MPA and iNCGN is far from absolute.

ANCA have been detected with variable frequency in patients with CSS (88-90). Both MPO and PR3 have been described as target antigens.

Although Ig-A-ANCA have occasionally been noted in Henoch-Schönlein purpura (91-93), most studies have not shown this to be a significant association with regard to either frequency or clinical feature of illness (94).

Patients with Kawasaki disease may have ANCA and antiendothelial cell antibodies (AECA) but these antibodies occur in the minority of pa-

tients and do not occur more often than in other pediatric febrile illnesses (95,96).

Other forms of vasculitis, particularly giant cell arteritis, Takayasu arteritis and Behcet's disease, are not ANCA-associated (97,98).

ANCA in connective tissue diseases (CTD)

ANCA have been described in patients with a variety of CTD, including RA (99-104), SLE (105-107), PM/DM (108), juvenile chronic arthritis (109), reactive arthritis (110,111), relapsing chondritis (112,113) and anti-phospholipid syndrome (108). ANCA in scleroderma is uncommon and is of doubtful clinical significance (114,115). The fluorescence patterns in CTD are mostly P-ANCA. To a lesser extent, atypical fluorescence patterns may be found, and true C-ANCA patterns are rare (108,116). A multitude of target antigens, including LF, HLE, LZ, CG, MPO, HMG1 and HMG2, have been described in these diseases (Table 3). However, a significant proportion of target antigens for ANCA encountered in this setting remain to be identified. PR3-ANCA occur extremely rarely in these patients (116).

Table 3. Target antigens of ANCA in connective tissue diseases (CTD)

Patients with	Target antigens in ELISA (%)				
	PR3	MPO	LF	CG	HMG1/2
SLE	0	1	11	37	37/18
RA	0	1	35	33	40/25
SS	0	0	0	22	44/11
SSc	0	18	5	5	36/18
PM/DM	0	0	27	9	18/18

SLE=systemic lupus erythematosus; RA=rheumatoid arthritis; SS=Sjögren's syndrome; SSc=systemic sclerosis; PM/DM=polymyositis/dermatomyositis; PR3=proteinase 3; MPO=myeloperoxidase; LF=lactoferrin; CG=cathepsin G; HMG1/2=high mobility group (HMG) nonhistone chromosomal proteins 1 and 2

While patients with CTD have an increased frequency of vasculitis, data to suggest that ANCA positivity enhances the risk of vasculitis are contradictory (108,116). Non-vasculitis aspects of rheumatic disease activity, severity and chronicity also fail to consistently correlate with ANCA status (100,102,103,108,116). Consequently, there is little clinical utility for ANCA testing in patients with CTD

in whom one of the ANCA-associated systemic vasculitides is not suspected.

ANCA in inflammatory bowel disease (IBD) and autoimmune liver diseases

Shortly after the discovery of ANCA in WG and MPA, ANCA were discovered in IBD and autoimmune liver diseases (13,117-125). On IIF these ANCA produce perinuclear and less often atypical cytoplasmic fluorescence patterns. MPO is not a prominent target antigen for these P-ANCA (Table 4). A multitude of other target antigens, particularly LF, CG, actin, BPI, catalase and HMG1/2, have been identified as target antigens in IBD (13,39-41,45,126-128). Data from most series suggest that the prevalence of P-ANCA is higher in ulcerative colitis (40%-80%) than in Crohn's disease (10%-40%). Some studies have suggested a higher association of ANCA in patients with Crohn's disease and colonic involvement (129,130), treatment-resistant left-sided ulcerative colitis (131) or chronic pouchitis (132,133). The overlap of ANCA findings between the various clinical groups of IBD patients is significant. Therefore, ANCA testing does not facilitate the differential diagnosis of patients with IBD. Neither is the correlation of titers with disease activity sufficiently reliable to be useful for monitoring IBD activity (13,123,124,129).

ANCA are also frequently found in patients with primary sclerosing cholangitis (PSC) and autoimmune hepatitis type 1 (50%-90%). ANCA are generally not associated with primary biliary cirrhosis

Table 4. Target antigens of ANCA in patients with inflammatory bowel and autoimmune liver diseases

Patients with	Target antigen in ELISA (%)						
	MPO	LF	CG	Actin	BPI	Catalase	HMG1/2
UC	2-29	5-50	0-1	NT	43	38	32
CD	0-6	1-21	0-2	NT	26	26	26
PBC	NT	NT	NT	NT	25	NT	NT
PSC	0-33	0/50	NT	NT	35	NT	NT
AIH type 1	NT	8	0	47-52	29	NT	NT

UC=ulcerative colitis; CD=Crohn's disease; PBC=primary biliary cirrhosis; PSC=primary sclerosing cholangitis; AIH=autoimmune hepatitis; BPI=bactericidal/permeability increasing protein; HMG1/2=high mobility group (HMG) nonhistone chromosomal proteins 1 and 2; NT=not tested

(13,121,122,134-136). ANCA reactivity in autoimmune hepatitis type 1 most often appears to be directed to actin (13,54,136).

ANCA in infectious diseases

ANCA, mainly with 'atypical' cytoplasmic or P-ANCA immunofluorescence patterns, have been described in human immunodeficiency virus (HIV) infection (137,138), cystic fibrosis with bacterial airway infections (139,140), chromomycosis (141), acute malaria (42,142), invasive amebiasis (143), and in patients with some other infections (144,145). These ANCA are not caused by antibodies against PR3 and MPO. A recent report has described the occurrence of BPI-IgG-ANCA and BPI-IgA-ANCA in the majority of patients with cystic fibrosis (146). Anti-BPI titers were directly related to the severity of airway destruction. Cathepsin G has been identified as the most significant target antigen for ANCA, causing an atypical cytoplasmic fluorescence pattern in patients with acute malaria (42,142). Invasive amebiasis is the only infection that has been reported to be associated with PR3-ANCA (143). The presence of autoantibodies causing cytoplasmic fluorescence on ethanol-fixed neutrophils from patients with infection shows the importance of excluding infectious processes before initiating immunosuppressive therapy. These observations may suggest that ANCA, which occur transiently in the setting of infection, and the persistent ANCA in patients with vasculitis may be the results of molecular mimicry in susceptible hosts (147). Subsequent diversification of T- and B-cell responses ('epitope spreading') may lead to response against different epitopes on the same target molecule (intramolecular spreading) or may extend to other molecules (intermolecular spreading) (148,149).

ANCA associated with drugs

Increasing numbers of case reports and reports of small series have identified associated diseases that are presumed to be induced by certain drugs with ANCA reactivity. The following drugs have been connected to autoimmune clinical sequels and ANCA: hydralazine-induced lupus with anti-MPO and elastase antibodies, hydralazine-associated vasculitis with anti-MPO and anti-LF antibod-

ies and minocycline-induced arthritis, fever, and livedo reticularis with anti-MPO antibodies (150-156). Vasculitis occurring after propylthiouracil therapy has been associated with ANCA specificities to several different target antigens, including PR3, MPO and elastase (152,153,157-160).

Diagnosis of cutaneous manifestations of Wegener's granulomatosis (WG) and microscopic polyangiitis (MPA)

WG and MPA are the prototype systemic diseases associated with ANCA. Cutaneous lesions may occur in up to one-half of patients with WG (Table 5) (161-163). In general, cutaneous lesions are more likely in patients who have multiple organ system involvement. Cutaneous lesions may also be the first manifestation of WG and may not be vasculitic. Patients may develop cutaneous lesions before the onset of upper airway or pulmonary or renal symptoms, making the diagnosis of WG very difficult for dermatologist. Some patients may develop more than one type of cutaneous lesions, which may change over time or with treatment. In order to best utilize laboratory testing for ANCA, it is essential to recognize the cutaneous patterns of WG and MPA, and, more important, to recognize those disorders that can simulate cutaneous lesions seen in WG (Table 6). Specific lesions are defined as being directly related to WG and not as the results of infection, drug sensitivity or other definable causes other than WG. The most common specific manifestation of cutaneous WG are palpable purpura and ulceration with the histopathologic correlation of leukocytoclastic vasculitis (LCV), most often without granuloma formation, and with a histo-

Table 5. Characteristic involvement of Wegener's granulomatosis by organ/system

Organ/system	%
Upper airway	90-95
Pulmonary	54-85
Pulmonary hemorrhage	5-15
Glomerulonephritis	51-80
Gastrointestinal	>5
Ocular	35-52
Nervous system	20-50
Cardiac	8-16
Cutaneous lesions	15-50

Table 6. Diagnostic entities with cutaneous manifestations to be considered on differential diagnosis of cutaneous Wegener's granulomatosis

Leukocytoclastic or granulomatous vasculitis
Pyoderma gangrenosum
Neutrophilic dermatoses
Infection (bacterial, fungal, mycobacterial)
Infestation (e.g., amebiasis)
Malignancy (lymphoma, lymphomatoid granulomatosis, leukemia cutis)
Cutaneous Crohn's disease
Drug reactions (including hydralazine and minocycline)
Panniculitis (alpha-1 antitrypsin deficiency, erythema nodosum)
Connective tissue syndromes (inclusive of SLE)
Acneiform lesions
Rheumatoid nodules/papules
Granuloma annulare
Calciophylaxis

pathologic correlate of acute and/or granulomatous inflammation, respectively. Many other diagnostic entities with cutaneous manifestations are to be considered on the differential diagnosis of WG (Table 6). Diagnostic algorithm for cutaneous WG includes careful clinical examination and clinical pathologic correlation to confirm the diagnosis (Table 7). Testing of ANCA may play a significant role in the evaluation of patients suspected to have systemic vasculitis or another illness with presentation similar to WG. Only a positive C-ANCA (IIF) with a positive PR3-ANCA (ELISA) result, and a positive P-ANCA (IIF) with a positive MPO-ANCA (ELISA)

Table 7. Diagnostic algorithm in differential diagnosis of cutaneous Wegener's granulomatosis

Characteristic clinical findings (purpura, ulcerations, nodules, etc.)
Biopsy for routine microscopy and special stains for microorganisms
Biopsy for tissue culture*
Serologic tests including ANCA (IIF and ELISA)
Longitudinal follow up of ANCA

*Recommended in the majority of cases if histopathology or clinical findings may also be compatible with infectious cause. ANCA-antineutrophil cytoplasmic antibodies; IIF-indirect immunofluorescence; ELISA-target antigen-specific solid-phase assay

result are sensitive and specific for WG and MPA. Repeat ANCA testing is warranted to follow the course of the disease in patients who have proven WG or MPA as ANCA levels correlate loosely with disease activity and relapses in the absence of ANCA are rare. A patient with LCV and other cutaneous findings suggestive of WG with a positive C-ANCA/PR3-ANCA or P-ANCA/MPO-ANCA test result should be followed carefully for subsequent development of systemic disease manifestations even if there is no sign of internal organ involvement at the time of initial presentation.

DEVELOPMENT OF ANCA AND THEIR ROLE IN THE PATHOGENESIS OF VASCULITIS

Interaction of ANCA with their target antigens

PR3-ANCA are able to inhibit enzymatic activity of native and recombinant PR3 by binding near the catalytic domain (164). Anti-PR3 antibodies prevent the inactivation of PR3 by its natural inhibitor alpha-1 antitrypsin (α -1-AT) (165). The inhibitory activity differs between sera and is not directly related to the amount of specific antibody. In a longitudinal study it has been shown that disease activity in patients with WG correlates with the amount of inhibitory activity of the serum rather than with the titer of PR3-ANCA (166). Likewise, MPO-ANCA may interfere with binding of MPO to its natural inhibitor ceruloplasmin (167). This suggests that escape of the enzyme from its inactivation may contribute to the inflammatory process.

The phenotypic expression of α -1-AT is highly polymorphic: severely, medium and non-deficient proteinase inhibitor phenotypes can be distinguished (168,169). The prevalence of ANCA of diverse specificity was remarkable among a population with the severely deficient phenotype (170). These data suggest that deficient α -1-AT activity is involved in the induction of ANCA.

Interaction of ANCA with endothelial cells

As mentioned above, the antigens recognized by MPO-ANCA and PR3-ANCA are constituents of granules from myeloid cells and are thought to be specific for cells of the monomyeloid lineage. Re-

cent studies have demonstrated, however, that PR3 can be expressed in other cell types as well, in particular in renal carcinoma cells (171) and human endothelial cells (172). These cells, primed by cytokines (TNF- α , IL-1, IFN- γ), express PR3 in their cytoplasm and cell surface making PR3 available for interaction with ANCA. Others have not been able to show endothelial PR3 expression (173). MPO and PR3 are cationic proteins and as such may bind to anionic structures such as the glomerular basement membrane (GBM) and the surface of endothelial cells. It has, indeed, been shown that ANCA can bind to cultured human endothelial cells incubated with MPO (174). Under these conditions, anti-MPO can induce complement-dependent endothelial cell lysis. *In vitro* incubation of endothelial cells with PR3 induces production of IL-8, endothelial cell apoptosis, and detachment and lysis of the endothelium (175-177). Although these *in vitro* studies have demonstrated that ANCA can interact, directly or indirectly, with endothelial cells, direct immunofluorescence studies from lesional tissue have failed to show significant deposition of IgG along the endothelium or the glomerular capillary wall. Thus, the *in vivo* relevance of those *in vitro* studies has yet to be established.

ANCA-mediated neutrophil and monocyte activation

In vitro activation of neutrophils by PR3- and MPO-ANCA requires prior priming of cells by low doses of proinflammatory cytokines, such as TNF- α , IL-1 or LPS. Priming is associated with translocation of ANCA target antigens on the surface of neutrophils, which makes them accessible for interaction with antibodies (178-180). ANCA (anti-PR3 or anti-MPO), bound to appropriately displayed target antigens, have been shown to enhance neutrophil oxidative burst and degranulation (178,179,181,182). Released neutrolytic enzymes may produce tissue injury by means that include induction of endothelial cell apoptosis, detachment and cytolysis (176,177,183,184). In addition, they secrete inflammatory mediators such as TNF- α , IL-1, IL-8 and leukotriene B₄ (185,186). Upon activation by ANCA, PMN express increased levels of adhesion molecules, including β 2-integrins, that facilitate binding to and transmigration through the endothelial monolayer (187,188).

The precise mechanism underlying ANCA-induced neutrophil activation is unclear. It appears that neutrophil activation involves both specific binding of the antibodies *via* F(ab)₂-fragments to surface expressed PR3 or MPO and interaction of their Fc-fragments with Fc R on neutrophils, particularly with Fc RIIa-receptor (189,190). Very recently, it has been shown that ligation of Fc RIIa and Fc RIIIb is necessary for ANCA-induced neutrophil activation, but that signaling cascades by ANCA were different from the signal pathways used by Fc R engagement only (191).

The effect of ANCA on monocytes has been studied to a lesser extent. ANCA have been shown to activate monocytes to the production of reactive oxygen species (192), IL-8, a potent attractant for PMN (193), and monocyte chemoattractant protein-1(MCP-1), even without prior priming (194). Increased production of MCP-1 at the site of inflammation could play an important role in the formation of granulomas by amplification of local monocyte recruitment. Monocytes from the peripheral blood of patients with WG showed the presence of MPO and PR3 on their cell surface during active disease, and monocytes do express the Fc RIIa receptor and CD18 (195).

T-cell reactivity to ANCA-associated antigens

The presence of cellular infiltrates in inflammatory lesions, frequently also in the form of granulomas, in patients with WG and some other vasculitis, such as polyarteritis nodosa, Kawasaki and Takayasu's disease, suggests an important role of cell-mediated immunity in the pathogenesis of these diseases (196-200). Immunopathologic studies have shown that the inflammatory infiltrate is composed mainly of activated T-lymphocytes, the majority of which are CD4⁺ and macrophages (196,197,199,201-203). In agreement with these data, the levels of soluble IL-2 receptor are elevated in WG patients and increase prior to major relapses, providing indirect evidence for a role of activated T-cells in systemic vasculitis (204,205). T-lymphocytes isolated from WG patients proliferate in response to a crude neutrophil extract containing PR3 and MPO (206,207). WG patients re-

sponded more frequently and strongly to PR3 than controls (208,209). However, not all WG patients responded to PR3, and T-cell proliferation was also found in healthy controls (209). In this study, strong IL-10 production elicited by PR3 *in vitro* may have an important function *in vivo*. Recently, it has been shown that B-lymphocyte activation is related to active disease, whereas T-lymphocyte activation persists during remission of the disease in patients with WG, which points to an intrinsically disordered immune system in this disease.

The *in vivo* role of ANCA in experimental models

Although all of the aforementioned mechanisms may be operative *in vivo* in idiopathic vasculitis, conclusive evidence for the pathogenicity of ANCA awaits a convincing animal model of ANCA-induced vasculitis. Several animal models have now emerged that may be relevant in this respect (17). Unfortunately, human anti-PR3 antibodies only react with neutrophils of baboons and not with those of lower species. Also, immunization of rats with human PR3 does not result in antibodies reacting with rat neutrophils. Interestingly, a recent study has shown that rats injected with syngeneic rat apoptotic neutrophils develop ANCA, but the specificity of these ANCA could not be established and they did not seem to be PR3 or MPO (210). Recently, PR3 has been detected and cloned in mice (211). Unfortunately, monoclonal and polyclonal antibodies to human PR3 do not react with cloned mouse PR3. Antihuman PR3 was induced in mice by idiotypic manipulation (212,213). The mice were immunized with affinity-purified PR3-IgG from two WG patients (212). After two weeks, mice developed anti-idiotypic (mouse anti-human anti-PR3 antibodies, ab2) and, after four months, anti-anti-idiotypic antibodies reacting with human PR3 (ab3). In addition, the sera derived from these mice also reacted with human MPO and endothelial surface proteins. Histopathologically, sterile microabscesses developed in the lungs after eight months, and mice died at 8-15 months after immunization with anti-PR3-IgG. The ab3 antibodies were tested for their neutrophil activating ability showing that these antibodies were capable to induce adhesion of human neutrophils to fibronectin and to initiate a respiratory burst (213). These studies demonstrate that

dysregulation of the idiotypic network may lead to the development of pathogenic autoantibodies. Whether this theory is relevant for the induction of ANCA-associated vasculitis cannot, however, be proven until pathogenic idiotypes on bacterial or viral antigens are identified.

Several animal models for anti-MPO-associated vasculitis/glomerulonephritis have been described. Brown Norway rats (the Th2-responder type), exposed to mercuric chloride (HgCl₂), developed a generalized autoimmune disease, mediated by T-cell dependent polyclonal B-cell activation (214). The HgCl₂-induced autoimmune syndrome is characterized by lymphoproliferation, high IL-4 production and hypergammaglobulinemia (215). In addition, a multitude of IgG autoantibodies appeared in these rats, including antibodies to DNA, collagen, thyroglobulin and components of the glomerular basement membrane (216,217). In addition to the above autoantibodies, HgCl₂-treated rats developed antibodies to MPO (218). These rats also developed widespread tissue injury including necrotizing vasculitis in the submucosal vessels of the duodenum and cecum (219). Subsequent studies have demonstrated an important role for autoreactive CD4+ T cells which, upon transfer into healthy animals, can induce the disease (220). On the other hand, it was shown that CD4+OX22 high T-cells were protective since depletion of these cells aggravates the severity of tissue injury, although the autoantibody response was not affected (221). Treatment with cyclosporine during the early phase of the disease diminished tissue injury and delayed the rise in anti-MPO and anti-GBM autoantibodies (222). In contrast, treatment with cyclosporine during the late phase of the disease exacerbated tissue injury although the development of anti-MPO and anti-GBM autoantibodies was completely suppressed. Taken together, these observations suggest that HgCl₂-induced vasculitis is primarily T-cell dependent.

The MRL/lpr strain of mice spontaneously develop lymphoproliferation, proliferative glomerulonephritis and systemic necrotizing vasculitis of small and medium-sized arteries and arterioles, that particularly affect the kidney and gallbladder (223,224). The spontaneous development of tissue injury in these mice is immunologically characterized by accumulation of T-cells with polyclonal

B-cell stimulation resulting in the appearance of rheumatoid factors and autoantibodies of diverse specificity including autoantibodies against ds-DNA, ss-DNA, histones, smooth muscle and ANCA (225). However, monoclonal IgG antibodies derived from these mice were found to be polyreactive, recognizing MPO, LF and DNA (226).

SCG/KJ strain of mice, derived from the F1 hybrid of BXSB and MRL/lpr mice, spontaneously develop rapidly progressive glomerulonephritis and necrotizing vasculitis (227). The sera from these mice produce a perinuclear ANCA staining pattern on human and murine neutrophils and react with murine neutrophil extract and human MPO by ELISA (228,229). Transfer of MPO specific hybridomas derived from SCG/KJ mice into the peritoneum of nude mice induced proteinuria, although histologically no evidence for glomerulonephritis or vasculitis was found (228).

Induction of a selective autoimmune response to MPO is a more direct method of studying the pathophysiologic role of anti-MPO. Immunization of Brown Norway rats with human MPO in complete Freund's adjuvant results in the development of anti-human MPO antibodies cross-reacting with rat MPO and delayed-type hypersensitivity to human MPO (230,231). The autoimmune response alone does not result in clinical lesions. However, after unilateral perfusion of the left kidney with products of activated neutrophils consisting of proteolytic enzymes (HLE and PR3), MPO and its substrate H₂O₂, these MPO-immunized rats develop necrotizing crescentic glomerulonephritis with interstitial tubulonephritis and vasculitis. Systemic injection of lysosomal enzymes, MPO and H₂O₂ in the jugular vein of MPO-immunized rats also resulted in small vessel vasculitis and giant cell formation in the lungs and guts but not in the kidneys (231). The localization of the inflammatory process in the lungs and guts suggests that local factors, e.g., mucosa-associated microbial elements, are involved.

The pathogenic potential of anti-MPO antibodies *in vivo* has also been demonstrated in glomerular basement membrane (anti-GBM) nephritis in Brown Norway rats previously immunized with human MPO (232). Immunized rats not only developed antibodies to human MPO but to rat MPO as well. Following injection of a subnephritogenic dose

of rabbit anti-rat GBM antibodies, severe glomerulonephritis developed characterized by hematuria, proteinuria, fibrinoid necrosis of glomerular capillaries, extensive fibrin accumulation of monocytes/macrophages and crescent formation. In control immunized rats injected with the anti-GBM antibodies, only mild glomerulonephritis was found without evidence for crescent formation, suggesting that the autologous anti-rat MPO antibodies are responsible for the exacerbation of the anti-GBM disease.

These studies support the hypothesis that the presence of ANCA itself is not sufficient to cause tissue injury. Additional factors inducing a proinflammatory environment are needed, which initially result in priming of neutrophils and monocytes and activation of the endothelium. After that, ANCA activate primed neutrophils/monocytes and form *in situ* immune complexes with ANCA antigens released from activated neutrophils, thereby exacerbating the inflammatory response and finally leading to vasculitis and tissue destruction.

INTEGRATIVE VIEW OF THE POTENTIAL IMMUNE MECHANISMS IN THE PATHOGENESIS OF ANCA-ASSOCIATED VASCULITIS

Schematic presentation of an integrative view of ANCA-mediated vascular tissue damage is shown in Figure 2. The model is based on the four prerequisites for endothelial cell damage by ANCA: 1) the presence of ANCA; 2) expression of target antigens for ANCA on primed neutrophils and monocytes; 3) the necessity of an interaction between primed neutrophils and endothelium by means of α 2-integrins; and 4) activation of endothelial cells (7,8,16-20).

Infection or other tissue injury induces an inflammatory response associated with cytokine release (TNF- α , IL-1) resulting in priming of neutrophils and/or monocytes. Priming of these cells prompts expression of ANCA target antigens (PR3, MPO) on their surface. In this manner the autoantigen becomes accessible to the circulating ANCA. Primed neutrophils and monocytes also express Fc γ -receptors on their surface. Consequently, ANCA can bind to their surface *via* their constant region (Fc). Simultaneous binding of circulating antigen released from activated inflammatory cells may cause crosslinking of Fc γ -receptors initiating the

Fc-receptor engagement-dependent activation events.

The mechanisms by which ANCA production is triggered and perpetuated remain unclear. It has been postulated that superantigens and defect(s) in apoptosis or in the removal of apoptotic cells may lead to the development of ANCA through bypassing normal mechanisms of tolerance (233,234). It is well known that superantigens from bacteria and viruses activate large populations of T-cells expressing γ -chain variable gene segments of the T-cell receptor (TCR-V). These T-cells produce large amounts of proinflammatory cytokines and help the autoreactive B-cells produce ANCA. It has been reported that the majority of patients with WG are chronic nasal carriers of *Staphylococcus aureus* and that carriers experience a relapse nearly eight

times more frequently than noncarriers (79). Some studies in these patients have demonstrated skewing of the TCR-V repertoire in peripheral T-cells, suggestive of superantigen triggering of T-cells (235). Also, the clustering of autoantibodies has been observed on the surface of apoptotic cells in systemic vasculitis. Moreover, it has been found that ANCA interact with clustered granule constituents on the surface of apoptotic neutrophils (236,237).

The binding of ANCA to primed neutrophils and monocytes induces release of cytokines (IL-8, MCP-1) and possibly other factors that are strong chemoattractants for more inflammatory cells. ANCA also induce a respiratory burst with release of reactive oxygen species (ROS) and degranulation with release of lysosomal enzymes (HLE, PR3, MPO), which leads to endothelial cell injury

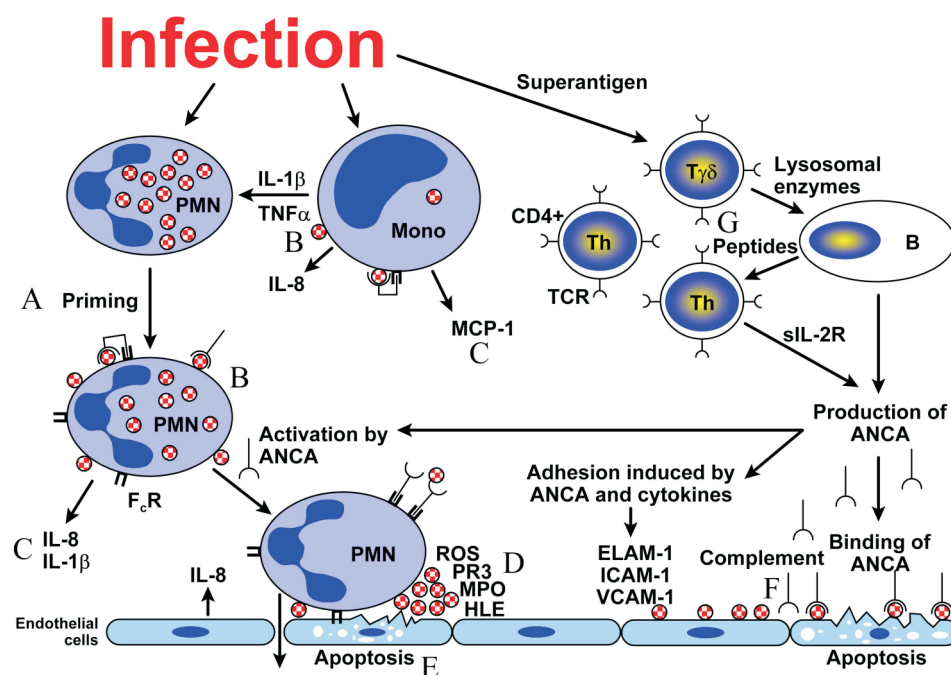


Figure 2. Schematic presentation of an integrative view of the immune mechanisms involved in the pathogenesis of ANCA-associated vasculitis. Cytokines released due to infection or other tissue injury cause priming of neutrophils and/or monocytes (A) and upregulation of adhesion molecules (ELAM-1, ICAM-1, VCAM-1) on the endothelium. Circulating primed neutrophils and/or monocytes express ANCA antigens (PR3, MPO), adhesion molecules (LFA-1, VLA-4) and Fc R on the cell surface (B). Binding of ANCA to primed neutrophils and monocytes induces release of cytokines such as IL-8, IL-1, MCP-1 and possibly other factors that are strong chemoattractants for more inflammatory cells possibly leading to granuloma formation (C). Adherence of primed neutrophils and/or monocytes to the endothelium followed by activation of these cells by ANCA. Activated neutrophils and monocytes release reactive oxygen species (ROS), which leads to endothelial cell injury and eventually to necrotising inflammation (D). PR3 and MPO from ANCA-activated neutrophils and/or monocytes results in endothelial cell activation, endothelial cell injury, or even endothelial cell apoptosis (E). PR3 and MPO serve as planted antigens resulting in in situ immune complexes, which in turn attract other neutrophils (F). The mechanism by which ANCA production is triggered and perpetuated remain unclear. However, T-cells are thought to play a significant role in mediating the production of ANCA by plasma cells, which are derived from antigen-specific B-cells (G). Adapted from ref. 163.

(apoptosis) and eventually to necrotizing inflammation. Except for cytokines, ANCA stimulation also activates endothelial cells resulting in increased adherence of primed and activated neutrophils to their surface. Consequently, the release of cytotoxic neutrophil constituents can directly cause endothelial cell damage by direct cytotoxicity, apoptosis and complement activation by immune complex bound on the endothelial cell surface.

This conceptual scheme is consistent with clinical observations and animal model data, which clearly indicate that ANCA alone do not necessarily lead to disease manifestations. Cofactors that lead to activation of inflammatory and endothelial cells seem to be required to activate various pathogenic mechanisms leading to small vessel vasculitis.

CONCLUSION

The significance of ANCA as diagnostic markers for systemic necrotizing vasculitis or idiopathic necrotizing crescentic glomerulonephritis is well established. Detection of PR3-ANCA strongly suggests a diagnosis of Wegener's granulomatosis, and changes in serum levels of these autoantibodies seem to mirror disease activity. MPO-ANCA are associated with various forms of systemic necrotizing vasculitis including idiopathic necrotizing crescentic glomerulonephritis. The diagnostic significance of ANCA against other target antigens is not clear. Their usefulness in measuring disease activity is at present not clear, although some studies suggest that rises in anti-MPO levels precede relapses.

Many questions remain concerning the pathophysiologic role of ANCA, although both *in vitro* and *in vivo* experimental data strongly support a pathogenic role for ANCA in vasculitis and glomerulonephritis. However, ANCA alone are not sufficient and other, probably exogenous factors seem necessary for disease activation and (re)activation. Circumstantial evidence from human (*Staphylococcus aureus* carriage) and experimental (e.g., the mercuric chloride model) studies suggest that exogenous factors, possibly of a microbial nature, are involved in disease expression.

Acknowledgements. We thank Mr. Zoran Tadić from Department of Animal Physiology, School of Natural Sciences and Mathematics, University of

Zagreb, for his illustration of the immunopathogenic mechanism of ANCA.

Abbreviations

AECA antiendothelial cell antibody
ACPA anticytoplasmic antibody
a1-AT a1-antitrypsin
AIH autoimmune hepatitis
ANA antinuclear antibody
ANCA antineutrophil cytoplasmic antibody
a/P-ANCA 'atypical' perinuclear ANCA
C-ANCA cytoplasmic ANCA
P-ANCA perinuclear ANCA
BPI bactericidal/permeability-increasing protein
CD Crohn's disease
CG cathepsin G
CTD connective tissue diseases
CSS Churg-Strauss syndrome
ELAM endothelial adhesion molecule
ELISA enzyme-linked immunosorbent assay
FcγR Fc-gamma receptors
GBM glomerular basement membrane
GS-ANA granulocyte-specific ANA
HLE human leukocyte elastase
HMG1 and 2 high motility group of nonhistone chromosomal proteins 1 and 2
H₂O₂ hydrogen peroxide
IB immunoblot
IBD inflammatory bowel disease
ICAM-1 intercellular adhesion molecule-1
IIF indirect immunofluorescence
IFN- interferon-
IL-1b interleukin-1b
IL-8 interleukin-8
iNCGN idiopathic necrotizing crescentic glomerulonephritis
LF lactoferrin
LCV leukocytoclastic vasculitis
LFA-1 lymphocyte function antigen-1
LPS lipopolysaccharide
LZ lysozyme
MCP-1 monocyte chemoattractant protein-1
MPA microscopic polyangiitis
MPO myeloperoxidase
MPO-ANCA myeloperoxidase - antineutrophilic cytoplasmic antibody
PAN polyarteritis nodosa
PBC primary biliary cirrhosis
PM/DM polymyositis/dermatomyositis
PR3 proteinase-3
PR3-ANCA proteinase-3 antineutrophilic cytoplasmic antibody

PSC primary sclerosing cholangitis
RA rheumatoid arthritis
RIA radioimmunoassay
ROS reactive oxygen species
SLE systemic lupus erythematosus
SS Sjögren's syndrome
SSc systemic sclerosis
TCR-V α -cell receptor
TNF- tumor necrosis factor α
UC ulcerative colitis
VCAM-1 vascular adhesion molecule-1
VLA-4 very late antigen-4
WG Wegener's granulomatosis

References

- 1 Davies DJ, Moran JE, Niall JF, Ryan GB. Segmental necrotising glomerulonephritis with antineutrophil antibody: possible arbovirus aetiology. *BMJ* 1982; 318:1651-7.
- 2 Hall JB, Wadham BM, Wood CJ, Ashton V, Adam WR. Vasculitis and glomerulonephritis: a subgroup with an antineutrophil cytoplasmic antibody. *Aust N Z J Med* 1984;14:277-8.
- 3 Van der Wouder FJ, Rasmussen N, Lobatto S, Wiik A, Perman H, van Es LA, *et al*. Autoantibodies to neutrophils and monocytes: a new tool for diagnosis and a marker of disease activity in Wegener's granulomatosis. *Lancet* 1985;1:425-9.
- 4 Savage COS, Winearls CG, Jones S, Marshall PD, Lockwood CM. Perspective study of radioimmunoassay for antibodies against neutrophil cytoplasm in diagnosis of systemic vasculitis. *Lancet* 1987;1:1389-93.
- 5 Falk RJ, Jennette JC. Anti-neutrophil cytoplasmic autoantibodies with specificity for myeloperoxidase in patients with systemic vasculitis and crescentic glomerulonephritis. *N Engl J Med* 1988;25:1651-7.
- 6 Hagen EC, Ballieux BE, Van Es LA, Daha MR, Van der Woude FJ. Antineutrophil cytoplasmic autoantibodies: a review of the antigens involved, the assays and the clinical and possible pathogenetic consequences. *Blood* 1993;81:1996-2002.
- 7 Kallenberg MGC, Brouwer E, Weening JJ, Cohen Tervaert WJ. Anti-neutrophil cytoplasmic antibodies: current diagnostic and pathophysiological potential. *Kidney Int* 1994;46:1-15.
- 8 Gross LW, Schmitt WH, Csernok E. ANCA and associated diseases: immunologic and pathogenetic aspects. *Clin Exp Immunol* 1993;91:1-12.
- 9 Gross LW, Csernok E. Immunodiagnostic and pathophysiological aspects of antineutrophil cytoplasmic antibodies in vasculitis. *Curr Opin Rheumatol* 1995;7: 11-9.
- 10 Mayet JW, Helmreich-Becker I, Meyer zum Buschenfelde K-H. The pathophysiology of antineutrophil cytoplasmic antibodies (ANCA) and their clinical relevance. *Crit Rev Oncol Hematol* 1996;23: 151-65.
- 11 Hoffman SG, Specks U. Antineutrophil cytoplasmic antibodies. *Arthritis Rheum* 1998;41:1521-37.
- 12 Schonermarck U, Lamprecht P, Csernok E, Gross LW. Prevalence and spectrum of rheumatic diseases associated with proteinase 3-antineutrophil cytoplasmic antibodies (ANCA) and myeloperoxidase-ANCA. *Rheumatology* 2001;40:178-84.
- 13 Wiik A. Neutrophil-specific autoantibodies in chronic inflammatory bowel disease. *Autoimmunity Rev* 2002;1:67-72.
- 14 Kallenberg CGM, Brouwer E, Mulder LHA, Stegeman CA, Weening JJ, Cohen Tervaert WJ. ANCA – pathophysiology revisited. *Clin Exp Immunol* 1995;100:1-3.
- 15 Cid CM. New developments in the pathogenesis of systemic vasculitis. *Curr Opin Rheumatol* 1996;8:1-11.
- 16 Harper L, Savage COS. Pathogenesis of ANCA-associated systemic vasculitis. *J Pathol* 2000;190:349-59.
- 17 Heeringa P, Brouwer E, Cohen Tervaert WJ, Weening JJ, Kallenberg CGM. Animal models of anti-neutrophil cytoplasmic antibody associated vasculitis. *Kidney Int* 1998;53:253-63.
- 18 Hewins P, Cohen Tervaert JW, Savage COS, Kallenberg CGM. Is Wegener's granulomatosis an autoimmune disease? *Curr Opin Rheumatol* 2000;12: 3-10.
- 19 Kallenberg CGM, Ravel A, Stegeman AC, Limburg CP. New insights into the pathogenesis of antineutrophil cytoplasmic autoantibody-associated vasculitis. *Autoimmun Rev* 2002;1:65-6.
- 20 Reumaux D, Duthilleu P, Roos D. Pathogenesis of diseases with antineutrophil cytoplasm autoantibodies. *Human Immunol* 2004;65:1-12.
- 21 Wiik A. Delineation of a standard procedure for indirect immunofluorescence detection of ANCA. *AMPIS* 1989;97 (Suppl 6):12-3.
- 22 Hagen EC, Andrassy K, Csernok E, Daha MR, Gaskin G, Gross WL, *et al*. The value of indirect immunofluorescence and solid phase techniques for ANCA detection. *J Immunol Methods* 1993;159:1-16.
- 23 Sun J, Fass DN, Hudson JA, Viss MA, Homburger HA, Specks U. Capture-ELISA based on recombinant proteinase 3 (PR3) is sensitive for PR3-ANCA testing and allows detection of PR3 and PR3-ANCA/PR3 immune complexes. *J Immunol Methods* 1998;221:111-23.
- 24 Hagen EC, Andrassy K, Csernok E, Daha MR, Gaskin G, Gross W, Hansen B, Heigl Z, Jayne D, Kallenberg CGM, Lesavre P, Lockwood CM, Lüdemann J, Mascart-Lemone F, Mirapeix E, Pusey C, Rasmussen N, Sinico RA, Tzioufas A, Wieslander J, Wiik A, Van den Woude FJ, EC/BCR Project for ANCA assay standardisation. Development and a standardisation of solid phase assays for the detection of anti-neutrophil cytoplasmic antibodies (ANCA). A report on the second phase of an international cooperative study on the standardisation of ANCA assays. *J Immunol Methods* 1996;196:1-15.
- 25 Savige J, Gillis D, Benson E, Davies D, Esnault CJ, Paspaliaris B, Pollock W, Pusey Ch, Savage OSC, Silvestrini R, van der Woude F, Wieslander J, Wiik A, for the International Group for Consensus Statement on Testing and Reporting of Antineutrophil Cytoplasmic Antibodies (ANCA). *Am J Clin Pathol* 1999;111: 507-13.
- 26 Savige AJ, Paspaliaris B, Silvestrini R, Davies D, Nikoloutsopoulos T, Sturgess A, *et al*. A review of immunofluorescent patterns associated with antineutrophil cytoplasmic antibodies (ANCA) and their

- differentiation from other antibodies. *J Clin Pathol* 1998;51:568-75.
- 27 Cohen Tervaert JW, Goldschmeding R, Elema JD, Limburg PC, van de Giessen M, Huitema MG, *et al*. Association of autoantibodies to myeloperoxidase with different forms of vasculitis. *Arthritis Rheum* 1990;33:1264-72.
 - 28 Lee SS, Lawton MWJ, Chak W. Distinction between antinuclear antibody and P-ANCA. *J Clin Pathol* 1991;44:962-3.
 - 29 Jenne DE, Tschoop J, Lüdemann J, Utecht B, Gross WL. Wegener's autoantigen decoded. *Nature* 1990;346:520.
 - 30 Lüdemann J, Csernok E, Ulmer M, Lemke H, Utecht B, Rautmann A. Anti-neutrophil cytoplasm antibodies in Wegener's granulomatosis: immunodiagnostic value, monoclonal antibodies and characterization of the target antigen. *Neth J Med* 1990;36:157-62.
 - 31 Jennette JC, Hoidal JH, Falk RJ. Specificity of anti-neutrophil cytoplasmic antibodies for proteinase 3. *Blood* 1990;75:2263-4.
 - 32 Jennings U, Chang L, Savige JA. Anti-proteinase antibodies, their characterization and disease associations. *Clin Exp Immunol* 1994;95:251-6.
 - 33 Specks U, Wiegert EM, Momburger HA. Human mast cells expressing recombinant proteinase 3 (PR3) as substrate for clinical testing for anti-neutrophil cytoplasmic antibodies (ANCA). *Clin Exp Immunol* 1997;109:286-95.
 - 34 Bini P, Gabay JE, Teitel A, Melchior M, Zhou J-L, Elkon KB. Antineutrophil cytoplasmic autoantibodies in Wegener's granulomatosis recognize conformational epitopes on proteinase 3. *J Immunol* 1992;149:1409-15.
 - 35 Segelmark M, Baslund B, Weislander J. Some patients with antimyeloperoxidase antibodies have a cANCA pattern. *Clin Exp Immunol* 1994;96:458-65.
 - 36 Cohen Tervaert JW, Goldschmeding R, Elema JD, Limburg PC, van der Giessen M, Huitema MG, *et al*. Association of autoantibodies to myeloperoxidase with different forms of vasculitis. *Arthritis Rheum* 1990;33:1264-72.
 - 37 Nassberger L, Jonsson H, Sjöholm AG, Sturfelt G. Circulating antielastase in systemic lupus erythematosus. *Lancet* 1989;1:509.
 - 38 Cohen Tervaert JW, Mulder L, Stegeman C, Elema J, Huitema M, The TH, Kallenberg CGM. Occurrence of autoantibodies to human leucocyte elastase in Wegener's granulomatosis and other inflammatory disorders. *Ann Rheum Dis* 1993;52:115-20.
 - 39 Halbwaches-Mecarelli L, Nusbaum P, Noel LH, Reumaux D, Erlinger S, Grünfeld JP, *et al*. Anti-neutrophil cytoplasmic antibodies (ANCA) directed against cathepsin G in ulcerative colitis, Crohn's disease and primary sclerosing cholangitis. *Clin Exp Immunol* 1992;90:79-84.
 - 40 Mayet WJ, Hermann E, Finsterwalder J, Rieder H, Poralla T, Meyer zum Büschenfelde KH. Antibodies to cathepsin G in Crohn's disease. *Eur J Clin Invest* 1992;22:427-33.
 - 41 Sobajima J, Ozaki S, Okazaki T, Osakada F, Sumita S, Mori K, *et al*. Anti-neutrophil cytoplasmic antibodies (ANCA) in ulcerative colitis: anti-cathepsin G and a novel antibody correlate with a refractory type. *Clin Exp Immunol* 1996;105:120-4.
 - 42 Yahya TM, Benedict S, Shalabi A, Bayomi R. Anti-neutrophil cytoplasmic antibody (ANCA) in malaria is directed against cathepsin G. *Clin Exp Immunol* 1997;110:41-4.
 - 43 Corremans IEM, Hagen EC, Daha MR, van der Woude FJ, van der Voort EAM, Kleijburg-Van Der Keur C, *et al*. Antilactoferrin antibodies in patients with rheumatoid arthritis are associated with vasculitis. *Arthritis Rheum* 1992;35:1466-75.
 - 44 Lee SS, Lawton JWM, Chan CE. Antilactoferrin antibody in systemic lupus erythematosus. *Br J Rheumatol* 1992;31:669-73.
 - 45 Peen E, Almer S, Bodemar G, Ryden BO, Sjölin C, Tejle K, *et al*. Anti-lactoferrin antibodies and other types of ANCA in ulcerative colitis, primary sclerosing cholangitis and Crohn's disease. *Gut* 1993;34:56-62.
 - 46 Broekroelofs J, Mulder AHL, Nelis GF, Westerveld BD, Cohen Tervaert JW, Kallenberg CGM. Anti-neutrophil cytoplasmic antibodies (ANCA) in sera from patients with inflammatory bowel disease (IBD): relation to disease pattern and disease activity. *Dig Dis Sci* 1994;39:545-9.
 - 47 Brimnes J, Nielsen OH, Wiik O, Heegaard NHH. Molecular targets of autoantibodies to neutrophils in patients with ulcerative colitis. *Dig Dis Sci* 1999;44:415-23.
 - 48 Zhao MH, Lockwood CM. Azurocidin is a novel antigen for anti-neutrophil cytoplasmic autoantibodies (ANCA) in systemic vasculitis. *Clin Exp Immunol* 1996;103:397-402.
 - 49 Moodie FDL, Leaker B, Cambridge G, Totty NF, Segal AW. Alpha-enolase: a novel cytosolic autoantigen in ANCA positive vasculitis. *Kidney Int* 1993;43:675-81.
 - 50 Rozenendaal C, Zhao MH, Horst G, Lockwood CM, Kleibeuker JH, Limburg PC, *et al*. Catalase and alpha-enolase: two novel granulocyte antigens in inflammatory bowel disease (IBD). *Clin Exp Immunol* 1998;112:10-6.
 - 51 Orth T, Kellner R, Diekmann O, Faust J, Meyer zum Büschenfelde KH, Mayet WJ. Identification and characterization of autoantibodies against catalase and alpha-enolase in patients with primary sclerosing cholangitis. *Clin Exp Immunol* 1998;112:507-15.
 - 52 Dighiero G, Lymberi P, Monot C, Abauf N. Sera with high levels of anti-smooth muscle and anti-mitochondrial antibodies frequently bind to cytoskeleton proteins. *Clin Exp Immunol* 1990;82:52-66.
 - 53 Kellner R, Orth T, Mayet WJ. Characterization of target antigens from anti-neutrophil cytoplasmic antibodies in autoimmune hepatitis type 1. *Electrophoresis* 1997;18:507-10.
 - 54 Orth T, Gerken G, Kellner R, Meyer zum Büschenfelde KH, Mayet WJ. Actin is a target antigen of antineutrophil cytoplasmic antibodies (ANCA) in autoimmune hepatitis type 1. *J Hepatol* 1997;26:37-47.
 - 55 Sobajima J, Ozaki S, Osakada F, Uesugi H, Shirakawa H, Yoshida M, *et al*. Novel autoantigens of perinuclear antineutrophil cytoplasmic antibodies (P-ANCA) in ulcerative colitis: novel nonhistone chromosomal proteins, HMG1 and HMG2. *Clin Exp Immunol* 1997;107:135-40.
 - 56 Uesugi H, Ozaki S, Sobajima J, Osakada F, Shirakawa H, Yoshida M, *et al*. Prevalence and characterization of novel pANCA antibodies to the high mobility group nonhistone chromosomal proteins HMG1 and

- HMG2 in systemic rheumatic diseases. *J Rheumatol* 1998;25:703-9.
- 57 Sobajima J, Ozaki S, Uesugi H, Osakada F, Shirakawa H, Yoshida M, *et al.* Prevalence and characterization of perinuclear anti-neutrophil cytoplasmic antibodies (p-ANCA) directed against HMG1 and HMG2 in ulcerative colitis (UC). *Clin Exp Immunol* 1998;111:402-7.
- 58 Zhao MH, Jones SJ, Lockwood CM. Bactericidal/permeability increasing (BPI) protein is an important antigen for antineutrophil cytoplasmic autoantibodies (ANCA) in vasculitis. *Clin Exp Immunol* 1996;99:49-56.
- 59 Stoffel MP, Csernok E, Herzberg C, Johnston T, Carrol SF, Gross WL. Anti-neutrophil cytoplasmic antibodies (ANCA) directed against bactericidal/permeability increasing protein (BPI): a new seromarker for inflammatory bowel diseases and associated disorders. *Clin Exp Immunol* 1996;104:54-9.
- 60 Yang JJ, Tuttle R, Falk RJ, Jennette JC. Frequency of anti-bactericidal/permeability-increasing protein (BPI) and anti-azurocidin in patients with renal disease. *Clin Exp Immunol* 1996;105:125-31.
- 61 Schultz H, Csernok E, Johnston TW, Lockwood CM, Gross WL. Use of native and recombinant bactericidal/permeability-increasing protein (BPI) as antigens for detection of BPI-ANCA. *J Immunol Methods* 1997;205:127-33.
- 62 Eggena M, Cohavy O, Parseghian MH, Hamkalo BA, Clemens D, Ta SR, *et al.* Identification of histone H1 as a cognate antigen of the ulcerative colitis-associated marker antibody pANCA. *J Autoimmun* 2000;14:83-97.
- 63 Nolle B, Specks U, Lüdemann J, Ronrbach MS, Deremee RA, Gross WL. Anticytoplasmic antibodies: their immunodiagnostic value in Wegener's granulomatosis. *Ann Intern Med* 1989;111:28-40.
- 64 Hagen CE, Daha MR, Hermans J, Andrassy K, Csernok E, Gaskin G, *et al.* Diagnostic value of standardized assays for anti-neutrophil cytoplasmic antibodies in idiopathic systemic vasculitis. EC/BCR project for ANCA standardization. *Kidney Int* 1998;53:743-53.
- 65 Malenica B, Božičević M, Batinić D, Marušić M, Juretić A, Sentić M, *et al.* The significance of detection of anti-neutrophil cytoplasmic antibodies (ANCA). *Period Biol* 1996;98:505-10.
- 66 Westman WAK, Selga D, Bygren P, Segelmark M, Baslund B, Wiik A, *et al.* Clinical evaluation of a capture ELISA for detection of proteinase-3 antineutrophil cytoplasmic antibody. Technical note. *Kidney Int* 1998;53:1230-6.
- 67 Venning MC, Quinn A, Broomhead V, Bird AG. Antibodies directed against neutrophils (c-ANCA and p-ANCA) are of distinct diagnostic value in systemic vasculitis. *Q J Med* 1990;77:1287-96.
- 68 Savige JA, Gallicchio M, Georgiu T, Davies DJ. Diverse target antigens recognized by circulating antibodies in antineutrophil cytoplasm antibody-associated renal vasculitides. *Clin Exp Immunol* 1990;82:238-43.
- 69 Cohen Tervaert JW, Mulder AHL, Stegemann CA, Elema JD, Huitema MG, The TH, *et al.* The occurrence of autoantibodies to human leukocyte elastase in Wegener's granulomatosis and other inflammatory disorders. *Ann Rheum Dis* 1993;52:115-20.
- 70 Rao JK, Weinberger M, Oddone EZ, Allen NB, Laudsman P, Feussner JR. The role of antineutrophil cytoplasmic antibody (cANCA) testing in the diagnosis of Wegener's granulomatosis. *Ann Intern Med* 1995;123:925-32.
- 71 Cohen Tervaert JW, Van der Woude FJ, Fauci AS, Ambrus JL, Velosa J, Keane WF, *et al.* Association between active Wegener's granulomatosis and anticytoplasmic antibodies. *Arch Intern Med* 1989;149:2461-5.
- 72 Jayne DRW, Gaskin G, Pusey CD, Lockwood CM. ANCA and predicting relapse in systemic vasculitis. *Q J Med* 1995;88:127-33.
- 73 Egner W, Chapel HM. Titration of antibodies against neutrophil cytoplasmic antigens is useful in monitoring disease activity in systemic vasculitides. *Clin Exp Immunol* 1990;82:244-9.
- 74 Russell AK, Fass ND, Specks U. Antineutrophil cytoplasmic antibodies reacting with the pro form of proteinase 3 and disease activity in patients with Wegener's granulomatosis and microscopic polyangiitis. *Arthritis Rheum* 2001;44:463-8.
- 75 Kerr GS, Fleischer THA, Hallahan CW, Leavitt RY, Fauci AS, Hoffman GS. Limited prognostic value of changes in antineutrophil cytoplasmic antibody titer in patients with Wegener's granulomatosis. *Arthritis Rheum* 1993;36:365-71.
- 76 Cohen Tervaert JW, Huitema MG, Hene RJ, Sluiter WJ, The TH, Van der Hem GK, *et al.* Prevention of relapses in Wegener's granulomatosis by treatment based on antineutrophil cytoplasmic antibody titre. *Lancet* 1990;336:709:11.
- 77 Han KW, Choi KH, Roth MR, McCloskey TR, Niles LJ. Serial ANCA titers: useful tool for prevention of relapses in ANCA-associated vasculitis. *Kidney Int* 2003;63:1079-85.
- 78 Gaskin G, Savage COS, Jones RS, Rees AJ, Lockwood CM, Pusey CD. Anti-neutrophil cytoplasmic antibodies and disease activity during long-term follow-up of 70 patients with systemic vasculitis. *Nephrol Dial Transplant* 1991;6:689-94.
- 79 Stegeman CA, Cohen Terveart JW, Manson WL, Kallenberg CGM. Chronic nasal carriage of *Staphylococcus aureus* in Wegener's granulomatosis: identification of a subgroup more prone to relapses. *Ann Intern Med* 1994;120:12-7.
- 80 Boomsma MM, Stegeman CA, van der Leij MJ, Oost W, Hermans J, Kallenberg CGM, *et al.* Prediction of relapses in Wegener's granulomatosis by measurement of antineutrophil cytoplasmic antibody levels. A prospective study. *Arthritis Rheum* 2000;43:2025-33.
- 81 Girard T, Mahr A, Noel L-H, Cordier J-F, Lesavre P, Andre M-H, *et al.* Are antineutrophil cytoplasmic antibodies a marker predictive of relapse in Wegener's granulomatosis? A prospective study. *Rheumatology* 2001;40:147-51.
- 82 Jennette JC, Falk RJ, Andrassy K, Bacon BA, Churg J, Gross WL, *et al.* Nomenclature of systemic vasculitides: the proposal of an International Consensus Conference. *Arthritis Rheum* 1994;37:187-92.
- 83 Guillevin L, Visser H, Noel LH, Pourrat J, Vernier I, Gayraud M, *et al.* Antineutrophil cytoplasm antibodies in systemic polyarteritis nodosa with and without hepatitis B virus infection and Churg-Strauss syndrome – 62 patients. *J Rheumatol* 1993;20:1345-9.

- 84 Haushild S, Csernok E, Schmitt WH, Gross WL. Antineutrophil cytoplasmic antibodies in systemic polyarteritis nodosa with and without hepatitis B virus infection and Churg-Strauss syndrome. *J Rheumatol* 1994;21:1173-4.
- 85 Pettersen E, Heigl Z. Anti-neutrophil cytoplasmic antibody (c-ANCA and p-ANCA) titers in relation to disease activity in patients with necrotizing vasculitis. A longitudinal study. *Clin Nephrol* 1992;37:219-28.
- 86 Zhao MH, Jones SJ, Lockwood CM. Bactericidal/permeability-increasing protein (BPI) is an important antigen for anti-neutrophil cytoplasm autoantibodies (ANCA) in vasculitis. *Clin Exp Immunol* 1996;99:49-56.
- 87 Cohen Tervaert JW, Goldschmeding R, Elema JD, van der Giessen M, Huitema MG, van der Hem GK, *et al*. Autoantibodies against myeloid lysosomal enzymes in crescentic glomerulonephritis. *Kidney Int* 1990;37:789-806.
- 88 Cohen Tervaert JW, Goldschmeding R, Von Dem Borne AEGKR, Kallenberg CGM. Anti-myeloperoxidase antibodies in the Churg-Strauss syndrome. *Thorax* 1991;46:70-1.
- 89 Cohen Tervaert JW, Kallenberg CGM. Anti-myeloperoxidase antibodies in Churg-Strauss syndrome. *J Neurol* 1993;240:449-52.
- 90 Guillevin L, Cohen P, Gayraud M, Lhote F, Jarrousse B, Casassus P. Churg Strauss syndrome: clinical study and long-term follow-up of 96 patients. *Medicine (Baltimore)* 1999;78:26-37.
- 91 Van der Wall Bake AWL, Lobatto S, Jonges L, Daha MR, Van Es LA. IgA antibodies directed against cytoplasmic antigens of polymorphonuclear leukocytes in patients with Henoch-Schönlein purpura. *Adv Exp Med Biol* 1987;216:1593-8.
- 92 Saulsbury FT, Kirkpatrick PR, Bolton WK. IgA antineutrophil cytoplasmic antibody in Henoch-Schönlein purpura. *Am J Nephrol* 1991;11:295-300.
- 93 Ronda N, Esnault VLM, Layward L, Allen VSA, Feehally J, Lockwood CM. Antineutrophil cytoplasm antibodies (ANCA) of IgA isotype in adult Henoch-Schönlein purpura. *Clin Exp Immunol* 1994;95:49-55.
- 94 Robson WL, Leung AK, Woodman RC. The absence of antineutrophil cytoplasmic antibodies in patients with Henoch-Schönlein purpura. *Pediatr Nephrol* 1994;8:295-8.
- 95 Guzman J, Fung M, Petty RE. Diagnostic value of antineutrophil cytoplasmic and anti-endothelial cell antibodies in early Kawasaki disease. *J Pediatr* 1994;124:917-20.
- 96 Nash MC, Shah V, Reader JA, Dillon MJ. Anti-neutrophil cytoplasmic antibodies and anti-endothelial cell antibodies are not increased in Kawasaki disease. *Br J Rheumatol* 1995;34:882-7.
- 97 Baranger TA, Audrain MA, Castagne A, Barrier JH, Esnault VL. Absence of antineutrophil cytoplasmic antibodies in giant cell arteritis. *J Rheumatol* 1994;21:871-3.
- 98 Eichorn J, Sima D, Thiele B, Lindschau C, Turowski A, Schmidt H, *et al*. Anti-endothelial cell antibodies in Takayasu arteritis. *Circulation* 1996;94:2396-401.
- 99 Savige JA, Gallicchio MC, Stockman A, Cunningham TJ, Rowley MJ, Georgiou T. Anti-neutrophil cytoplasm antibodies in rheumatoid arthritis. *Clin Exp Immunol* 1991;86:92-8.
- 100 Mulder AH, Horst G, Van Leeuwen MA, Limburg PC, Kallenberg CGM. Antineutrophil cytoplasmic antibodies in rheumatoid arthritis: characterization and clinical correlations. *Arthritis Rheum* 1993;36:1054-60.
- 101 Rother E, Schochat T, Peter HH. Antineutrophil cytoplasmic antibodies (ANCA) in rheumatoid arthritis: a prospective study. *Rheumatol Int* 1996;15:231-7.
- 102 Mustila A, Korpela M, Mustonen J, Helin H, Huhtala H, Soppi E, Pasrenack A, Miettinen A. Perinuclear antineutrophil cytoplasmic antibody in rheumatoid arthritis: a marker of severe disease with associated nephropathy. *Arthritis Rheum* 1997;40:710-7.
- 103 Cambridge G, Williams M, Leaker B, Corbett M, Smith CR. Anti-myeloperoxidase antibodies in patients with rheumatoid arthritis: prevalence, clinical correlates and IgG subclass. *Ann Rheum Dis* 1994;53:24-9.
- 104 Braun MG, Csernok E, Schmitt WH, Gross WL. Incidence, target antigens and clinical implications of antineutrophil cytoplasmic antibodies in rheumatoid arthritis. *J Rheumatol* 1996;23:826-30.
- 105 Nassberger L, Sjöholm AG, Jonsson H, Strufelt G, Akessen A. Autoantibodies against neutrophil cytoplasm components in systemic lupus erythematosus and in hydralazine-induced lupus. *Clin Exp Immunol* 1990;81:380-3.
- 106 Schnabel A, Csernok E, Isenberg DA, Mrowka C, Gross WL. Antineutrophil cytoplasmic antibodies in systemic lupus erythematosus. Prevalence, specificities and clinical significance. *Arthritis Rheum* 1995;38:633-7.
- 107 Galeazzi M, Morozzi G, Sebastiani GD, Bellisai F, Marcolongo R, Cervera R, *et al*. Anti-neutrophil cytoplasmic antibody in 566 European patients with systemic lupus erythematosus: prevalence, clinical associations and correlation with other autoantibodies. European Concerted Action on the Immunogenetics of SLE. *Clin Exp Rheumatol* 1998;16:541-6.
- 108 Merkel PA, Polissin RP, Chang Y, Skates SJ, Niles JL. Prevalence of antineutrophil cytoplasmic antibodies in a large inception cohort of patients with connective tissue disease. *Ann Intern Med* 1997;126:866-73.
- 109 Mulder L, Van Rossum M, Horst G, Limburg P, deGraeff-Meeder ER, Kuis W, *et al*. Antineutrophil cytoplasmic antibodies in juvenile chronic arthritis. *J Rheumatol* 1997;24:568-75.
- 110 Helsboot J, Virgo S, McGuigan L, Sturgess A. Antineutrophil cytoplasmic antibodies in inflammatory arthritis – potential for misdiagnosis. *Br J Rheumatol* 1995;34:820-4.
- 111 Lochter H, Peen E, Skogh T. Antineutrophil cytoplasmic antibodies in reactive arthritis. *J Rheumatol* 1995;25:2304-6.
- 112 Papo T, Piette JC, Du LTH, Godeau P, Meyere O, Kahn MF, *et al*. Antineutrophil cytoplasmic antibodies in polyarthritides. *Ann Rheum Dis* 1993;52:384-5.
- 113 Handrock K, Gross WL. Relapsing polyarthritides as a secondary phenomenon of primary systemic vasculitis. *Ann Rheum Dis* 1993;52:895-6.
- 114 Akimoto S, Ishikawa O, Tamura T, Miyachi Y. Antineutrophil cytoplasmic autoantibodies in patients with systemic sclerosis. *Br J Dermatol* 1996;134:407-10.

- 115 Locke IC, Worrall JG, Leaker B, Black CM, Cambridge G. Autoantibodies to myeloperoxidase in systemic sclerosis. *J Rheumatol* 1997;24:86-9.
- 116 Sen D, Isenberg AD. Antineutrophil cytoplasmic autoantibodies in systemic lupus erythematosus. *Lupus* 2003;12:651-8.
- 117 Saxon A, Shanahan F, Landers C, Ganz R, Targan S. A distinct subset of antineutrophil cytoplasmic antibodies is associated with inflammatory bowel disease. *J Allergy Clin Immunol* 1990;86:202-10.
- 118 Rump JA, Scholmerich J, Gross V, Roth M, Helfesrieder R, Rautman A, *et al.* A new type of perinuclear anti-neutrophil cytoplasmic antibody (p-ANCA) in active ulcerative but not in Crohn's disease. *Immunobiology* 1991;181:406-13.
- 119 Mulder AHL, Broekroelofs J, Horst G, Limburg PC, Nelis GF, Kallenberg CGM. Anti-neutrophil cytoplasmic antibodies (ANCA) in inflammatory bowel disease: characterization and clinical correlates. *Clin Exp Immunol* 1994;95:490-7.
- 120 Smetana-Škurla M, Krstulović A, Ostojić R, Krznarić Ž, Rudolf M, Vucelić B, *et al.* Antineutrophil cytoplasmic antibodies (ANCA) in inflammatory bowel disease (IBD): prevalence and diagnostic role. *Period Biol* 1998;100:489-94.
- 121 Duerr RH, Targan SR, Landers CJ, LaRusso NF, Lindsay KL, Wiesner RH, *et al.* Neutrophil cytoplasmic antibodies: a link between primary sclerosing cholangitis and ulcerative colitis. *Gastroenterology* 1991;100:1385-91.
- 122 Targan SR, Landers C, Vidrich A, Czaja AJ. High-titer antineutrophil cytoplasmic antibodies in type-1 autoimmune hepatitis. *Gastroenterology* 1995;108:1159-66.
- 123 Hertervig E, Wieslander J, Johansson C, Wiik A, Nilsson A. Anti-neutrophil cytoplasmic antibodies in chronic inflammatory bowel disease: prevalence and diagnostic role. *Scand J Gastroenterol* 1995;30:693-8.
- 124 Freeman H, Roeck B, Devine D, Carter C. Prospective evaluation of neutrophil cytoplasmic autoantibodies in 500 consecutive patients with inflammatory bowel disease. *Can J Gastroenterol* 1997;11:203-7.
- 125 Krstulović A, Krznarić Ž, Rudolf M, Ostojić R, Vucelić B, Malenica B. Prevalence of antineutrophil cytoplasmic antibodies (ANCA) in autoimmune hepatitis. *Farm Vestn* 1998;49:425-31.
- 126 Walmsley RS, Zhao RH, Hamilton MI, Brownlee A, Chapman P, Pounder RE, *et al.* Antineutrophil cytoplasmic autoantibodies against bactericidal/permeability-increasing protein in inflammatory bowel disease. *Gut* 1997;40:105-9.
- 127 Malenica B, Kozmar A, Ostojić R, Krznarić Ž, Vucelić B. Antineutrophil cytoplasmic antibodies (ANCA) in inflammatory bowel diseases: characterization of antigenic specificities (Abstract). *J Autoimmunity* 1999; (Suppl):81.
- 128 Kozmar A, Vucelić B, Ostojić R, Krznarić Ž, Malenica B. Antineutrophil cytoplasmic antibodies (ANCA) in patients with autoimmune hepatitis (Abstract). *J Autoimmun* 1999; (Suppl):79.
- 129 Abad E, Tural C, Mirapeix E, Cuxart A. Relationship between ANCA and clinical activity in inflammatory bowel disease: variation in prevalence of ANCA and evidence of heterogeneity. *J Autoimmun* 1997;10: 175-80.
- 130 Vasiliauskas EA, Plevy SC, Landers CJ, Binder SW, Ferguson DM, Yang H, *et al.* Perinuclear antineutrophil cytoplasmic antibodies in patients with Crohn's disease define a clinical subgroup. *Gastroenterology* 1996;110:1810-9.
- 131 Sandborn WJ, Landers CJ, Tremaine WJ, Targan SR. Association of antineutrophil cytoplasmic antibodies with resistance to treatment of left-sided ulcerative colitis: results of a pilot study. *Mayo Clin Proc* 1996;71: 431-6.
- 132 Aitola P, Miettinen A, Mattila A, Matikainen M, Soppi E. Effect of proctocolectomy on serum antineutrophil cytoplasmic antibodies in patients with chronic ulcerative colitis. *J Clin Pathol* 1995;48:645-7.
- 133 Sandborn WJ, Landers CJ, Tremaine WJ, Targan SR. Antineutrophil cytoplasmic antibody correlates with chronic pouchitis after ileal pouch-anal anastomosis. *Am J Gastroenterol* 1995;90:740-7.
- 134 Gur H, Shen G, Sutjita M, Terrberry J, Alosachie I, Barka N, *et al.* Autoantibody profile in primary sclerosing cholangitis. *Pathobiology* 1995;63:76-82.
- 135 Zauli D, Ghetti S, Grassi A, Descovich C, Cassani F, Ballardini G, *et al.* Anti-neutrophil cytoplasmic antibodies in type 1 and 2 autoimmune hepatitis. *Hepatology* 1997;25:1105-7.
- 136 Malenica B, Krstulović A, Ostojić R, Vucelić B, Batinić D. Prevalence of antineutrophil cytoplasmic antibody (ANCA) in patients with autoimmune hepatitis (Abstract). *Immunol Lett* 1997;36:480.
- 137 Klassen RJJ, Goldschmeding R, Dolman KM, Vlekke ABJ, Weigl HM, Eeftinck Schattenkerk JKM, *et al.* Anti-neutrophil cytoplasmic autoantibodies in patients with symptomatic HIV infection. *Clin Exp Immunol* 1992;87:24-30.
- 138 Savage JA, Chang L, Horn S, Crowe SM. Anti-nuclear, anti-neutrophil cytoplasmic and anti-glomerular basement membrane antibodies in HIV-infected individuals. *Autoimmunity* 1994;18:205-11.
- 139 Efthimiou J, Spickett G, Lane D, Thompson A. Antineutrophil cytoplasmic antibodies, cystic fibrosis and infection. *Lancet* 1991;337:1037-8.
- 140 Davenport A, Lock RJ, Wallington TB. Clinical relevance of testing for antineutrophil cytoplasmic antibodies (ANCA) with a standard indirect immunofluorescence ANCA test in patients with upper or lower respiratory tract symptoms. *Thorax* 1994;49:213-7.
- 141 Galperin C, Shoenfeld Y, Gilburd B, Esterre P, Meroni PL, Del Papa N, *et al.* Anti-neutrophil cytoplasmic antibodies in patients with chromomycosis. *Clin Exp Rheumatol* 1996;14:479-83.
- 142 Wenisch C, Wenisch H, Bankl H-C, Exner M, Graninger W, Loareesuwan S, *et al.* Detection of anti-neutrophil cytoplasmic antibodies after acute *Plasmodium falciparum* malaria. *Clin Diagn Lab Immunol* 1996;3:132-4.
- 143 Pudifin DJ, Duursma J, Gathiram V, Jackson TFHG. Invasive amoebiasis is associated with the development of anti-neutrophil cytoplasmic antibody. *Clin Exp Immunol* 1994;97:48-51.
- 144 Cho CD, Asuncion A, Tatum AH. False-positive antineutrophil cytoplasmic antibody in aspergillosis with oxalosis. *Arch Pathol Lab Med* 1995;119: 558-61.
- 145 Davenport A. "False positive" perinuclear and cytoplasmic antineutrophil cytoplasmic antibody results

- leading to misdiagnosis of Wegener's granulomatosis and/or microscopic polyarteritis. *Clin Nephrol* 1992; 37:124-30.
- 146 Zhao MH, Jayne DR, Ardiles LG, Culley F, Hodson ME, Lockwood CM. Autoantibodies against bactericidal/permeability-increasing protein in patients with cystic fibrosis. *Q J Med* 1996;89:259-65.
- 147 Albert LJ, Inman RD. Molecular mimicry and autoimmunity. *N Engl J Med* 1999;341:2068-74.
- 148 Croft J, Fatenejad S. Self antigens and epitope spreading in systemic autoimmunity. *Arthritis Rheum* 1997; 40:1274-82.
- 149 Vanderlugt CJ, Miller SD. Epitope spreading. *Curr Opin Immunol* 1996;8:831-6.
- 150 Nassberger L, Sjöholm AG, Jonsson H, Sturfelt G, Akesson A. Autoantibodies against neutrophil cytoplasm components in systemic lupus erythematosus and in hydralazine-induced lupus. *Clin Exp Immunol* 1990;81:380-3.
- 151 Jones BF, Major GAC. Crescentic glomerulonephritis in a patient taking penicillamine associated with antineutrophil cytoplasmic antibody. *Clin Nephrol* 1992;38:293.
- 152 Dolman KM, Gans ROB, Vervaat TJ, Zevenbergen G, Maingay D, Nikkels RE, *et al*. Vasculitis and antineutrophil cytoplasmic autoantibodies associated with propylthiouracil therapy. *Lancet* 1993;342:651-2.
- 153 Vogt BA, Kim Y, Jenette JC, Falk RJ, Burke BA, Sinaiko A. Antineutrophil cytoplasmic autoantibody-positive crescentic glomerulonephritis as a complication of treatment with propylthiouracil in children. *J Pediatr* 1994;124:986-8.
- 154 Kawachi Y, Nukaga H, Hoshino M, Iwata M, Otsuka F. ANCA-associated vasculitis and lupus-like syndrome caused by methimazole. *Clin Exp Dermatol* 1995;20:345-7.
- 155 Short AK, Lockwood CM. Antigen specificity in hydralazine associated ANCA positive systemic vasculitis. *Q J Med* 1995;88:775-83.
- 156 Eklayam O, Yaron M, Caspi D. Minocycline induced arthritis associated with fever, livedo reticularis and pANCA. *Ann Rheum Dis* 1996;55:766-71.
- 157 Tanemoto M, Miyakawa H, Hanai J, Yago M, Kitaoka M, Uchida S. Myeloperoxidase-antineutrophil cytoplasmic antibody-positive crescentic glomerulonephritis complicating the course of Graves' disease: report of three adult cases. *Am J Kidney Dis* 1995; 26:774-80.
- 158 D Cruz D, Chesser AMS, Lightowler C, Comer M, Hurst MJ, Baker LRI, *et al*. Antineutrophil cytoplasmic antibody-positive crescentic glomerulonephritis associated with anti-thyroid drug treatment. *Br J Rheumatol* 1995;34:1090-1.
- 159 Kitahara T, Hiromura K, Maezawa A, Ono K, Narabara N, Yano S, *et al*. Case of propylthiouracil-induced vasculitis associated with anti-neutrophil cytoplasmic antibody (ANCA): review of literature. *Clin Nephrol* 1997;47:336-40.
- 160 Choi HK, Merkel PA, Walker AM, Niles JL. Drug associated antineutrophil cytoplasmic antibody/positive vasculitis, prevalence among patients with high titers of antimyeloperoxidase antibodies. *Arthritis Rheum* 2000;43:405-13.
- 161 Walsh JS, Gross DJ. Wegener's granulomatosis involving the skin. *Cutis* 1999;64:183-6.
- 162 Gibson EL. Cutaneous vasculitis update. *Dermatol Clin* 2001;19:603-15.
- 163 Gibson EL, Specks U, Homburger H. Clinical utility of ANCA tests for the dermatologist. *Int J Dermatol* 2003;42:859-69.
- 164 Daouk R, Palsson R, Arnaout AM. Inhibition of proteinase 3 by ANCA and its correlation with disease activity in Wegener's granulomatosis. *Kidney Int* 1995;47:1528-36.
- 165 Van de Wiel, BA, Dollman KM, van der Meer-Gerritsen CH, Nack CE, von dem Borne AEGK, Goldschmeding R. Interference of Wegener's granulomatosis autoantibodies with neutrophil proteinase 3 activity. *Clin Exp Med* 1992;90:409-14.
- 166 Dolman KM, Stegeman CA, Van de Wiel BA, Hack CE, Von dem Borne AEGK, Kallenberg CGM, Goldschmeding R. Relevance of classic anti-neutrophil cytoplasmic autoantibody (c-ANCA)-mediated inhibition of proteinase 3- α 1-antitrypsin complexation to disease activity in Wegener's granulomatosis. *Clin Exp Immunol* 1993;93:405-10.
- 167 Griffin SV, Chapman PT, Lianos EA, Lockwood CM. The inhibition of myeloperoxidase by ceruloplasmin can be reversed by anti-myeloperoxidase antibodies. *Kidney Int* 1999;55:917-25.
- 168 Elzouki A-N, Segelmark M, Weislander J, Erikson S. Strong link between the alpha-1-antitrypsin PiZ allele and Wegener's granulomatosis. *J Intern Med* 1994; 236:543-8.
- 169 Esnault LV, Andrian AM, Sesbone R. Alpha-1-antitrypsin phenotyping in ANCA-associated diseases: one of several arguments for protease/antiprotease imbalance in systemic vasculitis. *Exp Clin Immunogenet* 1997;14:206-13.
- 170 Griffith M, Lovegrove J, Gaskin G, Withehouse D, Pusey C. C-ANCA anti-neutrophil cytoplasmic antibody positivity in vasculitis patients is associated with the Y allele of alpha-1-antitrypsin, and p-antineutrophil cytoplasmic antibody positivity with the S allele. *Nephrol Dial Transplant* 1996;11:438-43.
- 171 Mayet WJ, Hermann E, Csernok E, Knuth A, Poralla T, Gross WL, *et al*. A human renal cancer cell line as a new antigen source for the detection of antibodies to cytoplasmic and nuclear antigens in sera of patients with Wegener's granulomatosis. *J Immunol Methods* 1991;143:57-64.
- 172 Mayet WJ, Csernok E, Szymkowiak C, Gross WL, Meyer zum Buschenfelde KM. Human endothelial cells express proteinase 3, the target antigen of anti-cytoplasmic antibodies in Wegener's granulomatosis. *Blood* 1993;82:1221-9.
- 173 Brandt M de, Meyer O, Dacosta L, Elbim C, Pasquier C. Anti-proteinase 3 (PR3) antibodies (cANCA) recognize various targets on the human umbilical endothelial cell (HUVEC) membrane. *Clin Exp Immunol* 1999;115:362-8.
- 174 Ballieux BE, Zondervan KT, Kievit P, Hagen EC, Es LA, van der Woude FJ, *et al*. Binding of proteinase 3 and myeloperoxidase to endothelial cells induce ANCA-mediated endothelial damage through ADCC. *Clin Exp Immunol* 1994;97:52-60.
- 175 Berger SP, Seelen MA, Hiemstra PS, Gerritsma JSJ, Heemskerk E, van der Woude, *et al*. Proteinase 3, the major autoantigen of Wegener's granulomatosis, enhances IL-8 production by endothelial cells *in vitro*. *J Am Soc Nephrol* 1996;7:694-701.

- 176 Ballieux BEPB, Hiemstra PS, Klar-Mohamad N, Hagen EC, van Es LA, van der Woude FJ, *et al*. Detachment and cytolysis of human endothelial cells by proteinase 3. *Eur J Immunol* 1994;24:3211-5.
- 177 Yang JJ, Kettritz R, Falk RJ, Jennette JC, Gaido ML. Apoptosis of endothelial cells induced by the neutrophil serine proteases, proteinase 3 and elastase. *Am J Pathol* 1996;149:1617-26.
- 178 Csernok E, Ernst M, Schmitt W, Bainton DF, Gross WL. Activated neutrophils express proteinase 3 on their plasma membrane *in vitro* and *in vivo*. *Clin Exp Immunol* 1994;95:244-50.
- 179 Gilligan H, Brady B, Brady H, Hebert MJ, Slayter HS, Xu Y, *et al*. Antineutrophil cytoplasmic autoantibodies interact with primary granule constituents on the surface of apoptotic neutrophils in the absence of neutrophil priming. *J Exp Med* 1996;184:2231-41.
- 180 Reumaux D, DeBoer M, Meijer AB, Duthilleul P, Roos D. Expression of myeloperoxidase (MPO) by neutrophils is necessary for their activation by anti-neutrophil cytoplasm autoantibodies (ANCA) against MPO. *J Leukoc Biol* 2003;73:841-6.
- 181 Falk RJ, Terrell RS, Charles LA, Jennette JC. Anti-neutrophil cytoplasmic autoantibodies induce neutrophils to degranulate and produce oxygen radicals *in vitro*. *Proc Natl Acad Sci USA* 1990;87:4115-9.
- 182 Brouwer E, Huitema MG, Mulder AHL, Heeringa P, Van Goor H, Cohen Tervaert JW, *et al*. Neutrophil activation *in vitro* and *in vivo* in Wegener's granulomatosis. *Kidney Int* 1994;45:1121-31.
- 183 Evert BH, Jennette JC, Falk RJ. Anti-myeloperoxidase antibodies stimulate neutrophils to damage human endothelial cells. *Kidney Int* 1992;41:375-83.
- 184 Savage COS, Pottinger BE, Gaskin G, Pusey CD, Pearson JD. Autoantibodies developing to myeloperoxidase and proteinase 3 in systemic vasculitis stimulate neutrophil cytotoxicity towards cultured endothelial cells. *Am J Pathol* 1992;141:335-42.
- 185 Griminger F, Hatth K, Papavassilis C, Temmesfeld B, Csernok E, Gross WL. Neutrophil activation by anti-proteinase 3 antibodies in Wegener's granulomatosis: role of arachidonic acid and leukotriene B4 generation. *J Exp Med* 1996;184:1567-72.
- 186 Brooks CJ, King WJ, Radford DJ, Adu D, McGrath M, Savage COS. IL-1 beta production by human polymorphonuclear leukocytes stimulated by anti-neutrophil cytoplasmic autoantibodies – relevance to systemic vasculitis. *Clin Exp Immunol* 1996;106:273-9.
- 187 Keogan MT, Rifkin I, Ronda N, Lockwood CM, Brown DL. Antineutrophil cytoplasm antibodies increase neutrophil adhesion to cultured human endothelium. *Adv Exp Med Biol* 1993;336:115-9.
- 188 Johnson PA, Alexander HD, Mc Millan SA, Maxwell AP. Upregulation of the granulocytes adhesion molecule Mac-1 by autoantibodies in autoimmune vasculitis. *Clin Exp Immunol* 1997;107:513-9.
- 189 Mulder AHL, Heeringa P, Brouwer E, Limburg PC, Kallenberg CGM. Activation of granulocytes by anti-neutrophil cytoplasmic antibodies (ANCA): a Fc gammaRII-dependent process. *Clin Exp Immunol* 1994;98:270-8.
- 190 Porges AJ, Redecha PB, Kimberly WT, Csernok E, Gross WL, Kimberly RP. Anti-neutrophil cytoplasmic antibodies engage and activate human neutrophils *via* Fc gammaRIIa. *J Immunol* 1994;153:1271-80.
- 191 Reumaux D, Vosseveld PJM, Roos D, Verhoeven AJ. Effect of tumor necrosis factor-induced integrin activation on Fc gamma receptor II-mediated signal transduction: relevance for activation of neutrophils by anti-proteinase 3 or anti-myeloperoxidase antibodies. *Blood* 1995;86:3189-95.
- 192 Weidner S, Neupart W, Goppelt-Struebe M, Ruprecht DH. Antineutrophil cytoplasmic antibodies induce human monocytes to produce oxygen radicals *in vitro*. *Arthritis Rheum* 2001;44:1698-706.
- 193 Ralston DR, Marsh CB, Lowe MP, Wewers MD. Antineutrophil cytoplasmic antibodies induce monocyte IL-8 release. Role of surface proteinase 3, alpha/1 antitrypsin and Fc gamma receptors. *J Clin Invest* 1997;100:1416-24.
- 194 Casselman B, Kilgore K, Miller B, Warren J. Antibodies to neutrophil cytoplasmic antigens induce monocyte chemoattractant protein-1 secretion from human monocytes. *J Lab Clin Med* 1995;126:495-502.
- 195 Muller Kobold AC, Kallenberg CGM, Cohen Tervaert JW. Monocyte activation in patients with Wegener's granulomatosis. *Ann Rheum Dis* 1999;58:237-45.
- 196 Pall AA, Savage COS. Mechanisms of endothelial cell injury in vasculitis. *Springer Seminar Immunopathol* 1994;16:23-37.
- 197 Rasmussen N, Petersen J. Cellular immune responses and pathogenesis in c-ANCA positive vasculitides. *J Autoimmun* 1993;6:227-36.
- 198 Kallenberg CGM, Cohen Tervaert JW, van der Woude FJ, Goldschmeding R, von dem Borne AEGKR, Weening JJ. Autoimmunity to lysosomal enzymes: new clues to vasculitis and glomerulonephritis? *Immunol Today* 1991;12:61-4.
- 199 Mathieson PW, Oliveira DBG. The role of cellular immunity in systemic vasculitis. *Clin Exp Immunol* 1995;100:183-5.
- 200 Ballieux BEPB, Van Der Burg SH, Hagen EC, Van Der Woude FJ, Melief CJM, Van Es LA, Daha MR. Cell-mediated autoimmunity in patients with Wegener's granulomatosis. *Clin Exp Immunol* 1995;100:186-93.
- 201 Giscombe R, Grunewald J, Nityanand S, Lefvert AK. T cell (TCR) V gene usage in patients with systemic necrotizing vasculitis. *Clin Exp Immunol* 1995;101:213-9.
- 202 Cid MC, Grau JM, Casademont J, Campo E, Coil-Vinent B, Lopez-Soto A, *et al*. Immunohistochemical characterization of inflammatory cells and immunologic activation markers in muscle and nerve biopsy specimens from patients with systemic polyarteritis nodosa. *Arthritis Rheum* 1994;37:1055-61.
- 203 Seko JY, Minota S, Kiwasaki A, Shinkai Y, Maeda K, Yagita H, *et al*. Perforin-secreting killer cell infiltration and expression of a 65-kD heat-shock protein in aortic tissue of patients with Takayasu's arteritis. *Clin Invest* 1994;93:750-8.
- 204 Stegeman CA, Cohen Tervaert JW, Huitema MG, Kallenberg CGM. Serum markers of T-cell activation in relapse of Wegener's granulomatosis. *Clin Exp Immunol* 1993;91:415-20.
- 205 Schmitt WH, Heesen C, Csernok E, Gross WL. Elevated serum level of soluble interleukin-2-receptor (sIL-2R) in Wegener's granulomatosis. *Arthritis Rheum* 1992;35:108-12.
- 206 Petersen J, Rasmussen N, Szpirt W, Hermann E, Mayet W. T lymphocyte proliferation to neutrophil

- cytoplasmic antigen(s) in Wegener's granulomatosis. *Am J Kidney Dis* 1991;18:205.
- 207 Brouwer E, Stegeman CA, Huitema MG, Limburg PC, Kallenberg CGM. T-cell reactivity to proteinase 3 and myeloperoxidase in patients with Wegener's granulomatosis. *Clin Exp Immunol* 1994;98:448-53.
- 208 Griffith ME, Coulthart A, Pusey CD. T cell responses to myeloperoxidase (MPO) and proteinase 3 (PR3) in patients with systemic vasculitis. *Clin Exp Immunol* 1996;103:253-8.
- 209 Papa ER, Franssen CF, Limburg PC, Huitema MG, Kallenberg CGM, Cohen Tervaert JW. *In vitro* cytokine production and proliferation of T cells from patients with anti-proteinase 3 and antimyeloperoxidase-associated vasculitis in response to proteinase 3 and myeloperoxidase. *Arthritis Rheum* 2002;46:1894-904.
- 210 Patry YC, Treweek CD, Gregoire M, Audrian MA, Moreau AM, Muller JY, *et al*. Rats injected with syngeneic rat apoptotic neutrophils developed antineutrophil cytoplasmic antibodies. *J Am Soc Nephrol* 2001;12:1764-8.
- 211 Aveskogh M, Lützelshwab C, Huang MR, Hellman L. Characterization of cDNA clones encoding mouse proteinase 3 (myeloblastin) and cathepsin G. *Immunogenetics* 1997;46:181-91.
- 212 Tomer Y, Gilburd B, Blank M, Lider O, Hershkovitz R, Fishman P, *et al*. Characterization of biologically active antineutrophil cytoplasmic antibodies induced in mice. *Arthritis Rheum* 1995;38:1375-81.
- 213 Blank M, Tomer Y, Stein M, Kopolović J, Wiik A, Meroni PL, *et al*. Immunization with anti-neutrophil cytoplasmic antibody (ANCA) induces the production of mouse ANCA and perivascular lymphocyte infiltration. *Clin Exp Immunol* 1995;102:120-30.
- 214 Druet P, Pelletier L, Hirsch F, Rossert J, Pasquier R, Druet E, *et al*. Mercury-induced autoimmune glomerulonephritis in animals. *Contrib Nephrol* 1988;61:120-30.
- 215 Hirsh F, Couderc J, Sapin C, Fournie G, Druet P. Polyclonal effect of HgCl₂ in the rat, its possible role in experimental autoimmune disease. *Eur J Immunol* 1982;12:620-5.
- 217 Aten J, Veninga A, Coers W, Sonnenberg A, Timpl R, Claessen N, *et al*. Autoantibodies to the laminin P1 fragment in HgCl₂-induced membranous glomerulopathy. *Am J Pathol* 1995;146:1467-80.
- 218 Esnault VLM, Mathieson PW, Thiru S, Oliviera DB, Lockwood CM. Autoantibodies to myeloperoxidase in Brown Norway rats treated with mercuric chloride. *Lab Invest* 1992;67:114-20.
- 219 Mathieson PW, Thiru S, Oliviera DBG. Mercuric chloride treated Brown Norway rats develop widespread tissue injury including necrotizing vasculitis. *Lab Invest* 1992;67:121-9.
- 220 Pelletrier L, Pasquier R, Rossert J, Vial MC, Mandet C, Druet P. Autoreactive T cells in mercury-induced autoimmunity. *J Immunol* 1988;140:750-4.
- 221 Mathieson PW, Thiru S, Oliviera DBG. Regulatory role of OX22+ T cells in mercury-induced autoimmunity in the Brown Norway rat. *J Exp Med* 1993;177:114-20.
- 222 Qasim FJ, Mathieson PW, Thiru S, Oliviera DBG. Cyclosporin A exacerbates mercuric chloride-induced vasculitis in the Brown Norway rat. *Lab Invest* 1995;72:183-91.
- 223 Hewicker M, Trautwein G. Sequential study of vasculitis in MRL mice. *Lab Anim* 1987;21:335-41.
- 224 Moyer CF, Strandberg DJ, Reinisch CL. Systemic mononuclear cell vasculitis in MRL/lpr mice: a histological and immunocytochemical analysis. *Am J Pathol* 1987;127:229-42.
- 225 Izui S, Eisenberg RA. Circulating anti-DNA-rheumatoid factor complex in MRL/1 mice. *Clin Immunol Pathol* 1980;15:536-51.
- 226 Harper JM, Lockwood CM, Cooke A. Anti-neutrophil cytoplasm antibody in MRL-lpr/lpr mice. *Clin Exp Immunol* 1993;93 (Suppl 1):22.
- 227 Kinjoh K, Good RA, Nemoto K, Falk RJ, Jennette JC. SCG/Kj mice develop crescentic glomerulonephritis (CGN), vasculitis and MPO-specific P-ANCA (Abstract). *Clin Exp Immunol* 1995;101 (Suppl 1):53.
- 228 Kinjoh K, Good RA, Taylor J, Nachman P, Falk RJ, Jennette JC. Hybridomas from SCG/j mice produce P-ANCA with specificity for myeloperoxidase (MPO) and induce proteinuria in nude mice (Abstract). *Clin Exp Immunol* 1995;101 (Suppl 1):37.
- 229 Kobayashi K, Shibata T, Sugisaki S. Aggravation of rat nephrotoxic serum nephritis by anti-myeloperoxidase antibodies. *Kidney Int* 1995;47:454-63.
- 230 Brouwer E, Huitema MG, Klok PA, de Weerd H, Cohen Tervaert JW, Weening JJ, *et al*. Anti-myeloperoxidase associated proliferative glomerulonephritis: an animal model. *J Exp Med* 1993;177:905-14.
- 231 Heeringa P, Foucher P, Klok PA, Huitema MG, Cohen Tervaert JW, Weening JJ, *et al*. Systemic injection of products of activated neutrophils and H202 in myeloperoxidase-immunized rats leads to necrotizing vasculitis in the lungs and gut. *Am J Pathol* 1997;151:131-9.
- 232 Heeringa P, Brouwer E, Klok PA, Huitema MG, van den Born J, Weening JJ, *et al*. Autoantibodies to myeloperoxidase aggravate mild anti-glomerular-basement-membrane mediated glomerular injury. *Am J Pathol* 1996;149:1695-706.
- 233 Cohen Tervaert JW, Popa ER, Bos NA. The role of superantigens in vasculitis. *Curr Opin Rheumatol* 1999;11:24-31.
- 234 Utz PJ, Anderson P. Posttranslational protein modifications, apoptosis and the bypass of tolerance to autoantigens. *Arthritis Rheum* 1998;41:1152-60.
- 235 Giscombe R, Grunewald J, Nityanand S, Lefvert AK. T cell receptor (TCR) V gene usage in patients with systemic necrotizing vasculitis. *Clin Exp Immunol* 1995;101:213-9.
- 236 Moosig F, Csernok E, Kumanovics G, Gross WL. Opsonization of apoptotic neutrophils by anti-neutrophil cytoplasmic antibodies (ANCA) leads to enhanced uptake by macrophages and increased release of tumour necrosis factor-alpha (TNF-alpha). *Clin Exp Immunol* 2000;122:499-503.
- 237 Gilligan HM, Bredy B, Brady HR, Hebert MJ, Slayter HS, Xu Y, *et al*. Antineutrophil cytoplasmic autoantibodies interact with primary granule constituents on the surface of apoptotic neutrophils in the absence of neutrophil priming. *J Exp Med* 1996;184:2231-41.