
Lara ORLIĆ

ŽELJEZNODOBNE FIBULE S NALAZIŠTA ČETVRT SV. TEODORA U PULI

IRON AGE FIBULAE FROM THE SITE OF ST. THEODORE'S QUARTER AT PULA

Lara Orlić
Arheološki muzej Istre, Carrarina 3, 52100 Pula
laraorlic@yahoo.com

Lara Orlić
Archaeological Museum of Istria, Carrarina 3, 52 100 Pula
laraorlic@yahoo.com

UDK 903.25(497.5 Pula)“-06/-01”
Pregledni znanstveni članak
Primljeno: 8.6.2012.
Odobreno: 3.9.2012.

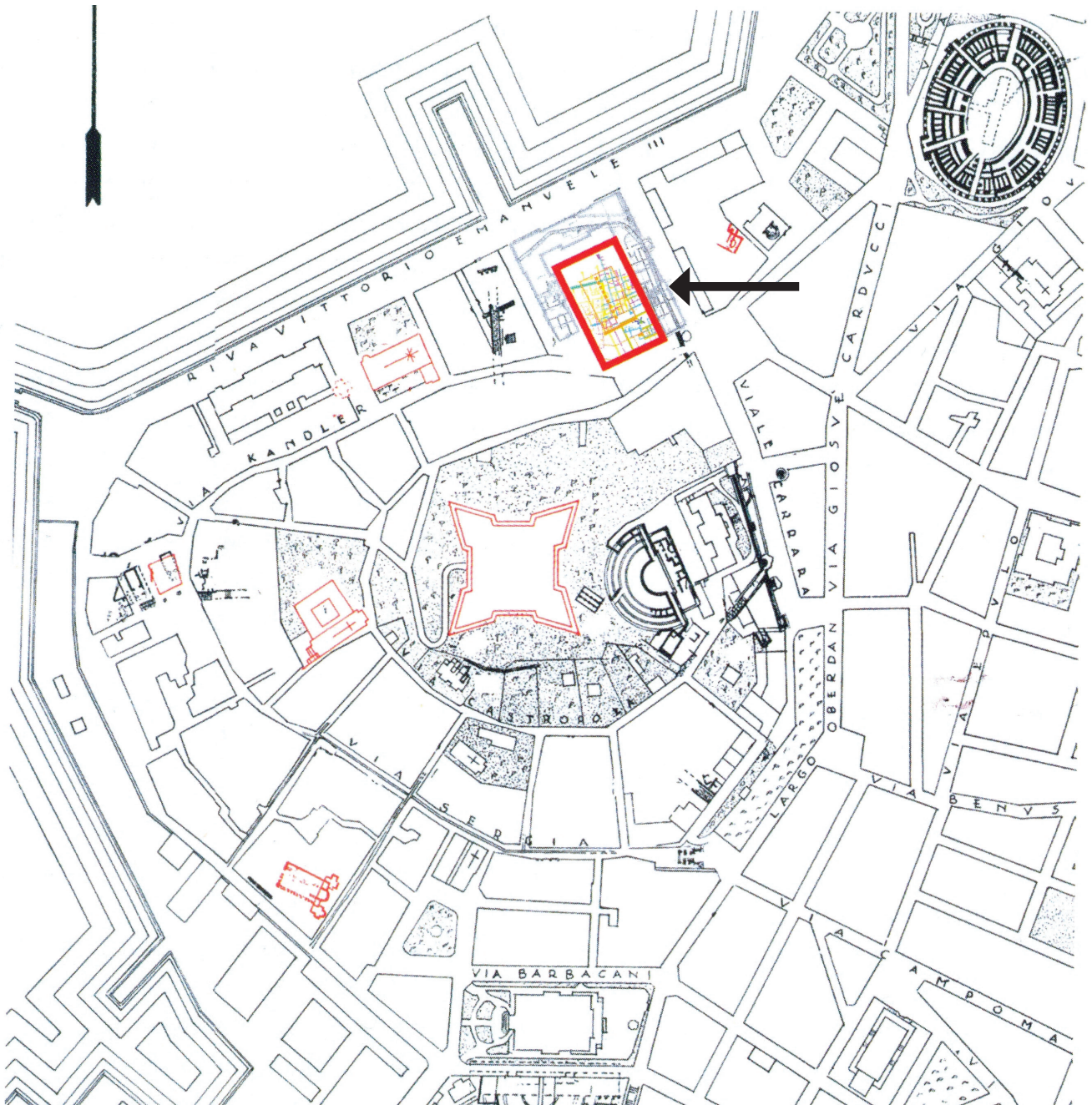
UDC 903.25(497.5 Pula)“-06/-01”
Review
Received: June 8, 2012
Approved: September 3, 2012

U radu su predstavljene fibule pronađene u zoni oko Herkulovog hrama u blizini izvora pitke vode u Puli. Fibule su otkrivene kako u netaknutim slojevima na padinama puljskog brežuljka, tako i u nasipnom sloju koji je služio kao podloga drenažnom sloju amfora postavljenom u trećoj četvrtini 1. st. pr. Kr. Fibule obuhvaćaju vremensko razdoblje od 6. do pol. 1. st. pr. Kr. Određene su tipološki, te je za svaki tip navedeno u kojim fazama se pojavljuju i na kojem prostoru. Rasprostranjenost većine tipova prikazana je kartom. Razmatrana je mogućnost da je i prije izgradnje Herkulovog hrama na prostoru oko izvora vode postojalo prapovijesno svetište.

Presented in this work are fibulae unearthed in the zone surrounding the temple of Hercules located in the vicinity of the freshwater spring. These fibulae were discovered either in the untouched layers on the slopes of a hillock at Pula, or in a layer of fill that served as a base for a drainage layer consisting of amphorae, which was erected in the third quarter of the 1st century BC. These fibulae encompass a period of time from the 6th to the middle of the 1st century BC. They were typologically determined, and each type is accompanied by data regarding its phases of existence, as well as location. The spread of most types was shown with the help of a chart. The possibility that a prehistoric sanctuary existed in the area around the freshwater spring even before the erection of Hercules' temple was likewise explored.

KLJUČNE RIJEČI: Pula, Histri, starije željeznodobne fibule, mlade željeznodobne fibule, svetište

KEY WORDS: Pula, Histri, Early Iron Age fibulae, Late Iron Age fibulae, sanctuary



Sl. 1 Položaj nalazišta u Puli (Starac 2011, str. 6)

Fig. 1 The position of the site at Pula (Starac 2011, p. 6)

OPIS POLOŽAJA NALAZA

Prezentirane fibule otkrivene su u zaštitnim iskopavanjima na nalazištu Četvrt sv. Teodora u Puli, provedenim 2007. - 2009. godine. Nalazište je istraživano od 2005. do 2009. Ukupno su pronađene 23 fibule ili fragmenti fibula. Sve su odabrane za izložbu "Pula rađanje grada" (postavljena je u izložbenom prostoru Sveta Srca od 14. srpnja do 15. listopada 2011.) te je stoga u ovom članku izostavljen kataloški prikaz s obzirom da je u pripremi katalog izložbe.

A DESCRIPTION OF THE POSITION OF THE FINDS

Presented in this work are fibulae that were unearthed during the rescue archaeological excavations on the site in St. Theodore's Quarter at Pula, which were carried out from 2007 - 2009. Excavations on this site had been going on from 2005 to 2009. A total of 23 fibulae or fragments thereof were discovered. All fibulae were chosen to be shown at the exhibition "Pula - the Birth of a Town" (the venue for this exhibition was the "Sacred Hearts" Museum Gallery, and it lasted from

Bogata stratigrafija ovog nalazišta unutar gradskih zidina antičke Pule objavljena je u člancima voditeljice istraživanja dr. Alke Starac (Starac 2009, 124).

Fibule su pronađene unutar prostora rimskog svetišta, u dvorištu oko Herkulovog hrama koji je podignut na padinama pulskog brežuljka 45. g. pr. Kr. ili ranije (Starac 2009, sl. 1). Vremenski fibule obuhvaćaju period od 6. st. pr. Kr. do sredine 1. st. pr. Kr., kada je nakon osnutka kolonije postavljen drenažni sustav s naopako okrenutim amforama, radi izgradnje kompleksa gradskih terma i domusa (Starac 2011, 5). Fibule su trag predrimске faze histarskog naselja na padini pulskog brežuljka. Tragovi tog naselja pronađeni su u sondi 3, kvadrant 1: to su objekti od kojih su očuvani suhozidni temelji, brojna ognjišta i stope za postavljanje vertikalnih greda koje su nosile krovnu konstrukciju. Veliko pravokutno ognjište obloženo okomitim škrlama, aktivno krajem 4. st. pr. Kr., zatrpano je tijekom 3. st. pr. Kr., a na njegovom mjestu izgrađen je pravokutni objekt s kamenim opločenjem i ispuštom za vodu. Objekt je srušen i napušten oko 41. pr. Kr. zbog požara koji se dogodio za vrijeme rimskih građanskih ratova, nakon Cezarove smrti. Četrdesetih godina 1. st. pr. Kr., prilikom izgradnje hrama i uređenja hramske terase, na tome mjestu ukopana je jama ožbukanih stijenki s ostacima paljevine koji upućuju na prinošenje žrtve i sakralni karakter strukture. Pretpostavka je da je prostor oko izvora vode imao ulogu kulnog mjesta u prapovijesnom razdoblju. Po osnutku rimske kolonije prirodno vrelo nalazilo se unutar sakralnog kompleksa povezanog s kultovima vode, zdravlja i čistoće (Starac 2011, 62). Zanimljivo je da na nalazištu nedostaje V. stupanj histarske kulture, tj. materijal karakterističan za 5. st. pr. Kr.

Slojevi 1-08, 2-08, 7-08, 15-08 nastali su sredinom 1. st. pr. Kr. prilikom nasipavanja terase hramskog dvorišta i pripreme terena za postavljanje drenažnog depozita amfora. Pritom je korištena prekopana zemlja iz starijih kulturnih slojeva. Slojevi 7-08 i 15-08 nasuti su gotovo istodobno preko cijele površine hramskog dvorišta. Sloj 15-08 je drenažni, od krupnog lomljenca i mrvica vapnene žbuke, a služio je kao podloga depozitu amfora. Osim fibula, u tim su slojevima pronađeni gruba kuhinjska keramika, obična stolna keramika, keramika s crvenim i crnim premazom, siva stolna keramika, pršljenovi, amfore, staklo, željezo, tegule, cigle, crijepovi, kosti i školjke (Starac 2009, 155, grafikon 1).

Slojevi 8-08 i 26-08, koji se nalaze ispod nasipnih slojeva, nastali su taloženjem prije izgradnje terase, u

July 14 to October 15, 2011), for which a catalogue is currently being prepared, and that is the reason why this work lacks a catalogue section.

The rich stratigraphy of this site located within the town walls of Roman Pula was published in several works written by Dr. Alka Starac, who headed these explorations (Starac 2009, 124).

The fibulae were discovered within the premises of the Roman sanctuary, in the courtyard around Hercules' temple that was erected on the slopes of a hillock in Pula in 45 BC or before that (Starac 2009, Fig. 1). These fibulae cover a time span from the 6th century BC to the middle of the 1st century BC, when a drainage system was erected after the founding of the colony. This drainage system consisted of amphorae that were placed upside down, and it was built before the erection of a complex consisting of *thermae* and a *domus* (Starac 2011, 5). These fibulae represent traces of the pre-Roman phase of the Histrian settlement located on the slope of a hillock in Pula. Traces of this settlement were discovered in Probe 3, Quadrant 1: they consist of structures whose drywall foundations were preserved, followed by numerous fireplaces and hollows used to fasten the vertical beams that supported the roofing. The large rectangular fireplace lined with vertical slabs, which was in use towards the end of the 4th century BC, was covered with fill during the 3rd century BC, and on its spot a rectangular structure was erected, featuring flagstones and an outlet for the release of water. This structure was demolished and deserted around 41 BC as a consequence of a fire that occurred during the period of Roman civil wars that erupted after the death of Caesar. In the forties of the 1st century BC, during the erection of the temple and its terrace, a rectangular hole was dug on this spot, featuring plastered walls and remnants of burning that point to offerings and to the sacral character of this structure. It is presumed that the area around the freshwater spring enjoyed cult status in the prehistoric period. After the founding of the Roman colony, the natural spring was located within the boundaries of a sacral complex dedicated to the cults of water, health and cleanliness (Starac 2011, 62). It is interesting to note that the V. degree of Histrian culture is missing on site, i.e., materials characteristic for the 5th century BC.

Layers 1-08, 2-08, 7-08 and 15-08 were created in the middle of the 1st century BC, during the filling of the terrace that belonged to the temple courtyard, and the preparation of the terrain for the erection of a drainage layer consisting of a deposit of amphorae. The loose soil belonging to older culture layers was used for this purpose. Layers 7-08 and 15-08 were strewn with earth almost concurrently across the full surface of the temple

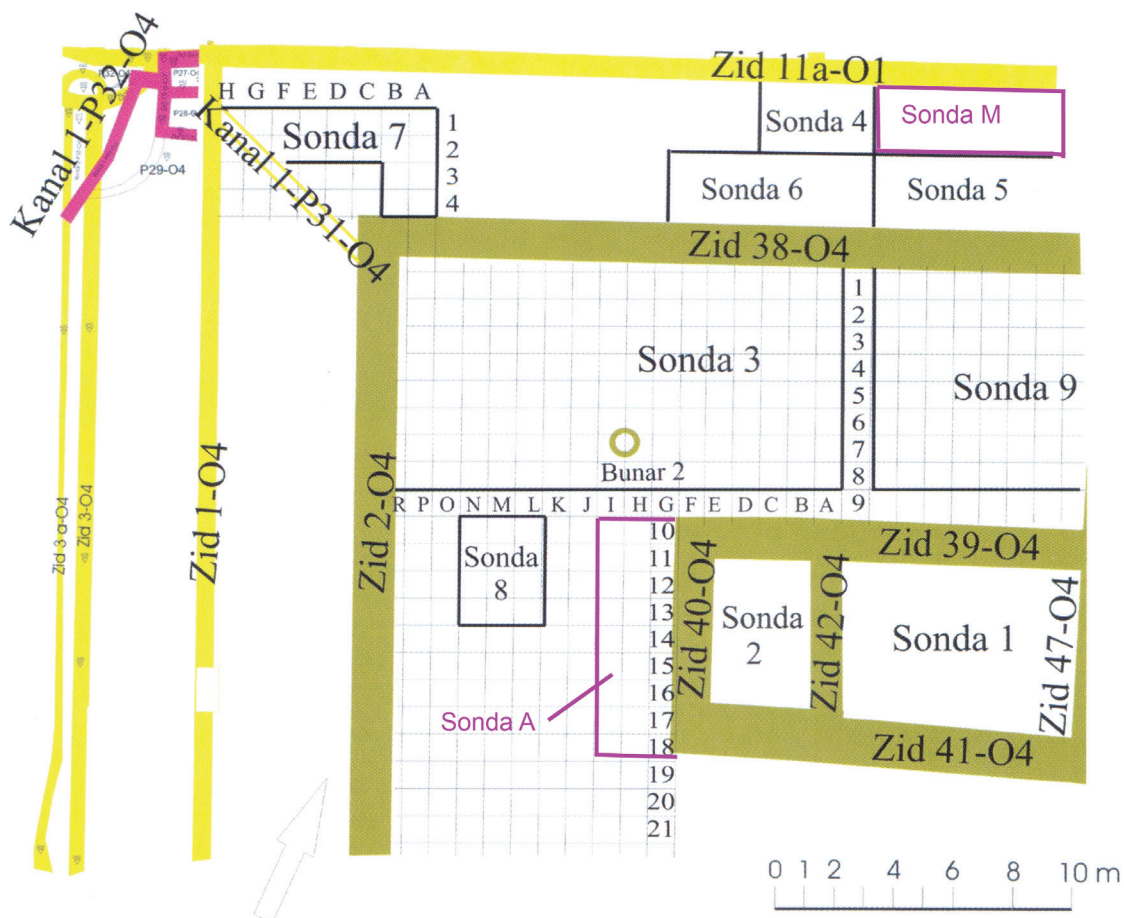
duljem razdoblju koje obuhvaća cijeli prvi milenij prije Krista. Smješteni su neposredno iznad žive stijene i visoki prosječno oko pola metra. Pripadaju željeznodobnom razdoblju histarske kulture i razdoblju kasne Rimske Republike do sredine 1. st. pr. Kr., kada je osnovana rimska kolonija Pola (Starac 2009, 135-140). Osim fibula u tim su slojevima pronađeni gruba kuhinjska keramika u većim količinama, obična stolna keramika, keramika s crnim premazom, amfore, kosti i školjke (Starac 2009, 155, grafikon 1).

Slojevi 62-07 i 67-07 iskopavani su 2007. u sondama označenim s A i M (slika 2). Sloj 32 (P31, 33-O4) označava drenažni sloj amfora koje su djelomično izvađene 2005. godine, kada su na terenu izgrađene dvije barake za smještaj amfora.

Najviše je fibula pronađeno u sondi 3 (ukupno 13), zatim jedna u sondi 2 (u sloju iznad kojeg je podignut hram), tri u prostoriji P33 - O4 (dvorište Herkulovog hrama) te 7 u prostoriji P31 - O4 (sjeverno od ogradnog zida hrama).

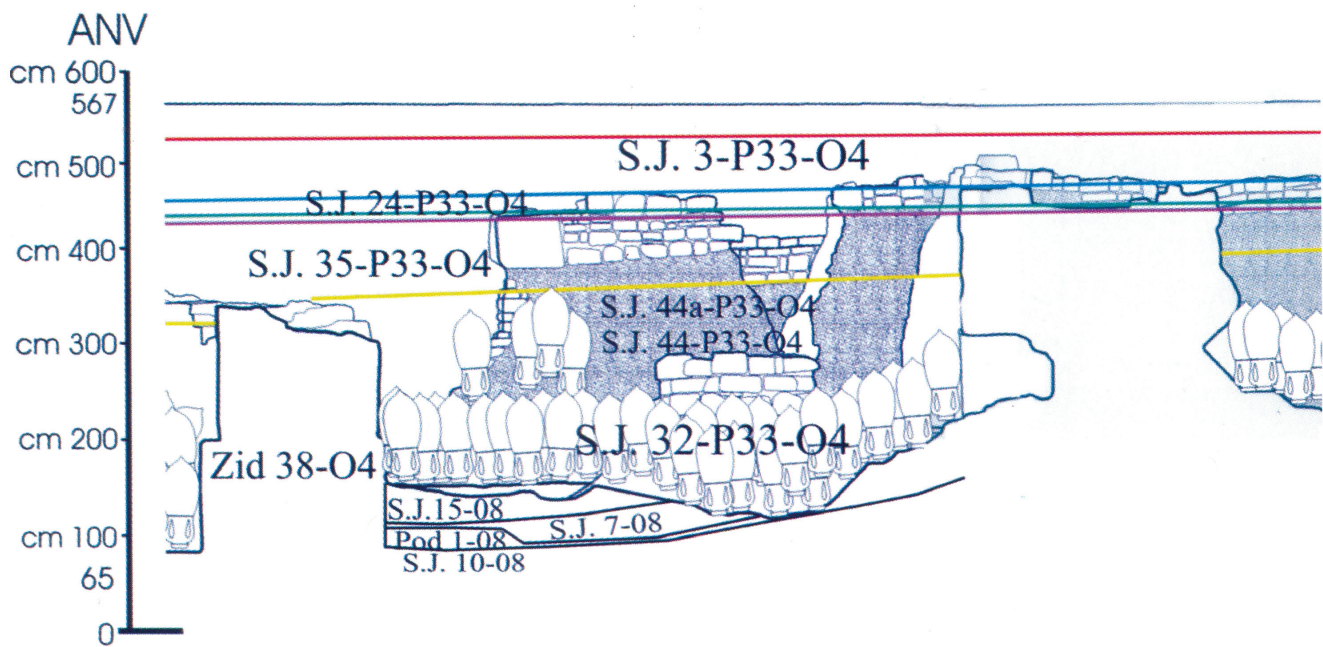
courtyard. Layer 15-08 is a drainage layer consisting of coarse quarry stones and bits of calcareous mortar, and it served as a base for the amphorae deposit. Coarse kitchen pottery, common tableware, red- and black-slipped pottery, grey tableware, whorls, amphorae, glass, iron items, tegulae, bricks, tiles, bones and sea shells were also discovered in these layers in addition to fibulae (Starac 2009, 155, Graph 1).

Layers 8-08 and 26-08, located underneath the layers of fill, were created through sedimentation before the erection of the terrace in the course of a longer period of time that encompasses the entire first millennium BC. They are situated immediately above the bedrock and measure on average approximately half a meter. These layers belong to the Iron Age period of Histrian culture and the period of the late Roman Republic up to the middle of the 1st century BC, when the Roman colony of Pola was founded (Starac 2009, 135-140). Except for the unearthed fibulae, in these layers there were also greater quantities of coarse kitchenware, common tableware, black-slipped pottery, amphorae, bones and sea shells (Starac 2009, 155, Graph 1).



Sl. 2 Tlocrt nalazišta sa sondama: sonde A i M iskopavane su 2007., a ostale 2008./2009. (Starac 2009, 125, sl. 2)

Fig. 2 Ground-plan of the site with probes: probes A and M were excavated in 2007, the remaining probes were executed in 2008/2009 (Starac 2009, 125, Fig. 2)



Sl. 3 Prikaz stratigrafije u P33-O4 (Starac 2009, 134, sl. 18)

Fig. 3 A depiction of the stratigraphy in P33-O4 (Starac 2009, 134, Fig. 18)

U prostoriji P 31-O4 u drenažnom sloju s naopako okrenutim amforama (S.J. 32-P31-O4), iskopavanim 2005. godine, pronađena je fibula tipa *Schüssel*, koja datira u fazu Lt D1. Ispod tog sloja u sondi M, iskapanoj 2007. u sloju blata (S.J. 67-O7), pronađene su fibule iz 2. i prve polovice 1. st. pr. Kr.

U prostoriji P33-O4 u sloju s naopako okrenutim amforama (S.J. 32-P33-O4), iskopavanom 2005., pronađena je fibula (Kastav ili Picugi?) iz 2. i 1. st. pr. Kr. Ispod u sloju S.J. 62-07 u sondi A pronađene su zmijolike fibule iz 6. st. pr. Kr.

Unutar hrama u sloju koji je nastao taloženjem prije njegove izgradnje pronađena je *sanguisuga* fibula iz 6. st. pr. Kr.

Ostale fibule pronađene su u sondi 3, koja obuhvaća sjeverozapadni dio dvorišta Herkulovog hrama. Fibule od 3. do pol. 1. st. pr. Kr. istovremene su s pravokutnim popločanim objektom, dok su starije fibule vremenski povezane sa starijim objektom i očuvanim zidovima.

Kod građevinskih zahvata sredinom 1. st. pr. Kr. došlo je do miješanja starijih slojeva s ostacima arhitekture pa su se tako starije fibule našle u slojevima koji su služili kao podloga za drenažni sloj amfora te i u samom sloju s naopako okrenutim amforama tipa Lamboglia 2.

Kod imenovanja fibula nastojao se koristiti termin autora koji je izdvojio i opisao pojedini oblik. Rasprostranjenost fibula prikazana je kartama, koje su nadopunjene pulskim nalazištem.

Layers S.J. 62-07 and S.J. 67-07 were excavated in 2007, in probes that were marked A and M (Fig. 2). Layer S.J. 32 is a drainage layer consisting of amphorae that were partially retrieved in 2005 in order to erect two field barracks for the storage of amphorae.

The greatest number of fibulae was unearthed in probe 3 (a total of 13), then there was the single fibula from probe 2 (in a layer above which the temple was erected), three in room P33 - O4 (the courtyard of the temple of Hercules), and in room P 31 - O4 (to the north of the enclosure wall of the temple of Hercules).

In room P 31-O4, in the drainage layer featuring amphorae that were turned upside down (S.J. 32-P31-O4), which was excavated in 2005, a fibula of the *Schüssel* type was discovered, dated to the Lt D1 phase. Underneath this layer, in probe M, excavated in 2007, in a layer of mud (S.J. 67-O7), fibulae from the 2nd and first half of the 1st century BC were discovered. In room P33-O4, in a layer with amphorae that were turned upside down (S.J. 32-P33-O4), which was excavated in 2005, a fibula (Kastav or Picugi?) from the 2nd and 1st century BC was unearthed. Underneath, in layer S.J. 62-07, in probe A, serpentine fibulae from the 6th century BC were discovered.

Within the temple, in a layer that was created through sedimentation before the erection of the temple, a *sanguisuga* fibula from the 6th century BC was discovered.

KRONOLOŠKI PRIKAZ FIBULA

1. Tip *sanguisuga*

Najstarija na nalazištu je fibula tipa *sanguisuga* (T. 1:1). Fibula ima polukružni puni luk ovalnog presjeka, ukrašen na kraju luka poprečnim urezima. Noga i opruga nedostaju. Luk je deformiran zbog gorenja u vatri.

A. Nascimbene je u objavi materijala s nalazišta Caverzano di Belluno (Nascimbene 1999, 42 - 47) *sanguisuga* fibulu podijelila u 4 tipa (tip V - VIII). Po toj podjeli pulska fibula odgovarala bi tipu VIII ("*fibula a sanguisuga con anima in materiale refrattario e staffa con bottone a vaso*", fig. 9/64-67), koja ima neukrašenu sredinu luka, dok su krajevi ukrašeni plitkim urezima. Tip bi odgovarao tipu "*a sanguisuga con bottone a vaso*", tipu C, varijanta h, koja ima krajeve luka ukrašene plitkim rebrima, po podjeli P. von Eles Masi.

Primjer ovakve fibule pronađen je u grobnici Benvenuti 98 u Este, a datira u zadnju četvrtinu 6. st. do sredine 5. st. pr. Kr. (Nascimbene 1999, 47). Sličan je i primjer iz groba 1670 nekropole sv. Lucija koji datira u stupanj Sv. Lucija II b (Teržan *et al.*, 1984, tav. 159, C, 1-2).

Dunja Glogović je u knjizi o fibulama starijeg željeznog doba na hrvatskoj obali ovaj tip podijelila u dvije varijante, A i B (Glogović, 2003, 55, T. 66A). Po toj podjeli ova fibula pripadala bi varijanti B, s lukom ukrašenim horizontalnim uzdužnim urezima ili poprečnim rebrima na krajevima luka te s dugom nogom za prihvat igle, koja datira u 6. st. pr. Kr.

U Istri su fibule ovog tipa pronađene u Nezakciju (Mihovilić 1972, T. 38:19; Mihovilić 2001a, T.141b:4; Glogović 2003, 55, T.49:414) i Picugima (Amoroso 1889, T.VII:5; Glogović 2003, T. 49:415).

Fibule ovog tipa javljaju se u kulturi Este krajem 7. i traju kroz 6. st. pr. Kr. U kulturi Histra javljaju se u 3. stupnju (Gabrovec, Mihovilić 1987, T. XXXIII, 8, Picugi, grob I/14).



Sl. 4 Fibula tipa *sanguisuga*
Fig. 4 A *sanguisuga* type fibula

The remaining fibulae were unearthed in probe 3 that covers the northwestern section of the courtyard of the temple of Hercules. Fibulae from the 3rd to the middle of the 1st century BC are from the same period of time as the rectangular structure with flagstones, while the older fibulae are connected in time with an older structure and preserved walls.

During construction works in the middle of the 1st century BC, the older layers were upset and mixed with architectural remnants, and it was thus that older fibulae suddenly found themselves in layers that served as a base for the drainage layer consisting of amphorae, and in the layer consisting of amphorae of the Lamboglia 2 type, which were turned upside down.

When naming fibulae, an effort was made to use the term of the author who singled out and described that particular form. The spread of certain types of fibulae is shown with the help of charts that are complemented with the site at Pula.

A CHRONOLOGICAL PRESENTATION OF FIBULAE

1. *Sanguisuga* type

The oldest fibula on site is one of the *sanguisuga* type (T. 1:1). This fibula has a semi-circular solid bow with an oval cross-section; at the end of the bow are decorations in the form of transverse incisions. The foot and the spring are missing. The bow itself is deformed due to fire. When publishing the materials from the Caverzano di Belluno site, A. Nascimbene (Nascimbene 1999, 42 - 47) mentioned four types of *sanguisuga* fibulae (types V - VIII). In accordance with this classification, the fibula from Pula would correspond with type VIII ("*fibula a sanguisuga con anima in materiale refrattario e staffa con bottone a vaso*", Fig. 9/64-67), featuring a non-decorated middle section of the bow whose ends are decorated with shallow incisions. This type corresponds to the type "*a sanguisuga con bottone a vaso*", type C, variant h, whose bow ends are decorated with shallow ribs in accordance to the classification of P. von Eles Masi.

Just such a fibula was unearthed in the Benvenuti 98 grave vault at Este, which is dated into the period from the last quarter of the 6th century to the middle of the 5th century BC (Nascimbene 1999, 47). A similar specimen comes from grave 1670 at the Sveta Lucija necropolis, dated into the Sveta Lucija II b period (Teržan *et al.*, 1984, Tab. 159, C, 1-2).

In a book about Early Iron Age fibulae on the Croatian coast, Dunja Glogović classified this type into two variants, A and B (Glogović, 2003, 55, T. 66A). In accordance with this classification this particular

2. Tip zmijolike fibule s trakastim lukom savijenim u dvostruku petlju

Ovaj tip ima trakasto proširen luk koji se savija u dvostruku petlju i ima okruglu pločicu na prijelazu luka u iglu (umjesto opruge) te gumb na kraju noge.

Prvi primjer (T. 1:2) ima očuvanu nogu s dva kugličasta zadebljanja i dio trakastog luka odlomljenog na prvoj petlji. Karakteristično je za ovaj tip da ima jednu, a ne dvije kuglice na kraju noge. Jedina analogija za primjer s dvije kuglice na nozi nađena je na nalazištu Roje pri Trebelnem (Dular 2003, T. 29:4), gdje ovakva fibula datira u stupanj zmijolike fibule.

Od drugog primjerka (T. 1:4) očuvan je luk s dvije petlje i pločica na prelasku luka u nogu.

A. Nascimbene je u objavi s nalazišta Ceverzano di Belluno podijelila zmijolike fibule u 7 tipova (XVIII - XXI, XXIII, XXVIII, Nascimbene 1999, 59-63). Po njenoj podjeli ove fibule pripadale bi tipu XXI (*"fibula ad arco serpeggiante in fetuccia con un gomito, un occhiello e piccolo disco fermapieghe"*, Nascimbene 1999, fig. 11/100-102). Osobitost ove varijante je trakasto prošireni luk kojem se širina smanjuje od gornjeg prema donjem dijelu. Ovaj se tip rijetko pojavljuje u Venetu, dok se češće javlja na prostoru kulture Golasecca, iako u nejasnom kontekstu (Nascimbene 1999, 61). Analogije se nalaze u Este u grobnici Benvenuti 124, koja datira u sredinu 6. st. pr. Kr.

U Istri su ovakve fibule poznate iz Nezakcija, iz grupe *"Oggetti dispersi"* iz iskopavanja 1901. (Mihovilić 2001a, T. 54:12, 13, 15-24).



Sl. 5 Zmijolika trakasta fibula

Fig. 5 A serpentine strap fibula

3. Tip zmijolike fibule s krilcima

Ove su fibule mlađe od zmijolikih, od kojih vuku porijeklo. Na primjeru T. 1:5, očuvan je samo luk okruglog presjeka s krilcima pričvršćenim zakovicom. Po podjeli A. Nascimbene (Nascimbene 1999, 65-68), primjer bi odgovarao tipu XXVII (*"fibula a drago con dischetti e appendice a tre globetti"*, fig. 13/121). Ovaj se

fibula would be variant B, with a bow decorated with longitudinal horizontal incisions or transverse ribs at the bow terminals, and a long foot that accommodates the pin dated into the 6th century BC.

Fibulae of this type were discovered in Istria at Nesactium (Mihovilić 1972, T. 38:19; Mihovilić 2001a, T.141b:4; Glogović 2003, 55, T. 49:414) and Picugi (Amoroso 1889, T.VII:5; Glogović 2003, T. 49:415).

Fibulae of this type appear in the Este culture towards the end of the 7th century and they last throughout the 6th century BC. They appear in the third phase of the culture of the Histri (Gabrovec, Mihovilić 1987, T. XXXIII, 8, Picugi, grave I/14).

2. A type of serpentine fibula with a strap bow bent into a double coil

This type has a bow widened in a strap-like manner, which features a double coil and has a small circular plate at the transition of the bow to the pin (in lieu of a spring), as well as a button at the terminal of the foot.

The first specimen (T. 1:2) has a preserved foot with two spherical thickenings and a section of the strap bow that has been broken off at the first coil. Characteristic for this type is a single small sphere at the terminal of the foot, and not two of them. The only analogy for a specimen featuring two small spheres on the foot was discovered at the Roje pri Trebelnem site (Dular 2003, T. 29:4), where such a fibula was dated into the serpentine fibulae phase. The other specimen (T. 1:4) has a preserved bow with two coils and a small plate at the transition of the bow to the foot.

When publishing the results of the explorations at the site of Ceverzano di Belluno, A. Nascimbene classified serpentine fibulae into seven types (XVIII - XXI, XXIII, XXVIII, Nascimbene 1999, 59-63). In accordance with her classification these fibulae belong to type XXI (*"fibula ad arco serpeggiante in fetuccia con un gomito, un occhiello e piccolo disco fermapieghe"*, Nascimbene 1999, Fig. 11/100-102). This variant is characterized by a bow widened in a strap-like manner, whose width decreases from the upper to the lower section. This type is rather rare in Veneto, appearing more frequently in the area of the Golasecca culture, albeit in an undefined context (Nascimbene 1999, 61). Analogies can be found at Este, in grave vault Benvenuti 124, dated into the middle of the 6th century BC.

Such fibulae in Istria are known from Nesactium, where they were within the *"Oggetti dispersi"* group unearthed in 1901 (Mihovilić 2001a, T. 54:12, 13, 15-24).

tip nalazi u sjeverozapadnoj Italiji, Sloveniji, a primjer je poznat i iz Donje Doline u Bosni te iz Nezakcija (Mihovilić 2001a, T. 23:21, T. 54:6,7). Datira u drugu polovicu 6. st. pr. Kr. (Nascimbene 1999, 68).



Sl. 6 Zmijolika fibula s krilcima
Fig. 6 A serpentine fibula with wings



Sl. 7 Ranolatenska fibula s listolikim lukom
Fig. 7 An Early La Tène fibula with a leaf-shaped bow

Zmijolike fibule pripadaju repertoaru predmeta koji se u 6. st. pr. Kr. javljaju na prostoru sjevernog Jadrana i prisutni su u svim kulturnim grupama tog područja. Raširene su na prostoru kulture Golaseca, u Venetu i Furlaniji sve do svetolucijskog prostora i datiraju u 6. i 5. st. pr. Kr. (Sakara Sučević 2004, 23).

One se u kulturi Histra javljaju već krajem 3. stupnja, a česte su u 4. stupnju (Gabrovec, Mihovilić 1987, 312). U trgovini od 7. do 4. st. pr. Kr. na sjevernom Jadrana česti su nalazi pojedinačne varijante fibula s dva ili tri gumba na luku, a *navicella*, *sanguisuga* s dugom nogom, zmijolike s krilcima i Certosa koje se nalaze među domaćim tipovima u Liburnskoj, Japodskoj, Dolenjskoj i grupi Sv. Lucija te u centralnoj Italiji, odakle su vjerojatno i stizale na istočnu obalu (Batović 1976, 89). Peroni je pojavu istih tipova predmeta na područjima oko Jadrana podijelio u tri grupe, po putovima kojima se kretala razmjena. U tom smislu govori se o *pomorskoj*, *cirkumjadranskoj* i *istočno-alpskoj* *komponenti jadranske "koiné"* (Peroni 1976, 96-104). Zmijolike fibule pripadaju grupi koja se po njemu mogla širiti kopnenim putovima, ali ne preko otvorenog mora, odnosno, spada

3. A type of serpentine fibula featuring small wings

These fibulae are younger than the serpentine ones, from which they developed. Specimen T. 1:5 consists of a preserved bow with a circular cross-section, which also features small wings fastened by a rivet. In accordance with the classification by A. Nascimbene (Nascimbene 1999, 65-68), this specimen would correspond to type XXVII ("*fibula a drago con dischetti e appendice a tre globetti*", Fig. 13/121). This type was spread in northwestern Italy, Slovenia, and such a specimen also appears at Donja Dolina in Bosnia, as well as at Nesactium (Mihovilić 2001a, T. 23:21, T. 54:6, 7). They are dated into the second half of the 6th century BC (Nascimbene 1999, 68).

Serpentine fibulae belong to a group of objects appearing in the region of the northern Adriatic in the 6th century BC, and they are present in all cultural groups in this area.

Serpentine fibulae are widespread in the area of the Golaseca culture, in Veneto and Friuli, up to the Sveta Lucija region, and they are dated into the 6th and 5th century BC (Sakara Sučević 2004, 23).

In the culture of the Histri they appear already towards the end of the third phase, and they are quite common in the fourth phase (Gabrovec, Mihovilić 1987, 312).

As a result of trade from the 7th to the 4th century BC on the northern Adriatic, there were frequent finds consisting of individual variants of fibulae with two or three buttons on the bow, a *navicella*, of the *sanguisuga* type with a long foot, serpentine fibulae with wings, and Certosa fibulae that are amongst local types in the Liburnian, Iapodan, Lower Carniola, and Sveta Lucija groups, as well as in central Italy from where they were probably transported to the eastern coast (Batović 1976, 89).

Peroni divided the appearance of the same types of objects in the regions around the Adriatic into three groups in accordance with the commercial routes that were used to transport the goods. In this respect we speak about the *maritime*, *circum-Adriatic* and the *eastern-Alpine component of the Adriatic "koiné"* (Peroni 1976, 96-104). Serpentine fibulae belong to a group that according to him could have spread using land routes, not the ones across the open sea, which thus belongs amongst *circum-Adriatic components* (Peroni 1976, 96, 101, Fig. 2/I:3-6).

4. Early La Tène scheme fibula featuring a leaf-shaped bow

Fibula T. 1:3 belongs to fibulae of the early La Tène scheme, whose foot extension has been everted backwards towards the bow, but has not yet been

među *circumjadranske komponente* (Peroni 1976, 96, 101, sl. 2/I:3-6).

4. Fibula ranolatenske sheme s listolikim lukom

Fibula T. 1:3 pripada formi ranolatenske sheme kojima je produžetak noge izvijen unazad prema luku, ali još nije pričvršćen. Luk je najčešće okruglog presjeka, ali može biti i listoliko proširen, kao na ovom primjeru. Produžetak noge najčešće je ukrašen kugličastim zadebljanjima. Analogije za ovakve fibule s širokim lukom nalaze se u Vinici (Gabrovec 1966, T. 15: 3, 5), tj. u Viniškom horizontu, koji je povezan s Kolapijanima (Božič 2001, 192). Horizont datira u Lt A i B i početak faze Lt C (4. i 3. st. pr. Kr.) po srednjoeuropskoj kronologiji (Gabrovec 1966, 191). Slična je fibula pronađena u Nezakciju, u centralnom dijelu hrama B (Mihovilić 2009, Fig. 2:1). Ima nizak, listoliki luk i nogu J presjeka, i slična je tipu XVIII A po A. M. Adam (Mihovilić 2009, 210), koja takve fibule naziva "*fibule semplici del La Tène antico*". Za razliku od primjera iz Nezakcija, fibula iz Pule ima širi i viši luk.

5. Fibula tipa Certosa VIIIf (po Teržan 1976)

Ova varijanta Certosa fibule zastupljena je s dva primjera. Prva (T. 2:1) je pronađena čitava, dok je od druge (T. 2:2) očuvana samo noga s gumbom na kraju. Na oba primjera zaključni gumb ukrašen je dvostukim trokutom, a na rombičnom završetku luka vidljivi su tragovi paralelnih kosih ureza. Proširena noga za prihvat igle je T presjeka. Čitava fibula ima na najvišem dijelu luka polukuglasto zadebljanje raščlanjeno plitkim rebrima i oprugu s dva navoja.

Certosa fibule javljaju se krajem 6. st. pr. Kr. na područjima južno od rijeke Po, sa središtem u Bologni i u jugozapadnom predalpskom svijetu, od Este do Dolenjske (Teržan 1976, 318). Certoške fibule varijante VII s podvarijantama pojavljuju se na prostoru od Bologne do Bosne (Teržan 1976, 371, sl. 26, 44, 42). Rasprostranjene su u Istri, Liburniji, japodskim nalazištima u Pounju, Sloveniji i nešto manje u sjevernoj Italiji.

U Istri su već poznate iz Pule (Gnirs 1903, 82, fig. 79), Kaštelira kod Nové Vasi (Sakara Sučević 2004, 162, 47, 50¹), Kringe (Šonje 1966, T.6:14) i Sermina (Horvat 1997, T. 1:1)

Najmlađi su oblik među fibulama Certosa. Varijante e i f, posljednja halštatska izvedba certoških fibula, datiraju

¹ Sakara Sučević opredjeljuje odlomke noga ukrašene urezanim ukrasom V među tipove VI, VII i V po Teržan (Sakara Sučević 2004, 24).

fastened to the bow. The bow has mostly a circular cross-section, but it can also feature a leaf-shaped widening as is the case with this specimen. The extension of the foot is in the majority of cases decorated with spherical thickenings. Analogies for these types of fibulae featuring a wide bow can be found at Vinica (Gabrovec 1966, T. 15:3, 5), i.e., in the Vinica horizon that is connected with Colapiani (Božič 2001, 192). The horizon is dated to Lt A and B and the beginning of phase Lt C (4th and 3rd century BC) in accordance with the Central European chronology (Gabrovec 1966, 191). A similar fibula was unearthed at Nesactium in the central section of temple B (Mihovilić 2009, Fig. 2:1). The fibula has a low, leaf-shaped bow and a foot with a J-shaped cross section, and is similar to type XVIII according to A. M. Adam (Mihovilić 2009, 210), who calls such fibulae "*fibule semplici del La Tène antico*". In contrast to the specimen from Nesactium, the fibula from Pula features a wider and higher bow.



Sl. 8 Karta rasprostranjenosti zmijolikih fibula s krilcima, tip XXVII (po Nascimbene 1999, fig. 37)

Fig. 8 A chart showing the dissemination of serpentine fibulae with wings of the XXVII type (after Nascimbene 1999, Fig. 37).

nalazišta / sites:

- Boštanj, Brusnic, Caverzano, Casan, Concordia, Donja Dolina, Este, Hallstatt, Libna, Magdalenska gora, Malence, Nezakcij, Niederrassen-Vandoies di Sopra, Podzemelj, Redipuglia, Rovišče, Most na Soči, Stična, Vače, Vandoies di Sopra, Vinij Vrh, Vinkov vrh, Volčje njive, Zagorje, Pula

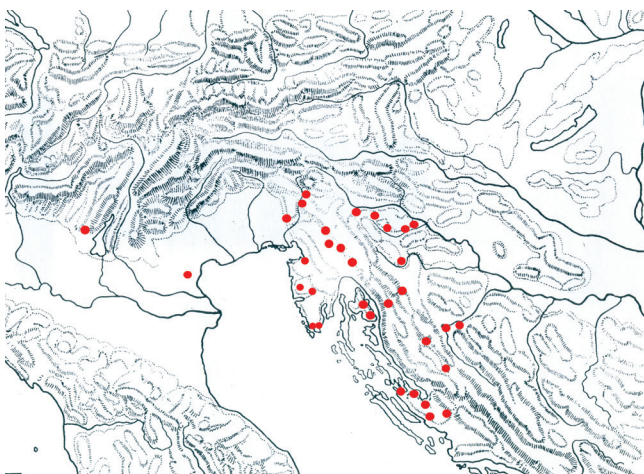
5. Certosa VIIIf type fibula (after Teržan 1976)

This variant of the Certosa fibula is represented with two specimens. The first (T. 2:1) was unearthed complete, whereas the other (T. 2:2) has only its foot with the button on the terminal. The terminal button is in both

u Lt B2-C, kasno 4. ili 3., do kraja 2. st. pr. Kr. Mazinski depo s ovakvom fibulom datiran je novcem u prijelaz 2. u 1. st. pr. Kr., što dokazuje trajanje tih fibula kroz cijelo srednjolatsko razdoblje (Teržan 1976, 382).



Sl. 9 Fibula vrste Certosa VIIIf
Fig. 9 A certosa VIIIf type fibula



Sl. 10 Karta rasprostranjenosti fibula vrste Certosa VIIIf (po Teržan 1976, 371, 42)

Fig. 10 A chart showing the dissemination of Certosa VIIIf type fibulae (after Teržan 1976, 371, 42)

nalazišta / sites:

- Baška, Bodrež, Bribir, Čepno, Dalmacija, Drnovo, Golubić, Gradina v Jagodnji gornji, Idrija pri Bači, Grobnik, Jezerine, Kompolje, Krbavica, Kringa, Krk, Ljubač, Ljubljana, Magdalenska gora, Mazin, Medea, Nin, Padova, Picugi, Pula, Ribić, Slavina, Socerb, Stara Sušica, Šmarjeta, Tatábanya, Valična vas, Vinica

FIBULE SREDNJOLATENSKE SCHEME

Fibule srednjolatske sheme imaju sponom pripojen nastavak nožice na luk. Ovakva shema fibula počinje se koristiti krajem ranog latena. Naziv se odnosi upravo na izvedbu spoja nožice s lukom i ne može se smatrati kronološkom odrednicom, jer su takve fibule česte u kasnolatskim slojevima te predstavljaju vodeći tip tog perioda (Guštin 1987, 49).

M. Guštin je fibule srednjolatske sheme podijelio u dva tipa: raniji tip Kastav, s varijantama Kastav, Idrija i Ribić, i kasnolatski tip Picugi, s varijantama Vir i

cases decorated with a double triangle, and visible on the rhomboid terminal of the bow are traces of parallel slanting incisions. The widened foot that accommodates the pin has a T-shaped cross-section. This specimen has a semi-spherical thickening divided by shallow ribs, and a spring with two coils on the highest section of the bow. Certosa fibulae appear towards the end of the 6th century in areas situated to the south of the Po River, their center being at Bologna and in the southwestern Pre-Alpine world extending from Este to Lower Carniola (Teržan 1976, 318). Certosa fibulae of the VII variant, with sub-variants, appear in the region from Bologna to Bosnia (Teržan 1976, 371, Fig. 26, 44, 42). They are widely spread in Istria, Liburnia, on Iapodian sites at Pounje, in Slovenia, and to a lesser extent in northern Italy.

In Istria they are already known from Pula (Gnirs 1903, 82, Fig. 79), Kaštelir near Nova Vas (Sakara Sučević 2004, 162, 47, 50¹), Kringa (Šonje 1966, T. 6:14) and Sermin (Horvat 1997, T. 1:1).

They represent the youngest form amongst Certosa fibulae. Variants e and f, the last Hallstatt version of Certosa fibulae, are dated into Lt B2-C, the late 4th or the 3rd century, up to the end of the 2nd century BC. The depot at Mazin, featuring such a fibula, was based on coins dated to the transition period from the 2nd to the 1st century BC, which corroborates that these fibulae were present throughout the entire Middle La Tène period (Teržan 1976, 382).

FIBULAE OF THE MIDDLE LA TÈNE SCHEME

Fibulae of the Middle La Tène scheme feature an extension of the foot, which had been fastened to the bow with the help of a clamp. Such a scheme for fibulae began to be used towards the end of the Early La Tène period. The title Fibulae of the Middle La Tène scheme refers in particular to the version featuring a foot joined to the bow, and as such it cannot be regarded as a chronological term of reference because such fibulae were common in Late La Tène strata and represent the leading type of this period in time (Guštin 1987, 49).

M. Guštin classified fibulae of the Middle La Tène scheme into two types: the earlier Kastav type, with the variants Kastav, Idrija and Ribić, and the Late La Tène type - Picugi, with the variants Vir and Picugi. Fibulae of the Kastav type were also studied by D. Božič, who presented his findings in a lecture held on the 10th of

¹ Sakara Sučević defines foot fragments decorated with an incised V-shaped motif, amongst types VI, VII and V, in accordance with Teržan (Sakara Sučević 2004, 24).

Picugi. Fibule tipa Kastav obradio je i D. Božič i izložio na predavanju 10. lipnja 2011. u štajerskom Wildonu, gdje je izdvojio varijantu Idrija kao zaseban tip (Idrija pri Bači), ali je obrazložio da se varijante Nezakcij, Ribić i Ulaka trebaju smatrati varijantama tipa Kastav te smo mi prihvatili njegovu podjelu.

Fibula na T. 3:5 ima izvedbu srednjolatske sheme iako nije očuvana nožica spojena s lukom. Slična je fibuli pronađenoj u dvorištu Knežjega dvorca u Celju (Lazar 1996, T. 1:5), s lećastim presjekom luka. Slične fibule poznate su iz naseobinskih iskopavanja u Stični (Frey, Gabrovec 1969, sl. 2:3) i iz Libne (Guštin 1976, 38, T. 14:7). Datirane su u stupanj Lt D1, odnosno kraj 2. i u prvu polovicu 1. st. pr. Kr.

6. Tip Kastav, varijanta Kastav

Fibule tipa Kastav imaju po Božičevoj podjeli samo jedno zadebljanje na izvijenoj nozi. Spona je kratka i ukrašena poprečnim urezima. Luk s oblim prijelazom u nogu ovalnog je, segmentnog ili bikonveksnog presjeka. Opruga je oblikovana iz spljoštene žice. Varijanta Kastav ima obično 6 navoja. Jedan navoj je s unutrašnje strane omotan oko luka. Javljaju se u Kastvu, okolici Kopra i Krasu, a po jedan primjer zabilježen je u Posočju - Repelc, Furlaniji - Akvileja, na Goleku pri Vinici i u Pounju - Ribić (Božič 2011, 254).

Fibula tipa Kastav, varijanta Kastav (T. 2:4), ima oprugu omotanu oko luka s unutrašnje strane, s tri namotaja na svakoj strani. Na produžetku nožice je gumb lećastog presjeka, a noga je pričvršćena za luk sponom. Pulski primjer je iskrivljen i nedostaje dio izvijene nožice. Očuvana je samo jedna strana opruge.

Fibule tipa Kastav, varijante Kastav, najprije su pronađene na Grobniku (Guštin 1987, 46, fig. 5,3), na groblju Mišinci (isti, 47, fig. 6,2; 7,1,6).

Blečić Kavur (2009, 198, sl. 2) donosi kartu rasprostranjenosti i napominje da se po novijim istraživanjima može zaključiti da je ova varijanta raširena na cijelom području *Caput Adriae*. Neki elementi, kao što su dizajn i dekoracija nožice ili obrada opruge, upućuju na lokalnu komponentu koja se razvila na perifernom keltskom području pod utjecajem novoosnovane kolonije Akvileje (Blečić Kavur 2009, 200).

Tip se datira u srednjolatsko razdoblje (3. i 2. st. pr. Kr.), po nalazima iz grobova 11, 10, 8 i 2 s groblja Mišinci (Guštin 1987, 50).

June, 2011, at Wildon in Styria. There he singled out the Idrija variant as a separate type (Idrija pri Bači), but he also explained that the Nezakcij, Ribić and Ulaka variants should be regarded as variants of the Kastav type, and we accepted his classification.

The fibula on T. 3:5 has been executed in a Middle La Tène scheme, even though the foot joined to the bow has not been preserved. It is similar to the fibula discovered in the courtyard of Knežji Dvorec at Celje (Lazar 1996, T. 1:5), and features a bow with a lens-shaped cross section. Similar fibulae are known to us from the excavations in settlements at Stična (Frey, Gabrovec 1969, Fig. 2:3) and Libna (Guštin 1976, 38, T. 14:7). They are dated to the Lt D1 phase, or the end of the 2nd and first half of the 1st century BC.



Sl. 11 Fibula srednjolatske sheme

Fig. 11 A fibula of the Middle La Tène scheme

6. The Kastav variant of the Kastav type

According to the classification made by Božič, fibulae of the Kastav type have but one thickening on the everted foot. The clamp is short and decorated with transverse incisions. The bow featuring a smooth transition to the foot has an oval, segmental or biconvex cross-section. The spring is formed out of flattened wire. The Kastav variant has commonly six coils. Part of the spring is wound about the bow on the interior side. They appear at Kastav, in the surroundings of Koper and in the Karst region, with a single specimen in Posočje - Repelc, Friuli - Aquileia, on Golek near Vinica, and in Pounje - Ribić (Božič 2011, 254).

The Kastav variant of the Kastav fibula (T. 2:4) has its spring wound about the bow on the interior side, featuring three coils on each end. Located on the extension of the foot is a button with a lens-shaped cross-section, and the foot itself is fastened to the bow with a clamp.

The specimen from Pula is bent and a section of the everted foot is missing. Only one side of the spring was preserved.

The Kastav variant of the Kastav fibula was first discovered at Grobnik (Guštin 1987, 46, Fig. 5, 3), in the Mišinci necropolis (same, 47, Fig. 6, 2; 7, 1, 6).



Sl. 12 Fibula tipa Kastav, varijanta Kastav
Fig. 12 A Kastav variant of the Kastav type fibula

7. Tip Kastav, varijanta Nezakcij

Već je K. Mihovilić zamijetila da se fibule tipa Kastav u Istri razlikuju od ostalih varijanti po urezima na gumbu na produžetku noge (Mihovilić 1996, 52). Kao posebna varijanta Nezakcij izdvojene su u diplomskom radu P. Gergoleta na Sveučilištu u Udinama te i prihvaćene u literaturi (Sakara Sučević 2004, 24). Varijantom Nezakcij posebno se bavila Martina Blečić Kavur (2009.), koja je ističe kao zaseban tip koji se proizvodi lokalno u Istri, po uzoru na strane primjere, te donosi i kartu rasprostranjenosti (Blečić Kavur 2009, 203, fig. 5). Po Božičevom opisu varijanta Nezakcij ima jednaku oprugu kao fibule varijanti Kastav i Ribić, i jednak završetak noge kao kod varijante Ribić.

Od drugih se varijanti razlikuje po tome što je manja, ima koljenasti obris luka, na luku ima još jedan gumb, kao i na unatrag izvijenom nozi, te su oba ukrašena. Javlja se u Istri, na Kastvu iznad Rijeke i na Cresu (Božič 2011, 254).

Fibule (T. 2:3 i 5) određene su kao varijanta Nezakcij po Gergoletu. Od prvog primjera (T. 2:3) očuvan je samo tanak luk s urezima na gumbu, dok je drugi primjer (T. 2:5) prilično oštećen jer je gorio u vatri. Pod ovaj tip uvršten je zbog koljenastog prelaska opruge u luk i traga rastopljenog gumba na luku.

Primjeri su poznati iz Nezakcija (Mihovilić 1996, 52, T.1,8-9; 2009, fig. 2, 5-6), Berma (Guštin 1987, 46, fig. 4, 5-6) i Pule iz iskopavanja kod Herkulovih vrata (Mihovilić 2001b, 14; 2009, fig. 3, 24), kao i s područja nekropole koja nosi naziv Fondo Dejak (Mihovilić 2009, fig. 3, 25). Nadalje, poznati su primjeri iz Picuga, Piran-Fornače, Koper-okolica, Kaštelira kod Nove Vasi, Socerba, a izvan Istre s nalazišta Kastav (Blečić Kavur 2009, 204, fig. 5). Datirane su u razdoblje 3. i 2. st. pr. Kr., ali s mogućim trajanjem do u 1. st.

Blečić Kavur (2009, 198, Fig. 2), brings a chart showing its dissemination and notes that according to newer studies it is possible to conclude that this variant is spread in the entire *Caput Adriae* region. Some of the elements such as the design and decoration of the foot, or the execution of the spring, indicate a local component that developed in the peripheral Celtic region under the influence of the newly founded colony of Aquileia (Blečić Kavur 2009, 200).

This type is dated to the Middle La Tène period (3rd and 2nd centuries BC) according to finds unearthed in graves 11, 10, 8 and 2 in the necropolis at Mišinci (Guštin 1987, 50).

7. The Nesactium variant of the Kastav type

Already K. Mihovilić had noted that Kastav type fibulae in Istria differ from other variants in that they have incisions on the button on the extension of the foot (Mihovilić 1996, 52). P. Gergolet singled it out as a separate Nesactium variant in his thesis at the University of Udine, and as such it was accepted in literature (Sakara Sučević 2004, 24). Martina Blečić Kavur (2009) studied extensively the Nesactium variant. She singles out this variant as a separate type produced locally in Istria, based on the model of foreign specimens, and brings a chart showing its spread (Blečić Kavur 2009, 203, Fig. 5).

According to the description by Božič, the Nesactium variant features the same spring as fibulae of the Kastav and Ribić variants, and the same terminal of the foot as the Ribić variant.

It differs from other variants in that it is smaller, the outline of the bow is knee-shaped, and it has another button on the bow as is also the case on the foot everted backwards, both of them being decorated. It appears in Istria, on Kastav above Rijeka, and on the Island of Cres (Božič 2011, 254).

Fibulae (T. 2:3 and 5) were defined as a Nesactium variant after Gergolet. Preserved from the first specimen (T. 2:3) is but a thin bow with incisions on the button, whereas the other specimen (T. 2:5) is severely damaged due to fire. It has been included into this type due to the knee-shaped transition of the spring to the bow, and the trace of a molten button on the bow.

Such specimens are known from Nesactium (Mihovilić 1996, 52, T. 1,8-9; 2009, Fig. 2, 5-6), Beram (Guštin 1987, 46, Fig. 4, 5-6) and Pula, from the excavations conducted near Hercules' gate (Mihovilić 2001b, 14; 2009, Fig. 3, 24), as well as from the area of the necropolis called Fondo Dejak (Mihovilić 2009, Fig. 3, 25). Furthermore, there are also specimens from Picugi, Piran-Fornače, the



Sl. 13: Fibula tipa Kastav varijanta Nezakcij

Fig. 13 A Nesactium variant of the Kastav type fibula

KASNOLATENSKE FIBULE

Fibule kasnolatenske sheme nemaju više spojen produžetak noge s lukom, već je taj spoj lijevan u obliku okviraste noge. Međutim, česti su i dalje tipovi srednjolatenske sheme (izvijena noga spojena s lukom) od kojih se neki javljaju tek u ovoj fazi.

Kasnolatenske fibule iz faze Lt D1s nalazišta su: tipovi Idrija pri Bači, Picugi, Almgren 65, Nova Vas, Nauheim II. 2, rana fibula tipa *Schüssel* i fibula *a staffa chiusa*. Tipovi Almgren 65, rana fibula tipa *Schüssel*, Nova Vas i Nauheim II. 2 mogu se uže datirati u fazu Lt D1b po srednjoeuropskoj kronologiji ili Lt It D2 po talijanskoj kronologiji, tj. od 100. do 70. g. pr. Kr. (Božič 2008, tab. 5).

8. Tip Idrija pri Bači

Po Božičevoj definiciji fibule imaju na izvijenoj nozi dva zadebljanja različite veličine. Spona je duga i ima na rubovima izrazita poprečna rebra. Luk koji ima koljenasti prijelaz u nogu uglavnom je okruglog, rijetko pravokutnog presjeka. Opruga je od žice okruglog presjeka i ima u pravilu 8, rijetko 7 navoja, od kojih je jedan s unutrašnje strane omotan oko luka. Fibule ovog tipa javljaju se u Posočju i Furlaniji, na Bohinju (Sv. Janez, objava u pripremi) i u Ljubljanskoj kotlini (Polhov Gradec, Kamin na Ljubljanskem barju i Tribuna u Ljubljani). Dijele se na varijante Polhov Gradec (s dva zadebljanja na izvijenoj nozi) i San Floriano (s tri zadebljanja na izvijenoj nozi). Datirane su u fazu Lt D1 (Božič 2011, 254)².

Po novoj tipologiji D. Božiča (Božič 2011, 253) izdvojen je ovaj tip koji je ranije smatran varijantom Idrija, tipa Kastav, po podjeli M. Guština (Guštin 1987, 49).

Fibula T. 3:1 tako pripada tipu Idrija pri Bači po Božiču. Pulska fibula slična je fibuli iz groba 5 iz Idrije pri Bači (Guštin 1991, T. 6:8). Ima nogu omotanu oko luka s unutrašnje strane, manji i veći gumb na nozi odvojen

surroundings of Koper, and Kaštelir near Nova Vas and Socerby; outside of Istria we have those from the site of Kastav (Blečić Kavur 2009, 204, Fig.5). They are dated into the period of the 3rd and 2nd centuries BC, possibly lasting into the 1st century.

LATE LA TÈNE FIBULAE

Fibulae of the Late La Tène scheme no longer have the extension of the foot joined to the bow, but rather, this connection was cast in the form of an open foot. However, types of the Middle La Tène scheme continue to be frequent (an everted foot joined to the bow), some of them appearing only in this phase.

The types of Late La Tène fibulae from phase Lt D1 from the site are: Idrija pri Bači, Picugi, Almgren 65, Nova Vas, Nauheim II.2, early *Schüsselfibel*, and an *a staffa chiusa* one. The types Almgren 65, early *Schüsselfibel*, Nova Vas and Nauheim II.2, can be more precisely dated to phase Lt D1b in accordance with the Central European chronology, or, to phase Lt It D2 following the Italian chronology, i.e., from 100 to 70 BC (Božič 2008, Tab. 5).

8. Idrija pri Bači type

According to a definition by Božič, these fibulae have two thickenings of varying size on the everted foot. There is a long clamp with distinctive transverse ribs on the edges. The bow that has a knee-shaped transition to the foot has for the most part a circular cross-section, and only rarely a rectangular one. The spring is made of wire with a circular cross-section and has, as a rule, eight, rarely seven coils. Part of the spring is wound about the bow on the interior side. Fibulae of this type appear in Posočje and Friuli, at Bohinj (Sv. Janez, about to be published), and in the Ljubljana basin (Polhov Gradec, Kamin in Ljubljansko Barje, and Tribuna at Ljubljana). They are classified into the Polhov Gradec variant (with two thickenings on an everted foot), and San Floriano (with three thickenings on an everted foot). They are dated into phase Lt D1 (Božič 2011, 254)².

In accordance with a new typology by D. Božič (Božič 2011, 253), this type was separated; prior to this it was considered to be an Idrija variant of the Kastav type, according to the classification by M. Guštin (Guštin 1987, 49).

In this manner fibula T. 3:1 belongs to the Idrija pri Bači type according to Božič. The fibula from Pula is similar to one of the fibulae from grave 5 at Idrija pri Bači (Guštin 1991, T. 6:8). The fibula has a foot wound

² Pojediniosti u vezi nove podjele pojasnio mi je g. Božič na konzultacijama za poslijediplomski studij.

² The details in conjunction with the new division were explained to me by Mr. Božič during post-graduate consultations.

je parom rebara, a spona ima naglašene rubove. Manji gumb je trokutnog, a veći ovalnog presjeka. Obje fibule imaju oprugu s deset navoja, što nije karakteristično. Osim ovog primjera, iz Istre je poznat fragment ovog tipa iz Socerba (Vidulli Torlo 2002, 70, kat. br. 30). Pulski primjer pripadao bi varijanti San Floriano.

9. Tip Picugi, varijanta Picugi

Karakteristike ovog tipa su ovalni luk s koljenastim prelaskom u nogu, a opruga je omotana oko luka s 4–8 namotaja sa svake strane. Kod varijante Picugi izvijeni produžetak noge ukrašen je gumbom sa zadebljanjima sa svake strane ili s tri ili više rebara u nizu. Kraj nožice pričvršćen je za sredinu luka narebrenom sponom (Guštin 1987, 51–52).

Ovaj je tip zastupljen jednim primjerom (T. 3:3).

U Istri su dobro poznate fibule tipa Picugi s nalazišta Nova Vas (Sakara Sučević 2004, 64, 67–68), Picugi (Guštin 1987, Fig. 3,1–4), Rim kod Roča (Guštin, Fig. 4:10), Nezakcij (Mihovilić 1991, fig. 1/20; 2009, fig. 2:9–10, 12–17), Beram (Marchesetti 1883, tav. III/20), Sermin (Guštin 1987, Fig. 2:1, Horvat 1997, T. 1:4,5; 34:1) i Limska gradina (Guštin 1987, Fig. 4,2).

Fibula (T. 3:2) je oštećena u vatri: po koljenastom prijelazu u nogu i oblom presjeku može se općenito smatrati tipom Kastav ili Picugi.

Taj tip je rasprostranjen u kasnolatenskom razdoblju na prostoru između Liburnije i sjeverozapadne Italije. Javlja se u padskom području (Bologna i Forlì) te venetskom i furlanskom, a preko Slovenije se širi dalje u Istru i Hrvatsku do dalmatinske obale. Područje rasprostiranja poklapa se s rasprostiranjem kasnih tipova Certose, pr. tip Xm i tip VII varijante f, g i h prema Teržan, što znači da su se ove fibule u većoj mjeri izrađivale lokalno i nisu povezane s keltskim seobama i doseljavanjem, no ne može se negirati njihova povezanost ili porijeklo iz keltskih modela.

Vremenski pripadaju razdoblju Lt D1 (Guštin 1987, 51–53; 1991, 38).



Sl. 15 Fibule tipa Picugi
Fig. 15 Picugi type fibulae

about the bow from the interior side, the smaller and larger button on the foot are separated by a pair of ribs, the clamp has pronounced edges. The smaller button has a triangular, the bigger one an oval cross-section. Both fibulae have a spring with ten coils, which is not characteristic. Except for this specimen, in Istria there is also a fragment of this type from Socerb (Vidulli Torlo 2002, 70, Cat. No. 30).

The specimen from Pula would fall under the San Floriano variant.



Sl. 14 Fibula tipa Idrija pri Bači

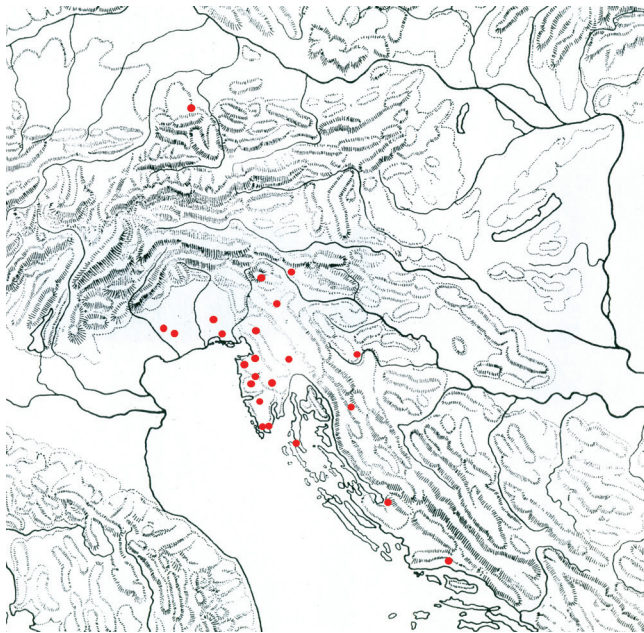
Fig. 14 An Idrija pri Bači type fibula

9. The Picugi variant of the Picugi type

Characteristic for this type are an oval bow with a knee-shaped transition to the foot, the spring is wound about the bow with 4–8 coils on each side. The Picugi variant features an everted extension of the foot which is decorated with a button with thickenings on each side, or, with three or more ribs in a row. The terminal of the foot is fastened to the middle of the bow with a ribbed clamp (Guštin 1987, 51–52).

This type is represented by a single specimen (T. 3:3). Well-known in Istria are fibulae of the Picugi type from sites at Nova Vas (Sakara Sučević 2004, 64, 67–68), Picugi (Guštin 1987, Fig. 3,1–4), Rim near Roč (Guštin, Fig. 4:10), Nesactium (Mihovilić 1991, Fig. 1/20; 2009, Fig. 2:9–10, 12–17), Beram (Marchesetti 1883, Tav. III/20), Sermin (Guštin 1987, Fig. 2:1, Horvat 1997, T. 1:4,5; 34:1), and Limska Gradina (Guštin 1987, Fig. 4,2). Fibula (T. 3:2) was damaged due to fire: according to the knee-shaped transition to the foot and the circular cross-section it is generally assumed that it is of the Kastav or Picugi type.

In the Late La Tène period this type was spread in the region between Liburnia and northwestern Italy. These fibulae appear in the Po River area (Bologna and Forlì), as well as in the Venetic region and Friuli. Across Slovenia they spread to Istria and Croatia up to the Dalmatian coast. The area of dissemination coincides with that of



Sl. 16 Karta rasprostranjenosti fibula tipa i varijante Picugi (po Guštin 1987, 52, 12.)

Fig. 16 A chart showing the dissemination of the Picugi variant of the Picugi type fibula (after Guštin 1987, 52, 12)

nalazišta / sites:

- Les Pennes, Aquileia, Museo Pieve di Cadore, S. Floriano di Polcenigo, Pozzuolo del Friuli, Idrija pri Bači, Reka, Kovačevše, Sv. Katarina, Reichenhall bei Karlstein, Kralj, Metlika, Socerb, Sermin, Rim kod Roča, Nova Vas, Limska gradina, Picugi, Pula, Osor, Nadin, Solin, Prozor, Nezakcij

10. Tip Almgren 65

Fibula “*ad arpa*” ili Almgren 65 ima povećanu i zadebljanu glavu oblika trube s okruglim i profiliranim rubom, okvirastu nogu i tri poprečna rebra na luku, na mjestu gdje bi se nožica spajala s lukom. Opruga je manjih dimenzija, najčešće ima šest navoja i omotana je s vanjske strane (Buora, Candussio, Demetz 1990, 86; Lokošek 1990, 98). Rasprostranjene su gotovo po cijeloj Europi, s najvećom koncentracijom u sjevernoj Italiji, predalpskom i alpskom području do Dunava. Najviše ih se nalazi u padsko-sjevernojadranskom prostoru.

Demetz je ovaj tip podijelio u četiri varijante: var. a, s jednostavnim ukrasnim elementom na luku, var. b, sa zaobljenim ukrasnim elementom na luku, var. c, s dvostrukim ukrasnim elementom i var. d - bez ukrasnog elementa. Ove varijante dalje se dijele na podgrupe s obzirom na veličinu i detalje kod ukrašavanja (Demetz 1999, str. 29 - 30).

Fibula ovog tipa zastupljena je fragmentom T. 4:3. Određena je kao ovaj tip zbog zadebljanja na kraju luka ukrašenog poprečnim urezom.

Osim u Kašteliru kod Nove Vasi (Mihovilić 1991, fig.1/29, Guštin 1987, fig. 3:21) i Picugima, ovaj tip

the late types of Certosa, e.g., type Xm, and type VII, variants f, g and h, according to Teržan, which means that these fibulae were for the most part manufactured locally and are not connected with the migration of the Celts, and with immigration; however, it is not possible to negate their links with or their provenance from Celtic models.

They belong to the Lt D1 period (Guštin 1987, 51-53; 1991, 38).

10. Almgren 65 type

The “*ad arpa*” or Almgren 65 fibula has an enlarged and thickened head that is trumpet-shaped, with a round, molded edge, an open foot, and three transverse ribs on the bow, on the spot where the foot would be joined to the bow. The spring is of lesser dimensions and has for the most part six coils wound on the exterior side (Buora, Candussio, Demetz 1990, 86; Lokošek 1990, 98). They were spread almost everywhere in Europe, the greatest concentration being in Northern Italy, the Alpine and Pre-Alpine region up to the Danube. Most of them are from the Po River - Northern Adriatic region.

Demetz divided this type into four variants: variant a with a simple decorative element on the bow, variant b with a rounded decorative element on the bow, variant c with a double decorative element, and variant d without a decorative element. These variants are further divided into subgroups based on the size and details of the decoration (Demetz 1999, pp. 29-30).

A fibula of this type is represented with fragment T. 4:3. It was classified into this type on the basis of a thickening at the terminal of the bow, which is decorated with a transverse incision.

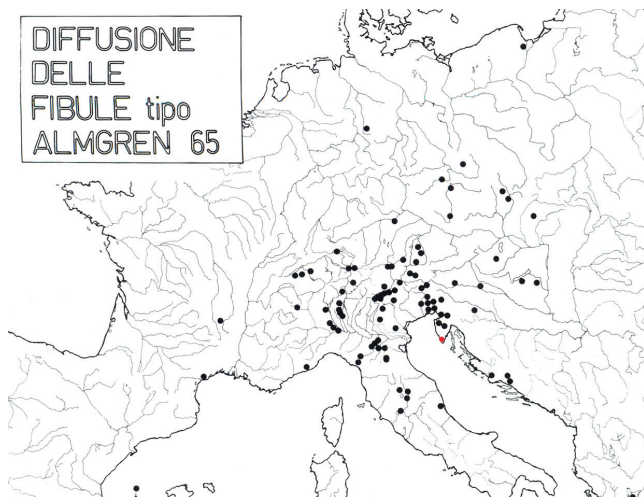
Except at Kaštelir near Nova Vas (Mihovilić 1991, Fig.1/29, Guštin 1987, Fig. 3:21) and Picugi, this type of fibula was also discovered at Socerb, Osor, Idrija pri Bači, Vičava near Ptuj and Vir (Guštin 1987, 54).



Sl. 17 Fibula tipa Almgren 65

Fig. 17 An Almgren 65 type fibula

fibula pronađen je u Socerbu, Osoru, Idriji pri Bači, Vičavi kod Ptuja i Viru (Guštin 1987, 54).



Sl. 18 Karta rasprostranjenosti fibula tipa Almgren 65 (po Boura, Candussio, Demetz 1990, Fig. 1)

Fig. 18 A chart showing the dissemination of Almgren 65 type fibulae (after Boura, Candussio, Demetz 1990, Fig. 1)

11. Tip Nova Vas

Fibula tipa Nova Vas ima oprugu s četiri namotaja, od kojih je jedan omotan oko luka, te visoki i jaki luk s tri poprečna rebra na najvišem dijelu. Luk je zadebljan od rebara prema opruzi, kao i s unutrašnje prema vanjskoj strani. Ima šuplju okvirastu nogu oblika trapeza s malo zakrivljenim hrptom. Po veličini ovaj se tip dijeli u dvije skupine: velike i male (Božič 2008, 46, 187, karta 1). Češće su male, dugačke od 4,6 do 5,3 cm (Božič 2008, Fig. 38–39). U rjeđoj grupi s većim primjerima fibule su duge od 7 do 8 cm (Božič 2008, Fig. 37). Veliki primjeri imaju iste morfološke osobine kao i manji, samo im je noga s hrptom trokutastog oblika, dok je kod manjih trapezasta.

Fibule ovog tipa s nalazišta su T. 4:4 (grupa manjih fibula) i 5 (grupa većih fibula). Veća fibula ima izrastak na kraju okviraste noge sličan onoj iz Ogorja, dok sličnu udubljenu unutrašnju stranicu okvira ima fibula iz Olimpije (Božič 2008, 73, sl. 37:5, 7).

Oko polovice poznatih primjera tipa Nova Vas pronađeno je u svetištima, odnosno na mjestima gdje su se prinosele paljevinske žrtve. Tako ih je 15 poznato iz svetišta Este Baratella, dvije iz svetišta na brdu Gradič u Kobaridu, jedna iz svetišta Rocca S. Felice u Valle d'Ansanto u južnoj Italiji i tri iz žrtveno-paljevinskog mjesta Mechel-Valemporga kod Clesa u okolici Trente (Božič 2008, 78.) U Istri su dva primjerka pronađena u sloju naselja u Kašteliru kod Nove Vasi (Guštin 1987, 54, Fig. 3:12).

11. Nova Vas type

The Nova Vas type fibula has part of the spring wound about the bow, a spring with four coils, and a high, strong bow with three transverse ribs on the highest portion of the bow. The bow thickens from the ribs towards the spring, as well as from the interior towards the outer side. It has a hollow open foot shaped like a trapezium, with a slightly bent back. Depending on size we divide this type into two groups: big fibulae and small ones (Božič 2008, 46, 187, Chart 1). Small fibulae that are from 4.6 to 5.3 cm long occur more frequently (Božič 2008, Fig. 38–39). The rarer group that features bigger specimens includes fibulae that are from 7 to 8 cm long (Božič 2008, Fig. 37). The bigger specimens have the same morphological characteristics as the smaller ones, the only difference being that their foot and back are triangular in shape, whereas with the smaller ones it is trapezium-shaped. Fibulae of this type, which were discovered on site are T. 4:4 (a group of smaller fibulae) and 5 (a group of bigger fibulae). The larger fibula has a protuberance at the terminal of the open foot, which is similar to the fibula from Ogorje, while a similar recessed interior side of the frame can be seen on the fibula from Olympia (Božič 2008, 73, Fig. 37:5, 7).

Approximately half of the known specimens of the Nova Vas type were discovered in sanctuaries, and in areas where cremation offerings were placed. In this manner 15 of them are known from the sanctuary Este Baratella, two from the sanctuary on Gradič Hill at Kobarid, a single one from the sanctuary Rocca S. Felice in Valle d'Ansanto in southern Italy, and three from the Mechel-Valemporga cremation offering site near Cles in the surroundings of Trento (Božič 2008, 78).

In Istria, two such specimens were unearthed in a layer of the settlement at Kaštelir near Nova Vas (Guštin 1987, 54, Fig. 3:12).

These fibulae were made in the region of northeastern Italy, most probably in the town of Aquileia (Božič 2008, 79).

12. Nauheim II.2

Within the framework of an analysis of fibulae from the region between the Alps, the Po River valley and Danube, Demetz divided the Nauheim type into two groups: the Nauheim I group with an open foot, and the Nauheim II group with a solid, square foot, either with or without a small perforation. The Nauheim II form was further subdivided into form II.1 (Božič variant A) that has a strap bow with punched dots alongside the edge, II.2 (Božič variant B) that has a smooth gable-roof-shaped bow with a triangular cross-section, and the II.3

Ove su fibule proizvedene na prostoru sjeveroistočne Italije, najvjerojatnije u gradu Akvileji (Božič 2008, 79).

12. Nauheim II. 2

Demetz je u sklopu analize fibula s područja između Alpa, doline rijeke Po i Dunava tip Nauheim podijelio u dvije grupe: grupu Nauheim I s okvirastom nogom i grupu Nauheim II s punom četvrtastom nogom, s rupicom ili bez nje. Oblik Nauheim II podijelio je na oblik II.1 (Božič varijanta A), koji ima trakasti luk s punciranim točkicama uz rub, II.2 (Božič, varijanta B), s glatkim strešastim lukom trokutastog presjeka, i II. 3 varijantu s glavom neznatno konkavnog presjeka (Božič 2008, 60; Demetz 1999, 78-90).



Sl. 19 Fibula tipa Nova Vas
Fig. 19 A Nova Vas type fibula



Sl. 20 Karta rasprostranjenosti fibula tipa Nova Vas (po Božič 2008, 187, karta 1., nadopunjeno po Sagadin 2010, 19, t. 1:7.)

Fig. 20 A chart showing the dissemination of Nova Vas type fibulae (after Božič 2008, 187, Chart 1; supplemented after Sagadin 2010, 19, T. 1:7) nalazišta / sites:

- Valle d'Ansanto - Rocca S. Felice, Stöffling - Gerstenpoint, Trenčianske Bohuslavice-Malovecké, Mechel-Valemporga, Virgen-Obermauern, Magdalensberg/ Štalenska gora, Este- Baratella, Iutizzo, Pozzuolo del Friuli, Teor-Pirin, Jalmicco-Babanic, Kobarid-Gradič, Most na Soči, Višnja Gora-Stari grad, Podturn-Šumenje, Šmarjeta, Novo mesto-Beletov vrt, Nova Vas - Kaštelir, Podgrađe Asseria, Kranj-severno dvorišče Kieselsteina, Pula

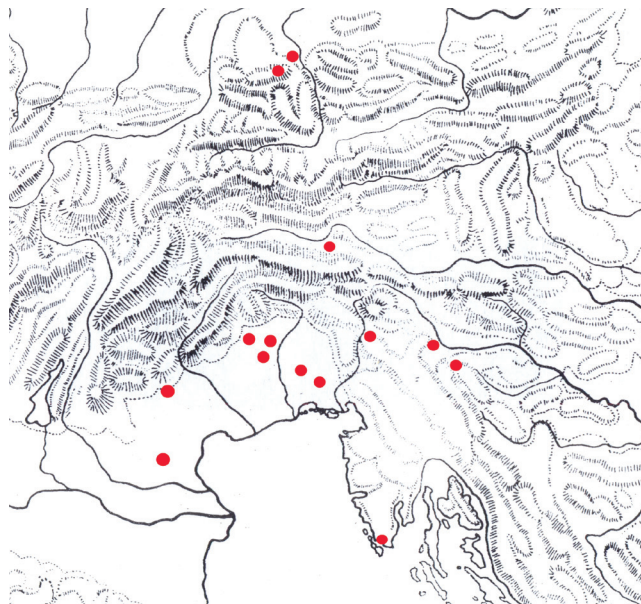
variant featuring a head with a slightly concave cross-section (Božič 2008, 60; Demetz 1999, 78-90).

Fibulae of the Nauheim II type are limited to the area of the southern and southeastern Alps, where fibulae of the Nauheim I type do not appear as a rule. Demetz designated the Veneto region as the autochthonous area for this type of fibula, from where it spread. Božič places the source of these fibulae in Veneto and Friuli (Božič 1993, 143). He considers variant B as stemming from Friuli.

The specimens from Pula (T. 4:1,2) would belong to variant Nauheim II.2. The first specimen lacks the foot and most of the spring, and features a protuberance at the top of a solid square foot with a perforation. Such



Sl. 21 Fibula tipa Nauheim II. 2
Fig. 21 A Nauheim II.2 type fibula



Sl. 22 Karta rasprostranjenosti fibula vrste Nauheim II. 2 (po Demetz 1994, 245, karta 25; nadopunjeno po Cunja, Mlinar ur., 2010, 113, kat. št. 117)

Fig. 22 A chart showing the dissemination of the Nauheim II.2 type fibulae (after Demetz 1994, 245, Chart 25; supplemented after Cunja, Mlinar editor, 2010, 113, Cat. No. 117)

nalazišta / sites:
- Arqua Petrarca, Asolo, Joannis, Maniago-Molinat, Polcenigo-San Floriano, Pozzuolo del Friuli, Vivaro-Tesis, Gurina bei Dellach, Hellbrunn Salzburg, Ljubljana, Stična-Vir, Most na Soči, Pula, Karlstein bei Bad Reichenhall

Fibule Nauheim II ograničene su na prostor južnih i jugoistočnih Alpa, gdje se one oblika Nauheim I u pravilu ne pojavljuju. Demetz je područje Veneta označio kao izvorni prostor iz kojeg se širio ovaj tip. Božič izvorište ovog tipa smješta u Veneto i Furlaniju (Božič 1993, 143). Za varijantu B smatra da je porijeklom iz Furlanije.

Primjeri iz Pule (T. 4:1,2) pripadali bi varijanti Nauheim II. 2. Prvom primjeru nedostaje noga i veći dio opruge te ima izrastak na vrhu pune četvrtaste noge s rupicom. Takav izrastak imaju primjeri s nalazišta Joánnis kod Udina (Buora, Seidel 2008, 88 i 90, br. kat. 55), Hellbrunn, Salzburg, rimska zgrada (Demetz 1999, t. 23:6) i Este - Meggiaro, svetište (Salerno 2002, 160, br. kat. 54, fig. 64:54).

Od drugog primjera očuvan je luk s oprugom od 2 namotaja.

Osim fibula iz Pule, Nauheim fibule pronađene su u Novoj Vasi (Nauheim II.1a.)

13. Fibula tipa *Schüssel*

Fibula tipa *Schüssel* ima okvirastu nogu, a luk je polukružno proširen iznad opruge i služi kao njen štit ili pojačanje. Ovaj je tip dobio naziv upravo zbog karakterističnog oblika kraja luka, koji nalikuje zdjeli (T. 5:2).

Primjerak je savijen, ima okvirastu nogu trokutastog oblika, glavu oblika zdjele i oprugu s 4 namotaja.

Demetz je podijelio ovaj tip na više formi: to su forma I s glatkim lukom, forma Ia1 s uskim presjekom luka, i forma Ia2 s trakastim lukom (Demetz 1999, 65-67). Pulski primjer pripadao bi formi Ia2.

Fibule tipa *Schüssel* se osim u Transpadaniji, okolici Akvileje i području sjeverno od Alpa nigdje ne pojavljuju u velikom broju. Izvan ravnice Po nalazi se na udaljenim lokalitetima Karlstein, Bad Reichenhall, Hradište kod Stradonica i Alesia (Demetz 1999, 69). Ovo su bile stanice koje su u kasnije Cezarovo vrijeme bile naseljene.

Područje koje pokriva fibula tipa *Schüssel* pokazuje slično širenje kao i Almgren 65, s kojima se uspoređuje i po koncentraciji. Tip je malobrojniji od tipa Almgren 65, no bio je univerzalno popularan u cijelom kasnokeltskom svijetu, od Galije na zapadu do istočnih oppida. Fibule tipa *Schüssel* vjerojatno su porijeklom iz gornje Italije i u velikom su broju imitirane od željeza i kao lokalne varijante. U istočnoj Padaniji i području Veneta kao i u susjednim istočnim alpskim područjima Raetie i

protuberations were also observed on specimens from the Joánnis site near Udine (Buora, Seidel 2008, 88 and 90, Cat. No. 55), Hellbrunn, Salzburg, Roman structure (Demetz 1999, T. 23:6), and Este - Meggiaro, the sanctuary (Salerno 2002, 160, Cat. No. 54, Fig. 64:54).

A bow with a spring consisting of two coils was preserved from the second specimen.

Except from these fibulae from Pula, fibulae of the Nauheim type were also discovered at Nova Vas (Nauheim II.1a).

13. *Schüsselfibel* type

Fibulae of the *Schüssel* type have an open foot, and their bow above the spring widens in a semi-circular manner, serving thus as a shield or to strengthen them. This type was named precisely on account of the characteristic form of the bow terminal that resembles a bowl (T. 5:2). The specimen is bent, it features an open, triangular foot, a bowl-shaped head, and a spring with 4 coils.

Demetz subdivided this type into several forms: form I with a smooth bow, form Ia1 with a narrow cross-section of the bow, and form Ia2 with a strap bow (Demetz 1999, 65-67). The specimen from Pula belongs to form Ia2.

Nowhere else except in Transpadania, the surroundings of Aquileia, and in the region to the north of the Alps, do fibulae of the *Schüssel* type appear in large numbers. Outside of the Po plain it can be found on faraway sites such as Karlstein, Bad Reichenhall, Hradište near Stradonica and Alesia (Demetz 1999, 69). These were outposts that were settled at a later stage, during Caesar's period.

The area covered by *Schüsselfibel* shows similar dissemination patterns as was the case with Almgren 65, and the same is true for their concentration. This type does not appear in such large numbers as Almgren 65, but it was nonetheless universally popular during the entire Late Celtic period, from Gaul in the west, to eastern oppida. *Schüsselfibel* probably stem from upper Italy, and they were imitated en masse in iron as local variants. They were of lesser importance in eastern Padania and in the region of Veneto, as well as in the neighboring eastern Alpine regions of Rhaetia and Norricum. In upper Italy, fibulae of the *Schüssel* Ia type appear somewhat later in comparison with the Almgren 65 type, but by all means before the middle of the 1st century BC, i.e., in phase Lt It D2 (after Tizzoni/De Marinis). Late types, such as Ib2, already show the formal characteristics of the period of Augustus.

Noricuma bile su od manje važnosti.

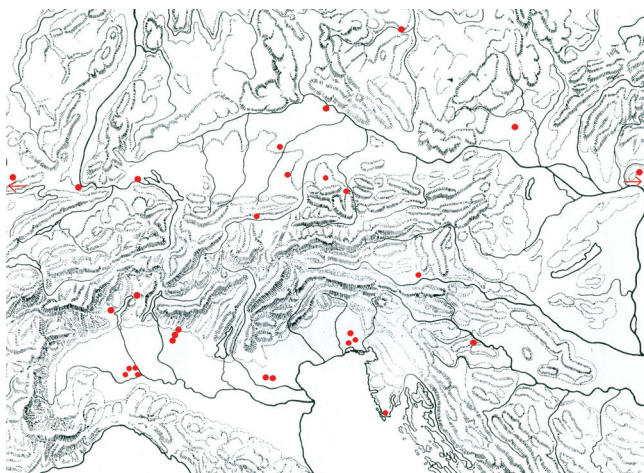
U gornjoj Italiji fibule tipa *Schüssel* Ia pojavljuju se nešto kasnije od Almgren 65, no svakako prije sredine 1. st. pr. Kr., dakle u fazi Lt It D2 (po Tizzoni/De Marinis). Kasni tipovi, kao Ib2, već pokazuju formalne karakteristike Augustovog doba.

14. Tip a *staffa chiusa*

Ova fibula (T. 5:1) ima trokutasto proširen gornji dio luka, dva manja rebra uz rub i jedno istaknuto na sredini. Na sredini luka pričvršćena je spona koja je poprečno obrubljena rebrima. Noga ima trapezasto pločasto proširenje za prihvat igle i izrastak. Opruga je omotana oko luka i ima četiri navoja.



Sl. 23 Fibula tipa Schüssel forme Ia2
Fig. 23 A Schüsselfibel, form Ia2



Sl. 24 Karta rasprostranjenosti fibule tipa Schüssel forme Ia2 (po Demetz 1999, karta 16, 236, liste IX 1.2)

Fig. 24 A chart showing the dissemination of Schüsselfibel, form Ia2 (after Demetz 1999, Chart 16, 236, List IX 1.2)

nalazišta / sites:

- Alise-Sainte-Reine, Basel-Münsterhügel, Giubiasco, Bergamo, Este-Baratella, Este-Casale, Gambolò-Belcreda, Garlasco, Porpetto, Strassoldo, Treviglio, Valeggio, Verdello, Mihovo, Magdalensberg, Oberleiserberg bei Ernstbrunn, Pfaffenhofen, Hradišće bei Stradonice, Zemplín, Altenburg, Eching, Fentbachschanze?, Karlsten bei Reichenhall, Stöffling, Straubing, Pula

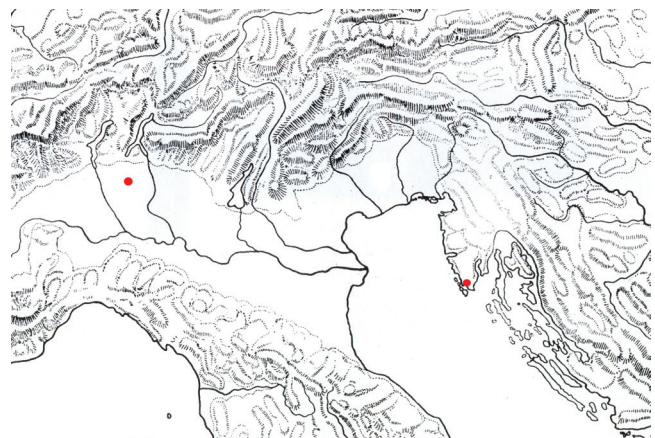
14. A *staffa chiusa* type

This fibula (T. 5:1) has a triangularly widened upper bow section, two smaller ribs alongside the edge, as well as a pronounced one in the middle. Fastened in the middle of the bow is a clamp that is transversely bound with ribs. The foot has a trapezium-shaped slablike widening to accommodate the pin, and a protuberance. The spring is wound about the bow and has four coils.

The only analogy for this type was discovered at Milan during rescue archaeological excavations in conjunction with construction works for the subway (Bolla 1991, Tav. CLXX:23), where on the basis of the stratigraphic unit it was generally dated into the period from the 1st century BC to the 1st century AD. With regard to the context of the find (S.U. 15-08 is the base for a drainage layer of amphorae) on this site, it cannot be regarded as earlier than the third quarter of the 1st century BC. On the table showing the periodization of the Late La Tène period (Agostinetti, Knobloch 2010, Fig. 12), the horizon of fibulae *a staffa chiusa* o *perforata* is dated into the period of the triumvirate.



Sl. 25 Fibula tipa a *staffa chiusa*
Fig. 25 An a *staffa chiusa* type fibula



Sl. 26 Karta rasprostranjenosti fibule tipa a *staffa chiusa*, nalazišta - Milano, Pula

Fig. 26 A chart showing the dissemination of a *staffa chiusa* fibulae, sites - Milano, Pula

Jedina analogija ovom tipu pronađena je u Milanu kod zaštitnih iskopavanja za podzemnu željeznicu (Bolla 1991, Tav. CLXX:23), gdje je po stratigrafskoj jedinici okvirno datirana u period od 1. st. pr. Kr. do 1. st. pos. Kr. S obzirom na kontekst nalaza (S.J. 15-08 je podloga drenažnom sloju amfora) na ovom nalazištu, ne može se smatrati mladom od treće četvrtine 1. st. pr. Kr. Na tablici koja prikazuje periodizaciju kasnolatenskog razdoblja (Agostinetti, Knobloch 2010, Fig. 12) horizont fibula *a staffa chiusa o perforata* datiran je u doba trijumvirata.

Osim fibula tipa Certosa VIII f i Kastav, varijanta Nezakcij, ostali su tipovi prvi put pronađeni u Puli. Neki su od ranije poznati iz Nezakcija, sjedišta Histra koje je od Pule udaljeno 11 km (to su *sanguisuga*, zmijolike fibule, fibula ranolatenske sheme, tip Certosa VIII f, Kastav, varijanta Nezakcij, Picugi). Tako se fibule iz vremena početka kasnolatenske faze (Almgren 65, Nova Vas) prvi put javljaju u južnoj Istri, a poznate su iz histarskih naselja u sjevernoj i srednjoj Istri (Nova Vas, Picugi, Socerb). Varijanta Kastav, tipa Kastav prvi je primjer te varijante iz Istre. Fibula Nauheim II.2, rana fibula tipa *Schüsselfibel* i fibula *a staffa chiusa* prvi su primjer tog tipa na istočnoj jadranskoj obali.

Except for fibulae of the Certosa VIII f type, and the Nesactium variant of the Kastav type, the remaining types were discovered at Pula for the first time. Some of these types were already known from Nesactium, the capital of the Histri, which is located 11 km from Pula (these include the: *sanguisuga* type, serpentine fibulae, a fibula of the Early La Tène scheme, the Certosa VIII f type, the Nesactium variant of the Kastav type, and Picugi). Thus we have fibulae from the beginning of the Late La Tène phase (Almgren 65, Nova Vas), which appear in southern Istria for the first time, although they were known from Histrian settlements in northern and central Istria (Nova Vas, Picugi, Socerb). The Kastav variant of the Kastav type represents the first specimen of this kind to come from Istria. A Nauheim II.2 fibula, an early *Schüsselfibel*, and an *a staffa chiusa* fibula, represent the first specimen of the respective types on the eastern Adriatic coast.

Sonda 3 - Kvadrant 1 / Probe 3 - Quadrant 1

stratigrafska jedinica / Stratigraphic unit	tipovi / Types	datacija / Dating		
1-08	Picugi, varijanta Picugi / Picugi variant of the Picugi type	Lt D1	Istra / Istria VI b	kraj 2. - pol. 1. st. pr. Kr. / End of 2 nd - middle of 1 st century BC
2-08	fibula mladeg željeznog doba / Late Iron Age fibula	Lt	Istra / Istria VI	5. - 1. st. pr. Kr. / 5 th - 1 st century BC
7-08	Certosa VIII f	Lt B2- C2	Istra / Istria VI	3. i 2. st. pr. Kr. / 3 rd and 2 nd century BC
15-08	Picugi / Picugi type	Lt D1	Istra / Istria VI b	kraj 2. - pol. 1. st. pr. Kr. / End of 2 nd - middle of 1 st century BC
	Nauheim II.2	Lt D1b	Istra / Istria VI b	100. - 70. pr. Kr. / 100 - 70 BC
	<i>a staffa chiusa</i> / <i>A staffa chiusa</i> type	Lt D1	Istra / Istria VI b	prva pol. 1. st. pr. Kr. / First half of 1 st century BC
26-09	zmijolika trakasta fibula / Serpentine strap fibula	Ha D	Istra / Istria IV	6. st. pr. Kr. / 6 th century BC
	ranolatenska fibula s lukom oblika lovorovog lista / Early La Tène fibula with a laurel-leaf-shaped bow	Lt B-C	Istra / Istria VI a	4. i 3. st. pr. Kr. / 4 th and 3 rd century BC
	Certosa VIII f	Lt B2-C2	Istra / Istria VI	3. i 2. st. pr. Kr. / 3 rd and 2 nd century BC
	Kastav varijanta Nezakcij / Nesactium variant of the Kastav type	Lt B2-C2	Istra / Istria VI	3. i 2. st. pr. Kr. / 3 rd and 2 nd century BC
	Kastav varijanta Kastav / Kastav variant of the Kastav type	Lt B2-C2	Istra / Istria VI	3. i 2. st. pr. Kr. / 3 rd and 2 nd century BC
	fibula srednjolatenske sheme / Fibula of the Middle La Tène scheme	Lt D1	Istra / Istria VI b	kraj 2. - pol. 1. st. pr. Kr. / End of 2 nd - middle of 1 st century BC
	fibula željeznog doba / Iron Age fibula			

Sonda 2 - Kvadrant 1 / Probe 2 - Quadrant 1

stratigrafska jedinica / Stratigraphic unit	tipovi / Types	datacija / Dating		
8-08	<i>sanguisuga</i> / <i>sanguisuga</i>	kraj Ha C2, D1 / End of Ha C2, D1	Istra / Istria III/IV	kraj 7. i 6. st. pr. Kr. / End of 7 th and 6 th century BC

Prostorija 33 - Objekt 4 / Room 33 - Object 4

stratigrafska jedinica / Stratigraphic unit	tipovi / Types	datacija / Dating		
32 P33-O4	Kastav varijanta Nezakcij / Nesactium variant of the Kastav type	Lt B2-D1	Istra / Istria VI	3 i 2. st. pr. Kr. / 3 rd and 2 nd century BC
62-07 (sonda A) / 62-07 (probe A)	zmijolika trakasta fibula / Serpentine strap fibula	Ha D	Istra / Istria IV	6. st. pr. Kr. / 6 th c. BC
	zmijolika fibula s krilcima / Serpentine fibula with wings	Ha D	Istra / Istria IV	6. st. pr. Kr. / 6 th c. BC

Prostorija 31 - Objekt 4 / Room 31 - Object 4

stratigrafska jedinica / Stratigraphic unit	tipovi / Types	datacija / Dating		
32 P31-O4	<i>Schüssel</i> fibula Ia2 / <i>Schüsselfibel</i> Ia2	LtD1b	Istra / Istria VI b	100. - 70. pr. Kr. / 100 - 70 BC
67-07 (sonda M) / 67-07 (probe M)	Idrija pri Bači / Idrija pri Bači	Lt D1	Istra / Istria VI b	kraj 2 - pol. 1. st. pr. Kr. / End of 2 nd - middle of 1 st c. BC
	fibula srednjolatenske sheme / Fibula of the Middle La Tène scheme	kraj Lt C2-D1	Istra / Istria VI b	kraj 2. - pol. 1. st. pr. Kr. / End of 2 nd - middle of 1 st c. BC
	Nauheim II.2	Lt D1b	Istra / Istria VI b	100. - 70. pr. Kr. / 100 - 70 BC
	Nova Vas	Lt D1b	Istra / Istria VI b	100. - 70. pr. Kr. / 100 - 70 BC
	Almgren 65	Lt D1b	Istra / Istria VI b	100. - 70. pr. Kr. / 100 - 70 BC



Sl. 27 Fragmentirane fibule
Fig. 27 Fragmented fibulae

Usporedba rezultata A. Starac s datacijama fibula i komentarom

Najstarije fibule iz 6. st. pr. Kr., koje su vremenski istodobne najstarijim strukturama u sondi 3, mogu biti i tragovi nekropole, koja se uobičajeno u histarskoj kulturi preklapala sa živućim prostorom, što je zamijećeno prilikom istraživanja gradina Pula, Nezakcij i Sv. Martin iznad Lima (Mihovilić 2011, 34).

Tako bi kup s nagorjelim brončanim predmetima iz kojeg su izdvojene dvije zmijolike fibule u sondi A (P33-O4) mogao upućivati na položaj ustrinuma.

Isto je tako zamijećeno da su kasnolatske fibule u sondi M (P31-O4) pronađene zajedno na kupu, a sve datiraju u prvu trećinu 1. st. pr. Kr.

Ovakav nalaz može se smatrati zavjetnim darom, što upućuje na to da se prostor oko izvora vode štovao kao svetište i prije izgradnje Herkulova hrama.

Velik broj fibula pronađenih uz izvor pitke vode, naročito iz faze kasnog željeznog doba, može biti žrtveni dar u vezi s histarskim svetištem koje je postojalo oko izvora prije izgradnje Herkulovog hrama. Poznato je prapovijesno svetište božice Reitia u Este Baratella, na kojem je otkriveno 14.000 predmeta, uglavnom

A comparison of the results of Alka Starac with fibulae datings and a commentary

The oldest fibulae from the 6th century, which are concurrent to the oldest structures in probe 3, could likewise be traces of a necropolis, as in Histrian culture the latter commonly overlapped the living area, which was observed during the excavation of the hillforts at Pula, Nesactium and Sv. Martin above Lim (Mihovilić 2011, 34).

Hence it is feasible that the heap containing burned bronze objects, from where two serpentine fibulae were singled out in probe A (P33-O4), could indicate the position of an ustrinum. It was also observed that all Late La Tène fibulae in probe M (P31-O4) were discovered together in a heap, and that they all date into the first third of the 1st century BC.

Such a find can be regarded as a votive gift, which indicates that the area surrounding the freshwater spring was used as a sanctuary even before the erection of Hercules' temple.

A large number of fibulae discovered alongside the freshwater spring, especially from the Late Iron Age phase, could represent sacrificial offerings connected to the Histrian sanctuary that existed around the freshwater spring before the erection of the temple of Hercules. The prehistoric sanctuary dedicated to the goddess Reitia is known from Este Baratella, where 14,000 objects were discovered, most of them made of bronze, amongst which are 756 fibulae (Meller 2002, 22).

The finds from this sanctuary are dated into the period from the 7th century BC to the 2nd century AD. The votive bestowal of fibulae dates from the beginning of the La Tène phase to the end of the 1st century BC, when bestowal of fibulae was exchanged with the placing of coins. The worship of the goddess Reitia is linked with the health cult, which is corroborated by hot water springs in the vicinity of the site.

The Este Baratella sanctuary is located to the southeast from the settlement, along the Adige River, probably on a spot where land routes and traffic on the river bifurcate. The cult had grown more complex in nature from the 5th to the 3rd century BC., with the bestowal of a large number of pottery vessels and votive objects made of bronze. Except for libations and gifts, the ritual also consisted of animal offerings, food consumption and the lighting of fire. Except for this most famous prehistoric sanctuary, in the region of Veneto there are also: Meggiaro, Caldevigo, Casale and Morlungo (Perego 2011, 15).

brončanih, među kojima 756 fibula (Meller 2002, 22). Nalazi sa svetišta datiraju od 7. st. pr. Kr. do 2. st. pos. Kr. Zavjetno darovanje fibula datira od početka faze La Tène do kraja 1. st. pr. Kr., kada je zamijenjeno polaganjem novčića. Obožavanje božice Reitie povezano je s kultom zdravlja, što potvrđuju i izvori tople vode u blizini nalazišta.

Svetište Este Baratella nalazi se jugoistočno od naselja, uz rijeku Adige, na mjestu gdje se vjerojatno račvaju kopneni putovi i gdje je gust riječni promet. Od 5. do 3. st. pr. Kr. kult je postao kompleksniji, uz ponudu velikog broja keramičkih posuda i brončanih votivnih predmeta. Osim libacija i ponuda, ritual je uključivao žrtvovanje životinja, konzumaciju hrane i paljenje vatre. Osim ovog najpoznatijeg, prapovijesna svetišta na području Veneta su Meggiaro, Caldevigo, Casale i Morlungo (Perego 2011, 15).

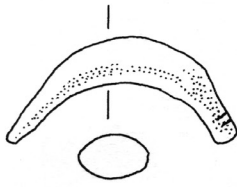
Iako se svetište u Puli ne može uspoređivati sa svetištem u Este Baratella po obimu nalaza, zajednički su im elementi da se nalaze na graničnom području koje je odvajalo zonu u kojoj žive ljudi od vanjskog teritorija, što je obilježje venetskih svetišta (Perego 2011, 14). Oba svetišta nalaze se uz izvor pitke vode te su pronađeni predmeti (fibule, keramika) i ostaci konzumacije hrane povezani s prakticiranjem obrednih rituala.³

Although there is no way to compare the sanctuary at Pula with the sanctuary at Este Baratella regarding the sheer volume of finds, they nevertheless have some common elements: both are situated in a border region that divided the zone inhabited by people from the outer territories, which is a hallmark of Venetic sanctuaries (Perego 2011, 14). Furthermore, both sanctuaries are located alongside a freshwater spring, and the unearthed objects (fibulae, pottery) as well as remnants of food consumption were both tied to the practice of staging ritual ceremonies.³

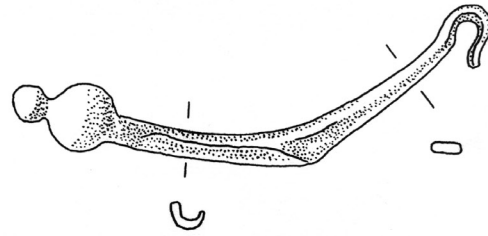
³ Zahvaljujem Draganu Božiću na uloženom strpljenju i pomoći kod sastavljanja članka, restauratorici Đeni Gobić-Bravar na spajanju i obradi predmeta te Goranu Čvrljku na izradi crteža.

³ I would like to thank Dragan Božić for their endless patience and help in conjunction with this article, the restorer Đeni Gobić-Bravar for the work she has performed restoring these objects, and also Goran Čvrljak for the help with the drawings.

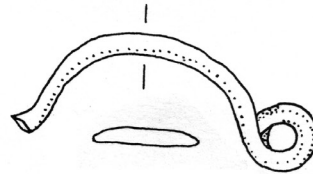
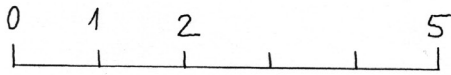
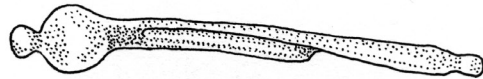
T.I.



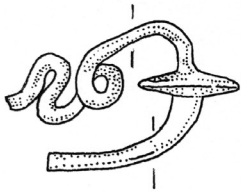
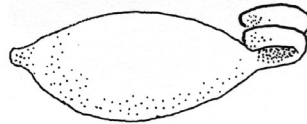
1



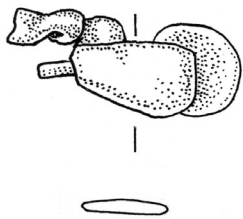
2



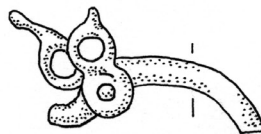
3



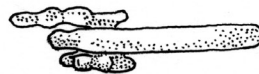
4



4



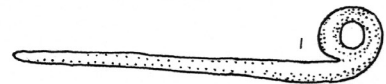
5



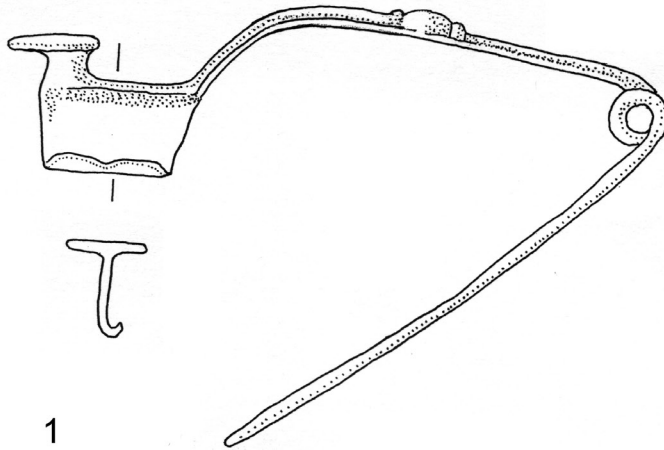
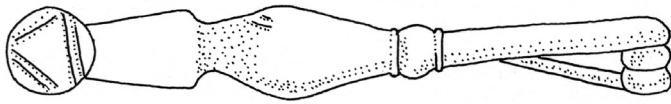
5



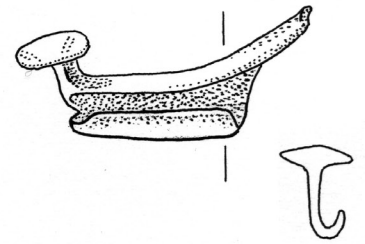
6



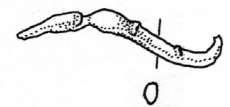
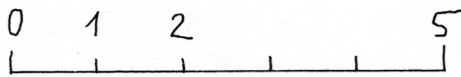
T. II.



1



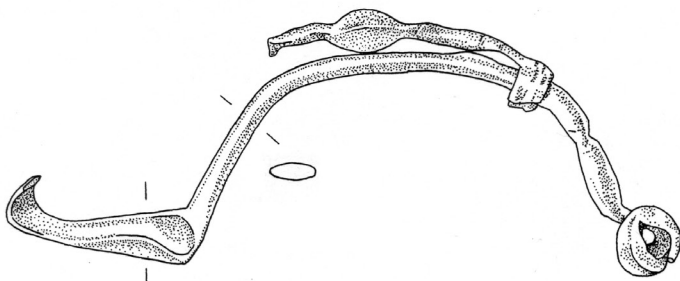
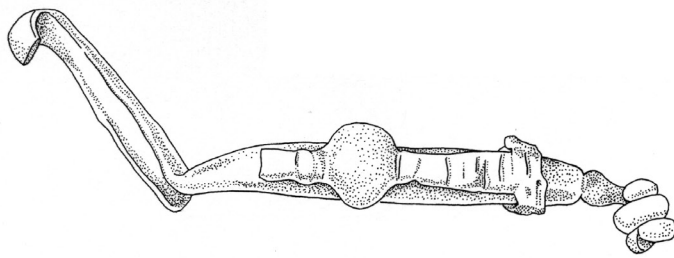
2



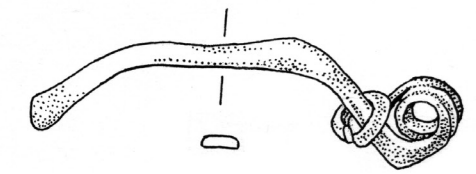
0



3

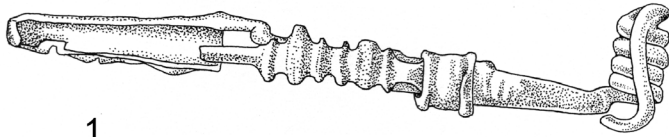
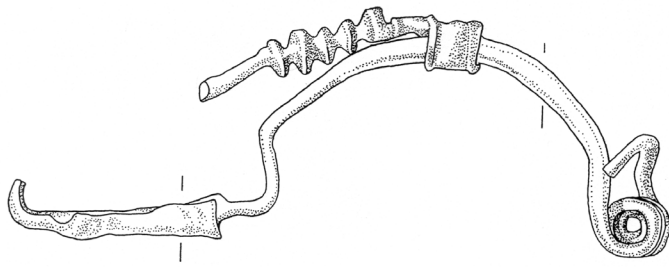


4

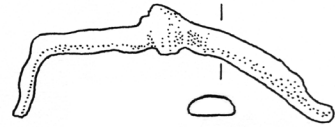


5

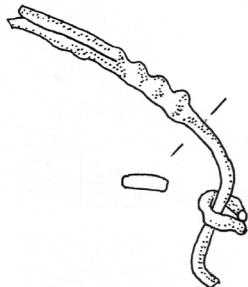
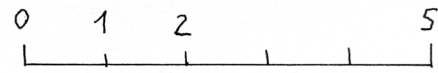
T. III.



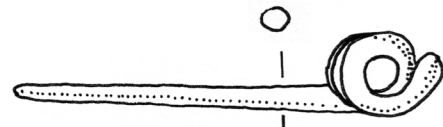
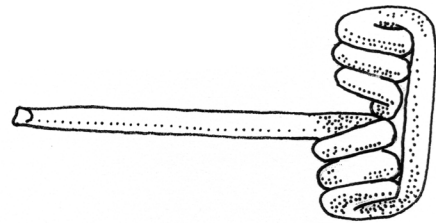
1



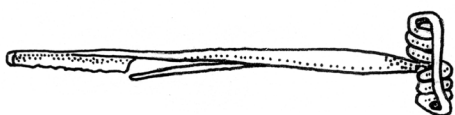
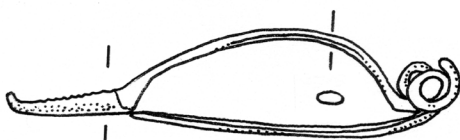
2



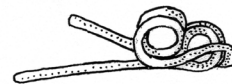
3



4

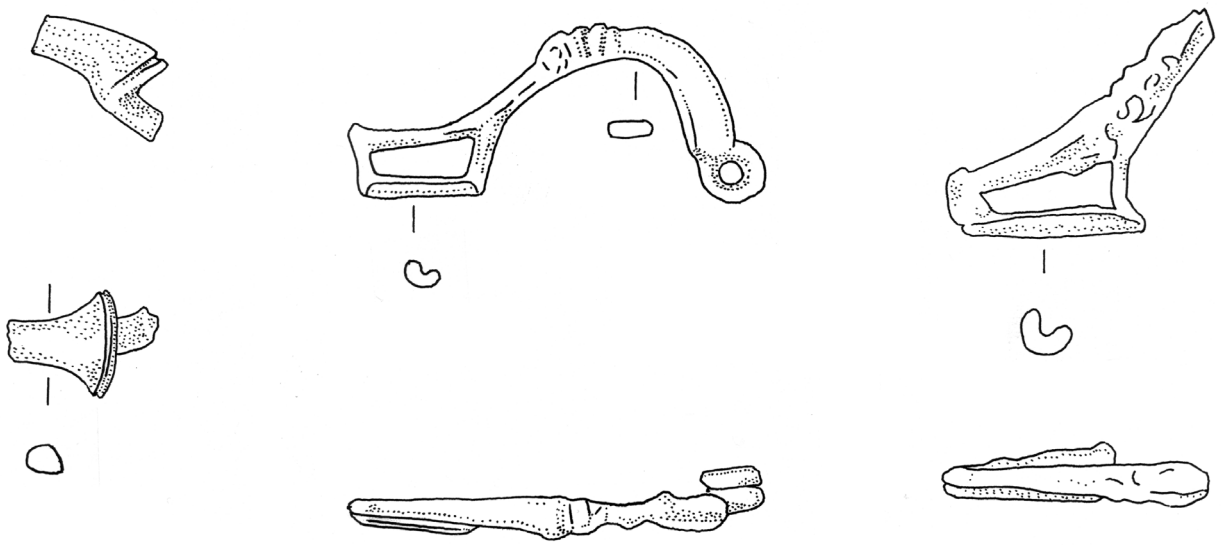
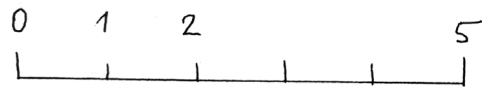
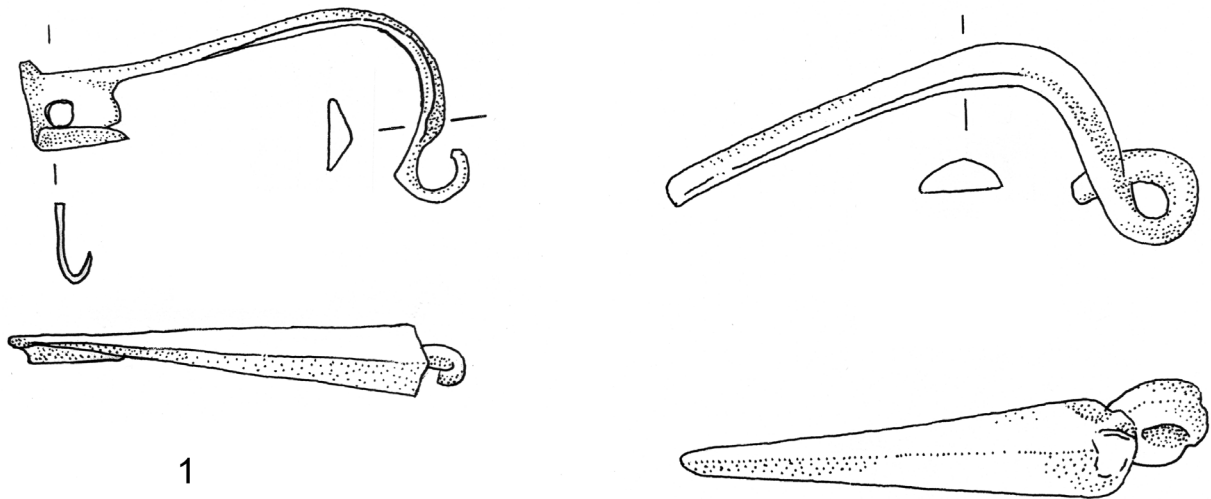


5



6

T. IV.

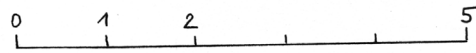
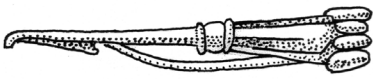
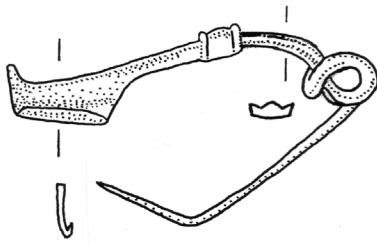


3

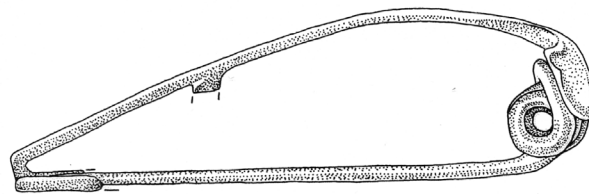
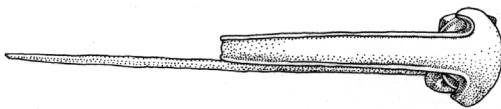
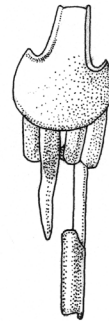
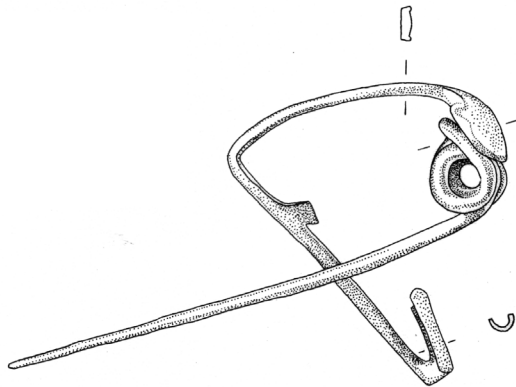
4

5

T.V.



1



2

LITERATURA / LITERATURE

- AGOSTINETTI, P. P., KNOBLOCH, R. 2010. La cronologia della tarda età di La Tène e dell'età augustea nella Transpadana centro-occidentale. *Bollettino di Archeologia on line* I, Volume speciale, 3-21.
- AMOROSO, A. 1889. Le necropoli preistoriche dei Pizzughi. *Atti e memorie della Società Istriana di Archeologia e Storia patria* 5, 225-261.
- BATOVIĆ, Š. 1976. Le relazioni culturali tra le sponde adriatiche nell'età del ferro. U B. ČEČUK, N. MAJNARIĆ-PANDŽIĆ, V. MIROSAVLJAVIĆ, M. SUIĆ (eds.), *Jadranska obala u protohistoriji. Kulturni i etnički problemi*, 11-94. Simpozij održan u Dubrovniku 1972., Zagreb.
- BLEČIĆ KAVUR, M. 2009. Universal and Original. Transformation of style in the North-Adriatic Region. *Keltske študije* II, Montagnac, 198-207.
- BOLLA, M. 1991. Reperti metallici. U D. Caporusso (ed.), *Scavi MM3, Ricerche di Archeologia urbana a Milano durante la costruzione della linea 3 della metropolitana, 1982 - 1990*, 167-172. Milano, Edizioni ET.
- BOŽIČ, D. 1993. Slovenija in srednja Evropa v poznolatskem obdobju. *Arheološki vestnik* 44, 137-152.
- BOŽIČ, D. 2001. Ljudje ob Krki in Kolpi v latenski dobi. *Arheološki vestnik* 52, 181-198.
- BOŽIČ, D. 2008. Poznolatsko-rimsko grobišče v Novem mestu. Ljubljanska cesta in Okrajno glavarstvo, Študije o fibulah in o relativni kronologiji pozne latenske dobe. *Katalogi in monografije* 39, Ljubljana.
- BOŽIČ, D. 2011. Prazgodovinske najdbe s Tonovcovega gradu in željeznodobna kulturna mesta v Posočju. U Z. Modrijan - T. Milavec, *Poznoantična utrjena naselbina Tonovcov grad pri Kobaridu. Najdbe*, 239-269. Opera Instituti Archeologici Sloveniae 24, Ljubljana.
- BUORA, M., CANDUSSIO A., DEMETZ S. 1990. Fibule "ad arpa", o del tipo Almgren 65 in Friuli. *Aquileia Nostra* 61, 78-94.
- BUORA, M., S. SEIDEL (ed.) 2008. Fibule antiche del Friuli. *Cataloghi e Monografie Archeologiche dei Civici Musei di Udine* 9.
- CUNJA, R., MLINAR, M. (ed.) 2010. *S Fibulo v fabulo, Fibule iz Istre, Krasa, iz Notranjske in Posočja med prazgodovino in zgodnjim srednjim vekom*. Katalog razstave, Koper.
- DEMETZ, S. 1994. Tipi di fibule tra il Caput Adriae e l'Europa centrorientale al passaggio dal tardo periodo La Tène all'epoca imperiale romana. U *Lungo la via dell'Ambra, Apporti altoadriatici alla romanizzazione dei territori del Medio Danubio (I sec. a.C. - I sec. d. C.)*. Atti del Convegno di Studio (Udine - Aquileia 16-17 settembre 1994), 205-215.
- DEMETZ, S. 1999. *Fibeln der Spätlatène - und frühen römischen Kaiserzeit in den Alpenländern*. Frühgeschichtliche und provinzialrömische Archäologie. Materialien und Forschungen 4.
- DULAR, J. 2003. Halštatske nekropole Dolenjske. *Opera Instituti archaeologici Sloveniae* 6, Ljubljana.
- FREY, O.-H., GABROVEC, S. 1969. K latenski poselitvi Dolenjske. *Arheološki vestnik* 20, 7-26.
- GABROVEC, S. 1966. Srednjelatensko obdobje v Sloveniji. *Arheološki vestnik* 17, 33-106.
- GABROVEC, S., MIHOVILIĆ, K. 1987. Istarska grupa, *Praistorija jugoslavenskih zemalja*, Sarajevo, 293-338.
- GLOGOVIĆ, D. 2003. Fibeln im kroatischen Küstengebiet, *Prähistorische Bronzefunde* XIV/ 13, Stuttgart.
- GNIRS, A. 1903. Eine vorrömische Nekropole innerhalb der Mauern des antiken Pola. *Jahrbuch der Zentralkommission* 1, 61-69.
- GUŠTIN, M. 1976. *Libna*. Posavski muzej Brežice. Knjiga 3.
- GUŠTIN, M. 1987. La Tenè Fibulae from Istria. *Archeologia Iugoslavica* 24, 43-56.

- GUŠTIN, M. 1991. Posočje in der jüngeren Eisenzeit. *Katalogi in monografije* 27, Ljubljana.
- HORVAT, J. 1997. Sermin, prazgodovinska in zgodnjerska naselbina v severozahodni Istri. *Opera Instituti Archaeologici Sloveniae* 3, Ljubljana.
- LAZAR, I. 1996. Latenske in zgodnjerske najdbe iz Savinje v Celju. *Arheološki vestnik* 47, 289-305.
- LOKOŠEK, I. 1990. Fibule tipo Almgren 65 dalla collezione del Museo Archeologico di Spalato. *Aquileia Nostra* 61, 98-99.
- MARCHESETTI, C. 1883. La necropoli di Vermo presso Pisino nell'Istria. *Bollettino della Società Adriatica di Scienze naturali in Trieste* vol. VIII, 265-294.
- MELLER, H. 2002. *Die fibeln aus dem Reitia-Heiligtum von Este*. Mainz am Rhein.
- MIHOVILIĆ, K. 1972. Nekropola Gradine iznad Limskega kanala. *Histria archaeologica* 3/2, 7-77.
- MIHOVILIĆ, K. 1991. L'Istria dal IV al I secolo a. C. *Antichità Altoadriatiche* 37, 157-164.
- MIHOVILIĆ, K. 1996. Nezakcij, nalaz grobnice 1981. godine. *Monografije i katalogi* 6, Pula.
- MIHOVILIĆ, K. 2001a. Nezakcij. Prapovijesni nalazi 1900. - 1953., *Monografije i katalogi* 11, Pula.
- MIHOVILIĆ, K. 2001b. Prapovijest. Arheološka istraživanja 1997. - 1998. godine/Pula - iza Herkulovih vrata, *Katalog* 60, Pula, 7-14.
- MIHOVILIĆ, K. 2009. New finds of La Tène fibulae from Istria. *Keltske študije* II, Montagnac, 210-216.
- MIHOVILIĆ, K. 2011. Na početku je bila peć. *Katalog* 82, Pula.
- NASCIMBENE, A. 1999. Caverzano di Belluno aspetti e problemi di un centro dell'età del ferro nella media valle del Piave. *Quaderni di Società per la Preistoria e Protostoria della Regione Friuli-Venezia Giulia* 7.
- PEREGO, E. 2011. Engendered Action: Agency and Ritual in Pre-Roman Veneto. U A. Chaniotis (ed.), *Ritual Dynamics in the Ancient Mediterranean: Agency, Emotion, Gender, Reception*, 11-36. Stuttgart: Steiner Verlag.
- PERONI, R. 1976. La "koiné" adriatica e il suo processo di formazione. U B. ČEČUK, N. MAJNARIĆ-PANDŽIĆ, V. MIROSAVLJAVIĆ, M. SUIĆ (eds.), *Jadranska obala u protohistoriji. Kulturni i etnički problemi*, 95-115. Simpozij održan u Dubrovniku 1972, Zagreb.
- SAKARA SUČEVIĆ M. 2004. Kaštelir prazgodovinska naselbina pri Novi Vasi/Brtonigla (Istra). *Annales Mediterranea*, Koper.
- SALERNO, R. 2002. La nuova scoperta. Il santuario orientale a Meggiaro. I bronzi e gli altri votivi. U RUTA SERAFINI, A. (ed.), *Este preromana: una città e i suoi santuari*, 149-163. Treviso.
- STARAC, A. 2009. Nalaz rimskog svetišta u četvrti Sv. Teodora u Puli, Arheološka istraživanja 2008. *Histria archaeologica* 38-39/2007-2008, 123-164.
- SAGADIN, M. 2010. Zgodnjeantično obzidje Karnija. *Kranjski zbornik*, 19.
- STARAC, A. 2011. Pula, rađanje grada. *Katalog* 83, Pula.
- ŠONJE A. 1966. Prehistorijski nalazi poslije drugog svjetskog rata u Poreštini. *Jadranski zbornik* 6, 295-330.
- TERŽAN, B. 1976. Certoška fibula. *Arheološki vestnik* 27, 317- 443.
- TERŽAN, B., LO SCHIAVO, F., TRAMPUŽ-OREL, N. 1984. Most na Soči (S. Lucia) II, *Katalogi in monografije* 23/1, Ljubljana.
- VIDULLI TORLO M. (ed.) 2002. La necropoli di San Servolo. Veneti, Istri, Celti e Romani nel territorio di Trieste. *Quaderni di Archeologia* 1, Civici Musei di Storia ed Arte di Trieste, Trieste.