

Buccal dental microwear and stable isotopes of El Collado: A mesolithic site from Spain

• Alrousan M (1), Al-Shorman A (1), Galbany J (2), Perez-Perez A (2) •

1 - Department of Anthropology, Faculty of Archaeology and Anthropology, Yarmouk University, Irbid, Jordan

2 - Department de Biologia Animal – Antropología Física / Universitat de Barcelona, Spain

Address for correspondence:

Alrousan M
Department of Anthropology
Faculty of Archaeology and Anthropology
Yarmouk University
Irbid, Jordan
E-mail: rousan78@yahoo.es

Bull Int Assoc Paleodont. 2013;7(1):4-11.

Abstract

This study examines the correlation between buccal dental microwear and stable isotopes. The buccal surface of post-canine teeth casts from El Collado, the largest Mesolithic site in Spain, were examined under Scanning Electron Microscope; photomicrographs were taken from the middle third of the buccal surface with magnification 100X. Only six individuals passed the criteria for buccal dental microwear analysis. The photomicrographs were treated by adobe Photoshop 8.01 to cover an area 0.56 mm² of middle third of buccal surface, the output photomicrographs were digitized using Sigmascan Pro 5 by SPSS. Then the correlation between buccal microwear pattern and stable isotopes of the same individuals, of the previous study of Guixé et al., 2006, was examined using a Pearson test. Statistical analysis revealed that there is no significant correlation between stable isotopes and buccal dental microwear of the people of the Mesolithic site of El Collado. The historical and archaeological documentation suggest that the Mesolithic people tended to consume marine food. Fish-drying techniques were used during the Mesolithic period which allowed the introduction of dust and sand to the fish. These abrasive particles affected the buccal dental microwear pattern, so that no correlation between the isotopes and microwear may be expected.

This also suggests that the buccal dental microwear pattern exceeds dietary reconstruction to reconstruct food processing techniques.

Keywords: Microwear; El Collado; Diet

Introduction

Diet is a fundamental aspect in understanding culture, paleobiology and the evolutionary history of ancient human populations and hominin species. Reconstructing paleodiet from the archaeological sites is usually dependant on plants and animal remains. But the presence of these remains does not mean that it was an important part of the diet of the ancient population. Therefore, bioarchaeologists and paleontologists tend to extract dietary information using direct methods or techniques which focus on the skeletal remains.

One technique has been the use of chemical analysis of bone and teeth. Bone chemistry provides strong documentation of the diet of past human populations. The most important kind of chemical analysis used in dietary and nutritional studies is measuring the ratios of certain stable isotopes in skeletal and dental tissues of ancient human populations. Most studies used stable carbon isotopes ^{13}C and ^{12}C . The ratio of carbon stable isotopes in humans is dependent on the plants that were eaten by human during life.

Human who consume terrestrial plants and animal proteins have $\delta^{15}\text{N}$ values in bone collagen of about 6–10 ‰ whereas consumers of marine food sources may have $\delta^{15}\text{N}$ values of 15–20 ‰ (1). Humans that consume only terrestrial protein sources may have collagen $\delta^{13}\text{C}$ values of about -20‰, while humans that consume the majority (>90%) of their protein from marine sources may have collagen $\delta^{13}\text{C}$ values close to -12‰ (2).

A widely used technique to reconstruct diet is dental microwear analysis. Microwear appears as microscopic features (pits and striations) on the occlusal surface of a tooth, caused by abrasive particles and tooth to tooth contact (4, 31). The presence of these features on the buccal surfaces of teeth is caused by abrasive particles in the diet (5-10). The microwear pattern is determined according to the number of striations, length and orientation on the buccal surfaces, which have been proven to be correlated with dietary hardness and abrasiveness (6, 9, 11-13). The hard texture of diet usually comes from two sources: the abrasive particles from the opal phytoliths of the plant tissue (14,15), or the contamination of food by sand and dust during its processing or in the natural environment (8, 12,16).

The length, orientation and the number of striations on the buccal surface vary according to the food consumed by an individual. Meat based diets tend to create more vertical striations compared to plant based diets which tend to form more horizontal striations (9, 11, 17-19). However, harder foodstuffs, due the presence of abrasive particles, tend to generate more striations (7, 8, 20).

The total number of striations or the density of striations is the most indicative variables for dietary reconstruction. The higher density of striations in Neanderthal teeth is due to more plant consumption (7). The higher density of buccal microwear striations in *H. heidelbergensis* teeth from Sima de los Huesos was due to more abrasive dietary habits (6). In addition, the higher density of striations in the Mesolithic population from Portugal is due to contamination during food processing (8). Also the length of buccal microwear striations is highly correlated with the texture of diets that require more masticatory demand. The very long striations on the teeth of Neolithic populations of the Near East are due the introduction of cereals in diet, accompanied by the use of grinding stones (21). The index of the length of horizontal and vertical striations can be used to classify human populations depending on diet to: pastoralists, agriculturists, carnivores, and hunter-gathers (5, 9, 11). The first evidence of extensive marine food intake was reported from the coastal Mesolithic populations in Atlantic areas of Europe (22, 23) and the Baltic (24). While inland the people of the Mesolithic were less dependent on marine food than plant consumption, which was assessed by stable Isotopes and buccal dental microwear analyses (21, 25).

These two techniques (stable isotopes and buccal microwear) have been common in biological anthropology, but unfortunately the correlation between both of them has not been considered. Accordingly, this study tests the correlation between stable isotopes of dental enamel and the number of buccal microwear striations.

The site

El Collado is the largest Mesolithic site in the Spanish Levant, this site is located near the city of Oliva (Valencia), about 3 km from the eastern coast of Spain (Figure 1). The area of the site has a rich ecosystem which allowed continuous occupation from middle Paleolithic to the Neolithic and later periods as well (26). Fifteen graves were excavated from the site and radiocarbon dated to $7,57\pm 160$ BP and $7,640\pm 120$ BP (26,27), which was calibrated to 6630–6250BC (28,29).

Materials and Methods

Since the buccal microwear pattern is an accumulative process that depends on the age of an individual and time since tooth eruption (5, 12, 21), only adult individuals was sampled for this study. The samples are characterized by being well-preserved without dental pathologies. The sampled teeth represent six adult individuals. Before examining the teeth under Scanning Electron Microscope, the teeth were gently cleaned with pure acetone, and then rinsed with ethanol (70%) to eliminate any grits that may mask microwear features. Molds of the original teeth were obtained using Polyvinyl-siloxane President Microsystems™ (Coltene Regular Body) (30,31), and the positive casts were obtained using epoxy resin (Epo-Tek 301, By QdA) with a two-stage

centrifugation to prevent the formation of air bubbles that may mask the striations on the buccal surface.

Then the casts were mounted on aluminum stubs using thermo-fusible gum, the gums were then stained using a colloidal silver stain. The casts were then coated with a 400 Å gold layer. The SEM settings were 15 KV with 0° tilt angle of the secondary electrons to meet the standard of the buccal microwear technique. All the micrographs were obtained at 100X magnification, covering an exact area of 0.56 mm² of enamel on the medial third of the buccal side of the tooth crown. The side of each square image measures 748.331 µm. Each image was processed by a high pass (50 pixel) filter and automatic level enhancement using Photoshop (Adobe CS 8.2.1), Figure 2. The measurements of striations were made using a special program SigmaScan Pro5 by SPSS. The microwear pattern of each analyzed micrograph included the number (N), average length (X) and standard deviation of the length (S) of all observed striations (T), the striations were divided by categories of orientation in 45-degree intervals: vertical (V), horizontal (H), mesio-occlusal to disto-cervical (MD), and disto-occlusal to mesiocervical (DM). Thus, a total of 15 variables (N, X and S for T, V, H, MD and DM orientations) were derived for the sample studied. All the variables studied passed Kolmogorov-Smirnov Normality tests.

The data of stable isotopes were obtained from a previous study considering the same individuals of this study (25). Using SPSS 15, Pearson correlation was performed between all the variables of buccal microwear pattern and isotopes results (δ 13C, δ 15N, %C, and %N).

Results and Discussion

The descriptive statistics of buccal microwear pattern and stable isotopes of each individual are shown in Table 1. Kolmogorov-Smirnov normality tests showed that none of buccal microwear variables differed significantly from normality. Therefore, the parametric statistical tests could be applied to the raw buccal microwear data. No statistically significant correlations were discovered between buccal microwear and stable isotopes using Pearson correlation.

Stable isotope analysis is widely used as an informative tool in dietary reconstruction. But this technique is affected by many factors that could modify the results; among them is digenesis (32-35).

Stable isotopes or trace elements could not reflect the texture of the food, but they reflect the chemical constitute of food (36-40). Unfortunately, food processing can affect both the chemical analysis of teeth by changing the chemical constitute of bone through adding elements and compounds from food utensils to teeth (46)

During the Mesolithic period, the subsistence economy was dependent on marine resources (23, 25, 41). It is known that ancient human populations tended to use fish-drying techniques as a tool of

food processing (8, 42-44). This type of food processing increased the chance of contamination with dust which could affect the tooth structure. This phenomenon was noticed in ancient population of the Arabian Gulf, who exhibited a high rate of dental attrition (42,43), and the same results were found in Eskimo samples (44). When comparing the buccal dental microwear of the people of the Mesolithic of Portugal and the Natufians of the Near East, the Mesolithic samples show high tendency of buccal microwear features probably due to the contamination of their diet (fish) (8).

It is known that using utensils in food processing came after the introduction of pottery during the Neolithic period (45). Accordingly, chemicals from utensils did not affect the chemistry of teeth in the study. Therefore, the lack of correlation between stable isotopes and buccal dental microwear does not come from stable isotopes.

Food processing through fish-drying could affect the hardness of the diet by introducing more abrasive materials which cause microwear patterns, but not stable isotopes. The introduction of the abrasive particles during food processing, in the form of dust entering from the environment, may be the reason for higher dental microwear densities than usual, and a lack of correlation between buccal dental microwear and stable isotopes.

Food processing techniques are important issues used to reconstruct the past life of human populations. This issue can not be detected by stable isotopes alone, but buccal microwear can be used to reconstruct food processing techniques as well as diet.

Acknowledgement

This paper was funded by the Spanish project CGL2007-60502/BTE by Ministerio de Educacion y Ciencia, directed by Prof. Dr. A. Perez-Perez. All SEM micrographs were taken at Serveis Científicotecnics (SCT) at Universitat de Barcelona (Spain).

References

1. Ambrose SH. Effects of diet, climate and physiology on nitrogen isotope abundances in terrestrial foodwebs. *J Archaeol Sci* 1991;18:293–317.
2. Richards MP, Hedges REM, Molleson TI, Vogel JC. Stable Isotope Analysis Reveals Variations in Human Diet at the Poundbury Camp Cemetery Site. *J Archaeol Sci* 1998;25:1247–52.
3. Every, RG. The gosis in prosimians. In: Martin RD, Walker A, Doyle GA, editors. *Prosimian biology*. London: Duckworth. 1974; 579–620.
4. Walker PL. A quantitative analysis of dental attrition rates in the Santa Barbara Channel area. *Am J Phys Anthropol*. 1978 Jan;48(1):101-6.
5. Pérez-Pérez A, Lalueza C, Turbón D. Intraindividual and intragroup variability of buccal tooth striation pattern. *Am J Phys Anthropol*. 1994 Jun;94(2):175-87.
6. Pérez-Pérez A, Bermúdez De Castro JM, Arsuaga JL. Nonocclusal dental microwear analysis of 300,000-year-old *Homo heilderbergensis* teeth from Sima de los Huesos (Sierra de Atapuerca, Spain). *Am J Phys Anthropol*. 1999 Apr;108(4):433-57.
7. Pérez-Pérez A, Espurz V, Bermúdez de Castro JM, de Lumley MA, Turbón D. Non-occlusal dental microwear variability in

- a sample of Middle and Late Pleistocene human populations from Europe and the Near East. *J Hum Evol.* 2003 Apr;44(4):497-513.
8. Alrousan M, Pérez-Pérez A. Non-occlusal microwear of the last hunter-gatherer from Near East and Europe. In: *Gene, ambiente y enfermedades en las poblaciones humanas*. Edited by Amada, J, Nogués, and Pinilla, S. University of Zaragoza Press. 2008; 45-59.
9. Alrousan M, Pérez-Pérez A. Buccal Dental Microwear as an Indicator of Dietary Habits of the Natufian People of El Wad and Kebara. In: *Bioarchaeology and behavior The People of the ancient Near East*. Ed by Megan A. Perry. UFP. 2012 p; 165-179
10. Estebanaranz F, Martínez LM, Galbany J, Turbón D, Pérez-Pérez A. Testing hypotheses of dietary reconstruction from buccal dental microwear in *Australopithecus afarensis*. *J Hum Evol.* 2009 Dec;57(6):739-50.
11. Lalueza C, Pérez-Pérez A, Turbón D. Dietary inferences through buccal microwear analysis of middle and upper Pleistocene human fossils. *Am J Phys Anthropol.* 1996 Jul;100(3):367-87.
12. Romero A, De Juan J. Intra- and Interpopulation Human Buccal Tooth Surface Microwear Analysis: Inferences about Diet and formation Processes. *Anthropologie.* 2007; XLV/1:61-70.
13. Alrousan M, Pérez-Pérez A, Molleson T. Buccal Dental Microwear Pattern as an Indicator of Dietary Behavior in a Human Neolithic Tooth Sample from Abu Hureyra. *Am J Phys Anthropol.* 2009;138(S48):76.
14. Piperno D. *Phytolith analysis: an archaeological and geological perspective*. San Diego: Academic Press; 1988.
15. Fox CL, Pérez-Pérez A, Juan J. Dietary Information through the Examination of Plant Phytoliths on the Enamel Surface of Human Dentition. *J Archaeol Sci* 1994;21:29–34.
16. Romero A, De Juan J. Microscopic Feature of Enamel Incisor Surface: Implication as Regards feeding Behavior in Bioarchaeological Groups. *International Journal of Dental Anthropology.*2003;4:1-9.
17. Puech P. Recherche sur le mode d'alimentation des hommes du Paleolithique par l'étude microscopique des couronnes dentaires. In: *La Préhistoire Française I*. Edited by H. de Lumley. Centre National de la Recherche Scientifique. 1976: 708-709.
18. Puech P. The diet of early man: evidence from abrasion of teeth and tools. *Curr Anthropol.* 1979;20(3):592.
19. Puech P-F, Albertini H, Serratrice C. Tooth microwear and dietary patterns in early hominids from Laetoli, Hadar and Olduvai. *J Hum Evol* 1983;12:721–9.
20. Polo-Cerdá M, Romero A, Casabó J, De Juan J. The Bronze Age burials from Cova Dels Blaus (Vall d'Uixó, Castelló, Spain): an approach to palaeodietary reconstruction through dental pathology, occlusal wear and buccal microwear patterns. *Homo.* 2007;58(4):297-307.
21. Alrousan M. *The Mesolithic-Neolithic Transition in the Near East: Biological implications of the shift in subsistence strategies through the analysis of dental morphology and dietary habits of human populations in the Mediterranean area 12,000-5,000 B.P.* PhD dissertation. University of Barcelona, Spain. 2009.
22. Richards, M. P. Mellars P. Stable isotopes and the seasonality of the Oronsay middens. *Antiquity.* 1998;72:178–84.
23. Lubell D, Jackes M, Schwarcz H, Knyf M, Meiklejohn C. The Mesolithic-Neolithic Transition in Portugal: Isotopic and Dental Evidence of Diet. *J Archaeol Sci* 1994;21:201–16.
24. Lidén K. *Prehistoric diet transitions*. Stockholm: Stockholm University. 1995.
25. Guixé E, Richards M, Subira M.E. Palaeodiets of Humans and Fauna at the Spanish Mesolithic Site of El Collado. *Curr Anthropol.* 2006.47:547-556.
26. Apricio . *Los orígenes de Oliva*. Real Academia de Cultura Valenciana, Aula de Humanidades y Ciencias, Serie Histórica. 1992; 9:75–143.
- 27 Pérez- Pérez A, Chimenos C, Lalueza C, Mercadal O. Human remains from the Mesolithic site of El Collado (Oliva, Valencia, Spain). *Homo.*1995; 45(3): 243-56.
28. Stuiver M, Reimer P. Extended 14C database and revised CALIB radiocarbon calibration program. *Radiocarbon.* 1993; 35:215–30.
29. Stuiver M, Reimer P, Reimer R. CALIB 5.0.1. WWW Program and documentation. 2005.
30. Galbanyn G, Martinze L, Pérez-Pérez A. Tooth Replication Techniques, SEM Imagine and Microwear analysis in Primates: Methodological Obstacles. *Anthropologie.*2004; 1:5-12.
31. Ungar P, Grine F, Teaford M. Dental microwear indicates that *Paranthropus boisei* was not a hard-object feeder. *PLoS ONE.* 2008; 3:1-6.
32. Steinhour WD, Stokes MR, Clark JH, Rogers JA, Davis CL, Nelson DR. Estimation of the proportion of non-ammonia-nitrogen reaching the lower gut of the ruminant derived from bacterial and protozoal nitrogen. *Br J Nutr.* 1982 Sep;48(2):417-31.
33. Price TD, Blitz J, Burton J, Ezzo JA. Diagenesis in prehistoric bone: Problems and solutions. *J Archaeol Sci* 1992;19:513–29.
34. Kohn M, Schoeninger M, Barker W. Altered states: Effects of diagenesis on fossil tooth chemistry. *Geochimica et*

Cosmochimica Acta. 1999; 63: 2737–2747.

35. L \ddot{o} sch S, Grupe G, Peters J. Stable isotopes and dietary adaptations in humans and animals at pre-pottery Neolithic Nevali Cori, southeast Anatolia. *Am J Phys Anthropol.* 2006 Oct;131(2):181-93.

36. Deniro MJ, Epstein S. Carbon isotopic evidence for different feeding patterns in two hyrax species occupying the same habitat. *Science.* 1978 Sep 8;201(4359):906-8.

37. DeNiro M, Epstein S. Influence of Diet in the Distribution of Nitrogen Isotope in Animals. *Geochimica et Cosmochimica Acta.* 1981; 45: 341-351.

38. Schoeninger MJ, DeNiro MJ, Tauber H. Stable nitrogen isotope ratios of bone collagen reflect marine and terrestrial components of prehistoric human diet. *Science.* 1983 Jun 24;220(4604):1381-3.

39. Grine F, Ungar P, Teaford M. Error Rates in Dental Microwear Quantification Using Scanning Electron Microscopy. *Scanning.* 2002;24:144-153.

40. Al-Shorman A. Stable carbon isotope analysis of human tooth enamel from the Bronze Age cemetery of Ya'amoun in Northern Jordan. *J Archaeol Sci* 2004;31:1693–8.

41. Richards MP, Hedges REM. Stable Isotope Evidence for Similarities in the Types of Marine Foods Used by Late Mesolithic Humans at Sites Along the Atlantic Coast of Europe. *J Archaeol Sci* 1999;26:717–22.

42. Macchiarelli R. Prehistoric "fish-eaters" along the eastern Arabian coasts: dental variation, morphology, and oral health in the Ra's al-Hamra community (Qurum, sultanate of Oman, 5th-4th millennia BC). *Am J Phys Anthropol.* 1989 Apr;78(4):575-94.

43. Littleton J, Frohlich B. Fish-eaters and farmers: dental pathology in the Arabian Gulf. *Am J Phys Anthropol.* 1993 Dec;92(4):427-47.

44. Elvery MW, Savage NW, Wood WB. Radiographic study of the broadbeach aboriginal dentition. *Am J Phys Anthropol.* 1998 Oct;107(2):211-9.

45. Twiss. K. The Neolithic of southern Levant. *Evol Anthropol.*2007;16: 24-35.

46. Deniro MJ, Schoeninger MJ, Hastorf CA. Effect of heating on the stable carbon and nitrogen isotope ratios of bone collagen. *J Archaeol Sci* 1985;12:1–7.



Figure 1. The Location of El Collado (25)

Ind. No.	$\delta^{13}\text{C}$ (‰)	$\delta^{15}\text{N}$ (‰)	C:N	%C	%N	NH	XH	SH	NV	XV
1	-19.500	10.200	3.400	23.700	8.200	37.000	75.238	49.502	67.000	84.277
2	-19.100	8.900	3.300	24.900	8.900	29.000	69.010	38.339	11.000	126.717
3	-17.600	10.200	3.200	15.900	5.800	35.000	171.647	166.155	5.000	160.329
4	-17.600	12.800	3.400	24.100	8.300	42.000	86.367	56.698	27.000	90.787
5	-18.200	10.600	3.300	21.700	7.600	20.000	268.911	219.548	10.000	82.990
6	-18.200	10.900	3.300	27.000	9.500	25.000	83.236	108.868	4.000	83.293

Ind. No.	SV	NMD	XMD	SMD	NDM	XDM	SDM	NT	XT	ST
1	51.741	114.000	78.258	68.311	14.000	78.404	61.321	232.000	79.523	60.427
2	112.124	51.000	66.482	59.065	37.000	71.664	45.395	128.000	73.729	59.517
3	72.967	22.000	76.474	44.172	31.000	98.516	136.219	93.000	124.147	136.472
4	55.552	114.000	69.592	61.953	24.000	60.490	24.669	207.000	74.705	57.465
5	61.762	24.000	120.716	79.300	22.000	121.053	111.527	76.000	154.848	151.478
6	62.418	26.000	82.922	64.059	21.000	135.970	110.946	76.000	97.703	95.736

Table 1. Descriptive statistics of microwear and stable isotopes

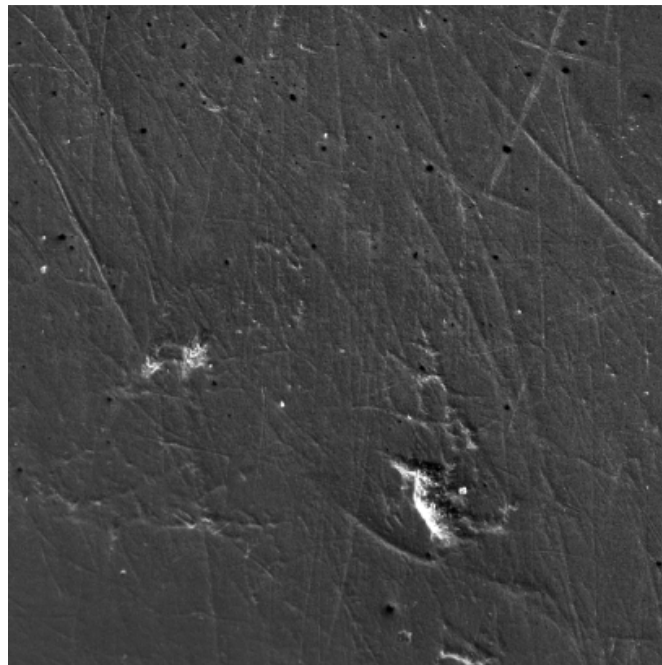


Figure 2. Cropped micrograph