

TRANSCRANIAL SONOGRAPHY IN MOVEMENT DISORDERS

Mislav Budišić¹, Arijana Lovrenčić-Huzjan¹, Vlasta Vuković¹, Jelena Bošnjak¹, Zlatko Trkanjec¹, Anka Aleksić-Shibabi² and Vida Demarin¹

¹University Department of Neurology, Sestre milosrdnice University Hospital, Reference Center for Neurovascular Disorders of the Ministry of Health and Social Welfare of the Republic of Croatia, Zagreb; ²Department of Neurology, Šibenik General Hospital, Šibenik, Croatia

SUMMARY – Neuroimaging techniques are nonspecific for basal ganglia impairment in the majority of movement disorders, therefore the diagnosis is still based on clinical examination. Recent reports show the substantia nigra (SN) hyperechogenicity detected by transcranial sonography (TCS) to be a specific finding in Parkinson's disease (PD). The aim of the study was to assess the possibility of TCS to help differentiate PD from essential tremor (ET) by measuring SN echogenicity. The study included 50 PD patients, 20 ET patients, and 50 healthy control subjects. The recordings were done in axial plane by a standardized protocol; SN was displayed, encircled, measured two times, and mean value was calculated and presented in cm². In the control, PD and ET groups, bilateral combined mean SN size was 0.17 cm² (± 0.06), 0.26 cm² (± 0.06) and 0.16 cm² (± 0.04), respectively. Our data showed a significant difference in SN echogenic size between PD and control group as well as between ET and PD group ($p < 0.001$) but not between control and ET group ($p = 0.240$). The measurement of SN by use of TCS was found to be a valuable tool in differentiating PD from other movement disorders. Due to the portability, noninvasiveness and easy reproducibility, TCS might help in diagnosing PD, or in the differential diagnosis of vague clinical cases.

Key words: *Parkinson disease – diagnosis; Parkinson disease – ultrasonography; Substantia nigra – ultrasonography; Ultrasonography, Doppler – transcranial*

Introduction

Neuroimaging techniques are quite nonspecific for basal ganglia impairment in the majority of movement disorders, therefore the diagnosis is still based on clinical examination¹⁻³. Maximal accuracy in such a differential diagnostic procedure for Parkinson's disease (PD) as the most common movement disorder is 90%, while the average misdiagnosis rate for PD in early stages is as high as 20%-30%⁴.

Recent reports show that substantia nigra (SN) hyperechogenicity detected by transcranial sonography (TCS) is a specific finding of PD⁵⁻⁸. Based on ultrasound wave reflection and velocity, quantified in echogenicity,

TCS allows brain imaging in two-dimensional black and white slices. Although its spatial resolution is lower than in other imaging modalities, it enables visualization of some basal ganglia as hyperechogenic structures. Lately, TCS B-mode has also been used as a functional marker in the detection of disrupted midline brainstem raphe in patients with unipolar depression and for evaluation of basal ganglia in some movement disorders. Also, TCS proved to be reliable in the evaluation of the ventricular system of the brain and vascular status of the patient⁹⁻¹². We initiated this study to assess the possibility of TCS to help differentiate PD from essential tremor (ET) by measuring echogenicity of the SN.

Patients and Methods

Patients

The study included 50 PD patients, 20 ET patients, and 50 healthy control subjects. PD diagnosis and se-

Correspondence to: *Mislav Budišić, MD*, University Department of Neurology, Sestre milosrdnice University Hospital, Vinogradska c. 29, HR-10000 Zagreb, Croatia

E-mail: mislavbudisic@yahoo.co.uk

Received October 20, 2006, accepted November 28, 2006

verity were based on the Parkinson's Disease Society Brain Research Centre clinical criteria, Unified Parkinson's Disease Rating Scale (UPDRS) and Hoehn & Yahr rating scale (H&Y)^{13,14}. Inclusion criteria for control group were no prediagnosed PD or any form of extrapyramidal disorders. ET diagnosis was established according to the Consensus Statement of the Movement Disorder Society on Tremor¹⁵. All patients were treated at University Department of Neurology, Sestre milosrdnice University Hospital, Zagreb, Croatia, and received optimal medical anti-PD treatment. Each patient underwent complete neurological and sonographic examination performed by two independent physicians blinded for the results of the other one and of clinical examination. We also correlated TCS findings with clinical characteristics of PD.

Methods

We used Aloka ProSound SSD-5500 equipped with 2 MHz transducer to perform TCS. Insonation was done through both temporal "bone windows" on intact skull. Penetration depth was 12 cm and image gain was adopted individually. Recordings were done in axial plane by standardized protocol; SN was displayed, encircled, measured two times, and mean value was calculated and presented in cm². Special attention was paid to the lateral part, locus of SN within⁵. Tilting the probe by 10 degrees up, the ventricular system is shown as anechoic area, surrounded by a thin hyperechogenic margin. The distance between two hyperechogenic margins was calculated as a diameter of the 3rd ventricle. As a cut-off

margin for detection of hyperechogenicity 0.20 cm² was used because it represents the upper 75th percentile of the median value in healthy subjects⁵⁻⁷.

Statistics

Descriptive statistics included median with lower (25th percentile) and upper (75th percentile) quartile. Mann Whitney U-test and Kruskal Wallis test were used on between-group comparison.

Results

Median age of our PD and ET patients was 63.3 and 61.5 years, respectively. Control group included 25 female and 25 male subjects, median age of 60.5 years. We excluded ten (12%) individuals due to impossible recording or incomplete insonation. Clinical examination of PD patients revealed an average H&Y score of 2 (1-5) and UPDRS-III score of 18.3 (± 6.4). The average duration of PD was 5 (1-19) years. Patient clinical and demographic data are shown in Table 1.

In the control group, bilateral combined mean SN size was 0.17 cm² (± 0.06); 0.18 cm² (± 0.04) on the right and 0.17 cm² (± 0.04) on the left side. All but seven (14%) healthy subjects had SN size below the hyperechogenic 0.20 cm² margin. The mean bilateral SN size in PD group was 0.26 cm² (± 0.06); 0.26 cm² (± 0.05) on the left and 0.27 cm² (± 0.06) on the right side, which was statistically highly significantly different from the control group ($p < 0.001$). Six PD patients had SN extent (12%) within the normal range, whereas 44 (88%)

Table 1. Patient demographic and epidemiological data

	Parkinson's disease patients	Essential tremor patients	Control subjects
n	50	20	50
Age (yrs)	63.3 \pm 11	61.5 \pm 10	60.5 \pm 19
Duration (yrs)	5 (1-19)		
Side affected	Left 63% Right 37%		
Dominant symptom	Tremor 45% Rigor 55%		
Hoehn and Yahr rating scale	2 (1-5)		
UPDRS III	18.3 (± 6.4)		

UPDRS=Unified Parkinson's Disease Rating Scale motor part III

Table 2. Transcranial sonography findings

	Parkinson's disease patients	Essential tremor patients	Control subjects
Substantia nigra median size (cm ²)	0.26 cm ² (± 0.06)	0.16 cm ² (± 0.04)	0.17 cm ² (± 0.06)
Substantia nigra size <0.20 cm ²	n=6 (12%)	n=16 (80%)	n=43 (86%)
Substantia nigra size >0.20 cm ²	n=44 (88%)	n=4 (20%)	n=7 (14%)
Third ventricle	8.0 mm (7.5-9.1)*	8.3 mm (6.9-9.6)*	7.8 mm (7.2-7.9)*

* 25th - 75th percentile

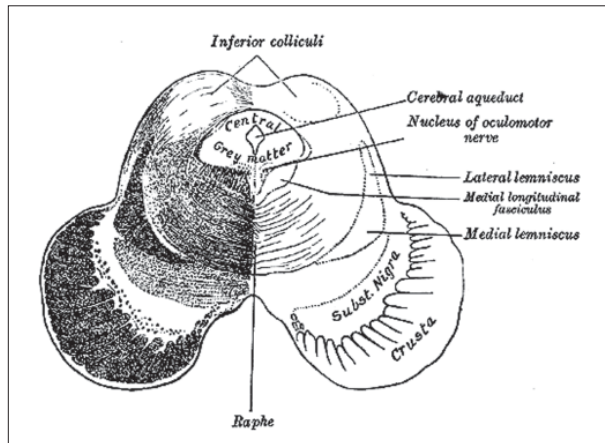


Fig. 1. Midbrain transsection at the level of mesencephalon.

patients had marked bilateral SN hyperechogenicity. Patients with ET had a mean SN size of 0.16 cm^2 (± 0.04); 0.16 cm^2 (± 0.04) on the right and 0.15 cm^2 (± 0.05) on the left side, which was significantly different from PD group ($p < 0.001$) but not from control group ($p = 0.240$). Hyperechogenicity was found in four (20%) ET group patients. The mean 3rd ventricle diameter in PD, control and ET group was 8.0 mm (7.5-9.1, 25th – 75th percentile), 7.8 mm (7.2-7.9) and 8.3 mm (6.9-9.6), respectively, yielding no statistically significant difference (Table 2). There was no significant correlation of PD clinical characteristics (UPDRS, H&Y, predominant symptom and disease duration) with TCS findings.

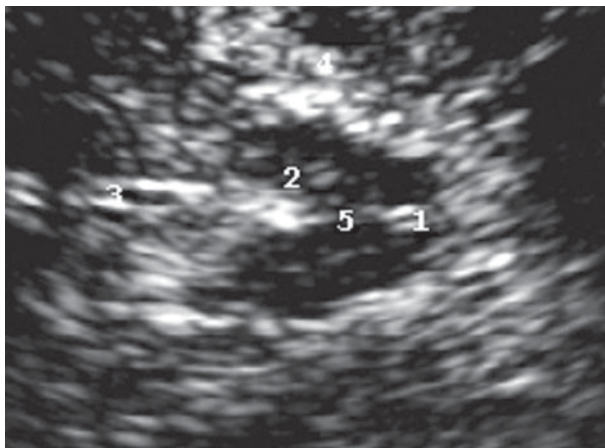


Fig. 2. TCS image at the same level. Normal TCS findings in a healthy adult. Butterfly-shaped mesencephalon of low echogenicity surrounded by hyperechogenic basal cisterns (4). In medial line NN raphe (5) and (1) aqueducts are shown. Nucleus ruber (2). Third ventricle (3).

Discussion

Our study showed the increased SN echogenicity on TCS to be a characteristic feature of PD. Assuming appropriate temporal bone windows, this finding could be used to distinguish patients with PD from ET or healthy controls from PD. However, TCS failed to make such a differentiation between ET patients and healthy controls, indicating that the pathological substrate of ET might not involve SN impairment. All but 14% of healthy subjects had SN echogenicity within the normal range. Such findings are consistent with the results of recent studies that showed 90% of patients with Parkinson's disease to exhibit SN hyperechogenicity, while the prevalence of this pattern in healthy individuals is around 10%⁵⁻⁷. In those cases, it might present a functional marker for the subclinical phase of the disease. It is also noteworthy that the prevalence rate of SN hyperechogenicity in healthy individuals matches the rate of incidental Lewy body disease, which is considered as a pre-clinical form of PD⁶.

Since the diagnosis of PD is still based on clinical examination, there is a high rate of misdiagnosed cases largely due to the failure to distinguish PD from similar disorders the symptoms of which are often overlapping, including multiple system atrophy (MSA), progressive supranuclear palsy (PSP), corticobasal degeneration, dementia with Lewy bodies and ET⁴. The rate of misdiagnosis is particularly high at the early stage of the disease, when motor signs have not yet fully developed.

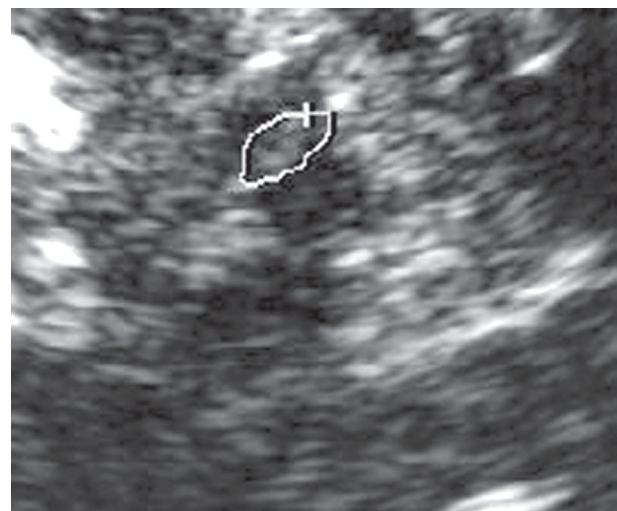


Fig. 3. TCS pattern of hyperechogenic substantia nigra in a Parkinson's disease patient. The substantia nigra area is encircled and measured.

Even at that point, 60%-80% of the dopamine-producing neurons have died-off and therapy initiation appears to be crucial¹⁶. TCS proved to be able to record even these subtle changes before the symptoms have occurred^{7,17}. The cause of such an increased echogenic feature in PD is still unknown^{18,19}. Since every ultrasonographic examination registers changes in tissue impedance and SN is shown as low echogenic or anechogenic in the majority of healthy individuals, it is possible that changes in the cytoarchitecture or mineral deposits might be the cause of this specific SN finding^{20,21}. Recent reports have revealed that the increase in SN signal might be evoked by elevated brain tissue iron levels. Iron is a potent catalyst of reactions forming oxygen radicals, which can induce a cascade of cell damages, mitochondrial or membrane lipid peroxidation²²⁻²⁴. Results of such neurodegenerations can be seen on TCS but there is the need of an appropriate temporal "bone-window". The prevalence of inappropriate temporal bone windows for TCS is around 10%-15% and it increases with age. Also, axial resolution is limited by the length of the transmitted ultrasound pulse, and lateral resolution depends on the width of the ultrasonic beam. On the other hand, the image quality depends on the system parameters set by each investigator, resulting in certain subjectivity that can be overridden by semiquantitative assessment.

In conclusion, the measurement of SN by TCS is a valuable tool in differentiating PD from other movement disorders. Due to portability, noninvasiveness and easy reproducibility, TCS might help in diagnosing PD, or in differential diagnosis in vague clinical cases.

References

- BURN DJ, BROOKS DJ. Nigral dysfunction in drug-induced parkinsonism: an 18F-dopa study. *Neurology* 1993;43:552-6.
- GORELL JM, ORDRIDGE RJ, BROWN GG, *et al.* Increased iron-related MRI contrast in substantia nigra in Parkinson's disease. *Neurology* 1995;45:493-8.
- SCHWARZ J, LINKE R, KERNER M, MOZLEY D, TRENK-WALDER C, GASSER T, TATSCH K. Striatal dopamine transporter binding assessed by [I-123] IPT and single photon emission computed tomography in patients with early Parkinson's disease. *Arch Neurol* 2000;57:205-8.
- POEWE W, WENNING G. The differential diagnosis of Parkinson's disease. *J Neurol* 2002;9:23-30.
- BECKER G, SEUFERT J, BOGH DAN U, REICHMANN H, REINERS K. Degeneration of substantia nigra in chronic Parkinson's disease visualized by transcranial color-coded real-time sonography. *Neurology* 1995;45:182-4.
- BEHNKE S, BERG D, BECKER G. Does ultrasound disclose a vulnerability factor for Parkinson's disease? *J Neurol* 2003; 250:124-7.
- BERG D, BECKER G, ZEILER B, *et al.* Vulnerability of the nigrostriatal system as detected by transcranial ultrasound. *Neurology* 1999;53:1026-31.
- BUDIŠIĆ M, LOVRENČIĆ-HUZJAN A, TRKANJEC Z, LISAK M, KESIĆ M, VUKOVIĆ V, DEMARIN V. Transcranial sonography can discriminate Parkinson's disease from other movement disorders. *Acta Clin Croat* 2005;44:259-63.
- BOGH DAN U, BECKER G, WINKLER J, GREINER K, PEREZ J, MEURERS B. Transcranial color-coded real time sonography in adults. *Stroke* 1990;21:1680-8.
- SEIDL G, KAPS M, GERRIETS T, HUTZELMANN A. Evaluation of ventricular system in adults by transcranial duplex sonography. *J Neuroimaging* 1995;5:105-8.
- ALEXANDROV A, DEMARIN V. Insonation techniques and diagnostic criteria for transcranial Doppler sonography. *Acta Clin Croat* 1999;38:97-108.
- RUNDEK T, DEMARIN V, LOVRENČIĆ M. Transcranial Doppler diagnostic criteria in the evaluation of arteriovenous malformations. *Neurol Croat* 1991;40:259-67.
- FAHN S, ELTON RL, members of the UPDRS Development Committee. Unified Parkinson's disease rating scale. Recent developments in Parkinson's disease II. New York: McMillan, 1987:153-63.
- DANIEL SE, LEES AJ. Parkinson's Disease Society Brain Bank, London: overview and research. *J Neural Transm* 1993;39:165-72.
- DEUSCHL G, BAIN P, BRIN M. Consensus statement of the Movement Disorder Society on Tremor. *Ad Hoc Scientific Committee. Mov Disord* 1998;133:2-23.
- DEWEY RB. Management of motor complications in Parkinson's disease. *Neurology* 2004;62:S3-S7.
- WALTER U, NIEHAUS L, PROBST T, BENECKE R, MEYER BU, DRESSLER D. Brain parenchyma sonography discriminates Parkinson's disease and atypical parkinsonian syndromes. *Neurology* 2003;60:74-7.
- SEIDLER A, HELLENBRAND W, ROBBA BP, VIERGE P, NISHAN P, JOERG J, OERTEL W, ULM G, SCHNEIDER E. Possible environmental, occupational and other etiologic factors for Parkinson's disease: a case control study in Germany. *Neurology* 1996;46:1275-84.
- VIERGE P. Genetic factors in the etiology of idiopathic Parkinson's disease. *J Neural Transm* 1994;8:1-37.
- BERG D, RUGGENDORF W, SCHRODER U, *et al.* Echogenicity of the substantia nigra: association with increased iron content and marker for susceptibility to nigrostriatal injury. *Arch Neurol* 2002;56:999-1005.
- BERG D, MERZ B, REINERS K, NAUMANN M, BECKER G. Five-year follow-up study of hyperechogenicity of the substantia nigra in Parkinson's disease. *Mov Disord* 2005;20:383-5.
- JENNER P, DEXTER DT, SIAN J, SCHAPIRA AHV, MARSDEN CD. Oxidative stress as a cause of nigral cell death

- in Parkinson's disease and incidental Lewy body disease. *Ann Neurol* 1992;32:82-7.
23. GERLACH M, DOUBLE K, RIEDERER P, *et al.* Iron in the parkinsonian substantia nigra. *Mov Disord* 1997;12:258-60.
24. SCHAPIRA A. Etiology of Parkinson's disease. *Neurology* 2006; 66:S10-S23.

Sažetak

TRANSKRANIJSKI ULTRAZVUK KOD POREMEĆAJA KRETANJA

M. Budišić, A. Lovrenčić-Huzjan, V. Vuković, J. Bošnjak, Z. Trkanjec, A. Aleksić-Shibabi i V. Demarin

Metode slikovnog prikaza mozga su kod većine poremećaja kretanja nespecifične te se dijagnosticiranje takvih poremećaja većinom temelji na kliničkom pregledu. Dok u 90% zdravih pojedinaca supstancija nigra (SN) prikazuje urednu ehogenost (<0,20 cm²), u većine bolesnika s Parkinsonovom bolešću (PB) transkranijском sonografijom (TCS) se bilježi povećanje njene ehogenosti. Cilj studije bio je ispitati mogućnosti razlikovanja bolesnika s PB i bolesnika s esencijalnim tremorom (ET) pomoću transkranijског mjerenja SN. Pregled je učinjen standardiziranom metodom; SN je prikazana, obilježena te dva puta izmjerena. Izračunata je srednja vrijednost. Primijenjen je Mann-Whitney U-test i Kruskal Wallis test za usporedbu između skupina. Istraživanje je provedeno u 50 bolesnika s PB, 20 bolesnika s ET te 50 zdravih kontrolnih osoba. Kao granica vrijednosti prema hiperehogenom prikazu primijenjena je vrijednost od 0,20 cm². Bilateralna hiperehogenost nađena je kod 88% bolesnika s PB, 20% bolesnika s ET i 14% kontrolnih osoba. Rezultati su pokazali statistički značajnu razliku u veličini ehogenosti SN između bolesnika s PB i ET ($p < 0,001$), kao i razliku između bolesnika s PB i kontrolne skupine ($p < 0,001$), ali ne i značajnu razliku između kontrolne skupine i skupine bolesnika s ET ($p = 0,240$). Zaključeno kako je povećana ehogenost SN na TCS specifičan nalaz Parkinsonove bolesti. Mjerenje veličine SN pomoću TCS omogućuje razlikovanje bolesnika s Parkinsonovom bolešću od bolesnika s esencijalnim tremorom.

Ključne riječi: *Parkinsonova bolest – dijagnostika; Parkinsonova bolest – ultrazvuk; Supstancija nigra – ultrazvuk; Ultrazvuk, Dopplerov – transkranijски*