

A NOVEL TECHNIQUE FOR REAL TIME IMPLEMENTATION OF SHE PWM IN SINGLE PHASE MATRIX CONVERTER

P. Subha Karuvelam, M. Rajaram

Original scientific paper

In this paper, a real time implementation of selective harmonic elimination pulse width modulation (SHEPWM) using a new technique known as Linearization Method for single phase Matrix converter (SPMC) is designed and discussed. SHEPWM for SPMC is designed using Real coded genetic algorithm (RGA), particle swarm optimization (PSO) and firefly algorithm (FFA). From the switching angle trajectory of these techniques, the trajectory of LM is designed. In the proposed technique, the optimum switching angles are obtained using simple mathematical calculations. A MATLAB simulation was carried out and FFT analysis of the simulated output voltage waveform confirms the effectiveness of the proposed method. An experimental setup was also developed and the switching angles and firing pulses are generated using Field Programmable Gate Array processor. The proposed method proves that it is much applicable in the industrial applications by virtue of its suitability in real time applications.

Keywords: Particle Swarm Optimization; Real Coded Genetic Algorithm; Selective Harmonic Elimination Pulse Width Modulation; Single Phase Matrix Converter

Nova metoda za implementaciju SHE PWM u stvarnom vremenu za jednofazni matični pretvarač

Izvorni znanstveni članak

Predmet ovoga rada je dizajniranje i rasprava o implementaciji SHEPWM (Selective Harmonic Elimination Pulse Width Modulation) u stvarnom vremenu uz primjenu nove metode poznate kao Metoda linearizacije za jednofazni matični pretvarač (Single Phase Matrix Converter - SPMC). SHEPWM za SPMC dizajniran je primjenom Real coded genetic algoritma (RGA), optimizacije roja čestica (PSO) i firefly algoritma (FFA). Iz putanje prespojnih kutova tih tehnika, dizajnira se LM putanja. U predloženoj metodi, optimalni prespojni kutovi se dobivaju jednostavnim matematičkim izračunima. Provedena je MATLAB simulacija i FFT analiza simuliranog valovitog gibanja izlaznog napona potvrđuje učinkovitost predložene metode. Razvijen je i eksperimentalni postav a prespojni kutovi i impulsi paljenja razvijeni su pomoću Field Programmable Gate Array procesora. Predložena metoda dokazuje da se može uvelike rabiti u industrijskim primjenama zbog njene prikladnosti za primjene u stvarnom vremenu.

Ključne riječi: jednofazni matični pretvarač; optimizacija roja čestica; Real Coded Genetic Algoritam; Selective Harmonic Elimination Pulse Width Modulation

1 Introduction

Single phase Matrix converter was first implemented by Zuckerberge in 1997 [1]. This converter can be functioned as generalised converter in other words as AC inverter, DC-DC chopper, AC-DC converter, AC-AC voltage controller and frequency controller [2÷5]. The typical applications of SMPC include single phase induction motor drive [6], radio frequency resonant heating with unity power factor and sinusoidal input current [7, 8], audio power amplification [9], and voltage compensation for sag and swell and to eliminate the harmonic content [10]. For all the applications, the output voltage provided by the SPMC must meet the limitations on individual harmonics components as per EN 50160. In the conventional SMPC, the output voltage is less than the input ac voltage. The Z source concept was introduced to SMPC to provide the wide range of output ac voltage in buck-boost mode with step up/down frequency. Such converter is known as Z source buck-boost matrix converter [11÷14].

The common control technique for SMPC is based on high frequency carrier based PWM. The PWM technique offers good performance using high switching frequency and it leads to high switching losses and electromagnetic interferences which result in high dv/dt . This PWM technique is not applicable for the system in which switching losses are intolerable. To overcome these problems, fundamental switching frequency PWM techniques are preferred. The most commonly used fundamental switching frequency PWM technique is

selective harmonic elimination (SHE) method [15, 16]. The main goal of SHE technique is to compute the optimized switching angles to reach the desired fundamental value and to eliminate the lower order harmonics. The defined objective function of a SHE method is a set of nonlinear transcendental equations with trigonometric terms which results in multiple solutions. Some of the traditional methods for solving the transcendental equations are Newton-Raphson method, resultant theory and theory of symmetrical polynomial technique. The Newton-Raphson method is numerical iterative method which requires good initial guess of solutions that are close to the exact solution. In resultant theory method and theory of symmetrical polynomial technique, the transcendental equations are converted into polynomial equations. When the order of the transcendental equations increases, the resultant polynomials become quite complex and it increases the complexity of the calculation. Recently non-traditional methods based on evolutionary algorithms such as genetic algorithms (GA), particle swarm optimization (PSO), bee colony optimization (BCO) have been employed for SHE problem [17÷19]. Hopfield neural network based approach was also used to solve the SHEPWM problem [20].

In Selective harmonic mitigation (SHMPWM), the selected harmonic contents are restricted within the values specified by grid codes EN50160 and CIGRE WG 36-05 [21]. In SHEPWM for N switching angles, $N-1$ number of harmonics can be eliminated but in SHMPWM, N^2

number of harmonics can be limited within the values specified by any grid code.

In this paper, SHEPWM for SPMC using RGA, PSO and FFA are also designed. The switching angles are obtained in offline using the optimization techniques due to their long convergence time and hence not applicable for real time applications. The objective of this paper is to design a method for real time implementation of SHEPWM in SPMC. From the switching angle trajectory of RGA, PSO and FFA, the trajectory of the proposed technique called as Linearization method (LM) is designed. The fundamental voltage, THD and the harmonic content of the proposed technique is compared with RGA, PSO and FFA and the results are compared and tabulated.

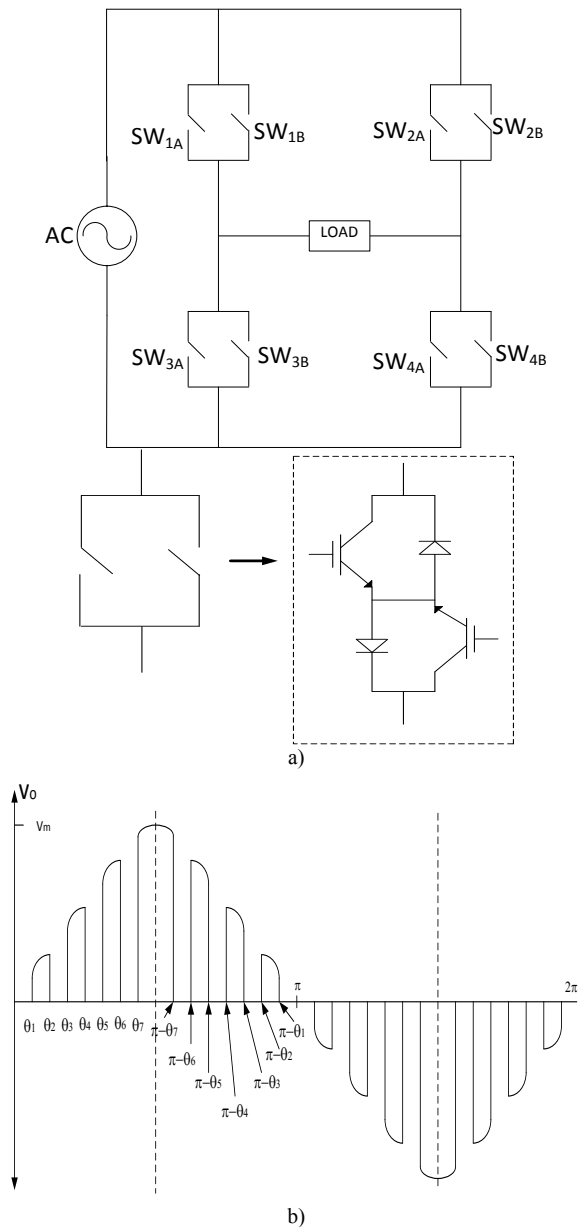


Figure 1 a) Circuit diagram of single phase matrix converter; b) Synthesized output voltage (50 Hz) of SPMC

2 Circuit analysis

The SPMC consists of four switches SW₁, SW₂, SW₃, SW₄ as illustrated in Fig. 1a. Bidirectional power flow in

AC to AC converter demands the bidirectional switches that are capable of blocking voltages in both polarity and conduction of current in both directions. A discrete semiconductor fulfilling these requirements is not available in practice and hence an antiparallel IGBT, diode pair is used here. Theoretically the switching is simultaneous and instantaneous. In real time the finite switching times and delays in the circuit are taken into account.

The input and the output voltages are given by

$$v_i(t) = \sqrt{2}V_i \sin \omega_i t \tag{1}$$

$$v_o(t) = \sqrt{2}V_o \sin \omega_o t \tag{2}$$

$$v_o(t) = Ri_o + L \frac{di_o(t)}{dt} \tag{3}$$

The switching sequence for the output frequency of 50 and 100 Hz are summarized in Tab. 1. At any time *t* two switches are ON.

Fig. 1b shows the ideal synthesized output voltage waveform of single phase matrix converter with the output frequency of 50 Hz. The waveform possesses *N* switching angles between 0 and $\frac{\pi}{2}$. Since the square wave symmetry is preserved in the waveform, all the even harmonics are eliminated and odd harmonics alone present in the output. Among the *N* switching angles, one angle is used for the control of fundamental voltage and *N*-1 switching angles for the elimination of *N*-1 selected lower order harmonics. In this paper seven switching angles are generated.

Table 1 Switching sequences

<i>f_o</i>	Mode	Interval	Switching State
50	1	Duty	SW _{1A} & SW _{4A}
		Free wheeling	SW _{3B} & SW _{4A}
	2	Duty	SW _{1B} & SW _{4B}
		Free wheeling	SW _{3A} & SW _{4B}
100	1	Duty interval	SW _{1A} & SW _{4A}
		Free wheeling	SW _{3B} & SW _{4A}
	2	Duty	SW _{2A} & SW _{3A}
		Free wheeling	SW _{2A} & SW _{1B}
	3	Duty	SW _{2B} & SW _{3B}
		Free wheeling	SW _{3B} & SW _{4A}
	4	Duty	SW _{1B} & SW _{4B}
		Free wheeling	SW _{3A} & SW _{4B}

3 Formulation of transcendental equations

The Fourier series expansion of output voltage is

$$V_o = V_m \sum_{n=1}^{\infty} (A_n \sin(n\omega t) + B_n \cos(n\omega t)) \tag{4}$$

where *A_n* and *B_n* are the Fourier coefficients; *n* is the order of the harmonic; *V_m* is the peak value of the output voltage.

The fundamental coefficients *A₁* and *B₁* are expressed as

$$A_1 = \frac{1}{2\pi} \left[\sum_{i=1,2}^N \left((-1)^i \left(\alpha_i \frac{\sin 2\alpha_i}{2} \right) \right) \right] \tag{5}$$

$$B_1 = \frac{1}{2\pi} \left[\sum_{i=1,2}^N \left((-1)^{i+1} \left(\frac{\cos 2\alpha_i}{2} \right) \right) \right] \tag{6}$$

The fundamental coefficients *A_n* and *B_n* are expressed as

$$A_n = \frac{1}{2\pi} \left[\sum_{i=1,2}^N \left((-1)^i \left(\frac{\sin(1-n)\alpha_i}{1-n} - \frac{\sin(1+n)\alpha_i}{1+n} \right) \right) \right] \quad (7)$$

$$B_n = \frac{1}{2\pi} \left[\sum_{i=1,2}^N \left((-1)^{i+1} \left(\frac{\cos(1-n)\alpha_i}{1-n} - \frac{\cos(1+n)\alpha_i}{1+n} \right) \right) \right] \quad (8)$$

The output voltage is articulated as

$$V_0 = V_m \sum_{n=1}^{\infty} C_n [\sin(n\theta + \phi_n)] \quad (9)$$

where $C_n = \sqrt{(A_n)^2 + (B_n)^2}$ and $\phi_n = \tan^{-1} \left(\frac{B_n}{A_n} \right)$.

Let $F(\alpha)$ be the objective function to be minimized and is defined as

$$F(\alpha_1, \alpha_2, \alpha_3 \dots \alpha_N) = (C_1 - MI)^2 + C_3^2 + C_5^2 + \dots + C_{2N-1}^2 \quad (10)$$

with the constrain

$$0 \leq \alpha_1 \leq \alpha_2 \dots \dots \leq \alpha_N \leq \frac{\pi}{2}$$

where modulation index $MI = \frac{V_{o1RMS}}{V_{iRMS}}$.

The objective function $F(\alpha)$ is minimized subject to the condition in Eq. (10). Hence the desired output voltage is regulated over the range 0 to V_m by changing the modulation index and selected harmonics up to 13th order are eliminated.

4 Real coded genetic algorithm

Genetic algorithm is inherently parallel because of simultaneous evaluation of many points in search space. Hence GA has reduced chance of converging to local optima and more chance to converge in global optima [14]. Initially GA was designed to operate with binary codes. Now RGA is used due to their supreme behaviour such as reduced computational effort, absolute precision etc. The steps involved in RGA based approach are illustrated.

Step 1: Random generation of initial population

Generating N switching angles is the solution to this problem. Each switching angle is a gene represented by real numbers. There are N genes in each chromosome. Each chromosome represents the solution to the problem. Population consists of sets of chromosomes. Population is initialized with random number between 0 and $\frac{\pi}{2}$.

Step 2: Evaluation of fitness function

The objective function in this study is to minimize the selected harmonics hence fitness function has to be minimized. Since all the optimization techniques are used only for maximization problem the fitness function is modified as below

$$FN = \frac{1}{1+f(\alpha)} \quad (11)$$

Fitness of each chromosome is computed.

Step 3: Generation of off spring

Offspring is a new (Child) chromosome. From the fitness value of each chromosome the best parents are

selected for reproduction. Tournament selection is used as selection mechanism in this work to avoid premature convergence. The selected parents are subjected to Simulated Binary Crossover (SBX) and polynomial mutation. Self-adaptive simulated binary crossover based RGA was successfully applied to various engineering optimization problems [15].

Simulated binary Crossover

In SBX crossover, two children solution $y_i^{(1)}$ and $y_i^{(2)}$ are wrought from the parent solution $x_i^{(1)}$ and $x_i^{(2)}$. The SBX operator simulates the working principle of single point crossover on binary strings.

$$y_i^{(1)} = 0,5 [(1 - \beta_i)x_i^{(1)} + (1 + \beta_i)x_i^{(2)}] \quad (12)$$

$$y_i^{(2)} = 0,5 [(1 + \beta_i)x_i^{(1)} + (1 - \beta_i)x_i^{(2)}] \quad (13)$$

The spread factor β is defined as the ratio of absolute difference in offspring values to that of parents' values.

$$\beta = \left| \frac{y_i^{(1)} - y_i^{(2)}}{x_i^{(1)} - x_i^{(2)}} \right| \quad (14)$$

Polynomial probability Distribution

$$P(\beta) = 0,5(n_c + 1)\beta^{n_c} \text{ if } \beta < 1 \\ = 0,5(n_c + 1) \frac{1}{\beta^{n_c+2}} \text{ otherwise} \quad (15)$$

n_c is a nonnegative real number known as crossover distribution index represents the distance of the children from the parent.

$$\int_0^{\beta_i} P(\beta) d\beta = u_i \text{ where } u_i \in [0,1] \quad (16)$$

4.1 Non-uniform polynomial mutation

Newly generated offspring undergoes polynomial mutation operation to create mutated offspring. New offspring y_i is determined using

$$y_i = x_i + (x_i^U - x_i^L)\delta_i \quad (17)$$

where x_i^U and x_i^L are the upper and lower limit values. δ_i is calculated from the polynomial probability distribution. The function is given by

$$P(\delta_i) = 0,5(n_m + 1)(1 + |\delta|)^{n_m} \quad (18)$$

$$\delta = \begin{cases} (2r_i)^{\frac{1}{n_m+1}} - 1 & \text{if } r_i < 0,5 \\ 1 - [2(1 - r_i)]^{\frac{1}{n_m+1}} & \text{if } r_i \geq 0,5 \end{cases} \quad (19)$$

n_m is the mutation distribution index/mutation constant and random number $r_i \in [0,1]$. Newly generated offspring will become the population for the next generation. The procedure is repeated from step 2 till the stopping criterion is reached. The parameters used in the algorithm are given in Tab. 2.

4.2 Stopping criteria

The algorithm stops when any one of the following conditions occurs:

- 1) The number of iterations performed by the algorithm reaches the value of the maximum iteration.
- 2) The total number of objective function evaluations performed by the algorithm reaches the value of maximum evaluation.
- 3) The change in the objective function from one generation to the next successful poll is less than the objective function tolerance.

5 Particle Swarm Optimization (PSO)

PSO is a population based stochastic optimization technique developed by Eberhart and Kennedy inspired by social behaviour of bird flocking and fish schooling. The steps involved in PSO algorithm are given below.

Step 1: Random generation of initial population:

It begins with the initialization of particle position (switching angles) between 0 to $\frac{\pi}{2}$ and velocities in N dimensional space.

Step 2: Evaluation of fitness function:

In each iteration, the particle moves according to the velocity and changes its position. The fitness function is evaluated for each particle.

Step 3: Setting Pbest and Gbest:

The best position reached among the particles during their search is the particle best (Pbest). The best fitness value reached by the particle in all the searches is the Global best (Gbest).

Step 4: Update the velocity and position of each particle:

Let V_i and X_i represent the velocity and position of i^{th} particle. The velocity and position of each particle is updated as given below

$$V_i^{k+1} = \omega^k V_i^k + C_1 r_1 (Pbest_i^k - X_i^k) + C_2 r_2 (Gbest_i^k - X_i^k) \tag{20}$$

$$X_i^{k+1} = X_i^k + V_i^{k+1} \tag{21}$$

$$\omega^k = \omega_{max} - \frac{\omega_{max} - \omega_{min}}{iter_{max}} K \tag{22}$$

where ω^k – Inertia weight at iteration k , V_i^k – Velocity of i^{th} particle at iteration k , C_1 and C_2 – Acceleration factors, r_1 and r_2 – Uniform random numbers $\in [0,1]$, $Pbest_i^k$ - Best position of i^{th} particle at iteration k , X_i^k – Position of i^{th} particle at iteration k , $Gbest_i^k$ – Best position of the group till iteration k , ω_{max} and ω_{min} are initial and final weights, $iter_{max}$ – total number of iterations.

Table 2 Parameters used in GA and PSO

Genetic algorithm	PSO
No of runs = 10	No of runs = 10
Switching angles = 7	Switching angles = 7
Population size = 100	Population size = 100
SBX crossover constant $n_c = 2$	Acceleration constants C_1 and $C_2 = 1$
Mutation constant $n_m = 20$	Maximum generation = 100
Maximum generation = 100	

The procedure is repeated from step 2 till the stopping criterion is reached. The stopping criteria of GA are

applicable to PSO also. The parameters used in PSO algorithm are shown in Tab. 2.

6 Firefly Algorithm (FFA)

Firefly algorithm was first developed by Xin-She Yang in 2007 inspired by the flashing patterns and firefly communication via luminescent flashes in search for food. For simplicity, FA uses the following three rules:

- 1) Fireflies are unisex so that a firefly will be attracted by other fireflies regardless of their sex.
- 2) The attractiveness is proportional to the brightness and the less bright firefly will move towards the brighter one. The attractiveness and brightness will decrease as the distance between fireflies increases. If there is no brighter one than particular firefly, the brightest firefly will move randomly.
- 3) The brightness of a firefly is affected or determined by the landscape of the objective function to be optimized.

In FA, the attractiveness of the firefly is determined by its brightness which is equal to the objective function.

The FA is executed as follows:

Step1: Initialize the algorithm parameters.

Population of fireflies = 25.

(Best range is 25 to 40 [24])

Maximum attractiveness $\beta_0 = 1$

Light absorption coefficient $\gamma = 1/\sqrt{L}$

Maximum Value of $x_i^{max} = 90$

Minimum Value of $x_i^{min} = 0$

Scaling factor $L(x_i^{max} - x_i^{min}) = 90$

Randomization parameter $\alpha = \alpha_0 \delta$

Initial Randomization parameter $\alpha_0 = 0,01L$

Cooling factor $\delta = 0,96$

No. of iterations = 100

Number of dimension (switching angles) = 7

Initial populations of individuals are randomly initialized over the entire search space as

$$x_i = x_i^{min} + rand(x_i^{max} - x_i^{min}) \tag{23}$$

Step 2: Compute the brightness of each firefly

The brightness of each firefly is determined by the objective function according to Eq. (11). The brightest firefly is chosen as global optimum.

Step 3: Obtain the attractiveness of each firefly

The attractiveness of individual firefly varies with the distance r is given as

$$\beta = \beta_0 e^{-\gamma r^2} \tag{24}$$

The brightest firefly is the potential optimum for that individual firefly. The potential optimum need not be the global optimum. The less bright firefly i will move towards its potential optimum firefly j according to

$$x_i^{t+1} = x_i^t + \beta_0 e^{-\gamma r^2} (x_j - x_i) + \alpha (rand - 0,5) \tag{25}$$

The last term is a randomization term whereas the second term is due to the attraction of x_i towards x_j . The brightest firefly will move randomly.

7 Proposed linearization technique

In SHE elimination initially the objective function is formulated and the formulated function is solved either using conventional techniques or any one of the optimization techniques. In both the techniques the switching angles are derived in offline. The convergence times of RGA, PSO and FFA are 1,4e4, 1,07e4 and 5,3e3 for 100 iterations (generations) respectively. Due to this large convergence time, they are not applicable for real time implementation. The proposed linearization method overcomes these drawbacks.

The proposed algorithm is applicable for the system in which switching losses are intolerable and can tolerate the harmonics to a certain extent. In this technique, the objective function is not needed. From the switching angle trajectory of RGA, PSO and FFA, it is observed that the variation of switching angles is linear irrespective of number of angles [18]. Due to the linearity nature, the switching angles are derived using formula as given below.

Let the number of switching angles N be 3.

$$X_{1min} = 0 \text{ and } X_{3max} = 90 \tag{26}$$

$$X_{1max} = \frac{90}{\left(\frac{N+1}{2}\right)} \tag{27}$$

$$X_{2min} = X_{1max} \text{ and } X_{3min} = X_{2max} \tag{28}$$

$$X_{2max} = X_{2min} + \frac{X_{1max}}{2} \tag{29}$$

In general,

$$X_{Nmin} = X_{N-1max} \tag{30}$$

$$X_{N-1max} = X_{N-2min} + \frac{X_{1max}}{2} \tag{31}$$

For any modulation index MI and switching angle N

$$X_N = \begin{cases} X_{1max} - \left(X_{1max} * \frac{MI}{2}\right) & N - \text{Odd} \\ X_{2min} + \left(X_{1max} * \frac{MI}{2}\right) & N - \text{Even} \end{cases} \tag{32}$$

This technique can be extended for any number of switching angles and the modulation index can be changed in real time.

Table 3 Comparison of THD and Harmonic Contents for different MI using RGA, PSO and FFA

MI	Tech	THD	Fundamental		Harmonic voltage in %					
			RMS	Peak	H3	H5	H7	H9	H11	H13
Harmonic limit as per EN 50 160					5	6	5	1,5	3,5	3
0,1	RGA	276,5	7,21	10,2	9	8	9,5	8,9	3	0,3
	PSO	273,48	7,27	10,28	5,1	3,1	5,1	1,9	4,4	0
	FFA	285,13	7,16	10,12	1,1	1,6	0,32	1,13	2,41	2,36
0,2	RGA	186,76	14,28	20,2	0,35	1,5	3,95	1,2	2,1	3,4
	PSO	181,06	14,24	20,13	0,9	1,05	1,25	0,55	1,1	0,75
	FFA	178,65	14,24	20,13	0,28	0,62	1,28	1,95	1,03	0,34
0,3	RGA	147,85	21,79	30,82	3,00	3,50	4,17	1,83	3,67	2,50
	PSO	140,88	21,29	30,1	1,30	2,47	12,50	8,70	3,77	1,13
	FFA	140,18	21,28	30,09	0,35	0,31	0,46	1,01	0,98	1,34
0,4	RGA	113,9	28,58	40,41	3,25	2,17	1,25	1,75	2,42	2,83
	PSO	110,6	28,46	40,24	1,58	1,73	2,08	2,80	2,80	4,05
	FFA	110,91	28,45	40,23	0,56	0,29	0,28	0,36	0,61	0,99
0,5	RGA	91,23	35,47	50,16	0,16	0,52	0,98	0,40	0,88	0,52
	PSO	92,46	35,59	50,33	1,28	1,18	0,64	0,22	0,18	0,40
	FFA	87,93	35,44	50,11	0,29	0,35	0,42	0,56	0,98	0,52
0,6	RGA	73,52	42,72	60,41	0,22	0,67	0,27	0,77	0,45	0,87
	PSO	74,55	42,61	60,25	0,15	0,18	1,03	0,64	0,42	0,25
	FFA	70,55	42,50	60,09	0,22	0,46	0,26	0,29	0,31	0,39
0,7	RGA	57,24	50,11	70,86	0,23	0,14	0,31	0,49	0,47	0,17
	PSO	58,37	49,60	70,14	0,31	0,31	0,17	0,27	0,56	0,73
	FFA	51,47	49,58	70,10	0,21	0,65	0,83	0,31	0,43	0,67
0,8	RGA	42,54	56,50	79,90	0,49	0,30	0,20	0,20	0,60	0,13
	PSO	41,10	57,14	80,80	0,31	0,35	0,29	0,34	0,45	0,20
	FFA	41,32	56,65	80,10	0,39	0,30	0,12	0,35	0,25	0,11
0,9	RGA	22,27	63,96	90,44	0,16	0,17	0,64	2,06	0,17	0,26
	PSO	23,84	63,50	89,79	0,11	1,37	0,03	0,29	0,84	0,92
	FFA	23,26	63,72	90,10	0,91	0,29	0,65	0,16	0,17	0,52

8 Results and discussion

To verify and validate the algorithms, programs are developed in MATLAB mfile code. The programs are run in Pentium-V computer operating at 1,4 GHz clock speed. The single phase matrix converter is realized in MATLAB/Simulink environment with the following

parameters $V_i = 100 \text{ V}$, $R = 30 \ \Omega$, $f_{in} = 50 \text{ Hz}$, $f_{out} = 50 \text{ Hz}$.

Tab. 3 shows the harmonic contents of the order 3 to 13 for various modulation index in RGA, PSO and FFA. The required fundamental voltage is obtained in all the techniques. The error between the fundamental and actual voltage is lower in FFA than that of other algorithms. The

harmonic contents in most of the MI are very low in FFA than others. The reason may be due to the following reasons

- 1) In GA, there is no straight forward method to determine the population size, mutation probability and crossover probability.
- 2) PSO uses nonlinear updating equations whereas FA uses linear updating equations.

Fig. 2 shows the switching angle trajectory of GA, PSO, FFA and LM. The trajectories are almost linear. Fig. 3 shows the harmonic spectrum obtained using RGA, PSO, FFA and LM. It shows that 3rd, 5th, 7th, 9th, 11th and 13th harmonics are less than the specified limit. Fig. 4 shows the output voltage and harmonic spectrum in hardware which proves the algorithm is applicable for real time implementation. Fig. 5 shows the experimental setup

of selective harmonic elimination of single phase matrix converter. The switching angles are derived using FPGA SPARTAN 3E kit. When the required modulation index is given, the FPGA controller calculates the switching angles and generates the required firing pulses for single phase matrix converter.

Tab. 4 shows the comparison of various components using LM in simulation and hardware

- 1) The input frequency in simulation is 50 Hz. In real time the input frequency is 49,97 Hz.
- 2) The switching angle decimal accuracy in simulation is four digits but in real time it is two digits.

Table 4 Comparison of various components using LM in simulation and hardware

	MI=0,9		MI=0,8		MI=0,7		MI=0,6		MI=0,5		MI=0,4		MI=0,3		MI=0,2		MI=0,1	
	H/W	Sim	H/W	Sim	H/W	Sim	H/W	Sim	H/W	Sim	H/W	Sim	H/W	Sim	H/W	Sim	H/W	Sim
H1	89,7	89,1	79,8	81,2	70,7	72,5	61,3	61,9	49,1	51,1	38,4	42,2	28,4	31,3	18,9	22,7	8,8	11,0
H3	1,82	1,75	1,66	1,4	1,52	1,2	1,36	1	1,03	0,8	0,9	0,6	0,41	0,5	0,63	0,3	0,41	0,3
H5	2,07	1,62	1,86	1,3	1,63	1,1	1,32	0,9	1,04	0,7	0,87	0,5	0,76	0,4	0,45	0,3	0,29	0,3
H7	1,34	1,44	1,32	1,4	1,05	0,5	1,08	0,2	0,7	0,2	0,7	0,3	0,44	0,7	0,42	0,7	0,46	0,3
H9	1,93	1,45	1,77	1,4	1,63	1,2	1,48	1	1,06	0,9	0,96	0,5	0,57	0,5	0,42	0,7	0,45	0,3
H11	1,55	1,26	1,07	0,9	1,08	0,6	0,74	0,3	0,54	0,1	0,67	0,1	0,47	0,2	0,42	0,2	0,34	0,2
H13	1,36	1,28	1,69	0,9	1,61	0,6	1,52	0,3	1,33	0,1	1,22	0,3	0,74	0,2	0,83	0,3	0,41	0,3

H/W - Hardware; Sim - Simulation

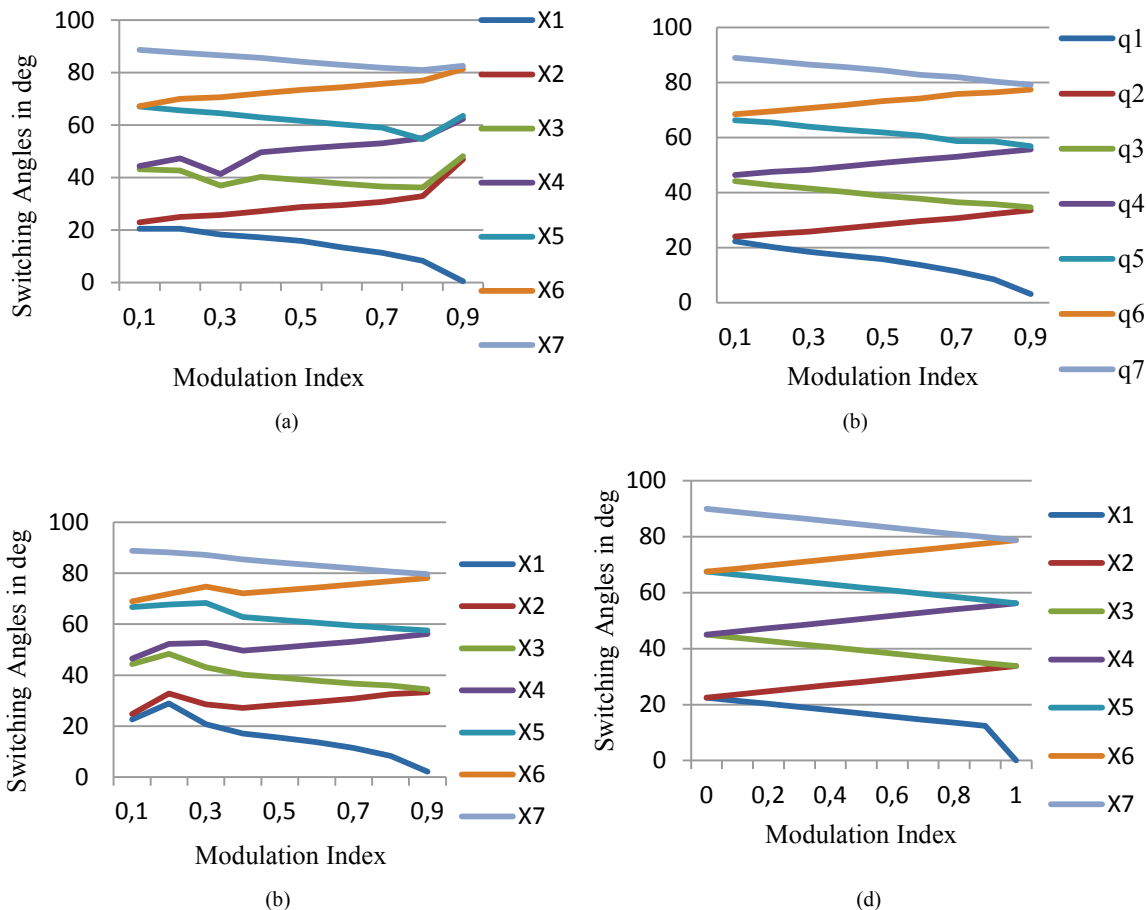


Figure 2 Switching angle trajectory of (a) RGA, (b) PSO, (c) FFA, (d) LM

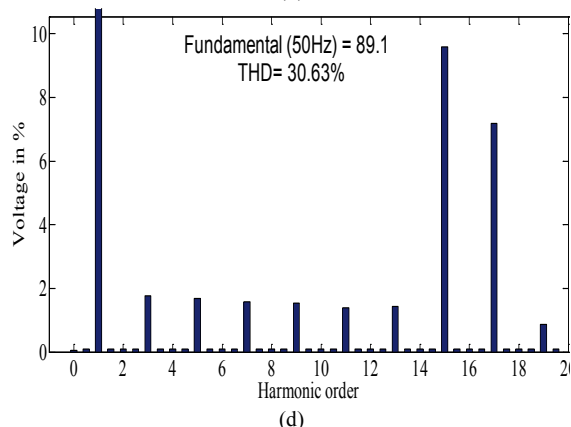
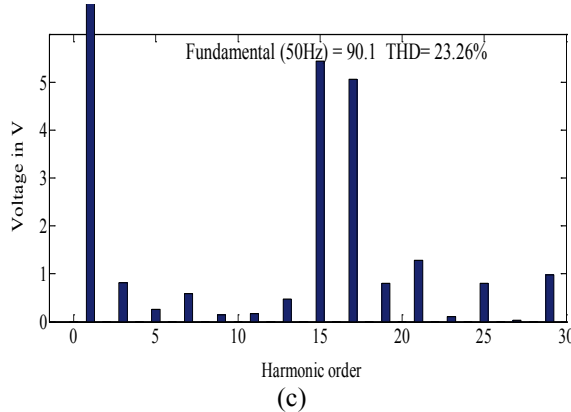
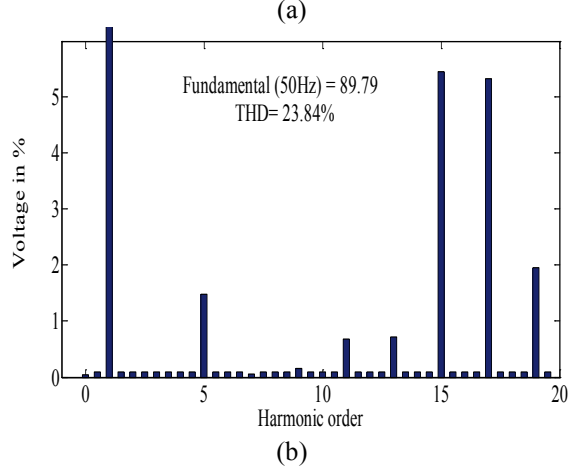
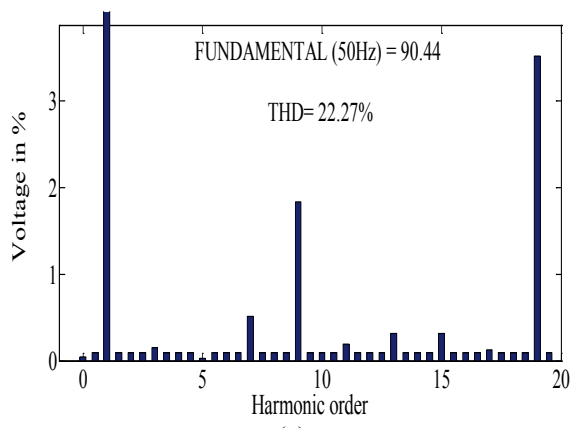


Figure 3 Harmonic spectrum of output voltage for MI=0,9 using (a) RGA, (b) PSO, (c) FFA, (d) LM

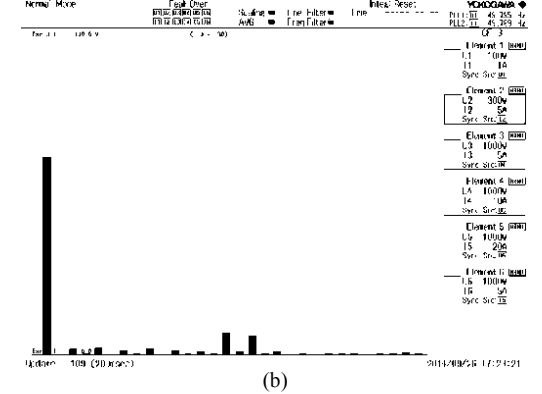
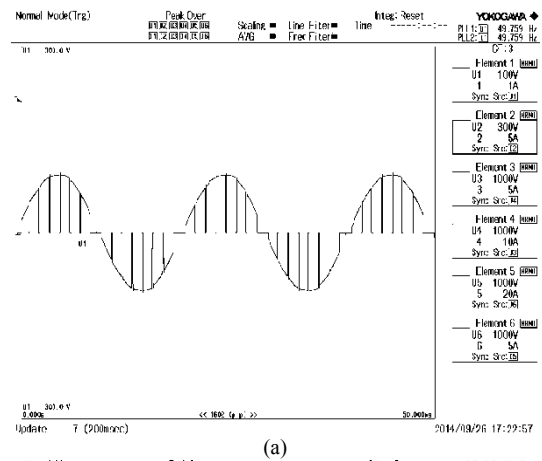


Figure 4 Output voltage and its harmonics spectrum for MI=0,9 using LM in hardware

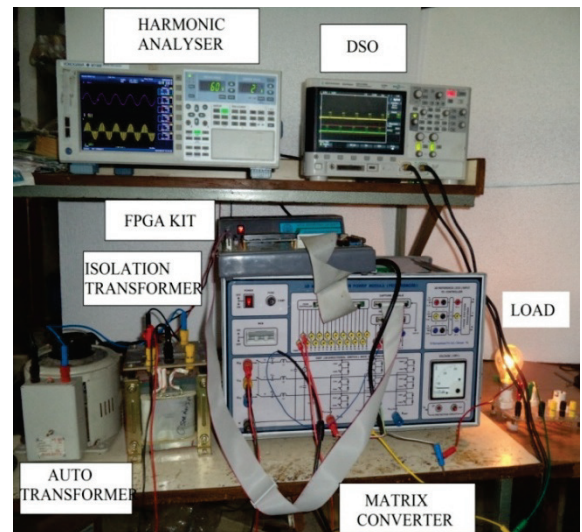


Figure 5 Experimental setup of SMPC

9 Conclusion

A new technique known as Linearization Method is proposed for SHE in single phase matrix converter in this paper. From the results it is concluded that

- 1) The proposed algorithm is applicable for the system in which switching losses are intolerable and can tolerate the harmonics to a certain extent. The switching frequency is the fundamental output frequency of the system.
- 2) In this technique, the objective function is not needed. Hence the proposed method provides an alternative to engineering optimization problems and

the optimum switching angles are derived using simple calculations.

- 3) The selected harmonics in LM is less than that of grid code EN50160.
- 4) This technique can be extended for N switching angles which eliminate $N-1$ selected harmonics for all modulation indexes.
- 5) This technique was implemented in hardware and is suitable for real time applications.

10 Reference

- [1] Zuckerberger, D.; Weinstock.; Aiexandrovitz, A. Single-phase matrix converter. // Proceedings of IEE Conference on Electric Power Applications. 144, 4(1997), pp. 235-240.
- [2] Noor, Mohammed; Zaliha, Siti; Hamzah, M. K.; Baharom, R. A new single-phase inverter with bidirectional capabilities using SPMC. // Proceedings of IEEE Conference on PESC, Orlando, 2007, pp. 464-470.
- [3] Baharom, R.; Hasim, A. S. A.; Hamzah, M. K.; Omar, M. F. A new single-phase controlled rectifier using SPMC. // Proceedings of IEEE Conference on Power Electronics, Putra Jaya, 2006, pp. 453- 458.
- [4] Baharom, R.; Hamzah, K. S.; Hamzah, M. K.; Muhammad. Boost Rectifier using SPMC. // Proceedings of IEEE Conference on Applied Electronics, Singaopre, 2008, pp. 2205-2210.
- [5] Baharom, R.; Hamzah, K. S.; Hamzah, M. K.; Saparon. SPMC operating as buck and boost rectifier. // Proceedings of IEEE Conference on Applied Electronics, Xi'an, 2009, pp. 3338-3342.
- [6] Sunter, S.; Aydogmus, O. Implemetation of a single phase matrix converter induction motor drive. // Journal of Electrical Engineering. 90, (2008), pp. 425-433. DOI: 10.1007/s00202-007-0093-z
- [7] Shenkman, A.; Axelrod, B.; Berkovich, Y. Single-switch AC-AC converter with high power factor and soft commutation for induction heating applications. // Proceedings of IEE Conference on Electr. Power Appl, 2001, pp. 469-474. DOI: 10.1049/ip-epa:20010610
- [8] Shenkman, A.; Axelrod, B.; Berkovich, Y. Improved modification of the single-switch AC-AC converter for induction heating applications. // Proceedings of IEE conference on Electr. Power Appln, 2004, pp. 1-4. DOI: 10.1049/ip-epa:20030766
- [9] Ljusev, P.; Andersen, M. A. E. Safe-commutation principle for direct single-phase ac-ac converters for use in audio power amplification, Proceedings of Nordic Workshop Power Ind. Electron, Trondheim, Norway, 2004.
- [10] Perez, J.; Cardenas, V.; Moran, L.; Nunez, C. Single-phase ac-ac converter operating as a dynamic voltage restorer (DVR). // Proceedings of IEEE Conference on IECON'06, Paris, 2006, pp. 1938-1943. DOI: 10.1109/iecon.2006.347637
- [11] Xupeng, Fang; Maoyong, Cao; Chunjie, Li. Single-phase Z-source matrix converter. // Proceedings of ICEMS, Incheon, 2010, pp. 107-111.
- [12] Nishanthi, S.; Kumar, N. S. Design and Simulation of single phase Z-source buck boost matrix converter. // Proceedings of International conference on Computing, Electronics and Electrical Technologies, Kumarakoil, 2012, pp. 186-192. DOI: 10.1109/icceet.2012.6203926
- [13] Minh-Khai, Nguyen; Young-Gook, Jung; Young-Cheol, Lim; Young-Min, Kim. A Single-Phase Z-Source Buck-Boost Matrix converter. // IEEE Transactions on Power Electronics. 25, 2(2009), pp. 453-462.
- [14] Gopi, A.; Saravanakumar, R. Single phase Z source matrix converter with high voltage gain. // International Journal of Engineering and Technology. 5, 1(2013), pp. 282-292.
- [15] Enjeti, P.; Lindsay, J. F. Solving Non-linear equation of harmonic elimination PWM in power control. // IEE Electronics Letters, 23, (1987), pp. 656-657. DOI: 10.1049/el:19870469
- [16] Chiasson, J. N.; Tolbert, L. M.; McKenzie, K. J.; Zhong, Du. A complete Solution to the Harmonic elimination Problem. // IEEE Transactions on Power Electronics. 19, 2(2004), pp. 491-499. DOI: 10.1109/TPEL.2003.823207
- [17] Al-Othman, A. K.; Ahamed, N. A.; Al-Kandari, A. M.; Ebraheem, H. K. Selective harmonic Elimination on PWM AC/AC voltage regulator using Hybrid RGA-PS approach. // International Journal of Electrical and Electronics Engineering. 1, 4(2007), pp 227-233.
- [18] Dahidah, M. S. A.; Rao, M. V. C. Hybrid Genetic Algorithm for selective harmonic elimination PWM AC/AC control. // Journal of Electrical Engineering. 89, 4(2007), pp. 285-291. DOI: 10.1007/s00202-006-0003-9
- [19] Khamsen, Wanchai; Aurasopon, Apinan; Sa-ngiamvibool, Worawar. Power factor improvement and voltage Harmonic reduction in PWM AC chopper using Bee Colony Optimization. // IETE Technical review. 130, 3(2013).
- [20] Anderson, J. A. An Introduction to Neural Networks, Prentice Hall of India, New Delhi, 1998.
- [21] Napoles, J.; Leon J. I.; Ramon, P.; Franquelo, L. G.; Aguirre, M. A. Selective harmonic Mitigation Technique for High-Power Converters. // IEEE Transactions on Industrial Electronics. 57, 7(2010), pp. 2315-2323. DOI: 10.1109/TIE.2009.2026759
- [22] Willuice Iruthayaraan, M.; Baskar, S. Evolutionary algorithm based design of multivariable PID controllers. // Expert Systems with applications. 36, (2009), pp 9159-9167. DOI: 10.1016/j.eswa.2008.12.033
- [23] Deb, K. Multi-objective optimization using evolutionary algorithms. Wiley, Chichester, U.K. 2001.
- [24] Xin-she, Yang. Cuckoo Search and Firefly Algorithm, Theory and Applications. // Studies in Computational Intelligence. Vol. 516, Springer, 2013.

Authors' Addresses

P. Subha Karuvelam

Government College of Engineering,
Tirunelveli, Tamil Nadu 627007, India
E-mail: subha@gcetly.ac.in

Dr. M. Rajaram, Vice Chancellor

Anna University,
Sardar Patel Road, Guindy, Chennai, Tamil Nadu 600025, India
E-mail: rajaramgct@rediffmail.co.in