

Polyphenols and β -glucan interactions through linear adsorption models

Petra Krivak^{1*}, Š. Ukić², Lidija Jakobek¹

¹Josip Juraj Strossmayer University of Osijek, Faculty of Food Technology Osijek, Franje Kuhača 20, HR-31000 Osijek, Croatia

²University of Zagreb, Faculty of Chemical Engineering and Technology Zagreb, Marulićev trg 19, HR-10000 Zagreb, Croatia

original scientific paper

DOI: 10.17508/CJFST.2016.8.2.05

Summary

The aim of this work was to obtain information about interactions between polyphenols and β -glucan through linear adsorption equilibrium models. Polyphenolic compounds can interact with various food ingredients such as carbohydrates, proteins and lipids and these interactions can affect polyphenol bioactivities. Interactions can be studied through the adsorption process at a constant temperature and adsorption isotherms can be obtained. In this work the interactions between polyphenols like gallic acid, cyanidin-3-galactoside and cyanidin-3-glucoside and β -glucan as a natural dietary fiber were studied through the Freundlich's, Langmuir's, Dubinin-Radushkevich's, Tempkin's and Hill's models. The adsorption was carried out through model solutions of different concentrations of polyphenols and β -glucan for 16 hours at 25 °C. After the adsorption, the unadsorbed polyphenols were separated from the adsorbed ones by ultrafiltration. Concentrations of the unadsorbed polyphenols were determined by the spectrophotometric Folin-Ciocalteu method for gallic acid, and the pH differential method for cyanidin-3-galactoside and cyanidin-3-glucoside. The results of adsorption isotherm parameters showed that adsorption between all polyphenols and β -glucan were physical, and all interactions were favored. Gallic acid showed the highest maximum adsorption capacity onto β -glucan. This study showed that information about interactions between polyphenols and dietary fibers can be obtained through the linear adsorption equilibrium isotherms.

Keywords: polyphenols, β -glucan, linear adsorption equilibrium models, interactions

Introduction

Polyphenols are secondary plant metabolites that can be classified into different groups like phenolic acids, flavonoids, stilbenes and lignans. Flavonoids can be divided into flavonols, flavones, isoflavones, flavanones, anthocyanidins and flavanols. These differences between polyphenol groups are made on the basis of different number of phenol rings and structural elements which they contain (Bravo, 1998; Manach et al., 2004).

Many studies have found that polyphenols showed numerous positive bioactivities (Camouse et al., 2005; Kampa et al., 2007; Pandey et al., 2009; Scalbert et al., 2005). Furthermore, polyphenols showed that they can interact with macromolecules like proteins, carbohydrates and lipids (Jakobek, 2015; Le Bourvellec, 2012). It has been shown that these interactions can affect the bioavailability of polyphenols (Palafox-Carlos et al., 2011).

The interest in the interactions between polyphenols and dietary fiber like β -glucan has increased recently. β -glucan is a natural dietary fiber, which belongs to polysaccharides, and it can be found in cereals, mushrooms, seaweed and yeast (Laroche et al., 2007). It showed many positive activities like lowering the cholesterol, it was found to be very successful in the diabetes treatment, antioxidant activity and others (Chen et al., 2008; Kofuji et al., 2012; Queenan et al., 2007).

Interactions can be interpreted by studying the adsorption processes at a constant temperature and their

linear adsorption models, which are called adsorption isotherms. Overall, from the parameters of linear adsorption models, information about the adsorption processes (interactions) could be obtained, like whether the adsorption is physical or chemical, are interactions favored, or if the adsorption is happening in a single layer or in multiple layers on the adsorbent surface. Also, the adsorption capacity can be determined from the experimental data (Foo et al., 2010).

The aim of this work was to obtain the information about interactions between polyphenols and β -glucan from barley through parameters of linear adsorption models like the Freundlich's, Langmuir's, Dubinin-Radushkevich's, Tempkin's and Hill's. The unadsorbed polyphenols in model solutions were measured with the spectrophotometric methods like the Folin-Ciocalteu method for gallic acid, and the pH differential method for cyanidin-3-galactoside and cyanidin-3-glucoside.

Materials and methods

Chemicals

The methanol (HPLC grade) was purchased from J. T. Baker (the Netherlands). Gallic acid monohydrate (398225 \geq 98%) and β -D-glucan from barley (G6513 \geq 95%) were purchased from Sigma-Aldrich (St. Louis, MO, USA), while cyanidin-3-O-galactoside chloride (ideain chloride - 0923 S \geq 97%) and cyanidin-3-O-glucoside chloride (kuromanin chloride - 0915 S \geq 96)

*Corresponding author: petra.krivak@ptfos.hr

were purchased from Extrasynthese (Genay, France). Sodium carbonate and potassium chloride were purchased from Gram-mol (Zagreb, Croatia). Folin-Ciocalteu reagents, sodium acetate trihydrate, sodium phosphate dodecahydrate and sodium dihydrogen phosphate dehydrate, which were used for phosphate buffer preparation, were purchased from Kemika (Zagreb, Croatia).

Standards preparation

The stock solutions of polyphenol standards were prepared in the concentration of 1000 mg/L for gallic acid, 485 mg/L for cyanidin-3-galactoside and 480 mg/L for cyanidin-3-glucoside in methanol. Polyphenol concentrations in model solutions were monitored by the calibration curves obtained by preparing different concentrations of standards from the stock solution. The dilutions for the gallic acid were 1, 10, 50, 100, 200, 500, and 1000 mg/L, for the cyanidin-3-galactoside and the cyanidin-3-glucoside 1, 10, 50, 100, and 200 mg/L. The calibration curves were constructed by the Folin-Ciocalteu method for gallic acid and the pH differential method for cyanidin-3-galactoside and cyanidin-3-glucoside. Prior to measurement, stock solutions were stored in a freezer at $-18\text{ }^{\circ}\text{C}$. β -glucan stock solution was prepared in the concentration of 190 mg/L in distilled water. The prepared stock solution of β -glucan was heated for 15 min at $80\text{ }^{\circ}\text{C}$ and stored in a refrigerator at $4\text{ }^{\circ}\text{C}$.

Spectrophotometric method for total polyphenols (Folin-Ciocalteu method)

Total polyphenols were determined by the Folin-Ciocalteu method (Singleton et al., 1999). 20 μL of polyphenol standard, 1580 μL of distilled water, 100 μL of the Folin - Ciocalteu reagent and 300 μL of Na_2CO_3 (200 g/L) were added into a glass tube. The solution was mixed in the vortex, incubated at $40\text{ }^{\circ}\text{C}$ for 30 min in the water bath, and the absorbance was measured at 765 nm against the blank solution (which contained 20 μL of distilled water instead of the prepared solution) with a UV-Vis spectrophotometer (Selecta, UV 2005, Barcelona, Spain). Gallic acid solutions were measured by applying the same procedure, the calibration curve was constructed and used for the calculation of a gallic acid concentration after the adsorption process (in mg/L).

Spectrophotometric method for anthocyanins (pH differential method)

Cyanidin-3-galactoside and cyanidin-3-glucoside were determined by the spectrophotometric pH differential method (Tonutare et al., 2014). For this

method sodium acetate trihydrate buffer (0.4 M, pH 4.5) and potassium chloride buffer (0.025 M, pH 1.0) were used. 500 μL of anthocyanin standard and 1500 μL of buffer solutions pH 1.0 were added into a first glass cuvette. 500 μL of anthocyanin standard and 1500 μL of buffer solutions pH 4.5 were added into a second glass cuvette. The solutions in two glass cuvettes were incubated for 15 min at a dark place. The absorbance was measured at 510 nm and at 700 nm with a UV-Vis spectrophotometer against the blank solution (which contained 500 μL of distilled water instead of the prepared solution). The absorbance was calculated (Eq. 1):

$$A = (A_{510} - A_{700})_{pH\ 1.0} - (A_{510} - A_{700})_{pH\ 4.5} \quad (1)$$

where:

A = absorbance of standard,

A_{510} = absorbance at 510 nm and

A_{700} = absorbance at 700 nm.

Anthocyanin calibration curves were constructed by plotting the measured absorbance against the anthocyanin concentrations. They were used for the calculation of anthocyanin concentration after the adsorption process (in mg/L).

The study of adsorption between polyphenols and β -glucan

Adsorption of polyphenols onto β -glucan was monitored in model solutions which were added in plastic tubes in total volume of 500 μL . Model solutions contained β -glucan, polyphenol and a phosphate buffer (0.13 M, pH 5.5) (Wu et al., 2011) with the final concentration of β -glucan 5 mg/L, gallic acid 50, 100, 150, and 400 mg/L, cyanidin-3-galactoside and cyanidin-3-glucoside 25, 50, 100, and 150 mg/L, and the rest of the volume was phosphate buffer.

The adsorption was carried out for 16 h at $25\text{ }^{\circ}\text{C}$ for all model solutions. After 16 h, the model solutions were centrifuged (Eppendorf minispin centrifuge, Hamburg, Germany) through a polyethersulfon membrane (Sartorius, Vivaspin 500, 10000 MWCO, 100 - 500 μL). The adsorbed polyphenols retained on the membrane, while the unadsorbed polyphenols passed through the membrane. The unadsorbed polyphenols were determined by the Folin-Ciocalteu method and the method for anthocyanins.

The adsorption capacity was calculated (Eq. 2):

$$q_e = \frac{(V_1 - V_2) \cdot V_1}{V_3 \cdot V_2} \quad (2)$$

where:

- q_e = polyphenols adsorption capacity onto β -glucan (mg/g),
- γ_1 = initial concentration of polyphenols in model solution (mg/L),
- γ_2 = equilibrium concentration of polyphenols in model solution (mg/L),
- V_1 = volume of model solution (L),
- γ_3 = β -glucan concentration in model solution (g/L) and
- V_2 = volume of β -glucan in model solution (L).

Furthermore, isotherm parameters of Freundlich's Langmuir's, Dubinin-Radushkevich's, Tempkin's and Hill's models were calculated according to Table 1 (Foo et al., 2010; Marsal et al., 2012; Babaeivelni et al., 2013; Soto et al., 2011).

Table 1. Linear adsorption isotherm models

<p>Freundlich's model:</p> $\log q_e = \log K_f + \frac{1}{n} \log C_e$	<p>q_e – equilibrium amount of solute adsorbed per unit of adsorbent (mg/g) K_f – constant indicative of the relative adsorption capacity of the adsorbent (mg/g) (L/mg)^{1/n} $1/n$ – indicates the intensity of the adsorption C_e – equilibrium concentration of the solute in the bulk solution (mg/L)</p>
<p>Langmuir's model:</p> $\frac{C_e}{q_e} = \frac{1}{K_l q_m} + \frac{C_e}{q_m}$	<p>C_e – equilibrium concentration of the solute in the bulk solution (mg/L) q_e – equilibrium amount of solute adsorbed per unit of adsorbent (mg/g) K_l – constant related to the free energy of adsorption (L/mg) q_m – maximum adsorption capacity (mg/g)</p>
<p>Dubinin-Radushkevich's model:</p> $\ln q_e = \ln q_m - \beta \varepsilon^2$ $E = \frac{1}{\sqrt{2\beta}}$ $\varepsilon = RT \ln \left(1 + \frac{1}{C_e} \right)$	<p>q_e – equilibrium amount of solute adsorbed per unit of adsorbent (mg/g) q_m – theoretical saturation capacity (mg/g) ε – Polanyi potential (J/mol) β – constant related to the adsorption capacity (mol²/J²) E – adsorption mean free energy (J/mol) R – universal gas constant (8.314 J/mol K) T – temperature (K) C_e – equilibrium concentration of the solute in the bulk solution (mg/L)</p>
<p>Tempkin's model:</p> $q_e = \frac{RT}{b_T} \ln C_e + \frac{RT}{b_T} \ln A$	<p>C_e – equilibrium concentration of the solute in the bulk solution (mg/L) q_e – equilibrium amount of solute adsorbed per unit of adsorbent (mg/g) A – Tempkin isotherm equilibrium constant (L/g) b_T – Tempkin isotherm constant (J/mol) R – gas constant (8.314 J/mol K) T – temperature (K)</p>
<p>Hill's model:</p> $\ln \left(\frac{q_e}{q_{max} - q_e} \right) = n_H \ln C_e - \ln K_D$	<p>C_e – equilibrium concentration of the solute in the bulk solution (mg/L) q_e – equilibrium amount of solute adsorbed per unit of adsorbent (mg/g) q_{max} – maximum adsorption capacity (mg/g) n_H – Hill cooperativity coefficient of the binding interaction K_D – Hill constant (mg/L)</p>

Statistical analysis

For the data analysis MS Excel was used. Calibration curves were constructed by two replicate samples of each standard concentration, each measured twice ($n=4$). The concentration of polyphenols in model solutions was measured twice ($n=2$). In order to obtain linear equations of different adsorption models and corresponding determination coefficient R^2 , linear regression function was used.

Results and discussion

The adsorption isotherms are used for obtaining the information about interactions between polyphenols and different adsorbents (Gao et al., 2012; Gao et al., 2013; Huang, et al., 2007; Marsal et al., 2012; Timothy et al., 2014). There are only a few papers that describe adsorption isotherms of polyphenol adsorption onto the β -glucan (Gao et al., 2012; Wu et al., 2011). The effects of the molecular structure of polyphenols with β -glucan were also investigated (Wang et al., 2013).

In this work, we studied the adsorption process between polyphenolic compounds and β -glucan, as a natural dietary fiber, through the linear adsorption models. Molecular structures of polyphenols like gallic acid, cyanidin-3-galactoside and cyanidin-3-glucoside, which

have been used in this study, are presented in Fig. 1. Gallic acid is a simple molecule which belongs to the phenolic acid subgroup. On the other hand, cyanidin-3-galactoside and cyanidin-3-glucoside are anthocyanins which belongs to the group of flavonoids. They are glycosylated at a position 3 with a glucose at cyanidin-3-glucoside molecule and with a galactose at cyanidin-3-galactoside molecule (Bravo, 1998; Manach et al., 2004). Fig. 2, 3 and 4 represent linear adsorption models of Freundlich's, Langmuir's, Dubinin-Radushkevich's, Tempkin's and Hill's isotherms for gallic acid, cyanidin-3-galactoside, and cyanidin-3-glucoside adsorption onto β -glucan. The linear equation and the corresponding determination coefficient R^2 are associated to each model. Due to the determination coefficient, it can be seen that Freundlich's model fits the best for gallic acid (R^2 is 0.9966), followed by the Hill's, Tempkin's and Dubinin-Radushkevich's model (Fig. 2). For cyanidin-3-galactoside Langmuir's model (R^2 is 0.9741) fits the best, followed by the Freundlich's, Tempkin's, Hill's and Dubinin-Radushkevich's model (Fig. 3). The Freundlich's model fits the best for cyanidin-3-glucoside (R^2 is 0.8624), followed by the Hill's, Tempkin's, Langmuir's and Dubinin-Radushkevich's models (Fig. 4).

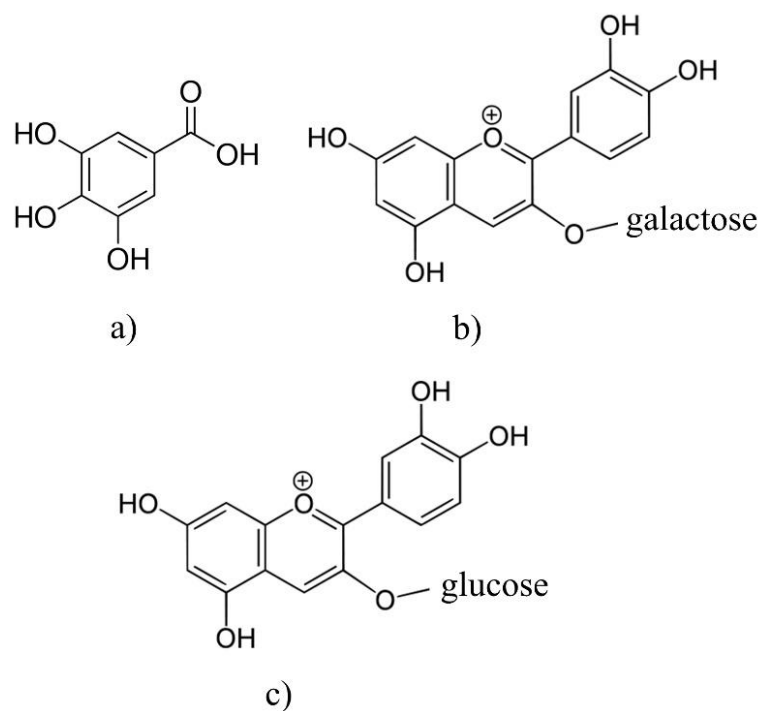


Fig. 1. Molecular structures of polyphenols. a) gallic acid; b) cyanidin-3-galactoside; c) cyanidin-3-glucoside

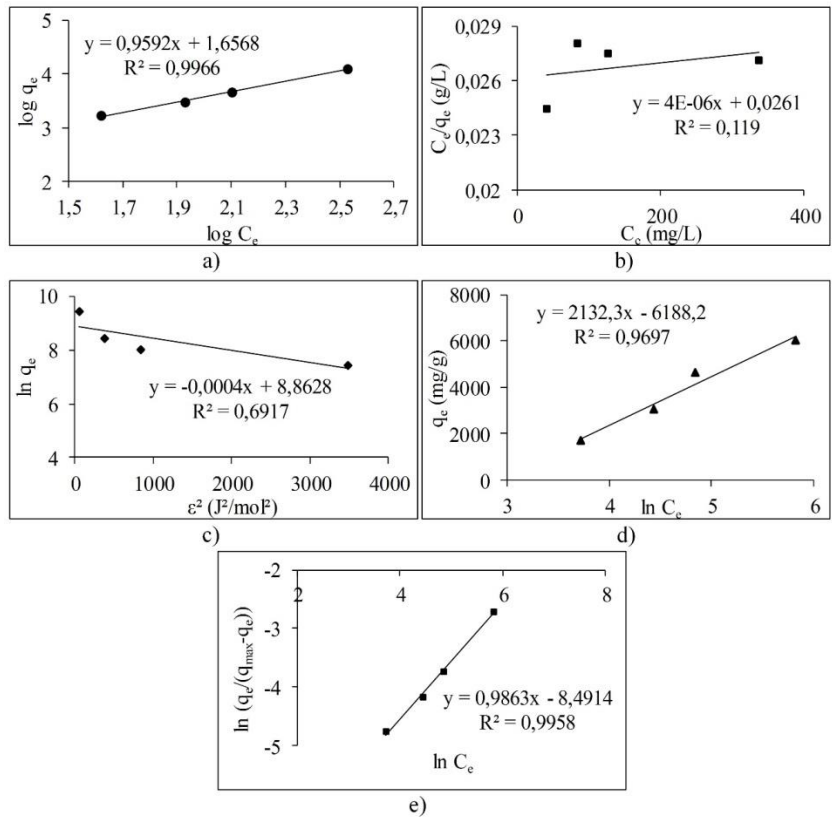


Fig. 2. Linear adsorption isotherm models for gallic acid adsorption onto β -glucan. a) Freundlich's model; b) Langmuir's model; c) Dubinin-Radushkevich's model; d) Tempkin's model; e) Hill's model

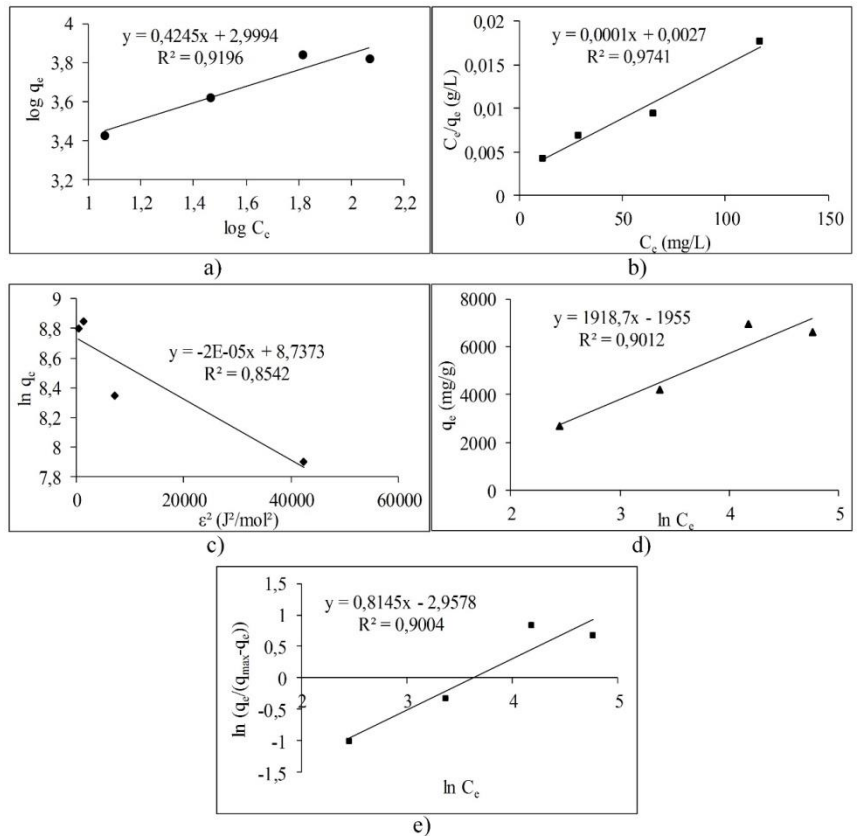


Fig. 3. Linear adsorption isotherm models for cyanidin-3-galactoside adsorption onto β -glucan. a) Freundlich's model; b) Langmuir's model; c) Dubinin-Radushkevich's model; d) Tempkin's model; e) Hill's model

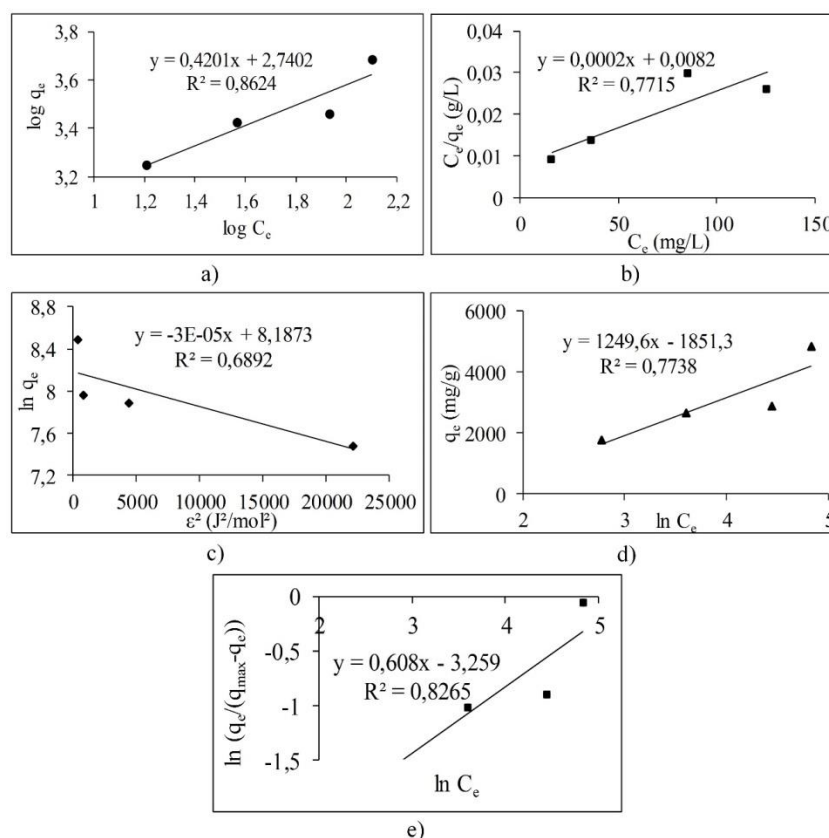


Fig. 4. Linear adsorption isotherm models for cyanidin-3-glucoside adsorption onto β -glucan. a) Freundlich's model; b) Langmuir's model; c) Dubinin-Radushkevich's model; d) Tempkin's model; e) Hill's model

Overall, the adsorption of gallic acid and cyanidin-3-glucoside could be non-ideal, reversible and multilayer due to the Freundlich's model. Due to the slope ($1/n$) of linear equations for gallic acid and cyanidin-3-glucoside, surface heterogeneity is greater for gallic acid than for cyanidin-3-glucoside because of the slope of 0.9592 (Foo et al., 2010; Marsal et al., 2012). Cyanidin-3-galactoside adsorption onto β -glucan could be a monolayer adsorption where all sites possess equal affinity for the adsorbate (Foo et al., 2010).

Table 2 represents adsorption isotherm parameters of Freundlich's and Langmuir's models. The parameters of the Freundlich's model indicate that the adsorption of all polyphenols onto β -glucan is favored because n is higher than 1 for all polyphenols, especially for anthocyanins. The Freundlich's constant K_f presents the value of the adsorption capacity q_e at an equilibrium concentration C_e of 1 mg/L (Marsal et al., 2012). Due to that, the highest adsorption capacity for equilibrium concentration of 1 mg/L showed cyanidin-3-galactoside, followed by cyanidin-3-glucoside and gallic acid. From the Langmuir's model it can be seen that gallic acid showed the highest maximum theoretical adsorption capacity (q_m), followed by cyanidin-3-galactoside and cyanidin-3-glucoside.

Table 3 presents the adsorption isotherm parameters of the Dubinin-Radushkevich's, Tempkin's and Hill's

models. Adsorption mean free energy E indicates that all polyphenols are physically attached to β -glucan because mean free energy is less than 8 kJ/mol (Marsal et al., 2012).

Earlier studies (Quiros-Sauceda et al., 2014; Bordenave et al., 2014) also found that polyphenols can interact with polysaccharides in general by the hydrogen bonds between hydroxyl groups of polyphenols and an oxygen atom of the glycosidic linkages of polysaccharides, then with hydrophobic interactions. Furthermore, dietary fibers in particular, and polyphenols can interact by hydrogen bonds, covalent interactions or physicochemical entrapment during the gastrointestinal digestion (Quiros-Sauceda et al., 2014; Bordenave et al., 2014). This agrees with our study.

The theoretical saturation capacity q_m (Table 3) is higher for gallic acid than for cyanidin-3-galactoside and cyanidin-3-glucoside. The Tempkin's model also showed that adsorption of all polyphenols onto β -glucan is physical. Due to the Tempkin isotherm equilibrium constant A , which presents Tempkin's adsorption potential, cyanidin-3-galactoside showed the highest potential, followed by cyanidin-3-glucoside and gallic acid. Furthermore, Hill cooperativity coefficient of the binding interaction (n_H) is lower than 1, which indicates that all polyphenols showed negative cooperativity in binding (Ringot et al., 2007).

Table 2. Adsorption isotherm parameters of Freundlich's and Langmuir's linear adsorption isotherm models for gallic acid, cyanidin-3-galactoside and cyanidin-3-glucoside adsorption onto β -glucan

	Freundlich's model			Langmuir's model	
	$1/n^a$	n^b	K_f^c (mg/g) (L/mg) ^{1/n}	K_l^d (L/mg)	q_m^e (mg/g)
Gallic acid	0.9592	1.0425	45.373	0.00153	25000
Cyanidin-3-galactoside	0.4245	2.3557	998.619	0.03703	10000
Cyanidin-3-glucoside	0.4201	2.3803	549.794	0.02439	5000

^aIndicates the heterogeneity of adsorbent surface^bIndicates the intensity of adsorption^cIndicates the value of adsorption capacity for equilibrium concentration of 1 mg/L^dConstant related to the free energy of adsorption^eMaximum adsorption capacity**Table 3.** Adsorption isotherm parameters of Dubinin-Radushkevich's, Tempkin's and Hill's linear adsorption isotherm models for gallic acid, cyanidin-3-galactoside and cyanidin-3-glucoside adsorption onto β -glucan

	Dubinin-Radushkevich's model		Tempkin's model		Hill's model	
	E^a (kJ/mol)	q_m^b (mg/g)	A^c (L/g)	b_T^d (kJ/mol)	n_H^e	K_D^f (mg/L)
Gallic acid	0.03535	7064.23	0.0549	0.00116	0.9863	0.000205
Cyanidin-3-galactoside	0.15811	6231.05	0.3609	0.00129	0.8415	0.051933
Cyanidin-3-glucoside	0.12909	3595.00	0.2273	0.00198	0.6080	0.038426

^aAdsorption mean free energy-indicates the physical or chemical adsorption^bTheoretical adsorption capacity^cIndicates Tempkin adsorption potential^dTempkin isotherm constant-indicates the physical or chemical adsorption^eIndicates the positive, negative or noncooperative binding interactions^fHill constant

Conclusions

The results of linear adsorption parameters showed that adsorption between all polyphenols was favored, especially for cyanidin-3-glucoside, followed by cyanidin-3-galactoside and gallic acid. All polyphenols were physically bonded onto β -glucan, where they showed negative cooperativity in binding. Gallic acid showed the highest theoretical adsorption capacity, followed by cyanidin-3-galactoside and cyanidin-3-glucoside. Gallic acid and cyanidin-3-glucoside showed that adsorption onto β -glucan was multilayer, non-ideal and reversible, while cyanidin-3-galactoside showed the monolayer adsorption. This study showed that information about interactions between polyphenols and dietary fibers like β -glucan can be obtained through parameters of linear adsorption models. Also, this information about polyphenol-polysaccharide interactions could help in understanding the bioavailability of polyphenols associated with dietary fibers.

References

Babaeiveli, K., Khodadoust, A. P. (2013): Adsorption of fluoride onto crystalline titanium dioxide: effect of pH, ionic strength, and co-existing ions. *J. Colloid Interface Sci.* 394, 419-427. <https://doi.org/10.1016/j.jcis.2012.11.063>.

- Bravo, L. (1998): Polyphenols: chemistry, dietary sources, metabolism, and nutritional significance. *Nutr. Rev.* 56 (11), 317-333. <https://doi.org/10.1111/j.1753-4887.1998.tb01670.x>.
- Bordenave, N., Hamaker, B. R., Ferruzzi, M. G. (2014): Nature and consequences of non-covalent interactions between flavonoids and macronutrients in foods. *Food Funct.* 5 (1), 18-34. <https://doi.org/10.1039/c3fo60263j>.
- Camouse, M. M., Hanneman, K. K., Conrad, E. P., Baron, E. D. (2005): Protective effects of tea polyphenols and caffeine. *Expert Rev. Anticancer Ther.* 5 (6), 1061-1068. <https://doi.org/10.1586/14737140.5.6.1061>.
- Chen, J., Raymond, K. (2008): Beta-glucans in the treatment of diabetes and associated cardiovascular risks. *Vasc. Health Risk. Manag.* 4, 1265-1272. <https://doi.org/10.2147/vhrm.s3803>.
- Foo, K. Y., Hameed, B. H. (2010): Insights into the modeling of adsorption isotherm systems. *Chem. Eng. J.* 156 (1), 2-10. <https://doi.org/10.1016/j.cej.2009.09.013>.
- Gao, R., Liu, H., Peng, Z., Wu, Z., Wang, Y., Zhao, G. (2012): Adsorption of (-)-epigallocatechin-3-gallate (EGCG) onto oat β -glucan. *Food Chem.* 132 (4), 1936-1943. <https://doi.org/10.1016/j.foodchem.2011.12.029>.
- Gao, Z. P., Yu, Z. F., Yue, L. T., Quek, S. Y. (2013): Adsorption isotherm, thermodynamics and kinetics studies of polyphenols separation from kiwifruit juice using adsorbent resin. *J. Food Eng.* 116 (1), 195-201. <https://doi.org/10.1016/j.jfoodeng.2012.10.037>.

- Huang, J., Huang, K., Liu, S., Luo, Q., Xu, M. (2007): Adsorption properties of tea polyphenols onto three polymeric adsorbents with amide group. *J. Colloid Interface Sci.* 315 (2), 407-414. <https://doi.org/10.1016/j.jcis.2007.07.005>.
- Jakobek, L. (2015): Interactions of polyphenols with carbohydrates, lipids and proteins. *Food Chem.* 175, 556-567. <https://doi.org/10.1016/j.foodchem.2014.12.013>.
- Kampa, M., Nifli, A.P., Notas, G., Castanas, E. (2007): Polyphenols and cancer growth. *Rev. Physiol. - Biochem. Pharmacol.* 159, 79-113.
- Kofuji, K., Aoki, A., Tsubaki, K., Konishi, M., Isobe, T., Murata, Y. (2012): Antioxidant activity of β -glucan. *ISRN Pharmaceutics* 2012, 1-5. <https://doi.org/10.5402/2012/125864>.
- Laroche, C., Michaud, P. (2007): New developments and prospective applications for β (1,3) glucans. *Recent Pat. Biotechnol.* 1 (1), 59-73. <https://doi.org/10.2174/187220807779813938>.
- Le Bourvellec, C., Renard, C. M. G. C. (2012): Interactions between polyphenols and macromolecules: quantifications methods and mechanism. *Crit. Rev. Food Sci. Nutr.* 52 (3), 213-248. <https://doi.org/10.1080/10408398.2010.499808>.
- Manach, C., Scalbert, A., Morand, C., Remesy, C., Jimenez, L. (2004): Polyphenols: food sources and bioavailability. *Am. J. Clin. Nutr.* 79, 727-747.
- Marsal, A., Maldonado, F., Cuadros, S., Bautista, M. E., Manich, A. M. (2012): Adsorption isotherm, thermodynamic and kinetics studies of polyphenols onto tannery shavings. *Chem. Eng. J.* 183, 21-29. <https://doi.org/10.1016/j.cej.2011.12.012>.
- Quiros-Sauceda, A. E., Palafox-Carlos, H., Sayago-Ayerdi, S. G., Ayala-Zavala, J. F., Bello-Perez, L. A., Alvarez-Parrilla, E., de la Rosa, L. A., Gonzalez-Cordova, A. F., Gonzalez-Aguilar, G. A. (2014): Dietary fiber and phenolic compounds as functional ingredients: interaction and possible effect after ingestion. *Food Funct.* 5 (6), 1063-1072. <https://doi.org/10.1039/c4fo00073k>.
- Queenan, K. M., Stewart, M. L., Smith, K. N., Thomas, W., Fulcher, G., Slavin, J. L. (2007): Concentrated oat β -glucan, a fermentable fiber, lowers serum cholesterol in hypercholesterolemic adults in a randomized controlled trial. *Nutr. J.* 6 (1), 1-8. <https://doi.org/10.1186/1475-2891-6-6>.
- Palafox-Carlos, H., Ayala-Zavala, J. F., Gonzalez-Aguilar, G. A. (2011): The role of dietary fiber in the bioaccessibility and bioavailability of fruit and vegetable antioxidants. *J. Food Sci.* 76 (1), R6-R15. <https://doi.org/10.1111/j.1750-3841.2010.01957.x>.
- Pandey, K. B., Rizvi, S. I. (2009): Plant polyphenols as dietary antioxidants in human health and diseases. *Oxid. Med. Cell. Longev.* 2 (5), 270-278. <https://doi.org/10.4161/oxim.2.5.9498>.
- Ringot, D., Lerzy, B., Chaplain, K., Bonhoure, J. P., Auclair, E., Larondelle, Y. (2012): *In vitro* biosorption of ochratoxin A on the yeast industry by-products: comparison of isotherm models. *Bioresour. Technol.* 98 (9), 1812-1821. <https://doi.org/10.1016/j.biortech.2006.06.015>.
- Scalbert, A., Manach, C., Morand, C., Remesy, C. (2005): Dietary polyphenols and the prevention of diseases. *Crit. Rev. Food Sci. Nutr.* 45, 287-306.
- Singleton, V. L., Orthofer, R., Lamuela-Raventós, R. M. (1999): Analysis of total phenols and other oxidation substrates and antioxidants by means of Folin-Ciocalteu reagents. *Methods Enzymol* 299, 152-178. [https://doi.org/10.1016/s0076-6879\(99\)99017-1](https://doi.org/10.1016/s0076-6879(99)99017-1).
- Soto, M. L., Moure, A., Dominguez, H., Parajo, J. C. (2011): Recovery, concentration and purification of phenolic compounds by adsorption: a review. *J. Food. Eng.* 105 (1), 1-27. <https://doi.org/10.1016/j.jfoodeng.2011.02.010>.
- Timothy, J. B., Amandeep, K. S., Li, Z., Rock, C. R., Yang, W. W., Gu, L. (2014): Adsorption/desorption characteristics and separation of anthocyanins and polyphenols from blueberries using macroporous adsorbent resin. *J. Food Eng.* 128, 167-173.
- Tonutare, T., Moor, U., Szajdak, L. (2014): Strawberry anthocyanin determination by pH differential spectroscopic method-how to get true results?, *Acta Sci. Pol. Hortorum Cultus* 13, 35-47.
- Wang, Y., Liu, J., Chen, F., Zhao, G. (2013): Effects of molecular structure of polyphenols on their noncovalent interactions with oat β -glucan. *J. Agric. Food Chem.* 61 (19), 4533-4538. <https://doi.org/10.1021/jf400471u>.
- Wu, Z., Li, H., Ming, J., Zhao, G. (2011): Optimization of adsorption of tea polyphenols into oat β -glucan using response surface methodology. *J. Agric. Food Chem.* 59 (1), 378-385. <https://doi.org/10.1021/jf103003q>.

Received: November 11, 2016

Accepted: November 25, 2016