

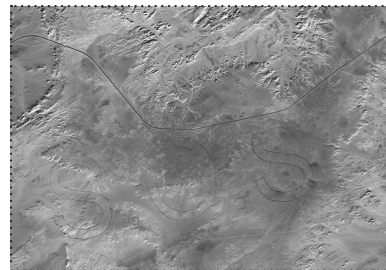


Najveći grafit na svijetu

M2 - SANTIAGO SIERRA

World's Largest Graffiti

memorijalno M2 memorial



Najveći grafit na svijetu

U suradnji s kulturnom organizacijom Artifariti i članovima oslobodilačkog pokreta Frente Polisario, u listopadu 2012. godine natpis „S.O.S.“ upisan je u pustinjsko tlo Zapadne Sahare, u blizini izbjegličkog kampa Sahrawi u Alžiru. Veličina ovog grafita jest 5 × 1,7 km, što ga čini najvećim grafitom na svijetu.

Rad obilježava borbu naroda Sahrawi za neovisnost od marokanske vlasti u gotovo zaboravljenom zapadnosaharskom konfliktu. Trideset i šest godina Sahrawi žive u improviziranim uvjetima, u privremenom kampu u Sahari, jugoistočno od Tindoufa.

VELIČINA: 5000 × 1700 M
DUŽINA/PUTANJA VANJSKIH LINIJA NATPISA: 37 000 M
OBILJEŽENE REFERENTNE TOČKE: GOTOVO 2000
FONT: ARIAL NARROW
VELIČINA FONTA: 6 800 000 PT
ZEMLJOPISNA ŠIRINA: 27.4348919287 STUPNJEVA
ZEMLJOPISNA DUŽINA: -7.9418410842 STUPNJEVA

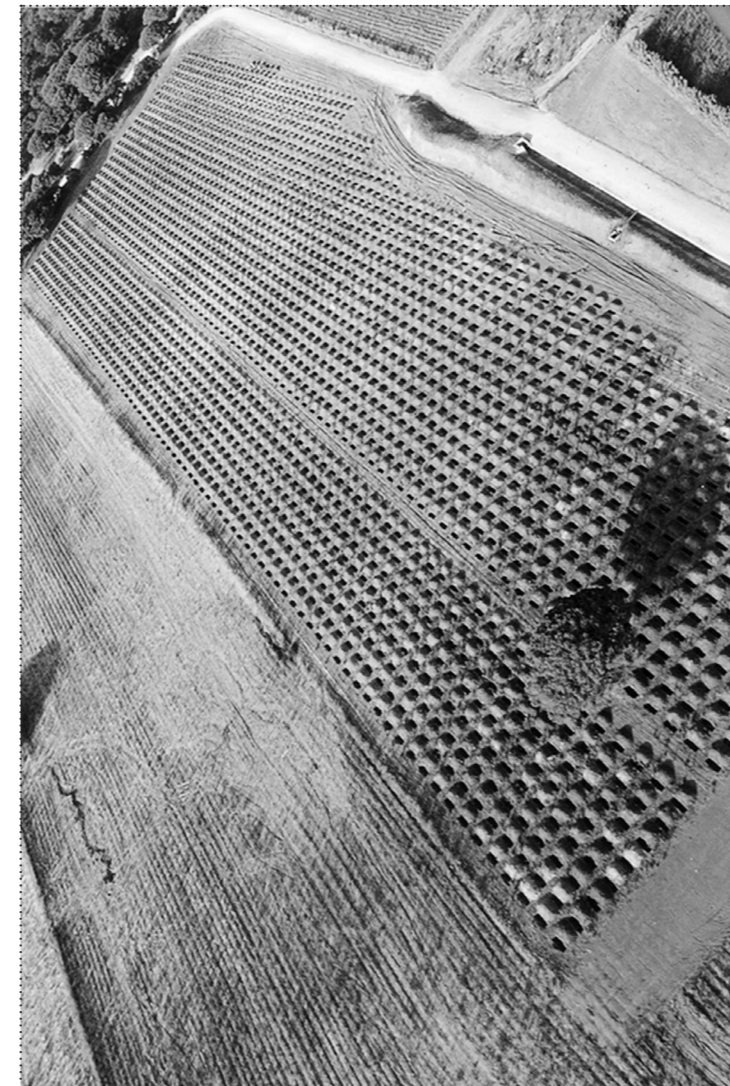
SANTIAGO SIERRA

World's Largest Graffiti

In October 2012 the letters “S.O.S.” were carved into the ground of Western Sahara/Algeria near the Sahrawi refugee camp Smara in collaboration with Sahrawi and the Frente Polisario. The graffiti measures 5 km x 1,7 km, which makes it the largest graffiti in the world.

The piece refers to the Sahrawi people's struggle for independence from Moroccan rule in the almost forgotten West Sahara conflict. For 36 years they have lived in makeshift conditions under the provisional arrangement of the refugee camps in the Sahara desert, south east of Tindouf.

SCALE: 5.000 M X 1.700 M
LENGTH/PATH OF OUTLINES: 37.000 M
MARKED REFERENCE POINTS: ALMOST 2.000
FONT: ARIAL NARROW
FONT SIZE: 6.800.000 PT
LATITUDE: 27.4348919287 DEGREES
LONGITUDE: -7.9418410842 DEGREES



3000 RUPA VELIČINE 180 x 50 x 50 CM.
DEHESA DE MONTENMEDIO, VEJER DE LA
FRONTERA (CÁDIZ), ŠPANJOLSKA. SRPANJ 2002.

3.000 HOLES OF 180 X 50 X 50 CM EACH.
DEHESA DE MONTENMEDIO, VEJER DE LA
FRONTERA (CÁDIZ), SPAIN. JULY 2002

PODČINJENOST.
ANAPRA, CIUDAD JUÁREZ, CHIHUAHUA, MEXICO.
LISTOPAD 2006. – OŽUJAK 2007.

SUBMISSION.
ANAPRA, CIUDAD JUÁREZ, CHIHUAHUA, MEXICO.
OCTOBER 2006 / MARCH 2007

