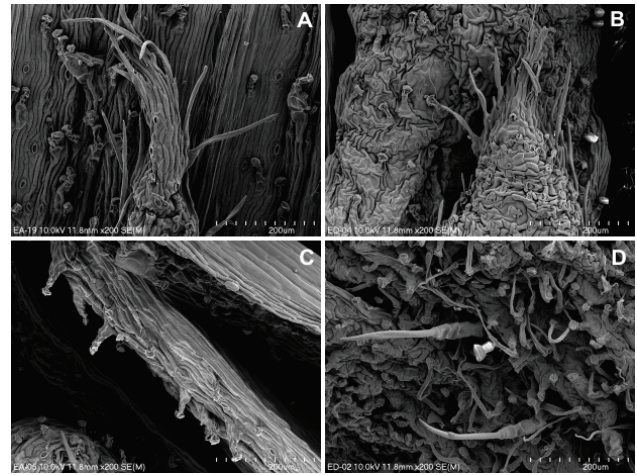
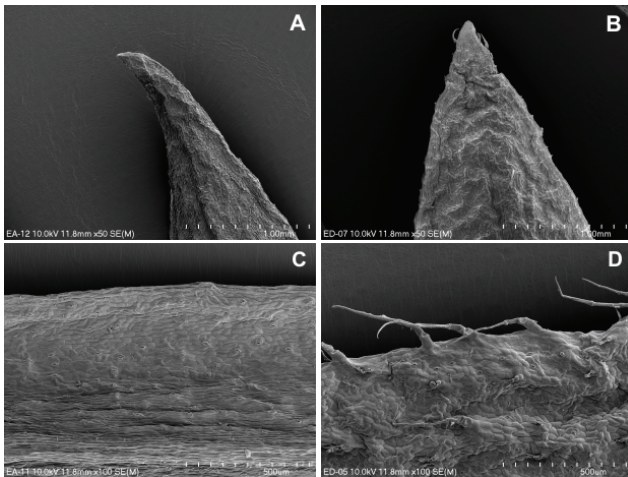


On-line Suppl. Fig. 1. Indumentum details in *Erigeron acris* subsp. *angulosus* (A, C) and *E. acris* subsp. *droebachiensis* (B, D): A, B – involucre bracts; C, D – peduncles.



On-line Suppl. Fig. 2. Indumentum details in *Erigeron acris* subsp. *angulosus* (A, C) and *E. acris* subsp. *droebachiensis* (B, D): A, B – upper part of involucre bracts; C, D – trichomes on involucre bracts.



On-line Suppl. Fig. 3. Indumentum details in *Erigeron acris* subsp. *angulosus* (A, C) and *E. acris* subsp. *droebachiensis* (B, D): A, B – apex of upper cauline leaves; C, D – leaf margins at the base of lower cauline leaves.