

Marko Ruždjak

VITAE ARBOR



M. RUŽDŽAK :

VITAE ARBOR (organo solo)

3/4 [♩ = 63] Cm 2. besta

MANUAL

Musical score for Manual section, staves IV, III, II, and I. The score is in common time (3/4) with a tempo of ♩ = 63. The key signature is C minor (Cm). The notation shows rests for staves IV, III, and II, and a melodic line for staff I. Dynamics include *mf* and *ff*. Performance instructions include "Mixer [Solo]" and "Mixer/Scharf [Zymbel Solo]".

PEDAL

Musical score for Pedal section, 32' Bembarde. The notation shows a sustained note with a dynamic of *f*. Performance instructions include "32' Bembarde" and "f. Bembardan 32'".



Musical score for Manual section, staves IV, III, II, and I. The score is in common time (3/4) with a tempo of ♩ = 63. The key signature is C minor (Cm). The notation shows melodic lines for staves IV, III, II, and I. Dynamics include *mf* and *ff*. Performance instructions include "Mixer [Solo]" and "Mixer/Scharf [Zymbel Solo]".

* [Tuba 16' + Bembardan 16' + Subbas 16'
(- Bembarde 32')
- f. B. 32'

Handwritten musical score for four voices (I, II, III, IV) and tuba. The score shows a long melodic line with a fermata and a dynamic marking of *ff*.

Handwritten musical score for tuba and grand bourdon. Includes handwritten notes: "Grand bourdon 32'", "(- Tuba 16')", "Bourdon 16'", and "Tubass 16'".

Two empty musical staves.

Handwritten musical score for four voices (I, II, III, IV).

Handwritten musical score for grand bourdon.

(gr. bourdon 32')

II Fonds 8'
[♩ = 92]

MAN

PED

Bourdon 16' + Subbass 16
(- G. Bourdon 32')



III Trompete 8' + Obre
+ Enger / cr. + mix.
[♩ = 54]

Oktarbas 8'
(- Bourdon 16')

+ Violon 8'
+ Flauto 8' + Subbass 16'

Handwritten musical score for piano and trumpet. The score is divided into three systems.

System 1: Piano part (treble and bass clefs) and Trumpet part (treble clef). Annotations: *+ Zymbel*, *Trompete 8+4' + Superoktave 2'*, *ff*. The trumpet part features a melodic line with slurs and accents.

System 2: Continuation of the piano part from the first system.

System 3: Piano part and Bass part (bass clef). Annotation: *- Oktavbass 8'*. The bass part consists of a simple harmonic accompaniment.

3 [♩ = 88]

III Flauto 8' +
Mazard
2 7/3

II Flauto
8+4

Sub-
bass
16'

Princinet
6'

Musical score for the first section, measures 1-16. It features a flute part with various ornaments and a piano accompaniment. The tempo is 3/4 with a quarter note equal to 88 bpm. The key signature has one flat (B-flat).

///

3 [♩ = 63]

Musical score for the second section, measures 17-24. It features a piano accompaniment and a section for Violon 8' + Flauto 8' (- Subbass 16'). The tempo is 3/4 with a quarter note equal to 63 bpm. The key signature has one flat (B-flat).

III [Jal. offen] Saticional, fujara mf Jalousie schliessen

Violon 8' + Flauto 8' (- Subbass 16')

(IV) (Mixer [scharf])

(I) Jensenhorn 8'

Jal. offen schließen Jal.

(Violonbass 8')

(I) (Jensenhorn 8')

(IV) (Mix)

(IV) (Mix)

(I) (Jensenhorn 8')

(IV) (Mix)

- Violonbass 8'

L | = 69 |

II Principal 8'

III Principal 8' *mf*

Musical notation for Principal 8' instruments. The top staff is a grand staff with treble and bass clefs, containing notes and rests. The bottom staff is a grand staff with treble and bass clefs, mostly empty with some notes at the end. A piano dynamic marking *mf* is present.

Chorbass 4' + Flötenbass 8'



Musical notation for Chorbass 4' and Flötenbass 8' instruments. The top staff is a grand staff with treble and bass clefs, containing notes and rests. The bottom staff is a grand staff with treble and bass clefs, containing notes and rests.

Musical notation for Chorbass 4' and Flötenbass 8' instruments. The top staff is a grand staff with treble and bass clefs, containing notes and rests. The bottom staff is a grand staff with treble and bass clefs, containing notes and rests.



[| = 60] *Accelerando poco a poco*

IV (Mixture [solo] / *pp*)

Beide Hände auf

Musical notation for Mixture [solo] instrument. The top staff is a grand staff with treble and bass clefs, containing notes and rests. The bottom staff is a grand staff with treble and bass clefs, containing notes and rests.

Musical notation for Flötenbass 8' and Chorbass 4' instruments. The top staff is a grand staff with treble and bass clefs, containing notes and rests. The bottom staff is a grand staff with treble and bass clefs, containing notes and rests.

acc. poco - a poco

Handwritten musical score for piano. The right hand part features a melodic line with notes G4, A4, B4, and C5. The left hand part features a bass line with notes G3, F3, E3, and D3. The score includes dynamic markings *p* and *mp*, and circled Roman numerals II and III. The text "(Mitur [Solo])" is written above the right hand part.

Handwritten musical score for Flötenbass 8'. The staff shows a single note G3 with a fermata. The text "(Flötenbass 8')", "7", and "b." are present.

Nota: Dieses "Miturrescendo" so differenziert wie möglich

acc.

Handwritten musical score for piano. The right hand part features a melodic line with notes G4, A4, B4, and C5. The left hand part features a bass line with notes G3, F3, E3, and D3. The score includes dynamic markings *p* and *mf*, and a circled Roman numeral II. The text "(Mitur [Solo])" is written above the right hand part.

Handwritten musical score for Flötenbass 8'. The staff shows a single note G3 with a fermata. The text "- Flötenbass 8'", "7", and "b." are present.

acc. al [♩ = 100]

Handwritten musical score for piano. The right hand part features a melodic line with notes G4, A4, B4, and C5. The left hand part features a bass line with notes G3, F3, E3, and D3. The score includes dynamic markings *p* and *ff*, and circled Roman numerals I and II. The text "(Mitur [Solo])" is written above the right hand part.

Handwritten musical score for Clarino 4' + Fagotto 4'. The staff shows a single note G3 with a fermata. The text "Clarino 4' + Fagotto 4'", "7", and "b." are present.

ritardando — poco — a — poco —

II Mix [solo]/mf

I Mix [solo]/f

(Clarin 4')

Machthorn 2' (- Clarinet 4)

Flauto 4' 8-tam vice

rit.

III Mix [solo]/mp

rit.

IV Mix [solo]/p

r.H. b

L.H. #

IV r.H. b

al [♩ = 60]

④ Mix [solo] / pp



Mix [solo] / pp [♩ = 80]



③ Fuzara 8'

(III = Fuzara 8')

(III = Fuz. 8')

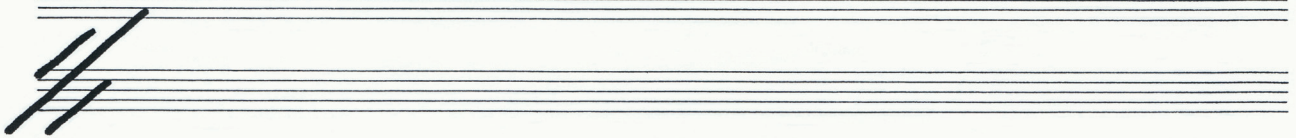
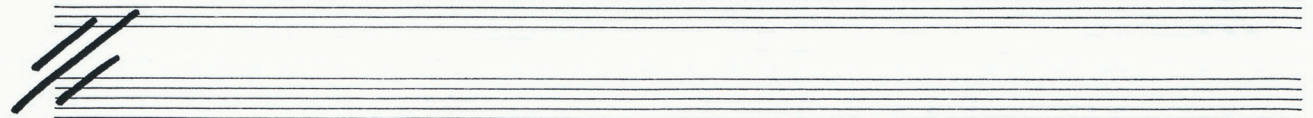
[1 = 80]

(II = Flauto 8')

(Flauto 4')

- Flauto 4'

Flauto 2' + Sifflet 1



[$\overset{3}{\text{tr}} = \text{tr} = 80$]

IV

Traversflöte 8', Terzian 1' 3/5

rechte Hand

linke Hand

(Kochhorn 2')

+ Blockflöte 4'

Handwritten musical score for the first system. It features a treble clef and a key signature of one sharp (F#). The notation includes a complex melodic line with many accidentals and a bass line with fewer notes.

Handwritten musical score for the second system, featuring a bass clef and a key signature of one sharp (F#). The notation is mostly rests.

Empty musical staff.

Musical staff with three diagonal slashes indicating a section break.

Empty musical staff.

Handwritten musical score for the third system, featuring a treble clef and a key signature of one sharp (F#). The notation includes a complex melodic line with many accidentals and a bass line with fewer notes.

Handwritten musical score for the fourth system, featuring a bass clef and a key signature of one sharp (F#). The notation is mostly rests.

Empty musical staff.

(IV) Terzian $1 \frac{3}{5}$
 Traversflöte 8 + Mazard $2 \frac{2}{3}$
 Blockflöte 4 Siflöte 1

- Mazard $2 \frac{2}{3}$
Siflöte 1

///

- Blockflöte 4

///

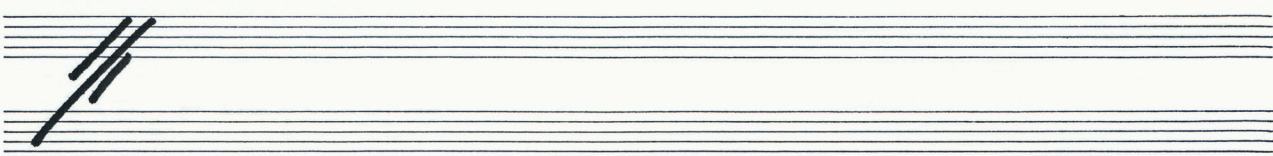
rit - - - - - al

Fouds 8'

Tempo ritenuto [♩ = 60] Con liberta

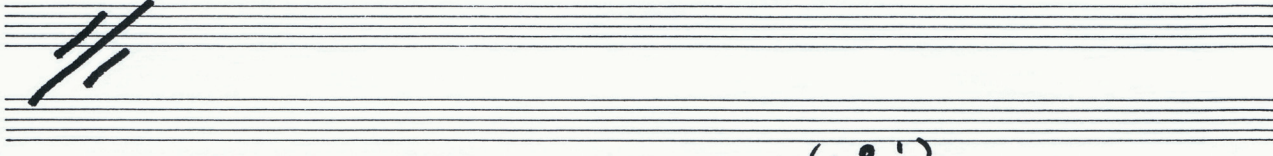
MAN

PED



(+4')

Ped. 8'



(+2')

Ped. 8'

Handwritten musical score for the first system. It consists of two staves: a treble clef staff on top and a bass clef staff on the bottom. The music includes various notes, rests, and dynamic markings. A handwritten instruction "Ped. 16'" is written below the bass staff. The system concludes with a double bar line.

///
(+ Mixtur)

Handwritten musical score for the second system. It consists of two staves: a treble clef staff on top and a bass clef staff on the bottom. The music includes various notes, rests, and dynamic markings. A handwritten instruction "Ped. 32'" is written below the bass staff. The system concludes with a double bar line.

///

Handwritten musical score for the third system. It consists of two staves: a treble clef staff on top and a bass clef staff on the bottom. The music includes various notes, rests, and dynamic markings. A handwritten instruction "Ped. 16'" is written below the bass staff. The system concludes with a double bar line.

(- Mixtur)

f
Ped. 8'

[- 2')
mf
Ped. 4'

[- 4')
p
Ped. 2'

x **IV** (Mix [solo])
pp




Musko Ruzick
Zgb, 12. Jan 71.