

Čuj, Stvoritelju

(korizmeni himan)

ANĐELKO KLOBUČAR

Umjereno

Piano introduction in G major, 4/4 time. The music features a melodic line in the right hand and a supporting bass line in the left hand, both marked with a piano (p) dynamic.

PUK:

1. Ti sr-ca blag i - stra-žu-ješ, Ti slabost na-šu po-zna-ješ, po-

Piano accompaniment for the first vocal line, corresponding to the lyrics '1. Ti sr-ca blag i - stra-žu-ješ, Ti slabost na-šu po-zna-ješ, po-'. The accompaniment consists of chords and moving lines in both hands.

2. 3. 4. volta SOLO:

-šte-di, mi se ka-je-mo, pro-šte-nja mi-lost mo-li-mo.

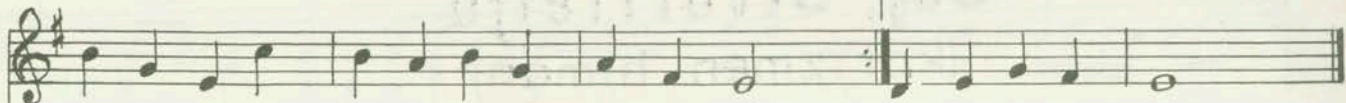
2. Čuj,
3. O
4. U -

Piano accompaniment for the second vocal line, corresponding to the lyrics '-šte-di, mi se ka-je-mo, pro-šte-nja mi-lost mo-li-mo.'. The accompaniment continues with harmonic support for the vocal melody.

2. Stvo-ri-te-lju mi-lo-stiv naš plač i na-še mo-li-tve u po-sve-će-nom
3. mno-go, mno-go gr-ješj-smo i - spoj-e-da-mo, smi-luj se! Rad sla-ve svo-ga
4. dje-li, Troj-stvo blaže-no, po-da-ti, Bo-že je-d'i-ni, da posti Tvo-jim

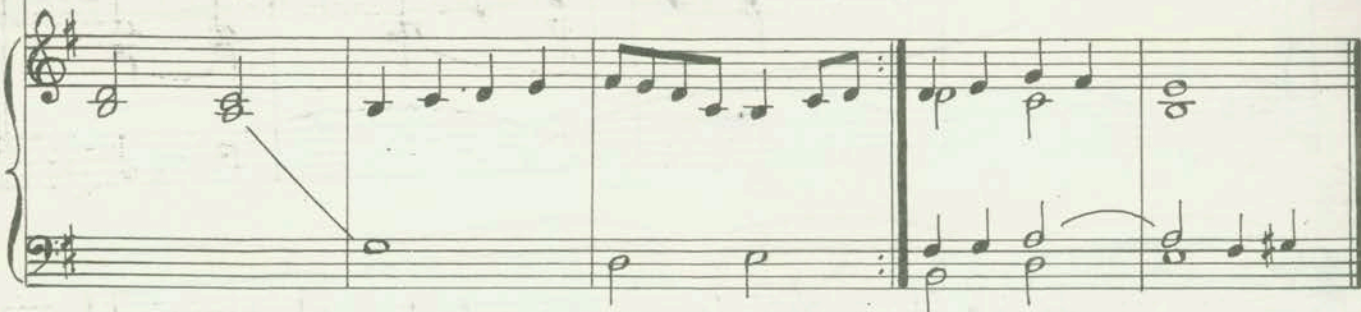
Piano accompaniment for the final vocal line, corresponding to the lyrics '2. Stvo-ri-te-lju mi-lo-stiv naš plač i na-še mo-li-tve u po-sve-će-nom...'. The accompaniment concludes the piece with sustained chords.

4. volta



2. po-stu tom, u ko-ri-zmenom vre-me-nu.
3. i-me-na iz-lijе-ći bol-ne, Go-spo-de.
4. vjerni-ma do-ne-su plod o-bi-la-ti.

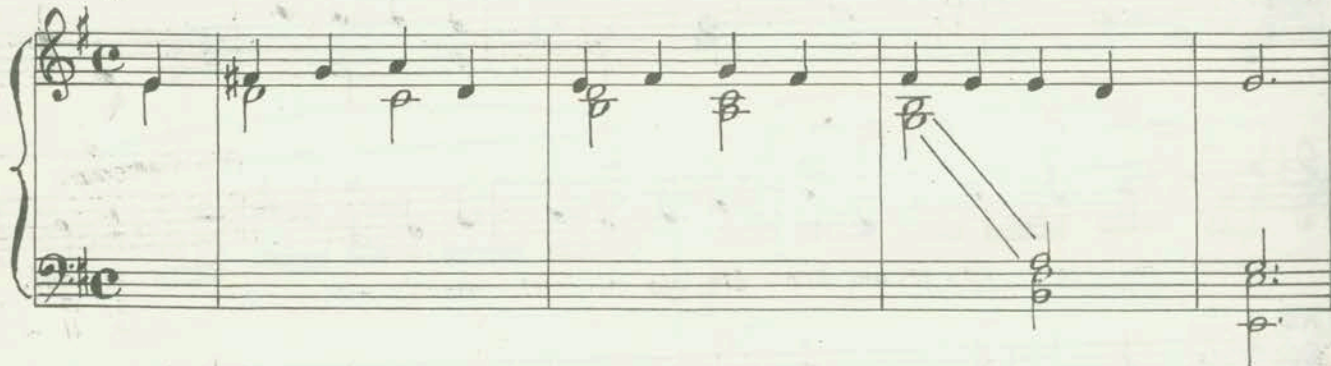
A - - - - men.



Posveti post naš (korizmeni himan)

Umjereno

ANĐELKO KLOBUČAR



PUK:



1. Nek o-vo vrijeme ob-no-vno, za o-bra-će-nje po-godno i

