

Još jedan nalaz ranokarolinškog koplja s krilcima iz šljunčare Jegeniš kraj Koprivnice

Another Find of an Early Carolingian Winged Spearhead from the Gravel Extraction Plant of Jegeniš near Koprivnica

Izvorni znanstveni rad
Srednjovjekovna arheologija

*Original scientific paper
Medieval archaeology*

TAJANA SEKELJ IVANČAN
Institut za arheologiju
Ulica grada Vukovara 68
HR – 10000 Zagreb
tajana-sekelj.ivancan@iarh.hr

UDK/UDC 904:685.637](497.5–37 Koprivnica)“653”

Primljeno/Received: 16. 04. 2007.

Prihvaćeno/Accepted: 10. 09. 2007.

Prigodom separacije šljunka, eksploatiranog tijekom 2002. god. na šljunčari Jegeniš sjeveroistočno od Koprivnice, slučajno je u travnju 2006. god. pronađen donji dio željeznog koplja. Primjerak pripada tipu koplja s izduženo-listolikim bodilom i tuljcem za usađivanje drvenog drška. Na ukrašenom tuljcu nalaze se dva bočna krilca. Prigodom daljnje separacije šljunka koji potječe s istog položaja, pronađen je vrh koplja za koji se pretpostavlja da pripada istom predmetu. Novopronađeno koplje s krilcima iz šljunčare Jegeniš, prema oblikovnim značajkama, može se datirati u razdoblje od posljednjeg desetljeća 8. st. do prve trećine 9. st., što je potvrdila i C14 analiza očuvanog drva jasena iz tuljca. Još jedno koplje s krilcima pronađeno na šljunčari uz rijeku Dravu, uz prije objavljene nalaze, dodatni je prilog pretpostavci o postojanju groblja koje je uništeno eksploatacijom šljunka.

Ključne riječi: koplje s krilcima, ranokarolinški horizont, slučajni nalaz, Koprivnica

A lower part of an iron spearhead was found by chance at the gravel extraction plant of Jegeniš northeast of Koprivnica during the separation of gravel extracted in the course of 2002. The piece belongs to the type of spearhead with an elongated leaf-shaped head and a socket for hafting the wooden shaft. There are two lateral wings on the decorated socket. The further separation of gravel originating from the same site produced a spearhead tip presumed to have belonged to the same object. Based on its morphological features, the newly-discovered winged spearhead from the Jegeniš gravel plant can be dated to the period between the last decade of the 8th century until the first third of the 9th century, which was corroborated by the 14C analysis of the preserved ash wood from the socket. Another winged spearhead, found on the gravel extraction plant next to the Drava river, in addition to the previously published finds, adds further weight to the assumption about the existence of a cemetery destroyed by gravel exploitation.

Key words: winged spearhead, early Carolingian horizon, chance find, Koprivnica

Tijekom posljednjih desetljeća eksploatiranja i separacije šljunka na Bilokalnikovoj šljunčari Jagnje(ž)đe, Jagneđe ili Jegeniš, sjeveroistočno od Koprivnice, prikupljeno je mnoštvo predmeta materijalne kulture koji pripadaju vremenu od prapovijesti pa sve do današnjih dana.¹ U ovom je radu pozornost usmjerena na nalaz dijela srednjovjekovnog željeznog koplja s krilcima koji je na svjetlo dana dospio u travnju 2006. god. pri separaciji šljunka eksploatiranog tijekom 2002. god. i deponiranog kraj jezera Jegeniš. S istog mjesta potječe i prije otkriven nalaz cjelovito očuvanog ranokarolinškog koplja s krilcima (Sekelj Ivančan 2003, 81-82;

1. Dio predmeta pohranjen je u Muzeju grada Koprivnice, a dio se nalazi u zbirci nalaznika Ivana Zvjerca iz Torčeca, Podravska 9, kojem srdačno zahvaljujem na obavijestima i ustupljenim podacima o oba ranokarolinška koplja iz šljunčare.

During the last few decades of exploiting and separating gravel in the Bilokalnik gravel extraction plant of Jagnje(ž)đe, Jagneđe or Jegeniš, northeast of Koprivnica, a wealth of objects of material culture was collected, which belong to the time from prehistory up until the present.¹ This paper focuses on the find of a part of a mediaeval iron winged spearhead, which saw the light of day in April 2006 during the separation of gravel exploited in the course of 2002 and deposited next to the Jegeniš lake. The same site previously yielded also a completely preserved early Carolingian winged spearhead (Sekelj Ivančan 2003, 81-82; Sekelj Ivančan 2004, 109-128, Map

1. Part of the finds are deposited in the Koprivnica Municipal Museum, while the rest is kept in the collection of the finder, Ivan Zvjerac from Torčec, Podravska 9, whom I cordially thank for the information and data about both early Carolingian spearheads from the gravel plant.

Sekelj Ivančan 2004, 109-128, Karta 1/1).² Nadalje, prigodom daljnje separacije šljunka koji potječe s istog položaja, pronađen je i vrh koplja koji zasigurno pripada istom predmetu. Na oba dijela koplja bili su vidljivi tragovi većih nakupina šljunka i pijeska, što upućuje na dulju izloženost predmeta šljunčanom, odnosno pjeskovitom okružju u vodi.

Donji dio bodila koplja je izduženo-listolikog oblika sa slabo naglašenim središnjim bridom. Na njega se nadovezuje očuvani tuljac za usađivanje drvenog drška, odnosno motke. U donjem dijelu, na mjestu gdje se koplje nasađuje na drvenu motku, tuljac ima dva bočna, nasuprotno postavljena krilca (T. 1). Duljina donjeg dijela koplja je 19,6 cm, od čega je 8,5 cm duljina tuljca, a 11,1 cm duljina očuvanog lista. List je punog presjeka u obliku slabo naglašenog uskog romba debljine 0,8 cm, te najveće širine 3 cm. Vrh lista koplja duljine je 11 cm, a pretpostavlja se da bi izvorna dužina koplja mogla biti oko 42-45 cm. Promjer donjeg dijela tuljca na mjestu gdje se nasađivao na motku je 2,7 cm, a sužava se prema listu gdje mu je promjer 1,6 cm. Dubina očuvanog utora na tuljcu za umetanje drvene motke je 10 cm. Ukupan raspon krilaca je 8,3 cm, dok je širina svakog krilca 2,1 cm. Na mjestu gdje su krilca spojena na tuljac, njihova visina iznosi 3,1 cm, a debljina 0,3 cm. Težina donjeg dijela koplja je 217,5 grama, a vrha 47,2 grama.

U tuljcu je očuvan ostatak drva motke koji je predan na ispitivanje.³ Rezultati analize su pokazali da se nedvojbeno radi o vrsti bijelog ili običnog jasena (*Fraxinus excelsior* L.), drva koje je izuzetno pogodno za obradu. Ista vrsta drveta rabljenog za izradu motke ustanovljena je kod prije pronađenog ranokarolinškoga koplja s krilcima iz iste šljunčare (Sekelj Ivančan 2004, 110), kao i kod koplja iz Cetine (Katalog 2000, 254).

U prije objavljenom radu, pri obradi prvog pronađenog koplja s krilcima iz Jegeniša, donose se svi, prema oblikovnim značajkama analogni i do tada evidentirani, nalazi na području Hrvatske te okolnih država: Slovenije, Bosne i Hercegovine,⁴ ali i šireg europskog područja, sa svom rele-

1/1).² Moreover, during the further separation of gravel originating from the same site, the top of a spearhead was found, which certainly belongs to the same object. Traces of clusters of gravel and sand were visible on both spearhead parts, which suggests that the objects were exposed to a gravelly or sandy environment in water over an extended period of time.

The lower part of the spearhead has an elongated leaf-shape form with a barely pronounced central ridge. A preserved socket for hafting a wooden shaft or pole extends from the head. In the lower portion, at the point where the spear is hafted onto a wooden shaft, the socket contains two lateral, oppositely placed wings (Pl. 1). The length of the lower part of the spearhead is 19,6 cm, of which 8,5 cm is the length of the socket, while 11,1 is the length of the preserved leaf. The leaf is of a solid cross-section in the shape of a barely pronounced narrow rhomb 0,8 cm thick and 3 cm wide on the widest part. The top of the spearhead leaf is 11 cm long, and it is presumed that the original length of the spearhead may have been around 42-45 cm. The diameter of the lower part of the socket at the point where it was hafted onto a shaft is 2,7 cm and it tapers towards the leaf where its diameter is 1,6 cm. The depth of the preserved groove on the socket for hafting the wooden shaft is 10 cm. The total span of the wings is 8,3 cm, while the width of each wing is 2,1 cm. At the point where the wings are attached to the socket, their height is 3,1 cm and width 0,3 cm. The weight of the lower part of the spear is 217,5 grams and of the top 47,2 grams.

The socket contained the preserved remains of the wood of the shaft, which was sent for analysis.³ The results of the analysis undeniably showed that it was a species of white or common ash (*Fraxinus excelsior* L.), a type of wood exceptionally suitable for working. The same type of wood used for the making of the shaft was established in the case of the previously discovered early Carolingian winged spearhead from the same gravel plant (Sekelj Ivančan 2004, 110), as well as in the case of the spear from Cetina (Katalog 2000, 254).

The previously published paper, in the analysis of the first discovered winged spearhead from Jegeniš, included by then documented finds analogous in terms of morphological features, from Croatia and the neighbouring countries – Slovenia, Bosnia and Herzegovina,⁴ but also from the wider area of Europe, with all

2. U sklopu internacionalne izložbe *Charlemagne. The making of Europe* održane u nekoliko velikih europskih gradova, u koju je bila uključena i Hrvatska, svojom izložbom „Hrvati i Karolinzi“ prezentiranom u Muzeju hrvatskih arheoloških spomenika u Splitu 2000. god., javnosti su bili predstavljeni svi do tada poznati arheološki nalazi s tla Republike Hrvatske koji su na bilo koji način bili povezani s Karolinzima. Nalaze s područja sjeverne Hrvatske stručno i znanstveno obradio je prof. dr. sc. Željko Tomičić (Tomičić 2000, 142-161). Inače, veoma rijetki i sporadični karolinški nalazi na tom području u novije su vrijeme upotpunjeni dvama slučajno pronađenim karolinškim kopljima s krilcima od kojih se jedno prigodno donosi u ovom radu, u svečarskom broju Priloga Instituta za arheologiju.

3. Analizu je provela dr. sc. Metka Culiberg, znanstvena savjetnica Biološkog instituta „Jovana Hadžija“ ZRC SAZU u Ljubljani. Ovom joj se prigodom najsrdačnije zahvaljujem.

4. Radi se o pojedinačnim primjercima koplja s krilcima karolinške provenijencije, a na ovom mjestu izdvojeni su primjerci koji su oblikovno najbliži našem primjerku, oni s identično ukrašenim tuljcem. To je primjerak iz rijeke Cetine kod Trilja (Katalog 2000, 253-254, IV,120) i Poletnice kod Zadvarja (Jelovina 1976, 120, T. XC,3, fus. 212a; Vinski 1977-1978, 172-173, Sl. 2, fus. 181, 186; Vinski 1981, 20, 49, T. XIII,1, fus. 86; Katalog 2000, 356-358, IV,260a), te prije pronađeno koplje s krilcima iz Jegeniša (Sekelj Ivančan 2004). U hrvatskoj je literaturi objavljeno još jedno koplje kao „franačko koplje s krilcima iz 9. stoljeća“. Koplje ima nešto drukčije izvedene krajeve krilaca, ali identičan ukras (Kovač 2003, 87, kat. br. 106). Osim iz Hrvatske, poznati su i primjerci iz razorenog groba

2. All the until then known archaeological finds from the territory of the Republic of Croatia that are in any way connected with the Carolingians were presented to the public in the framework of the international exhibition *Charlemagne. The Making of Europe*, held in several major European cities, in which Croatia also took part by virtue of its exhibition “Croats and Carolingians”, displayed in the Museum of Croatian Archaeological Monuments in Split in 2000. Prof. Željko Tomičić performed the expert and scholarly analysis of the finds from the territory of northern Croatia (Tomičić 2000, 142-161). Otherwise very rare and sporadic Carolingian finds in that area have recently been complemented by two chance finds of Carolingian winged spearheads, one of which is published in this paper, in the celebratory volume of the Contributions of the Institute of Archaeology.

3. The analysis was carried out by Metka Culiberg, Ph.D., scientific advisor of the “Jovan Hadžija” Biological Institute of the SRC SASA in Ljubljana. I thank her most cordially on this occasion.

4. These are single pieces of winged spearheads of Carolingian origin, and in this place pieces were singled out that are morphologically closest to our piece – those with an identically decorated socket. This is a piece from the Cetina river near Trilj (Katalog 2000, 253-254, IV,120) and Poletnica near Zadvarje (Jelovina 1976, 120, Pl. XC,3, foot. 212a; Vinski 1977-1978, 172-173, Fig. 2, foot. 181, 186; Vinski 1981, 20, 49, Pl. XIII,1, foot. 86; Katalog 2000, 356-358, IV,260a), as well as the previously found winged spearhead from Jegeniš (Sekelj Ivančan 2004). There is also another spearhead, published in the Croatian literature as “a Frankish winged spearhead from the 9th century”. The ends of the wings of that spearhead

vantnom literaturom (Sekelj Ivančan 2004). Većina koplja s krilcima iz Hrvatske te susjednih država, Slovenije i Bosne i Hercegovine, opredijeljena je u vrijeme kraja 8. i početka 9. st., dok se poneka, robusnija, datiraju i kasnije, u 9. i početak 10. st., ali su nešto drukčije oblikovanog tuljca za nasad (Sekelj Ivančan 2004, 110-114).

Na ovom mjestu valjalo bi se samo ukratko osvrnuti na uklapanje ulomka novopronađenog koplja s krilcima u već razrađenu tipologiju. Prema tipologiji koju je za ovu vrst oružja predložio J. Petersen početkom 20. st., i drugo pronađeno koplje s krilcima iz šljunčare Jegeniš pripadalo bi njegovu tipu B, kao prije nađen primjerak iz iste šljunčare te njima najbliži primjerak iz rijeke Cetine i više komada kopalja iz Ljublanice (Petersen 1919, 23, Fig. 8). Prema novijoj Paulsenovoj tipologiji koplje bi, s obzirom na vitku liniju lista, ubrazdani ukras na tuljcu i razvijena krilca, pripadalo kopljima s krilcima tzv. *zrelog ili dovršenog oblika*, prema podjeli i paralelama iz Njemačke (Paulsen 1967, 257-264, Abb. 1,1-4). Prema daljnjoj podjeli ovog oblika, s obzirom na smještaj i oblik krilaca, novo koplje iz Jegeniša pripada tipu B ili prijelaznom obliku s tipa A na tip B po tipologiji ustanovljenoj za Austriju (Szameit 1987, 167-168, tip A – Abb. 2,1-3, tip B – Abb. 3,1, Abb. 5,2) koji se datiraju oko 800. god. i u početak 9. st.

Na očuvanom dijelu lista našeg koplja prostim okom nisu vidljivi tragovi damasciranja. Međutim, kako je za ovu vrstu predmeta uobičajena primjena jedne od tehnika damasciranja kao elementa tehnološkog procesa njegove izrade, naknadno je poduzeto rendgensko snimanje.⁵ Snimke su pokazale da je baza listolikog bodila damascirana, iako se bez dodatnih analiza destruktivnog karaktera ne može sa sigurnošću ustvrditi radi li se o *pravom (kovanom, lijevanom, sastavljenom, složenom) ili lažnom (zavarenom) damastu*. Za pretpostaviti je da se radi o *zavarenom* damastu kakav je uobičajen za ovu vrstu predmeta kao i kod prije pronađenog čitavoga koplja iz šljunčare Jegeniš, za koje je zaključeno kako je najvjerojatnije napravljeno u tehnici *zavarenog damasta* (o damasciranju više u prijašnjoj objavi s popisom literature: Sekelj Ivančan 2004, 117-118). Na cjelovito očuvanom primjerku koplja iz Jegeniša jasno je uočljiv motiv meandra i složeniji motiv riblje kosti, dok je kod novopronađenog ulomka koplja iz Jegeniša spajanje elemenata damastnih šipki rezultiralo jednostavnijim motivom riblje kosti (T. 1, RTG snimak). Prigodom objavljivanja našem primjerku analognih kopalja s krilcima sa srololikim

the relevant literature (Sekelj Ivančan 2004). Most of the winged spearheads from Croatia and the neighbouring countries, Slovenia and Bosnia and Herzegovina, were attributed to the end of the 8th and the beginning of the 9th century, while some, more robust pieces are dated also later, to the 9th and the beginning of the 10th century, only they have a somewhat differently shaped socket (Sekelj Ivančan 2004, 110-114).

It would be worth making a brief comment here of the fitting of the fragment of the newly-discovered winged spearhead into the already elaborated typology. According to the typology for this type of weapon put forward by J. Petersen at the beginning of the 20th century, the second discovered winged spearhead from the Jegeniš gravel plant would belong to his type B, same as the previously discovered piece from the same gravel plant and the piece that bears the most resemblance to them, from the Cetina river, as well as several pieces from the Ljublanica river (Petersen 1919, 23, Fig. 8). According to the recent P. Paulsen typology, considering the slender line of the leaf, the grooved decoration on the socket and developed wings, the spearhead would belong to the winged spearheads of the so-called *mature or completed type*, according to the classification and parallels from Germany (Paulsen 1967, 257-264, Fig. 1,1-4). In view of the further classification of that type, regarding the position and shape of the wings, the new spearhead from Jegeniš belongs to type B or the transitional type from A to B after the typology established for Austria (Szameit 1987, 167-168, type A – Fig. 2,1-3, type B – Fig. 3,1, Fig. 5,2), which are dated to around 800 and to the beginning of the 9th century.

The preserved part of the leaf of our spearhead does not reveal visible traces of damascening. However, as one of the damascening techniques is habitually used as an element of the technological process of the production of this class of artefacts, X-ray imaging was subsequently carried out.⁵ The images showed that the base of the leaf-shaped spearhead was damascened, although without additional analyses of a destructive nature it can not be established with certainty whether it was the *true (wrought, cast, composite, complex) or false (welded) damascene*. It can be presumed that this was a *welded damascene*, as is usual for this class of artefacts, same as in the case of the previously discovered complete spearhead from the Jegeniš gravel plant – regarding which it was concluded that it was most probably made by the *welded damascene* technique (more about damascening in the previous publication with bibliography: Sekelj Ivančan 2004, 117-118). The completely preserved spearhead from Jegeniš shows a clearly visible meander motif and a more complex fish-bone motif, while in the case of the newly-discovered spearhead

are rendered somewhat differently, but the decoration is identical (Kovač 2003, 87, Cat. No. 106). Except from Croatia, there are also known pieces from a destroyed grave from Hatelji “Dabar Polje” near Stolac (Miletić 1963, 160-161, Fig. 7b; Vinski 1977-1978, 186; Vinski 1985, 69, Fig. 2,3; Katalog 2000, 262, IV,137) and the so-called second spearhead from Mogorjelo (spearhead a.) (Miletić 1979, Pl. I-II, Pl. IV; Vinski 1981, 20, 49, Pl. XIII,2, foot. 87; Vinski 1985, 67, Fig. 1,3; Katalog 2000, 282, IV,172) from Bosnia and Herzegovina, in addition to several pieces from Slovenia, from the Ljublanica river near Rakova Jalša, south of Ljubljana, of which two pieces are lacking the wings even though they are identically decorated (Svoljšak et al., 1997, 259, 262, Pl. 12,7, Pl. 16,3, Pl. 18,3; Fig. 34; Bitenc, Knific 1997, 22, 26, Fig. 17; 101, 102, Fig. 332-334). The hoard of weapons from Sebenj by Zasip near Bled also contains a spearhead with identical decoration, but without wings (Pleterski 1987, 241-248, Fig. 6a-7; Bitenc, Knific 2001, 94-95, Fig. 311,13). There is also a wingless spearhead with a decorated socket, deposited in the National Museum of Slovenia in Ljubljana, originating from an unknown site (Bitenc, Knific 2001, 102, Fig. 333-334).

5. I thank Milan Rastović from the Welding Institute for the X-ray image of the spearhead.

iz Hatelja „Dabar polje“ kod Stoca (Miletić 1963, 160-161, sl. 7b; Vinski 1977-1978, 186; Vinski 1985, 69, sl. 2,3; Katalog 2000, 262, IV,137) te tzv. drugo koplje iz Mogorjela (koplje a.) (Miletić 1979, T. I-II, T. IV; Vinski 1981, 20, 49, T. XIII,2, fus. 87; Vinski 1985, 67, sl. 1,3; Katalog 2000, 282, IV,172) iz Bosne i Hercegovine, te nekoliko primjeraka iz Slovenije, iz rijeke Ljublanice kod Rakove Jalše, južno od Ljubljane od kojih dva primjerka nemaju krilca iako su identično ukrašena (Svoljšak et al. 1997, 259, 262, T. 12,7, T. 16,3, T. 18,3; sl. 34; Bitenc, Knific 1997, 22, 26, sl. 17; 101, 102, sl. 332-334). Ostava oružja iz Sebenja pri Zasipu kraj Bleda također ima identično ukrašeno koplje, ali bez krilaca (Pleterski 1987, 241-248, sl. 6a-7; Bitenc, Knific 2001, 94-95, sl. 311,13), a poznato je i koplje bez krilaca, ukrašeno tuljca koje je pohranjeno u Narodnom muzeju Slovenije u Ljubljani, a potječe s nepoznatog nalazišta (Bitenc, Knific 2001, 102, sl. 333-334).

5. Zahvaljujem Milanu Rastoviću iz Zavoda za zavarivanje na rendgenskom snimku koplja.

žljebastim ukrasom na tuljcu, nisu doneseni detalji o vrsti damasciranja, osim konstatacije da su koplja s krilcima iz rijeke Cetine, Poletnice i Mogorjela (koplje a.) damascirana, a iz crteža je vidljivo da su damascirana i dva koplja s krilcima iz Ljubljane (inv. br. 20269; inv. br. V329) (Sekelj Ivančan 2004, 118).

Kako se nadalje ne bi ponavljala ranije iznesena mišljenja, valja se osvrnuti samo na nove nalaze ranosrednjovjekovnih koplja s krilcima. Od vremena objavljivanja spomenutog teksta do danas, u Hrvatskoj je evidentiran i objavljen još jedan slučajni nalaz koplja s krilcima. Pronađen je pri vađenju šljunka iz rijeke Kupe pokraj Lasinjske Kiselice, na mjestu pretpostavljenog staroga gaza preko rijeke (Bekić, 2004, 165-166, sl. 4-5). Koplje je ponešto drukčije oblikovano od dosadašnjih poznatih primjeraka te ga autor datira u vrijeme 8. st., možda prvu polovicu, a s obzirom na nejasne povijesne prilike u Pokuplju i Posavini u to vrijeme, otvara i mogućnost da je koplje u kraj oko Kupe mogao „...donijeti neki franački vojnik, ili ga je izgubio neki slavenski vojnik koji je sudjelovao u borbama s Avarima na strani Franaka.“ (Bekić 2004, 173-174). Prema autoru, ukoliko je koplje bilo u upotrebi tijekom nešto dužeg vremena, moglo bi ga se vezati uz prodor franačke vojske prema Ljudevitovom uporištu u Sisku, te bi ono tada, zajedno s drugim ranokarolinškim nalazima s ovog područja, ocrtavalo granicu Ljudevitove kneževine (Bekić 2004, 175-176). Činjenica da je pronađeno u rijeci s jedne strane ukazuje na moguću pretpostavku o kontroli prijelaza preko rijeke, ali i već općeprihvaćena razmišljanja o nalazima koplja s krilcima iz rijeka kao obredna deponiranja. Tako je i u objavi novog slučajnog nalaza ove vrste ranosrednjovjekovnog koplja iz okolice Freiburga, izneseno mišljenje o obrednom deponiranju pronađenog koplja, uz obrazloženje da većina primjeraka iz različitih europskih država predstavlja slučajni nalaz iz rijeka, a rijetko kada su grobni nalaz. Autor se, s obzirom na odnos kratkoće tuljca spram izdužene, veoma uske oštrice za koju smatra da je značajka mlađeg vremena, odlučuje za vrijeme 9. i 10. st. (Gottschalk 2003, 29, Abb. 1). Sličnu, izduženu i relativno usku oštricu ima i naše koplje, ali ga se ipak ne bi moglo vezati uz predloženu dataciju, kako zbog njegove gracilnosti, tako i zbog karakterističnog žljebastog ukrasa na tuljcu. Naime, svi poznati primjerci s identičnim ukrasom iz Hrvatske i susjednih zemalja zasigurno pripadaju nešto starijem razdoblju kraja 8. i početka 9. st. (Sekelj Ivančan 2004).

Da koplja s krilcima nisu isključivo slučajni nalazi izvan databilnog konteksta i bez ostalih priloga koji bi mogli pomoći u preciznijem određivanju vremena njihova nastanka i upotrebe, ukazuje i novi nalaz ranosrednjovjekovnog ratničkoga groba iz Hradca na Moravici, na Šleskomoravskoj granici. Uz koplje s krilcima damascirane oštrice, keramički lonac, željeznu sjekiru i nož, pronađen je i par teških ostruga karolinškog porijekla, s pločicom za zapinjanje. Autor čitav grob, pa tako i koplje, datira u vrijeme prve polovice 9. st., s mogućom preciznijom datacijom oko 850. god., s obzirom

fragment from Jegeniš the composition of the elements of damascene rods resulted in a simpler fishbone motif (Pl. 1, X-ray image). In the publication of the analogous pieces of winged spearheads with cordate grooved decoration on the socket, no details about the type of damascening were given, except for the observation that the winged spearheads from the Cetina river, from Poletnica and Mogorjelo (spearhead a) are damascened, and from the drawing it is visible that the two winged spearheads from the Ljubljana are likewise damascened (Inv. No. 20269; Inv. No. V329) (Sekelj Ivančan 2004, 118).

In order to avoid repeating the opinions put forward previously, we shall review only the new finds of early mediaeval winged spearheads. From the time of publication of the mentioned text until today, there has been another documented and published chance find of a winged spearhead. It was discovered during the extraction of gravel from the Kupa river near Lasinjska Kiselica, on the spot of the presumed old ford across the river (Bekić 2004, 165-166, Fig. 4-5). The shape of the spearhead differs somewhat from the pieces known so far and the author dates it to the 8th century, perhaps its first half, and considering the unclear historical circumstances in Pokuplje and Posavina at the time he also puts forward the possibility that the spear was brought to the area around the Kupa "...by a Frankish soldier, or it may have been lost by a Slavonic soldier who took part in the battles against the Avars on the side of the Franks." (Bekić 2004, 173-174). In the author's opinion, if the spear was in use during a somewhat longer period of time, it could be connected with the incursion of the Frankish army toward Ljudevit's stronghold in Sisak, and it would then, together with some other early Carolingian finds from this area, outline the border of Ljudevit's principedom (Bekić 2004, 175-176). The fact that it was found in a river points on the one hand to the possible assumption about the control of the river crossing, but on the other to the already widely accepted ideas about the riverine finds of winged spearheads as votive depositions. Thus in the publication of a new chance find of this type of early mediaeval spearhead from the surroundings of Freiburg the opinion was put forward that the discovered spearhead had been ritually deposited, with the explanation that most specimens from various European countries are chance finds from rivers and rarely grave finds. Having taken into consideration the shortness of the socket with regard to the elongated and very narrow blade, which he considers to be a later trait, the author decided to date it to the period of the 9th and 10th century (Gottschalk 2003, 29, Fig. 1). Our spearhead also has a similar, elongated and relatively narrow blade, but even so it could not be linked with the proposed date, due to its gracility as well as to the characteristic grooved decoration on the socket. All known pieces with identical decoration from Croatia and neighbouring countries certainly belong to a somewhat older period – the end of the 8th and the beginning of the 9th century (Sekelj Ivančan 2004).

That winged spearheads are not exclusively chance finds without a datable context and without accompanying goods that might help in a more precise determination of the date of their production and use, is shown also by a new find of an early mediaeval warrior grave from Hradec Nad Moravicí, on the border between Silesia and Moravia. A pair of heavy spurs of Carolingian origin was found together with a winged spearhead with a damascened blade, a ceramic pot, an iron axe and a knife. The author dates the entire grave, including the spearhead, to the first half of the 9th century, with a possibly more precise dating to around 850, considering the dating of this type of spurs (Kouřil 2004, 69,

na dataciju ovog tipa ostruga (Kouřil 2004, 69, Obr. 6-8).⁶

Kao prilog preciznijim datacijama ove vrste nalaza provedena je radiokarbonska analiza komada očuvanog drva iz tuljca. Dobiveni rezultati ukazuju na određenije vrijeme samog nastanka koplja, a ne o kraćem ili dužem razdoblju njegove upotrebe, odnosno njegova odlaganja. Drvo jase na bilo je upotrijebljeno za motku našega koplja oko godine calAD 779.⁷ Još je na jednom primjerku iz Hrvatske, koplju iz Cetine, provedena identična C¹⁴ analiza, pri čemu je drvo motke cetinskoga koplja datirano u vremenski okvir između 770. i 990. god., a samo koplje datirano je u posljednju trećinu 8. st. (Katalog 2000, 253-254, IV.120).

Ovakva datacija uklapa se u opću sliku opredjeljenja kopalja s krilcima, posebno onih ukrašenih žlijebljenjem na tuljcu, upravo u vrijeme oko 800. god. S druge strane, najpoznatije koplje s krilcima ukrašeno identičnim srololikim žljebastim urezima je njemačko Sveto koplje sv. Mauricusa, koje pripada vremenu prve polovice 11. st. Kraljevsko koplje kao vladarsku insigniju, ne možemo izravno povezati s našim kopljem jer je ono načinjeno od franačkog koplja s krilcima na kojem je načinjena rupica na oštrici u koju je stavljena relikvija križa Isusova (čavao iz Kristova raspela, Steuer 1999, 319). Rupica je vezana srebrnom žicom, a dvije iskovane lamele koje su bile pričvršćene s križnim trakama bile su vjerojatno izrezane od metala koji je bio uzet iz oštrice. Na donjem dijelu oštrice ovijena je zaštitna traka. Općeprihvaćeno je mišljenje kako se kod Svetog koplja „s gotovo stopostotnom sigurnošću“ može govoriti o sekundarnoj upotrebi starijeg, franačkoga (ili ranokarolinškog) koplja s krilcima (Kovács 2000, 902-903).

O tome zašto je za ovako važan predmet uzeto upravo koplje čiji je tuljac ukrašen žljebastim ukrasom, možemo samo nagađati. Je li razlog gracilnost koplja, njegova, uvjetno rečeno, ljepota ukrasa, ostat će nam nepoznanica. Uvriježeno je mišljenje kako su sva koplja s krilcima izrađena u radionicama na rajnskom i gornjedunavskom području, te da je ova vrsta obrta vezana za velike centre u središtu Franačkog kraljevstva (Böhne, Dannheimer 1961, 111, 121). Tako su se i koplja s karakterističnim ukrasom urezanih linija u obliku šiljastih lukova proizvedena u centru države Franačke i to u drugoj polovici 8. st. (Ypey, 1982, 246). Ovoj skupini nesumnjivo pripada primjerak sekundarno upotrijebljen za Sveto

6. Kombinacija damasciranog oružja s ostrugama koje imaju pločicu za zapinjanje poznata je s još nekih lokaliteta datiranih u prvu polovicu 9. st. (Pohansko, Pobedim), a autor ih u nastojanju što preciznijeg datiranja, stavlja najranije u drugu četvrtinu 9. st. Također smatra da su i koplja s krilcima i ostruge bili odraz statusnog simbola, tj. označavali su pripadnost društvenoj eliti i bili su izrađivani po narudžbi. Grob br. 1 iz Hradeca s ovom kombinacijom priloga pronađenih uz pokojnika pripisuje nekom vođi vojske (vojnom kapetanu moravskog garnizona) koji je pokopan sa svojim insignijama oko 850. god. (Kouřil 2004, 75). Damascirana koplja s krilcima na nekim grobljima, kao npr. na groblju Sopronkőhida datirana su u ranu fazu zaposjedanja groblja od prijelaza 8. u 9. st. odnosno do kraja prve trećine 9. st., dok se na istom groblju pojavljuju i ostruge sa sustavom za zakopčavanje koje su datirane oko sredine 9. st., odnosno najkasnije do kraja druge trećine 9. st. (Szöke 2004, 377, Abb. 3,14, Abb. 4-7,8; Szöke 2004a,135-136, 138-139, fig. 3).

7. AMS-C¹⁴ datacija izrađena je u Leibniz Labor für Altersbestimmung und Isotopenforschung, Christian-Albrechts Universität Kielu. Najveća vjerojatnost od 33,8 % starosti drva je još između (One Sigma Range) cal AD 788.-830. god.; (Radiokarbon Age: BP 1223 ± 25). Kalibracija je provedena prema „CALIB rev 4.3“ (Dana set 2), Stuiver et al., Radiocarbon 40, 1041-1083, 1998.

Fig. 6-8).⁶

A radiocarbon analysis of the preserved piece of wood from the socket was carried out as a contribution to the more accurate dating of this type of find. The obtained results point to a more specific time of the production of the spear, not of the shorter or longer period of its use or deposition. The ash wood was used for the shaft of our spear around the year cal AD 779.⁷ An identical C¹⁴ analysis was carried out on another piece from Croatia, a spear from the Cetina, whose shaft wood was dated to the chronological frame between 770 and 990, and the spear itself was dated to the last third of the 8th century (Katalog 2000, 253-254, IV.120).

Such dating fits the general picture of placing the winged spearheads, particularly those with grooved decoration on the socket, precisely to the period around 800. On the other hand, the most renowned winged spearhead decorated with identical cordate grooved incisions is the German Holy Spear of St. Maurice, which belongs to the first half of the 11th century. A royal spear as an insignia of a ruler can not be directly connected with our spear as the former was made from the Frankish winged spearhead on which a hole was perforated on the blade, into which a relic from the Cross of Jesus was inserted (a nail from the crucifix of Christ, Steuer 1999, 319). The hole is connected with a silver wire, and two small metal sheets attached with cross-straps were probably cut from the metal taken from the blade. A protective stripe is wrapped around the lower part of the blade. There is a unanimous opinion that the Holy Spear is an “almost one hundred percent certain” case of the secondary use of an older, Frankish (or early Carolingian) winged spearhead (Kovács 2000, 902-903).

We can only conjecture as to why it was precisely a spear whose socket was decorated with grooving that was used for such an important object. It will remain a mystery whether it was the gracility of the spear, its, so to speak, ornamental beauty. There is a widely held opinion that all winged spearheads were made in the workshops in the area of the Rhine and the Upper Danube, and that this type of craft was connected with large centres in the middle of the Frankish kingdom (Böhne, Dannheimer 1961, 111, 121). Thus the spearheads with a characteristic decoration of incised lines in the shape of pointed arches were produced in the centre of the Frankish state, in the second half of the 8th century (Ypey, 1982, 246). The piece secondarily used for the Holy Spear undoubtedly belongs to this group, same as our specimens from Jegeniš and Cetina.

It is not possible to ascertain at present whether all the spear-

6. A combination of damascened weapons with spurs with a fastening plaque is known from some other sites dated to the first half of the 9th century (Pohansko, Pobedim), and the author, aiming at the greatest accuracy possible, places them in the second quarter of the 9th century at the earliest. He also thinks that both the winged spearheads and the spurs functioned as symbols of status, i.e. they marked someone as belonging to the social elite and they were usually commissioned. He attributes grave No. 1 from Hradec with this combination of goods found next to the deceased person to a military leader (a military captain of the Moravian garrison), buried with his insignia around 850 (Kouřil 2004, 75). Damascened winged spearheads are dated at some cemeteries, e.g. at the Sopronkőhida cemetery, to the early phase of occupation of cemeteries from the transition of the 8th to the 9th century, that is until the end of the first third of the 9th century, while the same cemetery yielded also the spurs with a buckling system dated to around the mid-9th century, that is until the end of the second third of the 9th century at the latest (Szöke 2004, 377, Fig. 3,14, Fig. 4-7,8; Szöke 2004a,135-136, 138-139, Fig. 3).

7. AMS-C¹⁴ dating was carried out in the Leibniz Labor für Altersbestimmung und Isotopenforschung, Christian-Albrechts Universität in Kiel. The highest probability of 33,8 % for the age of wood is with a one-sigma range of cal AD 788-830 (Radiocarbon age: BP 1223 ± 25). The calibration was carried out according to “CALIB rev 4.3” (Dana set 2), Stuiver et al., Radiocarbon 40, 1041-1083, 1998.

koplje, ali i naši primjerci iz Jegeniša i Cetine.

Potječu li sva, na isti način ukrašena, koplja iz iste radionice, za sada nije moguće utvrditi. Razlika među njima očituje se jedino u ukrasu na krilcima koji se na sličnim kopljima s područja Hrvatske, Bosne i Hercegovine i Slovenije⁸ sastoji od okomitih uzlijebljenih linija, dok je sekundarno upotrijebljeno koplje s krilcima za Sveto koplje, ukrašeno žlijebljenim križićem na svakom krilcu. Provedena analiza drva iz triju koplja identično ukrašena srcolikom ukrasom, koja su posljednjih godina nađena na tlu Hrvatske, i to iz onog iz Cetine-Trilja, te iz naša dva s Jegeniša, ukazuju na upotrebu iste vrste drva za motku koplja. Ova činjenica sama po sebi ne znači da ona potječu iz iste radionice, ali ne treba je niti zanemariti. U obradi kopalja s krilcima iz pokrajine Švapske, P. Paulsen za četiri koplja (Salach, Riedheim, Buchau, Tuttlingen), koja su ukrašena karakterističnim žljebastim ukrasom na tuljcu, izražava uvjerenje da zasigurno potječu iz istog vremena (iz oko 800. god.) i iz iste radionice (Paulsen 1967, 257, Abb. 1). I za E. Szameita upitno je jesu li različiti oblici krilaca, tuljaca, damasciranja i sama težina kopalja značajni za kronološka pitanja ili su oni ipak odraz različitih radionica. Ne sumnja da su upravo primjerci sa žljebastim ukrasom odraz kraja kasno-merovinškog i rane faze karolinškog doba te da se učestalije pojavljuju na sjevernim i istočnim rubovima Franačkoga kraljevstva (Szameit 1987, 169). Tek kada će biti puno više različitih analiza, kao npr. vrste drva, RTG snimaka, metalografskih, fraktografskih i analiza ispitivanja tvrdoće metala, moći će se sa sigurnošću određivati provenijencija tog oružja s obzirom na pojedinačne radionice.

Ukoliko ipak prihvatimo razmišljanja P. Paulsena, pa konačno i E. Szameita, da se koplja s karakterističnim srcolikom ukrasom mogu povezati s pojedinačnom radionicom, možemo nadalje razmišljati u tom pravcu da se možda radi o jednoj od cjenjenijih rajnskih radionica, čiji se ugled i značaj prenio i na sljedeće naraštaje te bi to moglo biti razlogom upotrebe upravo ovog tipa koplja s krilcima za predmet koji odražava transfer ideja i stvari u vremenu druge polovice 10. i početka 11. st. To je vrijeme pojave mnogih novih dinastija, kao npr. Premyslovića ili Arpadovića koji su htjeli legitimirati svoju moć upotrebom određenih simbola, primjerice, kao Sveto koplje. Ideja koplja kao insignije, oružja koje se povezivalo s političkom i vojnom snagom, vezivala se i za korišćene kršćanstva, i to sekundarnom upotrebom predmeta pretvorenog u relikviju (Dulinicz 2004, 63-64, Ryc. 1-2). Ove ideje prevladavale su u čitavoj Europi tog vremena,⁹ a do danas su nam ostala sačuvana samo dva takva predmeta, spomenuto njemačko koplje sv. Mauriciusa i tzv. poljsko koplje sv. Mauriciusa¹⁰ (Dulinicz 2004, 79, Ryc. 11). O češkom koplju sv. Vaclava na kojem je bila izvješena zastavica veoma se malo zna (Třeštík, Merhautová 2000, 904-906), dok je koplje sv. Stjepana

8. Identičan se ukras nalazi na tuljcima kopalja s krilcima iz rijeke Cetine, Hatelja i Mogorjela (a.), te na nekim primjercima iz rijeke Ljubljanice. Prije pronađeno koplje s krilcima iz Jegeniša nema ukrašena krilca.
9. Kraljevska se koplja, kao vladarske insignije, prestaju pojavljivati u pisanim izvorima i na prikazima nakon 1045. god., kada je počela upotreba žezla. Prvi kralj prikazan sa žezlom je Andrija I. (Kovács 2000, 903).
10. Radi se o koplju koje je izliveno prema uzoru na njemačko koplje sv. Mauriciusa koje se čuva u Krakovu. Smatra se da je spomenuto koplje Oton III. na svom putu za Gniezno darovao Bolesławu Hrabrom. O tome aktu piše Gallus Anonymus početkom 12. st. (Kovács 2000, 902; Dulinicz 2004, 79, Ryc. 11).

heads decorated in the same way come from the same workshop. The differences between them lie only in the decoration on the wings, which on the similar spearheads from Croatia, Bosnia and Herzegovina and from Slovenia⁸ consists of vertical grooved lines, whereas the winged spearhead secondarily used for the Holy Spear is decorated with a grooved cross on each wing. The analysis carried out on the wood from the three spears with identical cordate decoration, found in recent years in the territory of Croatia – the one from the Cetina-Trilj and the two of ours from Jegeniš, indicate the use of the same wood type for the spear shaft. This fact by itself does not mean that they come from the same workshop, but it should not be neglected either. In his analysis of winged spearheads from the province of Swabia, for four spears (Salach, Riedheim, Buchau, Tuttlingen) decorated with the characteristic grooved decoration on the socket, P. Paulsen believes that they most certainly date to the same period (around 800) and come from the same workshop (Paulsen 1967, 257, Fig. 1). E. Szameit also finds it questionable whether the different forms of the wings, sockets, damascening and the very weight of the spearheads are relevant for chronological issues or they only reflect the different workshops. He does not doubt that precisely the pieces with grooved decoration reflect the end of the late Merovingian and early phase of the Carolingian period and that they appear with increasing frequency in the northern and eastern rims of the Frankish kingdom (Szameit 1987, 169). Only when many more different analyses have been carried out, e.g. an analysis of the type of wood, X-ray images, metallographic, a fractographic analysis and an analysis of the metal hardness tests, will we be able to determine with certainty the origin of those weapons with regard to individual workshops.

If, we accept P. Paulsen's, and ultimately also E. Szameit's opinion, that the spearheads with the characteristic cordate decoration can be connected with an individual workshop, we can further pursue the thought that it may be one of the more esteemed Rhinish workshops, whose reputation and importance was transferred also to the subsequent generations, which is what may have been the reason for the use of precisely this type of winged spearhead for the object that reflects the transfer of ideas and things in the period spanning the second half of the 10th and the beginning of the 11th century. This is a time when many new dynasties appear, e.g. the Přemyslids or the Arpads, who wanted to legitimise their authority by the use of certain symbols, for instance the Holy Spear. The idea of the spear as an insignia, a weapon connected with political and military power, was linked also with the roots of Christianity, through the secondary use of an object turned into a relic (Dulinicz 2004, 63-64, Fig.1-2). These ideas were dominant throughout Europe of that time,⁹ and until the present only two such objects have been preserved – the mentioned German spear of St. Maurice and the so-called Polish spear of St. Maurice¹⁰ (Dulinicz 2004, 79, Fig. 11). Very little is known about the Czech spear of St. Vaclav, on which a pennant was suspended (Třeštík, Merhautová 2000, 904-906), while the spear of St. Stephen is known from depictions on other objects

8. Identical decoration is found on the sockets of winged spearheads from the Cetina river, from Hatelja and Mogorjela (a.), and on some pieces from the Ljubljanica river. The wings of the previously discovered winged spearhead from Jegeniš are not decorated.
9. Royal spears as insignia of rulers cease to appear in the written sources and on depictions after 1045, when sceptres were introduced. The first king to be represented with a sceptre was Andrew I (Kovács 2000, 903).
10. This is a spearhead cast on the model of the German spearhead of St. Maurice, which is kept in Cracow. It is believed that the mentioned spear was given by Otto III to Boleslaw the Brave on his way to Gniezno. This deed was described by Gallus Anonymus at the beginning of the 12th century (Kovács 2000, 902; Dulinicz 2004, 79, Fig. 11).

poznato kao prikaz s drugih predmeta (Dulnicz 2004, 71-72, Ryc. 6-7). Iako se vrijednost ovih predmeta odnosila prvenstveno na okolnosti njihove pojave na povijesnoj pozornici, a manje na njihov izvorni izgled, ovdje svakako treba imati na umu moguće razloge sekundarnog korištenja upravo ovog tipa koplja s krilcima ukrašenog tuljca.

S obzirom na vrlo rijetke nalaze ove vrste na našim prostorima i šire, izuzetno je indikativna okolnost da dva identično ukrašena koplja s krilcima datirana u isto vrijeme, tj. sam kraj 8. i početak 9. st., potječu s istog položaja južno od rijeke Drave. Stavljajući novopronađeno koplje s krilcima iz šljunčare Jegeniš u povijesni i prostorni kontekst istočnih rubova Franačkog kraljevstva, potrebno je ponoviti neka od prije iznesenih razmišljanja. Naime, u bližoj i daljoj okolini šljunčare Jegeniš pronađeno je više predmeta koji se mogu opredijeliti u to vrijeme. Radi se o slučajnim nalazima nekoliko ranosrednjovjekovnih željeznih sjekira i nožića (Sekelj Ivančan 2004, 120, fus. 29-30), zatim iz nedaleke Šoderice nekoliko sjekira i kratki mač franačkog obilježja, datirani oko 800. god. (Marković, Zvjerac 2000, 56-57), te željezni bojni nož s dugim trnom za nasad drška s kraja 8. st. i željezna sablja također datirana u kraj 8. st. (Katalog 2000, 90, kat. br. II, 10-11; Tomičić 2000, 154). Koncentracija nalaza datiranih u kraj 8. i početak 9. st. pronađenih upravo na širem prostoru oko šljunčara, kao i nalaz dvaju identičnih koplja s krilcima, uz okolnost da s istog položaja na Jegenišu potječu i nalazi lubanje starijeg muškarca, žene i djeteta te životinjske mandibule konja, potvrđuju naš zaključak o postojanju ranosrednjovjekovnog groblja na tom mjestu (Sekelj Ivančan 2004, 120, 122).

Sam prostor šljunčare nalazi se na veoma pogodnom mjestu u blizini kojeg je vjerojatno bio i prijelaz preko rijeke Drave, ali i glavna komunikacija u prodiranju franačke vojske iz pravca zapada, uzduž Mure i Drave prema istoku na samom kraju 8. i početku 9. st. (Tomičić 1984, 226-228; Sekelj Ivančan 2004, 122). Ovladavanje riječnim prijelazom i pretpostavljenim cestovnim pravcem, kasnije nazvanim *viae Colomani Regis* (Demo 1983-1984, 233-234), kao i komunikacija duž rijeke Drave, težnja je stanovništva svih povijesnih razdoblja, pa tako i ranosrednjovjekovnog. Ono podrazumijeva određeni manji ili veći intenzitet naseljenosti, odnosno razvoj naselja i groblja u njegovoj blizini. Na žalost, arheološku potvrdu o njegovu egzistiranju vjerojatno nikad nećemo moći dobiti jer je pretpostavljeno naselje uništila eksploatacija šljunka. Do nas će vjerojatno i nadalje dolaziti potvrde o postojanju pretpostavljenog ranosrednjovjekovnog groblja, ali samo u tragovima, u vidu slučajnih nalaza.

Na kraju valja ponoviti kako je novi nalaz koplja s krilcima izvađen na istom mjestu iz šljunčare Jegeniš kao i prije pronađen primjerak, još jedan doprinos ranije iznesenom mišljenju o postojanju groblja na tom mjestu, koje je zauvijek uništeno iskorištavanjem šljunka.

(Dulnicz 2004, 71-72, Fig. 6-7). Although the value of these objects related primarily to the circumstances of their appearance on the historical stage and less on their original shape, we definitely ought to keep in mind here the possible reasons for the secondary use precisely of this type of winged spearhead with a decorated socket.

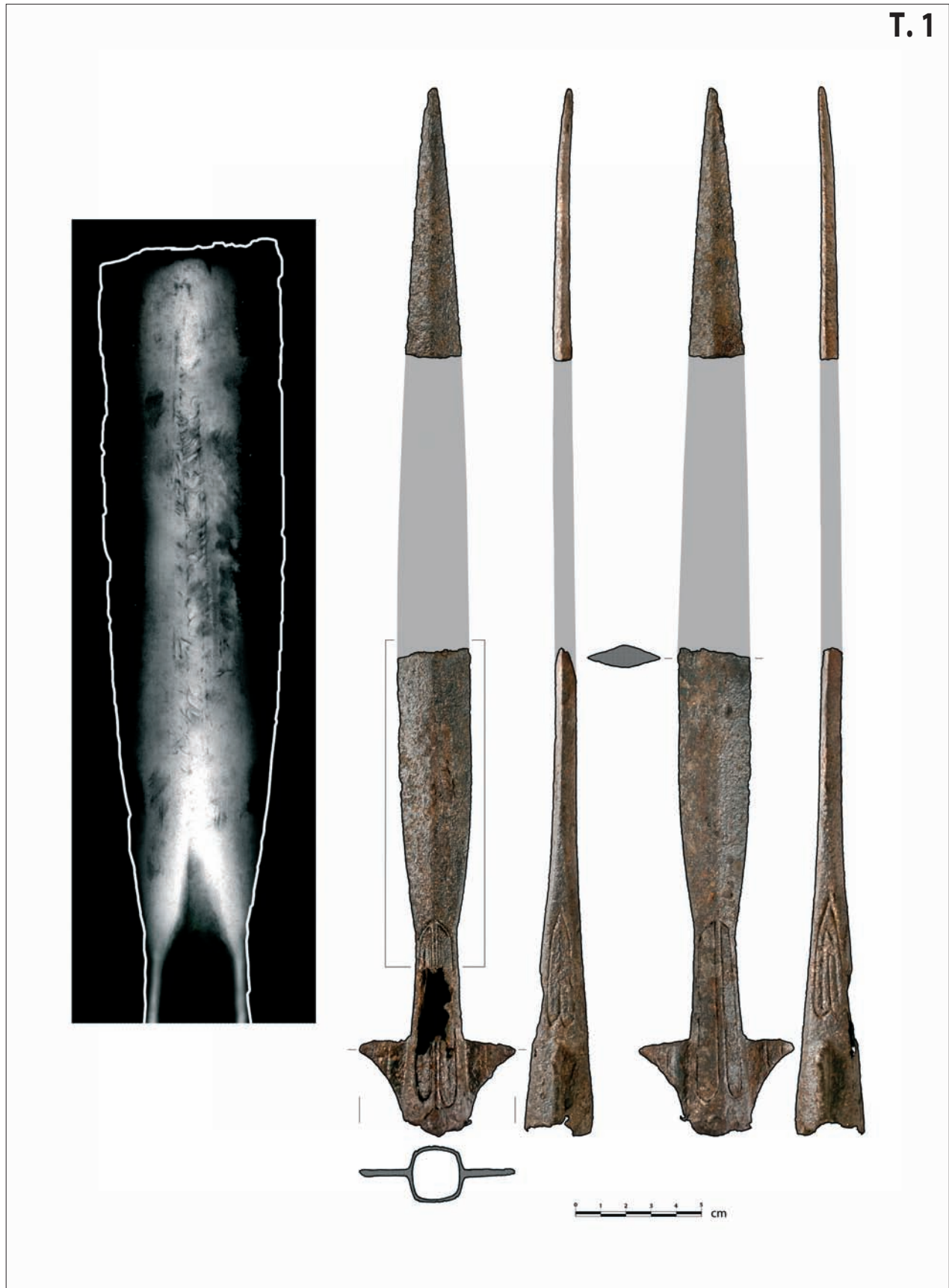
Taking into consideration that finds of this type are very rare in our lands and wider abroad, it is exceptionally indicative that two identically decorated winged spearheads dated to the same time, i.e. the very end of the 8th and the beginning of the 9th century come from the same position south of the Drava river. By placing the newly-discovered winged spearhead from the Jegeniš gravel plant into the historical and spatial context of the eastern rim of the Frankish kingdom, we need to repeat some of the previously mentioned observations. Several objects were found in the closer and wider surroundings of the Jegeniš gravel plant that can be attributed to the same period. These are chance finds of several early mediaeval iron axes and small knives (Sekelj Ivančan 2004, 120, foot. 29-30); further, from nearby Šoderica, several axes and a short sword of Frankish features, dated around 800 (Marković, Zvjerac 2000, 56-57), and an iron battle knife with a long tang for hafting the handle from the end of the 8th century and an iron sable, likewise dated to the end of the 8th century (Katalog 2000, 90, Cat. No. II, 10-11; Tomičić 2000, 154). The concentration of finds dated to the end of the 8th and the beginning of the 9th century discovered precisely in the wider zone around the gravel extraction plants, as well as the find of two identical winged spearheads, in addition to the fact that the same position in Jegeniš yielded also the finds of skulls of an elderly man, a woman and a child, as well as a horse mandible, corroborate our conclusion about the existence of an early mediaeval cemetery at that position (Sekelj Ivančan 2004, 120, 122).

The zone of the gravel plant itself is situated on a very convenient spot and the crossing over the Drava river probably lay in its vicinity, same as the main communication for the advance of the Frankish army from the west, along the Mura and the Drava eastwards at the very end of the 8th and the beginning of the 9th century (Tomičić 1984, 226-228; Sekelj Ivančan 2004, 122). The control of the river crossing and the presumed land route, later called *viae Colomani Regis* (Demo 1983-1984, 233-234), as well as a communication along the Drava river, was the aim of populations in all historic periods, including the early Middle Ages. Its prerequisite is a more or less pronounced intensity of settlement, that is, development of a settlement and a cemetery in its vicinity. Unfortunately, we shall probably never obtain an archaeological confirmation of its existence, considering that the presumed settlement was destroyed by gravel exploitation. We will probably continue receiving confirmation of the existence of the presumed early mediaeval cemetery, but only in traces, in the form of chance finds.

At the end it should be repeated that the new find of a winged spearhead, extracted from the Jegeniš gravel plant on the same spot as the previously found piece, represents yet another contribution to the previously expressed opinion about the existence of a cemetery at that site, irreversibly destroyed by gravel exploitation.

LITERATURA / BIBLIOGRAPHY :

- Bekić L., 2004, Novi nalaz ranosrednjovjekovnog koplja s krilcima, VAMZ XXXVI (2003), Zagreb, 165-179.
- Bitenc P., Knific T., 1997, Arheološko najdišče Ljubljana, Argo, Časopis slovenskih muzejev 40/2, Ljubljana, 19-32.
- Bitenc P., Knific T., 2001, *Od Rimljana do Slovanov*, Predmeti, katalog izložbe, Narodni muzej Slovenije, Ljubljana
- Böhne C., Dannheimer H., 1961, Studien an Wurbunklingen des frühen Mittelalters, BayerVorgeschBl 26/1, München, 107-122, T. 13-19, Beil. IV-V.
- Demo Ž., 1983-1984, Srednjovjekovni mačevi u Muzeju grada Koprivnice, VAMZ XVI-XVII, Zagreb, 211-240, T. 1-7.
- Dulinicz M., 2004, Lancea Sacra – Wędrowka idei i przedmiotów, Wędrowka rzeczy i idei w średniowieczu, ed. S. Możdziej, Spotkania Bytomskie 5, Wrocław, 61-84.
- Gottschalk R., 2003, Eine karolingische Flügellanze aus dem Südschwarzwald, Archäologische Nachrichten aus Baden 67, Karlsruhe, 27-30.
- Jelovina D., 1976, *Starohrvatske nekropole na području između rijeka Zrmanje i Cetine*, Split
- Katalog 2000, *Hrvati i Karolinzi*, Katalog, Katalog izložbe, Muzej Hrvatskih arheoloških spomenika, drugi dio, Split
- Kovač M., 2003, *Ubojite oštrice. Hladno oružje na području Hrvatske od IX. do kraja XVIII. stoljeća*, katalog izložbe, Muzeji Hrvatskog zagorja, Muzej seljačkih buna, Gornja Stubica
- Kovács L., 2000, Die heilige Lanze Ungarns, u: *Europas mitte um 1000*, Beiträge zur Geschichte, Kunst und Archäologie, Band 2, 902-903.
- Kouřil P., 2004, Raně středověký bojovníký hrob z Hradce nad Moravicí, SlovArch LII-1, Nitra, 55-76.
- Marković Z., Zvjercac I., 2000, Arheološko-povijesni slijed naseljavanja Torčeca i okolice, u: *Povijest Torčeca*, Bjelovar, 44-59.
- Miletić N., 1963, Nakit i oružje IX-XII veka u nekropolama Bosne i Hercegovine, GZMS XVIII, Sarajevo, 155-178.
- Miletić N., 1979, Ranosrednjovjekovno koplje iz Mogorjela, ZborRadNM IX-X, Beograd, 145-151, T. I-IV.
- Paulsen P., 1967, Einige Flügellanzen aus Schwaben, FundberSchwaben n.f. 18/1, Stuttgart, 255-264.
- Petersen J., 1919, *De Norske Vikingesverd*, En typologisk-kronologisk studie om de vikingetidens vaaben, Kristiania
- Pleterski A., 1987, Sebenjski zaklad, AVes 38, Ljubljana, 237-330.
- Sekelj Ivančan T., 2003, Novi metalni nalaz iz šoderice Jegeniš sjeveroistočno od Koprivnice, ObavijestiHAD, br. 2, god., XXXV, Zagreb, 81-82.
- Sekelj Ivančan T., 2004, Ranokarolinško koplje s krilcima iz šljunčare Jegeniš kod Koprivnice, PrilinsArheolZagreb 21, Zagreb, 109-128.
- Steuer H., 1999, Bewaffnung und Kriegsführung der Sachsen und Franken, u: *799 Kunst und Kultur der Karolingerzeit*, Karl der Grosse und Papst Leo III. In Paderborn, Beiträge zum Katalog der Ausstellung Paderborn 1999, III, Mainz, 310-322.
- Svoljšak A., Bitenc P., Istenič J., Knific T., Nabergoj T., Stare V., Trampuž Orel N., 1997, Novo gradivo v Arheološkem oddelku Narodnega muzeja v Ljubljani (pridobljeno v letih od 1987. do 1993.), Varspomen 36, Ljubljana, 224-297.
- Szameit E., 1987, Karolingerzeitliche Waffenfunde aus Österreich, Teil II: Die Saxe und Lanzenspitzen, AAustr 71, Wien, 155-171.
- Szöke B., M., 2004, Archäologische Angaben zu den Ethnischen Verhältnissen Pannoniens am Anfang der Karolingerzeit, Zborník na počesť Dariny Bialekovej, Nitra, 371-382
- Szöke B., M., 2004a, Borders, Border Defences and Border Guards in the Early Middle Ages, Antaeus 28 (2005), 117-142.
- Tomičić Ž., 1984, Prilog istraživanju karolinškog oružja u Međimurju i varaždinskoj regiji, ShP 14, Split, 209-230.
- Tomičić Ž., 2000, Arheološka slika ranoga srednjeg vijeka na prostoru međurječja Drave, Dunava i Save, u: *Hrvati i Karolinzi*, Rasprave i vrela, Katalog izložbe, Muzej Hrvatskih arheoloških spomenika, prvi dio, Split, 142-161.
- Třeštík D., Merhautová A., 2000, Die böhmischen Insignien und der steinerne Thron, u: *Europas mitte um 1000*, Beiträge zur Geschichte, Kunst und Archäologie, Band 2, 904-906.
- Vinski Z., 1977-1978, Novi karolinški nalazi u Jugoslaviji, VAMZ X-XI, Zagreb, 143-208, T. I-XVII.
- Vinski Z., 1981, O nalazima karolinških mačeva u Jugoslaviji, ShP 11, Split, 9-54.
- Vinski Z., 1985, Marginalija uz izbor karolinškog oružja u jugoistočnoj Europi, ShP 15, Split, 61-117.
- Ypey J., 1982, Flügellanzen in niederländischen Sammlungen, Vor- und Frühgeschichte des unteren Niederrheins, Quellenschriften zur westdeutschen Vor- und Frühgeschichte 10, Bonn, 241-267.



T. 1: Foto-snimak, crtež i rekonstrukcija novopronađenog koplja s krilcima iz šljunčare Jegeniš (Foto i crtež M. Gregl; RTG snimak M. Rastović)

Pl. 1: A photographic image, drawing and reconstruction of the newly-discovered winged spearhead from the Jegeniš gravel extraction plant (Photo and drawing by M. Gregl; X-ray image by M. Rastović)

