

---

## POJASNE KOPČE S LOKALITETA UDBINA – SV. JAKOV

## BELT BUCKLES FROM THE UDBINA – SV. JAKOV SITE

U radu se obrađuju pojasne kopče s lokaliteta Udbina – Sv. Jakov. Ovom prilikom obuhvaćene su sve poznate kopče pronađene u arheološkim kampanjama od 2000. do 2020. godine bilo da se radi o kopčama pronađenim unutar grobnih cjelina bilo izvan njih. Kopče su podijeljene prema već utvrđenim horizontima ukapanja na lokalitetu te se obrađuju i kompariraju s kopčama pronađenim na ostalim istodobnim lokalitetima diljem Hrvatske.

**Ključne riječi:** Udbina, katedrala sv. Jakova, pojasne kopče, jednodijelne kopče, dvodijelne kopče, kopče s pločicom

The paper analyzes the belt buckles from the Udbina–Sv. Jakov site – specifically, all the buckles found either in grave units or outside them during the archaeological campaigns carried out between 2000 and 2020. The buckles are classified by the burial horizons already defined at the site. They are analyzed and compared with the buckles found at other Croatian sites from the same period.

**Key words:** Udbina, St. James' cathedral, belt buckles, one-piece buckles, two-piece buckles, buckles with a plate

## ARHEOLOŠKI LOKALITET UDBINA – SV. JAKOV

Crkva sv. Jakova Starijeg nalazi se u Udbini, na prostoru čiji toponim glasi Kalurija, odnosno Karija, te se sustavno istražuje od 2000. godine u suradnji Muzeja Like iz Gospića i Arheološkog muzeja Zadar.<sup>1</sup> U dosadašnjim istraživanjima utvrđene su vanjske dimenzije stolnice koja je duga trideset i šest, a široka dvanaest metara. Uz katedralu pronađeni su i razni kameni ulomci te zidovi koji su pripisani ostacima biskupskog dvora i samostana.<sup>2</sup> Krbavska biskupija osnovana je 1185. godine u Splitu, međutim najraniji spomen katedrale potječe iz 1389. godine kada se spominje u sporu između Zagrebačkog kaptola i krbavskog biskupa. Boljem poznavanju vremena nastanka katedrale doprinosi i <sup>14</sup>C analiza groba 345 koji sječe zid katedrale. Na temelju dobivene datacije, pisanih izvora i dostupnih numizmatičkih nalaza izgledno je da je katedrala izgrađena u razdoblju između 1340. i 1389. godine.<sup>3</sup> Godine 1460. papa Pio II. bulom premješta središte biskupije iz Krbave u Modruš te navodi da je katedrala već tada u prilično lošem stanju. Stanje se dodatno pogoršalo dolaskom Osmanlija krajem 15. st., koji koriste dio kamenja s katedrale kako bi nadogradili udbinsku utvrdnu.<sup>4</sup> Osim crkve, otkriveno je i groblje koje je u dosadašnjim arheološkim istraživanjima iznjedrilo više od šesto grobova. Pokopi na lokalitetu traju od sredine 13. pa sve do 16. stoljeća.<sup>5</sup> Osteološke analize provedene nad pokojnicima sugeriraju da je upravo ovdje među ostalima pokopan i dio stradalih sudionika Krbavske bitke 1493. godine.<sup>6</sup> Pokojnici su najčešće pokapani u jednostavne zemljane rake bez arhitekture. Kada se javljaju pokopi s arhitekturom, tada uglavnom govorimo o kamenoj poklopnici koja se nalazi iznad pokojnika ili pak o grobnici oko koje je obloženo kamenje. Unutar grobova zabilježeni su i tragovi žbuke, a ponekad se kamenje javlja na glavi ili, nešto rjeđe, na tijelu pokojnika. Izuzetak od takve prakse ukapanja predstavljaju dvadeset i tri zidane grobnice rađene od žbuke i kamena ili cigle. Pokopi u zidanim grobnicama zabilježeni su u sva tri horizonta ukapanja.<sup>7</sup>

## HORIZONTI UKAPANJA

Vremenom pokopa pokojnika bavio se J. Vučić te će se pri obradi arheološke građe koristiti upravo njegova podjela groblja na tri horizonta ukapanja.<sup>8</sup> Spomenuta podjela potkrijepljena je ponajprije arheološkim artefaktima, zatim prostornom disperzijom grobova koja ukazu-

## THE UDBINA–SV. JAKOV ARCHAEOLOGICAL SITE

The Church of St. James the Elder (*Sv. Jakov Stariji*) in Udbina is situated at the site called Kalurija, or Karija. Since 2000, systematic excavations have been carried out there by Museum of Lika in Gospić and Archaeological Museum Zadar.<sup>1</sup> The cathedral's overall dimensions have been established to be 36 meters in length and 12 meters in width. Various stone fragments were found next to it, together with the walls identified as remains of the bishop's palace and the monastery.<sup>2</sup> The Krbava Diocese was established in Split in 1185, but the earliest mention of the cathedral appears in 1389 in the dispute between the Zagreb Chapter and bishop of Krbava. A <sup>14</sup>C analysis of Grave 345 that intersects the cathedral wall has also contributed to a more accurate dating of the cathedral. Based on the dating, written sources and numismatic finds, it is likely that the cathedral was built in the period between 1340 and 1389.<sup>3</sup> In his papal bull of 1460, Pope Pius II moved the seat of the diocese from Krbava to Modruš, specifying that the cathedral had been in a rather poor condition by then. Its condition became further deteriorated when the Ottomans came in the late 15<sup>th</sup> century and used some of its stones to reinforce the fortification in Udbina.<sup>4</sup> Together with the church, the archaeological excavations have yielded a cemetery with more than six hundred graves. Burials had been taking place there between the mid-13<sup>th</sup> and 16<sup>th</sup> centuries.<sup>5</sup> The osteological analyses of the deceased indicate that some of the casualties of the Battle of Krbava in 1493 were buried there.<sup>6</sup> The dead were usually buried in plain earth graves with no architecture. Where architecture does exist, it is merely a stone cover slab or a tomb lined with rocks. Traces of plaster were found in the graves, as well as stones placed on heads of the deceased (and, less frequently, on their bodies). Exceptions to this practice are the 23 tombs made of plastered stones or bricks. Stone-built-tomb burials were recorded at all three burial horizons.<sup>7</sup>

## BURIAL HORIZONS

As it was J. Vučić who dealt with the dating of the burials, this paper will be using his division of the cemetery into three burial horizons when addressing the archaeological finds recorded there.<sup>8</sup> This division is substantiated primarily with archaeological artifacts, with spatial dispersion of

1 Prije arheoloških istraživanja katedralom su se bavili F. J. Fras, V. Heneberg, M. Bogović, M. Kruhek i Z. Horvat, a nakon početka istraživanja referentnu literaturu čine prije svega radovi R. Jurića, T. Kolak i J. Vučića. Više o historijatu istraživanja vidi R. Jurić 2014, 118.

2 R. Jurić 2009, 495–500; 2014, 117.

3 J. Vučić 2021, 214.

4 R. Jurić 2009, 504, 506.

5 R. Jurić 2014, 117–118; J. Vučić 2021, 195.

6 R. Jurić 2009, 501.

7 R. Jurić 2014, 118; J. Vučić 2021, 207–211.

8 J. Vučić 2021, 195–240.

1 Prior to these excavations, the cathedral was researched by F. J. Fras, V. Heneberg, M. Bogović, M. Kruhek and Z. Horvat. The reference literature on the subject published after the beginning of the excavations primarily includes the papers by R. Jurić, T. Kolak and J. Vučić. For more on the history of the excavations, see R. Jurić 2014, 118.

2 R. Jurić 2009, 495–500; 2014, 117.

3 J. Vučić 2021, 214.

4 R. Jurić 2009, 504, 506.

5 R. Jurić 2014, 117–118; J. Vučić 2021, 195.

6 R. Jurić 2009, 501.

7 R. Jurić 2014, 118; J. Vučić 2021, 207–211.

8 J. Vučić 2021, 195–240.

je da u pojedinim slučajevima pokop prati arhitekturu, dok u drugima arhitektura uništava starije grobove, te <sup>14</sup>C analizom.<sup>9</sup>

Dakle, na samom lokalitetu javljaju se tri horizonta pokapanja. Prvi horizont datiran je od druge polovine ili posljednje trećine 13. stoljeća i traje sve do sredine ili kraja 14. stoljeća.<sup>10</sup> Takvu dataciju J. Vučić temelji ponajprije na pronađenoj arheološkoj građi te <sup>14</sup>C analizama.<sup>11</sup> Pokojnici iz tog horizonta najčešće su ukapani uz crkvu koja je prethodila izgradnji katedrale, a često su i presječeni novijim pokopima te zidom novije katedrale. Pokojnici se uglavnom pokapaju u jednostavne zemljane jame koje su tek ponekad poklopljene kamenom pločom iznad groba. Iz najranijeg horizonta potječu i tri zidane grobnice izrađene od kamena sa žbukom. Najznačajniji artefakti koji se javljaju uz pokojnike u prvom horizontu prije svega su trojagodne naušnice, prstenje s umetcima te kružne pojasne kopče.<sup>12</sup> U prvom horizontu zabilježeno je ukupno 129 pokopa, a u njih petnaest pronađena je ukupno dvadeset i jedna kopča.<sup>13</sup>

Drugi horizont pokapanja započinje nakon izgradnje katedrale<sup>14</sup> i traje do početka 15. stoljeća. Glavnu vremensku odrednicu predstavljaju numizmatički nalazi iz nekoliko grobova te činjenica da pokopi te grupe nerijetko presijecaju ranije pokope.<sup>15</sup> Pokojnici su najčešće pokapani s masivnim pečatnim prstenjem, obujmicama od brončanog lima te dvostrukim simetričnim i asimetričnim pojasnim kopčama. Unutar navedenog horizonta zabilježeno je 69 pokopa, a u njih deset pronađeno je deset kopči.

Treći horizont ukapanja javlja se od početka 15. st. kada se na samoj katedrali uočavaju određene arhitektonске preinake,<sup>16</sup> a traje sve do prve polovine 16. st. nakon čega pokapanje na groblju prestaje s obzirom na to da ovaj prostor zaposjedaju Osmanlije.<sup>17</sup> Kada govorimo o arheološkim artefaktima iz trećeg horizonta, svakako su najučestalije brončane vitice, ali javlja se i prstenje s umetcima, aplikе za dijademe od brončanog lima, pseudogranulirana puceta i drugo. U posljednjem horizontu istražena su ukupno 304 groba.<sup>18</sup> Unatoč velikom broju grobova, kopče se u ovoj fazi javljaju tek sporadično te je zabilježeno svega pet kopči iz pet pokopa.

graves (showing that, in some cases, burials adapted to architecture in some cases and architecture destroyed older graves in others) and, finally, with a <sup>14</sup>C analysis.<sup>9</sup>

As has been said above, there are three burial horizons at the site. The first one is dated to the period between the second half or last third of the 13<sup>th</sup> century and the mid- or late 14<sup>th</sup> century.<sup>10</sup> Such dating by J. Vučić is based primarily on the archaeological finds and <sup>14</sup>C analyses.<sup>11</sup> The deceased from this horizon were mostly buried by the church that had stood there before the cathedral was built. Also, their graves were often intersected by later burials and by a wall of the new cathedral. The deceased were mostly buried in plain earth pits that only occasionally had stone cover slabs. The earliest horizon includes three plastered-stone tombs. Three-bead earrings, rings with settings and round belt buckles are the most important artifacts found next to the deceased at the first horizon.<sup>12</sup> A total of 129 burials were recorded on the first horizon. In 15 of these burials, a total of 21 buckles were found.<sup>13</sup>

The second burial horizon began after the construction of the cathedral.<sup>14</sup> It was used until the early 15<sup>th</sup> century. The principal chronological determinants are the numismatic finds from several graves and the fact that the burials from this group often intersect the earlier burials.<sup>15</sup> The deceased were usually buried with massive signet rings, bronze-sheet lace chapes and double symmetrical and asymmetrical belt buckles. There are 69 burials in this horizon and a total of ten buckles were found in ten of them.

The beginning of the third horizon was dated to the early 15<sup>th</sup> century – the same period when certain architectural modifications were made on the cathedral.<sup>16</sup> The horizon was in use until the first half of the 16<sup>th</sup> century, when burials at the cemetery were discontinued due to the Ottoman invasion.<sup>17</sup> As regards the archaeological artifacts at the third horizon, the most common ones are definitely bronze bands, but there are also rings with settings, bronze-sheet appliqués for diadems, pseudo-granulated buttons etc. a total of 304 graves were examined in the last horizon.<sup>18</sup> Despite the large number of graves, buckle finds in this phase are only sporadic: only five buckles from five burials were recorded.

9 Više o samim nalazima na lokalitetu vidi u J. Vučić 2021, 195–240.

10 Do vremena izgradnje katedrale za koju J. Vučić navodi da je vjerojatno izgrađena između 1340. i 1389. godine. J. Vučić 2021, 213–214.

11 Više o datacijama vidi u J. Vučić 2020, 163, 168, 169; 2021, 213.

12 J. Vučić 2021, 213.

13 Podatke o ostalim nalazima unutar svakog horizonta vidi u J. Vučić 2021, 195–240.

14 Katedrala je izgrađena između 1340. godine i 1389. godine. J. Vučić 2021, 213–214.

15 Grob 123 kojem je *terminus antem quem* 1382. godina te još dva groba čiji je stariji novac kovan između 1268. i 1275. godine te mlađi koji je kovan između 1365. i 1381. godine. J. Vučić 2021, 215.

16 Sužen je otvor slavoluka prezbiterija, promijenjena je podnica prezbiterija itd. Vidi u J. Vučić 2021, 215.

17 J. Vučić 2021, 215.

18 J. Vučić 2021, 215.

9 For more on the finds at the site, see J. Vučić 2021, 195–240.

10 Until the construction of the cathedral, believed by J. Vučić to have taken place between 1340 and 1389. J. Vučić 2021, 213–214.

11 More on dating see J. Vučić 2020, 163, 168, 169; 2021, 213.

12 J. Vučić 2021, 213.

13 For information on other finds in each horizon, see J. Vučić 2021, 195–240.

14 The cathedral was built between 1340 and 1389. J. Vučić 2021, 213–214.

15 Grave 123 that has the year of 1382 as a *terminus antem quem* and two other graves with numismatic finds: the earlier coins minted between 1268 and 1275 and the later coins minted between 1365 and 1381. J. Vučić 2021, 215.

16 The passage of the triumphal arch in the presbytery was made narrower, the presbytery floor was replaced etc. For more, see J. Vučić 2021, 215.

17 J. Vučić 2021, 215.

18 J. Vučić 2021, 215.

## POJASNE KOPČE

Predmet rada prvenstveno su pojasne kopče koje se javljaju na lokalitetu Udbina – Sv. Jakov, a ovom prilikom bit će obrađene kopče koje se javljaju kao sastavni dio grobne cjeline te kopče koje su pronađene izvan grobnih cjelina. Osnovni problem prilikom obrade kopči predstavlja dug period tijekom kojeg se upotrebljavaju isti tipovi kopči te njihova široka upotreba, odnosno katkad je teško razaznati jesu li pronađene kopče bile sastavni dio odjeće ili obuće, stoga je iznimno korisno kada su one pronađene *in situ* na tijelu pokojnika.

Pojasne kopče dijelimo na jednodijelne i dvodijelne te kopče s pločicom. Jednodijelne kopče u osnovi se sastoje od pređice i trna koji je ovijen oko okvira kopče. Dvodijelne kopče pak imaju središnji izdatak na koji se pričvršćuje sam trn, a mogu biti simetrične i asimetrične. Kopče s okovom imaju pločicu koja se naslanja na pređicu, a sama pločica može biti fiksirana ili pomična. Tipovi kopči potom se dijele prema obliku pređice, a dodatna podjela može se vršiti na temelju dekoracije, forme ili neke druge posebnosti.<sup>19</sup> Katkad se u literaturi nailazi na termin *pređica* umjesto *kopča*, obično u slučaju kad kopča ima samo pređicu i trn, dok se termin *kopča* upotrebljava kada se javlja i okov ili neki drugi element. Ako okov postoji, tada je najčešće rađen od presavijenog metalnog lima koji bi se zakovicama pričvršćivao za tkaninu, ali mogao je biti načinjen i od drugih materijala. Na kopče se pričvršćivao pojas koji je činio elementarni dio odjeće srednjovjekovnih muškaraca i žena. Osnovni pojasi rađeni su od glatke kože, dok poznajemo i one raskošnije koji su bili ukrašeni s pomoću raznih aplikacija od plemenitih metala. Luksuzniji pojasi rađeni su od svile, baršuna ili kojeg drugog skupocjenog materijala, dok su oni jeftiniji bili izrađeni od kože. Boljem razumijevanju srednjovjekovnih pojasnih kopči, ali i nošnje općenito pridonose i onodobni pisani i slikovni izvori iz kojih ponešto saznajemo o samim kopčama. Jedan od glavnih izvora svakako su oporuke koje su često nositelji vrijednih informacija. Tako primjerice saznajemo da se na zadarskom području tijekom 14. i 15. st. pojasne garniture nazivaju raznim imenima poput *centura*, *çentura*, *zentura*, *centureta*, *cento*, *çuna*, *zona*, *cingulo*, *coregiam*, *passiza*, *fassa* i tako dalje.<sup>20</sup> Tako široka lepeza imena za isti premet ukazuje na različitu upotrebu te različit način ukrašavanja. Muškarci su u pravilu imali nešto uže pojase naspram žena. Tijekom 14. st. i muškarci su nosili široke pojase preko bokova. Također, muški pojasi bili su nešto kraći od ženskih. Posebni pojasi rađeni su i za djecu, a oni su bili nešto kraći i uži. U razdoblju gotike pojasi su češće ukrašeni raznim inicijalima, arhitektonskim i heraldičkim motivima, a od 15. st. sve češći postaju i religijski motivi te figure svetaca. Tijekom 15. i 16. st. u ženskoj nošnji sve su

## BELT BUCKLES

This paper primarily deals with the belt buckles found at the Udbina–Sv. Jakov site, either in grave units or outside them. The basic problem for any analysis of buckles is the fact that the same types were used over a long period of time, that they were in wide use, and that sometimes it is hard to tell if they were used for clothing or footwear. This is why it is very useful when they are found *in situ* on the body of the deceased.

Belt buckles can be classified as one-piece buckles, two-piece buckles and buckles with a plate. Basically, one-piece buckles consist of a buckle ring and a tongue wrapped around the frame. Two-piece buckles, on the other hand, have a central line to which the tongue is fixed and can be symmetrical or asymmetrical. Buckles with fittings have a plate that leans against the buckle ring; the plate can be fixed or hinged. Buckle types are further divided based on the shape of their buckle ring. Even further division is possible, based on decoration, form or some other distinguishing feature.<sup>19</sup> In literature, the term *buckle ring* is used instead of *buckle* when a buckle consists only of a buckle ring and tongue. If it also has fittings or some other elements, then the term *buckle* is used. If there are fittings, they are usually made of a bent metal sheet rivetted to the fabric with studs, but can also be of some other material. The belt – the elementary part of the medieval attire of both men and women – would be attached to the buckles. Regular, cheaper belts were made of smooth leather and the more luxurious ones were made of silk, velvet or some other expensive material and were decorated with precious-metal appliqués. Contemporary textual and pictorial sources can also help us gain a better insight into the medieval buckles and attire in general. Testaments are one of the principal sources of valuable information on the subject. For example, they tell us that, in the Zadar area in the 14<sup>th</sup> and 15<sup>th</sup> centuries, a number of terms were used for belt sets: *centura*, *çentura*, *zentura*, *centureta*, *cento*, *çuna*, *zona*, *cingulo*, *coregiam*, *passiza*, *fassa* etc.<sup>20</sup> Such a wide range of names for the same object indicates multiple use of that object and multiple ways of decorating it. Men's belts were generally narrower than the ones that women wore. In the 14<sup>th</sup> century, men also wore wide belts around their hips. Their belts were somewhat shorter than those for women. Special belts were made for children: they were shorter and narrower. During the Gothic period, belts were often adorned with various initials and architectural and heraldic motifs. The 15<sup>th</sup> century saw a growing use of religious motifs and figures of saints on belts. In the 15<sup>th</sup> and 16<sup>th</sup> centuries, women's belts were frequently adorned with jewels, pearls, gold etc. They were buckled up at the waistline and had a long dangling pendant. Their purpose was not as much utilitarian as it

19 Ž. Tomičić, K. Jelinčić 2011, 138; B. Burazer 2019, 23–26.

20 I. Anzulović 2007, 239.

19 Ž. Tomičić, K. Jelinčić 2011, 138; B. Burazer 2019, 23–26.

20 I. Anzulović 2007, 239.

učestaliji pojasi ukrašeni brojnim draguljima, biserima, zlatom itd., a nose se zakopčani u struku te imaju dug viseći privjesak. Njihova funkcija nije bila toliko utilitarna koliko dekorativna. Od 16. st. nadalje smanjuje se broj aplika na pojasa te oni postaju užji, da bi krajem 16. st. postupno izišli iz mode.<sup>21</sup>

Ponekad se iz izvora može razaznati i uporabna svrha pa je primjerice poznato da termini *zona*, *zuna*, *çona* i *cingulo* tijekom 14. i 15. st. označuju sam pojas, dok *centura* predstavlja naziv za metalni dio (pređicu i okov), ali katkada se tako naziva i čitava pojasna garnitura. Rep, odnosno višak pojasa koji preostane nakon vezivanja, nazivao se *cauda*. Metalne pločice koje su ponekad krasile pojase nazivale su se *passetti*. Ipak, *centura* i *cingulo* najčešći su nazivi za pojase, ali jasna razlika između navedenih pojasa teško se može utvrditi s obzirom na to da su ponekad opisivani identično, a ponekad se u opisima uočavaju razlike.<sup>22</sup> Popis imovine zadarske trgovkinje *Fumiçe Saluagnele* iz 1346. godine sugerira da su *çinguli* laganiji pojasi rađeni od tkanine i ukrašeni svilom ili manjom količinom metala, dok su primjerice *çinture* pojasi s većim brojem metalnih aplika.<sup>23</sup> Nazivi za pojasne garniture tijekom stoljeća ostaju isti ili slični, uz povremenu pojavu pokoje nove riječi.<sup>24</sup> Arheološkim istraživanjima na lokalitetu Udbina – Sv. Jakov do 2020. godine otkriveno je trideset i šest pojasnih kopči u trideset grobova te deset kopči koje su pronađene izvan grobnih cjelina.

### Horizont 1

Pokopi prvog horizonta traju od 13. do sredine ili kraja 14. stoljeća te spadaju u najranije pokope na samom lokalitetu.<sup>25</sup> Prvom horizontu ukapanja pripisano je 129 pokopa, a pojasne kopče zabilježene su u njih petnaest. Kopče počeću iz grobova 119, 133, 156, 161, 169, 182, 189, 195, 211, 295, 305, 309, 362, 392 i 486.

Dominantnu pojavu prvog horizonta ukapanja na lokalitetu predstavljaju kružne kopče koje su najčešće rađene od bronce te u nešto manjem broju od željeza. Kružne brončane kopče zastupljene su s devet primjeraka iz sedam grobova, dok su četiri željezne kopče kružnog oblika pronađene u tri groba. Izuzev navedenih, u prvom horizontu ukapanja javljaju se još i pravokutne kopče izdužena oblika, gljivaste kopče te jedna kopča „D” oblika. Izuzetak predstavljaju i dva izvanredna primjerka koštane i srebrne garniture koji se također pripisuju prvom horizontu ukapanja.

Brončane kružne kopče pronađene su u grobovima 156 (T. 3: 18), 161 (T. 3: 19), 169 (T. 3: 20), 182 s dva primjerka (T. 3: 16, 17), 295 (T. 2: 13), 305 (T. 2: 11), 362 s dva primjerka (T.

was decorative. From the 16<sup>th</sup> century on, less appliqués were used and the belts became narrower. At the end of the 16<sup>th</sup> century, they gradually went out of fashion.<sup>21</sup>

Sources can sometimes help us gain insight into their use. For example, in the 14<sup>th</sup> and 15<sup>th</sup> centuries, the terms *zona*, *zuna*, *çona* and *cingulo* referred to the belt itself, while *centura* referred to its metal parts – buckle ring and fittings (although it was sometimes used for the entire belt set). The belt tail (the surplus that remained after tying the belt) was called *cauda*. The metal plates that sometimes adorned the belts were called *passetti*. Still, the most common terms for the belt were *centura* and *cingulo*. However, a clear distinction between these belts is hard to make because their descriptions are sometimes identical and sometimes they contain differences.<sup>22</sup> The inventory of property of the Zadar merchant *Fumiça Saluagnele* from 1346 suggests that *çinguli* were lighter belts made of fabric and decorated with silk or small metal ornaments, unlike, for example, *çintureo*, which contained more metal appliqués.<sup>23</sup> The names of belt sets had remained the same over centuries, with an occasional new word occurring now and then.<sup>24</sup> The archaeological excavations carried out at the Udbina–Sv. Jakov site until 2020 yielded 36 belt buckles in 30 graves and ten buckles outside grave units.

### Horizon 1

The burials at Horizon 1 are among the earliest burials at the site – they are dated to the period between the 13<sup>th</sup> century and mid- or late 14<sup>th</sup> century.<sup>25</sup> A total of 129 burials have been identified as belonging to Horizon 1 and belt buckles were found in 15 of them (Graves 119, 133, 156, 161, 169, 182, 189, 195, 211, 295, 305, 309, 362, 392 and 486).

Round buckles – most of them made of bronze and some of them made of iron – are the predominant finds recorded in the Horizon 1 burials. Nine specimens of round bronze buckles were found in seven graves and four round iron buckles were found in three graves. In addition to these, elongated rectangular buckles, mushroom-shaped buckles and one D-shaped buckle were also found at this horizon. Two extraordinary specimens of bone and silver belt sets were also found and attributed to Horizon 1.

The round bronze buckles were found in Graves 156 (Pl. 3: 18), 161 (Pl. 3: 19), 169 (Pl. 3: 20), 182 (two specimens, Pl. 3: 16, 17), 295 (Pl. 2: 13), 305 (Pl. 2: 11) and 362 (two specimens, Pl. 1: 6, Pl. 2: 10). The round iron buckles were found in Graves 119 (Pl. 2: 12), 211 (two specimens, Pl. 2: 14, 15) and 392 (Pl. 1: 9). The elongated rectangular buckles were found in Graves 189

21 I. Anzulović 2007, 240, 244, 249, 255.

22 I. Anzulović 2007, 240–241.

23 I. Anzulović 2007, 242.

24 I. Anzulović 2007, 243–245.

25 J. Vučić 2021, 213.

21 I. Anzulović 2007, 240, 244, 249, 255.

22 I. Anzulović 2007, 240–241.

23 I. Anzulović 2007, 242.

24 I. Anzulović 2007, 243–245.

25 J. Vučić 2021, 213.

1: 6, T. 2: 10). Željezne kružne kopče pronađene su u grobovima 119 (T. 2: 12), 211 s dva primjerka (T. 2: 14, 15) te u grobu 392 (T. 1: 9). Pravokutne kopče izdužena oblika pronađene su u grobovima 189 (T. 7: 36) i 392 (T. 5: 33).<sup>26</sup> Glijivaste kopče potječu iz grobova 133 (T. 4: 22) i 195 (T. 5: 27, 28). Kopča „D“ oblika pronađena je u grobu 486 (T. 6: 37). Koštana garnitura potječe iz groba 182 (T. 6: 41), dok je srebrna garnitura otkrivena u grobu 309 (T. 6: 39).

Iz navedenih podataka evidentno je da prvim horizontom ukapanja dominiraju pojasne pređice kružnog oblika koje su rađene od bronce i od željeza. One se mogu javljati kao samostalna pojava ili pak u paru s najčešće dvije alke koje čine dijelove pojasne garniture. Zastupljenost pređica s pratećim alkama i pređica bez alki identična je. Na groblju uz katedralu zabilježeno je i pet pokopa gdje se alke javljaju uz kružne pređice te pet gdje se kopče javljaju kao samostalna pojava. Kružne kopče najjednostavniji su i najraniji oblik kopči koji se uopće javlja na srednjovjekovnim lokalitetima diljem Hrvatske te se općenito datiraju u razdoblje od 12. do 16. stoljeća, iako ponegdje traju i dulje, sve do 18. stoljeća.<sup>27</sup> Specifičnost jednodijelnih kružnih kopči jest u tome da se u pravilu nikad ne javljaju s okovom.<sup>28</sup>

Kružne pojasne kopče s trnom bez pratećih alki javljaju se u grobovima 182 (dvije kopče), 305, 362 (dvije kopče), 119 i 211 (dvije kopče). Sudeći prema položaju na tijelu te prema njihovoj veličini, sve pronađene kopče služile su kao sastavni dio pojasne garniture, odnosno činile su središnju pređicu kojom se vezivao pojas. Osim na Udbini, kružne kopče samostalno se javljaju i drugdje pa ih bilježimo primjerice i u Vrh Rici uz crkvu Sv. Spasa<sup>29</sup> gdje se, kao i u Udbini, javljaju u željeznoj i brončanoj varijanti. Osim navedenog lokaliteta, kopče tog tipa pronađene su i u Zemunik Donjem pri istraživanju utvrde,<sup>30</sup> potom na lokalitetima Pakoštane – Crkvina,<sup>31</sup> Baba lokva,<sup>32</sup> Brnazama kod Sinja,<sup>33</sup> Sv. Juraj od Putalja<sup>34</sup> te na Bribir – Dolu u blizini crkve Sv.

(Pl. 7: 36) and 392 (Pl. 5: 33).<sup>26</sup> The mushroom-shaped buckles come from Graves 133 (Pl. 4: 22) and 195 (Pl. 5: 27, 28). The D-shaped buckle was found in Grave 486 (Pl. 6: 37). The bone belt set comes from Grave 182 (Pl. 6: 41) and the silver set was found in Grave 309 (Pl. 6: 39).

All the above mentioned clearly indicates that the first burial horizon is dominated by the round buckle rings made of bronze and iron. They appear either independently or as part of a couple, usually with two loops belonging to belt sets. The former ones have been found in identical numbers as the latter ones. At the cemetery, right by the cathedral, there are five burials where the loops were found together with round buckle rings and five burials where buckles were found independently. Round buckles are the simplest and earliest type of buckles found at medieval sites throughout Croatia. They are generally dated to the period between 12<sup>th</sup> and 16<sup>th</sup> centuries, although there were cases where they lasted much longer, into the 18<sup>th</sup> century.<sup>27</sup> In general, one-piece round buckles are never found together with fittings.<sup>28</sup>

The round belt buckles with a tongue and unaccompanied by loops were found in Graves 182 (two specimens), 305, 362 (two specimens), 119 and 211 (two specimens). Judging by their position on the bodies and by their sizes, all of these buckles belonged to belt sets – they functioned as central buckle rings used for tying up belts. Round buckles were recorded not just in Udbina, but also, for example, in Vrh Rika by the Church of the Holy Savior (sv. Spas)<sup>29</sup> where, just like in Udbina, both the iron and the bronze types were found. The buckles of this type were also found during the excavation of the fortress in Zemunik Donji,<sup>30</sup> as well as at the following sites: Pakoštane – Crkvina,<sup>31</sup> Baba lokva,<sup>32</sup> Brnaze near Sinj,<sup>33</sup> Sv. Juraj od Putalja<sup>34</sup> and Bribir – Dol near St. Mary's Church.<sup>35</sup> They were also recorded in the continental parts of Croatia, like in Gora near Petrinja.<sup>36</sup>

26 Željezna pređica iz groba 392 prilično je loše sačuvana te se ne može zaključiti mnogo više osim da je bila pravokutna oblika.

27 Ž. Tomičić, K. Jelinčić 2011, 138; K. Gusar, D. Vujević 2016, 34; B. Burazer 2019, 28.

28 R. Whitehead 2003, 16.

29 Grob 123f sadržavao je kružnu brončanu kopču s trnom. Grobovi 605 i 606 sadržavali su po jednu željeznu kružnu kopču s trnom. Grob 677 imao je dvije kružne i jednu glijivastu kopču. Sve tri kopče rađene su od željeza. Grob 693 imao je dvije kružne kopče od kojih je jedna izgubljena. Dostupna kopča izrađena je od željeza. Više o nalazima vidi u M. Petrinc 1996, 20, 50, 51, 59, 60, 63.

30 K. Gusar, D. Vujević 2016, 34.

31 Objavljene su tri kružne kopče i jedna kopča D-oblika. Jedna kružna kopča rađena je od željeza, druga od bronce, dok je treća imala brončanu alku i željezni trn. Vidi u K. Gusar, D. Vujević 2013, 278, 294.

32 Pređica s trnom pronađena je u otkopnom sloju. Vidi u T. Burić *et al.* 2013, 1, 19.

33 Kružna kopča pronađena je u grobu 93, uz desni bok pokojnika. Vidi u S. Gunjača 1955, 129.

34 Kopče su pronađene u grobu 23/2, na prsima i iznad pojasa pokojnika. Vidi u T. Burić 2001, 269, 312.

26 The iron buckle ring from Grave 392 is in a rather poor condition and practically the only thing that can be concluded about it is the fact that it was rectangular.

27 Ž. Tomičić, K. Jelinčić 2011, 138; K. Gusar, D. Vujević 2016, 34; B. Burazer 2019, 28.

28 R. Whitehead 2003, 16.

29 Grave 123f contained a round bronze buckle with a tongue. Graves 605 and 606 contained one round iron buckle with a tongue each. In Grave 677 there were two round buckles and one mushroom-shaped buckle – all three of them made of iron. In Grave 693 there were two round buckles, one of which is now lost. The available one is made of iron. For more on these finds, see M. Petrinc 1996, 20, 50, 51, 59, 60, 63.

30 K. Gusar, D. Vujević 2016, 34.

31 Three round buckles and one D-shaped buckle were published. One round buckle is made of iron and the other one of bronze. The third one had a bronze loop and an iron tongue. For more, see K. Gusar, D. Vujević 2013, 278, 294.

32 A buckle ring with a tongue was found in the excavation layer. For more, see T. Burić *et al.* 2013, 1, 19.

33 The round buckle was found in Grave 93, next to the right hip of the deceased. For more, see S. Gunjača 1955, 129.

34 The buckles were found in Grave 23/2, on the chest and above the waist of the deceased. For more, see T. Burić 2001, 269, 312.

35 A number of round buckles and loops without tongues were found here. For more, see M. Zekan 1996, 49–51.

36 Two round bronze buckles were found in the grave. For more, see J. Belaj 2010, 136.

Marije,<sup>35</sup> a javljaju se i u kontinentalnim predjelima Hrvatske, primjerice u Gori u blizini Petrinje.<sup>36</sup>

Kružna predica katkad se javlja s dvije veće alke koje se obično nalaze na bokovima pokojnika te su u pravilu rađene od bronce. Izuzetak možda predstavlja grob 392 (T. 1: 9) gdje su pronađene dvije željezne alke i ulomak treće koja je mogla, ali ne nužno i morala, imati trn. Kopče s dvije prateće alke javljaju se i drugdje, primjerice na Sv. Spasu u Vrh Rici.<sup>37</sup> Položaj alki i predica pronađenih *in situ* u grobovima 156, 161 i 295 sugerira da se predica, koja je gotovo uvijek manjih dimenzija od bočnih alki, nalazila na sredini karlice i činila je središnji dio pojasne garniture, dok su na bočnim stranama karlice zabilježene alke za koje bi se vezala tkanina koja je činila pojas. Tragovi tkanine zabilježeni su na više kopči i alki<sup>38</sup> te predstavljaju nedvojbeno potvrdu da su ti dijelovi pojasne garniture bili međusobno povezani. S obzirom na činjenicu da se kopče katkad nalaze samostalne, a ponekad s jednom ili dvije alke, može se zaključiti da se i sama pojasna garnitura vezivala na različite načine. Kopče s jednom pratećom alkom javljaju se u grobu 169 (T. 3: 20). Slučaj s kopčom i jednom pratećom alkom zabilježen je i na groblju uz crkvu Sv. Spasa u Vrh Rici.<sup>39</sup>

Kružne kopče s lokaliteta Udbina – Sv. Jakov siromašne su u dekorativnom smislu, odnosno najčešće su neukrašene. Ako ukras i postoji, on se javlja na trnu predice. Takva pojava zabilježena je na nekoliko kopča iz grobova 182, 211, 295, 305, 362. Predica iz groba 182 (T. 3: 16) na samom početku svog trna sadrži jednostavno kvadratno zadebljanje u plitkom reljefu koje može imati dekorativno-funkcionalnu svrhu, odnosno može služiti i kao ojačanje kostura trna. Slično zadebljanje, samo nešto nepravilnija oblika, javlja se i na predici iz groba 295 (T. 2: 13). Osim navedenog, javljaju se i rebrasti ukrasi rađeni graviranjem. Osim na brončanim, rebrasti ukras izrađen graviranjem zabilježen je i na željeznoj predici iz groba 211 (T. 2: 14). To je ujedno i jedina željezna pojasna kopča prvog horizonta ukapanja s dekoracijom. Rebrasti urezi javljaju se na predici iz groba 305 (T. 2: 11) gdje imamo jedan urez koji vodoravno sječe početak trna te na predici iz groba 362 (T. 2: 10) gdje se javljaju dva takva ureza. Trn kopči blago se sužava prema kraju ili je pak jednakog promjera čitavom duljinom. Površina svih brončanih alki ispolirana je, odnosno predica je izravnata s vanjske i unutrašnje strane, dok su rubovi blago zaobljeni.

Round buckle rings are sometimes found together with two larger loops which are usually placed on the hips of the deceased and are generally made of bronze. Grave 392 (Pl. 1: 9) may be an exception here – two iron loops were found in it, together with the fragment of a third one that could have had a tongue. Buckles with two appertaining loops were also found at other sites, such as sv. Spas in Vrh Rika.<sup>37</sup> The positions of the loops and buckle rings found *in situ* in Graves 156, 161 and 295 suggest that the buckle ring, which is almost always smaller than the lateral loops, was placed in the middle of the pelvis, constituting the central part of the belt set, while the loops found at the lateral sides of the pelvis were meant for tying up the fabric the belt was made of. Traces of the fabric were found on a number of buckles and loops.<sup>38</sup> They can be seen as evidence that these parts of the belt set were interconnected. Based on the fact that buckles are sometimes found independently and sometimes with one or two loops, it can be concluded that the belt set itself was tied in various ways. Buckles with one appertaining loop were found in Grave 169 (Pl. 3: 20). A find of a buckle with an appertaining loop was also recorded at the cemetery of the Church of the Holy Savior in Vrh Rika.<sup>39</sup>

The decorations on the round buckles from the Udbina – Sv. Jakov site are unnoticeable, usually even non-existent. If a decoration exists at all, it is found on the tongue of the buckle ring, like in the case of several buckles found in Graves 182, 211, 295, 305 and 362. The buckle ring from Grave 182 (Pl. 3: 16) has a plain square bas-relief thickening at the base of its tongue which can be considered as a decoration, but it could have also served as a reinforcement of the tongue. A similar thickening, although somewhat more asymmetrical, can be seen on the buckle ring from Grave 295 (Pl. 2: 13). Engraved ribbed decorations were also found. Such engraved ribbed decorations can be seen on bronze buckle rings and on an iron one found in Grave 211 (Pl. 2: 14). This is also the single decorated iron belt buckle found at the first burial horizon. Ribbed incisions can be seen on a buckle ring from Grave 305 (Pl. 2: 11), with one incision intersecting horizontally the base of the tongue, and on a buckle ring from Grave 362 (Pl. 2: 10), where two such incisions can be seen. The tongues of these buckles either taper slightly towards the end or have a constant diameter along their length. The surface on every bronze loop is polished; the buckle rings are flattened both on the outside and on the inside and the edges are slightly rounded.

35 Zabilježena pojava više kružnih kopči i alki bez trna. Vidi u M. Zekan 1996, 49–51.

36 Dvije brončane kružne kopče pronađene su unutar groba. Vidi u J. Belaj 2010, 136.

37 U grobu 898 pronađene alke rađene su od bronce, dok je kopča izgubljena. Logična je pretpostavka da je i sama kopča bila brončana, ali da to ne mora nužno biti tako svjedoči grob 521 s istog lokaliteta gdje se brončana alka javlja u kombinaciji sa željeznom kopčom. Više o artefaktima vidi u M. Petrinec 1996, 44, 84, 85.

38 Fragmenti tkanine javljaju se u nekoliko navrata. U grobu 161 tkanina se javlja na alki, grob 169 sadrži tkaninu na alki i predici, a pojava zlatoveza zabilježena je u grobovima 182, 295 i 305.

39 Željezna alka i kopča pronađene u grobu 879.

37 The loops found in Grave 898 are made of bronze. The buckle is lost. It is logical to assume that the buckle, too, was made of bronze. However, Grave 521 at the same site can be seen as evidence that it does not necessarily have to be so: a bronze loop was found in it together with an iron buckle. For more on these artifacts, see M. Petrinec 1996, 44, 84, 85.

38 Fragments of fabric were found on several occasions. The fabric from Grave 161 was found on a loop; the one from Grave 169 on a loop and buckle ring; the fabric with golden threads was found in Graves 182, 295 and 305.

39 This iron loop and buckle were found in Grave 879.

Kružne kopče pronađene unutar grobnih cjelina javljaju se kao samostalan nalaz te u kombinaciji s drugim predmetima. Kao samostalna pojava zabilježene su u šest pokopa,<sup>40</sup> a u dva slučaja javljaju se i s drugim vrstama kopči.<sup>41</sup> Dvije kružne kopče pronađene su u kombinaciji s ostrugama sa zvjezdicama koje se ne javljaju u mlađim razdobljima na udbinskom groblju.<sup>42</sup> Kombinaciju zvjezdolikih ostruga i kružnih pojasnih kopči ne treba dovoditi u međusobnu korelaciju jer njihova zajednička pojava nije uobičajena na Udbini, a ni na drugim istovremenim lokalitetima.<sup>43</sup> S obzirom na učestalost navedenog tipa na Udbini, ali i na ostalim istovremenim lokalitetima, logičnim se čini zaključak da su kružne pojasne kopče široko rasprostranjene tijekom 13. i 14. st. te ne predstavljaju nikakav statusni simbol osobama koje su ih nosile, odnosno nosili su ih pripadnici svih društvenih staleža.<sup>44</sup>

Izuev prethodno spomenutih kružnih pojasnih kopči u prvom horizontu ukapanja zabilježeni su i drugi oblici. Kopča iz groba 486 (T. 6: 37) mogla bi se pripisati kopčama tipa D. Stranica pređice na kojoj se nalazi igla ravna je, dok su ostale tri strane tek blago zaobljene i tvore gotovo kvadratnu formu. Na ravnu stranu pređice nadovezivao se metalni pravokutni okov koji je imao utor za zakovicu kojom se kopča spajala s tkaninom. Najbliže analogije takvoj kopči pronalazimo na lokalitetu Suhopolje – Kliškovac gdje je pronađena kopča čija je pređica gotovo identična ovoj udbinskoj, a autori navode da je uz nju pronađena i pravokutna pločica, ali ne donose njezinu fotografiju.<sup>45</sup> Donekle slični oblici javljaju se i na lokalitetu Zagreb – Opatovina<sup>46</sup> te na groblju crkve Sv. Nikole biskupa u Žumberku<sup>47</sup> i svrstani su u kopče tipa D, stoga smatramo da se i taj udbinski primjerak može pripisati istom tipu. Datacija takvih kopči prilično je široka, odnosno javljaju se u razdoblju od 13. do 18. stoljeća. Uzmemo li u obzir okolnosti pokopa groba 486, možemo pretpostaviti da je ta kopča nešto starijeg postanka, odnosno okvirno se datira u razdoblje 13. i 14. stoljeća.<sup>48</sup>

Pravokutne kopče još su jedan od tipova koji je zabilježen u pokopima prvog horizonta, ali u nešto manjoj

The round buckles from grave units are found both independently and together with other objects. They were found independently in six burials<sup>40</sup> and together with other types of buckles in two cases.<sup>41</sup> Two round buckles were found together with rowel spurs which are not present in later periods of the Udbina cemetery.<sup>42</sup> However, round belt buckles and rowel spurs should not be correlated because such twin finds have not been recorded in Udbina or any other site from the same period.<sup>43</sup> Given the frequency of this type in Udbina and at all other sites from the same period, it seems logical to conclude that round belt buckles were widespread in the 13<sup>th</sup> and 14<sup>th</sup> centuries and that they were not considered a status symbol by those who wore them. In other words, they were worn by members of all social classes.<sup>44</sup>

In addition to the abovementioned round belt buckles, other buckle types have also been recorded in the first burial horizon. The buckle from Grave 486 (Pl. 6: 37) could be identified as a D-type buckle. The side of the tongue with the pin is flat and three remaining sides are only slightly rounded and are almost square. The flat side of the buckle ring used to have an extension in the form of a rectangular metal fitting that had a groove intended to receive the stud used for fastening the buckle to the fabric. The closest analogies for this buckle were found at the Suhopolje–Kliškovac site, where a buckle with a buckle ring almost identical to this one from Udbina was found. The authors note that a rectangular plate was found together with it but they have not provided its photograph.<sup>45</sup> Somewhat similar forms were found at the Zagreb – Opatovina site<sup>46</sup> and at the cemetery of the Church of St. Nicholas the Bishop in Žumberak<sup>47</sup>. As these were classified as belonging to the D-type buckles, we believe that the Udbina specimen could be classified the same. The dating of these buckles is not very accurate because they were used in the period spanning the 13<sup>th</sup> and 18<sup>th</sup> centuries. If we take into account the circumstances of the burial in Grave 486, we can assume that this buckle is somewhat older and that it could roughly be dated to the 13<sup>th</sup> and 14<sup>th</sup> centuries.<sup>48</sup>

40 Grobovi: 156, 161, 169, 211, 295 i 305.

41 U grobu 182 pronađene su s koštanim pojasnom garniturom te u grobu 362 sa željeznom pravokutnom kopčom.

42 Kopče i ostruge pronađene u grobovima 119 i 362. J. Vučić 2021, 220.

43 Npr. Bribir – Dol i Vrh Rika – Sv. Spasa gdje se kružne kopče ne javljaju s ostrugama.

44 Kao primjer pripadnika višeg društvenog staleža koji je nosio kružne pojasne kopče možda bi se mogao izdvojiti pokojnik iz groba 295, budući da je isti otkriven kao samostalan ukop unutar zidane grobnice. Suprotnost njemu predstavljaju grobovi 156, 161 i 169 koji su pronađeni u jednostavnim zemljanim rakama. Kružne kopče jedini su nalaz kod sva četiri navedena pokopa.

45 Ž. Tomičić, K. Jelinčić 2011, 138 Tab. 2, PN 67.

46 Ž. Tomičić, K. Jelinčić 2011, 138.

47 A. Azinović Bebek, A. Janeš 2016, 132; A. Janeš 2017, 58–59.

48 J. Vučić navodi da skupina grobova kojoj pripada i grob 486 „počiva uglavnom na matičnoj stijeni ili su dublje ukopani u nju” te ih pripisuje prvom horizontu ukapanja koji se datira od 13. do kraja 14. st. pa bi sukladno tome i kopču trebalo datirati u isto ili približno razdoblje. J. Vučić 2021, 212.

40 Graves 156, 161, 169, 211, 295 and 305.

41 In Grave 182 they were found together with a bone belt set and in Grave 362 together with a rectangular iron buckle.

42 These buckles and spurs were found in Graves 119 and 362. J. Vučić 2021, 220.

43 E.g. Bribir–Dol and Vrh Rika–sv. Spas, where round buckles and spurs have not been found together.

44 The person with round belt buckles buried in Grave 295 could perhaps be considered as a member of a higher class because he was found as an individual burial in a built grave. Graves 156, 161 and 169 can be seen as the opposite examples as they include plain earth-pit burials. Round buckles were the only finds recorded in all of these four burials.

45 Ž. Tomičić, K. Jelinčić 2011, 138 Tab. 2, PN 67.

46 Ž. Tomičić, K. Jelinčić 2011, 138.

47 A. Azinović Bebek, A. Janeš 2016, 132; A. Janeš 2017, 58–59.

48 J. Vučić notes that the group of graves to which Grave 486 belongs “mostly rest on the bedrock or are dug deep into it”. He attributed them to the first burial horizon dating back to the period from the 13<sup>th</sup> to late 14<sup>th</sup> centuries. Consequently, the buckle should be dated to the same or almost the same period. J. Vučić 2021, 212.

količini. Iz groba 189 (T. 7: 36) potječe željezna kopča oblika izduženog pravokutnika. Pravokutne pojasne kopče javljaju se diljem čitave Hrvatske. Neki od lokaliteta na kojima se te kopče pojavljuju jesu Zagreb – Opatovina<sup>49</sup> i Ružica grad,<sup>50</sup> dok se u Dalmaciji javljaju primjerice na lokalitetu Vrh Rika – crkva Sv. Spasa<sup>51</sup> te Bribir-Dolu uz crkvu Sv. Marije.<sup>52</sup> Pravokutni oblik zadovoljavaju i kopče iz Đakova<sup>53</sup> i Žumberka,<sup>54</sup> iako su one ipak nešto drukčije forme od udbinskog primjerka. Katkad mogu biti i nepravilne forme ili sa zadebljanjem na prednjem dijelu pređice koje se postigne raskucavanjem okvira, ali dosadašnja istraživanja na lokalitetu nisu iznjedrila takve primjerke. Unatoč lošijem stanju, pravokutna forma kopče iz groba 189 jasno je vidljiva. Navedeni primjerak može se okvirno datirati u 13. ili 14. stoljeće.<sup>55</sup>

Kopča pronađena unutar groba 392 (T. 5: 33) mogla bi biti kvadratnog tipa, ali s obzirom na njezinu parcijalnu sačuvanost treba ostaviti mogućnost da se tu možda radi i o pravokutnoj kopči. Kvadratne kopče široko su rasprostranjene te imaju svakojaku uporabnu svrhu. Udbinski primjerak možda pripada tipu kvadratnih kopči s ojačanjem na prednjoj strani pređice, ali s obzirom na veliku korodiranost i parcijalnost nalaza teško je reći nešto više o samom predmetu. Kopče s valjkastim ojačanjem na jednoj od stranica pređice javljaju se i drugdje, primjerice na lokalitetima Torčec – Cirkvišće,<sup>56</sup> Zagreb – Opatovina<sup>57</sup> i Ružica grad.<sup>58</sup>

Iz grobova 133 (T. 4: 22) i 195 (T. 5: 27, 28) potječu tri gljivaste pojasne kopče koje su karakterističnije za drugi horizont ukapanja, ali zbog položaja grobova te ostalih artefakta pronađenih unutar grobnih cjelina te nalaze pripisujemo prvoj skupini pokapanja.<sup>59</sup> Pređica iz groba 133 gljivasta je oblika te sadrži dva trna koji služe za kopčanje. U sklopu grobne cjeline groba 195 otkrivene su dvije gljivaste pređice.<sup>60</sup> Jedna nalik prethodno spomenutoj, dakle gljivasta oblika s dva trna, dok je druga nešto manjih dimenzija i sadrži jedan trn.<sup>61</sup> Više riječi o

Rectangular buckles are just another type of buckles recorded in Horizon 1 burials, but are found there in lesser quantities. An elongated rectangular iron buckle comes from Grave 189 (Pl. 7: 36). Rectangular belt buckles are found throughout Croatia, including the sites such as Zagreb–Opatovina<sup>49</sup> and Ružica grad<sup>50</sup>. As for Dalmatia, they were found at the Vrh Rika – sv. Spas<sup>51</sup> and at Bribir-Dol – sv. Marija by the church.<sup>52</sup> The buckles from Đakovo<sup>53</sup> and Žumberak<sup>54</sup> are also rectangular, although their form is somewhat different than the one of the Udbina specimen. The forms can sometimes be irregular or have a thickening at the front end of the tongue (made by battering of the frame); however, the excavations at the site have not yielded such specimens yet. Despite its poor condition, the rectangular form of the buckle from Grave 189 is clearly visible. This specimen can roughly be dated to the 13<sup>th</sup> or 14<sup>th</sup> centuries.<sup>55</sup>

The buckle found in Grave 392 (Pl. 5: 33) could be of the square type. However, as it is only partially preserved, there is also a possibility that it belongs to the rectangular type. The square buckles were widely distributed and had multiple purposes. The Udbina specimen may belong to the square type reinforced at the front side of the tongue. However, due to its corroded condition and fragmentary state, it is hard to tell something more about it. Buckles with cylindrical reinforcement on one of the sides of the tongue are also found elsewhere, such as at the Torčec – Cirkvišće,<sup>56</sup> Zagreb – Opatovina<sup>57</sup> and Ružica grad sites.<sup>58</sup>

The three mushroom-shaped belt buckles from Graves 133 (Pl. 4: 22) and 195 (Pl. 5: 27, 28) are more typical of the second burial horizon. However, due to the position of the graves and due to the other artifacts found in the grave units, we have classified these finds as belonging to the first burial group.<sup>59</sup> The buckle ring from Grave 133 has a mushroom shape and has two tongues used for buckling up. Two mushroom-shaped buckle rings were discovered inside Grave 195.<sup>60</sup> One is identical as the abovementioned specimen with two tongues and the other one is somewhat

49 Ul. Opatovina u Zagrebu, vidi u Ž. Demo 2007, 74, 75, 77.

50 M. Radić, Z. Bojčić 2004, 89, 90.

51 M. Petrincec 1996, 44, 99.

52 M. Zekan 1996, 51.

53 Lokalitet Franjevac u blizini Đakova. Vidi u A. Dugonjić 2017, 306.

54 Uz groblje crkve sv. Nikole biskupa. Vidi u A. Azinović Bebek, A. Janeš 2016, 132.

55 Na temelju pripadnosti grobu 189 koji J. Vučić ubraja u prvi horizont ukapanja. J. Vučić 2021, 206.

56 T. Sekelj Ivančan, T. Tkalčec 2003, 14.

57 Ž. Demo navodi ih kao pravokutne kopče. Ž. Demo 2007, 75–77. kat. br. 16.9 i 16.11.

58 M. Radić, Z. Bojčić 2004, 90.

59 Oba ukopa javljaju se s trojagodnim naušnicama tipa D koje su karakteristične za prvi horizont ukapanja.

60 Gljivasta pređica s dva trna pronađena je *in situ* kao dio pokopa pokojnice iz groba 195, dok je druga pređica prema dokumentaciji zabilježena u dislociranim kostima iznad lubanje. Ovom prilikom donosi se neobjavljena dislocirana kopča. Druga kopča objavljena je u ranijoj publikaciji (T. 5: 27). Vidi u R. Jurić 2009, 123.

61 Manja pređica iz groba 195 pronađena je u sklopu dislociranih kostiju oko lubanje pokojnika tako da postoji realna mogućnost da sama kopča nije originalno pripadala pokojniku iz groba 195.

49 Opatovina Street in Zagreb. For more, see Ž. Demo 2007, 74, 75, 77.

50 M. Radić, Z. Bojčić 2004, 89, 90.

51 M. Petrincec 1996, 44, 99.

52 M. Zekan 1996, 51.

53 The Franjevac site near Đakovo. For more, see A. Dugonjić 2017, 306.

54 By the cemetery of the Church of St. Nicholas the Bishop. For more, see A. Azinović Bebek, A. Janeš 2016, 132.

55 Based on the fact that it comes from Grave 189 that J. Vučić has included in the first burial horizon. J. Vučić 2021, 206.

56 T. Sekelj Ivančan, T. Tkalčec 2003, 14.

57 Ž. Demo mentions them as rectangular buckles. Ž. Demo 2007, 75–77. cat. nos. 16.9 and 16.11.

58 M. Radić, Z. Bojčić 2004, 90.

59 Both burials contained three-bead earrings of D-type, typical of the first burial horizon.

60 The mushroom-shaped buckle ring with two tongues was found *in situ* as part of the female burial from Grave 195. According to the records, the other buckle ring was found among the dislocated bones above the skull. The dislocated buckle is published in this paper for the first time. The second buckle was published earlier (Pl. 5: 27). For more, see R. Jurić 2009, 123.

tom tipu bit će prilikom obrade kopči drugog horizonta s obzirom na to da su gljivaste kopče dominantna pojava tog perioda.

Izniman nalaz prvog horizonta ukapanja predstavljaju dvije pojasne garniture rađene od kosti odnosno srebra. Grob 182 iznjedrio je dvije kružne kopče s trnom te jednu iznimnu koštanu pojasnu garnituru koja se sastoji od kopče s pločicom i šest aplika (T. 6: 41). Pređica i pločica koštane kopče rađeni su od jednog komada, a između pločice izrađeno je udubljenje kroz koje se uvlačila tkanina. Uz rub pravokutne pločice nalaze se dva utora za zakovice s pomoću kojih bi se pričvršćivala tkanina te jedan veći koji je vjerojatno imao dekorativnu funkciju. Pločica na samom završetku ima i pet manjih kvadratnih udubljenja koja su najvjerojatnije imala dekorativnu ulogu. Tri okomite linije krase pločicu kopče s tim da je jedna okomita linija presječena početkom trna, dok je ostatak pločice neukrašen. Pređica je također jednostavno ukrašena na mjestu utora za trn sa stiliziranim biljnim motivom. Uz pređicu pronađene su i tri aplikе oblika izdužena pravokutnika. Sve tri imaju po dva manja i jedan veći središnji utor. Manji utori zasigurno su služili za zakovice s pomoću kojih bi se aplicirali na tkaninu, dok je središnji utor mogao biti ukrašen ili je pak i on mogao sadržavati zakovicu, ali s obzirom na izostanak oksidacije oko središnjeg utora takva je opcija manje vjerojatna. Ostatci zakovica pronađeni su u manjim utovima, a ponegdje su vidljivi i zelenkasti tragovi oksidacije. Unutar pravokutnih aplika plitkim reljefom rađeni su manji pravokutnici koji doprinose dekoru garniture. Osim navedenih, pronađene su i dvije aplikе cvjetna oblika koje također imaju dva manja i jedan veći utor te jedna listolika aplika s jednakim brojem utora. Cvjetolike aplikе imaju po šest latica odijeljenih plitkim reljefom, dok je tučak cvijeta možda ispunjavala ukrasna aplika ili zakovica koja nedostaje. Listolika aplika također je odijeljena plitkim reljefom na četiri lista koji su jednostavno ukrašeni na rubovima. Isti takav ukras javlja se i na koštanoj garnituri iz Galovca.<sup>62</sup> Tamošnji primjerak sastoji se od više listolikih aplika te kružne pojasne kopče s pločicom. Aplikе su identične listolikoj udbinskoj aplici, a određene sličnosti javljaju se i kod same kopče. Osim Galovca, koštane kopče bilježimo još i u Gori u blizini Petrinje, ali tamošnja kopča dvodijelna je oblika te s udbinskom dijeli isključivo materijal od kojeg je rađena te možda i vrijeme nastanka s obzirom na to da je datirana u romanički period.<sup>63</sup> U prilog takvim datacijama idu i povijesni spisi, primjerice popis robe zadarske trgovkinje *Fumiçe Saluanele* datiran u 1346. godinu, a u kojem se jasno svjedoči korištenje koštanih pojasnih kopči za koje se pak ne

smaller and has only one tongue.<sup>61</sup> More on this type will be said when the Horizon 2 buckles will be addressed, because mushroom-shaped buckles are the dominant form of that period.

Two exceptional bone and silver belt sets were found at the first burial horizon. Grave 182 yielded two round buckles with a tongue and one exceptional bone belt set consisting of a buckle with a plate and six appliqués (Pl. 6: 41). Both the buckle ring and the plate of the bone buckle are made of a single piece and the plate has a recess through which the fabric was passed. Along the edge of the rectangular plate, two grooves for studs for fastening the fabric can be seen, as well as a larger groove that probably served as a decoration. The plate at the very end also has five small square recesses that were probably of decorative nature. The buckle plate is decorated with three vertical lines; one line is intersected by the tongue base. The remaining part of the plate is not decorated. The buckle ring also has a plain decoration (a stylized plant motif) where the groove intended for the tongue is. Three elongated rectangular appliqués were also found next to the buckle ring. All three of them have two smaller grooves and a larger central groove. Smaller ones must have been intended for the studs used for fastening to the fabric. The central groove was probably decorated or it also contained a stud (however, as the area around it is not oxidized, this is not very likely). Remains of the studs were found in the smaller grooves; in places, greenish oxidation traces can also be seen. The small bas-relief rectangles inside the rectangular appliqués contribute to the decoration of the belt set. Two flower-shaped appliqués were also found. They, too, have two smaller grooves and a larger one. One leaf-shaped appliqué with the same number of grooves was also found. Each flower-shaped appliqué has six petals separated by a bas-relief. The pestle was probably filled with a decorative appliqué or a missing stud. The leaf-shaped appliqué has four leaves separated with a bas-relief. The leaves have plain decorations on their edges. An identical decoration can be seen on a bone belt set from Galovac.<sup>62</sup> This specimen has several leaf-shaped appliqués and round belt buckles with a plate. The appliqués are identical to the leaf-shaped Udbina appliqué. The buckle is also similar to an extent. In addition to Galovac, bone buckles were also found in Gora near Petrinja. However, that buckle is of the two-piece type. The only thing it has in common with the Udbina buckle is the material it is made of – and, perhaps, the period in which it was made (as it was dated to the Romanesque period).<sup>63</sup>

62 J. Belošević za isti ukras navodi da se radi o „aplikama oblika stiliziranog križa jednakih krakova“. Budući da je listoliki obris jasno vidljiv te je aplika pronađena zajedno s dvije cvjetne aplikе, ovom prilikom koristit će se termin *listolike*. J. Belošević 1997, 301, 329.

63 J. Belaj 2010, 137–138.

61 As the smaller buckle ring from Grave 195 was found among the dislocated bones around the skull, it is quite possible that the buckle itself did not belong to the person buried in Grave 195.

62 For this decoration, J. Belošević notes that these are “appliqués shaped as stylized cross with arms of the same length”. Since the leaf outlines are clearly visible and since the appliqué was found together with two flower-shaped appliqués, we will use the term “leaf-shaped” here. J. Belošević 1997, 301, 329.

63 J. Belaj 2010, 137–138.

donosi detaljan opis. I. Anzulović upozorava da kopče takvog tipa vjerojatno nisu postizale visoku cijenu s obzirom na to da su se prodavale u lokalnim trgovinama, a ne u specijaliziranim radionicama.<sup>64</sup> Ipak, bez obzira na možebitnu nižu cijenu, kopče takvog tipa predstavljaju vrlo rijedak nalaz na području čitave Hrvatske. Sličnost između galovačkog i udbinskog primjera te spisi trgovkinje Fumice u kojima se navode koštane kopče ukazuju na potencijalno lokalno proizvodno središte koje je možda moglo djelovati negdje na zadarskom području.

Drugi značajan nalaz predstavlja srebrna pojasna garnitura pronađena u grobu 309 (T. 6: 39) koji se nalazio u brodu katedrale. Garnitura se sastoji od pređice na koju se nadovezuje pomični okov, dio pravokutne pločice te zlatne niti. Uz kopču pronađene su i aplikacije te jedan privjesak na koji se nadovezuje aplikacija. Pločice su ukrašene graviranjem s trapezoidnim motivima. Unutar trapeza nalazi se stilizirani prikaz križa. Trn kopče na samom početku igle sadrži dva okomita rebra. Pređica je također ukrašena, a krasi je dva stilizirana prikaza anđela. Osim dijelova aplikacije koji mahom imaju stilizirane listolike motive, pronađen je i jedan privjesak cvjetnog motiva s tri latice. Privjesak se gotovo sigurno vezivao na aplikaciju od koje je sačuvana samo spojnica. Pojas garniture bio je istkan od zlatnih niti koje su također pronađene u grobu pokojnika. Uz luksuznu pojasnu kopču pronađeni su i drugi artefakti koji sugeriraju da se tu radi o pokopu osobe višeg društvenog staleža.<sup>65</sup>

Najsličniji primjerak udbinskoj srebrnoj garnituri u Hrvatskoj predstavlja nalaz izvanrednog gotičkog pojasa ukrašenog heraldičkim i religioznim motivima i pronađenog na groblju kraj crkve Sv. Spasa u Vrh Rici. Tamošnji primjerak sastoji se od srebrnog gotičkog pojasa sa sačuvanom 71 aplikacijom ukrašenom prikazima ljudi, fantastičnih životinja te vegetabilnih motiva. Pojedine aplikacije imaju i manje utore koji su vrlo vjerojatno služili za spajanje aplikacija s tkaninom.<sup>66</sup> Srebrna garnitura slična onoj iz Udbine i Sv. Spasa zabilježena je u Veneciji te se datira u sredinu 14. stoljeća.<sup>67</sup> Četvrtaste pločice venecijanskog primjerka ukrašene su rozetama i nasuprotnim dvostrukim ljljanim prikazima likova. Tri ljudske figure krasi kopču, a uokolo njih javlja se motiv lišća. Dodajmo tome da je još jedna analogija zabilježena na Eubeji<sup>68</sup> koja je svojevremeno bila pod mletačkom vlašću, stoga i ne čude nalazi venecijanske provenijencije.

There are historical documents that support this dating, such as the inventory of the property of the Zadar merchant *Fumića Saluagnela* from 1346, which clearly mentions the use of bone belt buckles (although no detailed description is provided). I. Anzulović has warned that the buckles of this type were probably not particularly expensive as they were sold in local stores and not in specialized workshops.<sup>64</sup> Still, regardless of a possible low price, the buckles of this type are very rare in the whole of Croatia. The similarities between the Galovac and Udbina specimens and the documents of Fumica the merchant mentioning bone buckles suggest that there could have been some local production center somewhere in the Zadar area.

Another important find is the silver belt set discovered in Grave 309 (Pl. 6: 39) in the cathedral's nave. The set consists of a buckle ring with a hinged fitting, a fragment of a rectangular plate and golden threads. The buckle was found together with appliqués and a pendant to which an appliqué was attached. The plates are decorated with engraved trapezoid motifs. A stylized cross can be seen inside the trapeze. The buckle's tongue at the beginning of the pin has two vertical ribs. The buckle ring is also decorated – it has two stylized angels. Together with appliqué fragments (most of which have stylized leaf motifs), a pendant with a flower motif (with three petals) was also found. The pendant was almost certainly connected with the appliqué, of which only the clamp was found. The belt of the belt set was woven of golden threads that were also found in the grave. The luxury belt buckle and some other artifacts suggest that a person of a higher social standing was buried here.<sup>65</sup>

In Croatia, the most similar to the Udbina silver belt set is the exceptional Gothic belt decorated with heraldic and religious motifs found at the cemetery of the Church of the Holy Savior in Vrh Rika. This specimen consists of a silver Gothic belt with 71 preserved appliqués decorated with human figures, fantastic animals and plant motifs. Some appliqués have small grooves that were probably used for attaching them to the fabric.<sup>66</sup> A silver belt set similar to the ones from Udbina and sv. Spas was found in Venice and is dated to the mid-14<sup>th</sup> century.<sup>67</sup> The square plates of the Venice specimen are decorated with rosettes, opposing double *fleurs de lis* and human figures. Three human figures surrounded by leaf motifs can be seen on the buckle. We should also mention another analogy – the one from Euboea.<sup>68</sup> As this island was once under the Venetian rule, it is no surprise that the finds of Venetian origin were discovered there.

64 I. Anzulović 2007, 242–243.

65 U grobu 309 pronađen je i jedan zlatni prsten, ostatci tkanine, spiralnih traka i bronce.

66 M. Petrincec 1996, 104–105.

67 I. Anzulović 2007, 254, 282.

68 H. Tait 2006, 142, sl. 326.

64 I. Anzulović 2007, 242–243.

65 Other finds from Grave 309 include a golden ring and the remains of fabric, spiral bands and bronze.

66 M. Petrincec 1996, 104–105.

67 I. Anzulović 2007, 254, 282.

68 H. Tait 2006, 142, fig. 326.

## Horizont 2

Drugi horizont ukapanja na groblju uz udbinsku katedralu počinje nakon njezine izgradnje i traje tijekom prvih desetljeća 15. st., a dominantnu pojavu kada su kopče u pitanju predstavljaju one gljivasta oblika. Osim spomenutih, zabilježena je i pojava simetričnih te asimetričnih dvodijelnih pojasnih kopči. Arheološkim istraživanjima utvrđeno je da se pojase kopče javljaju u deset pokopa drugog horizonta.<sup>69</sup> Prvi horizont ukapanja obilježila je dominantna pojava brončanih kopči, dok se u sljedećem stupnju situacija znatno mijenja, odnosno gotovo sve pronađene kopče rađene su od željeza.

Gljivaste kopče općenito se javljaju od 14. do 16. st., ali najpopularnije su tijekom 15. stoljeća.<sup>70</sup> Katkad im je naglašena širina, a katkad visina. Gljivaste kopče s lokaliteta Udbina – Sv. Jakov redom su izdužene po visini. To je tip koji je široko zastupljen diljem Hrvatske. U primorju su zabilježene na lokalitetima Vrh Rika – crkva Sv. Spasa,<sup>71</sup> Benkovac – Kličevica,<sup>72</sup> Benkovac – Kula Atlagića,<sup>73</sup> Dugopolje – Vučipolje – Crkvine,<sup>74</sup> Sv. Juraj od Putalja,<sup>75</sup> Biljane Donje – Begovača,<sup>76</sup> Bribir – Tjeme,<sup>77</sup> dok ih u unutrašnjosti nalazimo primjerice na lokalitetima Zagreb – Opatovina<sup>78</sup> i Torčec – Cirkvišće.<sup>79</sup> Na prostoru primorske Hrvatske javljaju se s jednim, dva ili tri trna. Svi navedeni lokaliteti ulaze u ranije navedene vremenske okvire u kojima se te kopče javljaju. Gljivaste kopče koje imaju pravokutni i polukružni dio, odnosno naglašena im je širina, također se javljaju u priobalju i na kontinentu, ali ne i u Udbini.<sup>80</sup> Iz drugog horizonta poznato je ukupno pet pokopa koji su sadržavali gljivaste kopče. Pronađene su u grobovima 108 (T. 4: 26), 109 (T. 5: 29), 112 (T. 4: 24), 174 (T. 4: 23) i 203 (T. 5: 32). Svih pet rađeno je od željeza te imaju jedan ili dva trna. Gljivasta forma katkad je jasno izražena, dok ponekad imamo samo blagu zakošenost. Kopče s dva trna javljaju se u grobovima 174 (T. 4: 23) i 203 (T. 5: 32). Gljivaste kopče s dva trna javljaju se i u prvom horizontu ukapanja i u grobovima 133 (T. 4: 22) i 195 (T. 5: 27). Gljivasta kopča s jednim trnom javlja se u

69 Grobovi 107, 108, 109, 112, 113, 154, 174, 183, 203 i 444.

70 Ž. Demo 2007, 84.

71 Grob 384a gdje je zabilježena gljivasta predica s jednim trnom, grob 669 s gljivastom predicom s dva trna, grob 677 gdje je uz dvije kružne kopče parcijalno sačuvana i kopča gljivasta oblika, grob 688 s gljivastom kopčom s tri trna, grob 860 s gljivastom kopčom s jednim trnom, grob 901 koji je uz kopču D-oblika sadržavao i jednu gljivasta oblika s jednim trnom te slučajni nalazi gljivastih kopča s jednim i tri trna. Vidi u M. Petrinec 1996, 33, 58, 60, 77, 85, 86, 123.

72 K. Gusar, M. Čurković 2011, 11, 26.

73 M. Petrinec 2000, 219.

74 H. Gjurašin 2010, 118.

75 T. Burić 2001, 224. T. VII: 2, T. XI: 11 i T. XII: 15.

76 Kopče su pronađene u grobovima 352 i 514. Vidi u D. Jelovina, D. Vrsalović 1981, 132, Tab. VII, VIII.

77 M. Zekan 1996, 53.

78 Ž. Demo 2007, 79, kat. br. 16.25.

79 T. Sekelj Ivančan, T. Tkalčec 2003, 20, 34.

80 Javljaju se primjerice u Opatovini; Ž. Demo 2007, 84, kat. br. 16.22, 16.23, 16.24, 16.26, 16.27, 16.28, 16.29, 16.30, Zemunik Donjem; K. Gusar, D. Vujević 2016, 34 itd. Ovom prilikom nisu detaljnije opisane s obzirom na to da ih nema na Udbini.

## Horizont 2

The burials of the second horizon at the Udbina cathedral began soon after the cathedral's construction and lasted into the first decades of the 15<sup>th</sup> century. Among the buckle finds there, predominant are the ones of the mushroom-type. There are also symmetrical and asymmetrical two-piece belt buckles. Archaeologists have established the presence of belt buckles in ten burials of the second horizon.<sup>69</sup> While the first burial horizon is characterized by the dominance of bronze buckles, the situation on the next level is very different: almost all the buckles found there are made of iron.

The mushroom-shaped buckles appeared throughout the period spanning the 14<sup>th</sup> and 16<sup>th</sup> centuries but had their peak in the 15<sup>th</sup> century.<sup>70</sup> Sometimes they are of a prominent width and sometimes of a prominent length. The mushroom-shaped buckles from the Udbina–Sv. Jakov site are all elongated along their height. This type is widely distributed throughout Croatia. In the coastal region, they are found at the following sites: Vrh Rika – sv. Spas,<sup>71</sup> Benkovac – Kličevica,<sup>72</sup> Benkovac – Kula Atlagića,<sup>73</sup> Dugopolje – Vučipolje – Crkvine,<sup>74</sup> Sv. Juraj od Putalja,<sup>75</sup> Biljane Donje – Begovača<sup>76</sup> and Bribir – Tjeme<sup>77</sup>. In the continental parts, they are found at the sites like Zagreb – Opatovina<sup>78</sup> and Torčec – Cirkvišće.<sup>79</sup> Those in the coastal region have one, two or three tongues. All these sites were dated to the earlier mentioned periods in which these buckles were used. The mushroom-shaped buckles with rectangular and semicircular parts – in other words, the ones with a prominent width – are also found on the coast and in the hinterland, but not in Udbina.<sup>80</sup> There are five burials at the second horizon known to have contained mushroom-shaped buckles. They were found in Graves 108 (Pl. 4: 26), 109 (Pl. 5: 29), 112 (Pl. 4: 24), 174 (Pl. 4: 23) and 203 (Pl. 5: 32). All five of them are made of iron and have one or two tongues. The mushroom shape is sometimes prominent and sometimes it is just slightly slanted. Buckles with two tongues were found in Graves 174 (Pl. 4: 23) and 203 (Pl. 5: 32). Mushroom-shaped buckles with two tongues were found both in the first burial horizon and in

69 Graves 107, 108, 109, 112, 113, 154, 174, 183, 203 and 444.

70 Ž. Demo 2007, 84.

71 Grave 384a with a mushroom-shaped buckle ring with a single tongue; Grave 669 with a mushroom-shaped buckle ring with two tongues; Grave 677 with two round buckles and a partially preserved mushroom-shaped buckle; Grave 688 with a mushroom-shaped buckle with three tongues; Grave 860 with a mushroom-shaped buckle with a single tongue; Grave 901 with one D-shaped buckle and one mushroom-shaped buckle with a single tongue; and accidental finds of mushroom-shaped buckles with one or three tongues. For more, see M. Petrinec 1996, 33, 58, 60, 77, 85, 86, 123.

72 K. Gusar, M. Čurković 2011, 11, 26.

73 M. Petrinec 2000, 219.

74 H. Gjurašin 2010, 118.

75 T. Burić 2001, 224. pl. VII: 2, pl. XI: 11 and pl. XII: 15.

76 The buckles were found in Graves 352 and 514. For more, see D. Jelovina, D. Vrsalović 1981, 132, Tab. VII, VIII.

77 M. Zekan 1996, 53.

78 Ž. Demo 2007, 79, cat. no. 16.25.

79 T. Sekelj Ivančan, T. Tkalčec 2003, 20, 34.

80 For example, at Opatovina; Ž. Demo 2007, 84, cat. nos. 16.22, 16.23, 16.24, 16.26, 16.27, 16.28, 16.29, 16.30, Zemunik Donji; K. Gusar, D. Vujević 2016, 34 etc. They are not described in detail here because they are not present in Udbina.

grobovima 108 (T. 4: 26), 109 (T. 5: 29) i 112 (T. 4: 24). Gljivasta kopča s jednim trnom zabilježena je u prvom horizontu unutar groba 195, ali ne *in situ* uz pokojnika, već zajedno s dislociranim kostima. Gljivaste kopče drugog horizonta nisu ukrašene te se ne javljaju s drugim nalazima.<sup>81</sup>

Sljedeće najučestalije kopče drugog horizonta ukapanja jesu dvodijelne koje mogu biti simetrične i asimetrične, a javljaju se u četiri pokopa. Asimetrične u grobu 107 (T. 7: 44), a simetrične u grobu 113 (T. 7: 46), 154 (T. 7: 45) i 183 (T. 7: 43). Kopče ovakvog tipa javljaju se u 13. stoljeću, ali postaju izrazito popularne kroz 14. stoljeće.<sup>82</sup> Glavna prednost takvih kopči jest u drugom dijelu pređice koji je usmjeravao remen bliže struku pa je i samim time remen bolje prijanjao uz tijelo.<sup>83</sup> Glavna je odlika asimetričnih kopči različitost oblika koji su odijeljeni središnjom metalnom prečkom. Dvodijelna asimetrična kopča iz groba 107 (T. 7: 44) ima polukružni dio okvira koji je nešto viši naspram pravokutnog dijela, a oni su međusobno odijeljeni središnjom prečkom na kojoj se nalazila igla. Centralna prečka kopče sužena je na središnjem dijelu kako bi se trn fiksirao, a na kraju pređice postoji i utor u koju liježe trn. Analogije tim kopčama pronalazimo na lokalitetu Ivanec gdje ih je zabilježeno nekoliko.<sup>84</sup> Asimetrične kopče s višim polukružnim i manjim pravokutnim dijelom osobito su popularne od 1350. do 1450., što je u potpunosti u skladu s datacijom pokopa groba 107.<sup>85</sup>

Simetrične kopče javljaju se u literaturi i pod nazivom *naočalaste* te se dijele na kopče ovalna i uglata okvira.<sup>86</sup> Kopče takve forme javljaju se od 14. st., a postaju učestalije tijekom 15. i 16. stoljeća.<sup>87</sup> Simetrične kopče iz grobova 113 (T. 7: 46) i 154 (T. 7: 45) ovalnog su oblika. Kopča iz groba 113 sadrži i tragove tkanine na središnjoj osovini oko koje se vezao pojas. Iako je sačuvana samo djelomično, uočljiva je njezina simetrična forma iz koje se može zaključiti da je bila ovalna oblika. Sačuvana stranica pređice izrađena je tako da se sužava prema kraju. Sačuvan je i početak igle na središnjoj osovini. Simetrična kopča iz groba 154 ovalnog je oblika, ali, za razliku od prethodne, stranice njezine pređice nisu bile ukrašene i nema sačuvanu iglu. Takve kopče zabilježene su i drugdje; primjerice javljaju se na lokalitetima Zagreb – Opatovina,<sup>88</sup> Torčec – Cirkvišće,<sup>89</sup> Sv. Juraj od Putalja,<sup>90</sup> Zemunik Donji

Graves 133 (Pl. 4: 22) and 195 (Pl. 5: 27). The mushroom-shaped buckle with a single tongue was found in Graves 108 (Pl. 4: 26), 109 (Pl. 5: 29) and 112 (Pl. 4: 24). This buckle was also recorded in Grave 195 at the first horizon, but not *in situ*, next to the body of the deceased; instead, it was found among the dislocated bones. The mushroom-shaped buckles of the second horizon are not decorated and have not been found together with other artifacts.<sup>81</sup>

The second most common buckles of the second burial horizon are the symmetrical and asymmetrical two-piece buckles. They were found in four burials: the asymmetrical ones in Grave 107 (Pl. 7: 44) and the symmetrical ones in Graves 113 (Pl. 7: 46), 154 (Pl. 7: 45) and 183 (Pl. 7: 43). The buckles of this type first appeared in the 13<sup>th</sup> century and had their peak in the 14<sup>th</sup> century.<sup>82</sup> The main advantage of these buckles was the second part of their buckle ring, which directed the belt closer to the waist, thus making it fit better on the waistline.<sup>83</sup> The main feature of the asymmetrical buckles was the variety of their forms, which were separated by the central metal bar. The two-piece asymmetrical buckle from Grave 107 (Pl. 7: 44) has a semicircular part of the frame which is a bit higher than the rectangular part. These parts are separated by the central bar that contains the pin. The central bar is narrower at its middle section in order to fix the tongue. At the end of the buckle ring there is a groove intended to receive the tongue. Analogies of these buckles were found at the Ivanec, where a few of them were recorded.<sup>84</sup> The asymmetrical buckles with a higher semicircular and a lower rectangular part were particularly popular between 1350 and 1450, which is fully in line with the dating of the burial in Grave 107.<sup>85</sup>

In literature, symmetrical buckles are also called *spectacle-shaped* buckles and are divided into buckles with oval frames and buckles with angular frames.<sup>86</sup> Such buckles first appeared in the 14<sup>th</sup> century and became more widespread in the 15<sup>th</sup> and 16<sup>th</sup> centuries.<sup>87</sup> The symmetrical buckles from Graves 113 (Pl. 7: 46) and 154 (Pl. 7: 45) are oval. The buckle from Grave 113 has traces of fabric on the central axis around which the belt was tied. Although only partially preserved, its symmetrical form is still visible and helps us conclude that the buckle originally had an oval form. The preserved side of the buckle ring was made in such way that it tapers towards the end. The base of the pin on the central axis has also been preserved. The symmetrical buckle from Grave 154 also has an oval form but, unlike the abovementioned one, the sides of

81 Izuzetak predstavlja tek grob 112 gdje je uz kopču pronađen i manji kružoliki ulomak koji bi mogao biti dio zakovice.

82 B. Burazer 2019, 62.

83 G. Egan, F. Pritchard 1991, 53.

84 J. Belaj 2008, 25.

85 J. Vučić navodi da ukop 107 pripada drugom horizontu ukapanja, dakle razdoblju od kraja 14. st. do samog početka 15. stoljeća. J. Vučić 2021, 210, 221. Kopče datirane prema R. Whitehead 2003, 87, kat. br. 539, 541.

86 Ž. Demo 2007, 81–85; Ž. Tomičić, K. Jelinčić 2011, 138.

87 K. Gusar, D. Vujević 2016, 34.

88 Ž. Demo 2007, 81–82, kat. br. 16.32, 16.33.

89 S. Krznar 2016, 92, kat. br. 166.

90 Dislocirana u grobu 270. Vidi u T. Burić 2001, 224, 283, 318.

81 The exception here is Grave 112, where a buckle was found together with a small circular fragment that could have belonged to a stud.

82 B. Burazer 2019, 62.

83 G. Egan, F. Pritchard 1991, 53.

84 J. Belaj 2008, 25.

85 J. Vučić notes that Grave 107 belongs to the second burial horizon – in other words, to the period spanning the late 14<sup>th</sup> century and the very early 15<sup>th</sup> century. J. Vučić 2021, 210, 221. These buckles were dated by R. Whitehead 2003, 87, cat. nos. 539, 541.

86 Ž. Demo 2007, 81–85; Ž. Tomičić, K. Jelinčić 2011, 138.

87 K. Gusar, D. Vujević 2016, 34.

– Gradina<sup>91</sup> i drugdje. Spomenutim udbinskim primjercima može se pridodati i kopča iz groba 183 (T. 7: 43). Iako samo parcijalno sačuvana, na rubovima iznad središnje prečke vidljivi su početci obaju strana prečice koji se prostiru ravnomjerno, stoga je moguće pretpostaviti da je i sama prečica bila simetrične forme. Uz središnju prečku i početak prečice sačuvana je i okovna pločica između koje se umetala tkanina te početak trna. Dvodijelne kopče drugog horizonta ukapanja pronađene su kao samostalni artefakti unutar grobnih cjelina, izuzev groba 183 unutar kojeg su pronađene tri metalne aplikice koje su mogle biti sastavni dio odjeće ili obuće pokojnika.

Navedenim kopčama drugog horizonta možda bi se mogla pridodati i ona iz groba 444 (T. 6: 40). Kopča je D-oblika, odnosno kružolika je, izuzev jedne ravne stranice na kojoj se nalazi igla. Ipak, s obzirom na dimenzije kopče od svega 20 mm, vjerojatnije je da je bila sastavni dio nekog odjevnog predmeta. Oblikom srodna kopča pronađena je na lokalitetu Pakoštane – Crkvina,<sup>92</sup> ali tamošnja je duplo veća od udbinskog primjerka.

### Horizont 3

Posljednji horizont ukapanja na groblju javlja se od 20-ih godina 15. st. i traje sve do prve polovine 16. stoljeća. Iz posljednjeg horizonta potječu ukupno 304 groba. Kopče trećeg horizonta pronađene su u pet grobova, ali se samo u dva mogu vezati za pokojnike.<sup>93</sup> Jedine dvije kopče koje možemo direktno vezati za same pokojnike u trećem horizontu ukapanja jesu one iz grobova 34 i 187. Unutar groba 34 (T. 5: 34) otkrivena je jednostavna željezna pravokutna kopča s trnom. Kopča je neukrašena, pravokutnog oblika s horizontalnim stranicama nešto kraćima naspram vertikalnih. Kopče nalik toj pronađene su na lokalitetima Zagreb – Opatovina,<sup>94</sup> Ružica grad,<sup>95</sup> Vrh Rika – crkva Sv. Spasa,<sup>96</sup> Bribir – Dol<sup>97</sup> i drugdje. Okvirno se datiraju u razdoblje od 14. do 17. stoljeća.<sup>98</sup> Gljivasta kopča iz groba 187 (T. 5: 30) izdužena je po visini kao i svi prethodno spomenuti primjerci tog tipa. Djelomično joj je sačuvan jedan trn, ali zbog svoje visine vrlo je vjerojatno da je imala najmanje dva trna. Istog je oblika i gljivasta kopča iz groba 360 (T. 5: 31), samo nešto većih dimenzija. Kod navedene kopče sačuvana su oba trna. U oba groba kopče su bile jedini nalaz pronađen uz pokojnika.

its buckle ring were not decorated and the pin has not been preserved. Such buckles were also recorded at other sites, such as Zagreb – Opatovina,<sup>88</sup> Torčec – Cirkvišće,<sup>89</sup> Sv. Juraj od Putalja,<sup>90</sup> Zemunik Donji–Gradina<sup>91</sup> and elsewhere. The buckle from Grave 183 (Pl. 7: 43) can also be added to the earlier mentioned Udbina specimens. It is only partially preserved, but the beginnings of both sides of the buckle ring can still be seen on the edges above the central bar. As these beginnings extend evenly, we can assume that the buckle ring itself was symmetrical. Together with the central bar and the beginning of the buckle ring, the plate with a recess for inserting the fabric can also be seen, as well as the base of the tongue. The two-piece buckles of the second burial horizon were found as individual artifacts within grave units, except in the case of Grave 183, where three metal appliquéés were also found. These appliquéés could have been parts of the deceased person's clothing or footwear.

The buckle from Grave 444 (Pl. 6: 40) could perhaps be added to the abovementioned buckles from the second horizon. It is a D-shaped buckle – in other words, it is circular, save for one straight side where the pin is attached. Still, as the buckle is only 20 mm long, it is more likely that it was part of some garment. A buckle of a similar shape was found at the Pakoštane – Crkvina site,<sup>92</sup> but it has twice the size of the Udbina specimen.

### Horizon 3

The final horizon at the cemetery began in the third decade of the 15<sup>th</sup> century and lasted into the first half of the 16<sup>th</sup> century. This horizon contains a total of 304 graves. The buckles belonging to this horizon were found in five graves, but only the ones from two of them can be associated with the deceased.<sup>93</sup> These two buckles are the ones found in Graves 34 and 187. In Grave 34 (Pl. 5: 34), a plain rectangular iron plate with a tongue was found. It is undecorated and rectangular and its horizontal sides are somewhat shorter than the vertical ones. Buckles like this one were found at Zagreb – Opatovina,<sup>94</sup> Ružica grad,<sup>95</sup> Vrh Rika – sv. Spas,<sup>96</sup> Bribir – Dol<sup>97</sup> and other sites. They can roughly be dated to the period between the 14<sup>th</sup> and 17<sup>th</sup> centuries.<sup>98</sup> The mushroom-shaped buckle from Grave 187 (Pl. 5: 30) has a longer height just like the other abovementioned specimens of this type.

91 K. Gusar, D. Vujević 2016, 34.

92 K. Gusar, D. Vujević 2013, 278, 290, 294. kat. br. 10.

93 Kopče su pronađene u grobovima 28, 34, 187, 360 i 416. Sudeći prema dokumentaciji, kopče iz grobova 28, 360 i 416 nisu direktno vezane za same ukope, odnosno mogu, ali i ne moraju nužno pripadati pokojnicima u blizini kojih su pronađene.

94 Ž. Demo 2007, 74–77, kat. br. 16.1, 16.2, 16.3, 16.4, 16.5.

95 M. Radić, Z. Bojčić 2004, 89, 90.

96 M. Petrincec 1996, 46, 99.

97 M. Zekan 1996, 51.

98 R. Whitehead 2003, 26.

88 Ž. Demo 2007, 81–82, cat. nos. 16.32, 16.33.

89 S. Krznar 2016, 92, cat. no. 166.

90 Dislocated in Grave 270. For more, see T. Burić 2001, 224, 283, 318.

91 K. Gusar, D. Vujević 2016, 34.

92 K. Gusar, D. Vujević 2013, 278, 290, 294. cat. no. 10.

93 The buckles were found in Graves 28, 34, 187, 360 and 416. Judging by the records, the buckles from Graves 28, 360 and 416 are not directly connected with the burials. In other words, they may or may have not belonged to the persons by whose remains they were found.

94 Ž. Demo 2007, 74–77, cat. nos. 16.1, 16.2, 16.3, 16.4, 16.5.

95 M. Radić, Z. Bojčić 2004, 89, 90.

96 M. Petrincec 1996, 46, 99.

97 M. Zekan 1996, 51.

98 R. Whitehead 2003, 26.

Najljepši primjerak ovog horizonta svakako je pojasna kopča iz groba 28 (T. 6: 38). Rađena je od bronce, a sačuvani su okov, pređica i trn. Kopča je D-oblika, odnosno osovina na kojoj se nalazi trn ravna je, dok su nasuprotni rubovi pređice blago zaobljeni. U dnu i vrhu prečke nalaze se ispupčeni vegetabilni motivi, a isti motiv javlja se i nasuprot trnu. Trokutastom profilacijom izrađen je utor za trn koji se nalazi na prečki. Čitava pređica ukrašena je vegetabilnim motivima koji su postignuti graviranjem. Okov je neukrašen te sadrži tek dva vodoravna utora koja su služila za pričvršćivanje tkanine. Sljedeći nalaz koji se može pripisati ovom horizontu jest jedna željezna alka pronađena u grobu 416 (T. 1: 5) pri uklanjanju kostiju lijevog lakta pokojnika. S obzirom na položaj pronađene alke u grobu, njezine dimenzije te činjenicu da trn nije pronađen, sasvim je moguće da je bila sastavni dio odjeće, a ne pojasne garniture.

### Pojasne kopče s lokaliteta Udbina – Sv. Jakov izvan grobnih cjelina

Osim kopči pronađenih u grobovima zabilježene su i druge koje su pronađene izvan grobnih cjelina pri arheološkim iskopanjima. Iz tog konteksta poznato je osam kopči i dvije alke. Od osam pronađenih, četiri su kružnog oblika. Tri kopče izrađene su od bronce te imaju pomičan trn na alki.<sup>99</sup> Dvije kružne kopče (T. 1: 7, 8) pronađene su u paru te imaju dekoraciju u vidu tri rebra na početku trna.<sup>100</sup> Trn treće brončane kopče (T. 1: 1) ukrašen je kvadratom rađenim u plitkom reljefu.<sup>101</sup> Osim navedenih brončanih, pronađena je i jedna željezna kopča kružna oblika s trnom (T. 1: 2).<sup>102</sup> Kopča je bez ukrasa, a alka je kao i kod brončanih kružnog oblika sa zaobljenim krajevima i ravnom površinom. Alke pronađene na lokalitetu rađene su od željeza i bronce. Željezna alka (T. 1: 4) nešto je manjih dimenzija i slabije očuvanosti naspram brončane alke (T. 1: 3) koja je jednaka alkama korištenim u prvom horizontu ukapanja.<sup>103</sup> Osim spomenutih, otkrivena je željezna glijivasta kopča (T. 5: 29)<sup>104</sup> izdužena po visini i bez sačuvanog trna te druga izdužena glijivasta kopča (T. 5: 30)<sup>105</sup> koja osim utora za trn na suprotnoj strani prečke sadrži i jednostavne ukrase nastale urezivanjem. Zabilježena je i jedna kvadratna kopča (T. 5: 35)<sup>106</sup> te jedna dvodijelna simetrična kopča (T. 7: 42)<sup>107</sup> s jednostavnom dekoracijom na završetcima središnje prečke.

99 Dvije su pronađene 2005. godine u sjeveroistočnom uglu kapele pri uklanjanju dislociranih kostiju, dok je treća kopča pronađena 2009. godine u kv. 3 također pri uklanjanju dislociranih kostiju.

100 Pronađene 2005. godine u sjeveroistočnom uglu kapele pri uklanjanju dislociranih kostiju.

101 Pronađena 2009. godine u kv. 3 pri uklanjanju dislociranih kostiju.

102 Pronađena je 2015. godine uz južni zid broda.

103 Željezna alka otkrivena je prilikom istraživanja 2008. godine, dok je brončana alka otkrivena 2015. godine uz južni zid crkve, u sloju dislociranih kostiju i bojene žbuke.

104 Otkrivena 2004. godine pri iskopu.

105 Pronađena 2013. godine pri skidanju površinskog sloja u kv. 16.

106 Otkrivena pri istraživanju 2008. godine s jugozapadne strane zida F.

107 Otkrivena 2016. godine u kv. A.

One tongue is partially preserved, but the buckle's height suggests that it probably had not less than two tongues. The mushroom-shaped buckle from Grave 360 (Pl. 5: 31) is of the same shape, but of a larger size. Both of its tongues have been preserved. In both graves, the buckles were the only artifacts found next to the remains of the deceased.

The belt buckle from Grave 28 (Pl. 6: 38) is certainly the most beautiful specimen from this horizon. It is made of bronze and its fittings, buckle ring and tongue have been preserved. It is a D-shaped buckle, which means that the axis on which the tongue is fixed is straight, while the opposing edges of the buckle ring are slightly rounded. At the bottom and the top of the bar, protruding plant motifs can be seen. Such motif can also be seen facing the tongue. A groove in the form of triangular molding was made to receive the tongue on the bar. Plant motifs are engraved on the entire buckle ring. The fitting is undecorated; it merely has two horizontal grooves for fastening the fabric. The next find that could be attributed to this horizon is an iron loop discovered in Grave 416 (Pl. 1: 5) when bones were removed from the left elbow of the deceased. Given the loop's position in the grave, its size and the fact that the tongue has not been found, it is quite possible that the loop was part of the clothes and not of the belt set.

### Belt buckles found outside grave units at the Udbina – Sv. Jakov site

In addition to the buckles found in graves, there were other that were found outside the grave units during archaeological excavations. Eight such buckles and two loops are known. Of these eight buckles, four of them are round buckles. Three of them are made of bronze and have a movable tongue on the loop.<sup>99</sup> Two round buckles (Pl. 1: 7, 8) were found together. Both have three ribs at the tongue base as a decoration.<sup>100</sup> The tongue of the third bronze buckle (Pl. 1: 1) is decorated with a bas-relief square.<sup>101</sup> Along with these bronze buckles, a round iron buckle with a tongue was also found (Pl. 1: 2).<sup>102</sup> This buckle is undecorated and the loop has rounded edges and flat surface, just like the round bronze buckles. The loops found at the site are made of iron and bronze. The iron loop (Pl. 1: 4) is of a somewhat smaller size and in a poorer condition than the bronze loop (Pl. 1: 3), which is identical to the loops used in the first burial horizon.<sup>103</sup> In addition to these, an iron mushroom-shaped buckle (Pl. 5: 29)<sup>104</sup> was also discovered. It

99 Two were found in 2005, in the northeastern corner of the chapel, when dislocated bones were being removed. The third buckle was found in Quadrant 3 in 2009, also when dislocated bones were being removed.

100 Found in 2005 in the northeastern corner of the chapel, when dislocated bones were being removed.

101 Found in 2009, Quadrant 3, when dislocated bones were being removed.

102 Found in 2015, by the southern wall of the nave.

103 The iron loop was discovered during the 2008 campaign. The bronze loop was discovered in 2015, by the church's south wall, in a layer of dislocated bones and painted plaster.

104 Found during the 2004 excavation.

## ZAKLJUČAK

Arheološkim istraživanjem na lokalitetu Udbina – Sv. Jakov u razdoblju od 2000. do 2020. godine otkriveno je četredeset i šest pojasnih kopči. Pronađene kopče bile su jednostrojne, dvodijelne te kopče s pločicom. Tipološki se dijele na kopče kružnog oblika, gljivasta oblika, pravokutne, oblika izduženog pravokutnika, D-oblika te dvodijelne simetrične i asimetrične kopče.

Prvim horizontom ukapanja dominiraju kružne pojasne kopče uz sporadičnu pojavu i drugih tipova kao što su pravokutne, oblika izduženog pravokutnika, gljivaste, kopče D-oblika te se javlja i specifična srebrna i koštana pojasna garnitura. Najčešće kopče drugog horizonta ukapanja svakako su one gljivasta oblika, a uz njih se javljaju još i dvodijelne simetrične i asimetrične kopče te jedna manja kopča D-oblika. Posljednji horizont ukapanja obilježava sve rjeđa pojava pojasnih kopči te se svega dvije kopče mogu izravno vezati za pokojnike i ne može se izdvojiti dominantni tip kopče. Jedna je kopča gljivasta, dok je druga pravokutna oblika. Izostanak kopči u posljednjem horizontu ukapanja možebitno sugerira i pojavu nove populacije koja polaže svoje pokojnike u drukčijoj odjeći, a postoji i mogućnost da se radi o promjeni u modi.

Pregledom čitave građe ustanovljeno je da ne postoji korelacija između pojedinih predmeta pronađenih unutar grobnih cjelina i pojasnih kopči, odnosno pojasne kopče ne javljaju u paru s nekim artefaktom, već predstavljaju samostalnu pojavu neovisnu o drugim artefaktima. Činjenica da se gotovo sve obrađene kopče upotrebljavaju tijekom razdoblja od nekoliko stoljeća uvelike otežava dataciju te je najčešće potrebno pratiti stratigrafiju lokaliteta ili uzeti u obzir druge databilnije artefakte unutar grobne cjeline da bi se mogao iznijeti konkretan zaključak. Specifičnu pojavu predstavljaju srebrna i koštana pojasna garnitura koje su zbog detaljnih ukrasa i dostupnih analogija databilnije naspram ostalih primjeraka. Daljnja arheološka istraživanja i publiciranje pronađene građe zasigurno će doprinijeti preciznijoj dataciji te poznavanju razvoja i uporabe pojasnih kopči tijekom srednjeg i ranog novog vijeka.

is elongated along its height and with no tongue(s) preserved. Another elongated mushroom-shaped buckle (Pl. 5: 30)<sup>105</sup> was also found. It has a groove for the tongue on the opposite side of the bar and plain incised decorations. A square buckle (Pl. 5: 35)<sup>106</sup> and a two-piece symmetrical buckle (Pl. 7: 42)<sup>107</sup> with plain decoration at the ends of the central bar were also recorded.

## CONCLUSIONS

The archaeological excavations carried out at the Udbina–Sv. Jakov site between 2000 and 2020 yielded as many as 46 belt buckles. These included one-piece and two-piece buckles and buckles with plates. Typologically, they are classified as round buckles, mushroom-shaped buckles, rectangular buckles, elongated rectangular buckles, D-shaped buckles and two-piece symmetrical and asymmetrical buckles.

Predominant in the first burial horizon are the round belt buckles. There were also sporadic finds of rectangular, elongated rectangular, mushroom-shaped and D-shaped buckles at this horizon. Specific silver and bone belt sets were also found there. The most common in the second burial horizon are the mushroom-shaped buckles. Two-piece symmetrical and asymmetrical buckles and a small D-shaped buckle were also found here. The final burial horizon is characterized by rarer occurrence of belt buckles. Only two buckles can be directly connected with the deceased. Also, there is no predominant type of buckles at this horizon. One buckle is of the mushroom-shape type and the other is rectangular. This lack of buckles at the final horizon could perhaps indicate the advent of a new population that buried their deceased in different clothes. This could also suggest a change in the fashion of the day.

Having analyzed all the finds, we have established that there was no correlation between belt buckles and individual artifacts found in grave units. In other words, belt buckles do not come in pairs with other artifacts. Instead, they are to be perceived independently from them. The fact that almost all of the buckles analyzed here were in use over a period of a few centuries makes their dating much harder. This is why dating must usually rely on the stratigraphy of the site and on other, more datable artifacts within a grave unit in order to reach concrete conclusions. Very specific finds here are the silver and bone belt sets. Owing to detailed decorations and available analogies, they are more datable than the other specimens. Further archaeological excavations and publication of the finds will certainly enable more accurate dating and help us gain a deeper insight into the evolution and use of belt buckles in Middle Ages and Early Modern Age.

105 Found in 2013, when the surface layer in Quadrant 16 was being removed.

106 Found during the 2008 excavation, southwest of the F wall.

107 Discovered in Quadrant A in 2016.



1



2



3



4



5



6



7



8



9





10



11



12



13



14



15





16



17



18



185



19



20





21



22



23



24



25



26





27



28



29



30



31



32



33



34



35



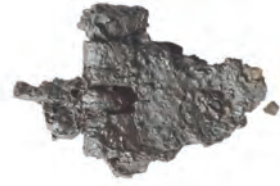




36



42



43



44



45



46



## Literatura / Bibliography

- Anzulović, I. 2007 – Ukrasno uporabni predmeti na zadarskom području u povijesnim izvorima od 13. do konca 16. stoljeća, *Radovi Zavoda za povijesne znanosti HAZU u Zadru* 49, Zadar, 239–287.
- Azinović Bebek, A., Janeš A. 2016 – Groblje oko crkve Sv. Nikole Biskupa u Žumberku, Groblja i pogrebni običaji u srednjem i ranom novom vijeku na prostoru sjeverne Hrvatske u: *Zbornik radova prvog međunarodnog znanstvenog skupa srednjovjekovne arheologije Instituta za arheologiju, Zagreb 4. lipnja 2014.*, Zbornik instituta za arheologiju, vol. 4, Krznar S. (ur.), Zagreb, 123–139.
- Belaj, J. 2008 – *Ivanec kroz slojeve prošlosti, Deset godina arheoloških istraživanja u Ivanecu*, Ivanec.
- Belaj, J. 2010 – Prikaz arheoloških istraživanja crkve Uznesenja Blažene Djevice Marije u Gori tijekom 2008. i 2009. godine u: *Antiquam fidem, Zbornik radova sa znanstvenog simpozija o Sisačkoj biskupiji, Sisak, 3. – 4. 12. 2010.*, Tepert, D., Jurić, S. (ur.), Sisak, 121–147.
- Belošević, J. 1997 – Osvrt na konačne ishode istraživanja položaja Crkvine u selu Galovcu kod Zadra, *Diadora* 18–19 (1996–1997), Zadar, 301–350.
- Burazer, B. 2019 – *Arheološki nalazi kopča od 12. do 17. stoljeća u Hrvatskoj*, Diplomski rad, Sveučilište u Zadru, Zadar.
- Burić, T. 2001 – Putalj u srednjem vijeku, u: *Sv. Juraj od Putalja*, Milošević, A. (ur.), Split, 151–322.
- Burić, T., Anterić, I., Babin, M., Milić, M. 2013 – *Baba lokva: kasno srednjovjekovno naselje*, Split.
- Demo, Ž. 2007 – *Opatovina: tragovi povijesti izgubljeni u sadašnjosti, Rezultati arheoloških istraživanja pred crkvom svetog Franje u Zagrebu 2002. godine*, Zagreb.
- Demo, Ž. 2014 – *Zlato & srebro srednjeg vijeka u Arheološkom muzeju u Zagrebu*, Zagreb.
- Dugonjić, A. 2017 – Medieval settlement at the site Franjevac near Đakovo, *Srednjovjekovna naselja u svjetlu arheoloških izvora*, Zbornik instituta za arheologiju, vol. 6, Zagreb, 293–336.
- Egan, G., Pritchard, F. 1991 – *Medieval finds from excavations in London: 3 Dress Accessories c. 1150 – c. 1450*, London.
- Gjurašin, H. 2010 – Dugopolje – Vučipolje – Crkvine, kasnosrednjovjekovno groblje (istraživanja 2004./ 2005. godine), *Starohrvatska prosvjeta* III. serija 37, Split, 111–133.
- Gunjača, S. 1955 – Starohrvatska crkva i kasnosrednjovjekovno groblje u Brnazima kod Sinja, *Starohrvatska prosvjeta* III. serija 4, Zagreb, 85–134.
- Gusar, K., Ćurković, M. 2011 – *Utvrdna Kličevica – rezultati arheoloških istraživanja 1990. godine*, Benkovac.
- Gusar, K., Vujević, D. 2013 – Grob 75 s lokaliteta Pakoštane-Crkvina, *Archaeologia Adriatica*, VII, Zadar, 271–300.
- Gusar, K., Vujević, D. 2016 – *Utvrdna u Zemunik Donjem u srednjem i novom vijeku, Rezultati arheoloških istraživanja 2014. godine*, Zadar.
- Janeš, A. 2017 – Keramički, stakleni i metalni nalazi u: *Tihi svjedoci vjere, baštine i raskoši. Crkva sv. Nikole biskupa u Žumberku, konzervatorsko-restauratorski radovi*, Azinović Bebek, A. (ur.), Zagreb, 52–61.
- Jelovina D., Vrsalović, D. 1981 – Srednjovjekovno groblje na Begovači u selu Biljanima Donjim kod Zadra, *Starohrvatska prosvjeta* III. serija 11, Zagreb, 55–136.
- Jurić, R. 2009 – Arheološka istraživanja katedrale Sv. Jakova u Krbavi (Udbina, 2000–2006), u: *Identitet Like: korijeni i razvitak, Zbornik radova, knjiga 2*, Holjevac, Ž. (ur.), Zagreb–Gospić, 493–511.
- Jurić, R. 2014 – Kasnosrednjovjekovni grob 195 iz sklopa katedrale sv. Jakova u Udbini, *Senjski zbornik* 41, Senj 117–130.
- Krznar, S. 2016 – Cirkvišće, ritualno mjesto starih Torčanaca, u: *Arheologija Torčeca, Izbor iz Arheološke zbirke obitelji Zvijerac*, Ćimin R. (ur.), Koprivnica.
- Petrinec, M. 1996 – Kasnosrednjovjekovno groblje kod crkve Sv. Spasa u Vrh Rici, *Starohrvatska prosvjeta* III. serija 23, Split, 7–138.
- Petrinec, M. 2000 – Izvještaj o arheološkim iskopavanjima crkve Sv. Petra na Kuli Atlagića, *Starohrvatska prosvjeta* III. serija 27, Split, 219–226.
- Radić, M., Bojčić, Z. 2004. – *Srednjovjekovni grad Ružica*, Osijek.
- Sekelj Ivančan, T., Tkalčec, T. 2003. – Arheološko nalazište Torčec – Cirkvišće, *Podravina* 2 (4), Koprivnica, 5–36.
- Tait, H. (ur.) 2007 – *7000 Years of Jewellery*, London, 2006.
- Tomičić, Ž., Jelinčić, K., 2011 – *Suhopolje – Kliškovac. Od mjestopisa do arheološke spoznaje*, Zagreb.
- Vučić, J. 2020 – Limoško raspelo iz groba u krbavskoj katedrali, *Vjesnik Arheološkog muzeja u Zagrebu* 53 (1), Zagreb, 161–170.
- Vučić, J. 2021 – Studija slučaja krbavske stolnice – prilog datiranju kasnosrednjovjekovnog nakita i dijelova nošnje, *Diadora* 35, Zadar, 195–240.
- Whitehead, R. 2003 – *Buckles 1250–1800*, Greenlight Publishing.
- Zekan, M. 1996 – Pet srednjovjekovnih nekropola, u: *Bribir u srednjem vijeku*, Milošević, A. (ur.), Split, 43–66.