

Boris Čargo

Helenistički grobovi kod rasadnika palmi u Visu Hellenistic graves at the palm nursery in Vis

Boris Čargo
HR, 21000 Split
Arheološki muzej - Split
Zrinsko-Frankopanska 25
boris.cargo@armus.hr

UDK: 904:738.8(497.5 Vis)“652”

Izvorni znanstveni članak

Primljeno: 30. 4. 2008.

Prihvaćeno: 12. 5. 2008.

Boris Čargo
Croatia, 21000 Split
Archaeological museum - Split
Zrinsko-Frankopanska 25
boris.cargo@armus.hr

UDK: 904:738.8(497.5 Vis)“652”

Original scientific paper

Received: 30 April 2008

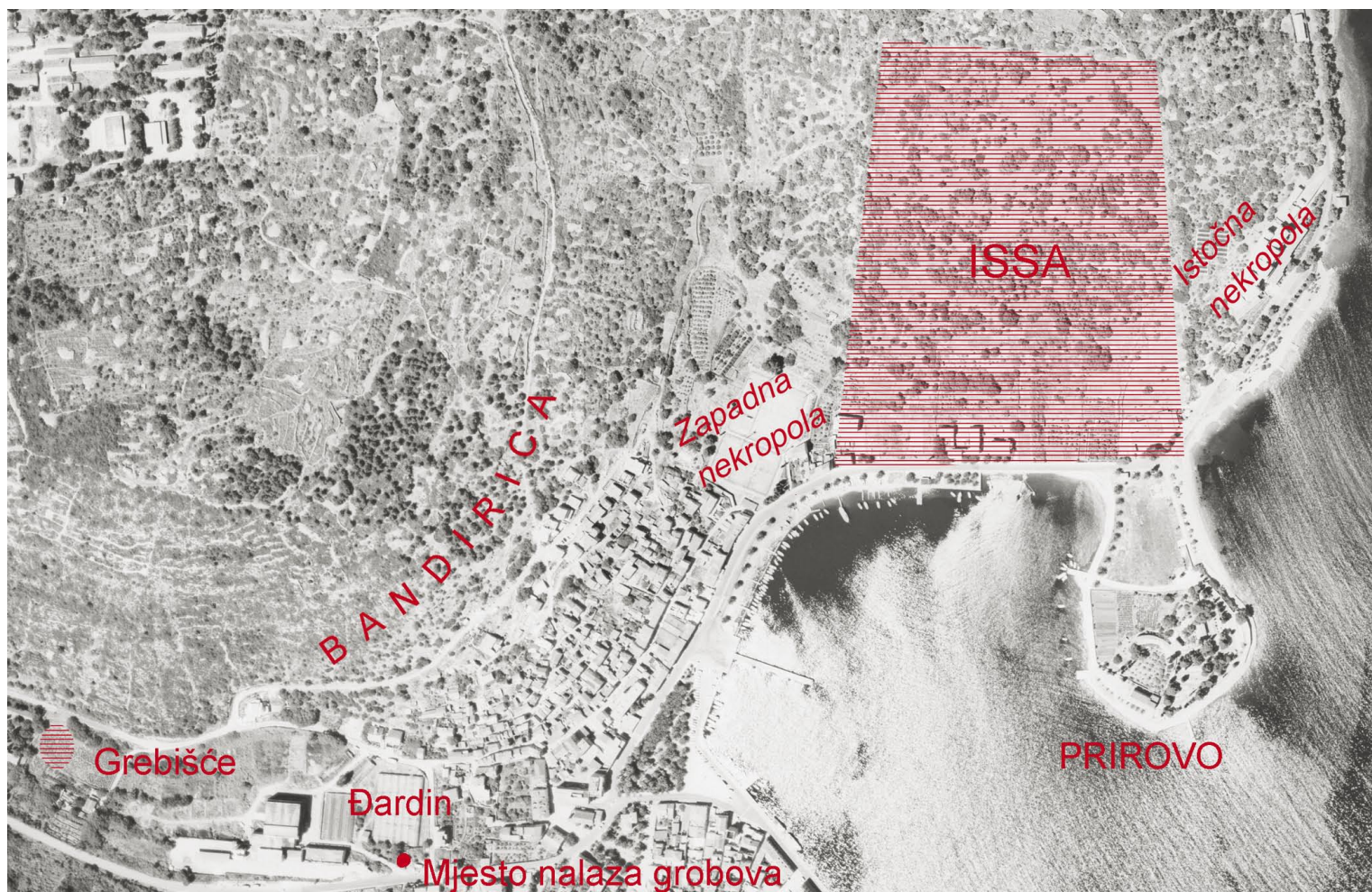
Accepted: 12 May 2008

U tekstu se objavljuju tri helenističke grobnice s brojnim keramičkim priložima pronađene godine 1952. kod rasadnika palmi u Visu. Autor iznosi mišljenje da su pronađeni grobovi bili smješteni uz gospodarski objekt, nasuprot mišljenju da se radi o novoj isejskoj nekropoli. U grobove je bilo položeno od 31 do 37 predmeta, koji pripadaju različitim keramičkim stilovima: gornjojadranskoj keramici, *Gnathia* keramici, keramici s crnim premazom te običnoj finoj keramici (*plain ware*). U grobovima je nađen i jedan željezni strigil. Nije nam poznato koji su predmeti pripadali kojoj grobnici, jer su do dolaska arheologa svi nalazi već bili izvađeni iz grobnica. S obzirom na brojnost pojedinih predmeta i samo tri groba, autor pretpostavlja da je svaki grob sadržavao oinohou, peliku, skifos i piksidu, dakle predmete koji se mogu vezati uz kulturu pijenja vina (osim pikside) i koji svjedoče da je vinogradarstvo i vino imalo istaknutu ulogu u gospodarstvu i životu isejske zajednice, što se ogleda i u pogrebnom ritualu. Ukopi kod rasadnika započeli su krajem 4. ili na samom početku 3. st. pr. Kr. istovremeni su i tipološki istovjetni s onima na Martvilu i Vlaškoj njivi (zapadnoj i istočnoj isejskoj nekropoli). Ukopi su iz razdoblja potpune afirmacije grada, kada Issa, kao grad rastućeg gospodarstva, započinje penetraciju na okolne južnojadranske i srednjoadranske prostore istočnog dijela Jadrana, s ciljem osnivanja vlastitih naseobina i svetišta, stvarajući svoju *sympoliteia*.

Ključne riječi: Vis, Issa, rasadnik palmi, Đardin, grobnice, nekropola, helenistička keramika, južna Italija, Velika Grčka, Apulija

This text contains a publication of three Hellenistic graves with numerous ceramic goods discovered at a palm nursery in Vis in 1952. The author expresses the opinion that the discovered graves were inside a farm building, in contrast to the view that this is a new Issa necropolis. 31 to 37 items were placed in each grave, which can be classified in various pottery styles: Upper Adriatic ware, Gnathian ware, black gloss ware and plain ware. An iron strigil was also found in the graves. Which items belonged to which grave is not known, because by the time archaeologists had arrived on the scene, all of the items had been removed from the graves. Given the high number of items and only three graves, this author assumes that each grave contained oinochoes, pelikai, skyphoi and pyxides, meaning items which may be associated with a wine-drinking culture (except the pyxides) and which testify to the fact that viniculture and wine played a major role in the economy and life of the Issa community, which is also reflected in burial rites. Interments at the nursery began at the late fourth or early third century BC, and they were contemporary and typologically identical to those at Martvilo and Vlaška njiva (the western and eastern Issa necropolises). The burials were from the era of full affirmation of the city, when Issa, as a city with a flourishing economy, began to penetrate into the surrounding southern and central zones of the Eastern Adriatic, with the goal of establishing their own settlements and shrines, creating their own *sympoliteia*.

Key words: Vis, Issa, palm nursery, Đardin, graves, necropolis, Hellenistic pottery, Southern Italy, Magna Graecia, Apulia



Slika 1.

Položaj Isse i njezinih nekropola, te mjesto nalaza helenističkih grobova kod rasadnika palmi (Đardin)

Figure 1.

Location of Issa and its necropolises, and discovery site of Hellenistic graves at the palm nursery (Đardin)

Prigodom temeljnog iskopa za radove na izgradnji trafostanice u blizini rasadnika palmi u gradu Visu, 5. rujna godine 1952. pronađeni su grobovi, te je o tome obaviješten splitski Arheološki muzej.¹ Rasadnik palmi nalazi se na zapadnoj strani grada Visa, na samom ulazu u grad sa zapada (sl. 1). U trenutku pronalaska grobova taj dio grada bio je periferan i slabije naseljen, a ime *Đardin* dobio je nakon što je viška obitelj Dojmi na tome mjestu zasadila rasadnik palmi koji je tada bio jedan od većih u Europi. Kako su Dojmijevi među palmama izlagali pojedine kamene spomenike iz svoje zbirke, viški je puk cijeli prostor doživljavao kao svojevrsan perivoj te ga je i nazvao lokalnim izrazom *Đardin*.²

U iskapanom prostoru od približno 16 metara četvornih pronađeni su tri grobnice, na dubini od 90 do 130 cm, s keramičkim prilozima.³ Odmah nakon dojave o nalazu na očevid

During foundational excavations for construction of a transformer station near the palm nursery in the town of Vis, on 5 September 1952, graves were found and the Archaeological Museum in Split was informed thereof.¹ The palm nursery is on the western side of Vis, at the very entrance to the town (Fig. 1). At the time of discovery of the graves, this part of town was peripheral and sparsely inhabited, and it was given the name *Đardin* after the Dojmi family of Vis began exhibiting individual stone monuments from their collection among the palm trees, so the people of Vis saw the entire area as something of a landscaped garden and referred to it with the local expression *Đardin*.²

In an excavated area of approximately 16 square meters, three graves were found at depths of 90 to 130 cm, with ceramic accessories.³ Immediately after the discovery was reported, M. Nikolanci arrived to inspect the site, and he collected the items,

1 Zahvaljujem Miranu Palčoku na crtežima predmeta, Branku Penđeru i Zoranu Podrugu na crtežima i računalnoj obradi predmeta te Tonću Seseu na izrađenim fotografijama.

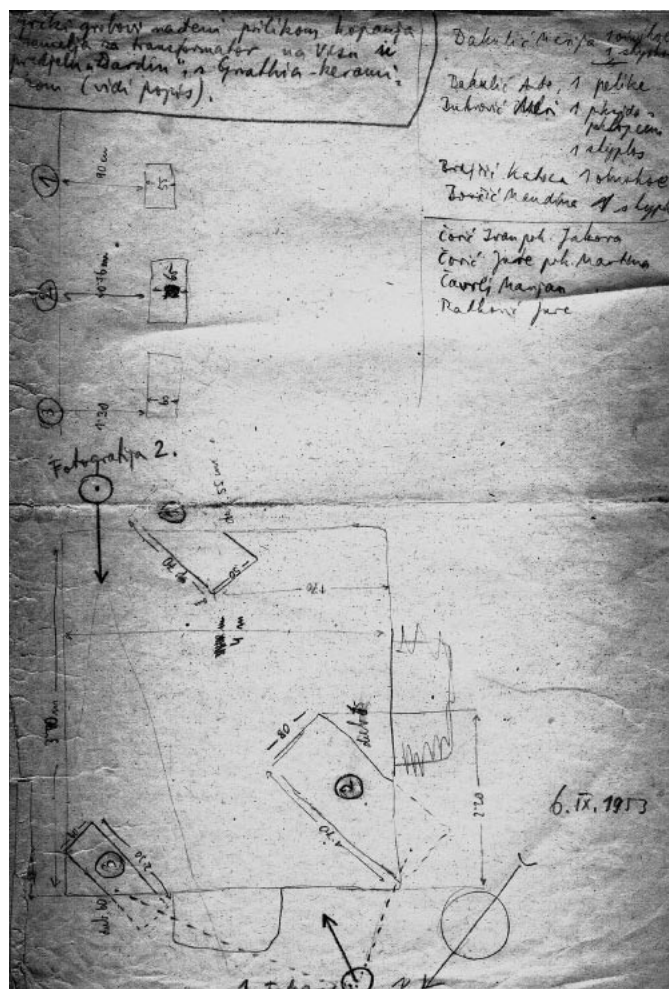
2 Abramić 1949, str. 12.

3 Nikolanci 1954, str. 191-192.

1 I would like to thank Miran Palčok for the drawings of items, Branko Penđer and Zoran Podrug for the drawings and computer processing of the items and Tonći Seseu for the developed photographs.

2 Abramić 1949, p. 12.

3 Nikolanci 1954, pp. 191-192.



Slika 2.
Nikolancijeva shema položaja grobova kod rasadnika palmi

Figure 2.
Nikolanci's diagram of grave locations at the palm nursery

je izašao M. Nikolanci, koji je prikupio predmete, napravio shemu situacije sa svim mjerama te načinio nekoliko fotografija (sl. 2).

Pronađene grobnice na shemi su označene brojevima: prva se nalazila u jugoistočnom dijelu iskopane četvorine, druga u sjeverozapadnom kutu, a treća u sjevernom. Prva i druga grobnica bile su izrađene od okomito postavljenih kamenih ploča, poprimajući oblik kamenog sanduka (sl. 3), dok je treća bila izrađena od kamenih klesanaca i, prema svjedočenju radnika, iznutra oblijepljena ilovačom (sl. 4). Grobnice su bile jednako orijentirane, u smjeru istok-zapad. U svima su se nalazile keramičke posude, koje su prenesene u splitski Arheološki muzej, gdje su pohranjene i uvedene u inventarne knjige.

Dimenzije prve grobnice su 170 x 0,80 cm, dubine 65 cm, druge 170 x 50 cm, dubine 55 cm, dok su dimenzije treće 230 x 60 cm, dubine 60 cm. Dosad na prostoru Isse nije pronađena ni jedna grobnica dužine ove potonje, pa bi to bila najduža pronađena do sada. Iako nema detaljnog opisa grobnica, sasvim je sigurno da su sve bile zatvorene kamenim pločama. Dno grobnica ostaje nepoznanica, no na temelju paralela s onima na Martvilu, zapadnoj isejskoj nekropoli, možemo pretpostaviti da je dno grobnica činila kamena litica s tankim slojem zemlje nad

sketched a diagram of the situation with all measurements and took several photographs (Fig. 2).

The graves are designated by numbers on the diagram: the first was in the south-east part of the excavated square, the second in the north-west corner, and the third in the northern corner. The first and second graves were made of vertically placed stone plates, forming a stone cist (Fig. 3), while the third was made of dressed stones and, according to the testimony of the workers, bound with loam inside (Fig. 4). The graves were oriented in the same direction, east-west. All contained ceramic vessels, which were taken to the Archaeological Museum in Split, where they were stored and registered in the inventory logs.

The dimensions of the graves are: 170 x 0.80 cm, depth 65 cm - first grave; 170 x 50 cm, depth 55 cm - second grave; 230 x 60 cm, depth 60 cm - third grave. Thus far, no graves were found in Issa with the length of the latter, so it is the longest so far found. Even though there are no detailed descriptions of the graves, it is certain that they were closed with stone slabs. The bottom of the graves remains unknown, but based on comparisons with those in Martvilo, the western Issa necropolis, it can be assumed that the bottom of the graves consisted of solid rock covered by a thin layer of soil formed by decomposition of organic matter and sedimentation.⁴ The third grave was plastered, and the workers mentioned loam, but so far not one case of binding of inside walls with loam has been found in Issa. Graves of this type usually are plastered, so one can assume that the workers misinterpreted what they saw. The poor condition of the plaster probably contributed to this misinterpretation, as it largely fell off of the walls, which can be seen in the photograph (Fig. 4). Nikolanci did not record any data on the discovery of headstones, but some future research in this area may also result in such finds. Graves constructed in this fashion are the type most frequent in the Issa necropolises.⁵

The discovery of Greek graves at this site was unexpected, because the site is about six hundred meters from most graves at Martvilo, where, as a rule, all Greek graves had been located until then. Despite the fact that no new burials were found in the area examined between the graves, nor was the research area expanded, based on the relief features of the surrounding terrain, Nikolanci assumed the existence of necropolis: "...this is clearly a new necropolis, given the terrain, which is in a depression, and not a lone group of several graves, which can be found situated among fissures in stone in rocky zones."⁶

Approximately two hundred meters west of this location there is a tract called Grebišće. Although this name is quite interesting from the archaeological point of view, for now there is only one known grave at this site. This is known thanks to a letter sent by Vis native G. Lučić Roki in December 1932 to M. Abramić, in which he

4 Most often the bottom of graves at Martvilo is flattened solid stone, while only individual graves are lined with thin stone tiles or sometimes gravel from the sea or sea snail shells, Kirigin, Marin 1985a, pp. 46, 50.

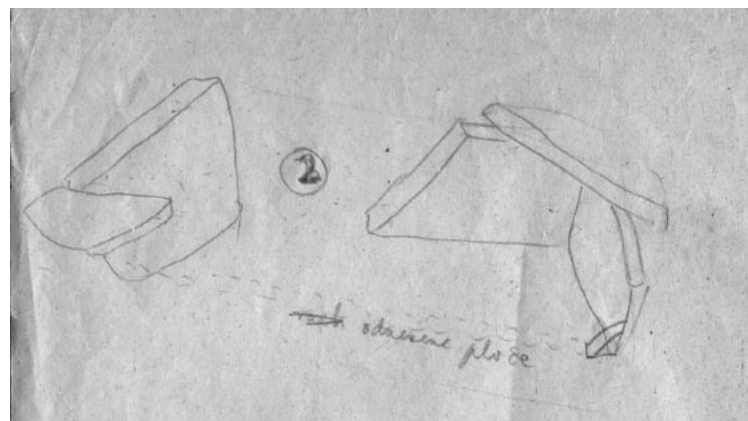
5 On the types of Issa graves, Nikolanci 1969, pp. 33-34; Cambi, Kirigin, Marin 1981a, pp. 64-67; for the same article in English: Cambi, Kirigin, Marin 1981b, 83-86.

6 Nikolanci 1952, pp. 191-192.

njom, koji je nastao raspadanjem organskih tvari i taloženjem.⁴ Treća grobnica je bila ožbukana; radnici spominju ilovaču, no do sada među isejskim grobovima nije zabilježen ni jedan slučaj obljepjivanja unutarnjih zidnih stijenci ilovačom. Grobnice ovakvog tipa najčešće se ožbukavaju, pa valja pretpostaviti da su radnici krivo interpretirali viđenu situaciju. Pogrešnom tumačenju vjerojatno je pridonjelo i loše stanje žbuke koja je u većoj mjeri otpala sa zidnih stijenci, što se vidi na sačuvanoj fotografiji (sl. 4). Nikolanci ne bilježi ni jedan podatak o nalasku nadgrobnih spomenika, no neka buduća istraživanja na ovom prostoru mogla bi rezultirati i takvim nalazom. Ovako građene grobnice najčešći su tipovi grobnica na isejskim nekropolama.⁵

Nalaz grčkih grobova na ovome mjestu bio je neočekivan, jer je položaj kojih šesto metara udaljen od glavnine grobova na Martvilu, gdje su se do tada u pravilu pronalazili svi grčki grobovi. Unatoč tome što se u istraživanom prostoru između grobova nije našlo novih ukopa, niti se pristupilo proširenju istraživanog prostora, Nikolanci je na temelju reljefnih značajki okolnog terena pretpostavio postojanje nekropole: *... jasno da se radi o novoj nekropoli, obzirom na teren, koji se nalazi u dolini, a ne o osamljenoj skupini od nekoliko grobova, kakvi se smještaju među usjeklinama kamena u kršu.*⁶

Dvjestotinjak metara zapadno od ove lokacije nalazi se predio koji se naziva Grebišće. Iako je taj naziv arheološki gledano veoma zanimljiv, za sada znamo za postojanje samo jednoga groba na tome mjestu. Taj podatak doznajemo iz pisma što ga je Višanin G. Lučić Roki uputio u prosincu 1932. g. M. Abramiću, u kojem ga izvještava o nalazima grobova na Visu od kojih se jedan nalazi u Grebišću, no bez ikakvih pobližih podataka o tome u kakvom su stanju i iz kojeg vremena.⁷ Iako se, sudeći po imenu, ovdje može očekivati još poneki nalaz, to će vjerojatno biti grobovi smješteni uz neki gospodarski objekt, a ne nekropola.⁸ S obzirom na udaljenost između rasadnika i Grebišća, nije moguće dovesti u vezu nalaze grobova na tim položajima.



Slika 3.
Nikolancijeva skica grobnice br. 2

Figure 3.
Nikolanci's diagram of grave no. 2



Slika 4.
Pogled na zidanu grobnicu br. 3

Figure 4.
View of dressed stone grave no. 3

4 Najčešće dno grobnica na Martvilu je poravnana kamena litica, dok tek pojedini grobovi imaju popločanje tankim kamenim pločama ili katkada morskim šljunkom, odnosno morskim puževima, Kirigin, Marin 1985a, str. 46, 50.

5 O tipovima isejskih grobova, Nikolanci 1969, str. 33-34; Cambi, Kirigin, Marin 1981a, str. 64-67; isti članak na engleskom jeziku, Cambi, Kirigin, Marin 1981b, 83-86.

6 Nikolanci 1954, str. 191-192.

7 Pismo je datirano 29. 12. 1932., a nalazi se u Abramićevom arhivu u splitskom Arheološkom muzeju.

8 Grob u Grebišću mogao je biti rimski, dapače, to je posve izgledno. Nešto dalje na zapad, u predjelu Dol, pronađeni su rimski grobovi, koji su nedvojbeno pripadali nekom gospodarskom objektu, također smještenom uz polje, Abramić 1949, str. 15. Obilascima terena na ovom području nalazi se samo rimska keramika, što osnažuje pretpostavku da su i grobovi nađeni na ovom području rimski, Kirigin et alii, 2006, str. 29, br. VS1061.00, VS1061.01, VS1061.02; str. 30, VS1063.00, VS1064.00, VS1067.00, 31, VS1070.00, VS1071.00.

reports on the discovery of graves on the island of Vis, of which one is at Grebišće, but without any more specific data on its condition or its time-frame.⁷ Although, judging by the name, a few other finds may be expected here, these will probably be graves next to some functional building, and not a necropolis.⁸ Given the distance

7 Letter dated 29 Dec. 1932, held in the Abramić Archives in the Archaeological Museum in Split.

8 The grave in Grebišće may have been Roman, and this is in fact entirely likely. Roman graves were found somewhat farther to the west, in the Dol area, and these definitely belonged to some non-residential building, which was also situated next to a field, Abramić 1949, p. 15. Only Roman ceramics were found during field tours in this area, which reinforces the hypothesis that the graves found here were Roman, Kirigin, et al., 2006, p. 29, no. VS1061.00, VS1061.01, VS1061.02; p. 30, VS1063.00, VS1064.00, VS1067.00, 31, VS1070.00, VS1071.00.

Za pretpostavku o postojanju još jedne nekropole kod rasadnika premalo je pokazatelj; izgled okoliša i njegove reljefne značajke ne mogu biti presudan čimbenik za donošenje zaključka o postojanju nekropole. Usto, grobovi se nisu nalazili u udolini, kako navodi Nikolanci, već na južnim padinama iznad polja.⁹ Ovdje se nikako ne smije isključiti mogućnost da su pronađeni grobovi bili smješteni uz neki gospodarski objekt koji se nalazio uz plodno polje. Dapače, to se čini posve izglednim, jer nije realno očekivati još jednu isejsku nekropolu pored onih na Martvilu i Vlaškoj njivi (zapadnoj i istočnoj isejskoj nekropoli). Ukopi kod rasadnika započeli su, što pokazuje prikazana analiza predmeta, krajem 4. st. ili na samom početku 3. st., dakle istovremeni su s pojedinim ukopima na Martvilu i Vlaškoj njivi, kada je na ovim nekropolama sasvim sigurno bilo dovoljno prostora za ukapanje. Grad u tom razdoblju nije mogao imati toliko brojnu populaciju da je imao potrebu za još jednom nekropolom, koja bi u ovom slučaju bila oko šesto metara udaljena od nekropole na Martvilu, a od zidina grada i više. Isto tako, grobovi kod rasadnika nisu mogli biti spojeni u jedinstvenu cjelinu s onima na Martvilu, jer je doista teško vjerovati da se u vrijeme kada datiramo prve ukope kod rasadnika, ta nekropola mogla toliko proširiti.¹⁰ Ovakvom razmišljanju ide u prilog i to što za sada nisu pronađeni arheološki nalazi iz razdoblja isejske samostalnosti na istočnim padinama brda Bandirice između Martvila i rasadnika, što također upućuje na zaključak da se radi o izoliranim ukopima.

Ove ukope vjerojatno treba vezati uz postojanje gospodarstva koje se nalazio u blizini, i to po svoj prilici u neposrednoj blizini puta koji je iz Isse vodio prema unutrašnjosti otoka. Sličnu situaciju nalazimo kod nedalekog Fara, gdje su petstotinjak metara od grada, na položajima Knežine, Čolovica, Garmice i Kučišće, pronađeni grobovi, koji se također vezuju uz gospodarstva.¹¹

Prema knjizi inventara, u grobovima su se nalazili sljedeći predmeti: 8 oinohoa (οἰνοχόη), 6 pelika (πέλικη) i 1 dno posude koje je vjerojatno pripadalo pelici, 10 skifosa (σκύφος), 5 piksida

between the nursery and Grebišće, it is not possible to link it to the discovery of graves at these positions.

There are too few indicators to back the hypothesis of yet another necropolis at the nursery; the surrounding landscape and its relief features cannot be a crucial factor to draw a conclusion on the existence of a necropolis. Also, the graves were not located in a depression, as Nikolanci stated, rather on the southern slopes above the field.⁹ Here one must not discount the possibility that the discovered graves were located next to a non-residential building situated next to a cultivated field. This in fact appears entirely likely, for it is unrealistic to expect another Issa necropolis besides those at Martvilo and Vlaška njiva (the western and eastern Issa necropolises). Burials at the nursery began - as indicated by the presented analysis of the items - in the late fourth or very beginning of the third century BC, thus at the same time as individual burials at Martvilo and Vlaška njiva, when there was certainly sufficient space at these necropolises for burials. During the period, the city could not have had a population large enough to require yet another necropolis, which in this case would be approximately six hundred meters from the necropolis at Martvilo, and even farther from the city's ramparts. By the same token, the graves at the nursery could not be connected into a single unit with those at Martvilo, for at the time to which the first burials at the nursery were dated, it is truly difficult to believe that the necropolis could have been so greatly expanded.¹⁰ Such considerations are also backed by the fact that so far no artefacts from the period of Issa's independence have been found on the eastern slopes of Bandirica Hill between Martvilo and the nursery, which also indicates that these were isolated burials.

These burials should probably be connected with the existence of a nearby farm, probably near a road which led from Issa to the island's interior. A similar situation can be found at none-too-distant Pharos, where, roughly five hundred meters from the town, graves were found at the Knežina, Čolovica, Garmica and Kučišća sites, also associated with farms.¹¹

According to the inventory log, the following items were in the graves: 8 oenochoes, 6 pelikai and 1 bottom of a vessel

9 Poljoprivrednim radovima u rasadniku koji se nalazi neposredno ispod mjesta nalaza grobova, nisu otkriveni nalazi drugih grobova. Kako je rasadnik bio u vlasništvu Dojmijevih, poznatih viških kolekcionara, teško je vjerovati da bi, da su postojali, ostali neprimjećeni. Danas je jedan dio okoliša izgrađen, no za vrijeme radova nisu zabilježeni grobni ostatci. Ni za najnovijih radova prigodom postavljanja elektroinstalacije na ovom prostoru nisu zabilježeni nalazi grobova. Ono što mogućnost nalaska ponekog groba na ovom prostoru ostavlja otvorenom, jest dubina 0,90-1,30 m na kojoj su se grobovi našli, pa je do njihovih ostataka teško doći plitkim iskopom; teško je međutim očekivati njihov veći broj.

10 To je primijetio i Nikolanci, u svom radu o jugozapadnoj nekropoli na Martvilu, Nikolanci 1969, str. 87.

11 Kirigin 2004, str. 185; Starinska iznašašća 1895, str. 70-72. Za predmete pronađene na tim lokacijama koji se čuvaju u splitskom Arheološkom muzeju, Miše 2005, str. 25-48.

9 No other graves were discovered during cultivation works carried out just below the site of the graves in the nursery. Since the nursery was owned by the Dojmis, well known collectors in Vis, it is difficult to believe that such articles would go unnoticed. Today a part of the surroundings are developed, and no grave remains were found during such works. Also, no discoveries of graves were registered during the most recent works to put in electrical installations. All that leaves open the possibility of finding some other grave in this area is the depth of .90 to 1.3 meters at which the graves were found, so it is difficult to find their remains in shallow excavations, although it is nonetheless difficult to expect a higher number.

10 This was also noticed by Nikolanci in his work on the south-west necropolis at Martvilo, Nikolanci 1969, p. 87.

11 Kirigin 2004, p. 185; Starinska iznašašća 1895, pp. 70-72. For the items found at these sites which are held in the Archaeological Museum in Split, see Miše 2005, pp. 25-48.

(*πυξίς*)¹², 3 unguentarija, 1 vrčić (*baby feeder*), 1 soljenka, 3 poklopca koji pripadaju nađenoj pelici i piksidama. Uz to, bio je pronađen i jedan duži komad željeza potpuno oksidiran, koji se pri vađenju raspao.¹³ Nikolanci spominje jednu peliku koja je bila razbijena nakon otkrivanja grobova; iz toga ne možemo zaključiti da se radi o br. 8, odnosno 14, ili o nekoj koja je bila u cijelosti uništena, te joj nisu sačuvani ni ulomci. Dakle, u grobove je bilo položeno najmanje 37 predmeta. Međutim, zbog nejasnog upisivanja u rubrici mjesta nalaska predmeta, nije posve sigurno potječe li šest predmeta koji su upisani u toj skupini zaista iz grobova kod rasadnika palmi.¹⁴ Nađeni predmeti pripadaju različitim keramičkim stilovima: gornjojadranskoj keramici (*Alto-Adriatico*), *Gnathia* keramici, keramici s crnim premazom te običnoj finoj keramici (*plain ware*).

Na žalost, nije moguće točno izdvojiti predmete koji bi pripadali pojedinoj grobnici, jer su do Nikolancijeva dolaska radnici i mještani već bili povadili predmete i, kako bilježi Nikolanci, dio njih razbili zajedno s lubanjama, a neke i otuđili. Sudeći, međutim, prema brojnosti tih predmeta i malom broju grobnica, s velikom sigurnošću možemo pretpostaviti da je svaka grobnica sadržavala oinohou, peliku, skifos i piksidu. Ovi su predmeti uz unguentarij najčešći inventar isejskih grobova na Martvilu.¹⁵ Kod svih pronađenih predmeta zamjetljiv je dobar lončarski rad, dok se nedostaci ogledaju ponajprije u lošem premazu i oslikavanju kod nekih posuda; premaz se ili izgubio ili poprimio smeđi ton.

Među pronađenim predmetima samo je jedna posuda gornjojadranskog tipa (*Alto Adriatico*), oinohoa br. 1. Kvalitetno je izrađena, s prednje strane ukrašena jednostavno izvedenim prikazom ženske glave okrenute udesno, a sa stražnje strane

which probably belonged to a pelike, 10 skyphoi, 5 pyxides¹², 3 unguentaria, 1 juglet (*baby feeder*), 1 salt cellar, 3 lids which belong to the pelikai and pyxides. Additionally, a long piece of entirely rusted iron was found, but it fell apart during extraction.¹³ Nikolanci mentioned a pelike which was broken after the discovery of the graves; based on this we cannot conclude whether it is no. 8 or 14, or some other which was entirely destroyed, with not even its fragments preserved. Thus, a minimum of 37 items were placed in the graves. However, due to the unclear entry in the section on the discovery site, it is not entirely certain whether six items entered in this group are truly from the palm nursery.¹⁴ The items found exhibit various ceramic styles: Upper Adriatic (*Alto-Adriatico*) ware, Gnathian ware, black gloss ware and plain ware.

Unfortunately, it is not possible to classify the items which would belong to an individual grave, for by the time of Nikolanci's arrival, the workers and local residents had already removed the items and, as Nikolanci recorded, broke some of them together with the skulls, and took some away. Judging, however, by the number of these items and the small number of graves, one can assume with great certainty that each grave contained oenochoes, pelikai, skyphoi and pyxides. These items, together with the unguentarium, are the most common inventory of Issa graves at Martvilo.¹⁵ On all items found, quality pottery work is noticeable, while any shortcomings are mainly apparent in the poor coating and decoration of certain vessels, which was either lost or acquired a brown tone.

Out of the items found, only one vessel is Upper Adriatic ware (*Alto Adriatico*), oenochoe no. 1. The work is fine, it is decorated on the front with a simply rendered depiction of a woman's head turned right, and with a palmette on the back. Most vessels of this style in Croatia have been discovered so far in Issa; with the

12 U hrvatskoj stručnoj literaturi posude ovakvog oblika često se nazivaju malim stamnosima jer njihov oblik podsjeća na veće stamnose. No dok su stamnosi, kao i krateri, služili za miješanje vina i vode te drugih tekućina ili za držanje nekih namirnica (Clark, Elston, Hart 2000, str. 146), namjena 'malih stamnosā' sasvim je drukčija. Vjerojatno se radi, kako je to predložio Kirigin, o piksidama manje ili više loptastog oblika, koje su lokalnog podrijetla. Te su posude, uz unguentarije, najčešći prilozi u isejskim grobovima, Kirigin 1990b, str. 306-308. Usporedi s oblikom piksida iz Taranta, Hempel 2001, str. 243, 252, 253.

13 Vidi katalog i tablicu na kraju teksta.

14 Iako je u knjigu inventara Fb II unesena pelika br. 13 (Fb 1616), te se ovdje obrađuje, čini se da je ona pogreškom dospjela među predmete iz rasadnika palmi. Nikolanci je u kratkom opisu uspoređuje s pelikom objavljenom u glasilu splitskog muzeja (Lisičar 1950, str. 46), međutim, ovdje radi se o istoj posudi koju Lisičar objavljuje 1950. g., dakle prije negoli su grobovi kod rasadnika otkriveni. Po svojoj prilici se radi o pogrešci te je ova pelika dospjela među predmete iz grobova kod rasadnika i kao takva je uvedena u knjigu inventara. Također, nije sasvim sigurno jesu li skifos br. 22 (Fb 1613), pelika br. 11 (Fb 1614), oinohoa br. 6 (Fb 1615), vrč s lijevkom br. 26 (Fb 1617) i piksida br. 32 (Fb 1618), bili položeni u grobove kod rasadnika.

15 Kirigin 1985, str. 102.

12 In the Croatian scholarly literature, vessels of this shape are often called small stamnoi because their form recalls larger stamnoi. However, the use of these small stamnoi in relation to the larger one which had uses similar to kraters for mixing wine and water, or other liquids and smaller ingredients (Clark, Elston, Hart 2000, p. 146), is entirely different. They are probably, as Kirigin proposed, more or less spherical pyxides of local origin. These vessels, together with unguentaria, are among the most frequent accessories in Issa graves, Kirigin 1990b, pp. 306-308. Compare with the shape of pyxides from Taranto, Hempel 2001, pp. 243, 252, 253.

13 See the catalogue and table at the end of the text.

14 Even though inventory log Fb II contains the entry of pelike no. 13 (Fb 1616), which is herein analyzed, it would appear that it found its way among the items from the palm nursery by mistake. Nikolanci, in a brief description, compared it to a pelike published in the bulletin of the Split museum (Lisičar 1950, p. 46); however, this is the same vessel which Lisičar published in 1950, i.e. before the graves at the nursery were discovered. Thus, this is an error, and this pelike was placed among the items from the graves at the nursery and as such registered in the inventory log. Also, it is not entirely certain as to whether skyphos no. 22 (Fb 1613), pelike no. 11 (Fb 1614), oenochoe no. 6 (Fb 1615), jug with spout no. 26 (Fb 1617) and pyxis no. 32 (Fb 1618), were placed in the graves at the nursery.

15 Kirigin 1985, p. 102.

palmetom. Na prostoru Isse do sada je pronađeno najviše posuda ovog stila u Hrvatskoj; uz iznimku jednog vrča širokog ravnog otvora i lekane, sve dosad pronađene posude su oinochoe.¹⁶ Za sada jedini pouzdani arheološki konteksti na prostoru Isse koji mogu pomoći pri dataciji ove oinochoe, su grobnica pronađena godine 1930.,¹⁷ te grobnice 65a i 90 otkrivene na istočnoj isejskoj nekropoli. U njima su pronađene oinochoe sličnog oblika, a datirane su u kraj 4. st. pr. Kr.¹⁸

Ovaj keramički stil razvio se u lončarskim radionicama gradova sjevernog Jadrana, Spine i Adrije, a vrhunac proizvodnje postignut je krajem 4. st. i u prvoj polovici 3. st. pr. Kr.¹⁹ Općenito se smatra da je u Spini krajem 4. st. pr. Kr. započela s radom prva lončarska radionica koja je proizvodila ovu vrstu keramike, a potom i radionica u Adriji, početkom 3. st. pr. Kr.²⁰ Oinochoa nađena kod rasadnika po svoj prilici proizvedena u Spini i bila je uvozni artikl u Issu, te svjedoči o vezama između Isse i gradova sjevernog Jadrana krajem 4. st. pr. Kr.

Predmeti izrađeni u *Gnathia* stilu najbrojnija su keramička vrsta (dvadeset posuda) među pronađenim predmetima, a zastupljene su primjercima s glatkom i rebrastom površinom (vidi tablicu).

Posude su dobro očuvane, uz iznimku pelike i skifosa br. 9, 15 i 19, koji su u većoj mjeri uništeni. Nedostatci koji se javljaju uglavnom se ogledaju u nepostojanosti boje kojom su premazivane i ukrašavane.

Jednako kao kod gornjojadranskog, i kod *Gnathia* stila Issa je mjesto s daleko najvećim brojem pronađenih posuda u Hrvatskoj. Razlog tomu je ponajprije okolnost što do sada još nisu pronađene nekropole drugih grčkih gradova, u prvom redu Fara. Taj keramički stil karakterističan je za zapadnu isejsku nekropolu, jer gotovo da i nisu pronađene helenističke grobnice koje nisu imale prilog s *Gnathia* keramikom.²¹ Početak proizvodnje tog keramičkog posuđa započeo je sredinom 4. st. pr. Kr., a prema tradicionalnim podjelama dijeli se u tri faze, završavajući u prvoj četvrtini 3. st. pr. Kr.

exception of a jug with a wide flat opening and a lekane, all of those so far found are oinochoes.¹⁶ So far the only reliable archaeological contexts in the territory of Issa that can aid in the dating of this oinochoe are the graves found in 1930,¹⁷ and graves 65a and 90 discovered in the eastern Issa necropolis. Similar oinochoes were found in it, and they were dated to the late fourth century BC.¹⁸

This ceramic style developed in the pottery workshops of the Northern Adriatic cities, Spina and Adria, and the peak of production was achieved at the end of the fourth century and the first half of the third century BC.¹⁹ In general it is believed that the first pottery workshop making this type of pottery began operating in Spina at the end of the fourth century BC, followed by the workshop in Adria in the early third century BC.²⁰ The oinochoe found at the nursery was probably produced in Spina and it was imported to Issa, and it thus testifies to the ties between Issa and the Northern Adriatic cities at the end of the fourth century BC.

Gnathian ware items are the most numerous ceramic type (twenty vessels) among the items found, and they are present with smooth and ribbed surface (see Table).

The vessels are well-preserved, with the exception of pelikai and skyphoi no. 9, 15 and 19, which were largely devastated. Here the defects largely entail a lack of the paint with which they were coated and decorated.

As in the case of Upper Adriatic ware, in the case of Gnathian ware Issa is the site at which the largest number of such vessels were found in Croatia. This is primarily because the necropolises of other Greek cities, principally Pharos, have not yet been found. This ceramic style is characteristic of the western Issa necropolis, for there are almost no Hellenistic graves in which Gnathian ware accessories were not found.²¹ The commencement of production of this ceramic vessel type began in the mid-fourth century BC, and based on traditional divisions it is classified into three phases, ending in the first quarter of the third century BC.

16 Za vrč: Kirigin 1997, str. 133, sl. 2, str. 135; za lekanu: Kirigin, Marin 1985a, str. 47, T. VIII, 2/4; Kirigin 1992, str. 84.

17 Grob je pronađen na prostoru Isse 1930. g.; točno mjesto nalaza je nepoznato, no to je po svoj prilici bilo Martvilo, gdje je u to vrijeme otkriven veći broj grobova, što je razvidno iz korespondencije Lučić-Rokija i Abramića. Grob nikada nije integralno objavljen, već su objavljivani pojedini predmeti nađeni u njemu. Zanimljivo je da u ovom grobu, sudeći prema knjizi inventara splitskog Arheološkog muzeja, nije pronađena nijedna posuda *Gnathia* stila, što je, koliko mi je poznato, uz grob 21, istražen 1980. g. (Kirigin, Marin 1985a, str. 46, sl. 3), drugi takav slučaj među helenističkim grobovima na zapadnoj isejskoj nekropoli. Grobnica će uskoro biti cjelovito objavljena, a na temelju uvida u predmete može se datirati u zadnju trećinu 4. st. pr. Kr.

18 Kirigin 1992, str. 84.

19 O ovom tipu keramike kod nas: Kirigin 1992, str. 79-86; Kirigin 1996, str. 134; Kirigin 2004, str. 156-158; Čargo 2007, str. 14-19.

20 Kirigin 1992, str. 81, 83.

21 Vidi bilješku 17.

16 On the jug, Kirigin 1997, p. 133, Fig. 2, p. 135; for the lekane, Kirigin, Marin 1985a, p. 47, P. VIII, 2/4; Kirigin 1992, p. 84.

17 This grave was found in the area of Issa in 1930; the actual find site is not known, but it was most likely at Martvilo, where a number of graves were found at that time, which is reflected in the correspondence between Lučić-Roki and Abramić. The grave was never integrally published, rather individual items from it were published. It is interesting that in this grave, judging by the inventory log of the Archaeological Museum in Split, not one Gnathian ware vessel was found, and this, to the best of my knowledge, was researched together with grave 21, in 1980 (Kirigin, Marin 1985a, p. 46, Fig. 3), the other such case among Hellenistic graves in the western Issa necropolis. The grave itself will soon be comprehensively published, and based on an examination of the items it can be dated to the final third of the fourth century BC.

18 Kirigin 1992, p. 84.

19 On this type of pottery in Croatia, see: Kirigin 1992, pp. 79-86; Kirigin 1996, p. 134; Kirigin 2004, p. 156-158; Čargo 2007, p. 14-19.

20 Kirigin 1992, pp. 81, 83.

21 See note 17.

Na temelju novijih istraživanja, međutim, mnogi autori u svojim raspravama predlažu reviziju tradicionalne kronološke podijele *Gnathia* stila, pa njezine donje granice proizvodnje spuštaju u 2., čak i u 1. st. pr. Kr., kako to predlaže Kirigin na primjeru Isse.²² Ta keramika pronađena u Issi, iako najbrojnija, još nije dovoljno proučena, i još uvijek nije moguće sa sigurnošću odvojiti uvezene oblike od onih lokalno izrađenih. Stoga su izrazi poput 'vjerojatno' i 'moguće' česti pri određivanju provenijencije posuda ove stilske skupine kad su u pitanju isejski nalazi.

Sve crnopremazane oinochoe glatke površine izraženog su trbuha, širokog i kratkog vrata te trolisne usne - Beazley, oblik 3 (*chous*). Oinochoa br. 2 ukrašena je ukrašom *dotted-spray*, a središnje linije završavaju kružićem i bršljanovom grančicom ispod njega, s listovima između kojih su plodovi. Sličan ukras bršljanove grančice ima i oinochoe br. 6, no iznimno je loše očuvan.

Ukrašavanje posuda bršljanovom grančicom prisutno je u svim stilovima *Gnathia* keramike, dok se *dotted-spray* javlja na vazama srednjeg *Gnathia* stila, no proteže se i u kasni *Gnathia* stil.²³ Oinochoa br. 3. ukrašena je slično kao br. 2, no ukras više podsjeća na *yellow-spray with branches* negoli na *dotted-spray*. Ti ukrasi uklapaju se u skupinu kasne *Gnathie* F.²⁴ Najbliže analogije su iz Isse, gdje je na Martvilu u grobnici 3 pronađena posuda jednaka po obliku i ukrasu grančica ispod vrata posude.²⁵ Slično ukrašene oinochoe, no ne tako bliske, pronađene su u južnoj Italiji.²⁶ Druge dvije oinochoe s glatkom površinom, br. 4 i 5, ukrašene su motivom vinove loze s grozdovima i viticama koji izlaze iz crveno-smeđe deblje linije što ide oko cijele posude. Taj ukras se javlja u ranom *Gnathia* stilu i veoma je čest u svim stilovima ukrašavanja *Gnathia* keramike.²⁷ Ukras je vrlo blizak onima na južnoitalskim vazama, no oinochoa br. 4 nađena kod rasadnika ima skromniji ukras, samo grozdove i vitice, dok južnoitalske uz njih imaju i prikaze listova, te bogatije ostale ukrase, kojih kod naše nema.²⁸ Nešto bogatiji ukras ima br. 5, a svodi se na riblju kost, te točkaste i valovite vodoravne linije. Oinochoa bliska njoj nađena je u Lumbardi.²⁹ Oblikom slične oinochoe pronađene u Tarantu (*Taras*), svrstane su u fazu B2, odnosno 300-272,³⁰ što bi odgovaralo i dataciji naših oinochoa.

Obje rebraste oinochoe ukrašene su prikazom ptica (golubice) i rozeta te floralnim motivima, a jedna od njih, br. 7, i apliciranom maskom vodećeg roba iz nove komedije. Ukrasi na njima izvedeni su kombinacijama crvene i bijele boje. Oblik i ukras oinochoe

However, based on newer research, many authors have proposed a revision of the traditional chronological division of Gnathian ware, so the lower boundary of its production has been moved to the second, and even first century BC, as Kirigin proposed based on the example of Issa.²² This ware found in Issa, although the most numerous, still has not been sufficiently studied, and it is still not possible to separate with certainty its imported forms with locally produced examples. Thus, terms such as 'probably' and 'possibly' are frequent when determining the provenance of vessels of this group when viewing the Issa discoveries.

All black-coated non-ribbed oenochoes have prominent bellies, wide and short necks and three-leafed mouths - Beazley, shape 3 (*chous*). Oenochoe no. 2 has dotted-spray decoration, while the central lines end with a small circle and an ivy branch beneath it, with fruit between the leaves. Oenochoe no. 6 has a similar ivy branch decoration, although its decoration is very poorly preserved.

Decoration of vessels with ivy branches appears in all Gnathian ware styles, while dotted-spray appears on vases of middle Gnathian ware, but also extends into late Gnathian ware.²³ Oenochoe no. 3 is decorated similarly to no. 2, but the decoration much more greatly recalls yellow-spray with branches than dotted-spray. These decorations correspond to the late Gnathian F group.²⁴ The closest analogies are from Issa, where a vessel identical in shape and decoration (small branches below the vessel's neck) was found at Martvilo in grave 3.²⁵ Similarly decorated oenochoes, but not as closely, were found in Southern Italy.²⁶ The decoration on the other two oenochoes with smooth surface, no. 4 and 5, depict grape vines with bunches and tendrils which stretch outside of the thicker red-brown lines which run around the entire vessel. This decoration appears in early Gnathian ware and it is very frequent in all decoration styles of Gnathian ware.²⁷ The decoration is very close to those on Southern Italic vases, but oenochoe no. 4 found at the nursery has more modest decorations, only grape bunches and tendrils, while the Southern Italic examples also have leaves, and the remaining decorations, lacking on the example examined here, are much more rich.²⁸ No. 5 has somewhat richer decorations, consisting of fishbones and dotted and wavy horizontal lines. An oenochoe akin to it was found in Lumbarda.²⁹ A similarly-shaped oenochoe was found in Taranto (*Taras*), classified in phase B2, i.e. 300-272,³⁰ which would correspond to the dating of our oenochoe.

22 Hempel 2001, str. 111; Puritani 2002, str. 379-403; Kirigin 1990a, str. 63; Kirigin 1996, str. 133; Miše 2005, str. 39-40.

23 Webster 1968, str. 20-21.

24 Webster 1968, str. 29.

25 Cambi, Kirigin, Marin 1981a, str. 69, T. X, 17.

26 Delli Ponti 1996, str. 154, br. 120.

27 Webster 1968, str. 1-33.

28 Delli Ponti 1996, str. 133, br. 76; str. 154, br. 119; za primjere iz Canose, Rossi, van der Wielen-van Omeren 1983, str. 45-46, T. XXII, XXIII; za primjere iz raznih južnoitalskih središta vidi studiju, Lanza 2005.

29 Lisičar 1950, str. 43, sl. 4.

30 Lippolis 1994, str. 245.

22 Hempel 2001, p. 111; Puritani 2002, p. 379-403; Kirigin 1990a, p. 63; Kirigin 1996, p. 133; Miše 2005, p. 39-40.

23 Webster 1968, pp. 20-21.

24 Webster 1968, p. 29.

25 Cambi, Kirigin, Marin 1981a, p. 69, P. X. 17.

26 Delli Ponti 1996, p. 154, 120.

27 Webster 1968, pp. 1-33.

28 Delli Ponti 1996, p. 133, 76; p. 154, 119; for examples from Canosa, Rossi, van der Wielen-van Omeren 1983, pp. 45-46, P. XXII, XXIII; for examples from early Southern Italic centres, see the study by Lanza 2005.

29 Lisičar 1950, p. 43, Fig. 4.

30 Lippolis 1994, p. 245.

br. 7 slični su oinohoi koja se čuva u Veneciji, a podrijetlom je s Visa ili Hvara. Autorica je povezuje sa skupinom RPR (*ribbed with palmette-rosettes*), koja je bila aktivna u Apuliji u prvoj četvrtini 3. st. pr. Kr., no glede njezinog proizvodnog podrijetla, dvoji između lokalnog isejskog, odnosno apulskog.³¹ Sudeći prema loptastom tijelu i obliku noge oinochoe iz rasadnika, kakvi su česti na posudama iz Isse, možemo pretpostavljati njezino lokalno podrijetlo. Slično vrijedi i za oinohou br. 8, koja ima vrečasti oblik tijela, a ukras su okomito postavljene grane u dvije boje te na ramenu ptica u metopi. Sudeći po ovakvoj kombinaciji ukrasa, kojima nisam pronašao izravne analogije u južnoj Italiji, vjerojatno je i ovdje riječ o lokalnom proizvodu.³²

Kao i kod oinochoa, sve pronađene pelike su iz zadnje faze *Gnathia* stila. Na pelici br. 13 također se nalazi ukras s motivom dviju ptica. Ta pelika ima profiliranu nogu i veliku lijepo profiliranu usnu. Ovakvi oblici nisu česti na Visu i ta je pelika po svoj prilici proizvod neke provincijalne radionice iz južne Italije.³³ Oblikom ista, ali manjih dimenzija i samo s linearnim ukrasom je mala pelika br. 14. Obje su iz 3. st. pr. Kr. Kod pelike br. 9, premda je dosta oštećena, može se prepoznati oblik (Morel 3671) i ukras u većoj mjeri. Slični oblici pelika nađeni u Tarantu svrstani su u fazu B2-C.³⁴ Ova je pelika uradak apulskih radionica s kraja 4. st. pr. Kr. Pelika br. 10 i 11 imaju snažno izražen trbuh, jedna je bez ukrasa, a druga, br. 11, sa slabo očuvanim ukrasom s prikazom bršljanove grančice. Uz to, ispod ručaka ima aplicirane dvije maske. Brojne paralele nalazimo u Visu i one su vjerojatni isejski proizvod 3. st. pr. Kr.³⁵

Pelika br. 12 ukrasom je srodna oinohoi br. 5, dobar je rad i jedina među pronađenim pelikama ima sačuvan poklopac. Najbliže paralele su iz Isse, datirane u 3. st. pr. Kr.³⁶ Dno posude, br. 15, pripadalo je pelici, i to sličnog oblika kao br. 9.

Kao i kod prethodnih tipova posuda i skifosi su zastupljeni u dvije inačice, s glatkom i rebrastom površinom. Svi su dobar rad i uglavnom su dobro očuvani. Skifosi br. 16 - 17 i 18 bogato su ukrašeni linearnim ukrasom i ukrasom *dotted spray*, te ukrasom u obliku nazubljene linije. Isti primjerci otkriveni su na Martvilu u nekoliko grobnica, gdje su datirani u 3. st.³⁷ Na području Apulije oblikom slične skifose nalazimo na nekropolama u Vaste - Poggiardo i Pizzinaghe, a datirani su u kraj 4. i poč. 3. st. pr. Kr.³⁸

Both ribbed oenochoes are decorated with depictions of birds (doves) and rosettes and floral motifs, and one of them, no. 7, also has an appliquéd mask of a lead slave from the New Comedy. The decorations on them are rendered in combinations of red and white. The shape of oenochoe no. 7 and the decoration rendered thereon is also similar to the oenochoe held in Venice, and it is originally from Vis or Hvar. The author links them to the RPR (ribbed with palmette-rosettes) group, which was active in Apulia in the first quarter of the third century BC, but there is some doubt as to its production site, i.e. either local in Issa or Apulian.³¹ Judging by its ball-shaped body and the shape of the feet on the oenochoe from the nursery, frequent on vessels from Issa, its origin can be assumed to be local. A similar conclusion holds for oenochoe no. 8, which has a sack-shaped body, and its decoration consists of vertically placed branches in two colours and a bird in a metope on the shoulder. Based on this combination of decorations, for which I have found no analogies in Southern Italy, this is probably a case of local production.³²

As with the oenochoes, all pelikai found are from the final phase of Gnathian ware. Pelike no. 13 also has a decoration motif containing two birds. This pelike has a fully-formed foot and a large, finely-moulded mouth. Such forms are not common on Vis and this pelike is probably the product of some provincial workshop in Southern Italy.³³ The small pelike no. 14 has the same shape, but with smaller dimensions and only a linear decoration. Both date to the third century BC. On pelike no. 9, although considerably damaged, one can recognize the shape (Morel 3671) and decoration to a greater degree. Similarly shaped pelikai were discovered in Taranto, and classified in phase B2-C.³⁴ This pelike is a product of the Apulia workshops from the end of the fourth century BC. Pelike no. 10 and 11 have notably prominent bellies, one without decoration, while the other, no. 11, has a poorly preserved decoration depicting ivy branches. Additionally, below the handles it has two appliquéd masks. Numerous parallels can be found in Vis, and they are probably Issa products of the third century BC.³⁵

Pelike no. 12, in terms of decoration akin to oenochoe no. 5, is finely rendered and alone among the pelikai found with a preserved lid. The closest parallels are from Issa, dated to the third century BC.³⁶ The vessel bottom, no. 15, belonged to the same pelike, and its shape is similar to that of no. 9.

Like the preceding vessel types, the skyphoi are also present in two variants, with smooth and ribbed surfaces. All are finely worked pieces and generally well-preserved. Skyphoi no. 16-17 and

31 Valicelli 2006, str. 254; O grupi RPR, Green 1971, str. 37-38. Oinochoe sličnog ukrasa nalazimo u Rochavecchiji, Bernardini 1961, str. 20, br. 2, T. 43. 2.

32 Kirigin 1996, str. 132.

33 Kirigin 1996, str. 131. Kod ove pelike javlja se nejasnoća glede mjesta njezina nalaska, vidi bilj. 14.

34 Morel 1981, str. 279, Pl. 110; Lippolis 1994, str. 263.

35 Abramić 1949, T. II; Kirigin 1985, str. 95, T. III. 4; Kirigin, Marin 1985a, str. 47-48, T. VIII. 3.

36 Cambi, Kirigin, Marin 1981a, str. 69, T. X. 14.

37 Cambi, Kirigin, Marin 1981a, str. 69, T. X. 26; Kirigin, Marin 1985a, str. 47, T. VIII. 1; str. 49, T. IX. 9, 11, 16.

38 Delli Ponti 1996, str. 157, br. 129; Lamboley 1996, str. 417, sl. 45, str. 418, br. 3.

31 Valicelli 2006, p. 254; On the RPR group, see Green 1971, pp. 37-38.

Oenochoes with similar decorations can be found in Rochavecchia, Bernardini 1961, p. 20, 2, P. 43, 2.

32 Kirigin 1996, p. 132.

33 Kirigin 1996, p. 131. Uncertainty as to the discovery site of this pelike have emerged, see note 14.

34 Morel 1981, p. 279, P. 110; Lippolis 1994, p. 263.

35 Abramić 1949, P. II; Kirigin 1985, p. 95, P. III, Fig. 4; Kirigin, Marin 1985a, pp. 47-48, P. VIII, 3.

36 Cambi, Kirigin, Marin 1981a, p. 69, P. X, 14.

Bogati ukras koji se javlja na vanjskoj stijenci skifosa te oblik tijela i noge upućuju na zaključak da je izrađen u lončarskim radionicama Apulije te da je kao uvoz došao u Issu u prvoj polovini 3. st. pr. Kr. Istoj skupini pripada i većim dijelom uništena skifos, br. 19.

Skifosi br. 20 i 21 su, za razliku od prethodnih, rebrasti, a ukrasi se svode na ravne i nazubljene linije. Imaju brojne paralele u Issi, na Hvaru, pa čak i u unutrašnjosti Ilirika.³⁹ Analogije im nalazimo i u Apuliji, a slični pronađeni na nekropoli Taranta stavljeni su u fazu B 1 (325.-300. pr. Kr.).⁴⁰ Autori dvoje o njihovu podrijetlu;⁴¹ za br. 20 vjerojatnije je apulsko negoli lokalno podrijetlo, dok izgled noge kod br. 21 upućuje na zaključak da bi mogao biti proizvod lokalnih radionica. Oba primjerka iz rasadnika su iz prve polovice 3. st. pr. Kr.

Od početka 4. st. pr. Kr. keramičke radionice na prostoru Velike Grčke započinju s ukrašavanjem posuda crnim premazom. To je tzv. kampanska keramika. Posebno su bile zapažene lončarske radionice u Tarantu i Metapontu, a glavna značajka ovih posuda je sjajni crni premaz, gotovo metalnog izgleda.⁴² Neki od tih proizvoda trgovinom su dospjeli u Issu, a dio njih možemo prepoznati među posudama iz grobova kod rasadnika palmi. Pojedine posude karakterističan crni premaz intezivnog sjaja, pa je moguće da se radi o imitacijama crnog premaza, koji je u slučaju naših posuda zagasitiji.⁴³ Naravno, ostaje i mogućnost da je zagasit, matiran, izgled površine posljedica kemijsko-fizičkih oštećenja nastalih tijekom dugog vremenskog razdoblja.

Crnpremazani skifosi br. 22 i 23 su oštećeni, imaju usku nogu koja se prema tijelu vitko uzdiže, a zatim se recipijent naglo širi, tako da posuda dobiva S-profil. Pripadaju antičkom tipu skifosa, oba odlikuje kvalitetan crni premaz metalnog sjaja i južnoitalski su proizvod s kraja 4. st. pr. Kr. U Dalmaciji su slični primjerci nađeni na Visu, Hvaru, Braču, u okolici Narone i drugdje.⁴⁴

Preostala dva skifosa, br. 24 i 25, u cijelosti su ili djelomično izgubili premaz. Kvaliteta crnog premaza na njima nije ni blizu onomu koji je sačuvan na prije spomenutima. Ovakvi skifosi pronađeni su na Martvilu, prigodom istraživanja sedamdesetih godina prošlog stoljeća, i u Lombardi na Korčuli, gdje se radi o izravnim analogijama, dok na prostoru Velike Grčke takve izravne analogije ne nalazimo.⁴⁵ Oblik noge kakav vidimo na njima

18 are richly decorated with linear and dotted spray decorations, and a tooth-line decoration. The same examples were discovered at Martvilo in several graves, where they were dated to the third century.³⁷ In the territory of Apulia, similarly-shaped skyphoi were found at the necropolises in Vaste-Poggiardo and Pizzinaghe, dated to the late fourth and early third centuries BC.³⁸ The rich decorations which appear on the external walls of the skyphoi and the shape of the body and foot lead to the conclusion that they were produced in the pottery workshops of Apulia and that they arrived in Issa as imports in the first half of the third century BC. The largely destroyed skyphos, no. 19, belongs to the same group.

Skyphoi no. 20 and 21 are, as opposed to the preceding examples, ribbed, and their decorations consist of straight and toothed lines. They have numerous parallels in Issa, on the island of Hvar, and even in the interior of Illyricum.³⁹ Analogies to them can be found in Apulia, and similar examples were found at the necropolis in Taranto, classified in phase B 1 (325-300 BC).⁴⁰ Authors are divided over their origin;⁴¹ no. 20 is more likely of Apulia rather than local origin, while the appearance of the foot on no. 21 indicate the conclusion that it may be the product of local workshops. Both examples from the nurseries are from the first half of the third century BC.

From the beginning of the fourth century BC, the ceramic workshops in the territory of Magna Graecia began decorating vessels with black gloss, so-called Campanian pottery. The pottery workshops in Taranto and Metaponto were particularly notable, and the principal feature of these vessels was the shiny black gloss, with an almost metallic appearance.⁴² Some of these products made their way to Issa through trade, and some can be discerned among the vessels from the graves at the palm nursery. Individual vessels do not have the characteristically intense black shine, so it is possible that these are imitations of black gloss, which in the case of these vessels has a muted shine.⁴³ To be sure, the possibility remains that the muted, matted appearance of the surface is a result of chemical and physical damage incurred over a long period.

Black-gloss skyphoi no. 22 and 23 are damaged, have a narrow foot that narrowly rise toward the body, while the recipients expand sharply, so that the vessels have S-profiles. These are Attic skyphoi, both characterized by a quality black gloss with metallic shine. They are Southern Italic products of the late fourth century BC. In Dalmatia, similar examples were found on the islands of Vis, Hvar and Brač, and

39 Cambi, Kirigin, Marin 1981a, str. 69, T. X. 33, 18, 12; Vallicelli 2006, str. 256, sl. 7; Jeličić-Radonić, Rutar Plančić 1995, str. 75, br. 39, str. 105, br. 71, 71a; Parović-Pešikan 1986, str. 44-45, T. II, 1, 3, 4.

40 Lippolis 1994, str. 250, sl. 185, faza B 1.

41 Vallicelli 2006, str. 256.

42 Pregled o nazivlju, te načinu dobivanja sjajnog crnog premaza i osnovnoj literaturi za ovu vrstu keramike vidi, Miše 2005, str. 29-30.

43 Prag 1992, str. 68.

44 Marović, Nikolanci 1977, str. 32-33, T. X. 1, 2; Marović 1980, str. 52, str. 53, br. 1; Cambi, Kirigin, Marin 1981a, 69, T. XI. 25; Jeličić-Radonić, Rutar Plančić 1995, str. 69, br. 28; str. 82, br. 44; Kirigin, Hayes, Leach 2002, str. 249, T. IV. E 1; Miše 2005, str. 31, str. 36, sl. 9.

45 Cambi, Kirigin, Marin 1981a, str. 69, T. XI. 3, 16, 32; Kirigin 1990a, str. 59-60; Lisičar 1950, str. 43, sl. 4.

37 Cambi, Kirigin, Marin 1981a, p. 69, P. X, 26; Kirigin, Marin 1985a, p. 47, P. VIII, 1; p. 49, P. IX, 9, 11, 16.

38 Delli Ponti 1996, p. 157, 129; Lamboley 1996, p. 417, Fig. 45, p. 418, 3.

39 Cambi, Kirigin, Marin 1981a, p. 69, P. X, 33, 18, 12; Vallicelli 2006, p. 256, Fig. 7; Jeličić-Radonić, Rutar Plančić 1995, p. 75, 39, p. 105, 71, 71a; Parović-Pešikan 1986, pp. 44-45, P. II, 1, 3, 4.

40 Lippolis 1994, p. 250, Fig. 185, phase B 1.

41 Vallicelli 2006, p. 256.

42 For an overview of the terms and methods to obtain the black gloss and the basic literature on this pottery type, see: Miše 2005, pp. 29-30.

43 Prag 1992, p. 68.

karakterističan je upravo za isejske oblike crnopremazanih posuda rađenih od sive gline.⁴⁶ Isejski su proizvod 3. st. pr. Kr.

Prilog u jednom od grobova bio je i crnopremazani mali vrč s kosim lijevkom, br. 26; vrčić sličan ovom pronađen je u Visu u grobu otkrivenom 1930. godine. Dobar je rad i dobro je očuvan, osim što je premaz manjim dijelom nestao. Unutar njega na prijelazu iz vrata u trbuh nalazi se sito, a unutar trbuha je malena kuglica. Velik broj takvih vrčića pronađen je u nekropolama Velike Grčke, u Herakleji Lukanskoj, Metapontu i Tarantu, ali i u drugim mjestima, gdje su izrađene i njihove tipologije.⁴⁷

Ovakvi vrčići mogli su služiti kao posude za piće ili manje posude za ulje. Pojedini primjerci pronađeni u Grčkoj na sebi imaju otiske zubâ, pa su opredijeljeni kao posude za piće za djecu i invalide.⁴⁸ Vrčić iz rasadnika uvoz je iz južne Italije s početka 3. st. pr. Kr.

Unguentarij br. 27 također pripada ovoj skupini posuda, no njegov premaz nije tako kvalitetan. I ovdje je nejasno radi li se o imitacijama kvalitetnijih južnoitalskih radionica ili o kemijsko-fizičkim oštećenjima koja su uzrokovala gubitak sjaja. Na temelju tipološke srodnosti može se datirati u 3. st. pr. Kr.

Posude koje svrstavamo u skupinu ostale, odnosno obične fine keramike (*plain ware*), izrađene su od gline oker boje, karakterizira ih jednostavni slikani dekor ili pak nedostatak ukrasa, a ovdje su zastupljene piksidama⁴⁹ i unguentarijima. Od pet sačuvanih piksida jedna je sa sačuvanim poklopcem, br. 30. Tri su blago zaobljenog tijela, dva s nešto naglašenijim ramenom, br. 28 i 29, i prstenastog dna. Ono što je svima zajedničko, jest iznimna kvaliteta izrade, gline od koje su izrađeni i dekoracija, u obliku debljih i tanjih vodoravnih linija. Radi se o većim primjercima piksida, čije su najbliže paralele u samoj Issi, iako ne pretjerano brojne (grobnica 3, istražena 1976., i 24, istražena 1980.); ti primjerci su datirani u 3. st. pr. Kr.⁵⁰

Proizvodnja piksida u Issi razvila se u 3. st. i posebno tijekom 2. st. pr. Kr., no ti kasniji primjerci su, za razliku od primjeraka iz rasadnika, znatno manjih dimenzija, te ne mogu poslužiti kao izravna komparacija.⁵¹ Primjerci iz rasadnika vjerojatno su lokalni proizvod prve polovice 3. st. pr. Kr.

Unguentariji su jedan od najčešćih i najbrojnijih predmeta koji se nalaze u isejskim grobovima.⁵² Njihov broj upisan u knjige inventara splitskog Arheološkog muzeja, u odnosu na druge posude, to apsolutno dokazuje, no u grobove kod rasadnika bila

in the vicinity of Narona and elsewhere on the mainland.⁴⁴

The remaining two skyphoi, no. 24 and 25, have entirely or partially lost their gloss. The quality of the black gloss is nowhere near that preserved on the preceding two examples. Such skyphoi were found at Martvilo during research in the 1970s, and also in Lumbarda on the island of Korčula, which is a case of direct analogies, while such direct analogies are lacking in the territory Magna Graecia.⁴⁵ The shape of the foot that can be seen on them is characteristic precisely of the Issa shapes of black gloss vessels made of grey clay.⁴⁶ The Issa examples are a product of the third century BC.

An accessory in one of the graves was a small jug with a slanted spout, no. 26; a juglet similar to this one was found in Vis in a grave discovered in 1930. It is a good piece and well-preserved, except that a small part of the coating has worn away. Within it at the transition from the neck to the belly there is a strainer, and there is a small ball in the belly. A large number of such juglets were found in the necropolises of Magna Graecia, in Lucanian Herakleia, Metaponto and Taranto, but also at other sites, where their typologies were discerned.⁴⁷

Such juglets may have served as drinking vessels or small oil vessels. Individual examples found in Greece have tooth marks on them, so they have been classified as drinking vessels for children and the disabled.⁴⁸ The juglet from the nursery is an import from Southern Italy at the beginning of the third century BC.

Unguentarium no. 27 also belongs to this group of vessels, but its coating is not of the same quality. Here as well it is uncertain as to whether this is an imitation of higher quality Southern Italic workshops or chemical and physical damages which caused the loss of the shine. Based on typological similarities it can be dated to the third century BC.

The vessels classified in the 'other' category, i.e. standard plain ware, are made of ochre clay, characterized by simple painted decor or even a lack of decoration, and here they are among the pyxides⁴⁹ and unguentaria. Of the five preserved pyxides, the lid of only one has been preserved, no. 30. Three have gently rounded bodies, two with more prominent shoulders, no. 28 and 29, and ring-shaped bottoms. What all of them have in common is exceptionally high-quality work of the clay from which the decorations were also made in the form of thick and thin horizontal lines. These are large examples of pyxides, whose

46 Čargo 2007, str. 38, br. 4-6.

47 Pianu 1990, T. 17, T. 20, T. 23 i dr; Lippolis 1994, str. 265, str. 270; Elliott 1998, str. 654; Hempel 2001, str. 136, str. 237, T. 6; Morel 1981, str. 388-389, Pl. 191.

48 Elliott 1998, str. 654.

49 Vidi bilješku 12.

50 Cambi, Kirigin, Marin, 1981a, str. 69, T. XI, 5, 11, 20; Kirigin, Marin 1985a, str. 49, T. IX, 4/2, 2/8; Kirigin 1985, str. 95, 107, T. III, 4.

51 Kirigin 1996, str. 139. Isejske pikside usporedi s onima iz Taranta, Hempel 2001, str. 243, 252, 253.

52 Vidi statistiku, Kirigin 1990b, str. 306.

44 Marović, Nikolanci 1977, pp. 32-33, P. X, 1, 2; Marović 1980, p. 52, p. 53, 1; Cambi, Kirigin, Marin 1981a, 69, P. XI, 25; Jeličić-Radonić, Rutar Plančić 1995, p. 69, 28; p. 82, 44; Kirigin, Hayes, Leach 2002, p. 249, P. IV, E 1; Miše 2005, p. 31, p. 36, Fig. 9.

45 Cambi, Kirigin, Marin 1981a, p. 69, P. XI, 3, 16, 32; Kirigin 1990a, pp. 59-60; Lisičar 1950, p. 43, Fig. 4.

46 Čargo 2007, p. 38, no. 4-6.

47 Pianu 1990, P. 17, P. 20, P. 23 and *passim*; Lippolis 1994, p. 265, 270; Elliott 1998, p. 654; Hempel 2001, p. 136, 237, P. 6; Morel 1981, pp. 388-389, P. 191.

48 Elliott 1998, p. 654.

49 See note 12.

su položena samo tri. Dva unguentarija iz ove skupine - jedan je sačuvan u cijelosti, br. 34, dok je od drugog sačuvan samo donji dio, br. 35 - kvalitetno su izrađeni i nemaju na sebi ukrase, dok je br. 35 iznutra premazan smeđim premazom; rad su 3. st. pr. Kr.

Među predmetima iz grobova kod rasadnika koji su uvedeni u knjige inventara nalazila se i plitka posudica, koju u depou splitskog Arheološkog muzeja nisam uspio pronaći. Na temelju skice predmeta možemo pretpostaviti da se radi o maloj soljenci br. 36, koje su prilično česti nalazi na nekropolama.⁵³

Jedini nekeremički predmet bio je *dug komad željeza oksidiran i bez oblika, koji se pri dodiru odmah raspao*.⁵⁴ U dosadašnjim istraživanjima isejskih grobova od željeznih predmeta uglavnom su se nalazili strigili te pokoji nož. Oružju do sada nije bilo traga. Na temelju toga možemo pretpostaviti da je metalni predmet bio strigil, koji je zbog korodiranja puknuo i dobio izduženu formu. Njegove tanke stijenke podložne su brzom propadanju.⁵⁵ Mogućnost da se radilo o nekom oružju, manje je vjerojatna. Korodiranje strigila ostavilo je traga na oinohoi i piksidama br. 3, 29 i 31, iz čega je razvidno da su se ove posude nalazile u istom grobu (ako je u grobovima bio samo jedan strigil).

Na kraju možemo zaključiti da su prvi ukopi kod rasadnika započeli krajem 4. st. ili najkasnije na samom početku 3. st. pr. Kr., dok oni posljednji ulaze u okvire 3. st. pr. Kr.; nadalje, svi su ukopi vremenski sukladni i tipološki istovjetni s ukopima na isejskim nekropolama. Ovakvi oblici grobova nisu značajka samo Isse, poznati su diljem helenskog svijeta i jedan su od najčešćih tipova grobnica.⁵⁶

Nije moguće utvrditi točan broj pokojnika u pojedinom grobu, jer o tome nema nikakvih bilježaka, tek ona da su radnici razbili lubanje te da su kosturi u grobnicama bili čitavi, dobro sačuvani i orijentirani prema istoku.⁵⁷ Isto tako, ne možemo sa sigurnošću govoriti ni o spolu pokojnikâ. Prije je rečeno da su kosturi uništeni, te nije moguće napraviti analizu koštanih ostataka. Predmeti naizgled više ukazuju na to da bi se moglo raditi o muškim ukopima, no s takvom interpretacijom treba biti oprezan, jer nije rijetka pojava da se i uz žene polažu željezni strigili, koji su inače

closest parallels are in Issa itself, although not very numerous (graves 3, researched in 1976, and 24, researched in 1980); these examples were dated to the third century BC.⁵⁰

Production of pyxides in Issa developed in the third century and particularly during the second century BC, but these later examples were, as opposed to those from the nursery, considerably smaller, so they cannot serve for direct comparison.⁵¹ The examples from the nursery are probably local products of the third century BC.

Unguentaria are among the most frequent and numerous items from the Issa graves.⁵² Their number registered in the inventory log of the Archaeological Museum in Split in comparison to other vessels absolutely demonstrates this, but only three were placed in the graves at the nursery. Two unguentaria of this group - one is entirely preserved, no. 34, while only the lower portion of the other, no. 35, is - exhibit high-quality work and have no decorations on themselves, while no. 35 is coated with a brown gloss; they were made in the third century BC.

Among the items from the graves at the nursery registered in the inventory logs there is also a small shallow vessel, which I could not find in the storage depot of the Archaeological Museum in Split. Based on a sketch of this item, it can be assumed to have been a small salt cellar, which are quite often found in necropolises, no. 36.⁵³

The only non-ceramic item was *the long piece of rusted iron without form, which fell apart as soon as it was touched*.⁵⁴ In prior research into Issa graves, the iron items were generally strigils and the occasional knife. So far no traces of weapons have been found. Based on this, it can be assumed that the metallic item was a strigil, which acquired an elongated form because it cracked as a result of corrosion. Its thin sides were subject to rapid decay.⁵⁵ The possibility that this was some type of weapon is less likely. The corrosion from the strigil left traces on the oenochoes and pyxides no. 3, 29 and 31, thereby making it apparent that these vessels were in the same grave (if only a single strigil was in the graves).

It can be said in conclusion that the first burials at the nursery commenced at the end of the fourth century or, at the latest, the very beginning of the third century BC, while the last generally

53 Za pojedine oblike isejskih i farskih soljenki vidi, Čargo 2007, str. 49; Miše 2005, str. 37.

54 Nikolanci 1954, str. 192.

55 Primjere isejskih strigila iz grobnice 3 na Martvilu vidi Cambi, Kirigin, Marin 1981a, T. IX; Za oblike strigila nađene u grobnicama metapontske nekropole vidi, Prohászka 1998, str. 797-804; u Herakleji lukanskoj, Pianu 1990, T. XLIV, 2, TXLV, 2, TXLIX, 2, TLXV, 2, TLXXII, 3, T. LXXIII, 1; Apoloniji, Mano 1971, 195-196, T. XLVI.

56 Za grobove u obliku sanduka vidi: u Lukaniji, Metaponto vidi, Carter 1998, str. 79-89; Herakleji lukanskoj, Pianu 1990, str. 211; u Mesapiji, Vaste-Pogiardo, Delli Ponti 1996, str. 99-214; u Apuliji, Taranto, Maruggi 1994, 70, 75-77; u Tesaliji, Gorica (Gorítsa), Bakhuizen 1992, str. 292-293; u Apoloniji, Mano 1971, str. 116, sl. 12; za grobove od klesanaca, u Apuliji, Bittetto (Bari), Scattarella, De Lucia 1984, str. 178, T. LI.

57 Nikolanci 1954, str. 192.

50 Cambi, Kirigin, Marin, 1981a, p. 69, P. XI. 5, 11, 20; Kirigin, Marin 1985a, p. 49, P. IX. 4/2, 2/8; Kirigin 1985, pp. 95, 107, P. III. 4.

51 Kirigin 1996, p. 139. For a comparison of Issa pyxides with those from Taranto, Hempel 2001, pp. 243, 252, 253.

52 See statistics in Kirigin 1990b, p. 306.

53 For individual forms of Issa and Pharos salt cellars see: Čargo 2007, p. 49, Miše 2005, p. 37.

54 Nikolanci, 1952, p. 192.

55 For examples of Issa strigils from grave 3 at Martvilo, see Cambi, Kirigin, Marin 1981a, P. IX; for forms of strigils found in the graves of the Metaponto necropolis, see Prohászka 1998, pp. 797-804; in Lucanian Herakleia, Pianu 1990, P. XLIV. 2, P. XLV. 2, P. XLIX. 2, P. LXV. 2, P. LXXII. 3, P. LXXIII. 1; Apolonia, Mano 1971, 195-196, P. XLVI.

česti u grobovima muškaraca, ali i primjerice skifosi, kojih je među predmetima iz grobova kod rasadnika nađen najveći broj, a koji se također polažu uz ženske ukope.⁵⁸

Premda ne znamo koji su predmeti pripadali pojedinoj grobnici, na temelju brojnosti sačuvanih posuda s popriličnom sigurnošću možemo zaključiti da je svaki grob sadržavao oinohou, peliku, skifos i piksidu. Već prije zamijećena pojava da se u isejskim grobovima vrlo često polažu posude koje se mogu povezati uz kulturu pijenja vina (osim pikside), svjedoči da je vinogradarstvo i vino imalo istaknutu ulogu u gospodarstvu i životu zajednice, što se ogleda i u pogrebnom ritualu.⁵⁹ Ovome treba nadodati da je najčešće ime koje se javlja na isejskim stelama Dioniz, božanstvo čiju povezanost s vinom ne treba posebno naglašavati.⁶⁰

Zanimljivo je da je pronađen mali broj unguentarija, koji su inače najčešći i najbrojniji grobni prilog isejskih grobova. Doduše, jedan je manji dio predmeta iz grobova bio razbijen, odnosno otuđen, no nije vjerojatno da se to odnosi samo na unguentarije. Sličnu situaciju nalazimo i u grobnicama 14, iz 1955. godine, i 3, iz 1976., u kojima su također bila položena samo tri, odnosno dva unguentarija, a kako se i te grobnice mogu slično datirati, možemo pretpostavljati da se u rečenom razdoblju u Issi unguentariji nisu polagali u većem broju, kako će to biti slučaj poslije, posebice u 2. st. pr. Kr., kada postaju obvezatni grobni prilog. Slična se pojava zamjećuje i na nekropoli Taranta.⁶¹ Iako se to čini sasvim vjerojatnim, s konačnim zaključkom treba pričekati jer najveći dio grobnih cjelina s isejskih nekropola nije objavljen.

Jedan dio posuda najbliže analogije ima u samoj Issi, što upućuje na zaključak da su neke od njih lokalne izrade; to je i razumljivo ako se zna da u to vrijeme Issa razvija snažnu lončarsku djelatnost.⁶² Uvezene posude ukazuju na trgovačke veze Isse s područjem južne i sjeverne Italije (gornjojadranska oinohoa). Premda se o trgovačkim vezama sa sjevernom Italijom ne može zaključivati na temelju samo jedne posude, jer je ona u Issu mogla doći i posredno, prije spomenuti podatak da je na prostoru Isse pronađeno najviše posuda ovog tipa u Hrvatskoj, učvršćuje nas u zaključku da su te veze sasvim sigurno postojale. Dijelu predmeta nije moguće sa sigurnošću odrediti mjesto proizvodnje, što se u najvećoj mjeri odnosi na *Gnathia* posude. Najveći razlog tome je nedostatak proučenosti helenističke keramike u cjelini, na prostoru Isse, ali i drugih mjesta u Dalmaciji.

Ukopi kod rasadnika palmi izvršeni su, dakle, u vrijeme potpune afirmacije grada. To je vrijeme kada Issa kao grad rastućega gospodarstva započinje s penetracijom na okolni južni i srednji dio istočnojadranske obale, osnivajući svoje naseobine i svetišta, stvarajući svoju *sympoliteia*,⁶³ pa je razumljivo da je i sam

date to the third century BC; furthermore, all of these burials comply chronologically and they are typologically identical to the burials in the Issa necropolises. Graves of this form are not only a feature of Issa, for they are known throughout the Hellenistic world and they are among the most common grave types.⁵⁶

It is not possible to ascertain the exact number of deceased in individual graves, because there are no records thereof, only that the workers crushed the skulls and that the skeletons in the graves were whole, well-preserved and oriented toward the east.⁵⁷ By the same token, not even the sex of the deceased can be discussed with any certainty. As stated above, the skeletons were destroyed, and an analysis of the bone remains is not possible. At first glance, the items would seem to indicate the greater likelihood that these were male burials, but such interpretations must be made cautiously, for it was not rare that burials of women were accompanied by strigils, otherwise frequent in the graves of men, as well as examples of skyphoi, which were found in the highest number in the graves at the nursery, and which also accompanied women's burials.⁵⁸

Although it is not known which items corresponded to which grave, based on the number of preserved vessels, one can conclude with considerable certainty that each grave contained an oinochoe, pelike, skyphos, and pyxis. It has already been observed before that Issa graves often contained these vessels, which can be associated with the culture of drinking wine (except for the pyxis), testifying to the fact that viniculture and wine played a major role in the economy and life of the community, which was reflected in burial rites as well.⁵⁹ To this one should add that the most common name which appears on Issa stelae is Dionysus, the name of the god whose ties to wine need not be emphasized.⁶⁰

It is interesting that a small number of unguentaria were found, as these are otherwise the most numerous item in the Issa graves. To be sure, a smaller portion of the grave goods were broken or taken away, but it is not likely that only unguentaria involved. A similar situation can be found in graves 14, from 1955, and 3, from 1976, in which only three and two unguentaria were placed respectively, and since these graves can be similarly dated, it can be assumed that during this period in Issa unguentaria were not placed in graves in larger numbers, as would be the case later, particularly in the second century BC, when they became mandatory grave good. A similar phenomena was observed in the

58 Prohászka 1998, str. 801; Hall 1998, str. 585-586.

59 Kirigin 1985, str. 102; Kirigin 1996, str. 83-84, 95-96; Kirigin 1990b, 305-309; Kirigin, Katunarić, Šešelj 2005, str. 9-11.

60 Kirigin 1996, str. 101; Kirigin, Katunarić, Šešelj 2006, 193.

61 Hempel 2001, str. 103-104.

62 Kirigin 1990a, str. 58-65.

63 Čače, Šešelj 2005, str. 168-170.

56 For cist graves see: in Lucania, Metaponto see: Carter 1998, pp. 79-89; Lucanian Herakleia, Pianu 1990, p. 211; in Mesapia, Vaste-Pogiardo, Delli Ponti 1996, pp. 99-214; in Apulia, Taranto, Maruggi 1994, pp. 70, 75-77; in Tesalia, Gorica (Goritsa), Bakhuizen 1992, pp. 292-293; in Apolonia, Mano 1971, p. 116, Fig. 12. For graves made of carved stone, in Apulia, Bittetto (Bari), Scattarella, De Lucia 1984, p. 178, P. LI.

57 Nikolanci 1954, p. 192.

58 Prohászka 1998, p. 801; Hall 1998, pp. 585-586.

59 Kirigin 1985, p. 102; Kirigin 1996, pp. 83-84, 95-96; Kirigin 1990b, 305-309; Kirigin, Katunarić, Šešelj 2005, p. 9-11.

60 Kirigin 1996, p. 101.; Kirigin, Katunarić, Šešelj 2006, 193.

otok potpuno heleniziran i da Isejci mirno podižu gospodarstva uz plodne površine, kakvo je moglo biti i ono pretpostavljeno kod današnjeg rasadnika palmi, uz koja se i ukapaju.⁶⁴

necropolis at Taranto.⁶¹ Even though this seems entirely likely, a final conclusion must wait since given that most of the grave units from the Issa necropolises have not been published yet.

The closest analogies to some of the vessels are in Issa itself, which leads to the conclusion that some of them were locally made; this is understandable if one bears in mind that during that time very intense pottery production had developed in Issa.⁶² Imported vessels demonstrate the trade relations between Issa and Southern and Northern Italy (Upper Adriatic oenoches). Even though trade relations with Northern Italy cannot be assumed on the basis of just a single vessel, because it may have come to Issa indirectly, the aforementioned fact that the most vessels of this type in Croatia were found in Issa reinforces the conclusion that such relations certainly existed. The production site of some of these items cannot be determined with any certainty, but they are largely examples of Gnathian ware. The principal reason for this is the insufficient level of study of Hellenistic pottery as a whole in the territory of Issa and elsewhere in Dalmatia.

The burials at the palm nursery were therefore conducted during the era of the city's complete affirmation. This is a time when Issa, as a city with a flourishing economy, began to penetrate into the surrounding southern and central zones of the Eastern Adriatic, with the goal of establishing their own settlements and shrines, creating their own *sympoliteia*,⁶³ so it is understandable that the island itself was entirely Hellenized and that the natives of Issa peacefully developed their farms alongside fertile fields, next to which the burials were conducted,⁶⁴ which may have been the case at the field that was assumed to have existed at the site of today's palm nursery.

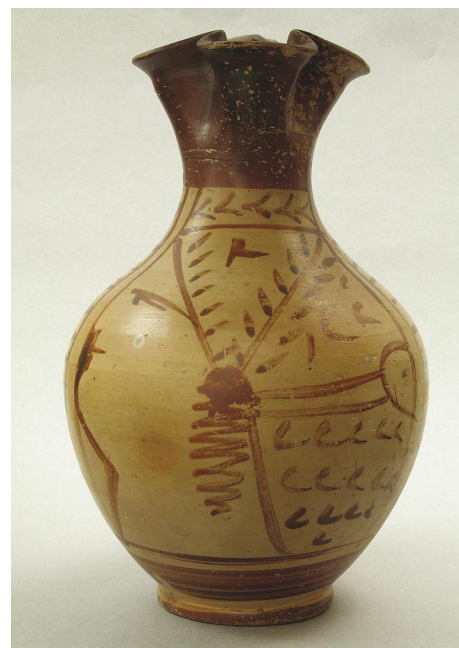
64 Nedavno provedena arheološka reambulacija otoka Visa i njegova arhipelaga pokazuje da je cijeli taj prostor heleniziran, Kirigin et alii 2006.

61 Hempel 2001, pp. 103-104.

62 Kirigin 1990a, pp. 58-65.

63 Čače, Šešelj 2005, pp. 168-170.

64 The recently conducted renewed archaeological survey of the island of Vis and its archipelago has shown that this entire area was Hellenized, Kirigin et al. 2006.

**Katalog:**

V - visina, Øu - promjer usne, Øt - promjer trbuha, Ød - promjer dna.

Redni broj predmeta u katalogu odgovara rednom broju u tablici.

Gornjojadranska keramika (Alto-Adriatico)

1. Oinohoa (οἰνοχόη), Fb 1582

V 27,3 cm; Øt 17,6 cm; Ød 7,7 cm

Sačuvana u cijelosti, s neznatnim oštećenjima po usni, izrađena od gline svjetlije oker boje. Trolisna usna, vrat, gornji dio ručke, te pojas nad nogom i rub dna premazani su crvenkastosmeđom bojom. Površina trbuha je glatka, rame posude je prilično naglašeno, a noga je niska, prstenastog oblika. Ručka završava u visini trolisne usne, ima središnje rebro.

Ukras: A. Na truhu prikaz ženske glave u profilu okrenute udesno. Glava malo podignuta, iznad nje ukras od pet koso postavljenih crtica V-oblika. Kosa je u *saccosu*, podijeljena u tri dijela, od kojih svaki ima drukčiji ukras. Ispod uha je dugi spiralni uvojak kose ili naušnica. Crte lica prikazane su shematski. Nos je malen, zakrivljen prema unutra, usta su označena kratkim potezom, obrva dužom crtom, a zjenica točkom. B. Ispod ručke nalazi se palmeta uokvirena po vanjskom rubu linijom koja time dobiva potkovičasti oblik. U prostoru između glave i palmete prostori su odijeljeni dvostrukim linijama unutar kojih se nalazi nespreno izrađena cik-cak linija koja ide do vrata, okomito položena.

Usporedbe: Oblikom i pojedinim detaljima ukrašavanja, Kirigin 1992, str. 87-95; Bonomi 1997, str. 76, 147.

Datacija: Kraj 4. st. pr. Kr.

Objava: Kirigin 1986, str. 24, br. 63; Kirigin 1992, str. 96-97; Čargo 2007, str. 9.

Catalogue:

H - height, Øm - diameter of mouth, Øbe - diameter of belly, Øbo - diameter of bottom.

The number in the catalogue corresponds to the number in the table.

Upper Adriatic (Alto-Adriatico) ware

1. Oenochoe (οἰνοχόη), Fb 1582

H 27.3 cm; Øbe 17.6 cm; Øbo 7.7 cm

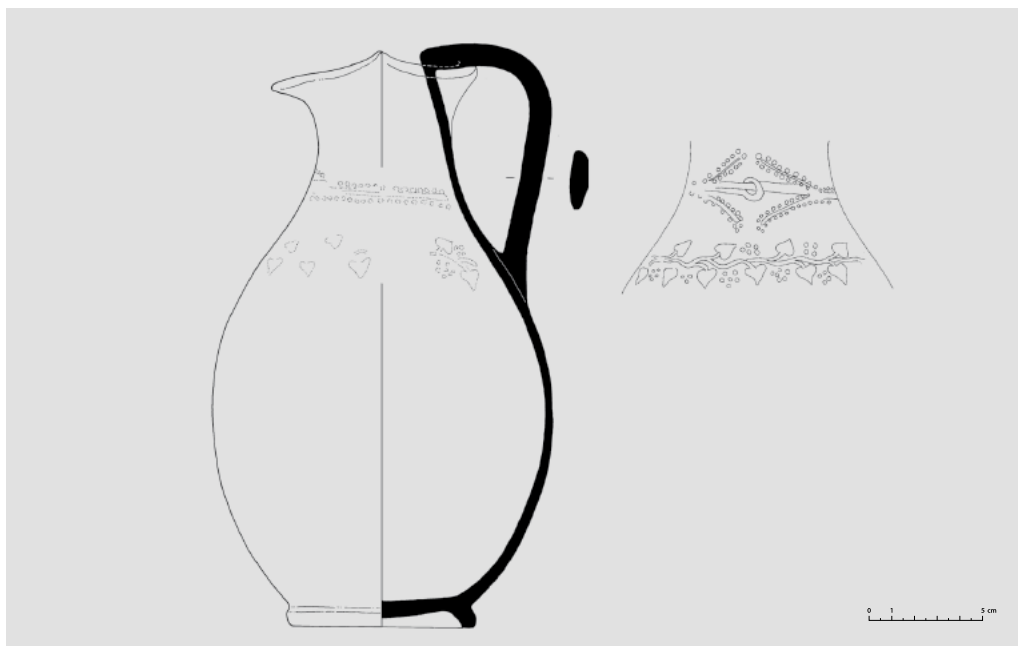
Entirely preserved, with negligible damage along the mouth, made of light ochre-coloured clay. Three-leafed mouth, neck, upper part of handle and belt above foot and edge of bottom coated with red-brown paint. Surface of belly smooth, shoulder of vessel quite prominent, foot is low and ring-shaped. Handle ends at height of three-leafed mouth, has central rib.

Decoration: A. On belly, portrayal of woman's head in profile facing right. Head slightly raised, above it a decoration consisting of five slanted V-shaped marks. Her hair is in *saccoso*, divided into three parts, of which each has a different decoration. Below the ear is a long spiral curl or earring. The lines of the face are portrayed schematically. The nose is small, curved inward, the mouth is indicated by a short line, the eyebrows by a longer line, and the iris by a dot.

B. Below the handle there is a palmette framed by a line along the external border which thus creates a horseshoe form. In the space between the head and palmette the spaces are divided by double lines within which there is a clumsily rendered zigzag line which runs to the neck, placed vertically. *Comparisons:* Shape and individual decoration details, Kirigin 1992, pp. 87-95; Bonomi 1997, p. 76, 147.

Dating: End of fourth century BC

Publication: Kirigin 1986, p. 24, no. 63; Kirigin 1992, pp. 96-97; Čargo 2007, p. 9.



Gnathia keramika

2. Oinohoa, Fb 1583

V 26 cm; Øt 15,6 cm; Ød 8,3 cm

Sačuvana u cijelosti, glina Munsell 10 YR, 8/3, crni premaz. Vrat i trolisna usna su široki, ručka je vrpčastog presjeka s izraženim rebrom po sredini. Na spoju s trolisnom usnom malo prelazi usnu i završava blagim zaobljenjem unutar prostora izljeva. Prijelaz vrata k trbuhu je blag, njegova površina je glatka, a noga niska, prstenastog oblika.

Ukras: ispod trolisnog otvora nalazi se linija s obiju strana praćena točkama. Linija ide uokolo cijele posude, a na mjestu ispod izljeva račva se u dva pravca stvarajući romboidni okvir, dok se glavne linije spajaju u kružić. Ispod njega, u razini s korijenom ručke, sa svake strane teče valovita grančica bršljana na koju se nastavljaju listići, između kojih se nalaze nemarno prikazani plodovi sa šest točkica poredanih u krug, a gdjekad i četiri ili pet točkica. Svi ukrasi su sačuvani u tamnosmeđem otisku. Zbog nedostataka boje na posudi ne znamo je li bilo još kakvih ukrasa.

Usporedbe: Cambi, Kirigin, Marin 1981a, T. X, 17; Delli Ponti 1996, str. 154, br. 120.

Datacija: Početak 3. st. pr. Kr.

Objava: Neobjavljeno.

Gnathian ware

2. Oenochoe, Fb 1583

H 26 cm; Øbe 15,6 cm; Øbo 8,3 cm

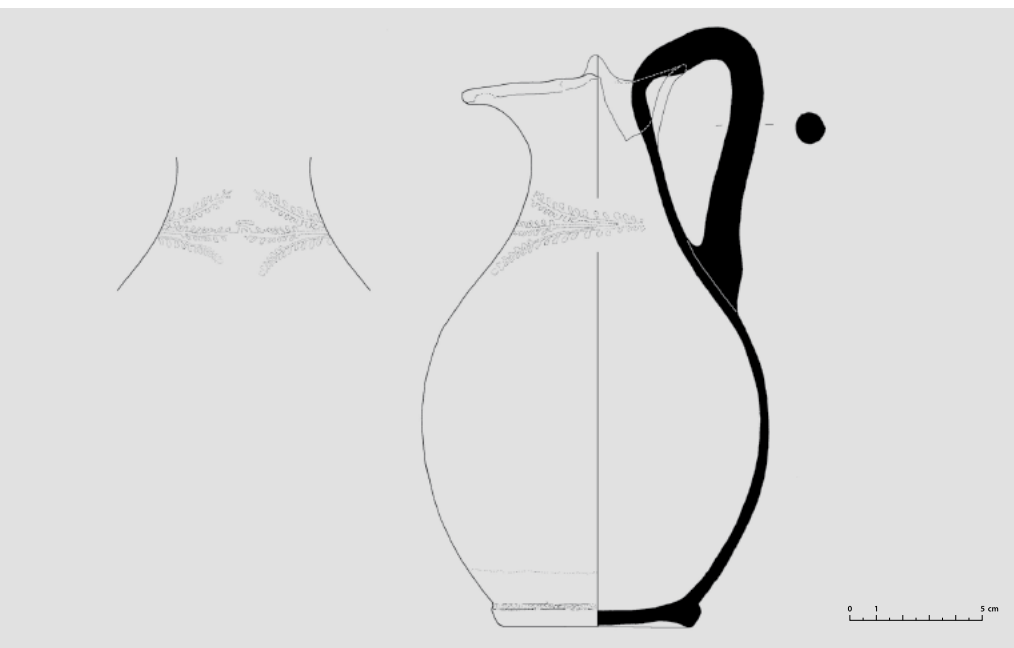
Entirely preserved, clay, Munsell 10 YR, 8/3, black coating. Neck and three-leafed mouth are wide, handle has a ribbon-shaped cross-section with prominent rib in middle. Slightly exceeds mouth at the connection with the three-leafed mouth and ends gently rounded within the spout. The transition of the neck to belly is gentle, surface is smooth, and the foot is low and ring-shaped.

Decoration: below the three-leafed opening there is a line accompanied by dots on both sides. The line encircles the entire vessel, and at places below the spout it branches in two directions, creating a rhomboid frame, while the main line connects into a small circle. Below it, at the level of the handle base, a small wavy ivy branch runs from both sides at which leaves continue, between which there are carelessly depicted fruits with six dots placed in a circle, while at places there are four or five dots. All decorations are in dark-brown impression. Due to the lack of paint on the vessel it is not known whether there were any other decorations on it.

Comparisons: Cambi, Kirigin, Marin 1981a, P. X, 17; Delli Ponti 1996, p. 154, no. 120.

Dating: Beginning of third century BC

Publication: Unpublished.



3. Oinochoa, Fb 1586

V 23 cm; Øt 13,6 cm; Ød 7,9 cm

Nedostaje dio usne, dno je oštećeno i probušeno. Glina Munsell 2,5 Y, 7/3, crni premaz, koji je prilično oštećen po površini i koji je izgubio nekadašnji sjaj. Dno je premazano zagasitom crvenosmeđom bojom. Pojas iznad njega do crno obojenog dijela nije bojan. Ručka je okruglog presjeka, a u spoju s trolisnom usnom s unutarnje strane stvara blago izraženo rebro.

Ukras: Kao kod br. 2 samo jednostavniji, a boja (bijela) je loše očuvana. Svodi se na dvije grančice koje teku od ručke, a u poziciji izljeva se račvaju tvoreći romboidan okvir. U sredini se spajaju, no nije jasno nalazi li se u središtu krug, kao kod br. 2. *Usporedbe*: Br. 2, Cambi, Kirigin, Marin, 1981a, str. 69, T. X. br. 17; sličan ukras vidi, D'Amicis 1994, str. 154, sl. 133; Delli Ponti 1996, str. 154, br. 120.

Datacija: Početak 3. st. pr. Kr.

Objava: Neobjavljeno.

3. Oenochoe, Fb 1586

H 23 cm; Øbe 13.6 cm; Øbo 7.9 cm

A part of the mouth is missing, bottom is damaged and punctured. Clay, Munsell 2,5 Y, 7/3, black coating, which is rather damaged along the surface and which has lost its former shine. Bottom is coated with muted red-brown paint. Belt above it not painted up to black portion. Handle has round cross-section, and at the connection with the three-leafed mouth on the inside it creates a gently expressed rib.

Decoration: As with no. 2 only simpler, while colour (white) is poorly preserved. Only two small branches that run from the handle, and at the spout they branch apart creating a rhomboidal frame. The central ones connect, but it is not clear whether they are in the middle of the circle, as on no. 2.

Comparisons: No. 2, Cambi, Kirigin, Marin, 1981a, p. 69, P. X. 17; for similar decoration, see: D'Amicis 1994, p. 154, Fig. 133; Delli Ponti 1996, p. 154, no. 120.

Dating: Beginning of third century BC

Publication: Unpublished.



4. Oinohoa, Fb 1584

V 25,4 cm; Øt 15,1 cm; Ød 9,1 cm

Sačuvana u cijelosti, glina Munsell 7,5 YR, 7/4, crni premaz koji je većim dijelom otpao. Noga posude kao i pojas nad njom nisu premazani. Trbuh je ovalan, ručka je vrpčastog presjeka s izraženim rebrom po sredini. Na spoju s trolisnom usnom završava šiljkom. Trolisna usna i vrat su široki, a prijelaz k trбуhu je blag. Površina trбуha je glatka, a noga niska, prstenastog oblika.

Ukras: na ramenu posude, u razini s korijenom ručke, s obje strane ručke teče crvenosmeđa linija uokolo posude. Iz linije s obje strane izlazi loza s viticama i shematski prikazanim grožđem.

Usporedbe: Bernardini 1961, str. 18, T. 38. br. 2, 3; Delli Ponti 1996, str. 133, br. 76.

Datacija: Početak 3. st. pr. Kr.

Objava: Neobjavljeno.

4. Oenochoe, Fb 1584

H 25,4 cm; Øbe 15,1 cm; Øbo 9,1 cm

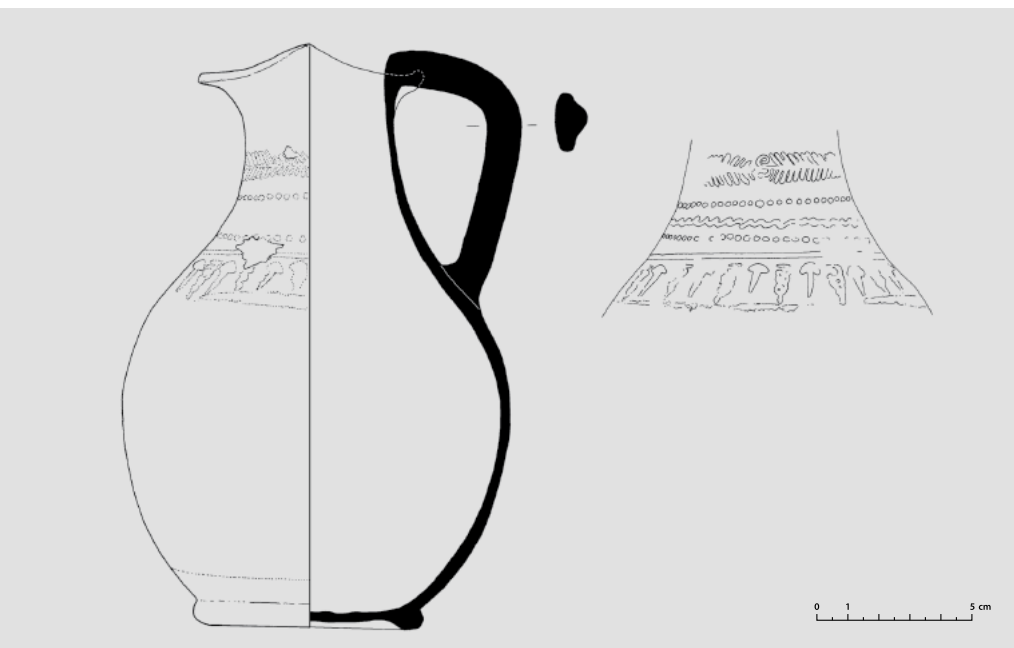
Entirely preserved, Clay, Munsell 7,5 YR, 7/4, black coating which has mostly fallen off. Foot of vessel as well as belt above it not glossed. Belly is oval, handle has ribbon-shaped cross-section with prominent rib down the middle. Ends in point at connected with three-leafed mouth. Three-leafed mouth and neck are wide, and transition to belly is gentle. Surface of belly is smooth, and the foot is low and ring-shaped.

Decoration: at the shoulder of the vessel, at the level of the handle base, on both sides of the handle a red-brown line runs all around the vessel. A vine with tendrils extends out of both sides of the line together with schematically portrayed grapes.

Comparisons: Bernardini 1961, p. 18, P. 38. 2,3; Delli Ponti 1996, p. 133, no. 76.

Dating: Beginning of third century BC

Publication: Unpublished.



5. Oinochoa, Fb 1587

V 18,9 cm; Øt 12,9 cm; Ød 7,5 cm

Sačuvana u cijelosti, glina Munsell 10 YR, 7/3, crni premaz koji je dobrim dijelom otpao. Oblik kao br. 2, malo trbušastija.

Ukras: Na vratu ispod trolisne usne sa svake strane riblja kost koja se u srednjem dijelu spaja; mjesto spoja je oštećeno. Ispod su točke i valovita linija, sve u bijeloj boji. Slijedi pojas uokviren bijelim linijama. U pojasu ukras shematski prikazane vitice vinove loze i grožđa.

Usporedbe: Lisičar 1950, str. 43, sl. 4; oblikom Kirigin, Marin 1985a, str. 48, T. VIII. 5; str. 50, T. IX. 1. Lanza 2005, str. 39; slične oblikom u Tarantu svrstane su u fazu B2, Lippolis 1994, str. 245.

Datacija: Početak 3. st. pr. Kr.

Objava: Neobjavljeno.

5. Oenochoe, Fb 1587

H 18.9 cm; Øbe 12.9 cm; Øbo 7.5 cm

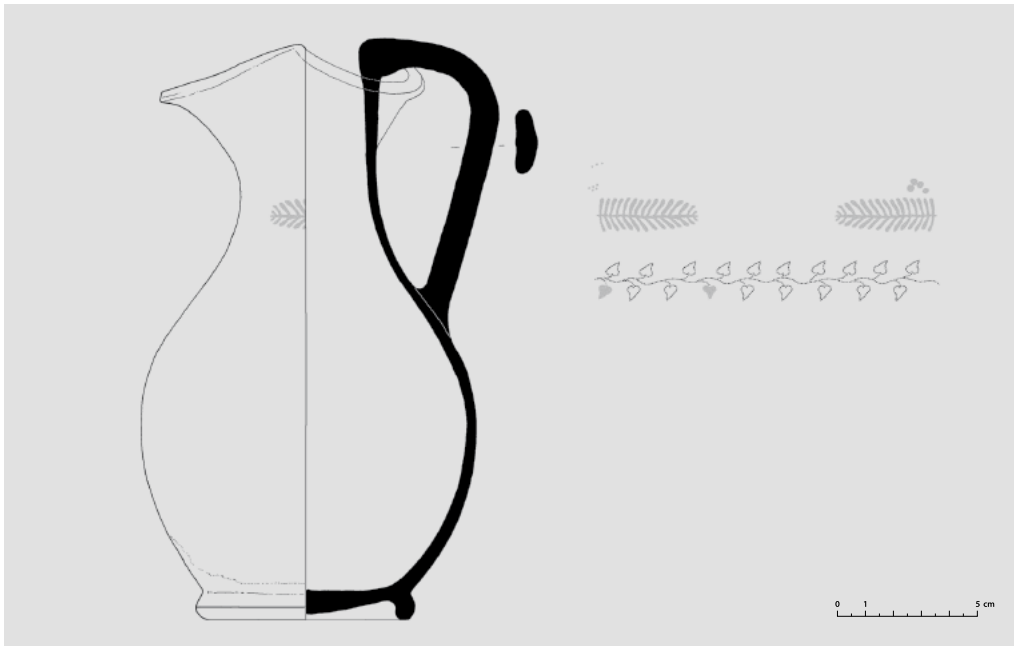
Entirely preserved, clay, Munsell 10 YR, 7/3, black coating which has largely fallen off. Shape like no. 2, slightly more belly-like.

Decoration: Fishbone at neck below three-leafed mouth on each side which connects in middle portion; connection point damaged. Below are dots and wavy lines, all white. Followed by belt framed with white lines. Grape vine tendrils and grapes depicted as decorations in the belt.

Comparisons: Lisičar 1950, p. 43, Fig. 4; shape: Kirigin, Marin 1985a, p. 48, P. VIII. 5; p. 50, P. IX. 1. Lanza 2005, p. 39; similar shape in Taranto classified in phase B2, Lippolis 1994, p. 245.

Dating: Beginning of third century BC

Publication: Unpublished.



6. Oinochoa, Fb 1615

V 20,8 cm; Øt 12,4 cm; Ød 7,9 cm

Sačuvana u cijelosti, glina Munsell 7,5 YR, 7/6, crni premaz sa smeđim tonovima, dno i pojas iznad njega nisu obojani. Manja oštećenja po površini premaza. Oblik kao br. 4.

Ukras: Ispod trolisne usne na vratu nazire se slabo očuvana bršljanova grančica kao na br. 2.

Usporedbe: oblikom Kirigin, Marin 1981a, str. 47, T. VIII. br. 5.

Datacija: Početak 3. st. pr. Kr.

Objava: Neobjavljeno.

6. Oenochoe, Fb 1615

H 20.8 cm; Øbe 12.4 cm; Øbo 7.9 cm

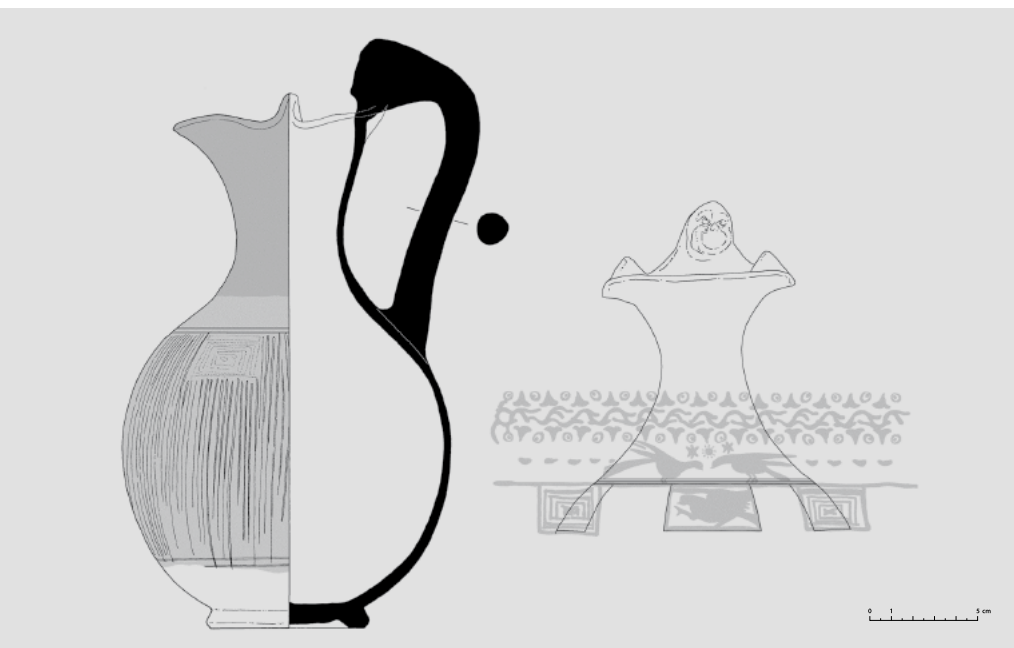
Entirely preserved, clay, Munsell 7.5 YR clay, 7/6, black coating with brown tones, bottom and belt above it not painted. Minor damage on surface of gloss. Shape like no. 4.

Decoration: Below three-leafed mouth on neck poorly preserved ivy branches like on no. 2 visible.

Comparisons: shape - Kirigin, Marin 1981a, p. 47, P. VIII. 5.

Dating: Beginning of third century BC

Publication: Unpublished.



7. Oinochoa, Fb 1585

V 27 cm; Øt 15,4 cm; Ød 7,5 cm

Potpuno očuvana, glina Munsell 7,5 YR, 6/4, vrat, unutrašnjost trolisne usne i ručka premazani tamnosmeđom bojom, korijen ručke i tijelo su smeđenarančasti, a pojas neposredno iznad noge nije obojan. Ručka je kružnog presjeka, izlazi malo iznad usne, gdje je aplicirana maska. U gornjem dijelu je šira negoli pri korijenu. Vrat je vitak, a prijelaz k trbuhu je naglašen. Trbuh je rebrast, na ramenu su tri glatka pravokutna polja. Rebrasti dio je s obje strane uokviren dvjema plitko urezanim linijama. U donjem njegovom dijelu na desnoj strani nalazi se tamni smeđi krug nastao pri dodirivanju dviju posuda u pečenju. Noga je niska i prstenastog oblika.

Ukras: Na ramenu ispod tamnosmeđeg pojasa je valovita grančica bršljana koja ide uokolo cijele posude. Iz nje izlaze listovi i cvjetovi (bijelo). Ispod toga, u razini s izljevom, nalaze se dvije ptice okrenute jedna prema drugoj. Iznad i ispod njihovih glava nalaze se dva kružića u obliku sunca te jedno ispod glava (bijelo). Svi ukrasi su sačuvani samo u negativu. Slijedi rebrasti dio s tri glatka pravokutna polja; u dva krajnja bijelom je bojom izveden ukras kvadratne spirale, a u središnjem je ptica okrenuta ulijevo. Ukrasi su blijedi i sačuvani samo u slabom otisku.

Maska na završetku ručke predstavlja lik vodećeg roba iz nove komedije. Lik ima naglašene jagodice i podignute obrve. Oči su velike (lijevo malo veće), kružne i izbočene. Usta su rastvorena i malo ispupčena, sa sačuvanim tragovima bijele boje. Kosa je prikazana bez detalja. Po licu su sačuvani tragovi bijele boje. *Usporedbe:* Bernardini 1961, 20, T. 43. br. 2; Gianotta 1996, str. 47, fig. 14; Valicelli 2006, str. 254; Za ukras usporedi, Lanza 2005, str. 69.

Datacija: 3. st. pr. Kr.

Objava: Kirigin 1979, 183, kat. br. 286, sl. 286 a, b.

7. Oenochoe, Fb 1585

H 27 cm; Øbe 15.4 cm; Øbo 7.5 cm

Entirely preserved, clay, Munsell 7.5 YR, 6/4, neck, interior of three-lobed mouth and handle coated with dark brown paint, base of handle and body are brown-orange, and the belt just above the foot is not painted. The handle has a round cross-section, comes out slightly above the mouth, where there is an appliquéd mask. Wider at upper part than at base. Neck is slim, and transition to belly is prominent. Belly is ribbed, with three rectangular fields at shoulder. The ribbed portion on both sides is farmed with two shallowly incised lines. On its lower portion on the right side there is a dark brown circle which was made during contact between two vessels during firing. The foot is low and ring-shaped.

Decoration: On the shoulder below the dark-brown belt there is a wavy ivy branch which encircles the entire vessel. Leaves and flowers (white) extend from it. Below this, at the level of the spout, there are two birds facing one another. Above and below their heads there are two small circles shaped like the sun and one below the head (white). All decorations only preserved only in the negative. This is followed by the ribbed portion with three smooth rectangular fields; a quadratic spiral in white is rendered in the peripheral fields, while a bird facing left is in the middle one. The decorations are pale and preserved only in light imprint.

The mask at the end of the handle is the image of the lead slave from the New Comedy. The image has prominent cheeks and lifted eyebrows. The eyes are large (the left eye is slightly larger), circular and protruding. The mouth is open and slightly jutting, with traces of white paint. The hair is depicted without detail. Traces of white paint preserved on the face.

Comparisons: Bernardini 1961, 20, P. 43. 2; Gianotta 1996, p. 47, Fig. 14; Valicelli 2006, p. 254; For decoration compare, Lanza 2005, p. 69.

Dating: Third century BC

Publication: Kirigin 1979, p. 183, cat. no. 286, Fig. 286 a, b.



8. Oinohoa, Fb 1590

V 26,2 cm; Øt 14,2 cm; Ød 7,8 cm

Nedostaje ručka, ostatak posude slijepljen od nekoliko komada. Glina Munsell 7,5 YR, 6/6, crni premaz s prilično oštećenom površinom. Prema sačuvanom dnu ručke razvidno je da je bila kružnog presjeka. Trolisna usna je u dijelu izljeva svinuta prema dolje. Vrat je uzak i vitak, a rebrasto tijelo posude elegantno, vrećastog oblika. Rebra su s obje strane uokvirena vodoravnim crtama koje su s gornje strane podebljane dvjema crvenosmeđim linijama između kojih je bijela. Dno posude nema crni premaz, prstenastog je oblika.

Ukras: Uokolo vrata posude ukras je okomito postavljen: bijele kose crtice - riblja kost, između kojih je valovita crvenosmeđa linija. Ukras je s obje strane uokviren trima linijama, crvenom - bijelom - crvenom.

Na rebrastom ramenu posude, unutar metope nalazi se bijela ptica okrenuta ulijevo s pokojom naglašenom linijom tijela u crvenoj boji.

Usporedbe: Cambi, Kirigin, Marin 1981a, str. 70, T. XIII. 18.

Datacija: 3. st. pr. Kr.

Objava: Neobjavljeno.

8. Oenochoe, Fb 1590

H 26.2 cm; Øbe 14.2 cm; Øbo 7.8 cm

Missing handle, remainder of vessel consists of several pieces glued together. Clay, Munsell 7.5 YR, 6/6, black coating with relatively damaged surface. Toward preserved bottom of handle a circular cross-section is visible. Three-leafed mouth at the spout is bent inward. Neck is narrow and slim, and ribbed body has elegant, sack-like shape. The ribs on both sides are framed with horizontal lines which thicken on the top side with two red-brown lines between which there is a white line. The bottom of the vessel has no black gloss; ring-shaped.

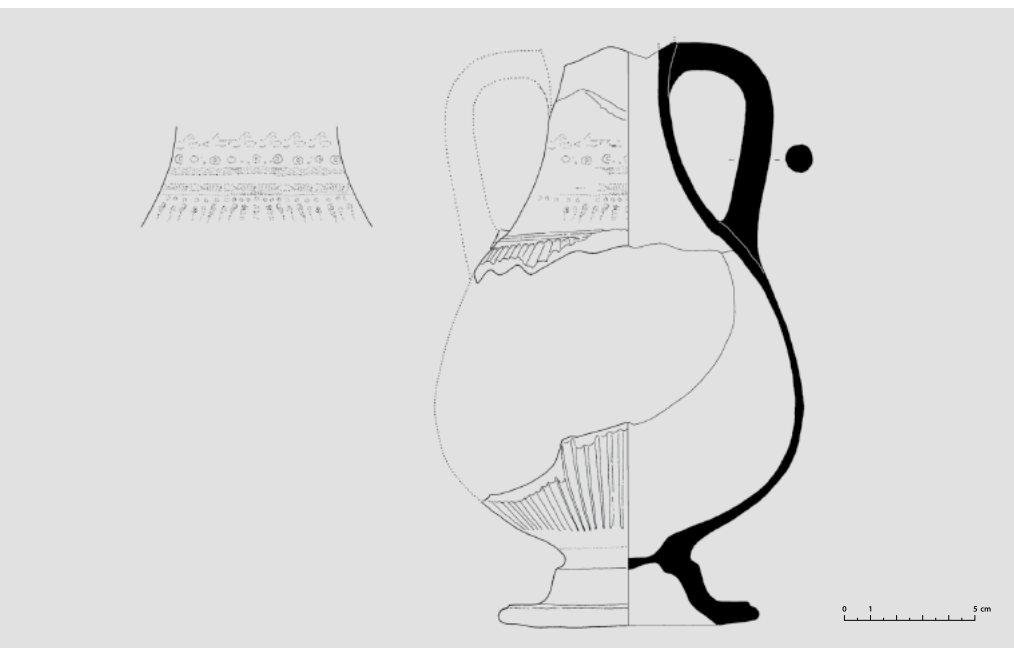
Decoration: Decoration vertically placed around neck of vessel; white slanted lines - fishbone, between which there is a wavy red-brown line. Decoration on both sides framed with three lines, red-white-red.

On vessel's ribbed shoulder, within a metope, there is a white bird facing left with the occasional prominent line on its body rendered in red.

Comparisons: Cambi, Kirigin, Marin 1981a, p. 70, P. XIII. 18.

Dating: Third century BC

Publication: Unpublished.



9. Pelika (πελίκη), Fb 1610

V 22,2 cm; Øt 14,8 cm; Ød 9,8 cm

Nedostaju usna i ručka te dio trbuha i noge. Glina Munsell 7,5 YR, 7/4. Trbuh rebrast, omeđen dvostrukim linijama. Ručka je kratka, okruglog presjeka. Noga je visoka, profilirana i široka. Dno je ravno pa duboko konkavno.

Ukras: A. Na vratu, sačuvan u lošem otisku boje. Vodoravna linija, linija s valovima, ispod nje bijeli astragal te ponovno vodoravna linija. Slijedi vodoravna linija s točkama ispod nje, a zatim bijele crte malo ukošene. Plitko utisnute linije kojima je s gornje strane omeđen početak rebrastog dijela, pojačan bijelom bojom.

Usporedbe: Donekle slična oblikom, Kirigin, Marin 1985a, str. 50-51, T. IX. 7; Delli Ponti 1996, str. 113, br. 18; str. 161, br. 140; Carter, Hall 1998, vol. I, str. 298, br. 1; Lippolis 1994, str. 263, faza B2-C.

Datacija: Kraj 4. st. pr. Kr.

Objava: Neobjavljeno.

9. Pelike (πελίκη), Fb 1610

H 22.2 cm; Øbe 14.8 cm; Øbo 9.8 cm

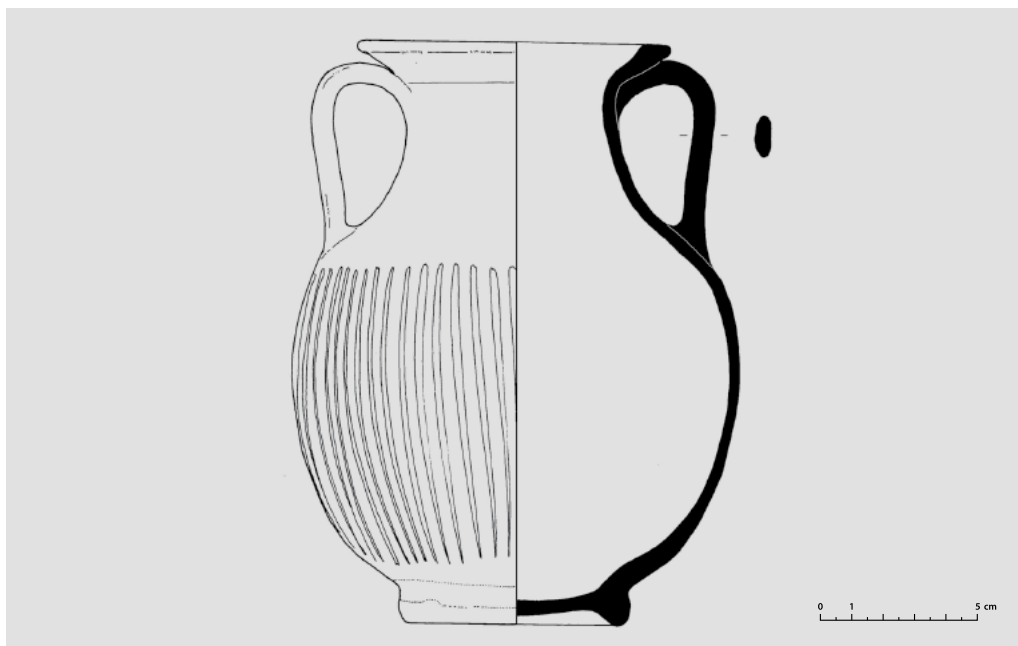
The mouth and handle and part of the belly and foot are missing. Clay, Munsell 7.5 YR, 7/4. Belly ribbed, bounded by double lines. Handle is short, with round cross-section. Foot is high, fully-formed and wide. Bottom is flat then deeply concave.

Decoration: A. On neck, preserved in poor paint impression. Horizontal line, line with waves, below it a white astragal and another horizontal line. Followed by horizontal line with dots below it, and then a white slightly-slanted line. Shallowly imprinted line which borders the ribbed section on the upper side, enhanced with white paint.

Comparisons: Somewhat similar in shape, Kirigin, Marin 1985a, pp. 50-51, P. IX. 7; Delli Ponti 1996, p. 113, no. 18; p. 161, no. 140; Carter, Hall 1998, vol. I, p. 298, no. 1; Lippolis 1994, p. 263, phase B2-C.

Dating: End of fourth century BC

Publication: Unpublished.



10. Pelika, Fb 1588

V 18,5 cm; Øu 10,0 cm; Øt 14,6 cm; Ød 7,5 cm

Sačuvana u cijelosti, glina Munsell 10 YR, 8/4, crni premaz kojeg je sjaj dijelom nestao. Po površini trbuha i na nozi manja oštećenja. Širokog je vrata, ravne široke usne koja se naslanja na ručke vrpčastog presjeka. Rame je izraženo, trbuh širok, prekriven širokim kanelurama, s gornje strane omeđen linijom koja je bila pojačana bijelom bojom. Noga niska, prstenastog oblika, rub premazan crnom bojom. Pojas nad nogom nije obojen.

Usporedbe: Abramić 1949, T. II; Kirigin, Marin 1985a, str. 47-48, T. VIII. br. 3, oblikom T. IX. br. 3; Miše 2005, str. 40, br. 18

Datacija: 3. st. pr. Kr.

Objava: Neobjavljeno.

10. Pelike, Fb 1588

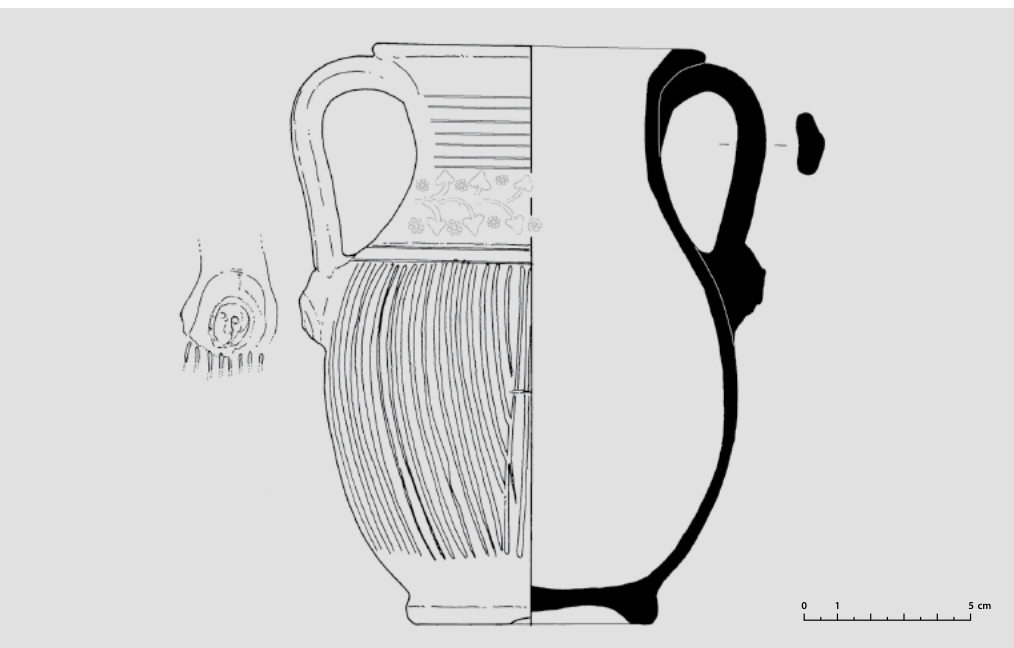
H 18.5 cm; Øm 10.0 cm; Øbe 14.6 cm; Øbo 7.5 cm

Entirely preserved, clay, Munsell 10 YR, 8/4, black coating whose shine has partially been lost. Minor damage on surface of belly and on foot. Neck is wide, wide straight mouth which leans on handle with ribbon-shaped cross-section. Shoulders are prominent, belly is wide, covered with wide flutes, bordered by line on outer side which was enhanced with white paint. Foot is low, ring-shaped, edge coated with black paint. Belt above foot is not painted.

Comparisons: Abramić 1949, P. II; Kirigin, Marin 1985a, pp. 47-48, P. VIII. 3, shape P. IX. 3; Miše 2005, p. 40, no. 18.

Dating: Third century BC

Publication: Unpublished.



11. Pelika, Fb 1614

V 17 cm; Øu 10 cm; Øt 12,3 cm; Ød 6,4 cm

Potpuno sačuvana, glina Munsell 10YR, 7/6, crni premaz koji je otpao s površine posude, noga nije bila bojana. Širokog tijela, usna široka i ravna. Ručke su kratke, vrpčastog presjeka, s izraženim rebrom, a idu od ramena posude do ispod usne. Na dnu obiju ručaka nalaze se aplicirani ukrasi u obliku ženskih glava. Lice na maskama prikazano bez posebnih detalja. Vrat je širok, a od ramena je odijeljen trima plitkim vodoravnim linijama. Ispod njih posuda je rebrasta. Noga je niska, bez crnog premaza, dno je nisko, prstenastog oblika.

Ukras: na vratu ostaci u negativu; bršljanova vitica s listovima i cvjetovima, neznatni ostaci bijele boje.

Usporedbe: Br. 10.

Datacija: 3. st. pr. Kr.

Objava: Neobjavljeno.

11. Pelike, Fb 1614

H 17 cm; Øm 10 cm; Øbe 12.3 cm; Øbo 6.4 cm

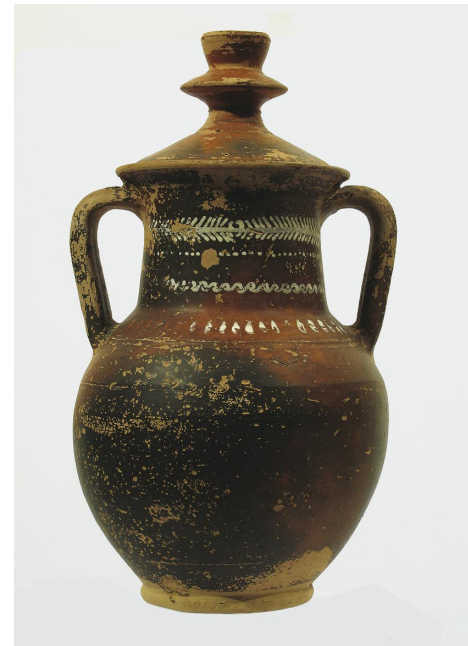
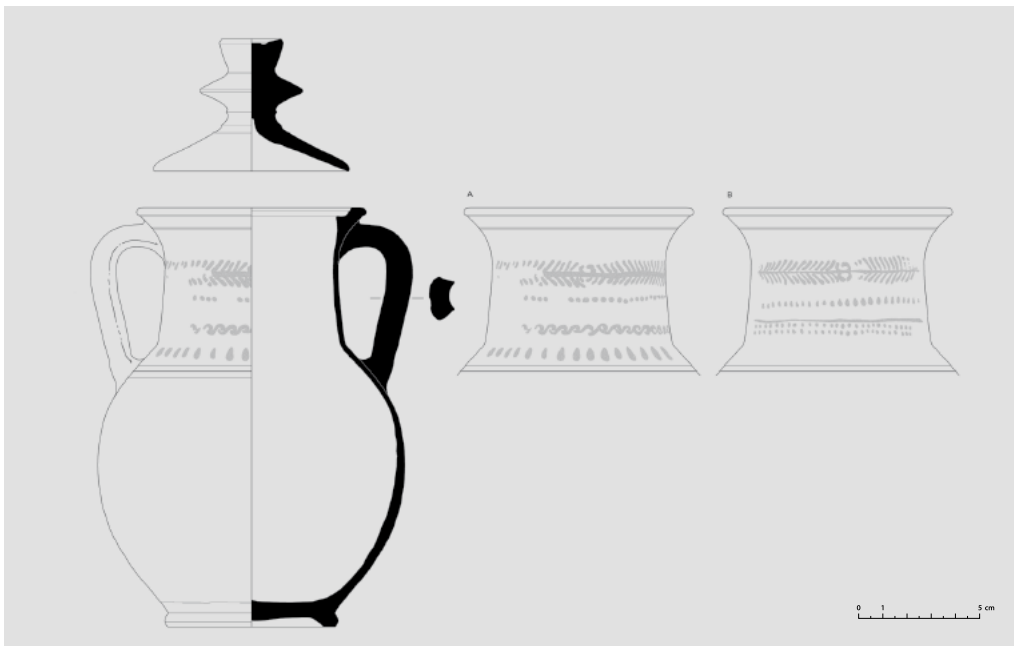
Entirely preserved, clay, Munsell 10YR, 7/6, black coating which has fallen from the surface of the vessel, foot not painted. Wide body, mouth wide and straight. Handles are short, ribbon-shaped cross-section, with prominent rib, running from shoulder of vessel to below the mouth. Appliquéd decorations shaped like woman's head at bottom of both handles. Face on masks depicted without specific details. Neck is wide, separated from shoulder by three shallow horizontal line. Below them the vessel is ribbed. Foot is low, without black gloss, bottom is low and ring-shaped.

Decoration: remains in negative on neck; ivy tendrils with leaves and flowers, negligible remains of white paint.

Comparisons: No. 10.

Dating: Third century BC

Publication: Unpublished.



12. Pelika s poklopcem, Fb 1589, poklopac Fb 1607

V 17,3 cm (s poklopcem 22,5 cm); Øu 9,6 cm; Øt 12,1 cm; Ød 6,9 cm; pokl. V 5,5 cm; Ø 8,1 cm

Sačuvana u cijelosti, glina Munsell 7,5 YR, 7/6, smeđi premaz izvana i iznutra. Noga i mali pojas nad nogom nisu premazani. Premaz oštećen po površini. Širokog je vrata, trbušasta, ručke su vrpčastog presjeka, sa žlijebom po sredini. Noga niska, prestenastog oblika.

Ukras: A. Između ručaka vitica ide od svake ručke, susrećući se u sredini u nespojeni kružić. Ispod točkasta linija te motiv valova. Na ramenu okomite crtice. B. Isto kao A., ali ispod točkaste linije nalazi se ravna linija, ispod koje je dvostruka točkasta linija.

Usporedbe: Cambi, Kirigin, Marin 1981 a, str. 69, T. X. 14.

Datacija: 3. st. pr. Kr.

Objava: Neobjavljeno.

12. Pelike with lid, Fb 1589, lid Fb 1607

H 17.3 cm (with lid 22.5 cm); Øm 9.6 cm; Øbe 12.1 cm; Øbo 6.9 cm; lid. H 5.5 cm; Ø 8.1 cm;

Entirely preserved, clay, Munsell 7.5 YR, 7/6, brown coating inside and out. Foot and small belt above foot not glossed. Gloss damaged on surface. Wide neck, belly-shaped, handles with ribbon-shaped cross-section, with groove in middle. Foot low and ring-shaped.

Decoration: A. Between handles a tendril runs from each, meeting in the middle in an unconnected circle. Wave motif below dotted line. Vertical lines on shoulder.

B. Same as A., but straight line below dotted line, with doubled dotted line below it.

Comparisons: Cambi, Kirigin, Marin 1981a, p. 69, P. X. 14.

Dating: Third century BC

Publication: Unpublished.



13. Pelika, Fb 1616

V 20,9 cm; Øu 8,1 cm; Øt 11,5 cm; Ød 6,8 cm

Nedostaje ručka, glina Munsell 7,5 YR, 7/6, crni premaz, noga nije bojana. Premaz dijelom oštećen. Usna široka, profilirana, vrat dug, ručke ovalnog presjeka. Vrećast oblik tijela koje je rebrasto od ručaka naniže. Rebrasto područje podijeljeno u dva dijela od kojih je onaj gornji znatno manji od donjeg. Noga profilirana, dno ravno pa zaobljeno.

Ukras: Na vratu pojas s bršljanovom viticom, prilično oštećen, s obje strane uokviren trima linijama (bijelo-crveno-bijelo). Ispod toga dvije bijele ptice okrenute jedna prema drugoj. Detalji na pticama izvedeni smeđom bojom. Između njih vitičasti floralni ukras koji izlazi iz polukruga. Slijedi rebrasto područje uokvireno plitko urezanom linijom obojenom u crveno-bijelo pa ispod bijelo. U pojasu koji dijeli rebrasti dio su bijele točke uokvirene crvenom i bijelom linijom, s obje strane. Na dnu ručaka bijele okomite crte.

Usporedbe: Sličan tip u Tarantu stavljen je u fazu B2-C, Lippolis 1994, str. 263.

Datacija: Prva polovina 3. st. pr. Kr.

Objava: Lisičar 1950, str. 46.; Kirigin 1986, str. 24, br. 52; Kirigin 1996, str. 131.

13. Pelike, Fb 1616

H 20.9 cm; Øm 8.1 cm; Øbe 11.5 cm; Øbo 6.8 cm

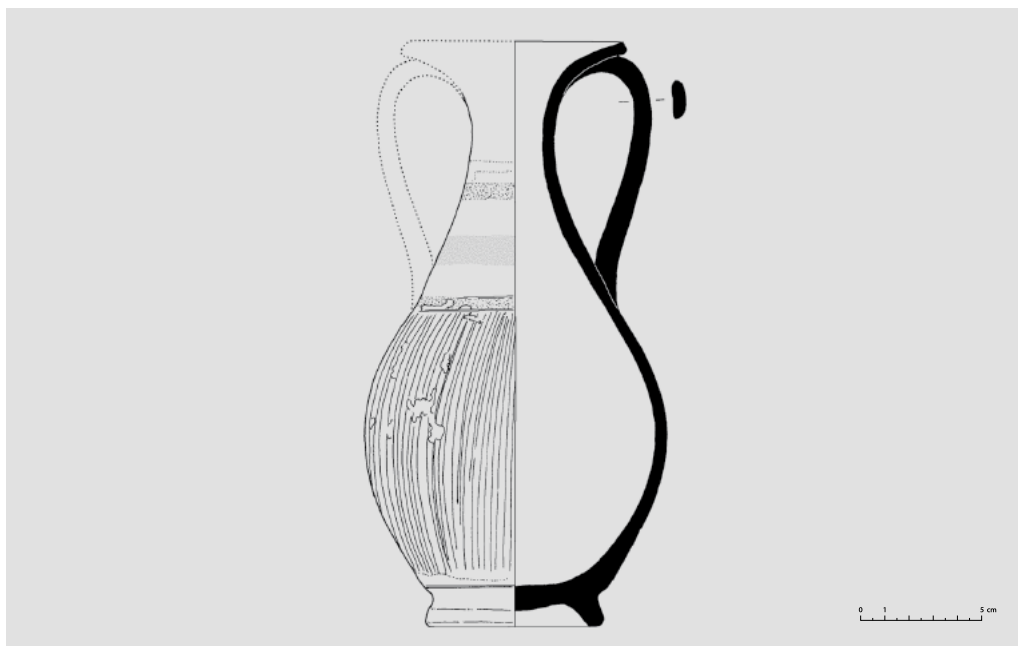
Handle missing, clay, Munsell 7.5 YR, 7/6, black coating, foot not painted. Coating partially damaged. Wide mouth, fully-formed, neck long, handles have oval cross-section. Sack shape of body which is ribbed from handles downward. Ribbed section divided into two parts of which the upper section is considerably smaller than the lower section. Foot fully-formed, bottom flat then rounded.

Decoration: Belt with ivy tendrils on neck, rather damaged, framed on both sides with three lines (white-red-white). Below this, two white bird facing one another. Details on the birds rendered in brown. Between them tendril-shaped floral decoration which extends outside the semi-circle. Followed by ribbed area framed with shallowly incised line painted in red-white and white below. In the belt dividing the rib section there are white dots framed with red and white lines on both sides. White vertical lines at bottom of handle.

Comparisons: Similar type in Taranto placed in phase B2-C, Lippolis 1994, p. 263.

Dating: First half of third century BC

Publication: Lisičar 1950, p. 46.; Kirigin 1986, p. 24, no. 52; Kirigin 1996, p. 131.



14. Pelika, Fb 1591

V 16,5 cm; Øu oko 6 cm; Øt 8,6 cm; Ød 4,9 cm

Nedostaje dio usne i ručka, ostatak posude dobro je očuvan, s mjestimičnim oštećenjima boje. Crni premaz, pojas neposredno iznad noge nije bojan. Glina Munsell 7,5 YR, 7/4. Prijelaz trbuha k vratu vitko je izveden, vrat je uzak. Ručke su vrpčastog presjeka i idu od ramena posude do ispod usne, koja se naslanja na njih. Od korijena ručke do noge posuda je rebrasta. Noga je prstenastog oblika.

Ukras: na ramenu posude rebra su odvojena od vrata crvenom i bijelom linijom. Bijela je istrošena. Na vratu je crvenosmeđa linija, a iznad nje dvije bijele, prilično istrošene. *Usporedbe*: Cambi, Kirigin, Marin 1981a, str. 69, T. X. 23; Melissano 1995, str. 238, br. 1, fig. 12-13.; Delli Ponti 1996, str. 119, br. 39; str. 137, br. 86.

Datacija: Prva polovina 3. st. pr. Kr.

Objava: Neobjavljeno.

14. Pelike, Fb 1591

H 16.5 cm; Øm ca 6 cm; Øbe 8.6 cm; Øbo 4.9 cm

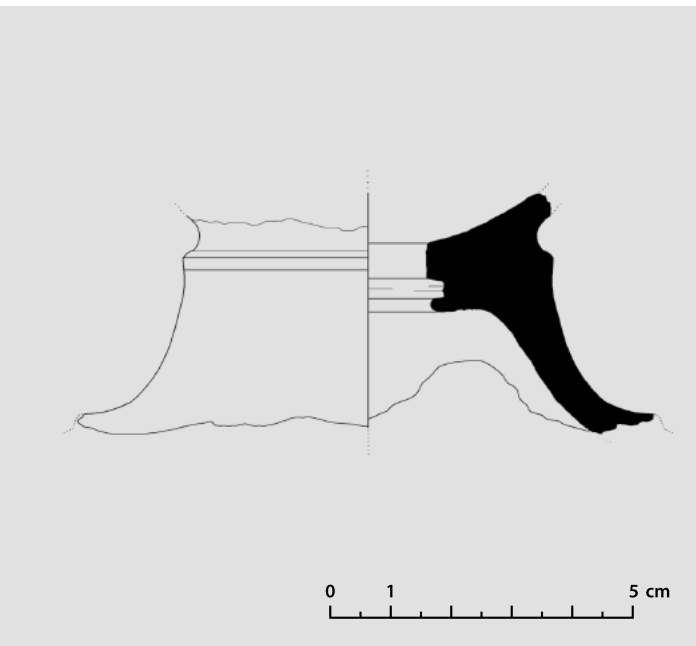
Part of mouth and handle missing, remainder of vessel well-preserved, with damage to paint at places. Black coating, belt immediately above foot not painted. Clay, Munsell 7.5 YR, 7/4. Transition from belly to neck is rendered slimly, neck is narrow. Handles have ribbon-shaped cross-section and run from shoulder to below mouth, which leans on them. From base of handle to foot the vessel is ribbed. Foot is ring-shaped.

Decoration: on shoulder of vessel ribs are divided from neck by a red and white line. The white line is faded. Red-brown line on neck, above it two white, line, rather faded.

Comparisons: Cambi, Kirigin, Marin 1981a, p. 69, P. X. 23; Melissano 1995, p. 238, no. 1, Fig. 12-13.; Delli Ponti 1996, p. 119, no. 39; p. 137, no. 86.

Dating: First half of third century BC

Publication: Unpublished.



15. Dno pelike, Fb 1612

V 4,9 cm; širina 9,7 x cm

Ulomak dna posude, sačuvan je dio koji spaja dno s recipijentom. Na tom spoju nalazi se udubljenje obojeno crvenosmeđom bojom. Glina, Munsell 2,5 Y, 7/2.

Usporedbe: Vjerojatno kao br. 13.

Datacija: Uvjetno kraj 4. - početak 3. st. pr. Kr.

Objava: Neobjavljeno.

15. Bottom of pelike, Fb 1612

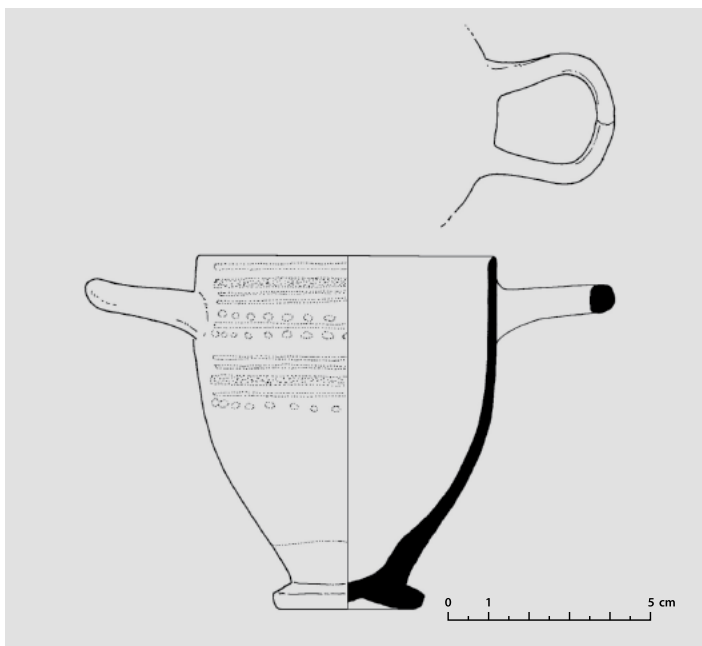
H 4.9 cm; width 9.7 x cm.

Fragment of vessel's bottom, part which connects bottom with recipient preserved. Red-brown painted depression at this connection. Clay, Munsell 2.5 Y, 7/2.

Comparisons: Probably as no. 13.

Dating: Conditionally end of fourth-beginning of third century BC

Publication: Unpublished.



16. Skifos (σκύφος), Fb 1598

V 8,9 cm; Øu 7 cm; Øt 7,6 cm; Ød 3,7 cm

Cijeli, manja oštećenja na nozi. Glina Munsell 10YR, 8/4, crno-tamnosmeđi premaz. Široko tijelo okomito se spušta prema nozi, koja je niska, prstenastog oblika.

Ukras: A. Između ručaka bijela linija, pa deblja crvena, pa dvije bijele. Slijedi dvostruki red točaka, između kojih je bijela linija, dvostruka bijela, deblja crvena, bijela linija i ispod nje red točaka. B. Između ručaka red točaka, dvostruka linija, red točaka (bijelo).

Usporedbe: Cambi, Kirigin, Marin 1981a, T. X. 26; Kirigin, Marin 1985a, T. VIII. 1; T. IX. 9, 11, 16.

Datacija: Prva polovina 3. st. pr. Kr.

Objava: Neobjavljeno.

16. Skyphos (σκύφος), Fb 1598

H 8.9 cm; Øm 7 cm; Øbe 7,6 cm; Øbo 3.7 cm

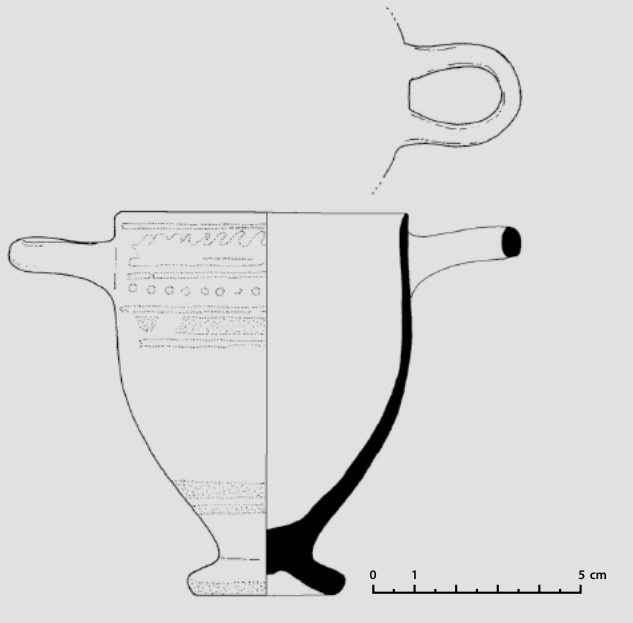
Whole, minor damage on foot. Clay, Munsell 10YR, 8/4, black-dark brown coating. Wide body vertically descending toward foot, which is low and ring-shaped.

Decoration: A. White line between handles, then thicker red line, then two white lines. Followed by double row of dots, between which there is a white line, double white line, thicker red line, white line and under it a row of dots. B. Row of dots between handles, double line, row of dots (white).

Comparisons: Cambi, Kirigin, Marin 1981a, P. X. 26; Kirigin, Marin 1985a, P. VIII. 1; P. IX. 9, 11, 16.

Dating: First half of third century BC

Publication: Unpublished.



17. Skifos, Fb 1597

V 9,2 cm; Øu 7,2 cm; Ød 3,7 cm

Cijeli, kao br. 16, glina Munsell 10YR, 7/4.

Ukras: A. Ispod usne bijela linija, zatim deblja nazubljena. Slijedi tanja linija, točke, tanja (sve bijelo), deblja crvena, tanja bijela. B. Između ručaka dvostruki red točaka između kojih je linija (bijelo).

Usporedbe: Br. 16.

Datacija: Prva polovina 3. st. pr. Kr.

Objava: Neobjavljeno.

17. Skyphos, Fb 1597

H 9.2 cm; Øm 7.2 cm; Øbo 3.7 cm

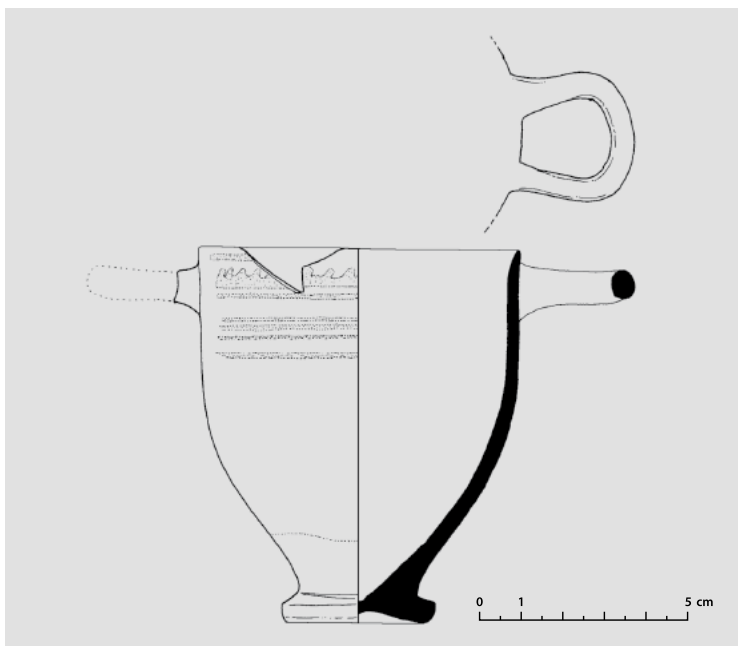
Whole, like no. 16, clay, Munsell 10YR, 7/4.

Decoration: A. White line below mouth, then thick toothed line. Followed by thinner line, dots, thinner (all white), thicker red, thinner white. B. Double row of dots between handles, with line (white) between them.

Comparisons: No. 16.

Dating: First half of third century BC

Publication: Unpublished.



18. Skifos, Fb 1601

V 9 cm; Øu 7,7 cm; Ød 3,7 cm

Nedostaje ručka s dijelom usne i trbuha, glina Munsell 10 YR, 8/4.

Ukras: Nalazi se samo s jedne strane, između ručaka, a svodi se na bijele linije ispod usne, nakon njih slijedi linija s okomitim resicama ispod koje je opet tanka linija. Sve linije su bijele. Slijede ponovno dvije tanke linije iznad kojih se nalaze točke u nizu. Ispod ovog je sačuvan samo manji trag bijele linije.

Usporedbe: Br. 16.

Datacija: Prva polovina 3. st. pr. Kr.

Objava: Neobjavljeno.

18. Skyphos, Fb 1601

H 9 cm; Øm 7.7 cm; Øbo 3.7 cm

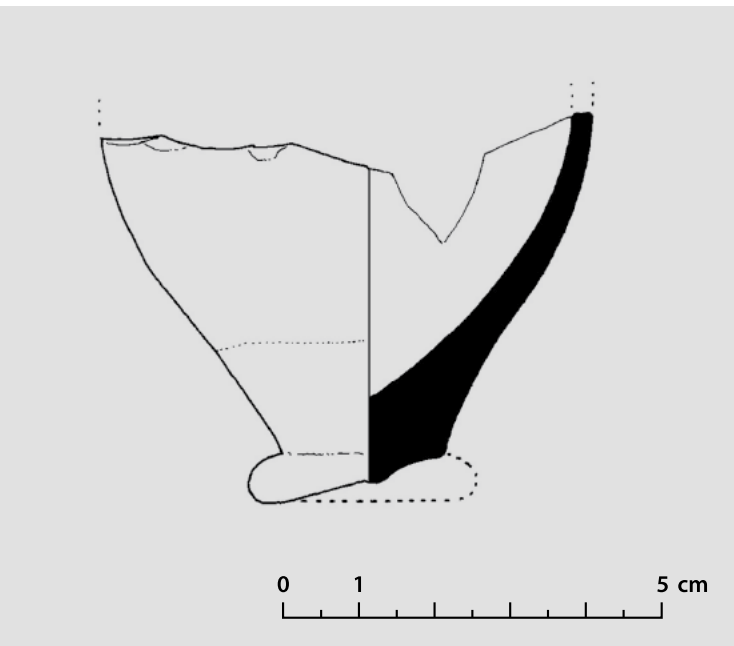
Handle with part of the mouth and belly are missing, clay, Munsell 10 YR, 8/4.

Decoration: Only on one side, between handles, consisting of white line below mouth, followed by vertical tassels below which there is once more a thin line. All lines are white. Followed once more by two thin lines above which there are dots in a row. Only a minor trace of a white line is preserved under this.

Comparisons: No. 16.

Dating: First half of third century BC

Publication: Unpublished.



19. Skifos, Fb 1611

V 4,8 cm; širina 6,6 cm

Sačuvani dio dna i dijela trbuha slijepljen je od dva dijela.

Glina Munsell 5 YR, 5/5.

Usporedbe: Br. 16.

Datacija: Prva polovina 3. st. pr. Kr.

Objava: Neobjavljeno.

19. Skyphos, Fb 1611

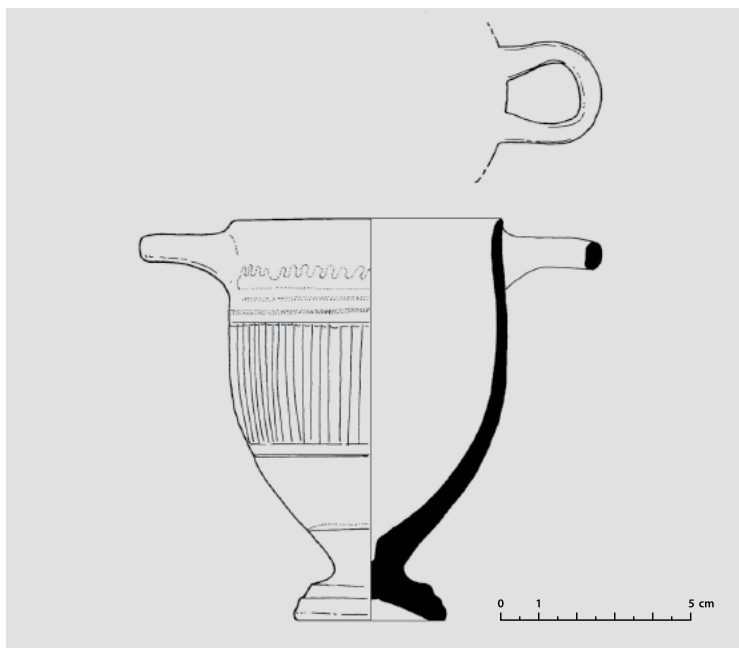
H 4.8 cm; width 6.6 cm

Part of bottom preserved and part of belly consisting of two pieces glued together. Clay, Munsell 5 YR, 5/5.

Comparisons: No. 16.

Dating: First half of third century BC

Publication: Unpublished.



20. Skifos, Fb 1599

V 10,1 cm; Øu 7 cm; Ød 3,8 cm

Potpuno je sačuvan, crni premaz metalnog sjaja, pojas iznad noge nije premazan. Glina, Munsell 10YR, 7/4. Trbuh je rebrast. Noga je profilirana, dno ravno pa konkavno.

Ukras: Ispod usne između ručaka dvostruka linija sačuvana u negativu (bijelo). Ispod toga se nalazi deblja nazubljena linija, zatim tanka linija, slijedi rebrasti pojas. Pojas je odvojen dvjema plitko urezanim linijama od kojih je gornja bila obojana u crveno, a donja bez boje, kao i linija ispod nje. Dno je obojano u crno.

Usporedbe: Bernardini 1961, T. 19. br. 6; Lisičar 1973, T. XVII; Cambi, Kirigin, Marin 1981a, str. 69, T. X. 18, 33; Kirigin 1985, str. 107, T. III; Jeličić-Radonić, Rauter-Plančić 1995, str. 75, br. 39, str. 105, br. 71, 71a; Kušan-Špalj, Rendić-Miočević 2006, str. 56-57, br. 90, 91; Vallicelli 2006, str. 256, br. 7.

Datacija: 3. st. pr. Kr.

Objava: Neobjavljeno.

20. Skyphos, Fb 1599

H 10.1 cm; Øm 7 cm; Øbo 3.8 cm

Completely preserved, black gloss with metallic shine, belt above foot not coated. Clay, Munsell 10YR, 7/4. Belly is ribbed. Foot is fully-formed, bottom flat then concave.

Decoration: Below mouth between handles, double line preserved in negative (white). Below it a thick white toothed line, then a thin line, followed by ribbed belt. Belt separated by two shallowly incised line of which the upper line is painted red, and the lower has no paint. The same applies to the line below this one. The bottom is painted red.

Comparisons: Bernardini 1961, P. 19. 6; Lisičar 1973, P. XVII; Cambi, Kirigin, Marin 1981a, p. 69, P. X. 18, 33; Kirigin 1985, p. 107, P. III; Jeličić-Radonić, Rauter-Plančić 1995, p. 75, no. 39, p. 105, no. 71, 71a; Kušan-Špalj, Rendić-Miočević 2006, pp. 56-57, no. 90, 91; Vallicelli 2006, p. 256, no. 7.

Dating: Third century BC

Publication: Unpublished.



21. Skifos, Fb 1600

V 9,4 cm; Øu 7,3 cm; Ød 3,9 cm

Nedostaje ručka, glina Munsell 7,5 YR, 7/4. Vanjska i unutarnja površina bojane u crno, no boja je prilično oštećena. Trbuh je rebrast od visine ramena do dna. Rebrasti pojas omeđen je plitko urezanim linijama bojanim zagasitocrvenom bojom. Ručka se koso spaja s tijelom posude.

Ukras: A-B. Ispod usne dvostruka linija bijele boje, a ispod njih nespretno izrađena nazubljena linija. Ispod slijedi nešto deblja linija zagasitocrvene, gotovo smeđe boje. Noga posude nije obojana.

Usporedbe: Br. 20.

Datacija: 3. st. pr. Kr.

Objava: Neobjavljeno.

21. Skyphos, Fb 1600

H 9.4 cm; Øm 7.3 cm; Øbo 3.9 cm

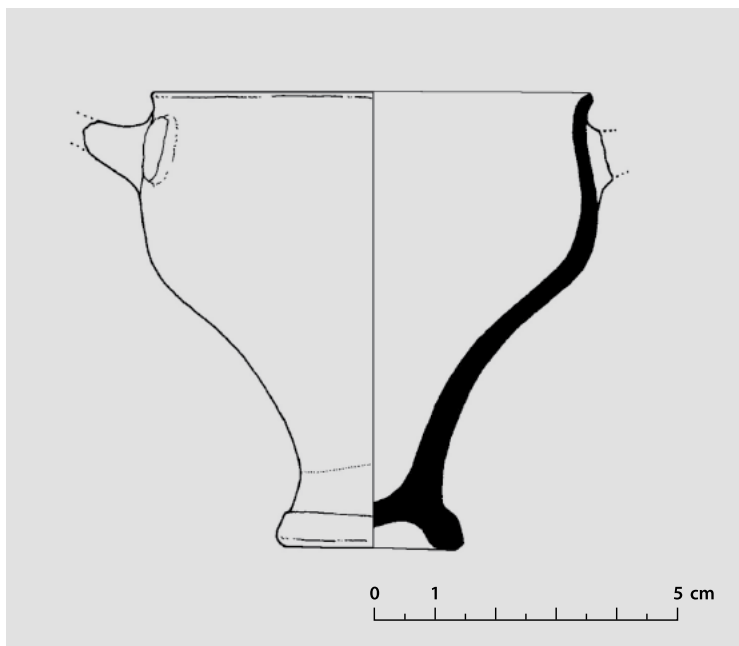
Handle missing, clay, Munsell 7.5 YR, 7/4. External and internal surface painted black, but the paint is considerably damaged. Belly is ribbed from height of shoulder to bottom. Ribbed belt bordered by shallowly engraved lines painted in muted red. Handle merges at slant with body of vessel.

Decoration: A-B. Below mouth double white line, and below them a clumsily rendered toothed line. Below a somewhat thicker muted red, almost brown, line follows. Foot of vessel not painted.

Comparisons: No. 20.

Dating: Third century BC

Publication: Unpublished.



Keramika s crnim premazom

22. Skifos, Fb 1613

V 7,8 cm; Øu 7,4 cm; Ød 3,1 cm

Nedostaju ručke, s neznatnim oštećenjem usne, crni premaz metalnog sjaja. Glina Munsell 7,5 YR, 7/4. Noga i pojas iznad nje nisu bojani. Tijelo je široko i naglo prelazi k nozi, koja je visoka i vitka te završava na bazi koja je prstenastog oblika. Tako profil posude poprima S-oblik.

Usporedbe: Edwards 1975, str. 66-71, T. 50. 320, 331, 371; Morel 1981, str. 307-308, T. 4342b 1; Cambi, Kirigin, Marin 1981a, T. XI. 25; malo drukčija noga Marović 1980, str. 52-53, tab. 7, 1; Kirigin 1985, str. 107, T. III. sl. 4; Jeličić-Radonić, Rauter-Plančić 1995, str. 69, br. 28; 82, br. 44; Kirigin, Hayes, Leach 2002, str. 249, T. IV/A 6 i E 1; Miše 2005, str. 36, br. 14 i 15, sl. 9.

Datacija: Zadnja trećina 4. st. pr. Kr.

Objava: Neobjavljeno.

Black gloss ware

22. Skyphos, Fb 1613

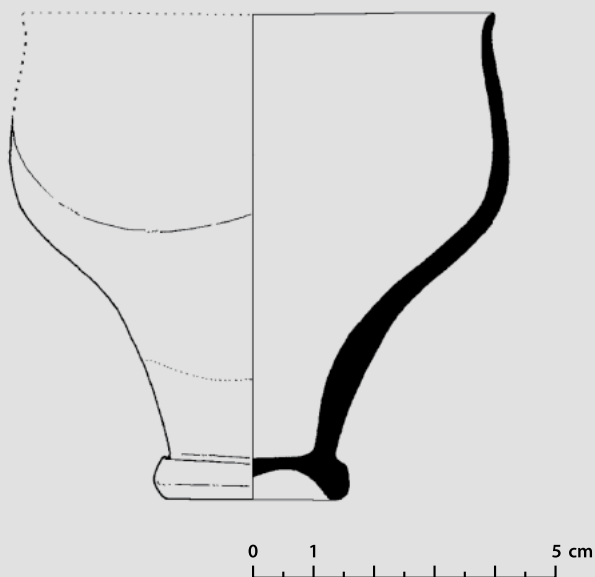
H 7.8 cm; Øm 7.4 cm; Øbo 3.1 cm

Missing both handles, with negligibly damaged mouth, black gloss with metallic shine. Clay, Munsell 7.5 YR, 7/4. Foot and belt above it not painted. Body is wide with a sharp transition to foot, which is high and slim and ends at the base which has a ring shape. Thus the vessel's profile assumes an S-shape.

Comparisons: Edwards 1975, pp. 66-71, P. 50. 320, 331, 371; Morel 1981, pp. 307-308, P. 4342b 1; Cambi, Kirigin, Marin 1981a, P. XI. 25; slightly different foot, Marović 1980, pp. 52-53, P. 7. 1; Kirigin 1985, p. 107, P. III. 4; Jeličić-Radonić, Rauter-Plančić 1995, p. 69, no. 28; 82, no. 44; Kirigin, Hayes, Leach 2002, p. 249, P. IV/A 6 and E 1; Miše 2005, p. 36, no. 14 and 15, fig. 9.

Dating: Final third of fourth century BC

Publication: Unpublished.



23. Skifos, Fb 1602

V 8 cm; Øu 7,6 cm; Ød 3,2 cm

Nedostaje veći dio tijela skifosa i ručke, glina Munsell 7,5 YR, 7/4. Tijelo čaše premazano je crnom bojom metalnog sjaja, glina kao br. 17. Mjestimice po površini i unutrašnjosti posude boja je oštećena. Noga i pojas iznad nisu bojani. Tijelo je široko i naglo prelazi k nozi, koja je visoka i vitka te završava na bazi koja je prstenastog oblika. Tako profil posude poprima S-oblik.

Usporedbe: Br. 22.

Datacija: Zadnja trećina 4. st. pr. Kr.

Objava: Neobjavljeno.

23. Skyphos, Fb 1602

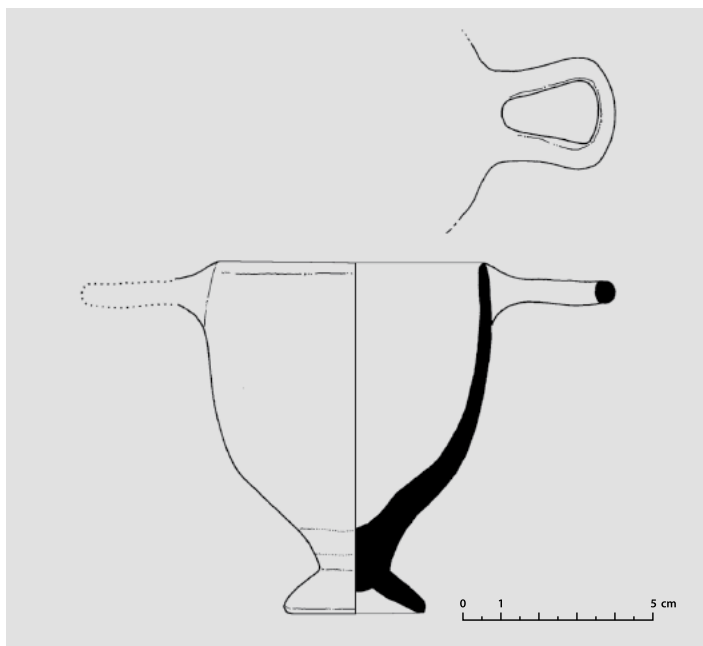
H 8 cm; Øm 7.6 cm; Øbo 3.2 cm

Most of skyphos and handle missing, clay, Munsell 7.5 YR, 7/4. Body of cup coated with black gloss with metallic shine, clay as in no. 17. Paint damaged at places on the surface and interior of vessel. Foot and belt not painted. Body is wide with a sharp transition to foot, which is high and slim and ends at the base which has a ring shape. Thus the vessel's profile assumes an S-shape.

Comparisons: No. 22.

Dating: Final third of fourth century BC

Publication: Unpublished.



24. Skifos, Fb 1603

V 9 cm; Øu 7,1 cm; Ød 3,6 cm

Nedostaje ručka s dijelom usne, kao br. 16. Glina Munsell 10 YR, 7/4., crni premaz izvna i iznutra, koji je dijelom otpao.

Široka usna s dugim, tankim, vodoravno položenim ručkama. Trbuh ovalnog oblika s uskim završetkom prema nozi. Noga niska, ukošena, dno ravno.

Usporedbe: Cambi, Kirigin, Marin 1981a, T. XI. 3, 16, 32; Lisičar 1950, str. 43, sl. 4; Jeličić-Radonić, Rauter-Plančić 1995, str. 69, br. 28; str. 82, br. 44; Kirigin, Hayes, Leach 2002, str. 249, T. IV, E br. 1.

Datacija: 3. st. pr. Kr.

Objava: Neobjavljeno.

24. Skyphos, Fb 1603

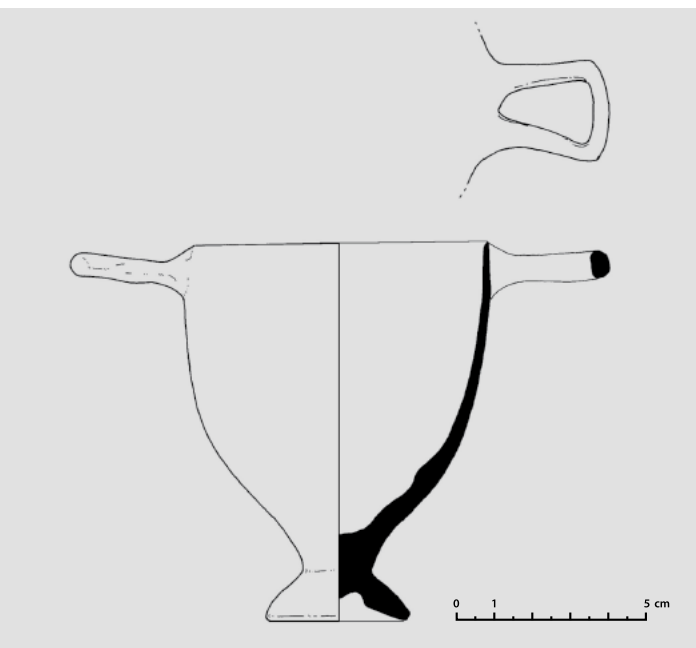
H 9 cm; Øm 7.1 cm; Øbo 3.6 cm

Missing handle with part of mouth, like no. 16. Clay, Munsell 10 YR, 7/4, black gloss outside and inside, which has partially fallen off. Wide mouth with long, thin, horizontally placed handles. Belly oval with narrow end toward foot. Foot low, slanted, flat bottom.

Comparisons: Cambi, Kirigin, Marin 1981a, P. XI. 3, 16, 32; Lisičar 1950, p. 43, Fig. 4; Jeličić-Radonić, Rauter-Plančić 1995, p. 69, no. 28; p. 82, no. 44; Kirigin, Hayes, Leach 2002, p. 249, P. IV. E 1.

Dating: Third century BC

Publication: Unpublished.



25. Skifos, Fb 1596

V 9,6 cm; Øu 8,1 cm; Ød 3,7 cm

Potpuno je sačuvan, glina Munsell 2,5 Y, 7/3, crni premaz izvana i iznutra koji je u cijelosti otpao. Široka usna s dugim, tankim, vodoravno položenim ručkama. Trbuh ovalnog oblika s uskim završetkom prema nozi. Noga niska, ukošena, dno ravno.

Usporedbe: Br. 24.

Datacija: 3. st. pr. Kr.

Objava: Neobjavljeno.

25. Skyphos, Fb 1596

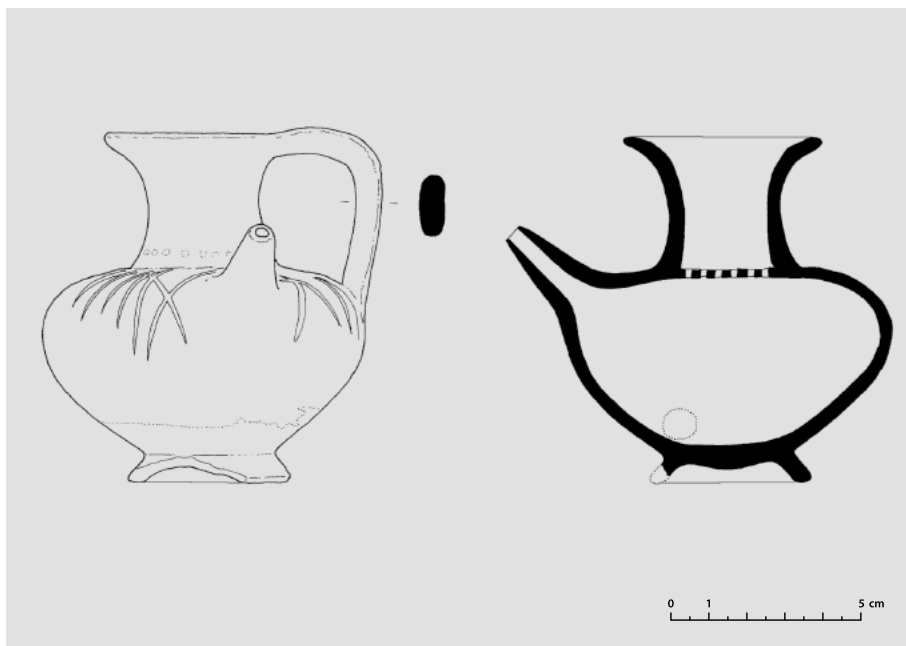
H 9.6 cm; Øm 8.1 cm; Øbo 3.7 cm

Completely preserved, clay, Munsell 2.5 Y, 7/3, black gloss outside and inside which has completely fallen off. Wide mouth with long, thin, horizontally placed handles. Belly oval with narrow end toward foot. Foot low, slanted, flat bottom.

Comparisons: No. 24.

Dating: Third century BC

Publication: Unpublished.



26. Vrčić, Fb 1617

V 9 cm; Øu 4,9 cm; Øt 8,2 cm; Ød 4 cm

Sačuvan u cijelosti, manje oštećenje na nozi, glina Munsell 7,5 YR, 7/4, crni premaz, pojas nad nogom i noga nisu bojani. Premaz dijelom oštećen. Vrat je okomit, s ravnom usnom, malo izvučenom prema van. Rame je naglašeno, vodoravno, ručka je vrpčastog presjeka i završava u visini usne. Unutar usne u visini ramena nalazi se sito. Iz vrha ramena koso se izdiže lijevak koji se sužava prema otvoru. Od ramena trbuh se dosta oštro svija prema nozi, koja je niska, kosa i prstenastog oblika. Noga nije premazana.

Ukras: Rame je ukrašeno plitko utisnutim žljebovima. Sa strana lijevka nalazi se ukras oblika slova X.

Usporedbe: oblikom najbliža Morel 1981, str. 389, Pl. 191;

ukrasom: Elliott 1998, str. 654, F5; Lippolis 1994, str. 265, faza C.

Datacija: Početak 3. st. pr. Kr.

Objava: Neobjavljeno.

26. Juglet, Fb 1617

H 9 cm; Øm 4.9 cm; Øbe 8.2 cm; Øbo 4 cm

Completely preserved, minor damage on foot, clay, Munsell 7.5 YR, 7/4, black gloss, belt above foot and foot not painted. Gloss partially damaged. Neck is vertical, with flat mouth, protrudes outward slightly. Shoulder prominent, horizontal, handle with ribbon-shaped cross-section ending at level of mouth. Strainer inside mouth at level of shoulder. Spout rises from top of shoulder at an angle, narrows toward opening. From the shoulder, the belly quite sharply curves toward foot, which is low, slanted and ring-shaped. Foot not coated.

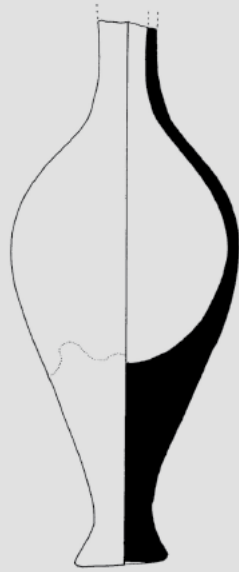
Decoration: Shoulder decorated with shallowly impressed grooves. X-shaped decoration on side of spout.

Comparisons: shape: closest, Morel 1981, p. 389, P. 191;

decoration: Elliott 1998, p. 654, F5; Lippolis 1994, p. 265, phase C.

Dating: Beginning of third century BC

Publication: Unpublished.



27. Unguentarij, Fb 1605

V 15,9 cm; Øt 7 cm; Ød 2,7 cm

Oštećen, nedostaje manji dio vrata i usna. Glina Munsell 2,5 Y, 8/4, crni premaz do prijelaza k nozi. Trbuh s blago izraženim ramenom. Dno ravno.

Usporedbe: Cambi, Kirigin, Marin 1981a, str. 69, T. XI. br. 6, 7; str. 70, T. XIII. 16; Jeličić-Radonić, Rauter-Plančić 1995, str. 67, br. 17; Graepler 1994, str. 290, sl. 221; Fozzer 1994, str. 327, sl. 265.

Datacija: 3. st. pr. Kr.

Objava: Neobjavljeno.

27. Unguentarium, Fb 1605

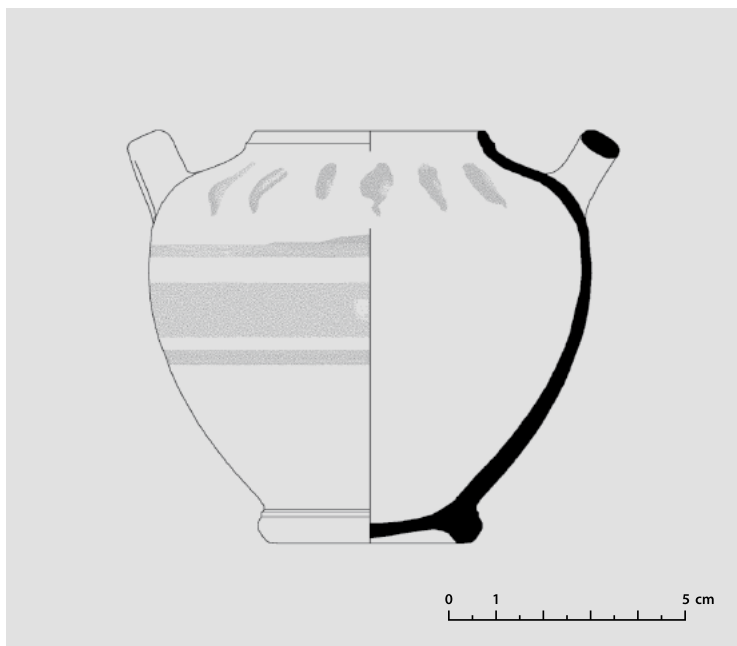
H 15.9 cm; Øbe 7 cm; Øbo 2.7 cm

Damaged, smaller part of neck and mouth missing. Clay, Munsell 2.5 Y, 8/4, black gloss to transition to foot. Belly with gently marked shoulder. Bottom flat.

Comparisons: Cambi, Kirigin, Marin 1981a, p. 69, P. XI. 6, 7; p. 70, P. XIII. 16.; Jeličić-Radonić, Rauter-Plančić 1995, p. 67, no. 17; Graepler 1994, p. 290, Fig. 221; Fozzer 1994, p. 327, Fig. 265.

Dating: Third century BC

Publication: Unpublished.



Obična fina keramika

28. Piksida (πυξίς), Fb 1595

V 8,3 cm; Øu 4,4 cm; Øt 8,7 cm; Ød 4,2 cm

Sačuvan u cijelosti, glina Munsell 10 YR, 7/6. Tijelo je blago zaobljeno, usna niska, okomito izdignuta, ručke priljubljene na ramenu pod tupim kutom. Noga niska, prstenastog oblika.

Ukras: Na ramenu okomite linije u obliku izdužene kaplje. Na tijelu tanka, potom deblja pa opet tanka vodoravna linija.

Usporedbe: Cambi, Kirigin, Marin 1981a, str. 69, T. XI. 20.

Datacija: 3. st. pr. Kr.

Objava: Kirigin 1986, str. 29, br 137.

Plain ware

28. Pyxis (πυξίς), Fb 1595

H 8.3 cm; Øm 4.4 cm; Øbe 8.7 cm; Øbo 4.2 cm

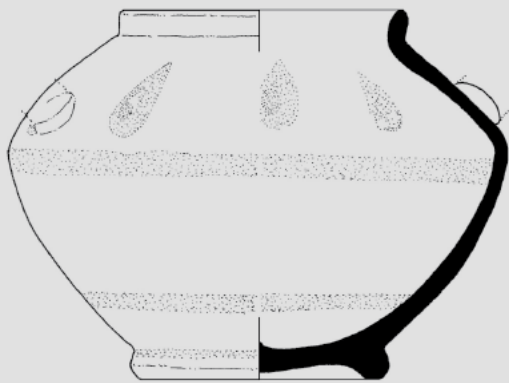
Completely preserved, clay, Munsell 10 YR, 7/6. Body gently rounded, mouth low, vertically raised, handle affixed to shoulder at obtuse angle. Foot low and ring-shaped.

Decoration: Vertical line shaped like tears on shoulder. Thin, then thicker then again thin horizontal line on body.

Comparisons: Cambi, Kirigin, Marin 1981a, p. 69, P. XI. 20.

Dating: Third century BC

Publication: Kirigin 1986, p. 29, no. 137.



29. Piksida, Fb 1593

V 8,7 cm; Øu 7,1 cm; Øt 12 cm; Ød 6,2 cm

Nedostaju obje ručke, površinski oštećena, glina Munsell 10 YR, 7/6. Koničnog oblika, s kratkom ravnom usnom, tek neznatno zaobljenom prema van. Noga prstenastog oblika.

Ukras: između ručica ukras u obliku kaplje (tri), ispod toga deblja linija. Na dnu tijela ponovno deblja linija, noga obojana. Svi ukrasi su izvedeni tamnosmeđom bojom, koja se mjestimice izgubila. Na jednoj strani pikside veliki otisak željeznog oksida.

Usporedbe: Cambi, Kirigin, Marin 1981a, str. 69, T. XI. br. 11.

Datacija: 3. st. pr. Kr.

Objava: Neobjavljeno.

29. Pyxis, Fb 1593

H 8.7 cm; Øm 7.1 cm; Øbe 12 cm; Øbo 6.2 cm

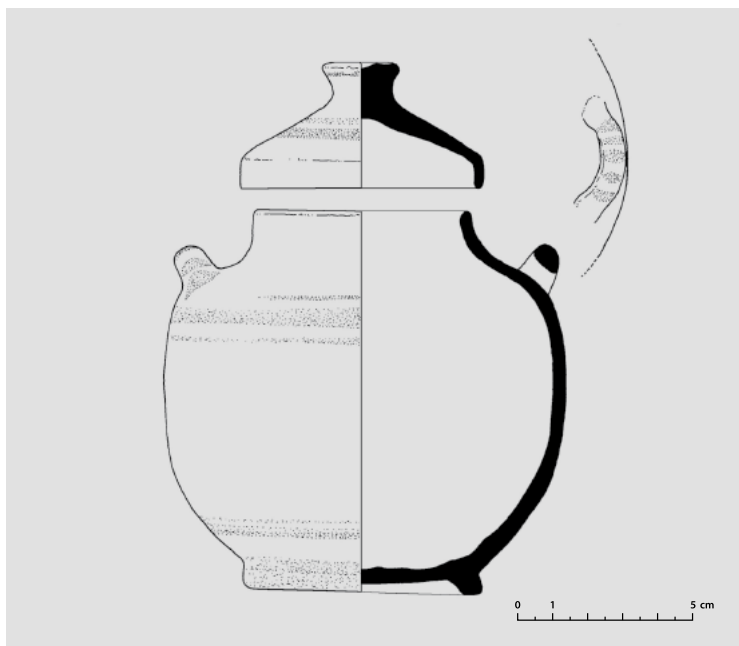
Missing both handles, surface damaged, clay, Munsell 10 YR, 7/6. Conical shape, with short straight mouth, only negligibly rounded outwardly. Foot ring-shaped.

Decoration: between small handles, tear-shaped decoration (three), thicker line below this. Thicker line again at bottom of body, foot painted. All decorations rendered with dark brown paint, which has been lost at places. Large imprint of iron oxide on one side.

Comparisons: Cambi, Kirigin, Marin 1981a, p. 69, P. XI. 11.

Dating: Third century BC

Publication: Unpublished.



30. Piksida s poklopcem, Fb 1592

V 11 cm; Øu 6,1 cm; Øt 11,5 cm; Ød 6,5 cm; poklopac, V 2,6 cm; Ø 7 cm.

Potpuno očuvan, glina Munsell 7,5 YR, 7/5. Na ramenu dvije blago zaobljene ručke, usna okomita izvučena, ravna, bez profilacije. Tijelo neznatno zaobljeno, noga prstenasta.

Ukras: jedna deblja linija između dviju tanjih na ramenu posude. Nespretno izvedene okomite crtice po ručkama, te dvije deblje linije na dnu tijela posude i na nozi. Sve linije su tamnosmeđe boje s mjestimičnim prijelazima na svjetlosmeđu.

Poklopac je koničan, potpuno sačuvan, s ručkom oblika krnjeg stošca. Po rubu ručice tamnosmeđa linija, ispod nje na površini tri tamnosmeđe linije.

Usporedbe: Cambi, Kirigin, Marin 1981a, str. 69, T. XI. br. 5; Kirigin, Marin 1985a, str. 51-52, T. IX. br. 4, 2; Kirigin 1985, str. 106, T. III. sl. 4.

Datacija: 3. st. pr. Kr.

Objava: Neobjavljeno.

30. Pyxis with lid, Fb 1592

H 11 cm; Øm 6.1 cm; Øbe 11.5 cm; Øbo 6.5 cm; lid, H 2.6 cm; Ø 7 cm.

Entirely preserved, clay, Munsell 7.5 YR, 7/5. Two gently rounded handles on shoulder, mouth vertically extended, straight, no moulding. Body negligibly round, foot ring-shaped.

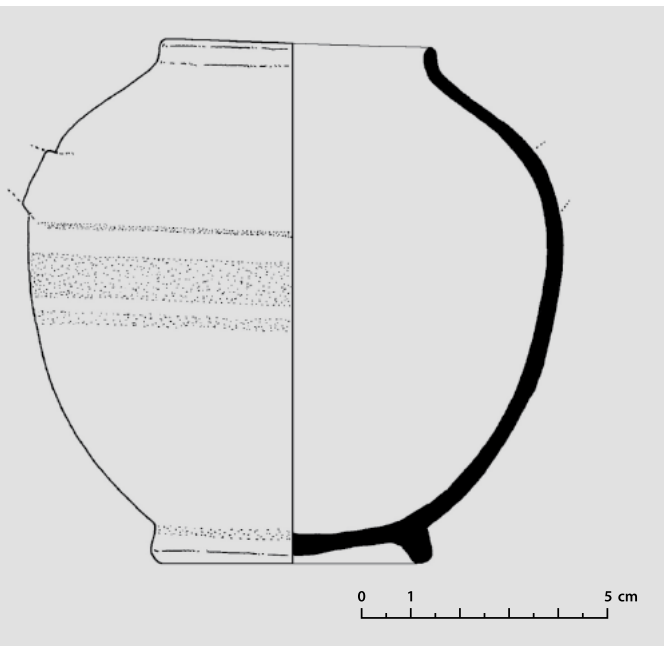
Decoration: one thick line between two thinner lines on vessel's shoulder. Clumsily rendered vertical lines on handles, and two thicker lines on bottom of vessel's body and on foot. All lines are dark brown with transition to light brown at places.

Lid is conical, entirely preserved, with handle shaped like truncated cone. Dark brown line at edge of small handle, three dark brown lines below it on surface.

Comparisons: Cambi, Kirigin, Marin 1981a, p. 69, P. XI. 5; Kirigin, Marin 1985a, pp. 51-52, P. IX. 4, 2; Kirigin 1985, p. 106, P. III. 4.

Dating: Third century BC

Publication: Unpublished.



31. Piksida, Fb 1594

V 10,8 cm; Øu 5,7 cm; Øt 10,5; Ød 5,7 cm; poklopac, V 3,8 cm; Ø 6 cm.

Ovalnog oblika, nedostaju joj obje ručke, oštećena na tijelu. Glina, Munsell 7,5 YR, 6/6. Noga prstenastog oblika.

Ukras: na tijelu ispod ručica deblja tamnosmeđa linija između dviju tanjih. Noga obojena tamnosmeđom bojom.

Usporedbe: Cambi, Kirigin, Marin 1981a, str. 69, T. XI. br. 5; Kirigin, Marin 1985a, str. 51-52, T. IX. br. 4, 2; Kirigin 1985, str. 106, T. III. sl. 4.

Datacija: 3. st. pr. Kr.

Objava: Neobjavljeno.

31. Pyxis, Fb 1594

H 10.8 cm; Øm 5.7 cm; Øbe 10.5; Øbo 5.7 cm; lid, H 3.8 cm; Ø 6 cm.

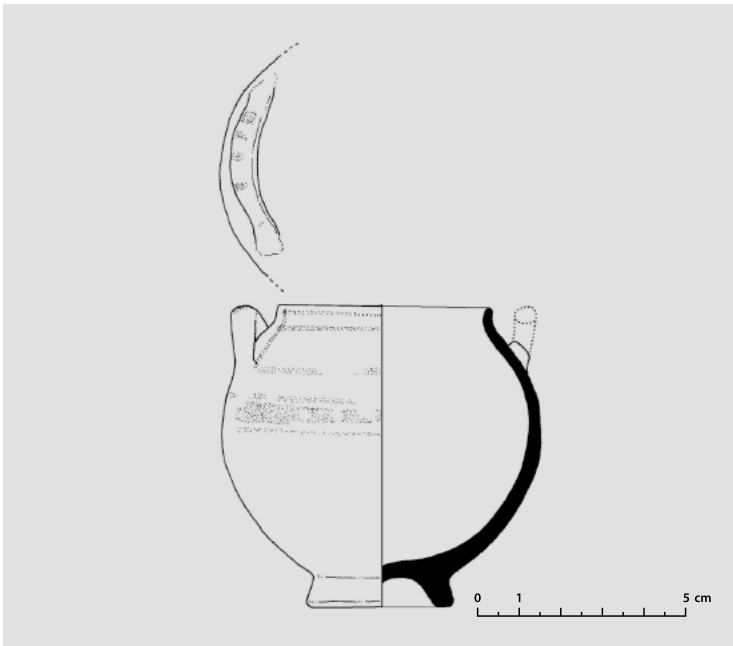
Oval shape, missing both handles, damage on body. Clay, Munsell 7.5 YR, 6/6. Foot ring-shaped.

Decoration: on body, below handle thicker dark brown line between two thinner lines. Foot painted dark brown.

Comparisons: Cambi, Kirigin, Marin 1981a, p. 69, P. XI. 5; Kirigin, Marin 1985a, pp. 51-52, P. IX. 4, 2; Kirigin 1985, p. 106, P. III. 4.

Dating: Third century BC

Publication: Unpublished.



32. Piksida, Fb 1618

V 7,2 cm; Øu 5 cm; Øt 4,9 cm; Ød 3,6 cm

Nedostaje joj jedna ručica, na jednoj strani površinski oštećena. Raspuknuta je i naknadno slijepljena, glina Munsell 7,5 YR, 7/6. Sačuvana ručka potkovičastog je oblika, na rame posude položena gotovo okomito.

Ukras: po rubu okomito uzdignute usne teku dvije smeđe narančaste linije. Na ramenu od korijena ručke nalazi se jedna linija, a na gornjem dijelu trbuha je pojas s tamnosmeđom vrpcom uokvirenom dvjema linijama iste boje kao i prethodne (kao br. 29 i 30). Sačuvana ručka ukrašena je većim točkama tamnosmeđe boje. Dno je prstenastog oblika.

Usporedbe: Cambi, Kirigin, Marin 1981a, str. 69, T. XI. 20, 5; Kirigin 1985, str. 107, T. III. sl. 4.

Datacija: 3. st. pr. Kr.

Objava: Neobjavljeno.

32. Pyxis, Fb 1618

H 7.2 cm; Øm 5 cm; Øbe 4.9 cm; Øbo 3.6 cm

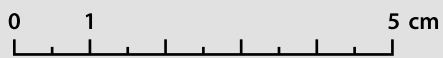
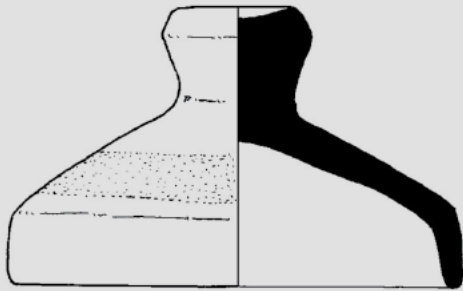
Missing one small handle, damaged on surface on one side. Cracked and subsequently glued back, Munsell 7.5 YR, 7/6 clay. Preserved handle has horseshoe shape, placed almost vertically on vessel's shoulder.

Decoration: two brown-orange lines run along edge of vertically raised mouth. One line runs along shoulder from base of handle, while on the upper part of the belly there is belt with dark-brown ribbon framed by two lines of the same colour as on the preceding example (like no. 29 and 30). Preserved handle decorated with larger dark-brown dots. Bottom ring-shaped.

Comparisons: Cambi, Kirigin, Marin 1981a, p. 69, P. XI. 20, 5; Kirigin 1985, p. 107, P. III. 4.

Dating: Third century BC

Publication: Unpublished.



33. Poklopac pikside, Fb 1609

V 3,8 cm; Ø 6 cm.

Poklopac, potpuno sačuvan, koničnog oblika, s ručkom na vrhu u obliku krnjeg stošca. Na površini ispod ručke deblja tamnosmeđa linija.

Usporedbe: Br. 30.

Datacija: 3. st. pr. Kr.

Objava: Neobjavljeno.

33. Pyxis lid, Fb 1609

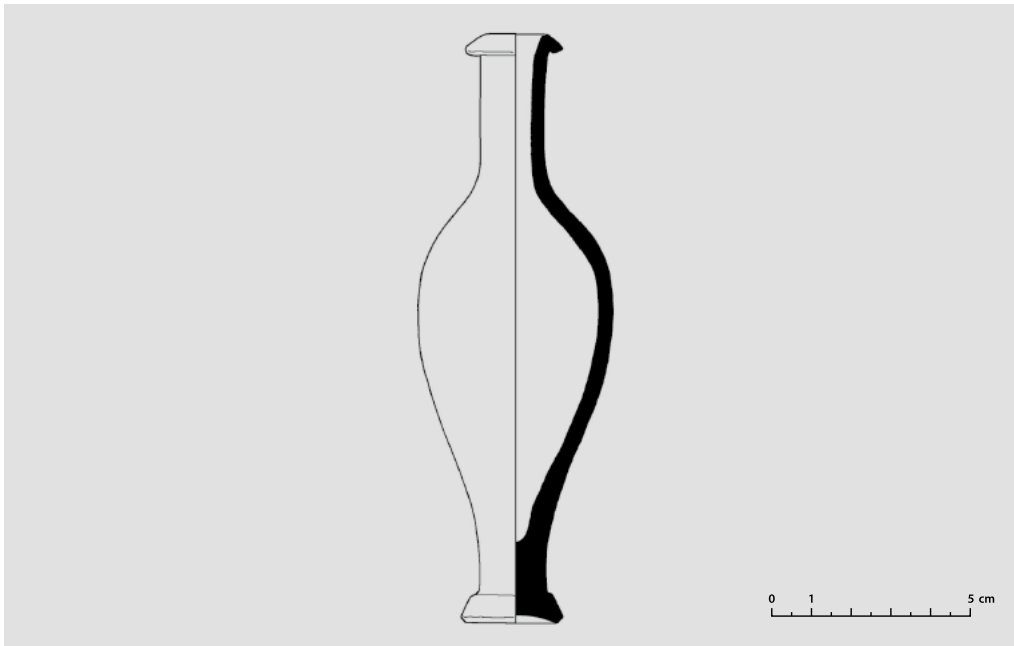
H 3.8 cm; Ø 6 cm.

Lid, entirely preserved, conical shape, with handle on top shaped like truncated cone. Thick dark brown line on surface below handle.

Comparisons: No. 30.

Dating: Third century BC

Publication: Unpublished.



34. Unguentarij, Fb 1604

V 14,7 cm; Øu 4 cm; Øt 9 cm; Ø dna 2,5 cm

Dobro sačuvan, po površini mjestimice je vidljiv spiralni otisak nastao oblikovanjem predmeta na lončarskom kolu. Glina Munsell 7,5 YR, 7/6; usna je zakošena prema dolje, dno je stožastog oblika, u stajnom dijelu malo zaobljeno.

Usporedbe: Kirigin 1985, str. 106, T. II. sl. 3., str. 107, T. III. sl. 5., str. 110, T. VI. sl. 8; Carter, Hall 1998, vol. I, str. 300, T. 85. br. 8; Lippolis 1994, str. 259.

Datacija: 3. st. pr. Kr.

Objava: Neobjavljeno.

34. Unguentarium, Fb 1604

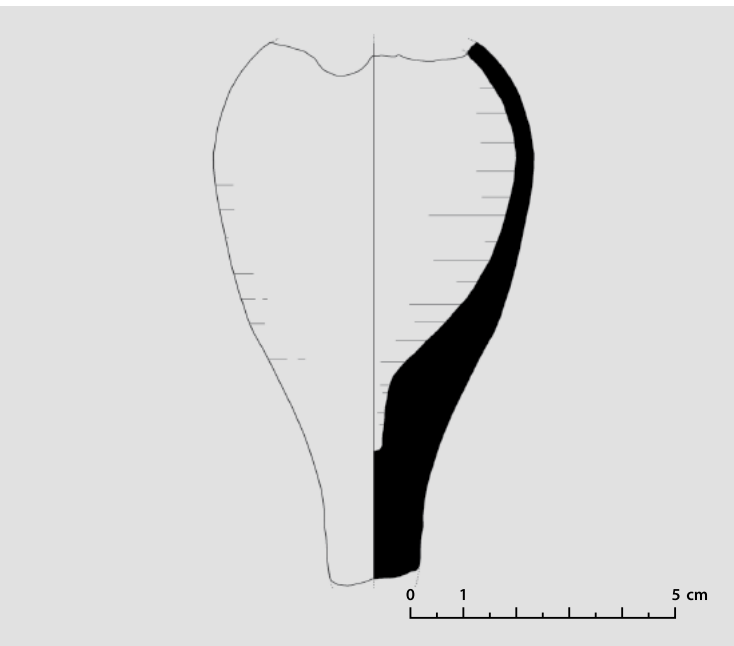
H 14.7 cm; Øm 4 cm; Øbe 9 cm; Ø bottom 2.5 cm

Well preserved, spiral impression formed by working on potter's wheel visible at places on surface. Munsell 7.5 YR, 7/6 clay; mouth slanted downward, bottom conical, slightly rounded in stationary part.

Comparisons: Kirigin 1985, p. 106, P. II. 3., p. 107, P. III. 5., p. 110, P. VI. 8; Carter, Hall 1998, vol. I, p. 300, P. 85. 8; Lippolis 1994, p. 259.

Dating: Third century BC

Publication: Unpublished.



35. Unguentarij, Fb 1612

V 10, 4 cm; Øt oko 6,4 cm

Oštećen, nedostaje čitav gornji dio i noga. Iznutra obojen u čokoladnosmeđu boju. Glina, Munsell 2,5 Y, 8/2.

Usporedbe: Cambi, Kirigin, Marin 1981a, str. 69, T. XI. br. 6, 7; str. 70, T. XIII. 16; Jeličić-Radonić, Rauter-Plančić 1995, str. 67, br. 17; Graepler 1994, str. 290, sl. 221; Fozzer 1994, str. 327, sl. 265.

Datacija: 3. st. pr. Kr.

Objava: Neobjavljeno.

35. Unguentarium, Fb 1612

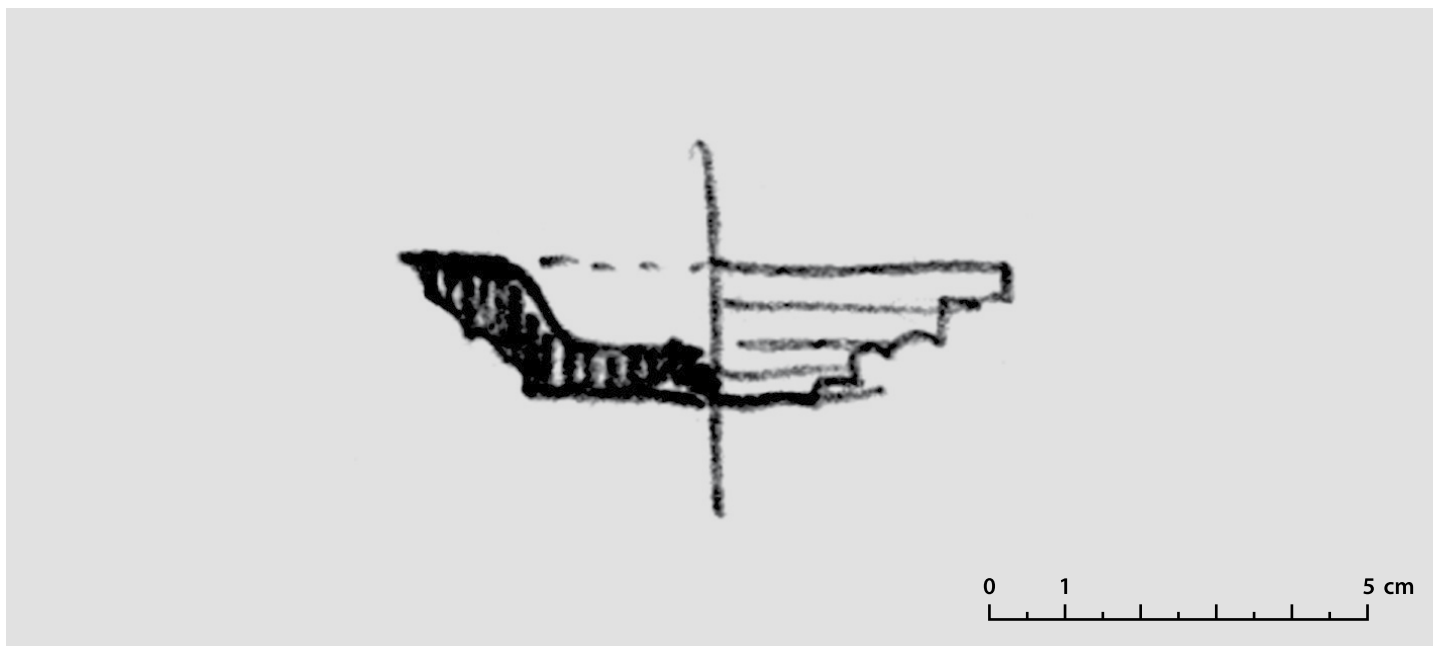
H 10.4 cm; Øbe ca 6.4

Damaged, entire upper portion and foot missing. Inside painted chocolate brown. Clay, Munsell 2,5 Y, 8/2.

Comparisons: Cambi, Kirigin, Marin 1981a, p. 69, P. XI. 6, 7; p. 70, P. XIII. 16; Jeličić-Radonić, Rauter-Plančić 1995, p. 67, no. 17; Graepler 1994, p. 290, Fig. 221; Fozzer 1994, p. 327, Fig. 265.

Dating: Third century BC

Publication: Unpublished.



36. Soljenka, Fb 1606

Øt 8 cm

(podatke preuzimam iz knjige inventara). *Mala plitica ili dno posude? Siva gruba, izvana crvenkasta glina.**Usporedbe: -**Datacija: Uvjetno 3. st. pr. Kr.**Objava: Neobjavljeno.*

36. Salt-cellar, Fb 1606

Øbe 8 cm

(data assumed from inventory log). *Small saucer or bottom of vessel? Gray coarse, outside reddish clay.**Comparisons: -**Dating: Conditionally third century BC**Publication: Unpublished.*

VIS - HELENISTIČKI GROBOVI KOD RASADNIKA PALMI*							
Br.	Predmet	Inventarni broj	Vrsta keramike / materijal	Datacija	Smještaj	Komada	%
1.	Oinohoa	Fb 1582	Gornjojadranska	Kr. 4. st. pr. Kr.	AMS-AZI	1	2,70
2.	Oinohoa	Fb 1583	Gnathia	Poč. 3. st. pr. Kr.	AMS-depo	20	54,05
3.	Oinohoa	Fb 1586	Gnathia	Poč. 3. st. pr. Kr.	AMS-depo		
4.	Oinohoa	Fb 1584	Gnathia	Poč. 3. st. pr. Kr.	AMS-depo		
5.	Oinohoa	Fb 1587	Gnathia	Poč. 3. st. pr. Kr.	AMS-depo		
6.	Oinohoa**	Fb 1615	Gnathia	Poč. 3. st. pr. Kr.	AMS-depo		
7.	Oinohoa	Fb 1585	Gnathia	3. st. pr. Kr.	AMS-depo		
8.	Oinohoa	Fb 1590	Gnathia	3. st. pr. Kr.	AMS-depo		
9.	Pelika	Fb 1610	Gnathia	Kraj 4. st. pr. Kr.	AMS-depo		
10.	Pelika	Fb 1588	Gnathia	3. st. pr. Kr.	AMS-postav		
11.	Pelika**	Fb 1614	Gnathia	3. st. pr. Kr.	AMS-depo		
12.	Pelika s pokl.	Fb 1589, Fb 1607	Gnathia	3. st. pr. Kr.	AMS-postav		
13.	Pelika**	Fb 1616	Gnathia	Prva pol. 3. st. pr. Kr.	AMS-AZI		
14.	Pelika	Fb 1591	Gnathia	Prva pol. 3. st. pr. Kr.	AMS-depo		
15.	Dno pelike	Fb 1612	Gnathia	Uvjetno kraj 4-poč. 3. st. pr. Kr.	AMS-depo		
16.	Skifos	Fb 1598	Gnathia	Prva pol. 3. st. pr. Kr.	AMS-depo		
17.	Skifos	Fb 1597	Gnathia	Prva pol. 3. st. pr. Kr.	AMS-depo		
18.	Skifos	Fb 1601	Gnathia	Prva pol. 3. st. pr. Kr.	AMS-depo		
19.	Skifos	Fb 1611	Gnathia	Prva pol. 3. st. pr. Kr.	AMS-depo		
20.	Skifos	Fb 1599	Gnathia	3. st. pr. Kr.	AMS-depo		
21.	Skifos	Fb 1600	Gnathia	3. st. pr. Kr.	AMS-depo		
22.	Skifos**	Fb 1613	Crno premazana	Zadnja treć. 3. st. pr. Kr.	AMS-depo	6	16,22
23.	Skifos	Fb 1602	Crno premazana	Zadnja treć. 3. st. pr. Kr.	AMS-depo		
24.	Skifos	Fb 1603	Crno premazana	3. st. pr. Kr.	AMS-depo		
25.	Skifos	Fb 1596	Crno premazana	3. st. pr. Kr.	AMS-depo		
26.	Vrčić**	Fb 1617	Crno premazana	Poč. 3. st. pr. Kr.	AMS-depo		
27.	Unguentarij	Fb 1605	Crno premazana	3. st. pr. Kr.	AMS-depo		
28.	Piksida	Fb 1595	Obična fina keramika	3. st. pr. Kr.	AMS-AZI	9	24,33
29.	Piksida	Fb 1593	Obična fina keramika	3. st. pr. Kr.	AMS-depo		
30.	Piksida s pokl.	Fb 1592	Obična fina keramika	3. st. pr. Kr.	AMS-depo		
31.	Piksida	Fb 1594	Obična fina keramika	3. st. pr. Kr.	AMS-depo		
32.	Piksida**	Fb 1618	Obična fina keramika	3. st. pr. Kr.	AMS-depo		
33.	Poklopac pikside	Fb 1609	Obična fina keramika	3. st. pr. Kr.	AMS-depo		
34.	Unguentarij	Fb 1604	Obična fina keramika	3. st. pr. Kr.	AMS-depo		
35.	Unguentarij	Fb 1612	Obična fina keramika	3. st. pr. Kr.	AMS-depo		
36.	Soljenka	Fb 1606	Obična fina keramika	Uvjetno 3. st. pr. Kr.	AMS-depo?		
37.	Strigil	-	Željezo	Uvjetno 3. st. pr. Kr.	-		
UKUPNO						37	100

Predmet	Oinohoa	Pelika	Skifos	Piksida i poklopac pikside	Vrčić	Unguentarij	Soljenka	Strigil	Ukupno
Komada	8	7	10	6	1	3	1	1	37
%	21,62	18,92	27,03	16,22	2,70	8,11	2,70	2,70	100 %

* Kratice: AMS - Arheološki muzej - Split; AZI - Arheološka zbirka 'Issa' (područna arheološka zbirka splitskog Arheološkog muzeja)

** Nije sasvim sigurno jesu li predmeti pronađeni u grobovima kod rasadnika palmi.

VIS - HELLENISTIC GRAVES AT PALM NURSERY*							
No.	Item	Inventory number	Pottery type / material	Dating	Current location	Pieces	%
1.	Oenochoe	Fb 1582	Upper Adriatic	End of 4 th cent. BC	AMS-IAC	1	2.7
2.	Oenochoe	Fb 1583	Gnathian	Beg. 3 rd cent. BC	AMS-depot	20	54.05
3.	Oenochoe	Fb 1586	Gnathian	Beg. 3 rd cent. BC	AMS-depot		
4.	Oenochoe	Fb 1584	Gnathian	Beg. 3 rd cent. BC	AMS-depot		
5.	Oenochoe	Fb 1587	Gnathian	Beg. 3 rd cent. BC	AMS-depot		
6.	Oenochoe**	Fb 1615	Gnathian	Beg. 3 rd cent. BC	AMS-depot		
7.	Oenochoe	Fb 1585	Gnathian	3 rd century BC	AMS-depot		
8.	Oenochoe	Fb 1590	Gnathian	3 rd century BC	AMS-depot		
9.	Pelike	Fb 1610	Gnathian	End of 4 th century BC	AMS-depot		
10.	Pelike	Fb 1588	Gnathian	3 rd century BC	AMS-exhibit		
11.	Pelike**	Fb 1614	Gnathian	3 rd century BC	AMS-depot		
12.	Pelike w/ lid	Fb 1589, Fb 1607	Gnathian	3 rd century BC	AMS-exhibit		
13.	Pelike**	Fb 1616	Gnathian	1 st half 3 rd century BC	AMS-AZI		
14.	Pelike	Fb 1591	Gnathian	1 st half 3 rd century BC	AMS-depot		
15.	Pelike bottom	Fb 1612	Gnathian	Conditionally end of 4 th cent. BC, Beg. 3 rd cent. BC	AMS-depot		
16.	Skyphos	Fb 1598	Gnathian	1 st half 3 rd century BC	AMS-depot		
17.	Skyphos	Fb 1597	Gnathian	1 st half 3 rd century BC	AMS-depot		
18.	Skyphos	Fb 1601	Gnathian	1 st half 3 rd century BC	AMS-depot		
19.	Skyphos	Fb 1611	Gnathian	1 st half 3 rd century BC	AMS-depot		
20.	Skyphos	Fb 1599	Gnathian	3 rd century BC	AMS-depot		
21.	Skyphos	Fb 1600	Gnathian	3 rd century BC	AMS-depot		
22.	Skyphos**	Fb 1613	Black gloss	Last third of 3 rd cent. BC	AMS-depot	6	16.22
23.	Skyphos	Fb 1602	Black gloss	Last third of 3 rd cent. BC	AMS-depot		
24.	Skyphos	Fb 1603	Black gloss	3 rd century BC	AMS-depot		
25.	Skyphos	Fb 1596	Black gloss	3. st. pr. Kr.	AMS-depot		
26.	Juglet**	Fb 1617	Black gloss	Beg. 3 rd century BC	AMS-depot		
27.	Unguentarium	Fb 1605	Black gloss	3 rd century BC	AMS-depot		
28.	Pyxis	Fb 1595	Plain ware	3 rd century BC	AMS-AZI	9	24.33
29.	Pyxis	Fb 1593	Plain ware	3 rd century BC	AMS-depot		
30.	Pyxis w/ lid	Fb 1592	Plain ware	3 rd century BC	AMS-depot		
31.	Pyxis	Fb 1594	Plain ware	3 rd century BC	AMS-depot		
32.	Pyxis **	Fb 1618	Plain ware	3 rd century BC	AMS-depot		
33.	Pyxis lid	Fb 1609	Plain ware	3 rd century BC	AMS-depot		
34.	Unguentarium	Fb 1604	Plain ware	3 rd century BC	AMS-depot		
35.	Unguentarium	Fb 1612	Plain ware	3 rd century BC	AMS-depot		
36.	Salt-cellar	Fb 1606	Plain ware	Conditionally 3 rd cent. BC	AMS-depot?		
37.	Strigil	-	Iron	Conditionally 3 rd cent. BC	-		
TOTAL						37	100

Item	Oenochoe	Pelike	Skyphos	Pyxis and pyxis lid	Juglet	Unguentarium	Salt-cellar	Strigil	Total
Piece	8	7	10	6	1	3	1	1	37
%	21.62	18.92	27.03	16.22	2.7	8.11	2.7	2.7	100

* Abbreviations: AMS - Archaeological Museum in Split; IAC - Issa Archaeological Collection (regional archaeological collection of the Archaeological Museum in Split)

** Not entirely certain if items found in palm nursery.

Kratice / Abbreviations

Chora Metaponto - The chora of Metaponto. The necropoleis, vol. I, II, ed. J. C. Carter, Austin 1998

Ljetopis JAZU - Ljetopis Jugoslavenske akademije znanosti i umjetnosti, Zagreb

Materijali SADJ - Materijali Saveza arheoloških društava Jugoslavije, Beograd

StAnt - Studi di antichità, Taranto

Taranto la necropoli - Catalogo del museo Nazionale archeologico di Taranto, III, 1, Taranto la necropoli: aspetti e problemi della documentazione archeologica tra VII e I sec. a. C. A cura di Enzo Lippolis, Taranto 1994.

VAHD - Vjesnik za arheologiju i historiju dalmatinsku, Split

VAPD - Vjesnik za arheologiju i povijest dalmatinsku, Split

Literatura / References

Abramić 1949
M. Abramić, *Arheološka istraživanja grčke kolonije Isa na otoku Visu*, Ljetopis JAZU 55, Zagreb 1949, 9-17.

Bakhuizen 1992
S. C. Bakhuizen 1992, *A Greek city of the fourth century B. C.*, by the Goritsa team, S. C. Bakhuizen co-ordinator, Roma 1992.

Bernardini 1961
M. Bernardini, *Vasi dello stile di Gnathian, vasi a vernice nera*, Bari 1961.

Bonomi 1997
S. Bonomi, *I vasi alto-adriatici di Spina*, Classico Anticlassico, Vasi alto-adriatici tra Piceno, Spina e Adria, F. Berti, S. Bonomi, M. Landolfi, (us.), Ancona 1997.

Cambi, Kirigin, Marin, 1981a
N. Cambi, B. Kirigin, E. Marin, *Zaštitna arheološka istraživanja helenističke nekropole Isse (1976. i 1979. god.) - preliminarni izvještaj*, VAHD 75, Split 1981, 63-83.

Cambi, Kirigin, Marin 1981b
N. Cambi, B. Kirigin, E. Marin, *Excavations at Issa, Island of Vis, Yugoslavia 1976, 1979 - A preliminary Report*, Rivista di archeologia IV, Venezia 1981, 83-86.

Carter 1998
J. C. Carter, *Burial Rites and Grave Types*, u: *Chora Metaponto*, Austin 1998, 57-114.

Carter, Hall 1998
J. C. Carter, J. Hall, *Burial Descriptions*, u: *Chora Metaponto*, Austin 1998, 237-447.

Clark, Elston, Hart 2000
A. J. Clark, M. Elston, M. L. Hart, *Understanding Greek vases: a guide to terms, styles, and techniques*, Los Angeles 2000.

Čače, Šešelj 2005
S. Čače, L. Šešelj, *Finds from the Diomedes' sanctuary on the Cape of Ploča: New contributions to the discussion about the hellenistic period on the East Adriatic*, u: *Illyrica antiqua*, ob honorem Duje Rendić-Miočević, Zagreb 2005.

Čargo 2007
B. Čargo, *Grčko-helenistička keramika u Arheološkom muzeju u Splitu*, Split 2007.

D'Amicis 1994
A. D'Amicis, *I sistemi rituali: l'incinerazione*, u: *Taranto la necropoli*, Taranto 1994, 149-173.

Delli Ponti 1996
G. Delli Ponti, *Vaste - Pogiardo (LE). La necropoli di Fondo Aia*, StAnt 9, Lecce 1996, 99-214.

Elliott 1998
M. Elliott, *Black-glazed Pottery*, u: *Chora Metaponto*, Austin 1998, 643-694.

Edwards 1975
G. R. Edwards, *Corinthian Hellenistic pottery*, Corint VII / III, Princeton, New Jersey 1975.

Fozzer 1994
S. Fozzer, *La ceramica sovraddipinta e la documentazione della necropoli di Taranto*, u: *Taranto la necropoli*, Taranto 1994, 325-334.

Giannotta 1996
M. T. Giannotta, *Rinvenimenti graveali da Rocavecchia (1934) al museo provinciale di Lecce: materiali di corredo e produzioni*, StAnt 9, Lecce 1996, 37-98.

Graepler 1994
D. Graepler, *Corredi funerari con terrecotte figurate*, u: *Taranto la necropoli*, Taranto 1994, 283-299.

Green 1971
J. R. Green, *Gnathian addenda*, Institute of Classical Studies, Bulletin 18, London 1971, 30-38.

Hall 1998
J. Hall, *Grave goods*, u: *Chora Metaponto*, Austin 1998, 563-590.

Hempel 2001
K. G. Hempel, *Die Nekropole von Tarent im 2. und 1. Jahrhundert v. Chr. Studien zur materiellen Kultur*, (La necropoli di Taranto nel II e I sec. a. C. Studi sulla cultura materiale), Taranto 2001.

Jeličić-Radonić, Rauter-Plančić 1995
J. Jeličić-Radonić, B. Rauter-Plančić, *Pharos-antički Stari Grad, u povodu 2380. obljetnice utemeljenja*, (katalog izložbe), Zagreb 1995.

Kirigin 1979
B. Kirigin, *Tri teatarske maske na Gnathia vazama iz Visa*, u: *Antički teatar na tlu Jugoslavije*, Novi Sad 1979.

Kirigin 1985
B. Kirigin, *Zapažanja o helenističkoj nekropoli Isse*, Materijali SADJ 20, Beograd 1985, 91-110.

Kirigin 1986
B. Kirigin, *Issa, otok Vis u helenizmu*, (katalog izložbe), Ljubljana 1986.

Kirigin 1990a
B. Kirigin, *Late Gnathian: a glimpse at the Issa case*, ANATYΠO, AΠO TA ΠPAKTIKA TNS B' ΣNANTHΣHΣ ΓIA TEN EΛΛENICTIKI KEPAMEIKI, AΘHNA 1990, 58-65.

- Kirigin 1990b
B. Kirigin, *The Greeks in Central Dalmatia: Some New Evidence, u: Greek Colonists and Native Populations*, J. P. Descoedres (us.), Oxford 1990, 303-315.
- Kirigin 1992
B. Kirigin, *Vaze tipa "Alto-adriatico" iz Isse*, Prilozi povijesti umjetnosti u Dalmaciji 32, Split 1992, 79-98.
- Kirigin 1996
B. Kirigin, *Issa. Grčki grad na Jadranu*, Zagreb 1996.
- Kirigin 1997
B. Kirigin, *Alto-Adriatico vases from Dalmatia*, u: *Adriatico tra IV e III sec. A.C. Vasi Alto-Adriatici tra Piceno, Spina e Adria*, M. Landolfi (us.), Roma 1997, 131-138.
- Kirigin 2004
B. Kirigin, *Faros, parska naseobina. Prilog proučavanju grčke civilizacije u Dalmaciji*, VAHD 96, Split 2004, 9-301.
- Kirigin, Marin 1985a
B. Kirigin, E. Marin, *ISSA '80. Preliminarni izvještaj sa zaštitnih arheoloških iskopavanja helenističke nekropole Martvilo u Visu. Novi i neobjelodanjeni natpisi iz Visa*, VAHD 78, Split 1985, 45-72.
- Kirigin, Marin 1985b
B. Kirigin, E. Marin, *Excavations at Issa, Island of Vis (YU) 1980, a preliminary report*, StAnt 5, Lecce 1988, 129-147.
- Kirigin, Hayes, Leach 2002
B. Kirigin, J. W. Hayes, P. Leach, *Local pottery production at Pharos, u: Grčki utjecaj na istočnoj obali Jadrana*, Split 2002, 241-260.
- Kirigin, Katunarić, Šešelj 2005
B. Kirigin, T. Katunarić, L. Šešelj, *Amfore i fina keramika (od 4. do 1. st. pr. Kr.) iz srednje Dalmacije: preliminarni ekonomski i socijalni pokazatelji*, VAPD 98, Split 2005, 7-24.
- Kirigin, Katunarić, Šešelj 2006
B. Kirigin, T. Katunarić, L. Šešelj, *Preliminary notes on some economic and social aspects of amphorae and fine ware pottery from Central Dalmatia, 4th - 1st BC*, u: *Rimini e l'Adriatico nell' età dell' guerre puniche*, F. Lenzi (ed.), Bologna 2006., 191-225.
- Kirigin et alii 2006
B. Kirigin, N. Vujnović, S. Čače, V. Gaffney, T. Podobnikar, Z. Stančić and J. Burmaz, *The Archaeological Heritage of Vis, Biševo, Svetac, Palagruža and Šolta*, BAR International Series 1492, Oxford 2006.
- Kušan-Špalj, Rendić-Miočević 2006
D. Kušan-Špalj, A. Rendić-Miočević, *Najljepše grčke vaze iz riznice Arheološkog muzeja u Zagrebu*, Zagreb 2006.
- Lamboley 1996
J. L. Lamboley, *Vaste (Lecce). La porte est et la gravee Pizzinaghe*, StAnt 9, Lecce 1996, 361-430.
- Lanza 2005
E. Lanza, *Ceramica di Gnathian al museo di antichità di Torino*, Mantova 2005.
- Lippolis 1994
E. Lippolis, *La necropoli ellenistica: problemi di classificazione e cronologia dei materiali*, u: *Taranto la necropoli*, Taranto 1994, 239-281.
- Lisičar 1950
P. Lisičar, *O prehistorijskim i grčkim vazama nađenim u Dalmaciji*, VAHD LII (1935-1949), Split 1950, 35-49.
- Lisičar 1973
P. Lisičar, *Cenni sulla ceramica antica*, Archeologica Iugoslavica XIV, Beograd 1973, 3-27.
- Mano 1971
A. Mano, *Nekropoli i Apollonisë - Tuma 1: (Gërmime të viteve 1958 - 1959)*, Iliria I, Tiranë 1971, 103-207.
- Marović 1980
I. Marović, *Prahistorijska istraživanja u okolici Narone*, Izdanja Hrvatskog arheološkog društva 5, Split 1980, 45-104.
- Marović, Nikolanci 1977
I. Marović, M. Nikolanci, *Četiri groba iz nekropole u Vičoj Luci (o. Brač), pronađena 1908. god.*, VAHD LXX-LXXI (1968-1969), Split 1977, 5-55.
- Maruggi 1994
G. A. Maruggi, *La tipologia delle tombe*, u: *Taranto la necropoli*, Taranto 1994, 69-106.
- Melissano 1995
V. Melissano, *Nuovi dati sulla topografia di Vaste*, StAnt 8,1, Lecce 1995, 229-225.
- Miše 2005
M. Miše, *Grčka i helenistička keramika iz Farosa u Arheološkom muzeju u Splitu (stari fond)*, VAPD 98, Split 2005, 25-48.
- Morel 1981
J.-P. Morel, *Céramique campanienne: les formes, (texte - plaches)*, Roma 1981.
- Nikolanci 1954
M. Nikolanci, *Novi antikni nalazi u Visu i Splitu*, VAHD LIV, Split 1954, 189-196.
- Nikolanci 1969
M. Nikolanci, *Helenistička nekropola Isse*, VAHD LXIII-LXIV (1961-1962), Split 1969, 57- 90.
- Parović-Pešikan 1986
M. Parović-Pešikan, *Grčko-italske i helenističke vaze iz Zemaljskog muzeja u Sarajevu*, Glasnik Zemaljskog muzeja Bosne i Hercegovine u Sarajevu 40-41, Sarajevo 1986, 39-60.
- Pianu 1990
G. Pianu, *La necropoli meridionale di Eraclea 1: le tombe di secolo IV e III a. C.*, Roma 1990.
- Prag 1992
A. J. N. W. Prag, *Black glaze ware: Introduction - Catalogue*, u: *An Iron Age and Roman Republican Settlement on Botromagno, Gravina di Puglia. Excavations of 1965 - 1974*. Vol. II, The Artefacts, A. Small (us.), London 1992, 67-134.
- Prohászka 1998
M. Prohászka 1998, *Metal Objects and Coins*, u: *Chora Metaponto*, Austin 1998, 787-834.
- Puritani 2002
L. Puritani, *Problemi di classificazione e di datazione della cosiddetta "ceramica di Gnathian"*, Archeologia classica n. s. 3, LIII, Roma 2002, 379-403.
- Rossi, van der Wielen-van Ommeren 1983
L. Rossi, F. van der Wielen-van Ommeren, *Canosa II*, Bari 1983.
- Scattarella, De Lucia 1984
V. Scattarella, A. De Lucia, *Alcuni rinvenimenti graveali a Bitetto (Bari)*, Taras IV, 1 - 2, Taranto 1984, 175-195.

Starinska iznašašća 1895

*Starinska iznašašća u Starigradu
na otoku Hvaru (Pharos),
Bullettino di archeologia e storia
dalmata* 18, Spalato 1895, 70-72.

Vallicelli 2006

M. C. Vallicelli, *Un gruppo
di ceramiche sovraddipinte
di tipo Gnathian dell museo
archeologico nazionale
di Venezia: considerazioni
preliminari*, u: *Tra Oriente e
Occidente*, D. Morandi
Bonacossi, E. Rova, F. Veronese,
P. Zanovello (us.), Padova 2006,
247-261.

Webster 1968

T. B. L. Webster, *Towards
a Classification of Apulian
Gnathian*, Institute of Classical
studies, Bulletin 15, London
1968, 1-33.