

UDK 902
ISSN 1330-0644
Vol. 42/2
ZAGREB, 2025.

PRILOZI

Instituta za arheologiju u Zagrebu

Pril. Inst. arheol. Zagrebu
Str./Pages 1-148, Zagreb, 2025.

**PRILOZI INSTITUTA ZA ARHEOLOGIJU
U ZAGREBU, 42/2/2025
STR./PAGES 1–148, ZAGREB, 2025.**

Izdavač / Publisher
INSTITUT ZA ARHEOLOGIJU
INSTITUTE OF ARCHAEOLOGY

Adresa uredništva /
Address of the editor's office
Institut za arheologiju / Institute of archaeology
HR-10000 Zagreb, Jurjevska ulica 15
Hrvatska / Croatia
Telefon / Phone ++385 / (0)1 61 50 250
Fax ++385(0)1 60 55 806
e-mail: urednistvo.prilozi@iarh.hr
<http://www.iarh.hr>

Glavni i odgovorni urednik / Editor in chief
Marko DIZDAR

Tehnički urednici / Technical editors
Marko DIZDAR
Katarina BOTIĆ

Uredništvo / Editorial board
Prapovijest / Prehistory:
Marko DIZDAR, Institut za arheologiju, Zagreb,
Hrvatska
Snježana VRDOLJAK, Institut za arheologiju, Zagreb,
Hrvatska
Viktória KISS, ELTE RCH Institute of Archaeology,
Budapest, Hungary
Antika / Antiquities:
Goranka LIPOVAC VRKLJAN, Institut za arheologiju,
Zagreb, Hrvatska
Ivan RADMAN-LIVAJA, Arheološki muzej u Zagrebu,
Zagreb, Hrvatska
Srednji vijek i novi vijek / Middle Ages and Modern era:
Tajana SEKELJ IVANČAN, Institut za arheologiju,
Zagreb, Hrvatska
Katarina Katja PREDOVNIK, University of Ljubljana,
Faculty of Arts, Ljubljana, Slovenia
Natascha MEHLER, Eberhard Karls University of
Tübingen, Tübingen, Germany
Tatjana TKALČEC, Institut za arheologiju, Zagreb,
Hrvatska
Juraj BELAJ, Institut za arheologiju, Zagreb, Hrvatska
Metodologija / Methodology
Predrag NOVAKOVIĆ, University of Ljubljana, Faculty
of Arts, Ljubljana, Slovenia

Izdavački savjet / Editorial advisory board
Dunja GLOGOVIĆ, Zagreb, Hrvatska
Ivor KARAVANIĆ, Sveučilište u Zagrebu, Filozofski
fakultet, Odsjek za arheologiju, Zagreb, Hrvatska
Kornelija MINICHREITER, Zagreb, Hrvatska
Alexander T. RUTTKAY, Nitra, Slovakia
Ivančica SCHRUNK, University of St. Thomas, St. Paul,
Minnesota, USA
Željko TOMIČIĆ, Hrvatska Akademija znanosti i
umjetnosti, Zagreb, Hrvatska
Ante UGLEŠIĆ, Sveučilište u Zadru, Odjel za
arheologiju, Zadar, Hrvatska

Prijevod na engleski / English translation
Pio DOMINES PETER, Mario GAVRANOVIĆ,
Tamara LEVAK POTREBICA, Marko MARAS,
Marina UGARKOVIĆ

Lektura / Language editor
Marko DIZDAR, Katarina BOTIĆ (hrvatski jezik /
Croatian)
Tamara LEVAK POTREBICA, Marko MARAS (engleski
jezik / English)

Korektura / Proofreads
Katarina BOTIĆ

Grafičko oblikovanje / Graphic design
Umjetnička organizacija OAZA

Računalni slog / Layout
Hrvoje JAMBREK

Tisak / Printed by
Tiskara Zelina d.d., Sveti Ivan Zelina

Naklada / Issued
400 primjeraka / 400 copies

Prilozi Instituta za arheologiju u Zagrebu indeksirani su u /
Prilozi Instituta za arheologiju u Zagrebu are indexed by:
DYABOLA – Sachkatalog der Bibliothek – Römisch-
Germanische Kommission des Deutschen
Archaeologischen Instituts, Frankfurt a. Main
Clarivate Analytics services – Web of Science Core
Collection
CNRS / INIST – Centre National de la Recherche
Scientifi que / L'Institut de l'Information Scientifi que et
Technique, Vandoeuvre-lès-Nancy
EBSCO – Information services, Ipswich
ERIH PLUS – European Reference Index for the
Humanities and Social Sciences, Norwegian
Directorate for Higher Education and Skills, Bergen
SciVerse Scopus – Elsevier, Amsterdam

E-izdanja. Publikacija je dostupna u digitalnom obliku i
otvorenom pristupu na
<https://hrcak.srce.hr/prilozi-iaz>
E-edition. The publication is available in digital and
open access form at
<https://hrcak.srce.hr/prilozi-iaz?lang=en>

DOI 10.33254

Ovaj rad licenciran je pod Creative Commons
Attribution By 4.0 međunarodnom licencom /
This work is licenced under a Creative Commons
attribution By 4.0 international licence
<https://creativecommons.org/licenses/by/4.0/>



SADRŽAJ

CONTENTS

	Izvorni znanstveni radovi	Original scientific papers
5	MARIO GAVRANOVIĆ DŽENAN BRIGIĆ Ostava metalnih predmeta s kraja brončanoga i početka željeznoga doba iz Markovišta, Husino kod Tuzle	MARIO GAVRANOVIĆ DŽENAN BRIGIĆ Hoard of metal objects from the Late Bronze Age and the beginning of the Early Iron Age at Markovište, Husino near Tuzla
35	DARIA LOŽNJAK DIZDAR IVAN DRNIĆ PETRA RAJIĆ ŠIKANJIĆ Prapovijesno groblje daljske grupe Vukovar Lijeva Bara – Paljevinski grobovi Ž27, Ž75, Ž79, Ž80 i Ž92	DARIA LOŽNJAK DIZDAR IVAN DRNIĆ PETRA RAJIĆ ŠIKANJIĆ The Prehistoric cemetery of the Dalj Group at Vukovar Lijeva Bara – Cremation graves Ž27, Ž75, Ž79, Ž80, and Ž92
81	JANJA MAVROVIĆ MOKOS HRVOJE POTREBICA Višeglave igle u nošnji istočnoga halštatskoga kruga	JANJA MAVROVIĆ MOKOS HRVOJE POTREBICA Multi-headed pins in the Eastern Hallstatt attire
	Prethodno priopćenje	Preliminary report
113	MARINA UGARKOVIĆ PIO DOMINES PETER Novi oblici u isejskoj geometriji smrti: prvi podaci s istraživanja nekropole Vlaška njiva (2022. – 2024.)	MARINA UGARKOVIĆ PIO DOMINES PETER New shapes in Issa's geometry of death: first data from excavations at the Vlaška Njiva necropolis (2022–2024)
141	Upute autorima	Guidelines for contributors

PRAPOVIJESNO GROBLJE DALJSKE GRUPE VUKOVAR LIJEVA BARA – PALJEVINSKI GROBOVI Ž27, Ž75, Ž79, Ž80 I Ž92 THE PREHISTORIC CEMETERY OF THE DALJ GROUP AT VUKOVAR LIJEVA BARA – CREMATION GRAVES Ž27, Ž75, Ž79, Ž80, AND Ž92

Izvorni znanstveni rad / prapovijesna arheologija
Original scientific paper / Prehistoric archaeology
UDK UDC 903.5(497.5 Vukovar)

Primljeno / Received: 08. 09. 2025. Prihvaćeno / Accepted: 08. 12. 2025.

doi.org/10.33254/piaz.42.2.2

DARIA LOŽNJAK DIZDAR

Institut za arheologiju
Jurjevska ulica 15
HR-10000 Zagreb
dldizdar@iarh.hr
ORCID 0000-0002-5769-2269

IVAN DRNIĆ

Arheološki muzej u Zagrebu
Trg Nikole Šubića Zrinskog 19, P. P. 28
HR-10000 Zagreb
idrnic@amz.hr

PETRA RAJIĆ ŠIKANJIĆ

Institut za antropologiju
Ulica Ljudevita Gaja 32
HR-10000 Zagreb
petra.rajic.sikanjic@inantro.hr
ORCID 0000-0002-7760-5193

U radu se predstavlja bioarheološka analiza pet paljevinskih grobova iz prapovijesnoga groblja Vukovar Lijeva Bara koji pripadaju daljskoj grupi kasnoga brončanog i starijega željeznog doba rasprostranjenoj u srednjem Podunavlju. Grobovi se datiraju u II keramički horizont, odnosno prema rezultatima radiokarbonskoga datiranja spaljenih ostataka pokojnika u 9. st. pr. Kr. Keramički ansambli su lokalne produkcije, dok željezni nalazi fibule, perli i pršljena usporedbe imaju u istočnome dijelu Karpatske kotline, donjem Podunavlju i na jugoistočnome Balkanu. Izdvaja se nalaz željezne dvopetljaste fibule s trokutastom širokom nožicom iz groba Ž75 koja na luku ima tri dugmeta ukrašena vodoravnim urezima koji su ispunjeni bakrenom slitinom. Usporedbe za fibulu zabilježene su na prostoru donjega Podunavlja i jedan je od za sada najranijih nalaza željeznih predmeta na nalazištima daljske grupe.

KLJUČNE RIJEČI: kasno brončano doba, starije željezno doba, Podunavlje, Vukovar, groblje, daljska grupa, keramika, fibula, kontakti



Copyright © Autori
The Authors 2025

Open Access This work is distributed under the terms and conditions of the Creative Commons Attribution 4.0 International license (<https://creativecommons.org/licenses/by/4.0/>) which permits unrestricted re-use, distribution, and reproduction in any medium, provided the original work is properly cited.
Open Access Ovaj rad dijeli se prema odredbama i uvjetima licence Creative Commons Attribution 4.0 International license (<https://creativecommons.org/licenses/by/4.0/>), koja dopušta neograničenu ponovnu upotrebu, dijeljenje i reprodukciju u bilo kojem mediju, pod uvjetom da je izvorno djelo ispravno citirano.

This paper presents a bioarchaeological analysis of five cremation graves from the prehistoric cemetery of Vukovar Lijeva Bara, which belongs to the Dalj group of the Late Bronze Age and Early Iron Age, distributed across the Middle Danube region. The graves are dated to ceramic horizon II, or specifically to the 9th century BC, based on radiocarbon dating results for the cremated human remains. The pottery assemblages were locally produced, whereas the iron finds – a fibula, beads, and a whorl – show parallels with the eastern Carpathian Basin, the Lower Danube region, and the southeastern Balkans. Of particular note is the find of an iron double-loop fibula with a broad triangular foot from grave Ž75, featuring three knobs on the bow decorated with horizontal incisions inlaid with copper alloy. Parallels for this fibula have been recorded in the Lower Danube region; it is currently one of the earliest known iron artefacts from Dalj group sites.

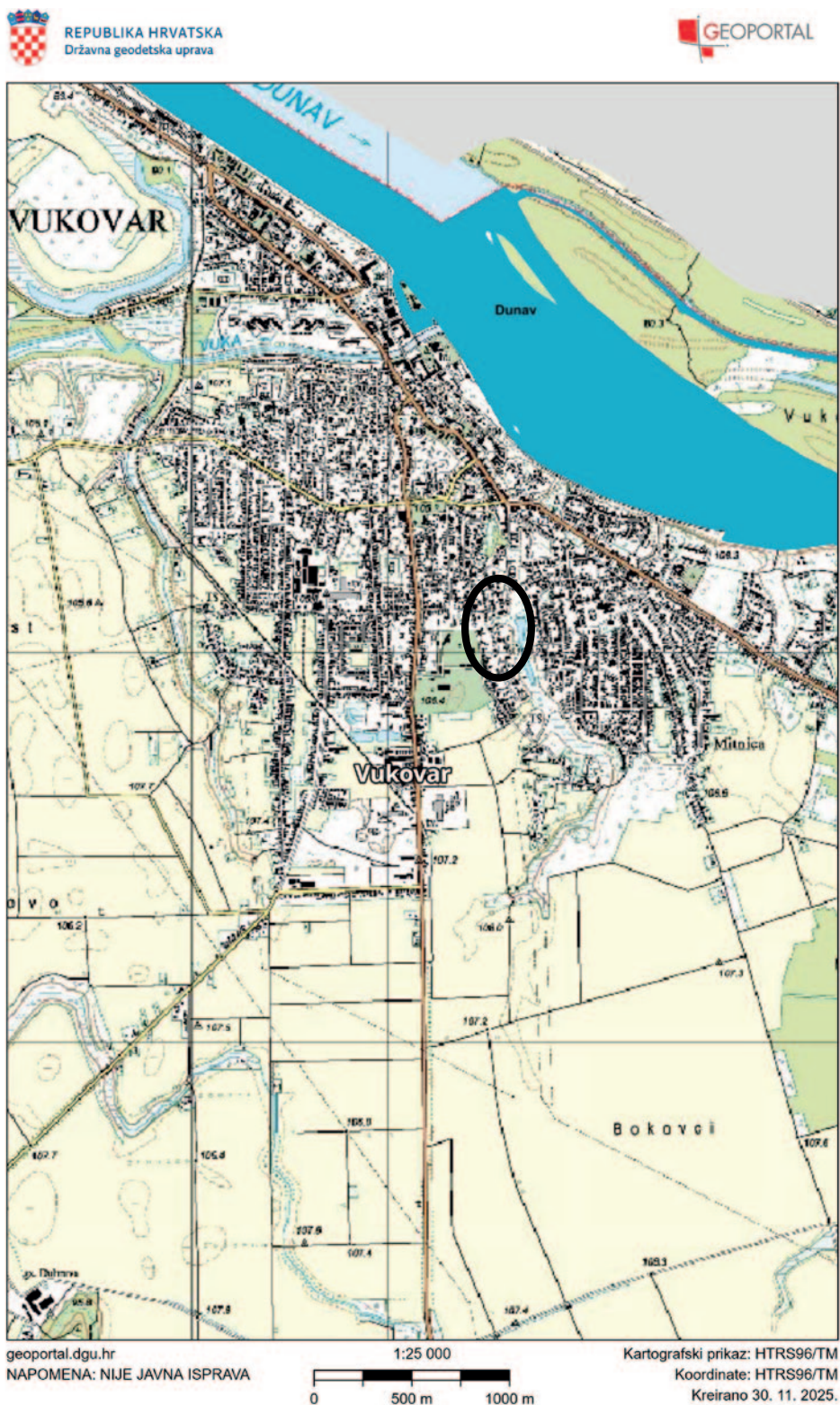
KEY WORDS: Late Bronze Age, Early Iron Age, Danube region, Vukovar, cemetery, Dalj group, pottery, fibula, connectivity

UVOD

Prapovijesno i ranosrednjovjekovno groblje na položaju Lijeva Bara smješteno je na početku visoke lesne zaravni uzdignute nad Dunavom, nizvodno od ušća Vuke i močvarnih ravnicama uz nju. Visoka lesna zaravan pruža se dalje prema istoku, gdje prelazi u sjeverozapadne obronke Fruške gore. Danas se taj položaj nalazi gotovo u središtu grada Vukovara (sl. 1). Groblje je otkriveno početkom 20. stoljeća. Od 1951. do 1953. godine ekipa Arheološkoga muzeja u Zagrebu, na čelu sa Zdenkom Vinskim, Marcelom Gorencom i Ksenijom Vinski-Gasparini, sustavno je istraživala ranosrednjovjekovno groblje bjelobrdске kulture kao i prapovijesno groblje daljske grupe s ukupno istraženim 101 paljevinski i devet kosturnih grobova iz vremena kasnoga brončanog i početka starijega željeznog doba (Demo 2009). Ranosrednjovjekovno groblje s 438 grobova bjelobrdске kulture objavljeno je u obimnoj monografiji Željka Deme (2009). Od prapovijesnih grobova, do sada su objavljena četiri kosturna groba s nalazima (Vinski, Vinski-Gasparini 1962) te 10 paljevinskih grobova (Vinski-Gasparini 1973; 1983). Groblje Vukovar Lijeva Bara predstavljeno je na obimnoj izložbi 1996. godine u Arheološkome muzeju u Zagrebu, pri čemu su bili izloženi paljevinski grobovi Ž73 i Ž92 (Demo 1996: 92, sl. 55–56). Osim toga, grob Ž89 te nekoliko izabranih posuda iz različitih grobova bili

INTRODUCTION

The prehistoric and Early Medieval cemetery at the Lijeva Bara site is situated at the edge of a high loess plateau raised above the Danube, downstream from the mouth of the Vuka River and the marshy plains alongside it. The high loess plateau extends further to the east, where it transitions into the northwestern slopes of Fruška Gora. Today, this site is located almost in the centre of the city of Vukovar (Fig. 1). The cemetery was discovered at the beginning of the 20th century. From 1951 to 1953, a team from the Archaeological Museum in Zagreb, led by Zdenko Vinski, Marcel Gorenc, and Ksenija Vinski-Gasparini, systematically explored the Early Medieval cemetery of the Bijelo Brdo culture, as well as the prehistoric cemetery of the Dalj group, excavating a total of 101 cremation and nine inhumation graves from the Late Bronze Age and the beginning of the Early Iron Age (Demo 2009). The Early Medieval cemetery, containing 438 graves of the Bijelo Brdo culture, was published in an extensive monograph by Željko Demo (2009). Regarding the prehistoric graves, four inhumation graves with finds (Vinski, Vinski-Gasparini 1962) and 10 cremation graves (Vinski-Gasparini 1973; 1983) have been published to date. The Vukovar Lijeva Bara cemetery was presented at a comprehensive exhibition in 1996 at the Archaeological Museum in Zagreb, where cremation graves Ž73 and Ž92 were displayed (Demo 1996: 92, Fig. 55–56). Furthermore, grave Ž89 and several selected vessels



Sl. 1 – Položaj groblja Lijeva Bara u Vukovar (podloga: Geoportal DGU; izradila: D. Ložnjak Dizdar)
Fig. 1 – Location of the Lijeva Bara cemetery in Vukovar (base map: Geoportal DGU; made by: D. Ložnjak Dizdar)

su predstavljeni na izložbi *Ratnici na razmeđu istoka i zapada. Starije željezno doba u kontinentalnoj Hrvatskoj* (Balen-Letunić 2004: 271–273).

from various graves were presented at the exhibition *Warriors at the Crossroads of East and West: The Early Iron Age in Continental Croatia* (Balen-Letunić 2004: 271–273).

Ovom se prilikom objavljuje pet paljevin-
skih grobova (Ž27, Ž75, Ž79, Ž80 i Ž92) u ko-
jima su u Pretpovijesnoj zbirici Arheološkoga
muzeja u Zagrebu otkriveni spaljeni ostaci
pokojnika koji su antropološki analizirani i da-
tirani ¹⁴C metodom u okviru projekta *Djetinj-
stvo u protopovijesti na jugu Karpatske kotli-
ne* (IP-2019-04-2520).

POVIJEST ISTRAŽIVANJA

Lijeva Bara u Vukovaru poznata je i pod stari-
jim nazivom Gradac Janković, gdje je početkom
20. st. otkriveno arheološko nalazište (Putno
izvješće J. Brunšmida, Arhiv AMZ, fasc. Vuko-
var, spis br. 455/1896 od 3. X. 1896), dok su
neki slučajni nalazi dospjeli i u Muzej Slavonije
u Osijeku (Šimić 1984: 109–110, sl. 1–2). Nala-
zi su pristizali u Arheološki muzej u Zagrebu i
tijekom 20-tih i 30-tih godina. Godine 1951.
započela su iskopavanja Arheološkoga muze-
ja u Zagrebu koja su potrajala do 1953. godine.
Tom prilikom su sustavno istraženi bjelobrdske
i daljske groblje na Lijevoj Bari u Vukovaru, pri
čemu su otkriveni 101 paljevinski i devet ko-
sturnih grobova iz kasnoga brončanog i starije-
ga željeznog doba. Na istome položaju nalazila
su se i naselja iz bakrenoga (kostolačka kultu-
ra) i mlađega željeznog doba (latenska kultu-
ra) čiji su tragovi znatno uništeni ukopavanjem
velikoga ranosrednjovjekovnog groblja (Vinski
1955: 234; 1959: 99; Majnarić-Pandžić 1994;
Balen-Letunić 1996: 29). U grobovima su, uz
veći broj keramičkih posuda, bili priloženi i izu-
zetni metalni predmeti (nakit, oružje, konjska
oprema). Groblje pripada grupi Dalj i datirano
je od početka Ha B do kraja Ha C, odnosno od
10. do kraja 7. st. pr. Kr. (Vinski-Gasparini 1973:
158–164; 1983: 604, sl. 38: 11, 13, 14, 16–18,
20–22; T. XCI: 10–16). Tijekom druge polovi-
ce 20. st. i nakon Domovinskoga rata prilikom
izgradnje kuća u Lijevoj Bari otkriveno je još
nekoliko nalaza koji pripadaju prapovijesnome
groblju (Metzner-Nebelsick 2002: 691–693, T.
109–111; 112: 1–3; Bunčić 2007: 58).

U *Ljetopisu Jugoslavenske akademije zna-
nosti i umjetnosti za godinu 1953. Z. Vin-
ski donosi Prethodni izvještaj o iskopavanju
nekropole na Lijevoj Bari u Vukovaru 1951.,
1952. i 1953. godine, pri čemu su opisani su-
marni rezultati istraživanja i prikazan je tlocrt
groba Ž63 kao najvećega od dobro očuvanih
grobova, zatim fotografija groba Ž32 *in situ*
te fotografije prapovijesnih kosturnih grobo-*

On this occasion, five cremation graves (Ž27,
Ž75, Ž79, Ž80, and Ž92) are published. The cre-
mated human remains discovered within these
graves in the Prehistoric Collection of the Archae-
ological Museum in Zagreb were anthropologi-
cally analysed and radiocarbon (¹⁴C) dated as part
of the project *Childhood in Protohistory in the
Southern Carpathian Basin* (IP-2019-04-2520).

HISTORY OF RESEARCH

Lijeva Bara in Vukovar is also known by its older
name, Gradac Janković, where an archaeological site
was discovered at the beginning of the 20th century
(Travel Report by J. Brunšmid, AMZ Archive, Vukovar
folder, file no. 455/1896 dated Oct 3, 1896). Some
chance finds also reached the Museum of Slavo-
nia in Osijek (Šimić 1984: 109–110, Figs. 1–2). Finds
continued to arrive at the Archaeological Museum
in Zagreb during the 1920s and 1930s. Excavations
by the Archaeological Museum in Zagreb began in
1951 and lasted until 1953. At that time, the Bijelo
Brdo and Dalj cemeteries at Lijeva Bara in Vukovar
were systematically excavated, revealing 101 crema-
tion graves and nine inhumation graves from the Late
Bronze Age and the Early Iron Age. Settlements from
the Copper Age (Kostolac Culture) and the Late Iron
Age (La Tène Culture) were also located at the same
site; their traces were significantly disturbed by the
digging of the large Early Medieval cemetery (Vinski
1955: 234; 1959: 99; Majnarić-Pandžić 1994; Balen-
Letunić 1996: 29). The graves contained not only a
large number of ceramic vessels, but also exception-
al metal objects (jewellery, weaponry, horse gear).
The cemetery belongs to the Dalj group and is dated
from the beginning of Ha B to the end of Ha C, cor-
responding to the period from the 10th to the end of
the 7th century BC (Vinski-Gasparini 1973: 158–164;
1983: 604, Fig. 38: 11, 13, 14, 16–18, 20–22; Pl. XCI:
10–16). During the second half of the 20th century
and after the Croatian War of Independence, sev-
eral more finds belonging to the prehistoric cemetery
were discovered during residential construction at
Lijeva Bara (Metzner-Nebelsick 2002: 691–693, Pl.
109–111; 112: 1–3; Bunčić 2007: 58).

In the *Yearbook of the Yugoslav Academy of
Sciences and Arts for 1953*, Z. Vinski presents the
Preliminary Report on the Excavation of the Ne-
cropolis at Lijeva Bara in Vukovar in 1951, 1952,
and 1953, describing the summary excavation re-
sults and presenting the plan of grave Ž63, the
largest of the well-preserved graves, followed
by a photograph of grave Ž32 *in situ* and photo-
graphs of prehistoric inhumation graves 202, 269,

va 202, 269 i 320 *in situ* (Vinski 1955: sl. 4–5, 10–11). U sumarnome prikazu prapovijesnih nalaza osobito su opisani paljevinski i kosturni grobovi s metalnim priložima, a od nalaza izuzetno se spominje oštećena fibula iz groba Ž75 „od željeza je i broncom reparirana.“, zatim nalazi koplja, fibule i okova za brus iz kosturnoga groba 269 i „izuzetno rijetkom srebrenom dijademu (on se sastoji od savinutih pločica i karičastih rebara, koji su izmjenično naredani oko glave na kožnoj podlozi), te s brončanim kolutom na čelu“ iz groba 202 (Vinski 1955: 237). Spominju se i spališta koja su se sastojala o zapečene zemlje, pepela i gareži te jedno popločano ulomcima keramičke kulture polja sa žarama (Vinski 1955: 238). Kraću verziju izvještaja na njemačkome jeziku o iskopavanjima u Vukovaru donosi Z. Vinski u časopisu *Archaeologia Iugoslavica* III (Vinski 1959). Problemski rad *O utjecajima istočnoalpske halštatske kulture i balkanske ilirske kulture na slavonsko-srijemsko Podunavlje* donose Z. Vinski i K. Vinski-Gasparini 1962. godine u Arheološkim radovima i raspravama II kada se, između ostalih metalnih nalaza iz Podunavlja, osvrću na metalne nalaze iz istraženih grobova iz Vukovara Lijeve Bare – koplja, brus, fibulu, perlu, narukvice, privjeske i obručasti nakit za kosu (Vinski, Vinski-Gasparini 1962: 271, T. III–IV). Isto tako, dotiču se i pojave rijetkih kosturnih grobova u prapovijesnome groblju gdje prevladava paljevinski ukop u žari. U ovoj studiji groblje na vukovarskoj Lijevoj Bari K. Vinski-Gasparini i Z. Vinski označili su grobljem domaće halštatske zajednice, što je vidljivo u keramici, s jakim utjecajima istočnoalpskoga te balkanskoga prostora, a o čemu svjedoče metalni prilozi u grobovima kao i kosturni način pokopavanja (Vinski, Vinski-Gasparini 1962: 275, 285).

U monografiji *Kultura polja sa žarama u sjevernoj Hrvatskoj* K. Vinski-Gasparini objavljuje detaljnije deset paljevinskih grobova (grobovi Ž16, Ž17, Ž37, Ž39, Ž42, Ž65, Ž67, Ž75, Ž80, Ž89) te četiri kosturna groba s metalnim priložima (grobovi 202, 210, 269, 320) (Vinski-Gasparini 1973: 158–164, T. 121–125). Prapovijesno groblje u Vukovaru K. Vinski-Gasparini datira od ranoga Ha B do završetka Ha C stupnja te ističe sličnost s istovremenim grupama rasprostranjenima uzvodno uz Dunav u Mađarskoj, Slovačkoj, Austriji i Češkoj (Vinski-Gasparini 1973: 159). Najbrojniji keramički materijal označen

and 320 *in situ* (Vinski 1955: Figs. 4–5, 10–11). The summary review of prehistoric finds gives particular attention to cremation and inhumation graves with metal grave goods; among the finds, a notably mentioned piece is a damaged fibula from grave Ž75, described as “made of iron and repaired with bronze.” Other significant discoveries include a spear, a fibula, and a whetstone fitting from inhumation grave 269, as well as an “exceptionally rare silver diadem (consisting of bent plates and ring-shaped ribs, arranged alternately around the head on a leather base), with a bronze ring on the forehead” from grave 202 (Vinski 1955: 237). Pyre sites consisting of burnt earth, ash, and soot are also mentioned, as well as one paved with pottery fragments of the Urnfield culture (Vinski 1955: 238). Z. Vinski presents a shorter version of the report on the excavations in Vukovar in German in the journal *Archaeologia Iugoslavica* III (Vinski 1959). Z. Vinski and K. Vinski-Gasparini published the thematic study *On the Influences of the Eastern Alpine Hallstatt Culture and the Balkan Illyrian Culture on the Slavonian-Syrmian Danube Region* in 1962 in *Arheološki radovi i rasprave* II. In this work, among other metal finds from the Danube region, they review metal finds from the excavated graves at Vukovar Lijeve Bara – spears, a whetstone, a fibula, a bead, bracelets, pendants, and hair rings (Vinski, Vinski-Gasparini 1962: 271, Pl. III–IV). They also address the occurrence of rare inhumation burials in the prehistoric cemetery where cremation urn burials predominate. In this study, K. Vinski-Gasparini and Z. Vinski designated the cemetery at Vukovar Lijeve Bara as belonging to a local Hallstatt community, as evidenced by the pottery, and showing strong Eastern Alpine and Balkan influences, as testified by the metal grave goods as well as the inhumation burial practice (Vinski, Vinski-Gasparini 1962: 275, 285).

In the monograph *The Urnfield Culture in Northern Croatia*, K. Vinski-Gasparini provides more detailed descriptions of ten cremation graves (graves Ž16, Ž17, Ž37, Ž39, Ž42, Ž65, Ž67, Ž75, Ž80, Ž89) and four inhumation graves with metal grave goods (graves 202, 210, 269, 320) (Vinski-Gasparini 1973: 158–164, Pl. 121–125). K. Vinski-Gasparini dates the prehistoric cemetery in Vukovar from early Ha B to the end of Ha C phase and highlights similarities with contemporaneous groups distributed upstream along the Danube in Hungary, Slovakia, Austria, and Czechia (Vinski-Gasparini 1973: 159). The most abundant ceramic material is described as highly

je kao vrlo uniforman s ostalim tada poznatim grobljima daljske grupe, dok su metalni predmeti povezani s istočnoalpskim krugom i „tračko-kimerijskim“ stilom. Predstavila je i pokušaj uže periodizacije groblja u Vukovaru u okviru „slavonsko-srijemskih podunavskih nekropola“ prema zatvorenim cjelinama iz Vukovara – grobovi Ž17 (T. 121: 1–3), Ž37 (T. 121: 4–6), Ž39 (T. 121: 7–8) i Ž67 (T. 121: 9–11) datirani su u Ha B1 stupanj, dok grobovi Ž80 (T. 122: 1–8) i Ž16 (T. 123: 1–8) pripadaju Ha B2-Ha B3 stupnju. Na kraju Ha B3 i početkom Ha C1 stupnja, odnosno u drugu polovicu 8. st. pr. Kr. datira kosturne grobove s nalazima – grob 202 (T. 125: 11–12), grob 210 (T. 125: 5–6), grob 269 (T. 125: 1–4) i grob 320 (T. 125: 7–10). Na donju granicu trajanja groblja u Vukovaru stavlja grob Ž65 (T. 123: 9–10), grob Ž75 (T. 124: 5–7), grob Ž89 (T. 122: 9–13), grob Ž42 (T. 124: 1–4) i dvopetljestu lučnu fibulu s uglatim čvorovima na luku panonskoga tipa (T. 125: 13) (Vinski-Gasparini 1973: 162–164). Potom se K. Vinski-Gasparini u radu *Osvrt na istraživanja kasnog brončanog i starijeg željeznog doba u sjevernoj Hrvatskoj u Izdanjima Hrvatskog arheološkog društva 2* osvrće na datiranje trajanja nalazišta Batina, Dalj, Vukovar i Šaregrad u okviru grupe Dalj od početka 10. st. pr. Kr. te kontinuiranome trajanju u starije željezno doba. Osobito naglašava pripadnost groblja u Vukovaru i Šaregradu grupi Dalj (Vinski-Gasparini 1978: 135). Ovdje nudi i podjelu daljske kulture na četiri razvojna stupnja, pri čemu su prva dva stupnja zastupljena na groblju Vukovar (Vinski-Gasparini 1978: 138). U poglavlju o grupi Dalj u svesku IV *Praistorije jugoslavenskih zemalja* K. Vinski-Gasparini detaljnije opisuje pogrebne običaje na groblju Vukovar Lijeve Bara. Navodi da su grobne jame kružnoga oblika promjera do 1,80 m (npr. grob 63). U grobnu jamu položeni su žara i keramičke posude različitih veličina i oblika složene na okupu – od velikih žara, lonaca, kantharosa i zdjela, do zdjelica, plitica, šalica i dr. U žarama su se nalazile spaljene kosti pokojnika kao i spaljeni dijelovi nošnje i nakita. Pokojnici u kosturnim grobovima bili su položeni na leđima orijentacije jug (glava) – sjever (noge) ili obrnuto (Vinski-Gasparini 1983: 610). C. Metzner-Nebelsick u svojoj monografskoj objavi iz 2002. godine u crtežu donosi nalaze iz razorenih grobova iz Vukovara Lijeve Bare koji su se čuvali u Grad-

uniform with other then-known cemeteries of the Dalj group, while metal objects are linked to the Eastern Alpine sphere and the “Thraco-Cimmerian” style. She also attempts a finer periodization of the Vukovar cemetery within the framework of “Slavonian-Syrmian Danube necropolises” based on closed contexts from Vukovar: graves Ž17 (Pl. 121: 1–3), Ž37 (Pl. 121: 4–6), Ž39 (Pl. 121: 7–8), and Ž67 (Pl. 121: 9–11) are dated to Ha B1 phase, while graves Ž80 (Pl. 122: 1–8) and Ž16 (Pl. 123: 1–8) belong to Ha B2-Ha B3 phase. She dates the inhumation graves with finds – grave 202 (Pl. 125: 11–12), grave 210 (Pl. 125: 5–6), grave 269 (Pl. 125: 1–4), and grave 320 (Pl. 125: 7–10) – to the end of Ha B3 and the beginning of Ha C1 phase, corresponding to the second half of the 8th century BC. She places grave Ž65 (Pl. 123: 9–10), grave Ž75 (Pl. 124: 5–7), grave Ž89 (Pl. 122: 9–13), grave Ž42 (Pl. 124: 1–4), and a double-looped bow fibula with angular knots on the bow of the Pannonian type (Pl. 125: 13) at the lower boundary of the duration of the Vukovar cemetery (Vinski-Gasparini 1973: 162–164). Subsequently, in the paper *Review of Research on the Late Bronze Age and Early Iron Age in Northern Croatia*, published in *Izdanja Hrvatskog arheološkog društva 2*, K. Vinski-Gasparini discusses the dating of the duration of the Batina, Dalj, Vukovar, and Šaregrad sites within the Dalj group from the beginning of the 10th century BC and their continuous duration into the Early Iron Age. She particularly emphasizes the affiliation of the Vukovar and Šaregrad cemeteries with the Dalj group (Vinski-Gasparini 1978: 135). Here she proposes a division of the Dalj culture into four developmental stages, with the first two stages represented at the Vukovar cemetery (Vinski-Gasparini 1978: 138). In the chapter on the Dalj group in Volume IV of *The Prehistory of Yugoslav Lands (Praistorija jugoslavenskih zemalja)*, K. Vinski-Gasparini describes the burial practices at the Vukovar Lijeve Bara cemetery in more detail. She states that the grave pits are circular, up to 1.80 m in diameter (e.g., grave 63). An urn and ceramic vessels of various sizes and shapes were placed in the grave pit and arranged together – ranging from large urns, pots, kantharoi, and bowls, to small bowls, shallow bowls, cups, and others. Cremated bones of the deceased, along with burnt items of costume and jewellery, were found inside the urns. The deceased in inhumation graves were laid on their backs with their head to the south and feet to the north, or vice versa (Vinski-Gasparini 1983:

skome muzeju Vukovar prije Domovinskoga rata (Metzner-Nebelsick 2002: 691–693, T. 109–111; 112: 1–3).

Arheološki nalazi s lokaliteta danas su pohranjeni u Arheološkome muzeju u Zagrebu, Gradskome muzeju u Vukovaru i Arheološkome muzeju Osijek (Muzeju Slavonije Osijek).

GRUPA DALJ

POVIJEST ISTRAŽIVANJA DALJSKE GRUPE

U daljskoj grupi istraživanja su većinom obuhvatila prostore groblja (sl. 2), dok su naselja poznata samo na osnovi zaštitnih istraživanja manjega opsega (Minichreiter 1985a; Šimić 2002; Vukmanić 2014; Dujmić 2021), osim sustavnih istraživanja daljskoga naselja u Batini koje je objavljeno u okviru sumarnih izvještaja (Bulat 1970: 43; Pinterović 1971: 55–56).

Eponimno groblje Dalj nalazi se na položaju Busija između današnjega Aljmaša, Eruduta i Dalja na uzdignutoj Daljskoj planini. Tu je V. Hoffiller od 1909. do 1911. godine poduzeo istraživanja groblja, čija je većina keramičkih nalaza objavljena u *Corpus vasorum antiquorum* (Hoffiller 1938: 2). Vrlo je važan i slučajan nalaz iz Dalja koji se sastoji od zlatnih dijelova konjske opreme, od kojih su dva ukrasna predmeta rađena na proboj, te od zoomorfne brončane fibule platinirane zlatom (Ebert 1908: 206, Fig. 114: a–b; 115). Usporedbe za zoomorfnu zlatnom obloženu fibulu nalaze se u zlatnim nalazima u Fokoru i Mihalkovu što, uz motiv prikaza, ukazuje na istočni izvor opisanoga predmeta iz Dalja (Majnarić-Pandžić 1998: 225, sl. 49).

Na Kraljevcu na Erdutskome brdu (Daljskoj planini) 1978. godine poduzeto je zaštitno iskopavanje nakon što su još od kraja 19. stoljeća u Muzej Slavonije u Osijeku stizali prapovijesni nalazi. Blizina nalazišta Kraljevac ili Kraljevo brdo položaju na Busiji kao i pronađena materijalna ostavština potvrdili su povezanost ta dva nalazišta. Na Kraljevcu je bilo naselje ljudi koji su svoje pokojnike sahranjivali na groblju na Busiji. Uz keramiku za svakodnevnu upotrebu (lonce, zdjele, peke), pronađena je kulturološki karakteristična keramika koja se svojim oblicima može pripisati daljskoj grupi, kao što su prepoznati i ulomci keramike s karakterističnim ukrasom bosut-

610). In her monograph published in 2002, C. Metzner-Nebelsick presents drawings of finds from disturbed graves from Vukovar Lijeva Bara which were kept in the Vukovar City Museum before the Croatian War of Independence (Metzner-Nebelsick 2002: 691–693, Pl. 109–111; 112: 1–3).

The archaeological finds from the site are currently housed in the Archaeological Museum in Zagreb, the Vukovar City Museum, and the Archaeological Museum Osijek (Museum of Slavonia Osijek).

THE DALJ GROUP

HISTORY OF RESEARCH OF THE DALJ GROUP

In the Dalj group, research has mostly focused on cemeteries (Fig. 2), while settlements are known only from small-scale rescue excavations (Minichreiter 1985a; Šimić 2002; Vukmanić 2014; Dujmić 2021), with the exception of the systematic excavations of the Dalj settlement at Batina, which were published within summary reports (Bulat 1970: 43; Pinterović 1971: 55–56).

The eponymous Dalj cemetery is located at the Busija site between present-day Aljmaš, Erdut, and Dalj on the elevated Dalj Mountain. There, V. Hoffiller conducted excavations of the cemetery from 1909 to 1911; the majority of the ceramic finds were published in the *Corpus vasorum antiquorum* (Hoffiller 1938: 2). A very important chance find from Dalj consists of golden horse gear parts, two of which are decorative items made in openwork, and a zoomorphic bronze fibula plated with gold (Ebert 1908: 206, Fig. 114: a–b; 115). Parallels for the zoomorphic gold-plated fibula are found in the gold finds from Fokoru and Mihalkovo, which, along with the depicted motif, points to an eastern origin for the described object from Dalj (Majnarić-Pandžić 1998: 225, Fig. 49).

In 1978, a rescue excavation was undertaken at Kraljevac on the hill of Erdutsko Brdo (Daljska Planina), as prehistoric finds had been arriving at the Museum of Slavonia in Osijek since the end of the 19th century. The proximity of the site of Kraljevac or Kraljevo Brdo to the location at Busija, as well as the recovered material remains, confirmed the connection between these two sites. At Kraljevac there was a settlement of people who buried their dead at the Busija cemetery. Along with pottery for daily use (pots, bowls, baking dishes), the excavations unearthed culturally characteristic pottery with forms that can be at-



Sl. 2 – Nalazišta daljske grupe u južnome dijelu srednjega Podunavlja (podloga: T. Kaniški za Institut za arheologiju; izradila: D. Ložnjak Dizdar)

Fig. 2 – Sites of the Dalj group in the southern part of the middle Danube region (base: T. Kaniški for the Institute of Archaeology; made by: D. Ložnjak Dizdar)

ske grupe (Šimić 1996: 36). Na brdu Kraljevac pronađeni su i ostava brončanih predmeta koji pripadaju konjskoj opremi te brončana igla (Šimić 1996: 38; Dujmić, u tisku).

U blizini Dalja, u Aljmašu na položaju Podunavlje, nalazi se prostrana zaravan gdje su pronađene jame s nalazima koji se mogu pripisati daljskoj grupi (Minichreiter 1985b: 25). Groblja ovoga naselja otkrivena su na zapadnome i istočnome kraju Aljmaša, a dokumentirana su slučajnim nalazima paljevinskih grobova (Šimić 1996: 37).

Na krajnjem istočnome rubu Daljske planine u Erdutu zabilježena su tri nalazišta daljske grupe: Mali i Veliki Varod kao naselja te Žarkovac kao pripadajuće groblje (Šimić 1996: 37). O Velikom i Malom Varodu te pronađenim

tributed to the Dalj group, as well as potsherds with characteristic decoration of the Bosut group (Šimić 1996: 36). Furthermore, the hill at Kraljevac included a hoard of bronze objects belonging to horse gear and a bronze pin (Šimić 1996: 38; Dujmić, forthcoming).

The Podunavlje site in Aljmaš near Dalj includes an extensive plain where pits were found containing finds attributable to the Dalj group (Minichreiter 1985b: 25). The cemeteries of this settlement were discovered at the western and eastern ends of Aljmaš and were documented through chance finds of cremation graves (Šimić 1996: 37).

At the easternmost edge of Daljska Planina in Erdut, three sites of the Dalj group have been recorded: Mali Varod and Veliki Varod as settle-

prapovijesnim nalazima, među kojima se mogu prepoznati i oni daljske grupe, izvještavao je J. Purić još početkom 20. stoljeća (Purić 1901: 178–181, sl. 125: 1, 4). Položaji su zaštitno istraživani u manjem obimu osamdesetih godina 20. stoljeća kada su na Žarkovcu otkriveni paljevinski grob i ostaci naselja iz vremena Ha B daljske grupe, dok je na Velikom Varodu pronađeno prapovijesno naselje na kojem se živjelo u neolitiku, eneolitiku, srednjem brončanom i starijem željeznom dobu (Minichreiter 1985a: 26–28, T. XIV–XVI).

Privlačan položaj za naseljavanje predstavlja položaj na krajnjem istočnome rubu Banskoga brda u Baranji gdje ono dopire do Dunava. Danas se podno njega smjestila Batina. Početkom 20. stoljeća u Batini je otkriveno i nestručno iskopano groblje iz kasnoga brončanog i ranoga željeznog doba čiji se nalazi danas čuvaju u devet muzeja diljem srednje Europe¹ (Foltiny 1961: 175). Pored ravnih grobova, postojali su i grobovi pod tumulima koji su danas jedva vidljivi u krajoliku i nalaze se ispred ulaznoga dijela utvrđenoga naselja (Metzner-Nebelsick 1997: 15). Tumuli su kasnije potvrđeni u istraživanjima Arheološkoga muzeja u Osijeku/Muzeja Slavonije (Bojčić et al. 2011; Dizdar et al. 2021). Grobovi su bili paljevinski i kosturni te iz njih potječu keramičke posude koje su imale funkciju žara ili priloga kao i brončani predmeti: lučne dvopetljaste fibule s glatkim ili tordiranim lukom, fibule tipa Vače, oprema za sprezanje konja «tračkokimerijskoga» tipa, spiralne narukvice, torkvesi, sljepoočničarke, privjesci, životinjska plastika i halštatske kacige (Vinski, Vinski-Gasparini 1962: 270, sl. 108–111). Godine 1970. provedeno je sustavno iskopavanje na nalazištu Gradac koje je izvršila međunarodna ekipa pod vodstvom S. Foltiny i K. Vinski-Gasparini koja je istražila dio kasnobrončanodobnoga i stariježeljeznodobnoga naselja te dio rimske arhitekture (Bulat 1970: 43; Pinterović 1971: 55–56). Manja zaštitna istraživanja na istome nalazištu obavljena su 1976. i 1977. godine i, uz antičku keramiku, otkrivena su

ments, and Žarkovac as the associated cemetery (Šimić 1996: 37). Back at the beginning of the 20th century, J. Purić reported on both Varod sites and their prehistoric finds, some of them clearly from the Dalj group (Purić 1901: 178–181, Fig. 125: 1, 4). The sites were subject to small-scale rescue excavations in the 1980s, when a cremation grave and remains of a settlement from the Ha B period of the Dalj group were discovered at Žarkovac, while a prehistoric settlement inhabited during the Neolithic, Eneolithic, Middle Bronze Age, and Early Iron Age was found at Veliki Varod (Minichreiter 1985a: 26–28, Pl. XIV–XVI).

A favourable location for settlement lies on the easternmost edge of the hill of BANSKO BRDO in Baranja, where it reaches the Danube. Today, the settlement of Batina sits at its base. At the beginning of the 20th century, a Late Bronze Age and Early Iron Age cemetery was discovered and unprofessionally excavated in Batina; the finds are now housed in nine museums across Central Europe¹ (Foltiny 1961: 175). Alongside flat graves, there were also graves under tumuli, which are barely visible in the landscape today and are located in front of the entrance to the fortified settlement (Metzner-Nebelsick 1997: 15). The existence of the tumuli was later confirmed during excavations conducted by the Archaeological Museum in Osijek / Museum of Slavonia (Bojčić et al. 2011; Dizdar et al. 2021). The burials included both cremations and inhumations, yielding ceramic vessels that served as urns or grave goods, as well as bronze objects: double-looped bow fibulae with smooth or twisted bows, Vače-type fibulae, horse harness equipment of the “Thraco-Cimmerian” type, spiral bracelets, torcs, temple rings, pendants, zoomorphic figurines, and Hallstatt helmets (Vinski, Vinski-Gasparini 1962: 270, Figs. 108–111). In 1970, systematic excavations were conducted at the Gradac site by an international team led by S. Foltiny and K. Vinski-Gasparini, which investigated part of the Late Bronze Age and Early Iron Age settlement, as well as part of the Roman architecture (Bulat 1970: 43; Pinterović 1971: 55–56). Smaller rescue excavations were carried out at the same site in 1976 and 1977; along with Roman pottery, two hori-

¹ Nalazi se čuvaju u muzejima u Budimpešti, Beču, Berlinu, Somboru, Subotici, Keszthelyu i Pécsu. Postojala je i zbirka predmeta u Römisch-Germanischen Zentralmuseums u Mainzu za koju se pretpostavljalo da potječe iz Batine, no S. Foltiny je dokazao da su predmeti porijeklom s tri ili četiri lokaliteta iz bivšeg okruga Bács-Bodrog, dakle neki s područja današnje Bačke te jedan iz bivšeg okruga Liptau (Foltiny 1961).

¹ The finds are kept in museums in Budapest, Vienna, Berlin, Sombor, Subotica, Keszthely, and Pécs. There was also a collection of objects in the Römisch-Germanisches Zentralmuseum in Mainz, previously assumed to originate from Batina, but S. Foltiny proved that the objects actually originated from three or four sites in the former Bács-Bodrog County, meaning some from the territory of present-day Bačka and one from the former Liptau County (Foltiny 1961).

dva horizonta daljske grupe, a zabilježena je i prisutnost latenske keramike (Minichreiter 1976: 38; Bojčić 1977: 42–43, T. XXIII: 3–XXIV). Zaštitna istraživanja na Gradcu ponad Batine uslijedila su i 2002. godine kada je istražen dio kasnobrončanodobnoga naselja, odnosno nadzemna kuća stradala koja je datirana u vrijeme Ha A (Šimić 2002: 58). Na položaju Gradac na Batini provedena su još neka manja istraživanja na području naselja 2013. godine (Vukmanić 2014; Dujmić 2021). Od 2010. godine sustavno se provode iskopavanja na položaju Sredno, pri čemu je do sada istraženo ukupno 235 grobova od čega 81 daljski i 154 rimska s nekoliko stotina nalaza.² Stariježeljeznodobna naselja u Baranji otkrivena su još površinskim nalazima u Branjinom Vrhu i Vardarcu (Minichreiter 1987: 74) te prilikom nadzora izgradnje ceste između Kneževih Vinograda i Suze (Ložnjak Dizdar, Dizdar 2014: 21–23, Fig. 2), dok je u Zmajevcu (Bojčić et al. 2011) nedavno potvrđena stratigrafija naselja na Varhegyu probnim istraživanjima obrambenoga sustava dunavskoga limesa.

Važno nalazište daljske grupe na Dravi predstavlja i Osijek – Donji grad gdje se, prema dosadašnjim nalazima, istočno od Kliničke bolnice nalazilo naselje datirano od Ha B do u Ha D vrijeme (Šimić 2001: 36–37). Pripadajuće groblje Ha B vremena vjerojatno se nalazilo na području današnje Tvornice koža i Osnovne škole Jagoda Truhelka (Šimić 1980: 229, T. CXXIX), dok se mlađe groblje Ha C–D vremena nalazilo se na prostoru Bolnice i sjeverno od nje (Šimić 2001: 34; 2004: 54–56, sl. 18, 276, kat. jed. 37–38, 40). Grupi Dalj mogu se pripisati i dva pronađena groba u Belišću datirana na kraj kasnoga brončanog i početak starijega željeznog doba (Ložnjak Dizdar 2014). C. Metzner-Nebelsick pripisala je i nalazište Pécs – Jakabhegy u jugoistočnoj Transdanubiji ovoj skupini koju ona naziva jugoistočnom panonskom grupom u kasnome brončanom i starijem željeznom dobu (Metzner-Nebelsick 1997: 11–12; 2002; 2017: 350, Fig. 1–2).

U Bačkoj s istočne strane Dunava nalazi se groblje u Doroslovu na položaju Đepfeld koje je za sada najveće istraženo groblje daljske grupe. Groblje je otkriveno i zaštitna

zons of the Dalj group were discovered, and the presence of La Tène pottery was also recorded (Minichreiter 1976: 38; Bojčić 1977: 42–43, Pl. XXIII: 3–XXIV). Rescue excavations at Gradac above Batina followed in 2002, when part of the Late Bronze Age settlement was explored, including a destroyed above-ground house dated to Ha A phase (Šimić 2002: 58). Further small-scale excavations at the Gradac site in Batina were conducted in the settlement area in 2013 (Vukmanić 2014; Dujmić 2021). Systematic excavations have been ongoing at the Sredno site since 2010, with a total of 235 graves investigated so far – 81 belonging to the Dalj group and 154 Roman – with several hundred associated finds.² Early Iron Age settlements in Baranja were also discovered through surface finds at Branjin Vrh and Vardarac (Minichreiter 1987: 74), and during the monitoring of road construction between Kneževi Vinogradi and Suza (Ložnjak Dizdar, Dizdar 2014: 21–23, Fig. 2). Recently, at Zmajevac (Bojčić et al. 2011), stratigraphic evidence of a settlement at Várhegy was confirmed by trial excavations of the defensive system of the Danube limes.

Osijek – Donji Grad is another important site of the Dalj group on the Drava River. According to findings to date, a settlement dated from Ha B to Ha D was located east of the Clinical Hospital (Šimić 2001: 36–37). The associated Ha B cemetery was likely located in the area of the present-day leather factory and the Jagoda Truhelka Elementary School (Šimić 1980: 229, Pl. CXXIX), while the later Ha C–D cemetery was located in the area of the Hospital and north of it (Šimić 2001: 34; 2004– 54–56, Fig. 18, 276, Cat. Nos. 37–38, 40). The Dalj group also includes two graves found in Belišće and dated to the end of the Late Bronze Age and the beginning of the Early Iron Age (Ložnjak Dizdar 2014). Furthermore, C. Metzner-Nebelsick attributed the Pécs – Jakabhegy site in southeastern Transdanubia to this group, which she terms the southeastern Pannonian group in the Late Bronze Age and Early Iron Age (Metzner-Nebelsick 1997: 11–12; 2002; 2017: 350, Fig. 1–2).

The cemetery in Doroslovo at the Đepfeld site in Bačka, on the eastern side of the Danube, is currently the largest excavated cemetery of the Dalj group. The cemetery was discovered and rescue excavations began in 1957 during the

² Prema usmenome priopćenju D. Dujmića, višega kustosa Arheološkoga muzeja u Osijeku i voditelja iskopavanja na Batini.

² According to oral communication from D. Dujmić, senior curator of the Archaeological Museum in Osijek and head of excavations at Batina.

istraživanja su započela 1957. godine uslijed iskopa kanala Dunav – Tisa – Dunav. Najveći broj pripada paljevinskim halštatskim grobovima (Ha C/D vrijeme), dok su u manjem broju zabilježeni nešto mlađi kosturni grobovi kao i jame latenske kulture (Brukner 1959: 5, 16–17). Istraživanja su nastavljena 1963., 1974. i 1975. godine kada su otkriveni grobovi iz Ha B/C vremena (Trajković 1974: 62–63, T. LXV–LXVI) s metalnim priložima od željeza i bronce (Trajković 1975: 44). Istraženi grobovi daljske grupe u Doroslovu datirani su od Ha B do u Ha C vrijeme, dok kosturni grobovi pripadaju mlađoj fazi starijega željeznog doba (Trajković 1977: 3, 9–10). Sveukupno je u Doroslovu istraženo 180 grobova, od čega je pet kosturnih, čime ono predstavlja najveće do sada istraženo groblje daljske grupe (Tasić 1994: 10). Groblje u Doroslovu u cjelosti je objavljeno 2008. godine i datirano je u kontinuitetu od Ha A do kraja Ha C, dok se kosturni grobovi datiraju u 5. i 4. st. pr. Kr. te ne predstavljaju kontinuitet u pokopavanju (Trajković D. 2008).

Grobovi daljske grupe slučajno su otkriveni i u Sotinu u Srijemu. Iz jednoga groba spominju se lonac u funkciji žare, zatim ulomci zdjela s uvučenim koso kaneliranim rubom, ulomci dvaju fibula s čvorovima na luku te igla fibule i izlomljena tanka brončana žica (Dorn 1976: 12–13). C. Metzner-Nebelsick predstavlja slučajne nalaze iz Sotina iz Muzeja za prapovijest i ranu povijest u Berlinu te nalaz groba iz ulice Vladimira Nazora (Metzner-Nebelsick 2002: 688–691, Katalogabb. 24, T. 108: 14–15). Potaknut ovim podacima, Institut za arheologiju u suradnji s Gradskim muzejom Vukovar proveo je istraživanja na Srednjem polju na položajima Vašarište i Jaroši od 2008. do 2018. godine, pri čemu je istraženo ukupno 119 grobova daljske grupe i 46 grobova iz rimskoga doba (Hutinec, Ložnjak Dizdar 2010; Ložnjak Dizdar 2019a). U Šaregradu na položaju Removo 1903. godine slučajno je otkriveno groblje pripisano grupi Dalj s kojega su nalazi skupljeni do 1910. godine bez očuvanih grobnih cjelina (Vinski-Gasparini 1973: 185, T. 114). Naknadnim pregledom nalaza i arhive Arheološkoga muzeja u Zagrebu rekonstruirane su dvije cjeline koje se odnose na kosturne grobove s početka starijega željeznog doba (Balen-Letunić 2004).

digging of the Danube–Tisza–Danube canal. Most of the graves belong to the Hallstatt cremation burials (Ha C/D period), while a smaller number of slightly later inhumation graves and pits of the La Tène culture have also been recorded (Brukner 1959: 5, 16–17). Excavations continued in 1963, 1974, and 1975, when graves from the Ha B/C period were discovered (Trajković 1974: 62–63, Pl. LXV–LXVI) containing metal grave goods made of iron and bronze (Trajković 1975: 44). The excavated graves of the Dalj group in Doroslovo are dated from Ha B to Ha C, while the inhumation graves belong to the later phase of the Early Iron Age (Trajković 1977: 3, 9–10). In total, 180 graves were excavated at Doroslovo, five of which were inhumation burials, making it the largest cemetery of the Dalj group excavated to date (Tasić 1994: 10). The Doroslovo cemetery was published in full in 2008 and dated continuously from Ha A to the end of Ha C, while the inhumation graves date to the 5th and 4th centuries BC and do not represent continuity in burial practices (Trajković D. 2008).

Graves of the Dalj group were also accidentally discovered in Sotin in Sirmia. One grave included a pot serving as an urn, fragments of bowls with inverted obliquely fluted rims, fragments of two fibulae with knots on the bow, a fibula pin, and a broken thin bronze wire (Dorn 1976: 12–13). Metzner-Nebelsick presents the chance finds from Sotin held in the Museum of Prehistory and Early History in Berlin, as well as the discovery of a grave from Vladimira Nazora Street (Metzner-Nebelsick 2002: 688–691, Katalogabb. 24, Pl. 108: 14–15). Motivated by this data, the Institute of Archaeology, in cooperation with the Vukovar City Museum, conducted excavations at Srednje Polje, at the Vašarište and Jaroši sites, from 2008 to 2018, unearthing a total of 119 graves of the Dalj group and 46 graves from the Roman period (Hutinec, Ložnjak Dizdar 2010; Ložnjak Dizdar 2019a). At the Removo site in Šaregrad, a cemetery attributed to the Dalj group was accidentally discovered in 1903. Finds were collected there until 1910; however, no grave assemblages were preserved (Vinski-Gasparini 1973: 185, Pl. 114). A subsequent review of the finds and the archives of the Archaeological Museum in Zagreb enabled the reconstruction of two assemblages pertaining to inhumation graves from the beginning of the Early Iron Age (Balen-Letunić 2004).

PERIODIZACIJA DALJSKE GRUPE

Prvi puta je nalaze iz Dalja i Batine (Kiskőszeg) izdvojio V. G. Childe u okviru «panonske grupe» koja je bila rezultat reakcije prostora Podunavlja na zapadne utjecaje (Childe 1929: 407–409). Groblja tipa Dalj – Batina kao što su Dalj i Vukovar K. Vinski-Gasparini označila je 1973. godine kao *južni ogranak srodnih podunavskih nekropola Transdanubije i onih Donje Austrije* unutar kulture polja sa žarama koja se počinju javljati u četvrtoj fazi njezine podjele kulture polja sa žarama u sjevernoj Hrvatskoj (Vinski-Gasparini 1973: 22). Ova groblja traju i u Ha C stupanj, ali od sredine 8. st. pr. Kr. u njima se očituju novi elementi koji se mogu usporediti s inventarima ostava pete faze na ovome području (Adaševci, Šarengard). Prisutnost, novih oblika tzv. trako-kimerijskoga kruga i Ha C vremena označavaju prekid kulture polja sa žarama na području hrvatskoga Podunavlja (Vinski-Gasparini 1973: 22). Ističe kako je grupa Dalj nastala ekspanzijom grupe Vál iz sjeveroistočne Transdanubije prema jugu na periferno područje grupe Zagreb kulture polja sa žarama koje je bilo pod utjecajem Gáva keramike (Vinski-Gasparini 1983: 615). Područje daljske grupe rasprostire se na uskome području hrvatskoga Podunavlja od Baranje do zapadnoga Srijema, uglavnom uz desnu obalu Dunava, dok je u Bačkoj zahvatila i lijevu obalu. Nalazi bi se mogli očekivati i u mađarskoj Baranji, no dosadašnji nalazi ne pružaju preciznije podatke o tome (Vinski-Gasparini 1983: 601). N. Tasić pak drži da se daljska grupa može pratiti od mađarsko-hrvatske Baranje, odnosno na sjeveru od linije južno od gorja Mecsek do ušća Drave u Dunav te u dijelu zapadnoga Srijema i sjeverozapadne Bačke (Tasić 1994: 12).

Groblja daljske grupe rasprostranjena na području istočne Slavonije, Baranje, zapadnoga Srijema i zapadne Bačke datiraju se od početka 10. st. p. Kr., kada počinju i njima srodna groblja tipa Ruše i Stillfried, a traju do 3. st. pr. Kr. i početka mlađega željeznog doba (Vinski-Gasparini 1978: 135). Na osnovi do sada poznatoga fundusa grobova K. Vinski-Gasparini pokušala je podijeliti razvojni tijek daljske grupe na stupnjeve od kojih prvi (10. do 8. st. pr. Kr.) pripada mlađoj kulturi polja sa žarama; drugi (kraj 8. do početka 6. st. pr.

PERIODIZATION OF THE DALJ GROUP

Finds from Dalj and Batina (Kiskőszeg) were first singled out by V. G. Childe within the “Pannonian group,” which he saw as the result of the Danube region’s response to western influences (Childe 1929: 407–409). Cemeteries of the Dalj–Batina type, such as Dalj and Vukovar, were designated by K. Vinski-Gasparini in 1973 as *the southern branch of related Danubian necropolises in Transdanubia and Lower Austria* within the Urnfield culture, which begin to appear in the fourth phase of her periodization of the Urnfield culture in northern Croatia (Vinski-Gasparini 1973: 22). These cemeteries continue into the Ha C stage, but from the middle of the 8th century BC new elements become apparent in them, which can be compared with the inventories of hoards of the fifth phase in this region (Adaševci, Šarengard). The presence of new forms of the so-called Thraco-Cimmerian sphere and the Ha C period marks the end of the Urnfield culture in the Croatian Danube region (Vinski-Gasparini 1973: 22). She points out that the Dalj group arose through the expansion of the Vál group from northeastern Transdanubia southwards into the peripheral zone of the Zagreb group of the Urnfield culture, which was under the influence of Gáva pottery (Vinski-Gasparini 1983: 615). The territory of the Dalj group extends over a narrow area of the Croatian Danube region from Baranja to western Syrmia, mainly along the right bank of the Danube, while in Bačka it also encompassed the left bank. Finds could also be expected in Hungarian Baranja, but the finds to date do not provide more precise information on this matter (Vinski-Gasparini 1983: 601). N. Tasić, however, maintains that the Dalj group can be traced from Hungarian-Croatian Baranja – specifically in the north from a line south of the Mecsek Mountains to the mouth of the Drava into the Danube – as well as in part of western Syrmia and northwestern Bačka (Tasić 1994: 12).

Cemeteries of the Dalj group, distributed across eastern Slavonia, Baranja, western Syrmia, and western Bačka, date from the beginning of the 10th century BC – when related cemeteries of the Ruše and Stillfried types also begin to appear – and continue until the 3rd century BC and the beginning of the Late Iron Age (Vinski-Gasparini 1978: 135). Based on the currently known grave inventory, K. Vinski-Gasparini attempted to divide the developmental course of the Dalj group into phases: the first (10th to 8th century BC) belongs

Kr.) vremenu manjih migracija i prodora novoga stanovništva te asimilaciji starosjeditelja s novopridošlim zajednicama; treći (od početka 6. i 5 st. pr. Kr.) obilježavaju novi impulsi grčko-helenističkih utjecaja, dok je za posljednji četvrti stupanj (4. st. pr. Kr.) karakteristični jaki keltski utjecaj bez etničkoga prisustva Kelta (Vinski-Gasparini 1978: 138, sl. 3–4).

O daljskoj grupi pisao je R. Vasić u svesku V Praistorije jugoslavenskih zemalja, pri čemu sažima podatke koje je K. Vinski-Gasparini objavila u Praistoriji jugoslavenskih zemalja IV te ističe dataciju starije faze daljske grupe od 10. do 7. st. pr. Kr. (Vasić 1987: 533). Tom je prilikom R. Vasić jasno istaknuo nove utjecaje od prve polovice 6. st. pr. Kr. i najavio da *nova istraživanja na ovom prostoru daće verovatno odgovore na postavljena pitanja* (Vasić 1987: 534–535). N. Tasić predlaže da se daljska grupa naziva kultura Dalj-Doroslovo, budući da je Doroslovo najveće sustavno istraženo groblje grupe do sada i odgovara kronološkome rasponu daljske grupe od Ha A2 vremena do kraja Ha C (Tasić 1994: 12). On se nije složio s periodizacijom daljske grupe K. Vinski-Gasparini i istaknuo je kako je ona trajala do prijelaza 7. u 6. st. pr. Kr., a ne sve do dolaska Kelta (Tasić 1994: 18).

Područje «jugoistočne Panonske nizine», odnosno područje jugoistočne Transdanubije, Baranje i istočne Slavonije, u vrijeme daljske grupe proučavala je C. Metzner-Nebelsick u sklopu svoga magisterija te kasnije disertacije. Na osnovi tipološke analize nalaza s groblja Dalj-Busija i ostalih do tada objavljenih grobova daljske grupe podijelila je keramiku u šest horizonata (Metzner-Nebelsick 1996). Prva dva horizonta (horizonti I, II) pripadaju kulturi polja sa žarama, a ostali horizonti (horizonti IIIa, IIIb, IV, V) starijem željeznom dobu (Metzner-Nebelsick 1996: 285–286). Kronološku razdiobu prema keramičkim oblicima, ukrasima i veličini posuda autorica je napravila uzevši u obzir i metalne nalaze u sačuvanim grobnim cjelinama (Metzner-Nebelsick 2002: 88–181). Jugoistočnopanonsku grupu/grupu Dalj C. Metzner-Nebelsick datira od početka Ha B stupnja (1000. g. pr. Kr.) do početka 5. st. pr. Kr. (2002: 167–179, Abb. 78; 2017: 350 Fig. 1–2). R. Vasić groblje u Doroslovu također pripisuje grupi Dalj te ističe sličnosti i razlike u unutarnjoj kronologiji u odnosu na nalaze iz Batine, Dalja i Vukovara Lijeve Bare na kojima je C. Metzner-Nebelsick

to the late Urnfield culture; the second (end of the 8th to the beginning of the 6th century BC) corresponds to a time of minor migrations and influxes of new populations, as well as the assimilation of the indigenous population with the newly arrived communities; the third (beginning of the 6th and 5th century BC) is marked by new impulses from Greek-Hellenistic influences; and the final, fourth phase (4th century BC) is characterized by strong Celtic influence without the ethnic presence of the Celts (Vinski-Gasparini 1978: 138, Figs. 3–4).

R. Vasić wrote about the Dalj group in Volume V of *The Prehistory of Yugoslav Lands*, summarizing the data published by K. Vinski-Gasparini in *The Prehistory of Yugoslav Lands IV*, and emphasizing the dating of the older phase of the Dalj group from the 10th to 7th century BC (Vasić 1987: 533). On that occasion, R. Vasić clearly highlighted new influences from the first half of the 6th century BC and anticipated that *future research in this region would likely provide answers to the questions raised* (Vasić 1987: 534–535). N. Tasić proposes that the Dalj group be named the Dalj-Doroslovo culture, given that Doroslovo is the largest systematically excavated cemetery of the group to date and corresponds to the chronological span of the Dalj group from Ha A2 to the end of Ha C (Tasić 1994: 12). He disagrees with K. Vinski-Gasparini's periodization of the Dalj group and emphasizes that it lasted until the transition from the 7th to the 6th century BC, rather than until the arrival of the Celts (Tasić 1994: 18).

The area of the "southeastern Pannonian Plain", specifically the region of southeastern Transdanubia, Baranja, and eastern Slavonia, during the time of the Dalj group, was studied by C. Metzner-Nebelsick as part of her master's thesis and later her dissertation. Based on a typological analysis of finds from the Dalj-Busija cemetery and other previously published graves of the Dalj group, she divided the pottery into six horizons (Metzner-Nebelsick 1996). The first two horizons (Horizons I and II) belong to the Urnfield culture, while the remaining horizons (Horizons IIIa, IIIb, IV, and V) correspond to the Early Iron Age (Metzner-Nebelsick 1996: 285–286). The author established this chronological classification based on ceramic forms, decorations, and vessel sizes, while also taking into account metal finds from preserved burial complexes (Metzner-Nebelsick 2002: 88–181). C. Metzner-Nebelsick dates the southeastern Pannonian (Dalj) group from the beginning of the Ha B phase (1000 BC) to the beginning of the 5th century BC (2002: 167–179, Abb. 78; 2017: 350 Fig.

gradila svoju kronologiju (Vasić 2008: 346–353). U objavama groblja iz Sotina (Ložnjak Dizdar 2019a) i Batine (Dizdar et al. 2021) koristi se predložena periodizacija C. Metzner-Nebelsick (2002), uz radiokarbonsko datiranje (Ložnjak Dizdar et al. in print).

ODNOS DALJSKE I BOSUTSKE GRUPE

K. Vinski-Gasparini je držala kako se daljska grupa ne može ograničiti na područje Baranje i krajnje istočne Slavonije te da će se budućim istraživanjima utvrditi obuhvaća li ona, osim zapadnoga Srijema, i ostalo područje srijemskoga Podunavlja ili se tu može izdvojiti posebna bosutska grupa (Vinski-Gasparini 1978: 135). Pri definiranju susjedne bosutske grupe N. Tasić nije mogao odrediti granice nove kulturne pojave (Tasić 1971: 67). Zapadna granica bosutske grupe određena je linijom Vinkovci – Osijek, a sjeverna u Bačkoj linijom južna Bačka – Zrenjanin (Tasić 1974: 269, T. XXIX). Bosutska grupa u svojoj najranijoj fazi zahvaća područje Vojvodine, izuzevši prostor zapadne Bačke, smatra P. Medović koji uočava sličnost metalnih nalaza bosutske i daljske grupe te utjecaj faze Bosut IIIa na ukrasu posude iz Dalja (Medović 1978: 46). Južnom granicom daljske kulture N. Tasić je označio liniju Vukovar – Županja, a područje između Vukovara i Šida prijelaznom zonom između bosutske i daljske kulture, o čemu svjedoče nalazi iz Šarengrada i Iloka (Tasić 1979: 9–10. T. I; III). K. Vinski-Gasparini južnu i istočnu granicu daljske grupe označava linijom Šaregrad – rijeka Mostonga u Bačkoj, pri čemu se djelomice objavljeni nalazi s nalazišta Šaregrad – Removo pripisuju po obilježjima daljskoj grupi (Vinski-Gasparini 1983: 602).

U novije vrijeme N. Tasić smatra kako je teško precizno razgraničiti daljsku i bosutsku grupu te drži da je rana daljska grupa zahvatila i dio područja zapadnoga Srijema na kojoj se kasnije razvija bosutska grupa. Ostave iz Adaševaca i Iloka mogu se pripisati i bosutskoj grupi jer je područje na kojoj su pronađene granično (Tasić 1994: 12). Granica između grupe Dalj i Bosut naznačena je između Vukovara i Iloka (Ložnjak Dizdar 2004: 25), a istraživanjima prapovijesnoga groblja u Sotinu (Ložnjak Dizdar 2019a) ta je granica poblizje definirana između Sotina i Iloka. Zajednička

1–2). R. Vasić also attributes the Doroslovo cemetery to the Dalj group and highlights similarities and differences in internal chronology in relation to finds from Batina, Dalj, and Vukovar Lijeva Bara, on which C. Metzner-Nebelsick based her own chronological framework (Vasić 2008: 346–353). The publications of the cemeteries from Sotin (Ložnjak Dizdar 2019a) and Batina (Dizdar et al. 2021) also employ the periodization proposed by C. Metzner-Nebelsick (2002), supplemented with radiocarbon dating (Ložnjak Dizdar et al. forthcoming).

THE RELATIONSHIP BETWEEN THE DALJ AND BOSUT GROUPS

K. Vinski-Gasparini maintained that the Dalj group could not be limited to the territory of Baranja and the easternmost part of Slavonia, and that future research would determine whether, apart from western Sylvania, it also encompasses the rest of the Sylvania Danube region, or whether a distinct Bosut group could be defined there (Vinski-Gasparini 1978: 135). When defining the neighbouring Bosut group, N. Tasić was unable to establish the boundaries of this new cultural phenomenon (Tasić 1971: 67). The western boundary of the Bosut group was defined by the Vinkovci–Osijek line, and the northern by the southern Bačka–Zrenjanin line (Tasić 1974: 269, Pl. XXIX). According to P. Medović, the Bosut group in its earliest phase encompassed the territory of Vojvodina, excluding the area of western Bačka; he notes the similarity between the metal finds of the Bosut and Dalj groups, as well as the influence of the Bosut IIIa phase on the decoration of a vessel from Dalj (Medović 1978: 46). N. Tasić designated the Vukovar–Županja line as the southern boundary of the Dalj culture, and the area between Vukovar and Šid as a transitional zone between the Bosut and Dalj cultures, as evidenced by finds from Šaregrad and Ilok (Tasić 1979: 9–10, Pl. I; III). K. Vinski-Gasparini defined the southern and eastern boundaries of the Dalj group along the Šaregrad–Mostonga River line in Bačka, assigning the partly published finds from the Šaregrad–Removo site to the Dalj group based on their characteristics (Vinski-Gasparini 1983: 602).

In more recent times, N. Tasić has considered it difficult to precisely delineate the Dalj and Bosut groups, maintaining that the early Dalj group also encompassed part of western Sylvania, where the Bosut group later developed. The hoards from Adaševci and Ilok can also be attributed to the Bosut group, as the area where they were found is borderline (Tasić 1994: 12). The boundary between the Dalj

osobina daljske i bosutske grupe u Podunavlju su i «tračkokimerijski» nalazi koji su osobito važni za prva stoljeća života obiju grupa (Metzner-Nebelsick 2005; Vasić, Kapuran 2007; Ložnjak Dizdar 2019b).

GROBOVI S LIJEVE BARE

GROB Ž27

Žarni grob Ž27 (T. 1), koji se nalazio u kvadrantu VI/13, istražen je u srpnju 1952. godine. Keramički set sastojao se od pet dobro očuvanih posuda: dva vrča, jedne dublje i jedne pliće zdjele te šalice.

1. Vrč zaobljenoga trbuha ukrašenoga okomitim kanelurama s naglašenim prijelazom u stožasti vrat izvučenoga ruba, ravnog dna. Manja trakasta drška spaja trbuh i donji dio vrata posude. Stjenke su sivo-smeđe boje. Visina posude je 16,9 cm, a promjer ruba 10,1 cm (T. 1: 1).

2. Vrč zaobljenoga trbuha ukrašenoga okomitim kanelurama, sa stožastim vratom izvučenoga ruba i omphalos dna. Trakasta drška spaja trbuh i donji dio vrata posude. Stjenke su sivo-smeđe boje. Visina posude je 10,3 cm, a promjer ruba 11,4 cm (T. 1: 2).

3. Zdjela zaobljenoga tijela, blago izvučenoga ruba, omphalos dna s manjom okomitom, neperforiranom drškom. Stjenke su smeđe-sive boje. Visina posude je 7,4 cm, a promjer ruba 14,3 cm (T. 1: 3).

4. Zdjela zaobljenoga tijela, uvučenoga koso kaneliranoga ruba i omphalos dna. Stjenke su oker sive boje. Visina posude je 5,5 cm, a promjer ruba 19 cm (T. 1: 4).

5. Šalica zaobljenoga tijela s ravnim rubom i trakastom drškom koja nedostaje, a nadvisivala je rub posude. Stjenke su smeđe-sive boje. Visina posude je 5,8 cm, a promjer ruba 11,7 cm (T. 1: 5).

GROB Ž75

Žarni grob Ž75 (T. 2–3), koji se nalazio u kvadrantu XIV/17, istražen je 17. kolovoza 1953. godine. Keramički set priložen u grob znatno je bio uništen, pri čemu su rekonstruirane tri posude – dva lonca i plitka zdjela – a prikupljeni su i ulomci plitke zdjele ukrašenoga oboda te dno posude. Uz keramičke posude, u grobu su se nalazili i metalni predmeti: dvopetljasta lučna fibula s kuglicama na luku, željezni pršljen, četiri željezne i staklene (?) perle (T. 3).

and Bosut groups was indicated between Vukovar and Ilok (Ložnjak Dizdar 2004: 25), and excavations of the prehistoric cemetery at Sotin (Ložnjak Dizdar 2019a) have more precisely defined this boundary between Sotin and Ilok. A common feature of the Dalj and Bosut groups in the Danube region is also the presence of "Thraco-Cimmerian" finds, which are particularly important for the first centuries of the existence of both groups (Metzner-Nebelsick 2005; Vasić, Kapuran 2007; Ložnjak Dizdar 2019b).

GRAVES FROM LIJEVA BARA

GRAVE Ž27

Urn grave Ž27 (Pl. 1), located in quadrant VI/13, was excavated in July 1952. The ceramic set consisted of five well-preserved vessels: two jugs, one deeper bowl, one shallower bowl, and a cup.

1. Jug with a rounded belly decorated with vertical fluting, with a pronounced transition into a conical neck with an everted rim, and a flat base. A small strap handle connects the belly and the lower part of the vessel's neck. The walls are grey-brown. The height of the vessel is 16.9 cm, and the rim diameter is 10.1 cm (Pl. 1: 1).

2. Jug with a rounded belly decorated with vertical fluting, with a conical neck with an everted rim and an omphalos base. A strap handle connects the belly and the lower part of the vessel's neck. The walls are grey-brown. The height of the vessel is 10.3 cm, and the rim diameter is 11.4 cm (Pl. 1: 2).

3. Bowl with a rounded body, a slightly everted rim, and an omphalos base with a small vertical, unperforated handle. The walls are brown-grey. The height of the vessel is 7.4 cm, and the rim diameter is 14.3 cm (Pl. 1: 3).

4. Bowl with a rounded body, an inverted obliquely fluted rim, and an omphalos base. The walls are ochre-grey. The height of the vessel is 5.5 cm, and the rim diameter is 19 cm (Pl. 1: 4).

5. Cup with a rounded body, a straight rim, and a strap handle (missing), which projected above the vessel rim. The walls are brown-grey. The height of the vessel is 5.8 cm, and the rim diameter is 11.7 cm (Pl. 1: 5).

GRAVE Ž75

Urn grave Ž75 (Pl. 2–3), located in quadrant XIV/17, was excavated on August 17, 1953. The ceramic set deposited in the grave was significantly disturbed, with three vessels reconstructed – two pots and a shallow bowl – while fragments of a shallow bowl with decorated rim and the base of

1. Lonac blago S-profiliranoga tijela, ravno-ga dna, ukrašen otiscima prstiju na rubu posude te plastičnom trakom s otiscima prstiju i četiri vodoravna funkcionalno-dekorativna dodatka na gornjem dijelu. Stjenke su oker-smeđe boje. Visina posude je 22,1 cm, a promjer ruba 22,4 cm (T. 2: 1).

2. Lonac zaobljenoga trbuha ukrašenoga okomitim kanelurama koji prelazi u oštećeni stožasti vrat. Rub nedostaje. Stjenke su crne boje. Visina sačuvanoga dijela posude je 18,3 cm (T. 2: 2).

3. Veća zdjela stožastoga tijela i uvučeno-ga, neukrašenoga ruba, ravnoga dna. Stjenke su sivo-smeđe boje. Visina posude je 12,2 cm, a promjer ruba 39,3 cm (T. 2: 3).

4. Dio dna i trbuha posude. Stjenke su oker-sive boje. Dimenzije ulomka su 19,5 x 13,2 cm (T. 3: 1).

5. Dio zdjele zaobljenoga trbuha i snažno izvučenoga ruba na kojemu se nalazi ukras u obliku šrafiranih trokuta izvedenih urezivanjem. Stjenke su oker-sive boje. Dimenzije ulomka su 18,6 x 9,6 cm (T. 3: 2).

6. Željezna dvopetljasta fibula s trokutastom širokom nožicom i tri dugmeta na luku koji su ukrašeni vodoravnim urezima ispunjenim lamelama od bakrene slitine. Fibula ima ojačanje od bakrene slitine na petlji iznad trokutaste nožice koje je ukrašeno urezanim linijama. Dužina fibule je 7,1 cm, a visina 4,8 cm (T. 3: 3).

7. Željezni okrugli pršljen. Promjer pršljena je 3 cm, a debljina 1,2 cm (T. 3: 4).

8. Oštećena željezna perla s tri izbočenja ukrašena urezanim linijama. Promjer perle je 1,4 cm, a debljina 0,7 cm (T. 3: 5).

9. Okrugla željezna perla. Promjer perle je 1,1 cm, a debljina 0,7 cm (T. 3: 6).

10. Oštećena okrugla željezna perla. Promjer perle je 1,4 cm, a debljina 1,4 cm (T. 3: 7).

11. Oštećena okrugla željezna perla. Promjer perle je 1,4 cm, a debljina 1 cm (T. 3: 8).

12. Keramička perla cilindričnoga oblika, sivo-smeđe boje. Promjer perle je 2 cm, a debljina 1 cm (T. 3: 9).

13. Oštećena perla cilindričnoga oblika izrađena od bijeloga stakla (fajanse?). Promjer perle je 1,4 cm, a debljina 1,4 cm (T. 3: 10).

GROB Ž79

Žarni grob Ž79 (T. 4), koji se nalazio u kvadrantu XIV/13, istražen je 19. kolovoza 1953. godine. Keramički set sastojao se od četiri

a vessel were also collected. Along with the ceramic vessels, the grave contained metal objects: a double-looped bow fibula with knobs on the bow, an iron whorl, four iron beads and ceramic and glass (?) bead (Pl. 3).

1. Pot with a slightly S-profiled body and flat base, decorated with finger impressions on the vessel rim, as well as a relief band with finger impressions and four functional-decorative lugs on the upper part. The walls are ochre-brown. The height of the vessel is 22.1 cm, and the rim diameter is 22.4 cm (Pl. 2: 1).

2. Pot with a rounded belly decorated with vertical fluting, transitioning into a damaged conical neck. The rim is missing. The walls are black. The height of the preserved part of the vessel is 18.3 cm (Pl. 2: 2).

3. Large bowl with a conical body, an inverted undecorated rim, and a flat base. The walls are grey-brown. The height of the vessel is 12.2 cm, and the rim diameter is 39.3 cm (Pl. 2: 3).

4. Part of the base and belly of a vessel. The walls are ochre-grey. The dimensions of the fragment are 19.5 x 13.2 cm (Pl. 3: 1).

5. Part of a bowl with a rounded belly and a sharply everted rim featuring a decoration of hatched triangles executed by incision. The walls are ochre-grey. The dimensions of the fragment are 18.6 x 9.6 cm (Pl. 3: 2).

6. Iron double-looped fibula with a broad triangular foot and three knobs on the bow, which are decorated with horizontal incisions inlaid with copper alloy strips. The fibula features a copper alloy reinforcement on the loop above the triangular foot, decorated with incised lines. The length of the fibula is 7.1 cm, and the height is 4.8 cm (Pl. 3: 3).

7. Iron circular whorl. The diameter of the whorl is 3 cm, and the thickness is 1.2 cm (Pl. 3: 4).

8. Damaged iron bead with three protuberances decorated with incised lines. The diameter of the bead is 1.4 cm, and the thickness is 0.7 cm (Pl. 3: 5).

9. Round iron bead. The diameter of the bead is 1.1 cm, and the thickness is 0.7 cm (Pl. 3: 6).

10. Damaged round iron bead. The diameter of the bead is 1.4 cm, and the thickness is 1.4 cm (Pl. 3: 7).

11. Damaged round iron bead. The diameter of the bead is 1.4 cm, and the thickness is 1 cm (Pl. 3: 8).

12. Cylindrical ceramic bead, grey-brown in colour. The diameter of the bead is 2 cm, and the thickness is 1 cm (Pl. 3: 9).

13. Damaged cylindrical bead made of white glass (faience?). The diameter of the bead is 1.4 cm, and the thickness is 1.4 cm (Pl. 3: 10).

posude: vrča, dvaju plićih zdjela i šalice.

1. Zdjela zaobljenoga tijela, uvučenoga koso kaneliranoga ruba i omphalos dna. S unutarnje strane posude na dnu se nalazi ukras u obliku četiri polja ispunjena okomitim i vodoravnim linijama izvedenima žlijebljenjem. Stjenke su oker-sivo-smeđe boje. Visina posude je 7 cm, a promjer ruba 13,3 cm (T. 4: 1).

2. Vrč zaobljenoga trbuha ukrašenoga okomitim kanelurama, stožastoga vrata s izvučenim rubom i omphalos dna. Trakasta ručka spaja trbuh i donji dio vrata posude. Stjenke su sivo-smeđe boje. Visina posude je 14,9 cm, a promjer ruba 17,9 cm (T. 4: 2).

3. Zdjela zaobljenoga tijela, uvučenoga koso kaneliranoga ruba i ravnoga dna s jednom okomito postavljenom perforiranom drškom. S unutarnje strane posude na dnu se nalazi plastično oblikovan ukras spirale. Stjenke su sivo-smeđe boje. Visina posude je 7,6 cm, a promjer ruba 13,2 cm (T. 4: 3).

4. Manja zdjela zaobljenoga tijela, izvučenoga ruba i blago konveksnoga dna s jednom vodoravnom trakastom i perforiranom drškom. Stjenke su sive boje. Visina posude je 5,3 cm, a promjer oboda 11 cm (T. 4: 4).

GROB Ž80

Žarni grob Ž80 (T. 5), koji se nalazio u kvadrantu XIV/13, istražen je 19. kolovoza 1953. godine. Keramički set sastojao se od jedanaest posuda prema terenskoj fotografiji groba Ž80 *in situ*, od kojih se osam danas čuva u Arheološkome muzeju u Zagrebu: dva lonca, vrč, tri zdjele i dvije šalice.

1. Lonac zaobljenoga tijela i izvučenoga ruba, prstenastoga dna. Stjenke su oker-sivo-smeđe boje. Visina posude je 16,3 cm, a promjer oboda 12,4 cm (T. 5: 1).

2. Vrč zaobljenoga trbuha ukrašenoga okomitim kanelurama, stožastoga vrata s izvučenim rubom i omphalos dna. Trakasta ručka spaja trbuh i donji dio vrata posude. Stjenke su smeđe boje. Visina posude je 12,5 cm, a promjer ruba 10,9 cm (T. 5: 2).

3. Lonac zaobljenoga trbuha, stožastoga vrata s izvučenim rubom i ravnoga dna. Stjenke su sive boje. Visina posude je 16,8 cm, a promjer ruba 9,3 cm (T. 5: 3).

4. Zdjela zaobljenoga tijela, uvučenoga koso kaneliranoga ruba i omphalos dna. Stjenke su smeđe boje. Visina posude je 8,5 cm, a promjer ruba 19,2 cm (T. 5: 4).

GRAVE Ž79

Urn grave Ž79 (Pl. 4), located in quadrant XIV/13, was excavated on August 19, 1953. The ceramic set consisted of four vessels: a pot, two shallow bowls, and a cup.

1. Bowl with a rounded body, an inverted obliquely fluted rim, and an omphalos base. On the interior of the vessel, the base features a decoration of four fields filled with vertical and horizontal lines executed by grooving. The walls are ochre-grey-brown. The height of the vessel is 7 cm, and the rim diameter is 13.3 cm (Pl. 4: 1).

2. Jug with a rounded belly decorated with vertical fluting, a conical neck with an everted rim, and an omphalos base. A strap handle connects the belly and the lower part of the vessel's neck. The walls are grey-brown. The height of the vessel is 14.9 cm, and the rim diameter is 17.9 cm (Pl. 4: 2).

3. Bowl with a rounded body, an inverted obliquely fluted rim, and a flat base with one vertically positioned perforated handle. On the interior of the vessel, the base features a relief decoration of a spiral. The walls are grey-brown. The height of the vessel is 7.6 cm, and the rim diameter is 13.2 cm (Pl. 4: 3).

4. Smaller bowl with a rounded body, an everted rim, and a slightly convex base with one horizontal perforated strap handle. The walls are grey. The height of the vessel is 5.3 cm, and the rim diameter is 11 cm (Pl. 4: 4).

GRAVE Ž80

Urn grave Ž80 (Pl. 5), located in quadrant XIV/13, was excavated on August 19, 1953. The ceramic set consisted of eleven vessels according to the field photograph of grave Ž80 *in situ*, eight of which are preserved today in the Archaeological Museum in Zagreb: two pots, a jug, three bowls, and two cups.

1. Pot with a rounded body, an everted rim, and a ring foot. The walls are ochre-grey-brown. The height of the vessel is 16.3 cm, and the rim diameter is 12.4 cm (Pl. 5: 1).

2. Jug with a rounded belly decorated with vertical fluting, a conical neck with an everted rim, and an omphalos base. A strap handle connects the belly and the lower part of the vessel's neck. The walls are brown. The height of the vessel is 12.5 cm, and the rim diameter is 10.9 cm (Pl. 5: 2).

3. Pot with a rounded belly, a conical neck with an everted rim, and a flat base. The walls are grey. The height of the vessel is 16.8 cm, and the rim diameter is 9.3 cm (Pl. 5: 3).

4. Bowl with a rounded body, an inverted obliquely fluted rim, and an omphalos base. The

5. Zdjela zaobljenoga tijela i kratkoga, izvučenoga ruba i ravnoga dna. Stjenke su sivo-smeđe boje. Visina posude je 10,8 cm, a promjer oboda 16,5 cm (T. 5: 5).

6. Manja zdjela zaobljenoga tijela, uvučenoga koso kaneliranoga ruba, omphalos dna i s perforiranom drškom. Stjenke su sivo-smeđe boje. Visina posude je 4,8 cm, a promjer ruba 14 cm (T. 5: 6).

7. Šalica zaobljenoga trbuha, stožastoga vrata s blago izvučenim rubom, ručkom ovalnoga presjeka koja spaja trbuh i donji dio vrata posude te ravnoga dna. Stjenke su sivo-smeđe boje. Visina posude je 6,7 cm, a promjer ruba 7 cm (T. 6: 3).

8. Šalica zaobljenoga tijela, ravnoga ruba, omphalos dna i s ručkom ovalnoga presjeka koja nadvisuje rub posude. Stjenke su smeđe boje. Visina posude je 4,4 cm, a promjer ruba 11 cm (T. 6: 4).

GROB Ž92

Žarni grob Ž92 (T. 6), koji se nalazio u kvadrantu XII/6, istražen je 24. kolovoza 1953. godine. Keramički set sastojao se od dviju posuda – lonca i veće šalice.

1. Vrč zaobljenoga trbuha s naglašenim prijelazom prema stožastome vratu s izvučenim rubom i omphalos dna. Trakasta ručka spaja trbuh i donji dio vrata posude. Trbuh je ukrašen okomitim kanelurama. Stjenke su smeđe-crne boje. Visina posude je 12,3 cm, a promjer ruba 11,4 cm (T. 6: 1).

2. Šalica zaobljenoga tijela, ravnoga ruba i omphalos dna s trakastom ručkom koja nedostaje, a nadvisivala je rub posude. Dno s unutarnje strane posude ukrašeno je plastično izvedenim koncentričnim krugovima. Stjenke su smeđe-crne boje. Visina posude je 7,8 cm, a promjer ruba 15,4 cm (T. 6: 2).

ANTROPOLOŠKA ANALIZA

U svih pet grobova nađeni su ostaci spaljenih pokojnika koji su antropoloških analizirani krajem 2023. i početkom 2024. godine. Analiza ostataka napravljena je prema standardnoj proceduri, a obuhvatila je podatke o prisutnosti i očuvanosti pojedinih kosturnih elemenata, težinu kostiju, boji ostataka, minimalnome broju osoba, spolu i dobi te patološkim promjenama. Pri analizi su korištene standardne metode (Brickley, McKinley 2004; McKinley 2004).

walls are brown. The height of the vessel is 8.5 cm, and the rim diameter is 19.2 cm (Pl. 5: 4).

5. Bowl with a rounded body, a short everted rim, and a flat base. The walls are grey-brown. The height of the vessel is 10.8 cm, and the rim diameter is 16.5 cm (Pl. 5: 5).

6. Small bowl with a rounded body, an inverted obliquely fluted rim, an omphalos base, and a perforated handle. The walls are grey-brown. The height of the vessel is 4.8 cm, and the rim diameter is 14 cm (Pl. 5: 6).

7. Cup with a rounded belly, a conical neck with a slightly everted rim, an oval-sectioned handle connecting the belly and the lower part of the vessel's neck, and a flat base. The walls are grey-brown. The height of the vessel is 6.7 cm, and the rim diameter is 7 cm (Pl. 6: 3).

8. Cup with a rounded body, a straight rim, an omphalos base, and an oval-sectioned handle which projects above the vessel rim. The walls are brown. The height of the vessel is 4.4 cm, and the rim diameter is 11 cm (Pl. 6: 4).

GRAVE Ž92

Urn grave Ž92 (Pl. 6), located in quadrant XII/6, was excavated on August 24, 1953. The ceramic set consisted of two vessels: a pot and a large cup.

1. Jug with a rounded belly with a pronounced transition to a conical neck with an everted rim, and an omphalos base. A strap handle connects the belly and the lower part of the vessel's neck. The belly is decorated with vertical fluting. The walls are brown-black. The height of the vessel is 12.3 cm, and the rim diameter is 11.4 cm (Pl. 6: 1).

2. Cup with a rounded body, a straight rim, and an omphalos base with a strap handle (missing), which projected above the vessel rim. The interior of the base is decorated with relief concentric circles. The walls are brown-black. The height of the vessel is 7.8 cm, and the rim diameter is 15.4 cm (Pl. 6: 2).

ANTHROPOLOGICAL ANALYSIS

All five graves included cremated human remains, which were anthropologically analysed in late 2023 and early 2024. The analysis of the remains followed standard procedures and encompassed data on the presence and preservation of individual skeletal elements, bone weight, colour of the remains, minimum number of individuals, sex and age, as well as pathological changes. Standard methods were employed in the analysis (Brickley, McKinley 2004; McKinley 2004).

Grob Ž27

U uzorku su prisutni spaljeni ostaci jedne osobe ukupne težine 96,1 g. Najveći ulomak je veličine 55,4 mm i pripada tijelu duge kosti, dok je većina ostalih ulomaka oko 30 mm.

Među spaljenim ostacima bilo je moguće raspoznati ulomke kosti glave i dijelovi tijela dugih kostiju. Većina ulomaka je tamnosive boje, dok je manji dio crne. Na površini većine ulomaka prisutan je sloj sigovine, dok je nekoliko kostiju međusobno spojeno.

Analizirani ostaci pripadaju odrasloj osobi kojoj na osnovi prisutnih ulomaka nije bilo moguće detaljnije odrediti dob. Na prisutnim ulomcima nisu uočene patološke promjene.

Grob Ž75

U analiziranom uzorku su prisutni spaljeni ostaci jedne osobe ukupne težine 129,9 g. Najveći ulomak je veličine 71,5 mm i pripada tijelu duge kosti, dok je većina ostalih ulomaka između 20 i 30 mm.

Među ostacima bilo je moguće raspoznati ulomke kosti glave, dijelovi tijela dugih kostiju, tijela kralježaka i ulomci tijela rebara. U uzorku nisu bili prisutni dijelovi svih kostiju u tijelu, nedostaju kosti šake i stopala. Većina ulomaka je svijetlosive boje, dok je manji dio sive.

Analizirani ostaci pripadaju odrasloj osobi kojoj na osnovi prisutnih ulomaka nije bilo moguće detaljnije odrediti dob. Osoba je ženskoga spola na osnovi morfološki karakteristika kostiju lubanje (oštriji rub očnica) i dimenzija prisutnih kostiju (manji promjeri glave palčane i nadlaktične kosti). Na prisutnim ulomcima nisu uočene patološke promjene.

Grob Ž79

U uzorku su prisutni spaljeni ostaci jedne osobe ukupne težine 104 g. Najveći ulomak je veličine 63,2 mm i pripada tijelu duge kosti, dok je većina ostalih ulomaka oko 40 mm. Prisutni ulomci dugih kostiju su crne boje, glave bijele, a kosti trupa sive. Vanjska površina kostiju na sebi ima hrapavi sloj koji je nastao pod utjecajem okolišnih čimbenika tijekom spaljivanja ili nakon što su kosti položene u žaru. Ulomci koji su se mogli raspoznati su: ulomci kosti glave, dijelovi tijela dugih kostiju, tijelo kralješka, dio pubične kosti, ulomak rebra i lopatice. Među ulomcima nisu bili prisutni ulomci kostiju šake i stopala.

Grave Ž27

The sample contains the cremated remains of one individual with a total weight of 96.1 g. The largest fragment measures 55.4 mm and belongs to the shaft of a long bone, while most other fragments are around 30 mm in size.

Among the cremated remains, it was possible to identify fragments of cranial bones and parts of long bone shafts. Most fragments are dark grey in colour, with a smaller portion being black. A layer of sinter is present on the surface of most fragments, while several bones are cemented together.

The analysed remains belong to an adult individual whose age could not be determined more precisely based on the available fragments. No pathological changes were observed on the available fragments.

Grave Ž75

The analysed sample contains the cremated remains of one individual with a total weight of 129.9 g. The largest fragment measures 71.5 mm and belongs to the shaft of a long bone, while most other fragments range between 20 and 30 mm.

Among the remains, it was possible to identify fragments of cranial bones, parts of long bone shafts, vertebra shafts, and fragments of rib shafts. Not all bones of the body were present in the sample; hand and foot bones were missing. Most fragments are light grey, with a smaller portion being grey.

The analysed remains belong to an adult individual whose age could not be determined more precisely based on the available fragments. The individual is female, as indicated by the morphological characteristics of the cranial bones (sharper orbital margin) and dimensions of available bones (smaller diameters of the head of the radius and humerus). No pathological changes were observed on the available fragments.

Grave Ž79

The sample contains the cremated remains of one individual with a total weight of 104 g. The largest fragment measures 63.2 mm and belongs to the shaft of a long bone, while most other fragments are around 40 mm in size. The available long bone fragments are black, the cranial bones are white, and the trunk bones are grey. The outer surfaces of the bones have a rough layer that formed under the influence of environmental factors either during cremation or after the bones were deposited in the urn. Identifiable fragments include: cranial bone frag-

Analizirani ostaci pripadaju odrasloj osobi kojoj na osnovi prisutnih ulomaka nije bilo moguće detaljnije odrediti dob. Osoba je muškoga spola na osnovi morfoloških karakteristika zdjelične kosti koja ima širi ishiopubični ramus i većih dimenzija promjera glave palčane kosti. Na prisutnim ulomcima nisu uočene patološke promjene.

Grob Ž80

U uzorku su prisutni spaljeni ostaci jedne osobe ukupne težine 17 g. Najveći ulomak je dio tijela duge kosti veličine 34,5 mm, dok je većina ostalih ulomaka između 15 i 20 mm. Među ulomcima mogu se raspoznati oni koji pripadaju kostima glave i dugim kostima. Većina ulomaka je sive boje, dok su oni koji pripadaju kostima glave bijele. Prisutni ostaci pripadaju osobi dječje dobi, starijoj od 12 godina i mlađoj od 18. Dob je određena na osnovi prisutne glave palčane kosti bez srasle epifize i očuvane donje čeljusti. Epifiza glave palčane kosti sraštava između 12 i 16 godine kod djevojčica, a 14 i 18 godine kod dječaka. U donjoj čeljusti, iako nema prisutnih zubi, vidljive su alveole za trajne sjekutiće, očnjake i pretkutnjake. Svi navedeni zubi izniknu do otprilike 12 godine života, pa je osoba starija od te dobi. Na prisutnim ulomcima nisu uočene patološke promjene.

Grob Ž92

U uzorku su prisutni spaljeni ostaci jedne osobe ukupne težine 75 g. Najveći ulomak je veličine 57,1 mm i pripada tijelu duge kosti, dok je većina ostalih ulomaka oko 25 mm. Većina ulomaka je sive boje, dok je manji dio tamnosive. Među prisutnim ostacima mogli su se raspoznati ulomci kosti glave, dijelovi dugih kostiju, ulomci tijela rebara i nekoliko falangi.

Ostaci pripadaju odrasloj osobi kojoj na osnovi prisutnih ulomaka nije bilo moguće detaljnije odrediti dob i spol. Na ulomku kosti lubanje uočena je dodatna koštana pločica. Dodatne koštane pločice su ulomci kosti u lubanjskim šavovima. Njihov nastanak je povezan s naprežanjem duž lubanjskih šavova do kojega dolazi tijekom mineralizacije i sazrijevanja kosti (Barnes 2012).

S obzirom na malu količinu ostataka, podaci dobiveni analizom su skromni. Kod većine osoba bilo je moguće odrediti da se radi o odraslim osobama, no dob ni spol nisu se

ments, parts of long bone shafts, a vertebral shaft, a portion of the pubic bone, and a fragment of a rib and scapula. No fragments of hand or foot bones were present among the remains.

The analysed remains belong to an adult individual whose age could not be determined more precisely based on the available fragments. The individual is male, as indicated by the morphological characteristics of the pelvic bone, specifically the broader ischiopubic ramus, and the larger dimensions of the radial head diameter. No pathological changes were observed on the available fragments.

Grave Ž80

The sample contains the cremated remains of one individual with a total weight of 17 g. The largest fragment is part of a long bone shaft measuring 34.5 mm, while most other fragments range between 15 and 20 mm. Among the fragments, those belonging to cranial bones and long bones can be identified. Most fragments are grey in colour, while those belonging to cranial bones are white. The available remains belong to an individual of juvenile age, older than 12 and younger than 18 years. The age estimation is based on the presence of the head of the radius without a fused epiphysis and a preserved mandible. The epiphysis of the radial head fuses between the ages of 12 and 16 in girls and between 14 and 18 in boys. Although the teeth are absent in the mandible, alveoli for permanent incisors, canines, and premolars are visible. All these teeth erupt by approximately 12 years of age, indicating that the individual was older than this. No pathological changes were observed on the available fragments.

Grave Ž92

The sample contains the cremated remains of one individual with a total weight of 75 g. The largest fragment measures 57.1 mm and belongs to the shaft of a long bone, while most other fragments are approximately 25 mm in size. Most fragments are grey in colour, with a smaller portion being dark grey. Among the present remains, identifiable fragments include cranial bones, parts of long bones, rib shaft fragments, and several phalanges.

The remains belong to an adult individual whose age and sex could not be determined more precisely based on the available fragments. A sutural bone was observed on a cranial bone fragment. Sutural bones are bone fragments located within cranial sutures. Their formation is associated with stress along the cranial sutures that occurs during bone mineralization and maturation (Barnes 2012).

mogli pobliže odrediti (Cavazzuti et al. 2019). Jedina odrasla osoba kojoj je bilo moguće odrediti spol je ona u grobu Ž75 za koju se, prema prisutnim ostacima, utvrdilo da je bila ženskoga spola. Izuzetak je i grob Ž80 u kojemu je, prema analizi, bila pokopana mlađa osoba u dobi od 12 do 18 godina.

APSOLUTNI DATUMI

Radiokarbonska analiza uzoraka spaljenih ljudskih kostiju iz grobova Ž75, Ž79, Ž80, Ž92 provedena je u laboratoriju u Debrecenu (Molnár et al. 2013a; 2013b; Major et al. 2019a; 2019b). Modeliranjem pojedinačnih datuma iz grobova dobivene su vrijednosti od druge polovice 9. do prve polovice 8. st. pr. Kr. (sl. 3). Rezultati mjerenja uzorka iz groba Ž79 daju vrijednosti najvjerojatnije oko 800 BC, dok su rezultati iz grobova Ž80 i Ž92 statistički jednaki i također pokazuju vrijednosti najvjerojatnije oko 800 BC. Srednje vrijednosti za Ž92 i Ž80 ukazuju na nešto starije doba (806. i 804. g. pr. Kr.), s nešto mlađom vrijednošću za Ž79 (784. g. pr. Kr.) (tab. 1).

Pojedinačno je radiokarbonski datum iz groba Ž75 najmlađi i najvjerojatnije nije stariji od oko 750 BC. Kalibrirana starost ovog uzorka neravnomjerno je raspoređena između kasnog 8. st. pr. Kr. (23,7 % vjerojatnosti) i nekoliko stoljeća mlađeg raspona (57,4 % vjerojatnosti) zbog platoa u kalibracijskoj krivulji (tab. 1). Tipična kronološka analiza nalaza iz groba Ž75 ukazuje na višu dataciju, pa smo skloni grob datirati u prvu polovicu 8. st. pr. Kr.

Given the small quantity of remains, the data obtained from the analysis are limited. For the majority of individuals, it was possible to determine that they were adults, but neither age nor sex could be determined more closely (Cavazzuti et al. 2019). The only adult individual for whom sex could be determined is the one in grave Ž75, who was identified as female based on the available remains. Another exception is grave Ž80, in which, according to the analysis, a juvenile individual aged 12 to 18 years was buried.

ABSOLUTE DATES

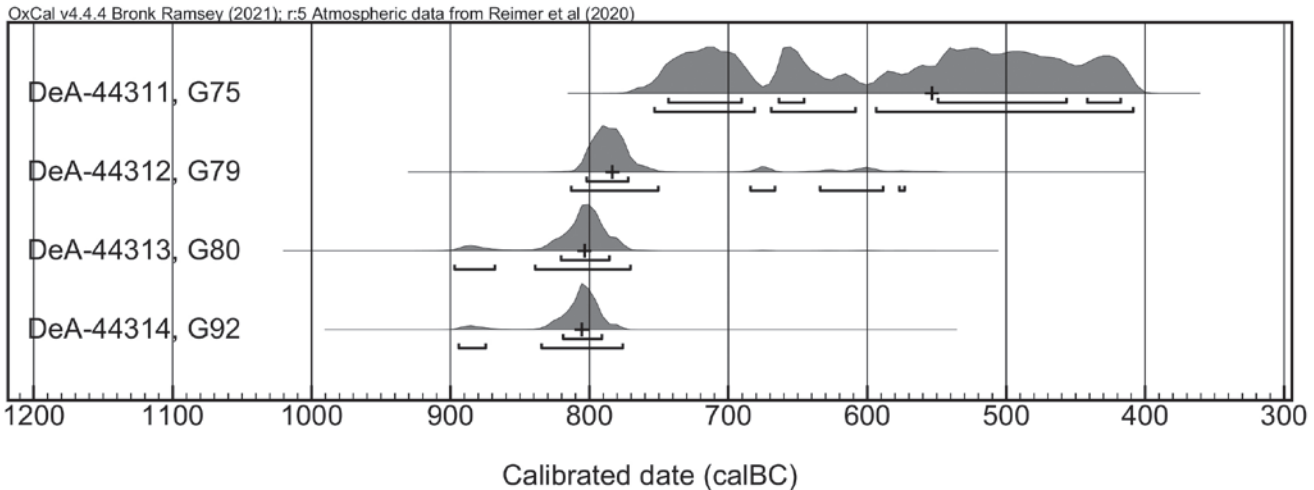
Radiocarbon analysis of samples of cremated human bones from graves Ž75, Ž79, Ž80, and Ž92 was conducted at Isotopech Zrt. laboratory in Debrecen (Molnár et al. 2013a; 2013b; Major et al. 2019a; 2019b). The modelled individual dates from these graves range from the second half of the 9th to the first half of the 8th century BC (Fig. 3). The measurement results for the sample from grave Ž79 provide values most likely around 800 BC, while the results for graves Ž80 and Ž92 are statistically identical and also show values most likely around 800 BC. The mean values for Ž92 and Ž80 indicate slightly older age (806 and 804 BC) with a slightly younger value for Ž79 (784 BC) (Tab. 1).

Individually, the radiocarbon date from grave Ž75 is the youngest and most likely not older than approximately 750 BC. The calibrated age of this sample is unevenly distributed between the late 8th century BC (23.7% probability) and several centuries younger age range (57.4% probability) due to the plateau in the calibration curve (Tab. 1). Typo-

Lab kod / Lab code	Kontekst / Context	Materijal / Material	14C starost (BP) / 14C age (BP)	Kalibrirana starost (cal BC) / Calibrated age (cal BC) (95.4% vjerojatnost / probability)	Srednja vrijednost / Median value
DeA-44311	Ž75 / G75	spaljena ljudska kost / cremated human bone	2445±34	754–594 (23.7%) 670–609 (14.3%) 594–409 (57.4%)	554 cal BC
DeA-44312	Ž79 / G79		2585±32	814–751 (84.5%) 685–574 (10.8%)	784 cal BC
DeA-44313	Ž80 / G80		2632±36	898–869 (6.6%) 840–771 (88.8%)	804 cal BC
DeA-44314	Ž92 / G92		2639±30	895–875 (4.9%) 835–777 (90.5%)	806 cal BC

Tab. 1 – Popis radiokarbonskih datuma. OxCal v4.4.4 (© Bronk Ramsey 2021; atmosferska krivulja IntCal20: Reimer et al. 2020; made by: K. Botić)

Tab. 1 – List of radiocarbon dates. OxCal v4.4.4 (© Bronk Ramsey 2021; atmospheric curve IntCal20: Reimer et al. 2020; made by: K. Botić)



Sl. 3 – Kalibrirani rasponi radiokarbonskih datuma s groblja Vukovar Lijeva Bara. Srednja vrijednost: + (© Bronk Ramsey 2021; atmosferska krivulja IntCal20: Reimer et al. 2020; izradila: K. Botić)

Fig. 3 – Calibrated ranges of the radiocarbon dates from the Vukovar Lijeva Bara cemetery. Median value: + (© Bronk Ramsey 2021; atmospheric curve IntCal20: Reimer et al. 2020; made by: K. Botić)

Vrijednosti dobivene radiokarbonskim datiranjem spaljenih ljudskih kostiju iz četiri groba iz Vukovara Lijeve Bare od druge polovice 9. do sredine 8. st. pr. Kr. dijelom se preklapaju s tipo-kronološkom analizom keramičkih i metalnih nalaza pronađenih u grobovima.

POGREBNI OBIČAJI

Spališta su rijetko otkrivena na prapovijesnim grobljima. K. Vinski-Gasparini pretpostavlja da bi jedna od struktura na rubu groblja mogla biti spalište. Radi se o zgarištu nepravilnoga kružnog promjera od 1,70 m s debelom naslagom gari i pepela te ulomcima keramike ispod kojih je bila zapečena zemlja (Vinski-Gasparini 1983: 610).

Paljevinski grobovi bili su različitih veličina, ovisno o broju keramičkih posuda koje su bile položene u grob. Grobne jame bile su kružnoga oblika najvećega promjera do 1,80 m (npr. grob Ž63). U grobnu jamu bili su položeni žara i uz nju druge keramičke posude složene na okupu. U žarama su se nalazile spaljene kosti pokojnika te spaljeni i čitavi dijelovi nošnje, nakita i osobnoga oruđa (npr. nožić, pršljen od vretena). U drugim keramičkim posudama različitih veličina i oblika – lonci, vrčevi, kantharosi i zdjele, do zdjelica, plitica, šalica i dr. – nalazili su se hrana i piće. Upravo te keramičke posude su najbrojniji grobni prilozi u grobovima iz kasnoga brončanog i starijega

chronological analysis of the finds from grave Ž75 suggests an older date, so the grave is tentatively dated to the first half of the 8th century BC.

The values obtained by radiocarbon dating of cremated human bones from four graves in Vukovar Lijeva Bara, ranging from the second half of the 9th to the middle of the 8th century BC, partially overlap with the typo-chronological analysis of the ceramic and metal finds found in those graves.

FUNERARY PRACTICES

Pyre sites are rarely discovered at prehistoric cemeteries. K. Vinski-Gasparini suggests that one of the structures on the edge of the cemetery could be a pyre. It consists of an irregularly circular burnt area with a diameter of 1.70 m, featuring a thick layer of soot and ash, as well as potsherds beneath which the soil was baked (Vinski-Gasparini 1983: 610).

Cremation graves varied in size depending on the number of ceramic vessels deposited in the grave. The grave pits were circular in shape, with a maximum diameter of up to 1.80 m (e.g., grave Ž63). The urn was placed in the grave pit along with other ceramic vessels arranged together nearby. The urns contained the cremated bones of the deceased as well as burnt and intact items of costume, jewellery, and personal tools (e.g., a small knife, a spindle whorl). Other ceramic vessels of various sizes and shapes – ranging from pots, jugs, kantharoi, and bowls, to small bowls,

željeznog doba na prostoru Podunavlja (Vinski-Gasparini 1983: 609–610; Metzner-Nebelsick 2002: 179–180, Abb. 79–80; Trajković 2008; Vasić 2008: 339–342).

Pet paljevinskih grobova koji su predstavljani ovom prilikom – Ž27, Ž75, Ž79, Ž80, Ž92 – sadrže od dvije do čak 11 posuda. U grobu Ž27 pronađeno je pet posuda – dva vrča, šalica i dvije zdjele (T. 1); u grobu Ž75 tri posude – dva lonca i zdjela (T. 2) i ulomke dvije posude (T. 3: 1–2); u grobu Ž79 četiri posude – vrč i tri zdjele (T. 4); u grobu Ž80 osam posuda – dva lonca, vrč, tri zdjele i dvije šalice³ (T. 5; T. 6: 3–4); u grobu Ž92 dvije posude – vrč i šalica (T. 6: 1–2). Samo u jednome grobu (Ž75) pronađeni su fibula, željezne, kamena i keramička perla te željezni pršljen (T. 3: 3–10).

Grobni prilozi

Keramičke posude

Lonci

U grobovima u Lijevoj Bari pronađena su tri tipa lonca sl. 4; T. 2: 1–2; 5: 1, 3): lonac zaobljenoga tijela i blago izvučenoga ruba (Ž80), zatim lonac blago S-profiliranoga tijela ukrašen otiscima prstiju na rubu posude te plastičnom trakom s otiscima prstiju i četiri funkcionalno-dekorativna dodatka na gornjem dijelu (Ž75) i lonac zaobljenoga tijela i stožastoga vrata u dvije varijante: s ukrasom okomitih kanelura na trbuhu posude (Ž75) i bez ukrasa (Ž80).

Lonac zaobljenoga tijela i blago izvučenoga ruba (Ž80: T. 5: 1) ima usporedbe u nalazima iz Batine (Metzner-Nebelsick 2002: T. 12: 13; 34: 1), Dalja (Hoffiller 1938: T. 11:7; Metzner-Nebelsick 2002: vinograd Panišić 1910, T. 86: 8) te iz groba 24 u Belišću (Ložnjak Dizdar 2014: 83, Pl. 1: 1) koji je radiokarbonski datiran u 9. st. pr. Kr.⁴ Ovaj tip lonca C. Metzner-Nebelsick pripisuje II keramičkom horizontu (2002: 169, Abb. 73: 10).

Lonac blago S-profiliranoga tijela ukrašen otiscima prstiju na rubu te plastičnom trakom s otiscima prstiju i četiri funkcionalno-dekorativna dodatka na gornjem dijelu (Ž75: T. 2:

shallow bowls, cups, etc. – contained food and drink. These ceramic vessels represent the most numerous grave goods in graves from the Late Bronze Age and Early Iron Age in the Danube region (Vinski-Gasparini 1983: 609–610; Metzner-Nebelsick 2002: 179–180, Abb. 79–80; Trajković 2008; Vasić 2008: 339–342).

The five cremation graves presented here – Ž27, Ž75, Ž79, Ž80, Ž92 – contain between two and as many as 11 vessels. In grave Ž27, five vessels were found: two jugs, a cup, and two bowls (Pl. 1); grave Ž75 contained three vessels: two pots and a bowl (Pl. 2) and sherds of two vessels (Pl. 3: 1–2); grave Ž79 had four vessels: a jug and three bowls (Pl. 4); grave 80 included eight vessels: two pots, jug, three bowls, and two cups³ (Pl. 5; Pl. 6: 3–4); and grave Ž92 had two vessels: a jug and a cup (Pl. 6: 1–2). Only one grave (Ž75) contained a fibula, iron beads, a stone bead, a ceramic bead, and an iron whorl (Pl. 3: 3–10).

Grave goods

Ceramic vessels

Pots

In the graves at Ljeva Bara, three types of pots were found (Fig. 4; Pl. 2: 1–2; 5: 1, 3): a pot with a rounded body and a slightly everted rim (Ž80); a pot with a slightly S-profiled body decorated with finger impressions on the vessel rim, as well as a relief band with finger impressions and four functional-decorative lugs on the upper part (Ž75); and a pot with a rounded body and conical neck with two variants: decorated with vertical fluting on the belly of the vessel (Ž75) and without decoration (Ž80).

The pot with a rounded body and a slightly everted rim (Ž80: Pl. 5: 1) has parallels in finds from Batina (Metzner-Nebelsick 2002: Pl. 12: 13; 34: 1), Dalj (Hoffiller 1938: Pl. 11:7; Metzner-Nebelsick 2002: Panišić vineyard 1910, Pl. 86: 8), and from grave 24 in Belišće (Ložnjak Dizdar 2014: 83, Pl. 1: 1), which is radiocarbon dated to the 9th century BC.⁴ C. Metzner-Nebelsick attributes this type of pot to ceramic horizon II (2002: 169, Fig. 73: 10).

The pot with a slightly S-profiled body decorated with finger impressions on the rim, as well as a relief

3 Usporedbom inventarne knjige Pretpovijesnoga odjela i stanja u depou zabilježeno je osam posuda, dok se na terenskoj fotografiji groba Ž80 nalazi veći broj posuda (11 posuda). U objavi groba Ž80 iz 1973. godine na tabli je predstavljeno osam cjelovitih posuda (Vinski-Gasparini 1973: T. 122: 1–8).

4 Belišće grob 24, DeA-16653, 2691± 30 BP (cal BC 900–800).

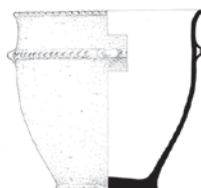
3 A comparison of the inventory book of the Prehistory Department and the current depot revealed eight vessels, whereas the field photograph of grave Ž80 shows a greater number of vessels (11 vessels). In the 1973 publication of grave Ž80, the plate illustrates eight complete vessels (Vinski-Gasparini 1973: Pl. 122: 1–8).

4 Belišće grave 24, DeA-16653, 2691± 30 BP (cal BC 900–800).

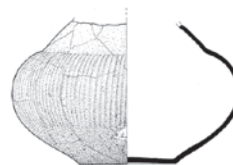
LONCI / POTS



G 80



G 75



G 75

VRČEVI / JUGS



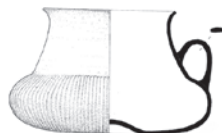
G 27



G 92



G 27



G 79

ZDJELE / BOWLS



G 80



G 27



G 79



G 79



G 80



G 79



G 27



G 80

ŠALICE / CUPS



G 80



G 92



G 80

Sl. 4 – Tipovi posuda iz grobova Ž27, Ž75, Ž79, Ž80, Ž92 (nacrtala: M. Galić; izradila: D. Ložnjak Dizdar)
Fig. 4 – Vessel types from graves Ž27, Ž75, Ž79, Ž80, Ž92 (drawn by: M. Galić; made by: D. Ložnjak Dizdar)

1) ima paralela u Batini (Metzner-Nebelsick 2002: T. 12: 14–15; 25A: 1; 25B: 9; 30: 10; Dizdar et al. 2021: grob 18, 118–121) i Dalju (Hoffiller 1938: T. 11: 4–5, 9; Metzner-Nebelsick 2002: vinograd Pavošević 1910, grob 16, T. 69: 3; vinograd Kraus, T. 76: 5; Daljska planina, vinograd Mišin, T. 87: 5; vinograd Pavošević 1910, T. 92: 1). Lonci takvoga tipa pojavljuju se već od 11 st. pr. Kr. npr. na groblju u Slatini te drugim grobljima mlađe faze kulture polja sa žarama u jugozapadnoj Panoniji i srednjem Podunavlju, a datiraju se u rasponu od Ha A do Ha C stupnja (Ložnjak Dizdar et al. 2018: 200, sl. 7: G6, G9).

Lonac zaobljenoga tijela i stožastoga vrata s ukrasom okomitih kanelura na truhu (Ž75: T. 2: 2) ima usporedbe u Dalju (Hoffiller 1938: T. 6: 3; 7: 3–4; Metzner-Nebelsick 2002: bez poznatoga položaja, T. 55: 8; vinograd Poštić 1909, grob 79, T. 60: 1; grob 81, T. 60: 8; vinograd Poštić 1909, grob 40, T. 80: 4; vinograd Poštić 1909, grob 96, T. 82: 1; vinograd Josipović, T. 96: 3) i u grobu Ž16 u Vukovaru Lijevoj Bari (Vinski-Gasparini 1973: T. 123: 4). Lonac s gusto kaneliranim truhom C. Metzner-Nebelsick pripisuje II keramičkom horizontu, s time da izdvojeni oblik ima malu trakastu ručku (2002: 169, Abb. 73: 5). Neukrašeni lonci zaobljenoga tijela i stožastoga vrata (Ž75, T. 5: 3) pronađeni su u Batini (Metzner-Nebelsick 2002: T. 44: 11) i Dalju, (Metzner-Nebelsick 2002: vinograd Poštić 1909, grob 11, T. 56: 3), a datirani su isto u II keramički horizont (Metzner-Nebelsick 2002: Abb. 73: 2–3).

Vrčevi

U grobovima u Lijevoj Bari pronađena su dva tipa vrčeva, pri čemu se u jednome tipu razlikuju dvije varijante (sl. 4; T. 1: 1–2; 4: 2; 5: 2; 6: 1). Prvi tip je veći vrč grublje izrade zaobljenoga trbuha i stožastoga vrata te oštro izvučenoga ruba. Vrč ima ravno dno, blago podignuto u sredini. Okomitim kanelurama ukrašen je najširi dio trbuha posude (Ž27). Drugi tip je vrč zaobljenoga tijela, naglašenoga trbuha i prijelaza u stožasti vrat posude te izvučenoga ruba. Ručka spaja truh i donji dio vrata posude. Truh ovih vrčeva ukrašen je okomitim kanelurama. Varijante se razlikuju po zonama ukrasa na truhu – razlikuju se

band with finger impressions and four functional-decorative lugs on the upper part (Ž75: Pl. 2: 1), has parallels in Batina (Metzner-Nebelsick 2002: Pl. 12: 14–15; 25A: 1; 25B: 9; 30: 10; Dizdar et al. 2021: grave 18, 118–121) and Dalj (Hoffiller 1938: Pl. 11: 4–5, 9; Metzner-Nebelsick 2002: Pavošević vineyard 1910, grave 16, Pl. 69: 3; Kraus vineyard, Pl. 76: 5; Daljska Planina, Mišin vineyard, Pl. 87: 5; Pavošević vineyard 1910, Pl. 92: 1). Pots of this type appear as early as the 11th century BC, for example at the cemetery in Slatina and other cemeteries of the later phase of the Urnfield culture in southwestern Pannonia and the middle Danube region, and are dated to the range from the Ha A to Ha C phase (Ložnjak Dizdar et al. 2018: 200, Fig. 7: G6, G9).

The pot with a rounded body and conical neck, decorated with vertical fluting on the belly (Ž75: Pl. 2: 2) has parallels in Dalj (Hoffiller 1938: Pl. 6: 3; 7: 3–4; Metzner-Nebelsick 2002: without known provenance, Pl. 55: 8; Poštić vineyard 1909, grave 79, Pl. 60: 1; grave 81, Pl. 60: 8; Poštić vineyard 1909, grave 40, Pl. 80: 4; Poštić vineyard 1909, grave 96, Pl. 82: 1; Josipović vineyard, Pl. 96: 3) and in grave Ž16 in Vukovar Lijeva Bara (Vinski-Gasparini 1973: Pl. 123: 4). C. Metzner-Nebelsick attributes the pot with a densely fluted belly to ceramic horizon II, noting that the distinct form features a small strap handle (2002: 169, Fig. 73: 5). Undecorated pots with a rounded body and conical neck (Ž75, Pl. 5: 3) were found in Batina (Metzner-Nebelsick 2002: Pl. 44: 11) and Dalj (Metzner-Nebelsick 2002: Poštić vineyard 1909, grave 11, Pl. 56: 3), and are also dated to ceramic horizon II (Metzner-Nebelsick 2002: Fig. 73: 2–3).

Jugs

Two types of jugs were found in the graves at Lijeva Bara, with the first type having two variants (Fig. 4; Pl. 1: 1–2; 4: 2; 5: 2; 6: 1). The first type is a large jug of coarser manufacture with a rounded belly, conical neck, and sharply everted rim. The jug has a flat base, slightly raised in the centre. The widest part of the belly is decorated with vertical fluting (Ž27). The second type is a jug with a rounded body, a pronounced belly, a transition into a conical neck, and an everted rim. The handle connects the belly and the lower part of the neck. The belly of these jugs is decorated with vertical fluting. The variants differ in the decoration zones on the belly – jugs whose bellies are decorated at the widest part (variant a) (Ž92) are distinguished from those with fully decorated bellies (variant b) (Ž27, Ž79). Both variants have omphalos bases.

vrčevi čiji su trbusi ukrašeni na najširem dijelu (varijanta a) (Ž92) i čitavi ukrašeni trbusi (varijanta b) (Ž27, Ž79). Obje varijante imaju omfalos dno.

Prvi tip vrča (T. 1: 1) ima paralele u Batini (Metzner-Nebelsick 2002: T. 1: 6–7; 6: 1; 25B: 6, 8; 41: 2; 42: 8; 43: 2; Dizdar et al. 2021: grob 18, 118–121; grob 25, 139–143), Dalju (Hoffiller 1938: T. 6: 1, 4; 10: 1; 17: 1; 20: 1–2, 7, 9; Metzner Nebelsick 2002: T. 53: 1; vinograd Poštić, grob 70, T. 59: 11; grob 10, T. 63: 1; vinograd Panišić, grob 20, T. 67: 8; vinograd Kraus T. 75: 2–4; vinograd Pavošević 1910, grob 12, T. 91: 3; grob 41, T. 92: 2; ostali položaji u Dalju T. 95: 6). Ovaj tip vrča pojavljuje se u tumulu 15 u Pécs – Jakabhegyu (Maráz 1979: 151–152, Abb. 6). C. Metzner-Nebelsick ovaj tip pripisuje IIIa keramičkom horizontu (2002: 169–172, Abb. 74: 5).

Drugi tip vrča varijante a (T. 6: 1) ima usporredbe u Batini (Metzner-Nebelsick 2002: T. 3: 4; 6A: 1, 3–5; 16: 6; 21: 6; 23: 1–2; 26: 5; 34: 2; 43: 5; 45: 1; Dizdar et al. 2021: grob 18, 118–121; grob 25, 139–143) i Dalju (Hoffiller 1938: T. 10: 3; 15; Metzner-Nebelsick 2002: T. 48: 8; 52: 4; bez poznatoga položaja, T. 55: 9). Ovaj tip vrča C. Metzner-Nebelsick pripisuje II keramičkom horizontu (2002: 169, Abb. 73: 19).

Drugi tip vrča varijante b (T. 1: 2; 4: 2; 5: 2) ima paralele u Batini (Metzner-Nebelsick 2002: T. 3: 10; 6: 7; 33: 7; 43: 6), Dalju (Hoffiller 1938: T. 15: 1–2, 6–7, 9–11; 21: 9; Metzner-Nebelsick 2002: vinograd Poštić 1909, grob 11, T. 56: 5; vinograd Poštić 1909, grob 83, T. 60: 9; grob 94, T. 61: 5; grob 85, T. 61: 7; grob 93, T. 62: 1; grob 48, T. 63: 9; grob 1, T. 78: 5; grob 25, T. 79: 4; vinograd Kraus, T. 76: 1) i u Vukovaru Lijevoj Bari, grob Ž67 (Vinski-Gasparini 1973: T. 121: 9; grob Ž16, T. 123: 3; 1983: T. XCI: 16). Ovaj tip vrča C. Metzner-Nebelsick također pripisuje II keramičkom horizontu (2002: 169, Abb. 73: 18).

Zdjele

U grobovima u Lijevoj Bari, koji su predmet objave, pojavljuju se dva tipa zdjela (sl. 4; T. 1: 3–4; 2: 3; 3: 2; 4: 1, 3–4; 5: 4–6). Prvi tip predstavljaju zdjele zaobljenoga tijela, uvučenoga koso kaneliranoga ruba te uglavnom omfalos dna (Ž27, Ž79, Ž80). U jednome slučaju radi se o ravnome dnu (Ž79). Dvije zdjele imaju vodoravne ušice (Ž79, Ž80), a dvije

The first type of jug (Pl. 1: 1) has parallels in Batina (Metzner-Nebelsick 2002: Pl. 1: 6–7; 6: 1; 25B: 6, 8; 41: 2; 42: 8; 43: 2; Dizdar et al. 2021: grave 18, 118–121; grave 25, 139–143) and Dalj (Hoffiller 1938: Pl. 6: 1, 4; 10: 1; 17: 1; 20: 1–2, 7, 9; Metzner Nebelsick 2002: Pl. 53: 1; Poštić vineyard, grave 70, Pl. 59: 11; grave 10, Pl. 63: 1; Panišić vineyard, grave 20, Pl. 67: 8; Kraus vineyard Pl. 75: 2–4; Pavošević vineyard 1910, grave 12, Pl. 91: 3; grave 41, Pl. 92: 2; other locations in Dalj Pl. 95: 6). This type of jug appears in tumulus 15 at Pécs – Jakabhegy (Maráz 1979: 151–152, Fig. 6). C. Metzner-Nebelsick assigns this type to ceramic horizon IIIa (2002: 169–172, Fig. 74: 5).

The second type of jug, variant a (Pl. 6: 1), has parallels in Batina (Metzner-Nebelsick 2002: Pl. 3: 4; 6A: 1, 3–5; 16: 6; 21: 6; 23: 1–2; 26: 5; 34: 2; 43: 5; 45: 1; Dizdar et al. 2021: grave 18, 118–121; grave 25, 139–143) and Dalj (Hoffiller 1938: Pl. 10: 3; 15; Metzner-Nebelsick 2002: Pl. 48: 8; 52: 4; without known provenance, Pl. 55: 9). C. Metzner-Nebelsick assigns this type of jug to ceramic horizon II (2002: 169, Fig. 73: 19).

The second type of jug, variant b (Pl. 1: 2; 4: 2; 5: 2), has parallels in Batina (Metzner-Nebelsick 2002: Pl. 3: 10; 6: 7; 33: 7; 43: 6), Dalj (Hoffiller 1938: Pl. 15: 1–2, 6–7, 9–11; 21: 9; Metzner-Nebelsick 2002: Poštić vineyard 1909, grave 11, Pl. 56: 5; Poštić vineyard 1909, grave 83, Pl. 60: 9; grave 94, Pl. 61: 5; grave 85, Pl. 61: 7; grave 93, Pl. 62: 1; grave 48, Pl. 63: 9; grave 1, Pl. 78: 5; grave 25, Pl. 79: 4; Kraus vineyard, Pl. 76: 1), and in Vukovar Lijeva Bara, grave Ž67 (Vinski-Gasparini 1973: Pl. 121: 9; grave Ž16, Pl. 123: 3; 1983: Pl. XCI: 16). C. Metzner-Nebelsick also assigns this type of jug to ceramic horizon II (2002: 169, Fig. 73: 18).

Bowls

Two types of bowls appear in the graves at Lijevo Bari which are the subject of this publication (Fig. 4; Pl. 1: 3–4; 3: 2; 4: 1, 3–4; 5: 4–6). The first type is represented by bowls with a rounded body, an inverted obliquely fluted rim, and generally an omphalos base (Ž27, Ž79, Ž80). In one instance, the base is flat (Ž79). Two bowls feature horizontal lugs (Ž79, Ž80), and two have vertical suspension lugs (Ž27, Ž79). Two bowls have a decorated base on the interior of the vessel (Ž79). The second type comprises bowls with a rounded body and a short, sharply everted rim, with a flat or omphalos base (Ž27, Ž79, Ž80). One bowl has a horizontal lug (Ž79), and another has a vertical lug (Ž27).

zdjele okomite ušice za vješanje (Ž27, Ž79). Dvije zdjele imaju ukrašeno dno na unutarnjoj stijenci posude (Ž79). Drugi tip su zdjele zaobljenoga tijela i kratkoga oštro izvučenoga ruba ravnoga ili omfalos dna (Ž27, Ž79, Ž80). Jedna zdjela ima vodoravnu (Ž79), a druga okomitu ušicu (Ž27).

Prvi tip zdjela (T. 1: 4; T. 4: 1, 3; 5: 4, 6) vrlo je čest u grobovima grupe Dalj te ima usporredbe u Batini (Metzner-Nebelsick 2002: T. 1: 3–4; 13: 9; 24: 1–2; 31: 1; 33: 12–13; 42: 1–2; 44: 6; 45: 7; Dizdar et al. 2021: grob 18, 118–122; grob 20, 130–134; grob 25, 139–143), zatim u Dalju (Hoffiller 1938: T. 30: 1–11; 31: 5–10; 32: 1–3; Metzner-Nebelsick 2002: T. 50: 2; 54: 8; vinograd Poštić 1909, grob 11, T. 56: 7; grob 47, T. 58: 4; grob 51, T. 58: 6; grob 56, T. 58: 7; grob 59, T. 59: 10 (ukrašena zdjela II horizont); grob 93, T. 62: 2; grob 72, T. 62: 7; grob 20, T. 63: 19; grob 6, T. 63: 21; vinograd Panišić 1910, grob 3A, T. 64: 3; vinograd Panišić 1911, grob 20, T. 67: 6; vinograd Pavošević 1910, grob 21, T. 70: 6; vinograd Kraus 1911, T. 75: 5–6; vinograd Poštić 1909, grob 20, T. 78: 7; gob 92, T. 81: 6; Dalj – Busija, T. 82: 3–4; vinograd Gjuričić 1911, grob 1, T. 84: 1; grob 3, T. 84: 2; bez bliže oznake položaja, T. 86: 6; vinograd Utvić 1910, T. 89: 6; vinograd Asztalos, T. 96: 10–11), u Vukovaru Lijevoj Bari, grob Ž17 (Vinski-Gasparini 1973: T. 121: 2; grob Ž16, T. 123: 2; grob Ž42, T. 124: 2) i u grobu 24 iz Belišća (Ložnjak Dizdar 2014: 83–84, Pl. 1: 4). Ovakve su zdjele u upotrebi u pogrebnome ritualu u Doroslovu (Trajković 2008: grob 7, 6–8; grob 48, 2; grob 49 2; grob 53, 2–3; grob 56, 2; grob 63, 2; grob 66, 2; grob 71, 2; grob 75, 2; grob 82, 2; grob 84, 2; grob 98, 2; grob 101, 2; grob 107, 2; grob 114, 4). Ovakve se zdjele pojavljuju i u tumulima 4 i 10 na groblju Pécs – Jakabhegy (Maráz 1979: 151, T. VI: 1, 3, 5). Prema C. Metzner-Nebelsick ovaj tip zdjela pojavljuje se u keramičkim horizontima I i II (2002: 167–169, Abb. 72: 6; 73: 13).

Ukrašena je unutrašnjost zdjela iz Dalja koje se datiraju u II horizont (Hoffiller 1938: T. 32: 1–3; Metzner-Nebelsick 2002: vinograd Poštić 1909, grob 59, T. 59: 10; Dalj Busija, T. 82: 3–4), no motivi nisu kao na zdjelama iz Vukovara (T. 4: 1, 3) gdje je ukrašeno samo dno koncentričnim kanelurama ili ukrasom vodoravnih kanelura podijeljenih na četvrtine.

The first type of bowl (Pl. 1: 4; Pl. 4: 1, 3; 5: 4, 6) is very common in graves of the Dalj group and has parallels in Batina (Metzner-Nebelsick 2002: Pl. 1: 3–4; 13: 9; 24: 1–2; 31: 1; 33: 12–13; 42: 1–2; 44: 6; 45: 7; Dizdar et al. 2021: grave 18, 118–122; grave 20, 130–134; grave 25, 139–143), then in Dalj (Hoffiller 1938: Pl. 30: 1–11; 31: 5–10; 32: 1–3; Metzner-Nebelsick 2002: Pl. 50: 2; 54: 8; Poštić vineyard 1909, grave 11, Pl. 56: 7; grave 47, Pl. 58: 4; grave 51, Pl. 58: 6; grave 56, Pl. 58: 7; grave 59, Pl. 59: 10 (decorated bowl, horizon II); grave 93, Pl. 62: 2; grave 72, Pl. 62: 7; grave 20, Pl. 63: 19; grave 6, Pl. 63: 21; Panišić vineyard 1910, grave 3A, Pl. 64: 3; Panišić vineyard 1911, grave 20, Pl. 67: 6; Pavošević vineyard 1910, grave 21, Pl. 70: 6; Kraus vineyard 1911, Pl. 75: 5–6; Poštić vineyard 1909, grave 20, Pl. 78: 7; grave 92, Pl. 81: 6; Dalj – Busija, Pl. 82: 3–4; Gjuričić vineyard 1911, grave 1, Pl. 84: 1; grave 3, Pl. 84: 2; without precise location, Pl. 86: 6; Utvić vineyard 1910, Pl. 89: 6; Asztalos vineyard, Pl. 96: 10–11), in Vukovar Lijeva Bara, grave Ž17 (Vinski-Gasparini 1973: Pl. 121: 2; grave Ž16, Pl. 123: 2; grave Ž42, Pl. 124: 2) and in grave 24 from Belišće (Ložnjak Dizdar 2014: 83–84, Pl. 1: 4). Such bowls were used in funerary practices in Doroslovo (Trajković 2008: grave 7, 6–8; grave 48, 2; grave 49 2; grave 53, 2–3; grave 56, 2; grave 63, 2; grave 66, 2; grave 71, 2; grave 75, 2; grave 82, 2; grave 84, 2; grave 98, 2; grave 101, 2; grave 107, 2; grave 114, 4). Such bowls also appear in tumuli 4 and 10 at the Pécs – Jakabhegy cemetery (Maráz 1979: 151, Pl. VI: 1, 3, 5). According to C. Metzner-Nebelsick, this type of bowl appears in ceramic horizons I and II (2002: 167–169, Fig. 72: 6; 73: 13).

The interiors of the bowls from Dalj, dated to horizon II, are decorated (Hoffiller 1938: Pl. 32: 1–3; Metzner-Nebelsick 2002: Poštić vineyard 1909, grave 59, Pl. 59: 10; Dalj Busija, Pl. 82: 3–4); however, the motifs differ from those on bowls from Vukovar (Pl. 4: 1, 3), where only the base is decorated with concentric fluting or with a decoration of horizontal fluting divided into quarters.

The second type of bowl (Pl. 1: 3; 4: 4; 5: 5) has parallels in Batina (Metzner-Nebelsick 2002: Pl. 1: 1–2; 26: 6; 31: 7; 33: 14), in Dalj (Hoffiller 1938: Pl. 25: 1–2, 4–5, 7, 11; 26: 10; Metzner-Nebelsick 2002: Pl. 50: 5; Poštić vineyard 1909, grave 28, Pl. 57: 6; Pavošević vineyard 1910, Pl. 70: 5; grave 38, Pl. 72: 2; grave 5, Pl. 91: 1), and in Vukovar Lijeva Bara, grave Ž37 (Vinski-Gasparini 1973: Pl. 121: 5), grave Ž16 (Vinski-Gasparini 1973: Pl. 123: 6). This type of bowl appears in Šarengrad

Drugi tip zdjela (T. 1: 3; 4: 4; 5: 5) ima usporedbe u Batini (Metzner-Nebelsick 2002: T. 1: 1–2; 26: 6; 31: 7; 33: 14), u Dalju (Hoffiller 1938: T. 25: 1–2, 4–5, 7, 11; 26: 10; Metzner-Nebelsick 2002: T. 50: 5; vinograd Poštić 1909, grob 28, T. 57: 6; vinograd Pavošević 1910, T. 70: 5; grob 38, T. 72: 2; grob 5, T. 91: 1) i u Vukovaru Lijevoj Bari, grob Ž37 (Vinski-Gasparini 1973: T. 121: 5), grob Ž16 (Vinski-Gasparini 1973: T.123: 6). Takav tip zdjela pojavljuje se u Šaregradu (Vinski-Gasparini 1973: T. 114: 1, 5, 8, 11–12) i u Belišću, grob 24 (Ložnjak Dizdar 2014: 83–84, Pl. 1: 3). Ovaj tip zdjela pripisan je keramičkim horizontima II i IIIa prema C. Metzner-Nebelsick (2002: 169–172, Abb. 73: 11–12; 74: 7).

Ulomak zdjele zaobljenoga tijela i izvučenoga ruba (T. 3: 2) ima paralele u naseljima bosutske grupe, npr. Gradina na Bosutu (Medović, Medović 2011).

Šalice

U grobovima u Lijevoj Bari otkrivena su dva tipa šalice (sl. 4; T. 1: 5; 6: 2–4). Prvi tip predstavlja šalice zaobljenoga tijela, ravnoga ruba, omfalos dna s ručkom koja nadvisuje rub posude (Ž27, Ž80, Ž92). Jedan primjerak je ukrašen koncentričnim krugovima na unutrašnjoj strani posude (Ž92). Drugi tip je zaobljenoga tijela, naglašenoga ramena, stožastoga vrata te blago izvučenoga ruba i ravnoga dna (Ž80).

Prvi tip šalice (T. 1: 5; 6: 2–3) pojavljuje se u Batini (Metzner-Nebelsick 2002: T. 4: 8–10; 6: 8–9; 16: 7, 10; 22: 9–11; 23: 4, 6, 8; 33: 5–6; 41: 11–12; 43: 4; 45: 14–15; Dizdar et al. 2021: grob 18, 118–122; grob 25, 139–143; grob 37, 148–151; grob 44, 161–162; 103, 179). Nalazi u grobovima iz Batine pokazuju kako se ove šalice mogu pratiti od najstarijih do najmlađih grobova. Ovaj tip pojavljuje se i u Dalju (Hoffiller 1938: T. 23: 1–2, 4–6; 7: 10–12; 24: 7–12; Metzner-Nebelsick 2002: T. 48: 1–5; 53: 6; 55: 7, 11; vinograd Poštić, grob 79, T. 60: 2; vinograd Panišić 1909, grob 3, T. 64: 7–8; vinograd Panišić 1911, grob 20, T. 67: 7; vinograd Jelenik 1910, grob 8, T. 77: 4; vinograd Poštić, grob 42, T. 80: 5; grob 61, T. 81: 1; vinograd Klepac, T. 88: 4; vinograd Pavošević 1910, grob 56, T. 93: 2; Daljska planina, T. 93:6), zatim u Osijeku (Metzner-Nebelsick 2002: T. 102: 10). Pronađene su u Vukovaru Lijevoj Bari u grobu Ž16 (Vinski-Gasparini

(Vinski-Gasparini 1973: Pl. 114: 1, 5, 8, 11–12) and in Belišće, grave 24 (Ložnjak Dizdar 2014: 83–84, Pl. 1: 3). This type of bowl is attributed to ceramic horizons II and IIIa according to C. Metzner-Nebelsick (2002: 169–172, Fig. 73: 11–12; 74: 7).

The fragment of a bowl with a rounded body and everted rim (Pl. 3: 2) has parallels in settlements of the Bosut group, e.g., Gradina on the Bosut (Medović, Medović 2011).

Cups

Two types of cups were discovered in the graves at Lijeva Bara (Fig. 4; Pl. 1:5; 5: 6: 2–4). The first type is represented by a cup with a rounded body, a straight rim, and an omphalos base, with a handle that projects above the rim of the vessel (Ž 27, Ž80, Ž92). One specimen is decorated with concentric circles on the interior of the vessel (Ž92). The second type has a rounded body, a pronounced shoulder, a conical neck, a slightly everted rim, and a flat base (Ž80).

The first type of cup (Pl. 1: 5; 6: 2–3) appears in Batina (Metzner-Nebelsick 2002: Pl. 4: 8–10; 6: 8–9; 16: 7, 10; 22: 9–11; 23: 4, 6, 8; 33: 5–6; 41: 11–12; 43: 4; 45: 14–15; Dizdar et al. 2021: grave 18, 118–122; grave 25, 139–143; grave 37, 148–151; grave 44, 161–162; 103, 179). Finds in graves from Batina show that these cups can be traced from the oldest to the youngest graves. This type also appears in Dalj (Hoffiller 1938: Pl. 23: 1–2, 4–6; 7: 10–12; 24: 7–12; Metzner-Nebelsick 2002: Pl. 48: 1–5; 53: 6; 55: 7, 11; Poštić vineyard, grave 79, Pl. 60: 2; Panišić vineyard 1909, grave 3, Pl. 64: 7–8; Panišić vineyard 1911, grave 20, Pl. 67: 7; Jelenik vineyard 1910, grave 8, Pl. 77: 4; Poštić vineyard, grave 42, Pl. 80: 5; grave 61, Pl. 81: 1; Klepac vineyard, Pl. 88: 4; Pavošević vineyard 1910, grave 56, Pl. 93: 2; Daljska Planina, Pl. 93:6), and in Osijek (Metzner-Nebelsick 2002: Pl. 102: 10). They were found in Vukovar Lijeva Bara in grave Ž16 (Vinski-Gasparini 1973: Pl. 123: 5; grave 42, Pl. 124: 3) and Šaregrad (Vinski-Gasparini 1973: Pl. 114: 7). This type of cup also appears in graves in Doroslovo (Trajković 2008: grave 5, 5; grave 44, 8; grave 50, 4; grave 110, 5; grave 117, 6; grave 123, 5–6; grave 136, 3; grave 149, 5) and in tumuli 4 and 6 in Pécs – Jakabhegy (Maráz 1979: 151–152, Pl. VII: 1, 7). Cups of this type appear from ceramic horizon I to IIIb (Metzner-Nebelsick 2002: 167–175, Fig. 72: 11; 73: 15; 74: 11; 75: 14–15).

The second type of cup (Pl. 6: 4) is known from Batina (Metzner-Nebelsick 2002: Pl. 4: 4; 41: 7), Dalj (Hoffiller 1938: Pl. 18: 4; 19: 2, 9; Metzner-

1973: T. 123: 5; grob 42, T. 124: 3) i Šarengardu (Vinski-Gasparini 1973: T. 114: 7). Ovaj se tip šalice pojavljuje i u grobovima u Doroslovu (Trajković 2008: grob 5, 5; grob 44, 8; grob 50, 4; grob 110, 5; grob 117, 6; grob 123, 5–6; grob 136, 3; grob 149, 5) te u tumulima 4 i 6 u Pécs – Jakabhegyu (Maráz 1979: 151–152, T. VII: 1, 7). Šalice ovoga tipa pojavljuju se od I do IIIb keramičkoga horizonta (Metzner-Nebelsick 2002: 167–175, Abb. 72: 11; 73: 15; 74: 11; 75: 14–15).

Drugi tip šalice (T. 6: 4) poznat je iz Batine (Metzner-Nebelsick 2002: T. 4: 4; 41: 7), Dalja (Hoffiller 1938: T. 18: 4; 19: 2, 9; Metzner-Nebelsick 2002: T. 55: 3; vinograd Poštić 1909, grob 81, T. 60: 4; grob 86, T. 62: 12; grob 73, T. 81: 4; vinograd Pavošević 1910, grob 38, T. 72: 3; vinograd Gjuričić, grob 16, T. 84: 7). Ovakva šalica pronađena je i u tumulu 16 u Pécs – Jakabhegyu (Maráz 1987: 42, Fig. 5: 1). Šalice ovoga tipa pojavljuju se u keramičkim horizontima I i II prema C. Metzner-Nebelsick (2002: 167–169, Abb. 72: 9; 73: 17).

Tipološki i stilski keramički nalazi iz navedenih grobova s groblja Vukovar Lijeva Bara najsljedniji su nalazima iz Dalja (Hoffiller 1938; Metzner-Nebelsick 2002) i starijih grobova iz Batine (Dizdar et al. 2021).

Metalni nalazi

Fibula

U grobu Ž75 pronađena je željezna dvopetljava fibula s trokutastom širokom nožicom i tri dugmeta na luku koji su ukrašeni vodoravnim urezima koji su ispunjeni bakrenom slitinom (sl. 5; T. 3: 3). Fibula ima i ojačanje na petlji iznad trokutaste nožice. Ona pripada tipu B I 1, varijanta y prema D. Gergovoj (1987: 38, T. 8: 107–110) koja ističe njihovu rasprostranjenost u istočnoj Bugarskoj sjeverno od Stare planine. Datirala ih je u razdoblje od 10. do 8. st. pr. Kr., a primjerak iz groba Ž75 iz Vukovara ispravno je pripisala tome tipu, uzevši u obzir i dataciju groba prema K. Vinski-Gasparini (Gergova 1987: 38).

M. Kashuba analizirala je rasprostranjenost fibula ovoga tipa 2006. godine te je dodala još po jedan primjerak iz Rumunjske s područja Dobruđe, Moldavije i Rumunjske (Kashuba 2006: 225, Abb. 2; 8: 1–3, 6–8; 13) i datira ih je u 10. i 9. st. pr. Kr. Kartu rasprostranjenosti nadopunila je u kasnijoj objavi (Kashuba 2008: Abb. 19) s nalazištem u

Nebelsick 2002: Pl. 55: 3; Poštić vineyard 1909, grave 81, Pl. 60: 4; grave 86, Pl. 62: 12; grave 73, Pl. 81: 4; Pavošević vineyard 1910, grave 38, Pl. 72: 3; Gjuričić vineyard, grave 16, Pl. 84: 7). Such a cup was also found in tumulus 16 at Pécs – Jakabhegy (Maráz 1987: 42, Fig. 5: 1). Cups of this type appear in ceramic horizons I and II according to C. Metzner-Nebelsick (2002: 167–169, Fig. 72: 9; 73: 17).

Typologically and stylistically, the ceramic finds from the mentioned graves at the Vukovar Lijeva Bara cemetery are most similar to the finds from Dalj (Hoffiller 1938; Metzner-Nebelsick 2002) and the older graves from Batina (Dizdar et al. 2021).

Metal finds

Fibula

Grave Ž75 included an iron double-looped fibula with a broad triangular foot and three knobs on the bow; the knobs are decorated with horizontal incisions filled with copper alloy (Fig. 5; Pl. 3: 3). The fibula also features a reinforcement on the loop above the triangular foot. It belongs to type B I 1, variant y, according to D. Gergova (1987: 38, Pl. 8: 107–110), who notes their distribution in eastern Bulgaria north of the Stara Planina. She dates them to the period from the 10th to the 8th century BC, correctly assigning the specimen from Grave Ž75 in Vukovar to this type, taking into account the dating of the grave according to K. Vinski-Gasparini (Gergova 1987: 38).

M. Kashuba analysed the distribution of this type of fibula in 2006 and added one specimen each from Romania, from the territory of Dobruja, Moldavia, and Romania (Kashuba 2006: 225, Fig. 2; 8: 1–3, 6–8; 13), and dated them to the 10th and 9th centuries BC. She supplemented the distribution map in a later publication (Kashuba 2008: Fig. 19) with a site in Transylvania. M. Kashuba referred to this type of fibula several more times in later works (Levitski, Kashuba 2009: Fig. 5; Kashuba 2013: Fig. 7), maintaining the dating in the 10th and 9th centuries BC, corresponding to the Ha B phase. B. Teržan discussed this type of fibula, dividing Type B I 1, variant y – defined by D. Gergova – into three sub-variants based on the shape of the foot; the type from Vukovar would belong to sub-variant 2, which was not visible prior to the latest conservation works (Teržan 2009: Fig. 13: 3–4; 14: 2; 15). She also added finds from Sborjanovo, Kamen Rid, and Jagodina (Teržan 2009: 203, Fig. 13: 1–4; 14: 2). B. Teržan con-



Sl. 5 – Fibula iz groba 75 (snimio: I. Krajcar, Arheološki muzej u Zagrebu)
Fig. 5 – Fibula from grave 75 (photo by: Igor Krajcar, Archaeological museum in Zagreb)

Transilvaniji. M. Kashuba se još nekoliko puta osvrtna na ovaj tip fibule u kasnijim radovima (Levitski, Kashuba 2009: Fig. 5; Kashuba 2013: Fig. 7) ostajući pri dataciji u 10. i 9. st. pr. Kr., odnosno u Ha B stupanj. B. Teržan se osvrtna na ovaj tip fibula podijelivši prema obliku nožice tip B I 1, varijanta y definiran od strane D. Gergove na tri podvarijante, pri čemu bi tip iz Vukovara pripadao podvarijanti 2, što nije bilo vidljivo prije posljednjih konzervatorskih radova (Teržan 2009: Abb. 13: 3–4; 14: 2; 15). Pridodala je još nalaze iz Sborjanova, Kamen Rida i Jagodine (Teržan 2009: 203, Abb. 13: 1–4; 14: 2). B. Teržan zaključuje kako se za kratko vrijeme moda fibula s čvorovima/kuglicama na luku proširila sa zapadnih obala Crnog mora preko istočnoga Balkana sve do jugoistočnoalpskoga prostora, što je vidljivo u različitim varijantama npr. tip 2c, 5a i 5b prema podjeli S. Gabrovca (Teržan 2009: 206, Abb. 15). U novije vrijeme istraživano je groblje Vrabcha u zapadnoj Bugarskoj gdje je otkriven još jedan primjerak ove fibule. Prema dosadašnjim spoznajama, željezne dvopetljaste fibule s tri kuglice na luku koje su ukrašene i vodoravnim urezima i brončanim intarzijama pronađene su na lokalitetima Hlyabovo (dva primjerka) i u okrugu Sliven, Kamenom Ridu, u paljevinske grobu i Progledu i na groblju Vrabcha (Михайлов 2020: Fig. 5: 1) u Bugarskoj (Gergova 1987: 38, T. 8: 107–110; Kashuba 2006: Abb. 2; Teržan 2009: Abb. 15).

Željezne dvopetljaste lučne fibule s tri neukrašene kuglice na luku pronađene su na na-

cludes that in a short time, the fashion of fibulae with knots/knobs on the bow spread from the western shores of the Black Sea across the eastern Balkans all the way to the southeastern Alpine region, which is evident in different variants, e.g., types 2c, 5a, and 5b according to the classification of S. Gabrovca (Teržan 2009: 206, Fig. 15). In more recent times, another specimen of this fibula was discovered in the Vrabcha cemetery in western Bulgaria. According to current knowledge, iron double-looped fibulae with three knobs on the bow, decorated with both horizontal incisions and bronze inlays, have been found at the sites of Hlyabovo (two specimens) and in the Sliven district, at Kamen Rid, in a cremation grave in Progled, and at the Vrabcha cemetery (Михайлов 2020: Fig. 5: 1) in Bulgaria (Gergova 1987: 38, Pl. 8: 107–110; Kashuba 2006: Fig. 2; Teržan 2009: Fig. 15).

Iron double-looped bow fibulae with three undecorated knobs on the bow were found at the settlements of Pocreacea (Iconomu 1996: 28, Fig. 14: 3) and Revărsarea (pit 1) in Romania (Simion 2003: 110, 113, Fig. 9: 2; Ailincăi 2013: 91, Pl. 6: 12), in Sborjanovo in grave 3/tumulus III in Bulgaria (Stojanov 1997: 192, Pl. XVIII: 128), in tumulus 1 in Jagodina (Teržan 2009: Fig. 15), and as an old find from the settlement of Debelo Brdo near Sarajevo (Fiala 1896: 63, Abb. 176; Gergova 1987: 38, note 11). The fibulae were analysed on several occasions by M. Kashuba (2006: Fig. 2; 2008: Fig. 19; Levitski, Kashuba 2009: Fig. 5; Kashuba 2013: Fig. 7) and by B. Teržan within the broader context of the appearance of fibulae with knots on

seljima Pocreacea (Iconomu 1996: 28, Fig. 14: 3) i Revărsarea (jama 1) u Rumunjskoj (Simion 2003: 110, 113, Fig. 9: 2; Ailincăi 2013: 91, Pl. 6: 12), zatim u Sborjanovu u grobu 3/tumul III u Bugarskoj (Stojanov 1997: 192, T. XVIII: 128), u tumulu 1 u Jagodini (Teržan 2009: Abb. 15), a navodi se i stari nalaz iz naselja Debelo brdo kod Sarajeva (Fiala 1896: 63, Abb. 176; Gergova 1987: 38, bilj. 11). Fibule je u nekoliko prilika analizirala M. Kashuba (2006: Abb. 2; 2008: Abb. 19; Levitski, Kashuba 2009: Fig. 5; Kashuba 2013: Fig. 7) te B. Teržan u širem okviru pojave fibula s čvorovima na luku od zapadnih obala Crnoga mora do jugoistočnoalpskoga kruga (Teržan 2009: Abb. 15). Prostor jugoistočne Panonije, koji su C. Metzner-Nebelsick i B. Teržan istaknule kao prostor preklapanja komunikacijskih krugova, ovim se nalazom povezuje s istočnobalkanskim prostorom, odnosno s današnjom Bugarskom (sl. 5) odakle je vjerojatno pristigla fibula pronađena u grobu Ž75 u Vukovaru. Ch. Pare u osvrtu na početak željeznoga doba spominje i fibulu iz Vukovara koju je C. Metzner-Nebelsick točno pripisala prema kontekstu II keramičkom horizontu, odnosno 9. st. pr. Kr. (Metzner-Nebelsick 2002: 413, Abb. 184; Pare 2015: 286, Fig. 13; 2025: 116–117, Fig. 20). U raspravu Ch. Parea (2015) fibula iz Vukovara „zalutala je“ u tip Brad. Nakon provedene konzervacije vidljivo je kako takva atribucija fibule iz Vukovara nije točna, tim prije što se radi o dvopetljustoj lučnoj fibuli.

U studijama S. Gabrovca (1970) i R. Vasića (1999) nije zabilježen ovakav tip željezne dvopetljuste fibule. Usporedbom bugarskih tipova (npr. primjerak iz Progleda (Gergova 1987: 38, T. 8: 107; Teržan 2009: Abb. 13: 3) i fibule iz Vukovara vidljive su i razlike, osobito u obliku nožice i položaju luka te se može reći kako je fibula iz Vukovara nastala pod utjecajem fibula s područja Bugarske, ali u maniri najranijih lokalnih željeznih fibula koje su dvopetljuste (Gabrovca 1970: 36), prije svega u oblikovanju nožice i kompozicije fibule (Vasić 1999: 49–51, T. 25: 290–291; 26: 309; 63B). Ono što je razlika u odnosu na druge nalaze fibula te varijante je brončano ojačanje na petlji iznad trokutaste nožice. Slično ojačanje pronađeno je na dvopetljustoj lučnoj fibuli s tordiranim lukom s Gomolave (Vasić 1999: T. 27: 321).

Radiokarbonskom datacijom spaljenih kostiju iz groba Ž75 u Vukovaru dobiven je da-

the bow from the western shores of the Black Sea to the southeastern Alpine sphere (Teržan 2009: Fig. 15). The area of southeastern Pannonia, highlighted by C. Metzner-Nebelsick and B. Teržan as a zone of overlapping communication networks, is connected by this find to the eastern Balkan region, i.e., present-day Bulgaria (Fig. 5), from where the fibula found in grave Ž75 in Vukovar likely arrived. Ch. Pare, in a review of the beginning of the Iron Age, mentions the fibula from Vukovar, which C. Metzner-Nebelsick accurately assigned to ceramic horizon II, i.e., the 9th century BC, based on context (Metzner-Nebelsick 2002: 413, Fig. 184; Pare 2015: 286, Fig. 13; 2025: 116–117, Fig. 20). In Ch. Pare's discussion (2015), the fibula from Vukovar "strayed" into the Brad type. After conservation, it became clear that this attribution of the Vukovar fibula was incorrect, especially since it is a double-looped bow fibula.

This type of iron double-looped fibula was not recorded in the studies of S. Gabrovca (1970) and R. Vasić (1999). Comparison of Bulgarian types (e.g., the specimen from Progled (Gergova 1987: 38, Pl. 8: 107; Teržan 2009: Fig. 13: 3)) with the fibula from Vukovar reveals differences, particularly in the shape of the foot and the position of the bow, leading to the conclusion that the Vukovar fibula was produced under the influence of fibulae from the territory of Bulgaria, but in the style of the earliest local iron double-looped fibulae (Gabrovca 1970: 36), primarily in the shaping of the foot and the composition of the fibula (Vasić 1999: 49–51, Pl. 25: 290–291; 26: 309; 63B). What distinguishes it from other finds of this variant is the bronze reinforcement on the loop above the triangular foot. A similar reinforcement was found on a double-looped bow fibula with a twisted bow from Gomolava (Vasić 1999: Pl. 27: 321).

Radiocarbon dating of the cremated bones from grave Ž75 in Vukovar yielded a date that is not older than circa 750 BC, but it falls within the flattened calibration curve and indicates the possibility of a later date. Typo-chronological analysis of the ceramic vessels and the iron fibula points to an earlier date, and therefore we favour a dating to the end of the 9th century BC and the beginning of the 8th century BC.

Distribution map of iron double-looped fibulae with a triangular foot and knobs on the bow:

tum koji nije stariji od oko 750. g. pr. Kr., ali ulazi u zaravnjenu kalibracijsku krivulju i pokazuje mogućnosti kasnijega datiranja. Tipološka analiza keramičkih posuda i željezne fibule pokazuju višu dataciju, pa se priklanjamo dataciji u kraj 9. st. pr. Kr i početak 8. st. pr. Kr.

Karta rasprostranjenosti željeznih dvopetljustih fibula s trokutastom nožicom i kuglicama na luku:

Fibule s ukrasom od bakrene slitine na kuglicama ●:

1 Kamen Rid (Kashuba 2006: Abb. 2; Teržan 2009: Abb. 15);

2 Hljabovo, dva primjerka (Gergova 1987: 38, T. 8: 108–109; Kashuba 2006: Abb. 2; Teržan 2009: Abb. 15);

Okrug Sliven (Gergova 1987: 38, T. 8: 110; Kashuba 2006: Abb. 2; Teržan 2009: Abb. 15);

3 Progled (Gergova 1987: 38, T. 8: 107; Kashuba 2006: Abb. 2; Teržan 2009: Abb. 15);

4 Vrabcha (Михайлов 2020: Fig. 5: 1);

5 Vukovar (T. 3: 1).

Fibule bez ukrasa na kuglicama ■:

6 Sborjanovo (Stojanov 1997: 192, T. XVIII: 128);

7 Pocracea – Cetatuia (Iconomu 1996: 28, Fig. 14: 3);

8 Revărsarea – Tichilesti (Simion 2003: 110, 113, Fig. 9: 2; Ailincăi 2013: 91, Pl. 6: 12);

9 Jagodina (Teržan 2009: Abb. 15);

10 Debelo brdo (Fiala 1896: 63, Abb. 176).

Perle

Željezne perle (T. 3: 5–8) pronađene su u grobu na nekropoli Vajuga – Pesak (Popović, Vukmanović 1998: T. 7: 14) te u grobovima 8 i 44 na groblju Mezőcsát (Patek 1993: Abb. 26: 5; 28: 7, 9). U grobovima grupe Dalj najčešće se nalaze brončane i koštane perle (Metzner-Nebelsick 2002: 458), dok su željezne, keramičke i kamene perle vrlo rijetki nalazi (Vasić 2008: 334–345).

Pršljen

Željezni pršljeni (T. 3: 4) pronalaze se u istovremenim grobovima u srednjem i gornjem Potisju (Patek 1990: T. 24: 1). Željezni bikonični pršljen pronađen je u grobu 14 u Halimbi (Patek 1993: Abb. 70: 6) te u grobu 148 u Doroslovu (Trajković 2008: 317, grob 148, 6). Spomenuti grobovi sa željeznim perlama i pršljenima datirani su 9. i 8. st. pr. Kr. (Patek

Fibulae with copper alloy decoration on the knobs ●:

1 Kamen Rid (Kashuba 2006: Fig. 2; Teržan 2009: Fig. 15);

2 Hlyabovo, two specimens (Gergova 1987: 38, Pl. 8: 108–109; Kashuba 2006: Fig. 2; Teržan 2009: Fig. 15);

Sliven District (Gergova 1987: 38, Pl. 8: 110; Kashuba 2006: Fig. 2; Teržan 2009: Fig. 15);

3 Progled (Gergova 1987: 38, Pl. 8: 107; Kashuba 2006: Fig. 2; Teržan 2009: Fig. 15);

4 Vrabcha (Михайлов 2020: Fig. 5: 1);

5 Vukovar (Pl. 3: 1).

Fibulae without decoration on the knobs ■:

6 Sborjanovo (Stojanov 1997: 192, Pl. XVIII: 128);

7 Pocracea – Cetatuia (Iconomu 1996: 28, Fig. 14: 3);

8 Revărsarea – Tichilesti (Simion 2003: 110, 113, Fig. 9: 2; Ailincăi 2013: 91, Pl. 6: 12);

9 Jagodina (Teržan 2009: Fig. 15);

10 Debelo Brdo (Fiala 1896: 63, Fig. 176).

Beads

Iron beads (Pl. 3: 5–8) were found in a grave at the Vajuga–Pesak necropolis (Popović, Vukmanović 1998: Pl. 7: 14) and in graves 8 and 44 at the Mezőcsát cemetery (Patek 1993: Fig. 26: 5; 28: 7, 9). In graves of the Dalj group, bronze and bone beads are most commonly found (Metzner-Nebelsick 2002: 458), while iron, ceramic, and stone beads are very rare finds (Vasić 2008: 334–345).

Whorl

Iron whorls (Pl. 3: 4) are found in contemporaneous graves in the middle and upper Tisza region (Patek 1990: Pl. 24: 1). An iron biconical whorl was found in grave 14 in Halimba (Patek 1993: Fig. 70: 6) and in grave 148 in Doroslovo (Trajković 2008: 317, grave 148, 6). These graves with iron beads and whorls are dated to the 9th and 8th centuries BC (Patek 1993: 23; Metzner-Nebelsick 1998; Popović, Vukmanović 1998: 106).

When comparing the compositions of the grave assemblages, grave Ž80 has close parallels in grave Ž16 from Vukovar (Vinski-Gasparini 1973: Pl. 123: 1–8) and in graves 18, 20, and 25 from Batina (Dizdar et al. 2021: 118–123; 130–134; 139–143). Tumulus 10 at Pécs – Jakabhegy included a pot, a jug, and a bowl (Maráz 1979: 148–149, Pl. VI: 4–6) of similar type to those in Vukovar.



Sl. 6 – Karta rasprostranjenosti željeznih dvopetljastih fibula s tri dugmeta na luku (podloga: CC0, <https://creativecommons.org/public-domain/cc0/>; izradila: D. Ložnjak Dizdar)

Fig. 6 – Distribution map of iron double-looped fibulae with three knobs on the bow (base: CC0, <https://creativecommons.org/public-domain/cc0/>; made by: D. Ložnjak Dizdar)

1993: 23; Metzner-Nebelsick 1998; Popović, Vukmanović 1998: 106).

Usporede li se kompozicije grobnih cjelina, grob Ž80 ima bliske usporedbe u grobu Ž16 iz Vukovara (Vinski-Gasparini 1973: T. 123: 1–8) te u grobovima 18, 20 i 25 iz Batine (Dizdar et al. 2021: 118–123; 130–134; 139–143). U tumulu 10 u Pécs – Jakabhegyu isto su pronađeni lonac, vrč i zdjela (Maráz 1979: 148–149, T. VI: 4–6) sličnoga tipa kao u Vukovaru.

Cremation graves Ž27, Ž75, Ž79, Ž80, and Ž92 can be dated to ceramic horizon II according to the typo-chronological analysis of ceramic finds and the analysis of ceramic set compositions by C. Metzner-Nebelsick (2002: 169, Fig. 73). This dating is supported by the find of an iron double-looped fibula, which can be dated from the second half of the 9th to the middle of the 8th century BC, as confirmed by the radiocarbon date.

Paljevinski grobovi Ž27, Ž75, Ž79, Ž80 i Ž92 mogu se, prema tipološkoj analizi keramičkih nalaza i analizi kompozicije keramičkih setova, datirati u II keramički horizont nalaza prema C. Metzner-Nebelsick (2002: 169, Abb. 73). U prilog takvoj dataciji ide i nalaz željezne dvopetljaste fibule koja se može datirati od druge polovice 9. do polovice 8. st. pr. Kr., što je potvrđeno i radiokarbonskim datumom.

ZAKLJUČAK

U radu su predstavljeni rezultati analize pet paljevinskih grobova – Ž27, Ž75, Ž79, Ž80 i Ž92 s nalazišta Vukovar Lijeva Bara koji se nalaze u Prehistorijskoj zbirci Arheološkoga muzeja u Zagrebu. Osim nalaza, analizirani su spaljeni ostaci pokojnika, a uzorci iz grobova Ž75, Ž79, Ž80 i Ž92 su datirani ¹⁴C metodom. Grobovi se prema rezultatima tipološke analize keramičkih nalaza mogu datirati u II keramički horizont, odnosno u 9. st. pr. Kr, što potvrđuju i radiokarbonski datumi. Grob Ž75 s nalazom željezne dvopetljaste fibule s kuglicama na luku koji su ukrašeni paralelnim linijama s intarzijama od bakrene slitine datira se od polovice 9. do polovice 8. st. pr. Kr. Fibula je vjerojatno domaće proizvodnje inspirirana istočnim utjecajima s područja današnje Bugarske s obzirom na područje njezina rasprostriranja. Tipološki i kompozicijski keramički ansambli imaju najbližije usporedbe u istovremenim grobljima u Dalju, Batini, Belišću i Pécs – Jakabhegyu. Željezna fibula pokazuje istočnu inspiraciju, dok su pršljen te željezne perle povezani s nalazima s prostora Potisja i donjega Podunavlja. Rezultati radiokarbonskoga datiranja četiri groba iz Vukovara Lijeve Bare potvrđuju tipološku periodizaciju II horizonta u 9. st. pr. Kr.

Antropološka analiza ljudskih spaljenih ostataka pružila je podatke o dobu i spolu pojedinih osoba. S obzirom na relativno malu količinu spaljenih ostataka (129,9 g do 17 g), podaci dobiveni analizom su skromni. Kod većine osoba bilo je moguće odrediti radi li se o osobi odrasle ili dječje dobi, no nažalost nije bilo moguće pobliže odrediti dob odraslih, a kod većine niti spol. Jedina odrasla osoba kojoj je bilo moguće odrediti spol je ona u grobu Ž75 za koju se, prema prisutnim ostacima, utvrdilo da je bila ženskoga spola. Izuzetak je i grob Ž80 u kojemu je, prema analizi, bila pokopana mlađa osoba u dobi od 12 do 18 godina.

CONCLUSION

The paper presented the results of the analysis of five cremation graves – Ž27, Ž75, Ž79, Ž80, and Ž92 – from the Vukovar Lijeva Bara site, which are housed in the Prehistoric Collection of the Archaeological Museum in Zagreb. In addition to the finds, the cremated human remains were also analysed, and samples from graves Ž75, Ž79, Ž80, and Ž92 were dated using the radiocarbon (¹⁴C) method. According to the results of the typo-chronological analysis of the ceramic finds, the graves can be dated to ceramic horizon II, corresponding to the 9th century BC, which is also confirmed by the radiocarbon dates. Grave Ž75, containing an iron double-looped fibula with knobs on the bow decorated with parallel lines and copper alloy inlays, is dated from the middle of the 9th to the middle of the 8th century BC. The fibula was likely of local manufacture, inspired by eastern influences from the territory of present-day Bulgaria, considering its distribution area. Typologically and compositionally, the ceramic assemblages find their closest parallels in contemporaneous cemeteries at Dalj, Batina, Belišće, and Pécs – Jakabhegy. The iron fibula demonstrates eastern inspiration, while the whorl and iron beads are connected to finds from the Tisza region and the Lower Danube area. The results of the radiocarbon dating of the four graves from Vukovar Lijeva Bara confirm the typo-chronological periodization of horizon II to the 9th century BC.

The anthropological analysis of the cremated human remains provided information on the age and sex of the individuals. Given the relatively small quantity of cremated remains (ranging from 129.9 g to 17 g), the data obtained from the analysis are limited. For most individuals, it was possible to determine whether the remains belonged to an adult or a child, but unfortunately, it was not possible to more precisely determine the age of the adults or, in most cases, their sex. The only adult whose sex could be determined was the individual from grave Ž75, identified as female based on the available remains. Another exception is grave Ž80, which contained the remains of a juvenile individual aged between 12 and 18 years, according to the analysis.

A comparison of the data reveals that grave Ž80, which belongs to an individual aged 12–18 years, contained vessels of smaller volume,

Usporedbom podataka vidljivo je kako su u grobu Ž80, koji pripada osobi staroj 12–18 godina, manji volumeni posuda kao što je vidljivo i u grobovima djece u Batini (npr. grob 20: Dizdar et al. 2021: 130–134; grob 90: Ložnjak Dizdar et al. in print).

U radu je predstavljena, analizirana i ponovno valorizirana građa iz pet paljevinskih grobova iz Vukovara Lijeve Bare u okviru sadašnjega stanja istraživanja kraja kasnoga brončanog i početka starijega željeznog doba na prostoru južnoga dijela srednjega Podunavlja. Provedena analiza potvrdila je tipološku periodizaciju u II keramički horizont, potkrijepivši je i radiokarbonskim datiranjem spaljenih ljudskih kostiju u drugu polovicu 9. st. pr. Kr. Šira regionalna analiza nalaza pokazala je sličnosti s istovremenim grobovima u Dalju i Batini, ali i nešto udaljenijima Belišću i Pécs – Jakabhegyu. Metalni nalazi pak pokazuju da su mreže razmjena i komunikacija bile usmjerene i prema donjem Podunavlju, istočnome dijelu Balkana i Potisju.

ZAHVALE

Ovaj rad dijelom je financiran sredstvima istraživačkog projekta *Djetinjstvo u proto-povijesti na jugu Karpatske kotline* ARHKIDS (IP 2019-04-2520) Hrvatske zaklade za znanost. Srdačno zahvaljujemo Slađani Latinović na konzervaciji metalnih nalaza iz groba Ž75, Marini Gregl na restauraciji keramičkih posuda i Miljenki Galić za crteže predmeta i Igoru Krajcaru za fotografiju fibule. Kolegi Domagoju Dujmiću zahvaljujemo na podacima o broju istraženih grobova na Batini. Staši Forenbaheru i Katarini Botić zahvaljujemo na pomoći oko kalibracije i grafičkoga prikaza rezultata dobivenih radiokarbonskim datiranjem.

similar to those found in child graves at Batina (e.g., grave 20: Dizdar et al. 2021: 130–134; grave 90: Ložnjak Dizdar et al. forthcoming).

The paper presents, analyses, and re-evaluates the material from five cremation graves at Vukovar Lijeva Bara within the framework of the current state of research on the end of the Late Bronze Age and the beginning of the Early Iron Age in the southern part of the middle Danube region. The conducted analysis confirmed the typo-chronological periodization to ceramic horizon II, supported by radiocarbon dating of the cremated human bones to the second half of the 9th century BC. A broader regional analysis of the finds revealed similarities with contemporaneous graves at Dalj and Batina, as well as more distant ones at Belišće and Pécs – Jakabhegy. The metal finds, however, indicate that networks of exchange and communication also extended toward the Lower Danube, the eastern Balkans, and the Tisza region.

ACKNOWLEDGEMENTS

This paper was funded in part by the research project *Childhood in Protohistory in the Southern Carpathian Basin* ARHKIDS (IP 2019-04-2520) of the Croatian Science Foundation. We gratefully thank Slađana Latinović for the conservation of metal finds from grave Ž75, Marina Gregl for the restoration of the ceramic vessels, and Miljenka Galić for the drawings of the objects and Igor Krajcar for photo of fibula. We thank our colleague Domagoj Dujmić for the data on the number of excavated graves at Batina. We thank Stašo Forenbaher and Katarina Botić for their assistance with the calibration and graphical presentation of the radiocarbon dating results.

Translation Prijevod **MARKO MARAS**
Proofreading Lektura **MARKO MARAS**

INTERNETSKI IZVOR

Geoportal DGU – Geoportal, Državna geodetska uprava / State Geodetic Administration, <https://geoportal.dgu.hr>

LITERATURA

Ailincăi, S. C. 2013, *Începuturile epocii fierului în Dobrogea. Cercetările arheologice de la Revărsarea, Isaccea, județul Tulcea / The Beginning of Iron Age in Dobrudja. The Archaeological Research at Revărsarea, Isaccea, Tulcea County*, Biblioteca Istro-Pontica, Seria Arheologie 8, Muzeul Brăilei, Editura Istros, Brăila.

Balen-Letunić, D. 1996, Pretpovijesna naselja i nekropola vukovarske Lijeve bare, in: Ž. Demo, *Vukovar – Lijeva bara*, Arheološki muzej u Zagrebu, Zagreb, 32–33.

Balen-Letunić, D. 2004, Prilog arheološkoj topografiji šarengradskog prostora, *Osječki zbornik*, Vol. XXVII, 15–34.

Barnes, E. 2012, *Atlas of developmental field anomalies of the human skeleton: A paleopathology perspective*, Wiley-Blackwell, Hoboken.

Bojčić, Z. 1977, Gradac, Batina – prethistorijsko nalazište, *Arheološki pregled*, Vol. 19, 41–43.

Bojčić, Z., Dizdar, M., Hršak, T., Leleković, T. 2011, Rezultati probnih istraživanja nalazišta Batina–Sredno 2010. godine, *Annales Instituti Archaeologici*, Vol. VII, 13–19.

Brukner, O. 1959, Halštatska nekropola kod Doroslova, *Građa za proučavanje spomenika kulture Vojvodine*, Vol. III, 5–17.

Bulat, M. 1970, Gradac, Batina skela – naselje od srednjobrončanog do željeznog doba i rimski logor, *Arheološki pregled*, Vol. 12, 42–43.

Brickley, M., McKinley, J. I. (eds.) 2004, *Guidelines to the Standards for Recording Human Remains*, Institute of Field Archaeologists Paper 7, Reading: BABA0 and Institute of Field Archaeologists, Southampton.

Bunčić, M. 2007, Topografija pretpovijesnih nalazišta u Vukovaru i okolici, *Vjesnik Arheološkog muzeja u Zagrebu*, Vol. XL, 35–72.

Cavazzuti, C., Bresadola, B., d’Innocenzo, C., Interlando, S., Sperduti, A. 2019, Towards a new osteometric method for sexing ancient cremated human remains. Analysis of Late Bronze Age and Iron Age samples from Italy with gendered grave goods, *PLoS ONE*, Vol. 14(1): e0209423. <https://doi.org/10.1371/journal.pone.0209423>

Childe, V. G. 1929, *The Danube in Prehistory*, Clarendon Press, Oxford.

Demo, Ž. 1996, *Vukovar – Lijeva bara*, Arheološki muzej u Zagrebu, Zagreb.

Demo, Ž. 2009, *Ranosrednjovjekovno groblje bjelobrd-ske kulture: Vukovar – Lijeva Bara (X–XI. stoljeće) / An early medieval cemetery of the Bijelo Brdo culture: Vukovar – Lijeva Bara (10th–11th centuries)*, Katalozi i monografije VI(I), Arheološki muzej u Zagrebu, Zagreb.

Dizdar, M., Leleković, T., Hršak, T. 2021, *Batina – tisućljetni svjetionik na Dunavu / Batina – a millenium light-tower on the Danube*, katalog izložbe, Arheološki muzej Osijek, Institut za arheologiju, Osijek.

Dorn, A. 1976, Iz arheološke zbirke Gradskog muzeja u Vukovaru, *Glasnik slavonskih muzeja*, Vol. 30, 12–14.

Dujmić, D. 2021, Naselje kasnoga brončanog i starijega željeznog doba Batina (Kiskőszeg) – Gradac, in: *Batina – tisućljetni svjetionik na Dunavu / Batina – a Millenium Light-Tower on the Danube*, Dizdar D., Leleković T., Hršak T. (eds.), katalog izložbe, Arheološki muzej Osijek, Institut za arheologiju, Osijek, 30–41.

Dujmić, D. forthcoming, About the “hoard” of Daljska Planina – Kraljevac, in: *Prehistoric communities along the Danube*, Proceedings of Archaeological Museum 1, Dizdar M., Hršak T. (eds.), Archaeological Museum Osijek, Osijek, 146–155.

Ebert, M. 1908, Der Goldfund von Dálj, *Jahreshefte des österreichischen archäologischen Institutes in Wien*, Vol. XI, 259–276.

Fiala, F. 1896, Die prahistorische Ansiedlung auf dem Debelo brdo bei Sarajevo, *Wissenschaftliche Mitteilungen aus Bosnien und der Heroegovina*, Vol. IV, 38–72.

Foltiny, S. 1961, Über die Fundstelle und Bedeutung der angeblich aus Kiskőszeg stammenden Hallstattzeitlichen Bronzen des Römisch–Germanischen Zentralmuseums in Mainz, *Jahrbuch des Römisch–Germanischen Zentralmuseums Mainz*, Vol. 8, 175–189.

Gabrovec, S. 1970, Dvozankaste ločne fibule, *Godišnjak Centra za balkanološka ispitivanja*, Vol. VIII(6), 5–65.

Gergova, D. 1987, *Früh- und ältereisenzeitliche Fibeln in Bulgarien*, Prähistorische Bronzefunde XIV(7), Verlag C. H. Beck, München.

Hoffiller, V. 1938, *Dalj*, Corpus Vasorum Antiquorum 2, Librairie F. Pelikan, Beograd.

Hutinec, M., Ložnjak Dizdar, D. 2010, *Arheološke spoznaje o Sotinu. Rezultati probnih istraživanja 2008. – 2010. / Archaeological knowledge about Sotin: The results of the 2008–2010 trial excavations*, katalog izložbe Gradski muzej Vukovar, Vukovar.

Iconomu, C. 1996, Cercetările arheologice din cetatea hallstattiană de la Pocreaca-Iași, *Arheologia Moldovei*, Vol. XIX, 21–56.

Kashuba, M. 2006, Fibeln mit Bügelkugeln in der Moldau und Anmerkungen zum ägäischen Einfluß im 10.–9. Jahrhundert v.Chr., *Prähistorische Zeitschrift*, Vol. 81(2), 213–235.

Kashuba, M. 2008, Die ältesten Fibeln im Nordpontos. Versuch einer Typologie der einfachen Violionbogenfibeln im südlichen Mittel-, Süd- und Südosteuropa, *Eurasia antiqua: Zeitschrift für Archäologie Eurasiens*, Vol. 14, 193–213.

Кашуба, М. 2013, «Ускользающее» железо, или Переход к раннему железному веку в Восточном Прикарпатье, *Российский археологический ежегодник*, Vol. 3 (2013), 233–257. [Kashuba, M. 2013, “Eluding” iron: the transition to the Early Iron Age in the East Carpathian region, *Russian Archaeological Yearbook*, Vol. 3 (2013), 233–257.]

Levitski, O., Kashuba, M. 2009, Early grey wheel-made ware from east-Carpathian region (on the basis of finds from Trinca-Izvorul lui Luca settlement), in: *Pontic Grey Wares*, International Conference Bucarest – Constantza, September 30th–October 3rd 2008, Pontica XLII Supplementum I, Muzeul de istorie națională și arheologie, Constantza, 93–118.

- Ložnjak Dizdar, D.** 2004, Odnos daljske i bosutske grupe na prostoru hrvatskog Podunavlja početkom starijega željeznog doba, *Prilozi Instituta za arheologiju u Zagrebu*, Vol. 21, 19–36.
- Ložnjak Dizdar, D.** 2014, Two Graves of the Late Urn-field Period from Belišće (Podravina Region, Croatia), in: *Studia Praehistorica in Honorem Janez Dular*, Tecco Hvala S. (ed.), Opera Instituti Archaeologici Sloveniae 30, Institut za arheologiju Znanstvenoraziskovalnog centra Slovenske akademije znanosti in umetnosti, Ljubljana, 81–90. <https://doi.org/10.3986/9789610503651>
- Ložnjak Dizdar, D.** 2019a, Status žena u podunavskim zajednicama u starijem željeznom dobu – Primjer groba 1 iz Sotina / Status of women in the Daube Basin communities in the Early Iron Age – Example of grave 1 from Sotin, *Prilozi Instituta za arheologiju u Zagrebu*, Vol. 36, 85–120. <https://doi.org/10.33254/piaz.36.3>
- Ložnjak Dizdar, D.** 2019b, Notes on several finds from the beginning of the Early Iron Age in the Danube area, in: *Papers in honour of Rastko Vasić 80th birthday*, Filipović V., Bulatović A., Kapuran A. (eds.), Institute of Archaeology, Beograd, 247–257.
- Ložnjak Dizdar, D., Dizdar, M.** 2014, Terenski pregled i arheološki nadzor na rekonstrukciji državne ceste D212, Kneževi Vinogradi – Zmajevac, *Annales Instituti Archaeologici*, Vol. X, 21–24.
- Ložnjak Dizdar, D., Filipović, S., Rajić Šikanjić, P., Radović, S., Forenbaher, S.** 2018, *Pogrebni običaji i društvo kasnog brončanog doba na jugu Karpatske kotline, svezak 1: Groblje Slatina, 11. st. pr. Kr. / Late Bronze Age Mortuary Practices and Societies in the Southern Carpathian Basin, Volume 1: Slatina cemetery, 11th century BC*, Monographiae Instituti archaeologici 13, Institut za arheologiju, Zagreb.
- Ložnjak Dizdar, D., Rajić Šikanjić, P., Hulina, M., Dizdar, M.** in print, Childhood in Batina at the end of the Late Bronze Age and the beginning of the Early Iron Age, *Starrinar*, Vol. LXXV.
- Majnarić-Pandžić, N.** 1994, Sjaj bronce i željeza u praskozorju povijesti, in: *Vukovar. Vjekovni hrvatski grad na Dunavu*, Feletar D., Horvat V., Jurčević J., Karač Z., Karaman I., Majnarić-Pandžić N., Marić R., Potrebica F., Tomičić Ž., Wertheimer-Baletić A. (eds.), Nakladnička kuća dr. Feletar, Koprivnica, 65–80.
- Majnarić-Pandžić, N.** 1998, Brončano i željezno doba, in: S. Dimitrijević, T. Težak-Gregl, N. Majnarić-Pandžić, *Prapovijest*, Povijest umjetnosti u Hrvatskoj 1, Naprijed, Zagreb, 161–369.
- Major, I., Dani, J., Kiss, V., Melis, E., Patay, R., Szabó, G., Hubay, K., Túri, M., Futó, I., Huszánk, R., Jull, A. J. T., Molnár, M.** 2019a, Adoption and evaluation of a sample pretreatment protocol for radiocarbon dating of cremated bones at HEKAL, *Radiocarbon*, Vol. 61(1), 159–171. <https://doi.org/10.1017/RDC.2018.41>
- Major, I., Futó, I., Dani, J., Cserpák-Laczi, O., Gasparik, M., Jull, A. J. T., Molnár, M.** 2019b, Assessment and development of bone preparation for radiocarbon dating at HEKAL, *Radiocarbon*, Vol. 61(5), 1551–1561. <https://doi.org/10.1017/RDC.2019.60>
- Maráz, B.** 1979, Zur Frühhallstattzeit in Süd-Pannonien, *A Janus Pannonius Múzeum Évkönyve*, Vol. XXIII (1978), 145–164.
- Maráz, B.** 1987, Későbronzkori magaslatti település Pécs-Jakabhegyen (Előzetes közlemény az 1976–83. évi ásatásokról), *A Janus Pannonius Múzeum Évkönyve*, Vol. 30–31 (1985–1986), 39–64.
- McKinley, J. I.** 2004, Compiling a skeletal inventory: cremated human bone, in: M. Brickley, and J. I. McKinley, eds. *Guidelines to the Standards for Recording Human Remains. Institute of Field Archaeologists Paper 7*, Southampton, Reading: BBAO and Institute of Field Archaeologists, 9–13.
- Medović, P.** 1978, *Naselja starijeg gvozdenog doba u jugoslovenskom Podunavlju*, Dissertationes et Monographiae XXII, Pokrajinski zavod za zaštitu spomenika kulture Vojvodine, Savez arheoloških društava Jugoslavije, Beograd.
- Medović, P., Medović, I.** 2011, *Gradina na Bosutu – naselje starijeg gvozdenog doba*, Pokrajinski zavod za zaštitu spomenika kulture, Planoteum d. o. o., Novi Sad.
- Metzner-Nebelsick, C.** 1996, Die Urnenfelder- und Hallstattzeit in Südostpannonien – eine Region im Spannungsfeld zwischen Osthallstattkreis, karpätenländisch-balkanischer Eisenzeit und Steppenkultur, in: *Die Osthallstattkultur*, Akten des Internationalen Symposiums, Sopron 10.–14. Mai 1994, Jerem E., Lippert A. (eds.), *Archaeolingua Series Maior 7*, Archaeolingua, Budapest, 283–313.
- Metzner-Nebelsick, C.** 1997, Hallstattzeitliche Zentren in Südostpannonien, *Zalai Múzeum*, Vol. 8, 9–26.
- Metzner-Nebelsick, C.** 1998, Abschied von den «Thrako-Kimmeriern»? – Neue Aspekte der Interaktion zwischen karpätenländischen Kulturgruppen der späten Bronze- und frühen Eisenzeit mit der osteuropäischen Steppenkoine, in: *Das Karpatenbecken und die osteuropäische Steppe. Nomadenbewegungen und Kulturaustausch in den vorchristlichen Metallzeiten (4000–500 v. Chr.)*, Hänsel B., Machnik J. (eds.), *Prähistorische Archäologie in Südosteuropa 12*, Verlag Marie Leidorf GmbH, München/Rahden Westfalen, 361–422.
- Metzner-Nebelsick, C.** 2002, *Der «Thrako-Kimmerische» Formenkreis aus der Sicht der Urnenfelder- und Hallstattzeit im südöstlichen Pannonien*, Vorgeschichtliche Forschungen 23, Verlag Marie Leidorf GmbH, Rahden/Westfalen.
- Metzner-Nebelsick, C.** 2005, Despre importanța cronologică și cultural-istorică a depozitelor din România în epoca târzie a bronzului și în epoca timpurie a fierului, Bronzefunde von Târgu Lăpuș, Kr. Maramureș, in: *Bronzefunde aus Rumänien II. Beiträge zur Veröffentlichung und Deutung bronze- und älterhallstattzeitlicher Metallfunde in europäischen Zusammenhang*, Soroceanu T. (ed.), Biblioteca Muzeului Bistrița Seria Historica 11, Editura Accent, Bistrița – Cluj-Napoca, 317–342.
- Metzner-Nebelsick, C.** 2017, At the crossroads of the Hallstatt East, in: *Connecting elites and regions. Perspectives on contacts, relations and differentiation during the Early Iron Age Hallstatt C period in Northwest and Central Europe*, Schumann R., van der Vaart-Verschoof S. (eds.), Sidestone Press, Leiden, 349–379.
- Михайлов, Ф.** 2020, No 23. Некропол от VII – VI в. пр. Хр. над с. Врабча, общ. Трън, 021, *Археологически Открития и Разкопки През 2020 г.*, Vol. I, 388–391.

- Minichreiter, K.** 1976, Batina Skela, općina Beli Manastir – prahistorijski i antički lokalitet, *Arheološki pregled*, Vol. 18, 37–40.
- Minichreiter, K.** 1985a, Erdut «Veliki Varod, Mali Varod, Žarkovac», Osijek – višeslojno prapovijesno nalazište, *Arheološki pregled*, Vol. 24, 25–30.
- Minichreiter, K.** 1985b, Aljmaš «Podunavlje», Osijek – višeslojno prapovijesno naselje, *Arheološki pregled*, Vol. 24, 23–25.
- Minichreiter, K.** 1987, Arheološko blago Baranje, *Anali Zavoda za znanstveni rad u Osijeku*, Vol. 5 (1986–1987), 43–142.
- Molnár, M., Janovics, R., Major, I., Orsovski, J., Gönczi, R., Veres, M., Leonard, A. G., Castle, S. M., Lange, T. E., Wacker, L., Hajdas, I., Jull, A. J. T.** 2013, Status report of the new AMS C-14 preparation lab of the Hertelendi Laboratory of Environmental Studies, Debrecen, Hungary, *Radiocarbon*, Vol. 55(2), 665–676. <https://doi.org/10.1017/S0033822200057829>
- Molnár, M., Rinyu, L., Veres, M., Seiler, M., Wacker, L., Synal, H. A.** 2013, EnvironMICADAS: a mini 14C AMS with enhanced Gas Ion Source Interface in the Hertelendi Laboratory of Environmental Studies (HEKAL), Hungary, *Radiocarbon*, Vol. 55(2), 338–344. <https://doi.org/10.1017/S0033822200057453>
- Pare, Ch. F. E.** 2015, Normative Change at the Start of the Iron Age: The Case of Transylvania, in: *Autour du „banquet“. Modèles de consommation et usages sociaux*, Esposito A. (ed.), Éditions Universitaires de Dijon, Dijon, 275–312.
- Pare, Ch. F. E.** 2025, *Iron and the Iron Age. The Introduction of Iron in Europe and Western Asia*, Archaeopress Publishing Ltd, Oxford.
- Patek, E.** 1990, A Szabó János Győző által feltárt „Preszkíta“ síranyag. A Fűzesabony–Mezőcsát típusú temetkezések újabb emlékei Heves megyében, *Agria*, Vol. XXV–XXVI (1989–1990), 61–118.
- Patek, E.** 1993, *Westungarn in der Hallstattzeit*, Acta humaniora. Quellen und Forschungen zur prähistorischen und provinzialrömischen Archäologie 7, Verlag Chemie GmbH, Weinheim.
- Pinterović, D.** 1971, Batina – praistorijski i antički nalazi, *Arheološki pregled*, Vol. 13, 55–58.
- Popović, P., Vukmanović, M.** 1998, *Vajuga – Pesak, Nekropola starijeg gvozdenog doba*. Đerdapske sveske, Posebna izdanja 3, Arheološki institut, Beograd.
- Purić, J.** 1901, Prehistorijske naselbine u okolini Erduta, *Viestnik hrvatskoga arheološkoga društva*, n.s. Vol. V, 177–183.
- Reimer, P. J., Austin, W. E. N., Bard, E., Bayliss, A., Blackwell, P. G., Bronk Ramsey, Ch., Butzin, M., Cheng, H., Edwards, R. L., Friedrich, M., Grootes, P. M., Guilderson, T. P., Hajdas, I., Heaton, T. J., Hogg, A. G., Hughen, K. A., Kromer, B., Sturt W Manning, S. W., Muscheler, R., Palmer, J. G., Pearson, Ch., van der Plicht, J., Reimer, R. W., Richards, D. A., Scott, E. M., Southon, J. R., Turney, Ch. S. M., Wacker, L., Adolphi, F., Büntgen, U., Capano, M., Fahrni, S. M., Fogtmann-Schulz, A., Friedrich, R., Köhler, P., Kudsk, S., Miyake, F., Olsen, J., Reinig, F., Sakamoto, M., Sookdeo, A., Talamo, S.** 2020, The IntCal20 northern hemisphere radiocarbon age calibration curve (0–55 cal kBP), *Radiocarbon*, Vol. 62(4), 725–757. <https://doi.org/10.1017/RDC.2020.41>
- Simion, G.** 2003, *Cultura antice in zona Gurilor Dunării I*. Preistorie si protoistorie, Editura Nereamia Napoca, Cluj-Napoca.
- Stojanov, T.** 1997, *Early Iron Age Tumular Necropolis, Sborjanovo I*, Historical Museum Isprih, Sofia.
- Šimić, J.** 1980, Zaštitna arheološka iskopavanja regionalnog zavoda za zaštitu spomenika u Osijeku, *Arheološki pregled*, Vol. 21, 228–229.
- Šimić, J.** 1984, Stariji nalazi bosutske grupe iz Vukovara, in: *Arheološka istraživanja u istočnoj Slavoniji i Baranji*, Znanstveni skup, Vukovar 6–9. X 1981, Manjarić-Pandžić N. (ed.), Izdanja Hrvatskog arheološkog društva 9, Hrvatsko arheološko društvo, Zagreb, 107–115.
- Šimić, J.** 1996, Nalazišta daljske grupe u Daljskoj planini – Prilog proučavanju brončanog i starijeg željeznog doba u sjeveroistočnoj Hrvatskoj, *Prilozi Instituta za arheologiju u Zagrebu*, Vol. 10, 35–47.
- Šimić, J.** 2001, Brončano i starije željezno doba na području grada Osijeka, *Osječki zbornik*, Vol. 24–25 (1996–1999), 23–42.
- Šimić, J.** 2002, Zaštitno sondiranje na prapovijesnom nalazištu Batina-Gradac, *Obavijesti Hrvatskog arheološkog društva*, Vol. XXXIV(3), 56–59.
- Šimić, J.** 2004, Grupa Dalj / Dalj Group, in: *Ratnici na razmeđu istoka i zapada. Starije željezno doba u kontinentalnoj Hrvatskoj / Warriors at the crossroads of East and West. Early Iron Age in continental Croatia*, Balen-Letunić D. (ed.), Arheološki muzej u Zagrebu, Zagreb, 36–77.
- Tasić, N.** 1971, Bosutska grupa – nova kultura starijeg gvozdenog doba na području Vojvodine i uže Srbije, *Materijali Saveza arheoloških društava Jugoslavije*, Vol. VII, 61–83.
- Tasić, N.** 1974, Bronzano doba. Starije gvozdeno doba Vojvodine, in: *Praistorija Vojvodine*, Tasić N. (ed.), Institut za izučavanje istorije Vojvodine, Savez arheoloških društava Jugoslavije, Novi Sad, 185–276.
- Tasić, N.** 1979, Teritorijalno, kulturno i hronološko razgraničenje daljske i bosutske kulture, *Balkanica*, Vol. X, 7–23.
- Tasić, N.** 1994, Nekropola kod Doroslava i njen značaj za proučavanje starijeg gvozdenog doba Podunavlja, in: *Kulture gvozdenog doba jugoslovenskog Podunavlja / The Iron Age Cultures of Yugoslav Danube Region*, Tasić N. (ed.), Balkanološki institut Srpske akademije nauka i umetnosti, Posebna izdanja 55, Beograd, 9–19.
- Teržan, B.** 2009, Kaukasisches Symbolgut in Südosteuropa – Bemerkungen zu Goldfibeln von Michalków – Fokoru – Dalj, in: *Der Schwarzmeerraum vom Äneolithikum bis in die Früheisenzeit (5000–500 v. Chr.). Kommunikationsebenen zwischen Kaukasus und Karpaten*, Internationale Fachtagung von Humboldtianern für Humboldtianer im Humboldt-Kolleg in Tiflis/Georgien, 17.–20. Mai 2007, Apakidze J., Govedarica B., Hänsel B. (eds.), Prähistorische Archäologie in Südosteuropa 25, Rahden/Westfalen, 190–216.
- Trajković, Č.** 1974, Doroslovo, Sombor – Halštatska nekropola, *Arheološki pregled*, Vol. 16, 62–64.
- Trajković, Č.** 1975, Doroslovo, Sombor – halštatska nekropola, *Arheološki pregled*, Vol. 17, 43–45.
- Trajković, Č.** 1977, *Halštatska nekropola kod Doroslava*, Gradski muzej Sombor, Sombor.

Trajković, D. 2008, *Đepfeld – nekropola starijeg gvozdenog doba kod Doroslova / Đepfeld – Early Iron Age Necropolis at Doroslovo*, Gradski muzej Sombor, Sombor.

Vasić, R. 1987, Daljska grupa. Bosutska grupa, in: *Praistorija jugoslavenskih zemalja. V: Željezno doba*, Benac A. (ed.), Centar za balkanološka ispitivanja Akademije nauka i umjetnosti Bosne i Hercegovine, Sarajevo, 533–554.

Vasić, R. 1999, *Die Fibeln im Zentralbalkan*, Prähistorische Bronzefunde XIV(12), Franz Steiner Verlag, Stuttgart.

Vasić, R. 2008, Doroslovo, analiza arheološkog matejija, in: D. Trajković, *Đepfeld – nekropola starijeg gvozdenog doba kod Doroslova / Đepfeld – Early Iron Age Necropolis at Doroslovo*, Gradski muzej Sombor, Sombor, 339–354.

Vasić, R., Kapuran, A. 2007, Još jednom o ostavi iz Šarengrada, *Rad vojvođanskih muzeja*, Vol. 49, 37–42.

Vinski, Z. 1955, Prethodni izvještaj o iskopavanju na «Lijevoj bari» u Vukovaru 1951., 1952. i 1953. godine, *Ljetopis Jugoslavenske akademije znanosti i umjetnosti*, Vol. 60, 231–255.

Vinski, Z. 1959, Ausgrabungen in Vukovar, *Archaeologica Jugoslavica*, Vol. III, 99–109.

Vinski, Z., Vinski-Gasparini, K. 1962, O utjecajima istočno-alpske halštatske kulture i balkanske ilirske kulture na slavonsko-sremsko Podunavlje, *Arheološki radovi i rasprave*, Vol. II, 263–293.

Vinski-Gasparini, K. 1973, *Kultura polja sa žarama u sjevernoj Hrvatskoj*, Monografije Filozofskog fakulteta Zadar 1, Filozofski fakultet, Zadar.

Vinski-Gasparini, K. 1978, Osvrt na istraživanja kasnog brončanog i starijeg željeznog doba u sjevernoj Hrvatskoj, in: *Arheološka istraživanja u sjeverozapadnoj Hrvatskoj*, Znanstveni skup, Varaždin 22.-25. X. 1975., Rapanić Ž. (ed.), Izdanja Hrvatskog arheološkog društva 2, Hrvatsko arheološko društvo, Zagreb, 129–146.

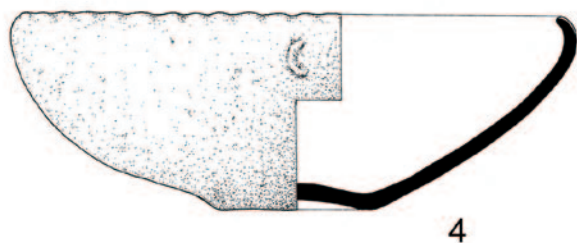
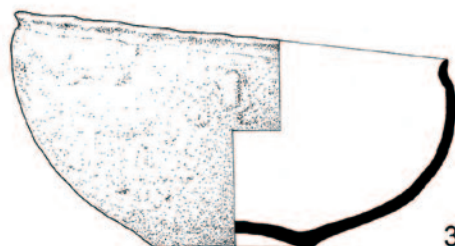
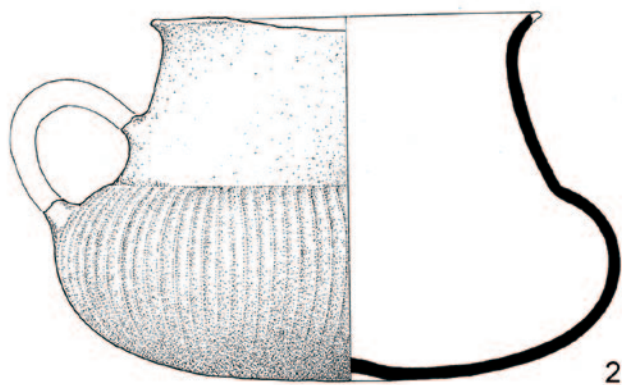
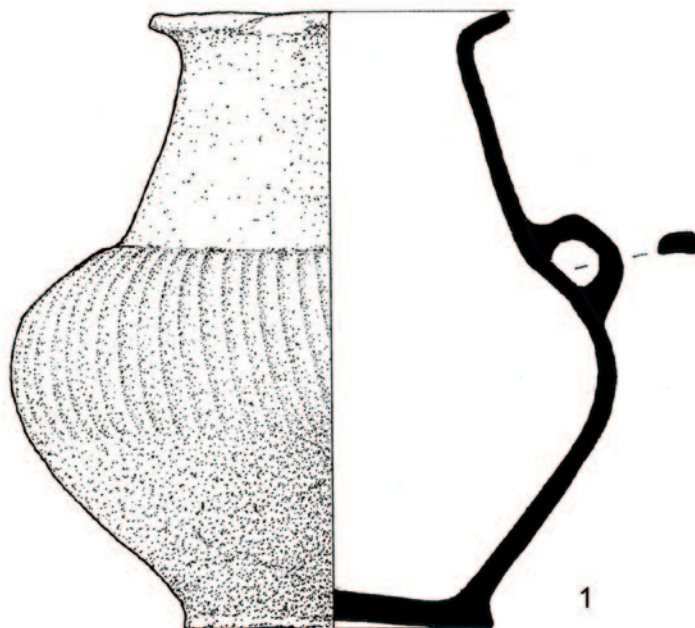
Vinski-Gasparini, K. 1983, Kultura polja sa žarama sa svojim grupama, in: *Praistorija jugoslavenskih zemalja. IV: Bronzano doba*, Benac A. (ed.), Centar za balkanološka ispitivanja Akademije nauka i umjetnosti Bosne i Hercegovine, Sarajevo, 547–667.

Vukmanić, I. 2014, Batina – Gradac (k.č. 949), r. br. 2, *Hrvatski arheološki godišnjak*, Vol. 10 (2013), 9–10.

Blok VI - 13
polje
Ž - 27

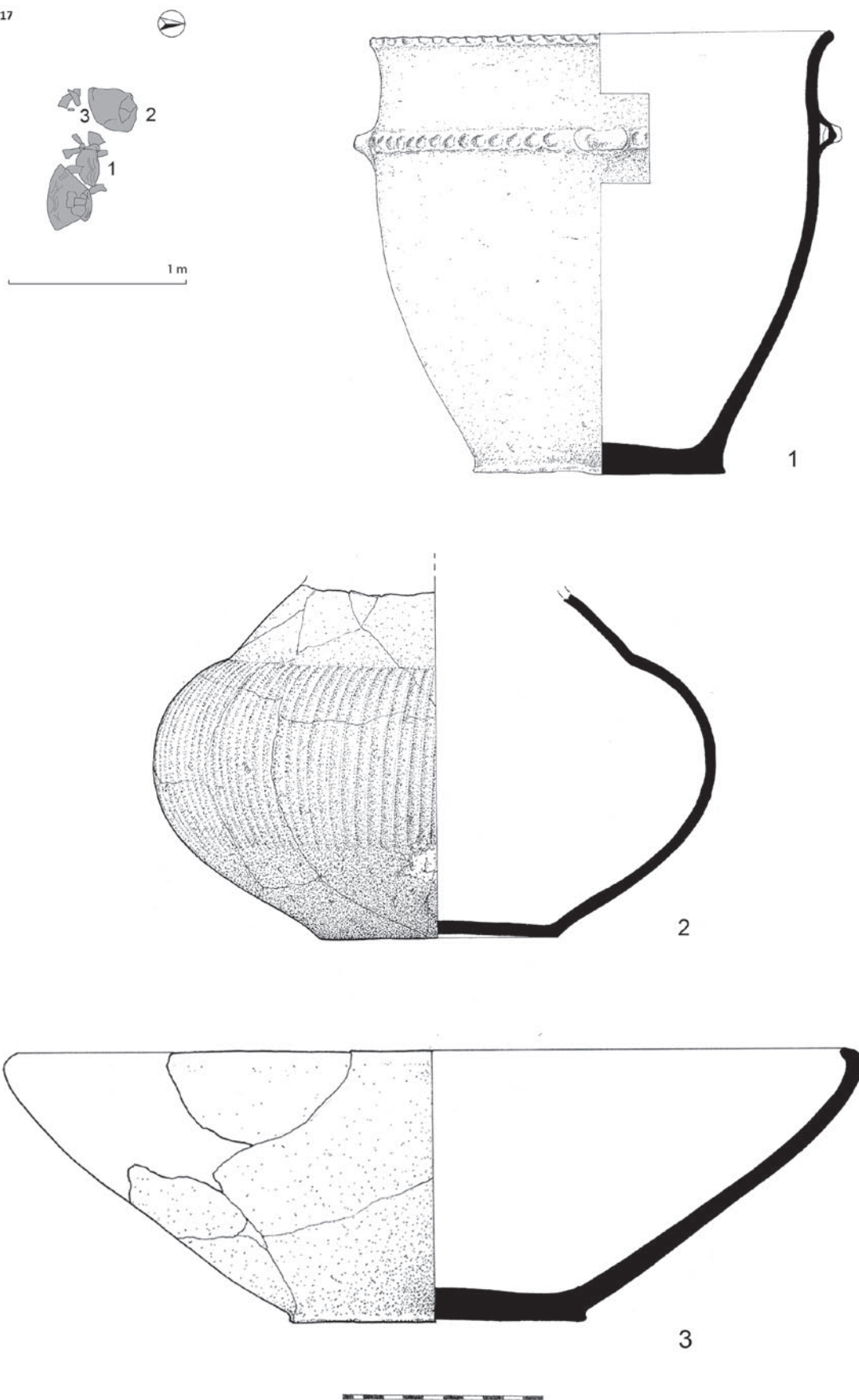


1 m

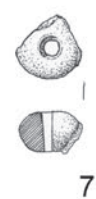
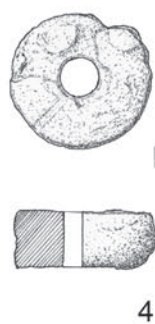
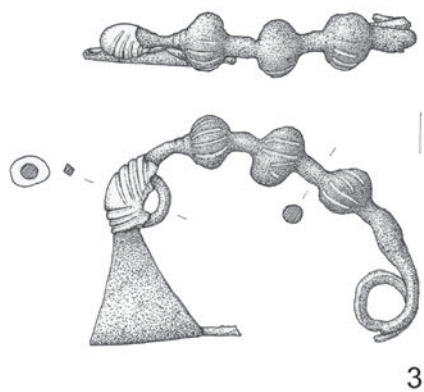
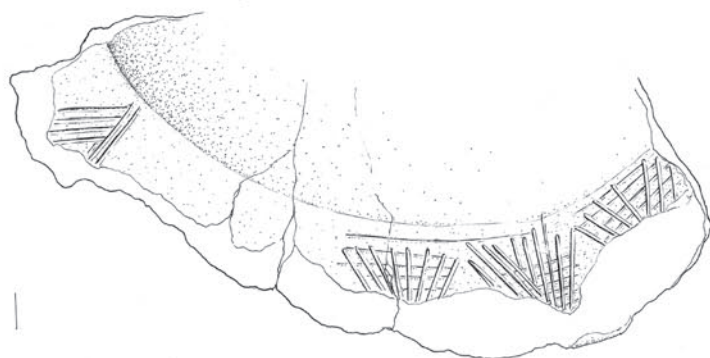
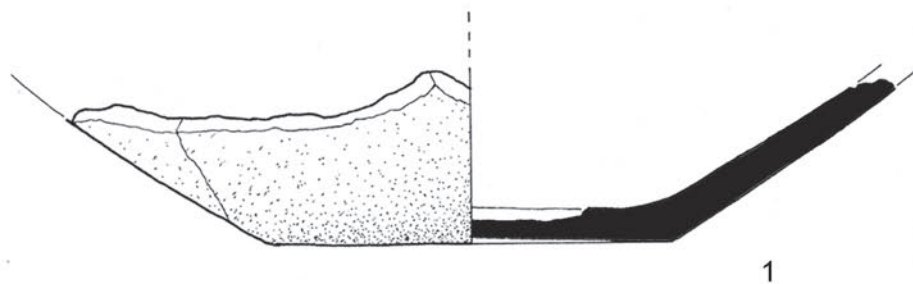


T. 1 – Tlocrt i nalazi iz groba Ž27 (nacrtala: M. Galić; izradio: I. Drnić)
Pl. 1 – Plan and finds from grave Ž27 (drawn by: M. Galić; made by: I. Drnić)

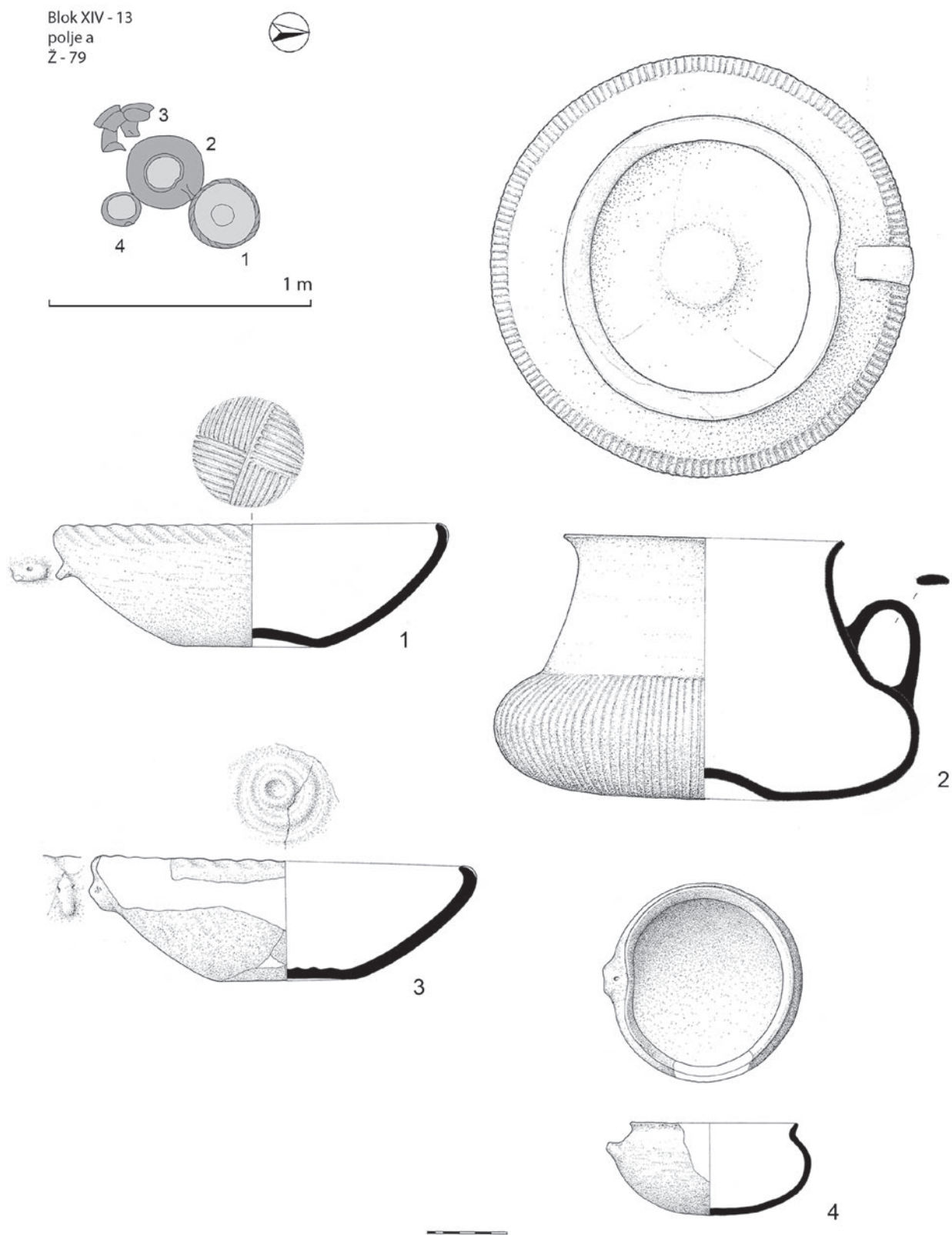
Blok XIV-17
polje d
Ž - 75



T. 2 – Tlocrt i nalazi iz groba Ž75 (nacrtala: M. Galić; izradio: I. Drnić)
Pl. 2 – Plan and finds from grave Ž75 (drawn by: M. Galić; made by: I. Drnić)



T. 3 – Nalazi iz groba Ž75 (nacrtala: M. Galić; izradio: I. Drnić)
Pl. 3 – Finds from grave Ž75 (drawn by: M. Galić; made by: I. Drnić)

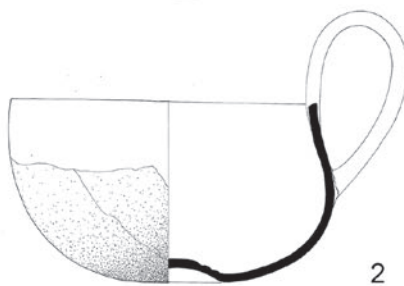
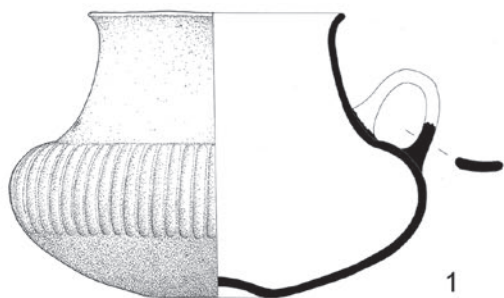
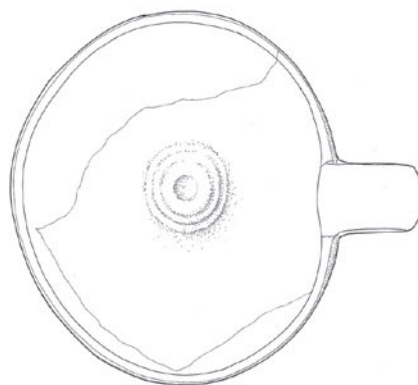
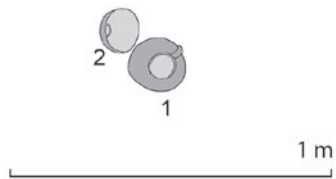


T. 4 – Tloct i nalazi iz groba Ž79 (nacrtala: M. Galić; izradio: I. Drnić)
Pl. 4 – Plan and finds from grave Ž79 (drawn by: M. Galić; made by: I. Drnić)

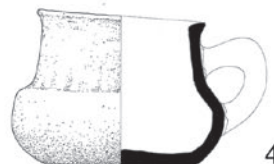
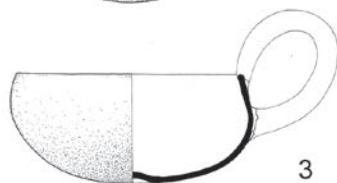
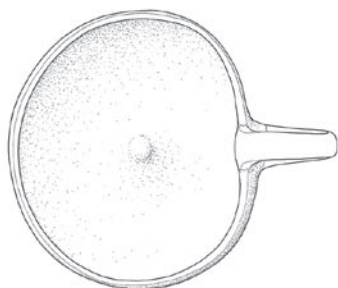


T. 5 – Tločrt i nalazi iz groba Ž80 (nacrtala: M. Galić; izradio: I. Drnić)
 Pl. 5 – Plan and finds from grave Ž80 (drawn by: M. Galić; made by: I. Drnić)

Blok XII-6
polje C
Ž - 92



5 cm



T. 6 – Nalazi iz groba Ž80, tlocrt i nalazi iz groba Ž92 (nacrtala: M. Galić; izradio: I. Drnić)

Pl. 6 – Finds from grave Ž80, and plan and finds from grave Ž92 (drawn by: M. Galić; made by: I. Drnić)

