

NOVI DOPRINOS POZNAVANJU GRADINSKIH LOKALITETA OTOKA VISA

A NEW CONTRIBUTION TO THE STUDY OF HILLFORT SITES ON THE ISLAND OF VIS

FILIP BUDIĆ

Odsjek za povijest, Filozofski
fakultet Sveučilišta u Zagrebu
*Department of history, Faculty of
Humanities and Social sciences in Zagreb*
Ivana Lučića 3
HR-10000 Zagreb
fbudic@ffzg.hr

MILA ERCEG

Vodička 4
HR-22000 Šibenik
merceg@ffzg.hr

IVO ČEVID

Odsjek za arheologiju, Filozofski
fakultet Sveučilišta u Zagrebu
*Department of archaeology
Faculty of Humanities and Social
sciences in Zagreb*
Ivana Lučića 3
HR-10000 Zagreb
icevid@ffzg.hr

PETRA GRIZELJ

Arheološki muzej Osijek
Museum of archaeology in Osijek
Trg Sv. Trojstva 2
HR - 31 000 Osijek
petra.grizelj@amo.hr

VINKO UDILJAK

Zavičajni muzej grada Visa
Municipal Heritage Museum of Vis
Šetalište Viški boj 12
HR-21480 Vis
vinko.udiljak@zmgv.hr

UDK: 903.4(497.583Vis) "638"

DOI: 10.15291/archo.4958

PREGLEDNI ČLANAK / REVIEW PAPER

Primljeno / Received: 2025-2-15

Prihvaćeno / Accepted: 2025-5-15

KLJUČNE RIJEČI:

Vis, gradine, gomile,
vizualne komunikacije

Terenska istraživanja na Visu provedena 2022. i 2024. omogućila su upotpunjavanje dosadašnjih razumijevanja prapovijesne mreže naselja i njihovih funkcija te točne društvene dinamike. Pregled lokaliteta Grodac i Štracine omogućio je revizije dosadašnjih interpretacija. Na Grodcu su precizirane granice gradinskog prostora, dok je na Štracina revidirana dosadašnja hipoteza o gradinskom naselju. Analizom pokretnog materijala iznose se novi dokazi o trgovinskoj razmjeni između urođeničkih zajednica i Grka tijekom željeznog doba, a nadopunjen je i vremenski horizont pojedinih lokaliteta. Terenskim pregledom prapovijesnih gomila i gradina utvrđeni su sustavi vizualne komunikacije između ključnih točaka koje su omogućavale strateški nadzor nad kopnenim i plovnim putovima.

KEY WORDS:

Vis, hillforts, cairns,
visual communication

Fieldwork carried out on Vis in 2022 and 2024 has made it possible to supplement existing understanding of its network of prehistoric settlements and their functions, as well as the island's social dynamics. Surveys of the Grodac and Štracine sites enabled a revision of previous interpretations. At Grodac, the boundaries of the hillfort area were defined more precisely, while at Štracine the previous hypothesis of a hillfort settlement was revised. Analysis of portable material provided new evidence of trade exchange between indigenous communities and the Greeks during the Iron Age, and the chronological framework of certain sites was also refined. The field survey of prehistoric cairns and hillforts identified systems of visual communication between key points, which allowed strategic control over land and maritime routes.

UVOD

Tijekom 2022. i 2024. obavljena su dva terenska pregleda na otoku Visu u sklopu studentskih projekata koja su financijski podržali Filozofski fakultet Sveučilišta u Zagrebu, Grad Vis i udruga Kulissa. To su „*Na ilirski nasrnu brod*”: *Rekognosciranje prapovijesnog krajolika na južnim padinama otoka Visa* (voditelj Vinko Udiljak) i *ΠΛΕΙΝ ΑΝΑΓΚΗ: Terenski pregled prapovijesnog krajolika gradinskih lokaliteta Grodac i Štracine na otoku Visu* (voditeljica Mila Erceg). Oba su projekta osmislili dvopredmetni studenti diplomskog studija povijesti i arheologije Mila Erceg, Petra Grizelj i Vinko Udiljak te student diplomskog studija arheologije Ivo Čevd. Mentori projekata bili su prof. dr. sc. Helena Tomas s Katedre za klasičnu arheologiju Odsjeka za arheologiju Filozofskog fakulteta Sveučilišta u Zagrebu te dr. sc. Filip Budić s Katedre za staru povijest Odsjeka za povijest Filozofskog fakulteta Sveučilišta u Zagrebu. U terenskom pregledu sudjelovali su Filip Budić, Ivo Čevd, Santa Duvnjak, Mila Erceg, Petra Grizelj, Jurica Triplat i Vinko Udiljak.

PRAPOVIJEST OTOKA VISA

Otok Vis pripada srednjodalmatinskoj otočnoj skupini s površinom od 89,7 km². Od dalmatinskog kopna udaljen je 45 km, pa je stoga i najveći pučinski otok na Jadranu.¹ Uz obilne morske resurse, Visom dominira nekoliko krških ravni, među kojima su Dracevo, Plisko i Velo poje, Molo i Velo Jubišće, Molo i Velo Voščica, Tihobraće, Dol te Molo i Velo Zlo poje.² Zbog zemljopisnog položaja i prirodnih predispozicija, Vis je od prapovijesti bio povoljno mjesto za naseljavanje.³

¹ KRKLEC, LOZIĆ, ŠILJEG 2012: 291.

² *Ibid.*: 291–294.

³ PROTIĆ 1985: 43; ČARGO 2021b: 23–29.

INTRODUCTION

In 2022 and 2024, two field surveys were carried out on the island of Vis as part of student projects financially supported by the University of Zagreb's Faculty of Humanities and Social Sciences, the City of Vis and the association Kulissa. These were “*Na ilirski nasrnu brod*”: *Reconnaissance of the prehistoric landscape on the southern slopes of the island of Vis* (directed by Vinko Udiljak) and *ΠΛΕΙΝ ΑΝΑΓΚΗ: Field survey of the prehistoric landscape of the hillfort sites of Grodac and Štracine on the island of Vis* (directed by Mila Erceg). Both projects were conceived by joint-degree students of the graduate programme in history and archaeology Mila Erceg, Petra Grizelj and Vinko Udiljak, together with Ivo Čevd, a student of the graduate programme in archaeology. The project mentors were Professor Helena Tomas from the Chair of Classical Archaeology, Department of Archaeology, Faculty of Humanities and Social Sciences, University of Zagreb, and Dr. Filip Budić from the Chair of Ancient History, Department of History, Faculty of Humanities and Social Sciences, University of Zagreb. Participants in the field survey were Filip Budić, Ivo Čevd, Santa Duvnjak, Mila Erceg, Petra Grizelj, Jurica Triplat and Vinko Udiljak.

PREHISTORY OF THE ISLAND OF VIS

The island of Vis is one of the Central Dalmatian Islands and covers an area of 89.7 km². It lies 45 km from the Dalmatian mainland and is the largest open-sea island in the Adriatic.¹ In addition to abundant marine resources, Vis is characterised by several karstic plains, among them Dracevo, Plisko and Velo Poje, Molo and Velo Jubišće, Molo and Velo Voščica, Tihobraće, Dol, and Molo and Velo Zlo Poje.² Because of its geographical position and natural features,

¹ KRKLEC, LOZIĆ, ŠILJEG 2012: 291.

² *Ibid.*: 291-294.

Prapovijest otoka Visa relativno je slabo poznata zbog manjka sustavnih arheoloških iskopavanja. Većina podataka potječe iz terenskih pregleda ili manjih sondažnih istraživanja provedenih u drugoj polovici 20. stoljeća.⁴ Istraživanja pokazuju da je otok nastanjen već od neolitika o čemu svjedoči keramika *impresso* kulture i kremeniti nožići pronađeni u Tvardoj špilji. Nalazi nisu pronađeni u arheološkom sloju, već su prikupljeni na površini unutar špilje pa izostaju precizniji detalji.⁵ S nepoznatog nalazišta potječe jedan polikromni srednjoneolitički ulomak, okarakteriziran kao ripolska (*Ripoli*) ili *figulina* keramika. Iako neki autori tvrde da je primjerak uvezen iz Italije,⁶ dok su drugi skloniji svrstati ga u lokalnu produkciju,⁷ ulomak nedvojbeno ukazuje na društveni kontakt i dijeljenje kulturnog sadržaja između istočne i zapadne obale, a samim time možda i na izražavanje zajedničkog identiteta. Lončarija sličnog tipa pojavljuje se i na drugim jadranskim lokalitetima.⁸ Visa je od neolitičkog perioda stajao na važnoj plovidbenoj ruti koja je povezivala srednju Dalmaciju preko velikih srednjodalmatinskih otoka (Brač, Hvar, Visa) s poluotokom Monte Gargano. Osim keramike, o kolanju robe ovim pomorskim pravcem svjedoče nalazi opsidijana pronađenog na Palagruži,⁹ kampinijenski tip sjekire iz Markove špilje na Hvaru, sjekire od žada i nefrita s neolitičkih lokaliteta srednje Dalmacije i slično.¹⁰ Eneolitički materijal s Visa za sada nije pronađen u intaktnom sloju, ali se ulomci iz špilje Mramorcina povezuju s tim

Vis has been a favourable place for settlement from prehistoric times.³

Knowledge of the prehistory of Visa is relatively poor due to the lack of systematic archaeological excavations. Most of the available data come from field surveys or small-scale trial excavations carried out in the second half of the 20th century.⁴ These indicate that the island was already inhabited during the Neolithic, as evidenced by *impressa* culture pottery and flint blades found in Tvarda Špilja. The finds were not recovered from an archaeological layer but collected from the surface inside the cave, so more precise details are lacking.⁵ A polychrome Middle Neolithic sherd, described as *Ripoli* or *figulina* ware, originates from an unknown site. Although some authors argue that the specimen was imported from Italy,⁶ while others are more inclined to classify it as a local product,⁷ the sherd clearly points to social contact and the sharing of cultural traits between the eastern and western coasts, and thus possibly to the expression of a shared identity, too. Pottery of a similar type also appears at other Adriatic sites.⁸ From the Neolithic period onwards, Visa lay on an important seafaring route that connected central Dalmatia, via the major central Dalmatian islands (Brač, Hvar, Visa), with the Monte Gargano peninsula. In addition to pottery, the movement of goods along this maritime route is confirmed by finds such as obsidian discovered on Palagruža,⁹ a Campignian-type axe from Markova Špilja on Hvar, and jade and nephrite axes from Neolithic sites in central Dalmatia, among others.¹⁰ No Aeneolithic material from

⁴ O povijesti istraživanja na Visu vidjeti više u KIRIGIN 1999: 406–431; KIRIGIN *et al.* 2006: 9–13; ČARGO 2021a: 17–20. Objave istraživanja željeznodobnih lokaliteta vide se u bilješkama i bibliografiji ovog rada.

⁵ KAISER, FORENBAHER 2002: 103; ČARGO 2021b: 23.

⁶ ČARGO 2021b: 23.

⁷ TEOH, MCCLURE, PODRUG 2014: 352, 357.

⁸ *Ibid.*: 350–352, 357.

⁹ Palagruža ima pretežno opsidijan s Lipara, a tek mali broj ima podrijetlo s grčkog otoka Mela (FORENBAHER 2018: 89).

¹⁰ PETRIĆ 2004: 200.

³ PROTIĆ 1985: 43; ČARGO 2021b: 23–29.

⁴ For the history of research on Visa see KIRIGIN 1999: 406–431; KIRIGIN *et al.* 2006: 9–13; ČARGO 2021a: 17–20. Publications of investigations of Iron Age sites are listed in the notes and bibliography of this paper.

⁵ KAISER, FORENBAHER 2002: 103; ČARGO 2021b: 23.

⁶ ČARGO 2021b: 23.

⁷ TEOH, MCCLURE, PODRUG 2014: 352, 357.

⁸ *Ibid.*: 350–352, 357.

⁹ Palagruža has obsidian finds predominantly from Lipari, with only a small number originating from the Greek island of Melos (FORENBAHER 2018: 89).

¹⁰ PETRIĆ 2004: 200.

razdobljem.¹¹

Brončanodobnih nalaza ima iz Tvarde špile, dok su sondažnim istraživanjima na Prirovu pronađeni ostaci podnice nastambe i manja količina keramike, datirani radiokarbonskom metodom između 15. i 14. st. pr. Kr.¹² Međutim, valja istaknuti da je struka uputila kritiku ovim rezultatima zbog izostanka opširnije potkrijepe dokumentacijom i slikovnim materijalom.¹³ Važan je nalaz jednodijelna lučna fibula s dva zadebljanja na luku koja pripada liburnskom kulturnom krugu, a datira se u drugu polovinu 11. st. pr. Kr.¹⁴ Nekoliko brončanih predmeta može se stilski povezati s kasnim brončanim i željeznim dobom, a vjeruje se da potječu iz okolice gradine Kopacine.¹⁵ Osim metala, život u ovim razdobljima ovjeren je brojnim keramičkim ulomcima, kostima, fortifikacijskom arhitekturom, gomilama i drugim.¹⁶

Prekretnica u povijesnom razvoju Visa bilo je trajno naseljavanje grčkog stanovništva tijekom 4. st. pr. Kr. Neki su autori taj čin skloni datirati na temelju pisanih izvora (Diod. XV, 13, 4; 14, 1–3) za vladavine sirakuškog tiranina Dionizija Starijeg, odnosno prije 385./384. g. pr. Kr., dok se drugi opredjeljuju za kasniji datum zbog izostanka ranijih arheoloških ovjera.¹⁷ Sirakužani su na Visu utemeljili nasebinu i nadjenuli joj ime *Issa* (Ps. Scym. 412–414). Taj je polis ostavio dubok civilizacijski pečat tijekom antičkoga perioda, prvotno kroz grčku, a zatim rim-

Vis has so far been recovered in an intact layer, but sherds from Mramorcina Cave are associated with that period.¹¹

Bronze Age finds have been recorded from Tvarda Špila, while trial excavations at Prirovo uncovered remains of a dwelling floor and a small quantity of pottery, radiocarbon-dated to between the 15th and 14th centuries BC.¹² However, it should be noted that the scholarly community has criticised these results due to their lack of more extensive supporting documentation and illustrative material.¹³ An important find is a one-piece bow fibula with two thickenings on the bow, belonging to the Liburnian cultural circle and dated to the second half of the 11th century BC.¹⁴ Several bronze objects can be stylistically linked to the Late Bronze and Iron Ages and are thought to have originated from the area of the hillfort at Kopacine.¹⁵ In addition to metal finds, life in these periods is attested by numerous pottery sherds, bones, fortification architecture, cairns and other remains.¹⁶

A turning point in the historical development of Vis was its permanent settlement by Greek colonists during the 4th century BC. Some authors are inclined to date this event, on the basis of written sources (Diod. XV, 13, 4; 14, 1–3), to the reign of the Syracusan tyrant Dionysius the Elder, i.e. before 385/384 BC; others incline towards a later date given the absence of earlier archaeological confirmation.¹⁷ The Syra-

¹¹ ČARGO 2021b: 24.

¹² KATIĆ 2009: 54–55. Podatak prenosi i ČARGO 2021b: 24.

¹³ KIRIGIN *et al.* 2024: 83, bilj. 13.

¹⁴ ČARGO 2021b: 27.

¹⁵ Iako se u literaturi često upotrebljava naziv gradina Talež, u lokalnoj se toponimiji cijeli prostor naziva Talež, zajedno s istoimenim selom u blizini. Sam vrh brda (Taleška glavica) i njegovo sjeverno podnožje, gdje je mala zaravan, nazivaju se Kopacine. Stoga smatramo da je u ovom slučaju potrebno slijediti lokalnu toponimiju te gradinu nazivati Kopacine (na Taležu), na isti način kao što se i Vela gomila smješta na Talež. O arheološkom materijalu *Ibid.*: 24–25.

¹⁶ BUŠKARIOL 1982; PROTIĆ 1985; KIRIGIN *et al.* 2006; ČARGO 2021b.

¹⁷ Historiografski pregled različitih interpretacija osnutka Ise vidjeti sažeto u BUDIĆ 2018: 100–102, bilj. 3.

¹¹ ČARGO 2021b: 24.

¹² KATIĆ 2009: 54–55. This information is also reported in ČARGO 2021b: 24.

¹³ KIRIGIN *et al.* 2024, 83, n. 13.

¹⁴ ČARGO 2021b: 27.

¹⁵ Although the term “Talež Hillfort” is often used in the literature, in local toponymy the entire area is called Talež, together with the nearby village of the same name. The very top of the hill (Taleška Glavica) and its northern foot, where there is a small plateau, are referred to as Kopacine. We therefore consider it necessary in this case to follow the local toponymy and to designate the hillfort as Kopacine (on Talež), in the same way that Vela Gomila is located on Talež. For the archaeological material see *Ibid.*: 24–25.

¹⁶ BUŠKARIOL 1982; PROTIĆ 1985; KIRIGIN *et al.* 2006; ČARGO 2021b.

¹⁷ For a historiographical overview of different interpretations of the foundation of Issa, see the summary in BUDIĆ 2018: 100–102, n. 3.



KARTA 1. Karta otoka Visa s označenim gradinama i gomilama. Izradio: I. Čevid. (1: gradina Grodac, 2: gradina Sveti Duh, 3: gradina Sveti Vid, 4: Issa, 5: Prilovo, 6: Štracine, 7: Bratošovac, 8: gradina Kopacine, 9: Vela gomila, 10: Mažurona, 11: Podstrožje, 12: Terjun, 13: Lorca, 14: Markinovo bardo, 15: Sveti Andrija, 16: gomile na Krušovici, 17: gradina Gracišće)

MAP 1 Map of the island of Vis with marked hillforts and cairns. Made by: I. Čevid. (1: Grodac hillfort, 2: Sveti Duh hillfort, 3: Sveti Vid hillfort, 4: Issa, 5: Prilovo, 6: Štracine, 7: Bratošovac, 8: Kopacine hillfort, 9: Vela Gomila, 10: Mažurona, 11: Podstrožje, 12: Terjun, 13: Lorca, 14: Markinovo Bardo, 15: Sveti Andrija, 16: cairns at Krušovice, 17: Gracišće hillfort)

sku sferu utjecaja. Prije i neposredno nakon osnutka grčkog polisa na otoku su egzistirala i urođenička gradinska naselja. Nalazila su se na strateškim položajima s kojih su urođenici mogli nadzirati plovidbene putove i obližnja plodna polja.¹⁸ Na Visu je do sad zabilježeno pet takvih, uz uzgredni spomen dvaju lokaliteta definiranih kao potencijalne gradine.¹⁹ Najistaknutiji primjer urođeničkih gradina jest lokalitet Kopacine na Taležu kod Podšpilja na južnoj strani otoka Visa.²⁰ Među ostale gradinske lokalitete ubrajaju se i pozicije Sveti Duh, Sveti Vid, Grodac (Gradac) i Štracine (karta 1).²¹

cusans founded a settlement on Vis and named it *Issa* (Ps. Scym. 412–414). This polis left a profound civilisational imprint during antiquity, initially within the Greek, and subsequently within the Roman sphere of influence. Before and immediately after the establishment of the Greek *polis*, indigenous hillfort settlements also existed on the island. They were situated in strategic positions from which the indigenous population could control maritime routes and the nearby fertile plains.¹⁸ So far, five such sites have been recorded on Vis, with a further two mentioned in passing as potential hillforts.¹⁹ The most prominent example of the indigenous hillforts is the site of Kopacine on Talež near Podšpilje, on the island's southern side.²⁰ Other hillfort sites include Sveti Duh, Sveti Vid, Grodac (Gradac) and Štracine (Map 1).²¹

¹⁸ Usp. LOŽNJAK DIZDAR, POTREBICA 2017: 113.

¹⁹ ČARGO 2021b: 25.

²⁰ KIRIGIN *et al.* 2006: 50 sa starijom bibliografijom; ČARGO 2021b: 25.

²¹ ČARGO 2021b: 25–26.

¹⁸ Cf. LOŽNJAK DIZDAR, POTREBICA 2017: 113.

¹⁹ ČARGO 2021b: 25.

²⁰ KIRIGIN *et al.* 2006: 50 with the earlier bibliography; ČARGO 2021b: 25.

²¹ ČARGO 2021b: 25–26.

CILJEVI I METODOLOGIJA

Projekt „*Na ilirski nasrnu brod*”: *Rekognosciranje prapovijesnog krajolika na južnim padinama otoka Visa* proveden je 2022. Njegov je cilj bio terenski pregled te mapiranje prapovijesnih struktura i komunikacijskih točaka na Visu. Projekt *ΠΛΕΙΝ ΑΝΑΓΚΗ: Terenski pregled prapovijesnog krajolika gradinskih lokaliteta Grodac i Štracine na otoku Visu* proveden je 2024. s naumom utvrđivanja arheološkog stanja, pobližeg datiranja te reambulacije starih tlocrta odabranih pozicija.

Ustaljena metodologija sustavnoga terenskog pregleda nije primjenjiva na većini dalmatinskih lokaliteta, pa tako ni na otoku Visu. Zbog nestanka poljoprivrede, ali i depopulacije, većina nekad poljoprivrednih površina danas je gotovo potpuno neprohodna, što znatno otežava terenski pregled. Metodologija terenskog pregleda prilagođavala se prirodnim uvjetima, dakle u skladu s geomorfološkom situacijom i prohodnošću.

Pri terenskom pregledu uglavnom je kombinirana pješačka tehnika uz aeroarheološke metode, tj. snimanje iz zraka s pomoću drona. Također su usporedno pregledane satelitske snimke te stare karte.²² Pješačilo se uglavnom po suhozidima, gomilama i rijetkim čistinama. Većim koncentracijama materijala uzimane su GPS točke, a prikupljan je samo dijagnostički materijal te nekoliko specifičnih uzoraka koji predstavljaju tip nalaza na pojedinom lokalitetu. Površine koje nisu mogle biti pregledane sa zemlje snimane su dronom. Sama pješačka tehnika terenskog pregleda ne može dati stvaran odraz stanja na lokalitetu, no uz prikupljeni

²² Korištene su karte druge (*Dalmatia (1851–1854) – Second military survey of the Habsburg Empire*) i treće vojne izmjere (*Habsburg Empire (1869–1887) – The Third Military Survey*) i karte habsburškog katastra (*Habsburg Empire – Cadastral maps (XIXth century)*). Kartama je pristupljeno preko <https://maps.arcanum.com/en/>. Konzultirane su i satelitske snimke Državne geodetske uprave, kojima je pristupljeno preko <https://geoport.dgu.hr/>.

AIMS AND METHODOLOGY

The project “*Na ilirski nasrnu brod*”: *Reconnaissance of the prehistoric landscape on the southern slopes of the island of Vis* was carried out in 2022. Its aim was a field survey and the mapping of prehistoric structures and points of communication on the island. *ΠΛΕΙΝ ΑΝΑΓΚΗ: Field survey of the prehistoric landscape of the hillfort sites of Grodac and Štracine on the island of Vis* was conducted in 2024 with the intention of establishing the archaeological condition, refining the dating, and reambulating the old plans of selected sites.

The standard methodology of systematic field survey is not applicable to most Dalmatian sites, including those on Vis. Due to the abandonment of agriculture, as well as depopulation, most formerly cultivated areas are today almost completely impassable, which makes field surveying considerably more difficult. The survey methodology was adapted to natural conditions, that is, in accordance with the geomorphological situation and accessibility.

During the field survey, pedestrian techniques were generally combined with aerial-archaeological methods, i.e. drone photography. Satellite images and old maps were also examined in parallel.²² Walking mainly took place along dry-stone walls, on cairns and in the few open clearings. Where larger concentrations of material were observed, GPS points were taken, and only diagnostic material was collected, together with a few specific samples representative of the type of finds at individual sites. Areas that could not be surveyed from the ground were recorded with a drone. The pedestrian survey technique cannot alone provide a true reflection of the state of a site; however, combined in this case

²² The maps used were those of the Second and the Third Military Survey of the Habsburg Empire (Dalmatia 1851–1854, 1869–1887, respectively), and the Habsburg Empire Cadastral maps (19th century). The maps were accessed via <https://maps.arcanum.com/en/>. Satellite images of the State Geodetic Administration were also consulted, accessed via <https://geoport.dgu.hr/>.

materijal, zračne i satelitske snimke te stare karte otvorila se mogućnost donošenja konkretnijih zaključaka.

GRADAC (GRODAC)

Na sjevernoj strani otoka Visa nalazi se poluotok s kotom od oko 100 m na kojem je smješten lokalitet Gradac (na viškom dijalektu Grodac). Njegovo se ime može dovesti u lingvističku vezu s terminom gradina.²³ Položaj upravlja omanjom uvalom koja se naziva Grodac ili Grodačka vala, a nalazi se jugozapadno od poluotoka i nudi dobru zaštitu od bure i juga, a izložena je samo maestralu.²⁴ Šljunčana je plaža povoljna za izvlačenje brodova na obalu. Na sjevernoj strani uvale postojao je izvor pitke vode koji se za vrijeme većih oseka mogao vidjeti početkom 80-ih godina 20. stoljeća.²⁵ Zbog niže razine mora bio je funkcionalan tijekom željeznog doba.²⁶ Sa zaravni na vrhu brda pruža se pogled prema dominantnim pomorskim orijentirima srednje Dalmacije: Jabuci, rtu Ploča, Šolti, Hvaru te Split-skim vratima.²⁷

Poluotok je brežuljak s vrlo strmim nagibom na sjeveru, sjeverozapadu, jugu i jugoistoku. Tri najjednostavnija puta do vrha gradine protežu se izravno s istoka, preko udoline koja se nadovezuje na uvalu ili preko hridi uz more na zapadnim padinama brežuljka. S obzirom na to da su prva dva puta kao i velik dio površine gradinskog uzvišenja danas potpuno neprohodni zbog guste makije, terenskom se pregledu pristupilo sa zapada. Pregled ostalog prostora izvršen je praćenjem

²³ BUŠKARIOL 1982: 29.

²⁴ *Ibid.*: 30.

²⁵ *Ibid.*: 31.

²⁶ KATIĆ 2009: 48.

²⁷ Usp. KIRIGIN *et al.* 2006: 41. Frane BUŠKARIOL (1982: 31) tvrdi da se tijekom lijepog vremena može vidjeti pučina od Kornata do Biokova, a naglašava i otočnu vizualnu komunikaciju s istaknutim viškim uvalama Zvirin dolac, Oključna, Slatina i Tiha, gradinom Sveti Duh te uzvišenjima Bunikovac, Lovac i Bardarovica.

with the collected material, aerial and satellite images and old maps, it opened the possibility of drawing more concrete conclusions.

GRADAC (GRODAC)

On the northern side of the island of Vis lies a peninsula with an elevation of about 100 m, where the site of Gradac (in the Vis dialect Grodac) is situated. Its name can be linked linguistically to the term *gradina* (hillfort, enclosure).²³ The position overlooks a small bay called Grodac or Grodačka Vala, lying to the south-west of the peninsula, which provides good shelter from the Bora and Jugo winds, being exposed only to the Maestral.²⁴ The pebble beach is suitable for hauling boats ashore. On the northern side of the bay there was once a freshwater spring, visible at low tide in the early 1980s.²⁵ It was functional during the Iron Age, due to the then lower sea level.²⁶ From the plateau on the hilltop, the main maritime landmarks of central Dalmatia are visible: Jabuka, Cape Ploča, Šolta, Hvar and the Split Channel (Splitska Vrata).²⁷

The peninsula is a hill with very steep slopes to the north, north-west, south and south-east. The three simplest paths to the top of the hillfort lead directly from the east, via the valley that runs down to the bay, or via the rocks along the sea on the western slopes of the hill. Since the first two, as well as much of the hillfort elevation, are today completely impassable due to dense maquis, the field survey approached the site from the west. The rest of the area was examined by following clearings on the slopes and the plateau at the summit. As Grodac has

²³ BUŠKARIOL 1982: 29.

²⁴ *Ibid.*: 30.

²⁵ *Ibid.*: 31.

²⁶ KATIĆ 2009: 48.

²⁷ Cf. KIRIGIN *et al.* 2006: 41. Frane BUŠKARIOL (1982: 31) stated that in fine weather the open sea from the Kornati archipelago to Biokovo can be seen, and he also emphasized the island's visual communication with the prominent Vis bays of Zvirin Dolac, Oključna, Slatina and Tiha, the hillfort of Sveti Duh, and the elevations of Bunikovac, Lovac and Bardarovica.

čistina na padinama i vrhu zaravni. Budući da je Grodac u literaturi višekratno spomenut kao gradina,²⁸ cilj terenskog pregleda bio je reambulacija starih tlocrta koji se znatno razlikuju, utvrđivanje stanja na terenu, kao i detekcija arheološkog materijala na površini u svrhu približega kronološkog određenja lokaliteta.

Arhitektura

Frane Buškariol ubrojio je Grodac u gradine s diskontinuitetom, jer se fortifikacije na više mjesta nadovezuju na nepristupačne strmine.²⁹ Tragove zidina i bokobrana na istoku, zapadu i sjeverozapadu gradine opisao je i Miro Katić, istaknuvši prosječne dimenzije grubo obrađenih blokova (0,6 × 0,8 × 0,4 m) (sl. 1). Najveći zid utvrdio je na sjeverozapadnoj padini, gdje je očuvan u duljini od tridesetak metara.³⁰ Tijekom rekognosciranja 2024. zapažen je zid od velikih kamenih blokova uz morski dio sa zapadne strane, označen kao broj 4 (sl. 3). Kamenje od kojeg je načinjen veće je od drugog primijećenog te korespondira sa završetkom klisura prema moru na južnoj strani gradine. Uz dozu opreza ova bi se formacija mogla tumačiti kao ostatak obrambenog zida s prirodno nezaštićene morske strane (sl. 2). Nekoć ucrtani bedem na jugozapadnoj strani nije uočen³¹ niti ima tragova njegova urušenja. Teren se ondje oštro spušta prema moru.

Na gradinskoj zaravni također ima ostataka arhitekture. Sačuvana je u nekoliko redova naslaganog kamena bez upotrebe vezivnog materijala. Arhitektura označena brojem 2 (sl. 3) ima dva očuvana zida koji se spajaju u pravom kutu, dok ostaci označeni brojem

repeatedly been mentioned in the literature as a hillfort,²⁸ the aim of the field survey was the reambulation of earlier plans (which differ considerably), an assessment of current ground conditions, and the detection of surface archaeological material for the purpose of a more precise chronological determination of the site.

Architecture

Frane Buškariol classified Grodac as a discontinuous hillfort, since the fortifications in several places adjoin impassable slopes.²⁹ Traces of walls and ramparts on the east, west and north-west sides of the hillfort were also described by Miro Katić, who noted the average dimensions of the roughly worked blocks (0.6 × 0.8 × 0.4 m) (Fig. 1). The largest wall he recorded was on the north-western slope, where a length of about thirty metres was preserved.³⁰ During the 2024 prospecting, a wall of large stone blocks was observed by the sea on the western side, marked as number 4 (Fig. 3). The stones from which it was built are larger than those noted elsewhere and correspond to the point where the cliffs descend towards the sea on the southern side of the hillfort. This formation could tentatively be interpreted as the remains of a defensive wall on the naturally unprotected seaward side (Fig. 2). A rampart once mapped on the south-western side was not observed,³¹ nor were there traces of its collapse. In that area the terrain drops steeply towards the sea.

On the hillfort plateau there are also architectural remains. These are preserved in several courses of stacked stone laid without binding material. The structure marked as number 2 (Fig. 3) has two preserved walls meeting at a right angle, while the remains marked as num-

²⁸ BURTON 1879: 167; BUŠKARIOL 1982: 29–31, T. II; FORENBAHER *et al.* 1994: 32–35; KIRIGIN 1999: 415; KIRIGIN *et al.* 2006: 41; KATIĆ 2009: 48; ČARGO 2021b: 25. BUŠKARIOL (1982: 29) ističe da je prvi temeljito ispitaov ovaj lokalitet.

²⁹ BUŠKARIOL 1982: 30.

³⁰ KATIĆ 2009: 49–50.

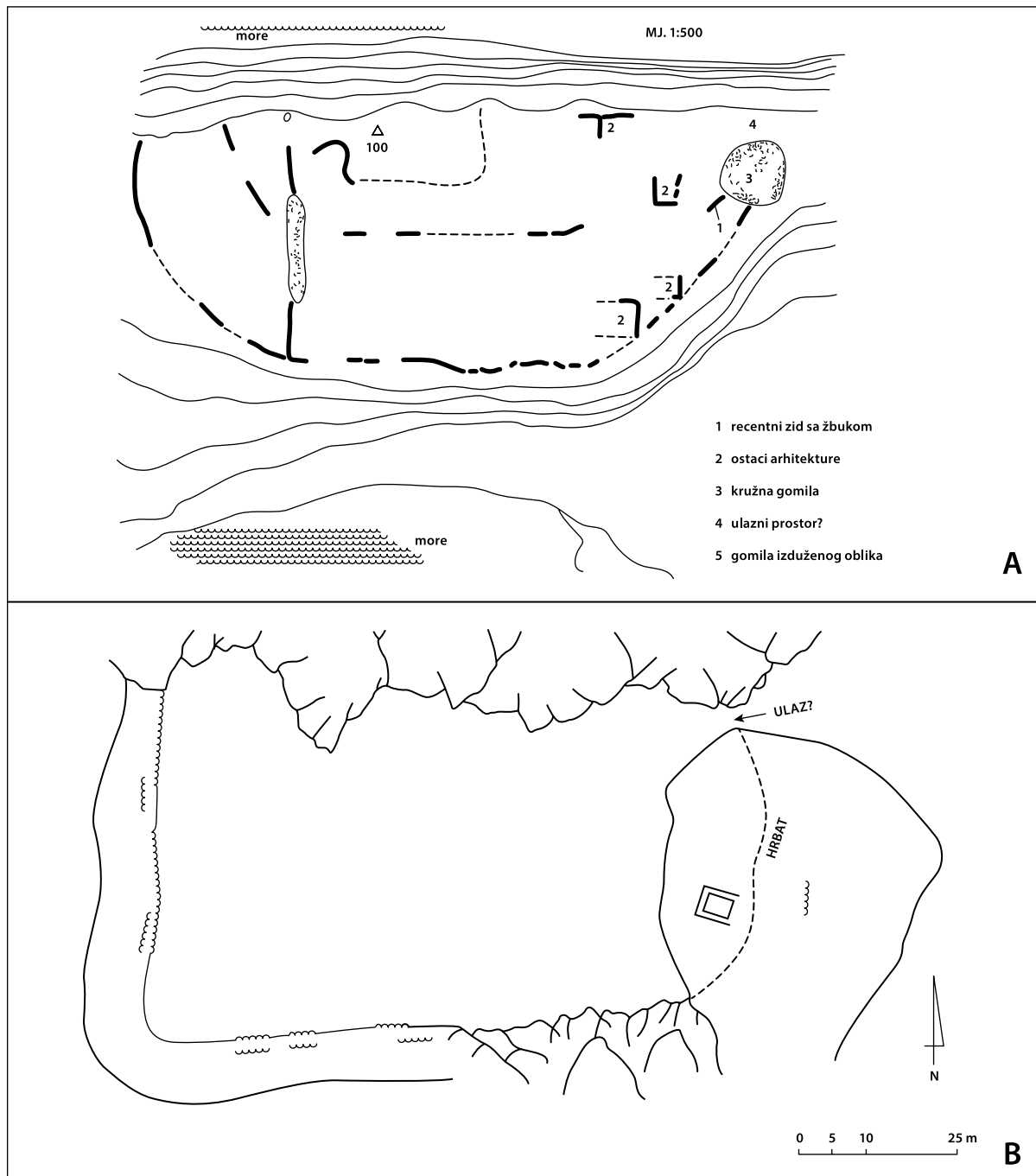
³¹ Usp. BUŠKARIOL 1982: 31, T. II.

²⁸ BURTON 1879: 167; BUŠKARIOL 1982: 29–31, T. II; FORENBAHER *et al.* 1994: 32–35; KIRIGIN 1999: 415; KIRIGIN *et al.* 2006: 41; KATIĆ 2009: 48; ČARGO 2021b: 25. BUŠKARIOL (1982: 29) emphasised that he was the first to examine this site thoroughly.

²⁹ BUŠKARIOL 1982: 30.

³⁰ KATIĆ 2009: 49–50.

³¹ Cf. BUŠKARIOL 1982: 31, T. II.



SLIKA 1. Stariji tlocrti Grodca prema A) BUŠKARIOL 1982: T. II i B) KIRIGIN *et al.* 2006: 41

FIGURE 1 Older ground plans of Grodac according to A) BUŠKARIOL 1982: Pl. II and B) KIRIGIN *et al.* 2006: 41

3 (sl. 3) imaju samo jedan zid čija je okolina prekrivena kamenim urušenjem i makijom. Da bismo ostatke na ovom lokalitetu mogli odrediti isključivo kao prapovijesne pomažu nam keramički nalazi, ali i činjenica da prostor nije korišten u vinogradarske svrhe niti je u međuvremenu terasiran. Ovdje nema tragova pristava, za razliku od gradine Sveti Vid u Dracevom Polju. Grodac je korišten is-

ber 3 (Fig. 3) consist of only one wall, the surrounding area being covered with collapsed stone and maquis. That these remains can be identified exclusively as prehistoric is supported by the pottery finds, as well as the fact that, not having been used for viticulture, the area has not been terraced in the meantime. There are no traces of outbuildings here, unlike at the hillfort of Sveti Vid in Dracevo Polje. Grodac



SLIKA 2. Potencijalni ostaci zidina uz more (broj 4 / sl. 3) (snimila: P. Grizelj)

FIGURE 2 Potential remains of fortification walls by the sea (No. 4 / Fig. 3) (photo by P. Grizelj)

ključivo kao pašnjak i iskorištavan kao šumski resurs, o čemu svjedoči i prva habsburška katastarska mapa.³² Za Drugog svjetskog rata uvala je bila minirana i ograđena, no gradinsko područje ostalo je netaknuto.³³

Na istočnoj strani gradinske zaravni uočeno je pružanje rasutog bedema u smjeru sjever – jug (linija pružanja označena je crnom bojom na slici 3). Krajnja južna točka proteže se do litica koje zatim tvore prirodnu zaštitu uzduž južnog dijela gradine. Na sjevernom rubu bedem završava paralelnim zidom podno kojeg je uski plato širine 3 m. Budući da je zaravan sa sjeverne strane okružena liticama, ovdje je mogao biti glavni ulaz (sl. 4).³⁴ Nema sumnje

was used solely as pastureland and exploited as a woodland resource, as attested by the first Habsburg Cadastral Map.³² During the Second World War the bay was mined and fenced, but the hillfort area itself remained untouched.³³

On the eastern side of the hillfort plateau a stretch of a dispersed rampart running north–south was observed (its course is marked in black in Fig. 3). The southern end extends to the cliffs, which then provide natural protection along the southern part of the hillfort. At the northern edge the rampart terminates in a parallel wall, below which lies a narrow terrace 3 m wide. Since the plateau is surrounded by cliffs on the northern side, the main entrance may have been located here (Fig. 4).³⁴ There is no doubt that the ram-

³² <https://maps.arcanum.com/en/map/cadastral/?layers=3%2C4&bbox=1786123.4083712243%2C5316313.978152645%2C1815150.36986252%2C5326881.3973130705> (pristupljeno 13. siječnja 2024.).

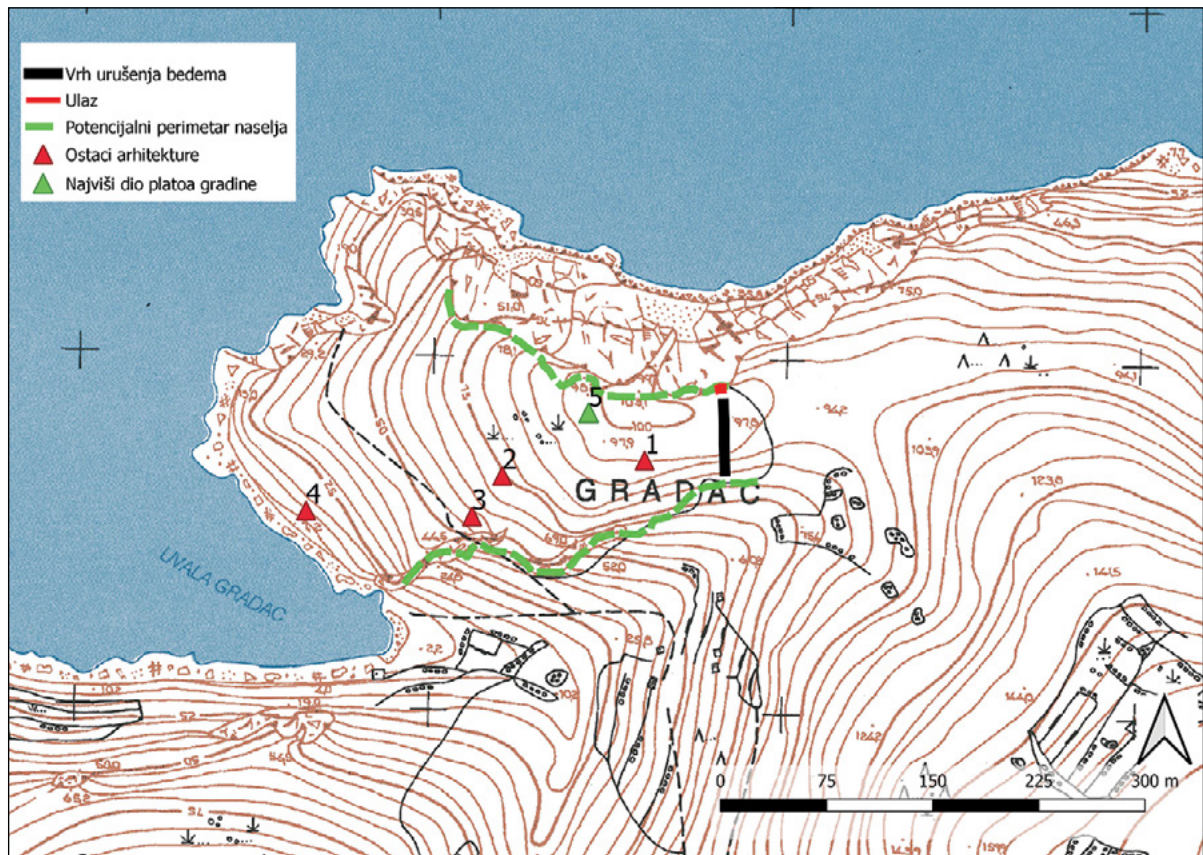
³³ Usmena informacija pok. Vicko Zorotović (1934. – 2025.).

³⁴ Usp. crtež u KIRIGIN *et al.* 2006: 41. Nije detektirana kružna gomila koju je ucrtao i opisao BUŠKARIOL (1982: 31, T. II.). K tome je autor predložio da možda nije riječ o gomili, već o nasipu koji je markirao ulaz u gradinu.

³² <https://maps.arcanum.com/en/map/cadastral/?layers=3%2C4&bbox=1786123.4083712243%2C5316313.978152645%2C1815150.36986252%2C5326881.3973130705>, accessed 13.01.2024.

³³ Oral information from the late Vicko Zorotović (1934–2025).

³⁴ Cf. drawing in KIRIGIN *et al.* 2006: 41. The circular cairn mapped and described by BUŠKARIOL (1982: 31, Pl.



SLIKA 3. Gradac, položaj točaka u prostoru (izvor: QGIS, obrada: I. Čevič)

FIGURE 3 Gradac, distribution of survey points (source: QGIS, processing by I. Čevič)



SLIKA 4. Gradac iz zraka s istaknutom arhitekturom (snimio: F. Budić, obrada: I. Čevič)

FIGURE 4 Gradac from the air with highlighted architecture (photo by F. Budić, processing by I. Čevič)

da je bedem na istočnoj strani bio najvažnija obrambena potreba gradine, jer je to jedini nezaštićeni dio poluotoka koji je omogućavao pristup s kopnene strane. Zbog zaraštenosti, ostaci bedema danas iz zraka nalikuju trima linijama razasutog kamenja.

Keramika

U Buškariolovu istraživanju keramički nalazi s Grodca navedeni su kao atipični, a ulomci su pohranjeni u Arheološkom muzeju u Splitu.³⁵ U kasnijim radovima materijal je uzgredno spomenut i opisan kao prapovijesni, helenistički i rimski, ali bez preciznijega tipološkog određenja.³⁶ Miro Katić najviše je lončarije primijetio na jugozapadnom dijelu gradine, koji je definirao kao podgrađe. Ondje dominira prapovijesna keramika s obilatom anorganskim primjesama, posebice kalcitom i grogom, dok se od ukrasa ističe traka s ubodima koja se može usporediti s primjercima prikupljenima na Taležu i u gradu Hvaru. Osim toga, Miro Katić izdvojio je i grčku keramiku – finije crno premazano posuđe, dna pitosa, ručke amfora i svakodnevno posuđe.³⁷ Terenskim pregledom 2024. najveća je količina keramike zbog erozije terena također prepoznata na zapadnim i jugozapadnim obroncima. Prapovijesna je keramika pronađena u sitnim fragmentima te je zbog utjecaja prirodnih procesa vrlo abradirana. Za brojne ulomke nije bilo moguće utvrditi tipologiju, cjelovitu rekonstrukciju oblika ni precizniju kronologiju. Većina keramike koja se mogla rekonstruirati pripada svakodnevnoj kuhinjskoj lončariji, uglavnom loncima. Grube je fakture, puna primjesa koje su vidljive golim okom, a boja je fragmenata neujednačena. Prevladavaju crvene, narančaste i smeđe nijanse, što upućuje na neujednačeno pečenje.³⁸

³⁵ BUŠKARIOL 1982: 30–31.

³⁶ KIRIGIN *et al.* 2006: 41; ČARGO 2021: 25.

³⁷ KATIĆ 2009: 50.

³⁸ ŠEŠELJ, VUKOVIĆ 2013: 339; ČONDIĆ, VUKOVIĆ 2017: 51.

part on the eastern side was the most important defensive element of the hillfort, as this is the only unprotected part of the peninsula, allowing access from the landward side. Due to overgrowth, the remains of the rampart today appear from the air as three lines of scattered stones.

Pottery

In Buškariol's study, the pottery finds from Grodac were described as atypical; the sherds are housed in the Archaeological Museum in Split.³⁵ In later works the material was mentioned in passing and described as prehistoric, Hellenistic and Roman, but without more precise typological definition.³⁶ Miro Katić noted the greatest quantity of pottery on the south-western part of the hillfort, which he defined as the *suburbium*. There, prehistoric pottery predominates, with abundant organic temper, especially calcite and grog, while decoration is represented above all by a band with impressions, comparable to specimens collected at Talež and in the town of Hvar. In addition, Miro Katić identified Greek pottery – finer black-glazed ware, pithos bases, amphora handles and everyday vessels.³⁷ During the 2024 field survey, the largest quantity of pottery, likewise due to erosion, was again recorded on the western and south-western slopes. The prehistoric pottery was found in small fragments and, due to natural processes, is very abraded. For numerous sherds it was not possible to establish typology, reconstruct complete forms or determine a more precise chronology. Most of the pottery that could be reconstructed belongs to everyday kitchenware, mainly cooking pots. It is coarse in fabric, with abundant inclusions visible to the naked eye, and the colour of the fragments is

II) was not detected. Moreover, the author suggested that it may not in fact have been a cairn, but rather an embankment marking the entrance to the hillfort.

³⁵ BUŠKARIOL 1982: 30–31.

³⁶ KIRIGIN *et al.* 2006: 41; ČARGO 2021: 25.

³⁷ KATIĆ 2009: 50.

Ulomke je na temelju teksture i primjesa moguće smjestiti u vrijeme od sredine brončanog do konca željeznog doba.³⁹ Blago izvučeni zaobljeni obod koji je zadebljan pri prijelazu na vrat (T. I/1) pripada loncu zatvorenijeg tipa čije su analogije pronađene na Ratu⁴⁰ i datirane u kasno brončano ili starije željezno doba. Sličan primjerak koji potječe s gradine Kuran na otoku Ugljanu Batović svrstava u željeznodobnu liburnsku keramiku.⁴¹ Drugi je obod blago izvučen i zaravnjen (T. I/2) te pripada loncu. Sličan je primjerak pronađen na Štracinama (T. II/1), u znatno boljem stanju, ali je ukrašen. Podudarne željeznodobne analogije poznate su iz Škripa na Braču,⁴² Vaganačke pećine⁴³ te gradine Sutilije, no posljednji je datiran u brončano doba.⁴⁴

Ističe se i ručka srcolikog ili kružnog presjeka (T. I/4) s uzdužnim udubljenjem po sredini vanjske strane. Ovaj je tip ručke karakterističan za starije željezno doba,⁴⁵ a analogni su primjeri pronađeni na Beretinovoj glavici kod Radovina⁴⁶ i Bribiru.⁴⁷ Pronađeno je nekoliko ulomaka jezičastih drški (T. I/3), no treba istaknuti jedan primjerak koji se izdvaja veličinom. Zbog dimenzija najvjerojatnije je pripadao velikoj posudi za skladištenje.

Među prikupljenim materijalom ističe se i antički, pri čemu nekoliko ulomaka crnopr-mazane helenističke keramike (T. III/3–5), kao i dio oboda pitosa čija bi izrada mogla pripadati grčkoj produkciji Ise (T. III/6).⁴⁸ Ulomak amfore sa žljebovima (T. III/7), jedan potencijalni poklopac (T. III/8) te ulomci oboda, ručkica i dna posuda mogu se

uneven. Red, orange and brown shades predominate, indicating irregular firing.³⁸ On the basis of texture and inclusions, the sherds can be dated to between the Middle Bronze Age and the end of the Iron Age.³⁹ A slightly everted rounded rim, thickened at the transition to the neck (Pl. I/1), belongs to a more closed pot type, with analogies found at Rat⁴⁰ and dated to the Late Bronze or Early Iron Age. A similar specimen comes from the hillfort of Kuran on the island of Ugljan, which Batović classified as Liburnian Iron Age pottery.⁴¹ Another rim is slightly everted and flattened (Pl. I/2) and belongs to a pot. A similar specimen, but decorated, was found at Štracine (Pl. II/1), in much better condition. Comparable Iron Age analogies are known from Škrip on Brač,⁴² Vaganačka Pećina⁴³ and the hillfort of Sutilija, although the latter is dated to the Bronze Age.⁴⁴

Also noteworthy is a handle of heart-shaped or circular cross-section (Pl. I/4) with a longitudinal groove down the centre of the outer side. This type of handle is characteristic of the Early Iron Age,⁴⁵ with analogous examples found at Beretina Glavica near Radovin⁴⁶ and at Bribir.⁴⁷ Several fragments of tongue-shaped handles (Pl. I/3) were found, but one specimen stands out because of its size. Given its dimensions, it most likely belonged to a large storage vessel.

Among the collected material, ancient finds are prominent, including several sherds of Hellenistic black-glazed pottery (Pl. III/3–5), as well as part of a pithos rim that may have been produced in Greek Issa (Pl. III/6).⁴⁸ An amphora fragment with grooves (Pl. III/7), a possible lid (Pl. III/8),

³⁹ Zaključak utemeljen na uvidu u materijal koji je učinila Asja Tonc.

⁴⁰ BARBARIĆ 2011: T. XI/79.

⁴¹ BATOVIĆ 1973: T. XCV/2.

⁴² FABER, NIKOLANCI 1985: T. I/11.

⁴³ FORENBAHER, VRANJICAN 1985: T. XI/8.

⁴⁴ PARAMAN, UGARKOVIĆ 2021: T. II/32.

⁴⁵ VUKOVIĆ 2014: T. III/1.

⁴⁶ *Ibid.*

⁴⁷ BATOVIĆ 1973: T. LXXVII/2.

⁴⁸ Zahvaljujemo Borisu Čargu, koji je ukazao na usporedne primjerke.

³⁸ ŠEŠELJ, VUKOVIĆ 2013: 339; ČONDIĆ, VUKOVIĆ 2017: 51.

³⁹ Conclusion based on the examination of the material carried out by Asja Tonc.

⁴⁰ BARBARIĆ 2011: Pl. XI/79.

⁴¹ BATOVIĆ 1973: Pl. XCV/2.

⁴² FABER, NIKOLANCI 1985: Pl. I/11.

⁴³ FORENBAHER, VRANJICAN 1985: Pl. XI/8.

⁴⁴ PARAMAN, UGARKOVIĆ 2021: Pl. II/32.

⁴⁵ VUKOVIĆ 2014: Pl. III/1.

⁴⁶ *Ibid.*

⁴⁷ BATOVIĆ 1973: Pl. LXXVII/2.

⁴⁸ We are grateful to Boris Čargo for pointing out comparable examples.

s rezervom smjestiti u rimski period. Osim keramike, pronađena su dva metalna komada (brončani i željezni), ali njihovu dataciju nije moguće precizirati. Ostaci sličnoga pokretnog materijala primijećeni su i na najvišem dijelu zaravni koji gravitira istočnom dijelu gradine označenom brojem 5 (sl. 3). Bitno je istaknuti i ulomak slikane keramike na kojem se vide tri paralelne tamne linije (T. III/9), a mogao bi biti dio daunijske posude.⁴⁹ Na južnim obroncima prikupljeni su ulomci crnopremazane i maleni ulomak crvenofiguralne keramike (T. III/4). Na najvišem dijelu zaravni dominira lončarija lokalne predrimske izrade, koja vjerojatno pripada mlađem željeznom dobu.⁵⁰ Pronađen je i komad kalcita čije su primjese evidentne u keramici željeznodobnog Visa.

ŠTRACINE

Štracine, Stracine ili Stračine naziv je poluotoka i rta na sjeveroistočnom dijelu otoka Visa (karta 1; sl. 5). Nalazi se između uvala Dobre luke na zapadu i Vele Cavojnice na istoku. Kad se na poluotok dolazi s mora, pristupačna je jedino njegova južna i jugoistočna strana, jer na sjevernom, sjeverozapadnom i zapadnom dijelu dominiraju strme klisure koje tvore prirodnu zaštitu. Kopneni pristup s jugozapada, tj. staza iz Dobre luke i Vele Cavojnice danas je potpuno obrasla. Frane Buškariol terenskim je pregledom 80-ih godina prošlog stoljeća potvrdio ljudsku prisutnost na Štracinama, primijetivši pokretnu i nepokretnu arheološku baštinu.⁵¹ Kotu 111 definirao je kao gradinu, a njegov se zaključak kasnije učestalo reproducirao u literaturi.⁵² Bila je to

⁴⁹ Ulomak je zbog dimenzija teško tipološki odrediti. Zahvaljujemo Vedranu Barbariću i Asji Tonc, koji su dali tipološke smjernice.

⁵⁰ Zaključak utemeljen na uvidu u materijal koji su učinili Emil Podrug i Asja Tonc.

⁵¹ BUŠKARIOL 1982: 32-33.

⁵² KIRIGIN *et al.* 2006: 55; ČARGO 2021: 25.

and fragments of rims, small handles, and vessel bases can, with caution, be assigned to the Roman period. In addition to pottery, two metal objects (bronze and iron) were found, though their dating cannot be determined precisely. Remains of similar portable material were also noted at the highest part of the plateau, corresponding to the eastern section of the hillfort marked as number 5 (Fig. 3). Of particular importance is a painted sherd with three parallel dark lines (Pl. III/9), which may have belonged to a Daunian vessel.⁴⁹ On the southern slopes, fragments of black-glazed pottery and a small fragment of red-figure pottery were collected (Pl. III/4). At the highest part of the plateau, locally produced pre-Roman pottery predominates, most likely belonging to the Late Iron Age.⁵⁰ A piece of calcite was also found, the temper of which is also evident in Iron-Age Vis pottery.

ŠTRACINE

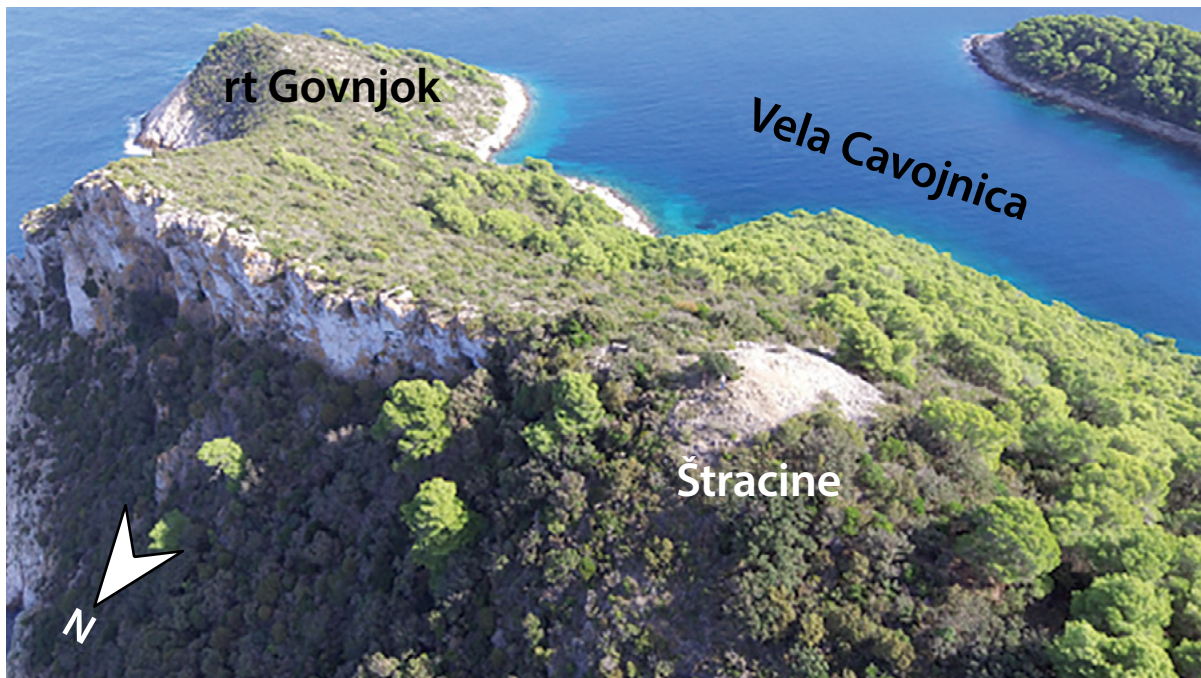
Štracine, Stracine or Stračine is the name of a peninsula and cape on the north-eastern part of the island of Vis (Map 1; Fig. 5). It lies between the bays of Dobra Luka to the west and Vela Cavojnica to the east. From the sea, only the peninsula's southern and south-eastern sides are accessible, as the northern, north-western and western parts are dominated by steep cliffs that provide natural protection. Overland access from the south-west, that is, the path from Dobra Luka and Vela Cavojnica, is today completely overgrown. In his field survey in the 1980s, Frane Buškariol confirmed human presence at Štracine, noting both movable and immovable archaeological heritage.⁵¹ He defined elevation 111 as a hillfort, and his conclusion was subsequently frequently reproduced in the literature.⁵²

⁴⁹ Because of its size, the sherd is difficult to classify typologically. We thank Vedran Barbarić and Asja Tonc for providing typological guidance.

⁵⁰ Conclusion based on the examination of the material carried out by Emil Podrug and Asja Tonc.

⁵¹ BUŠKARIOL 1982: 32-33.

⁵² KIRIGIN *et al.* 2006: 55; ČARGO 2021: 25.



SLIKA 5. Aerofotografija gomile na Štracinama (snimio: F. Budić, obradio: I. Čevič)

FIGURE 5 Aerial photograph of the tumulus at Štracine (photo by F. Budić, processing by I. Čevič)

polazišna točka za reambulaciju. Terenski je pregled 2024. obavljen s pomoću brodskog prijevoza, a zatim pješice preko stijena na jugoistočnom dijelu poluotoka kroz čistine prema koti 111.

Arhitektura

Frane Buškariol prvi je donio nacrt gradine prikazavši na jugozapadnom dijelu veliku gomilu iz koje se protežu dva paralelna reda zidina od poligonalnog kamenja u duljini od oko 150 m. Ulaz je smjestio između gomile i klisura na sjeverozapadu (sl. 6). Omeđen gradinski prostor skromne je veličine (160 × 65 m), a spominju se dvije razine s visinskom razlikom od oko 10 m. S obzirom na dimenzije, uvrstio je Štracine u manje odnosno srednje velike gradine frontalnog tipa. Brojni arhitektonski i fortifikacijski elementi koje je Buškariol naveo rekonstruirani su vrlo aproksimativno, a autor je kao razlog naveo snažnu eroziju.⁵³

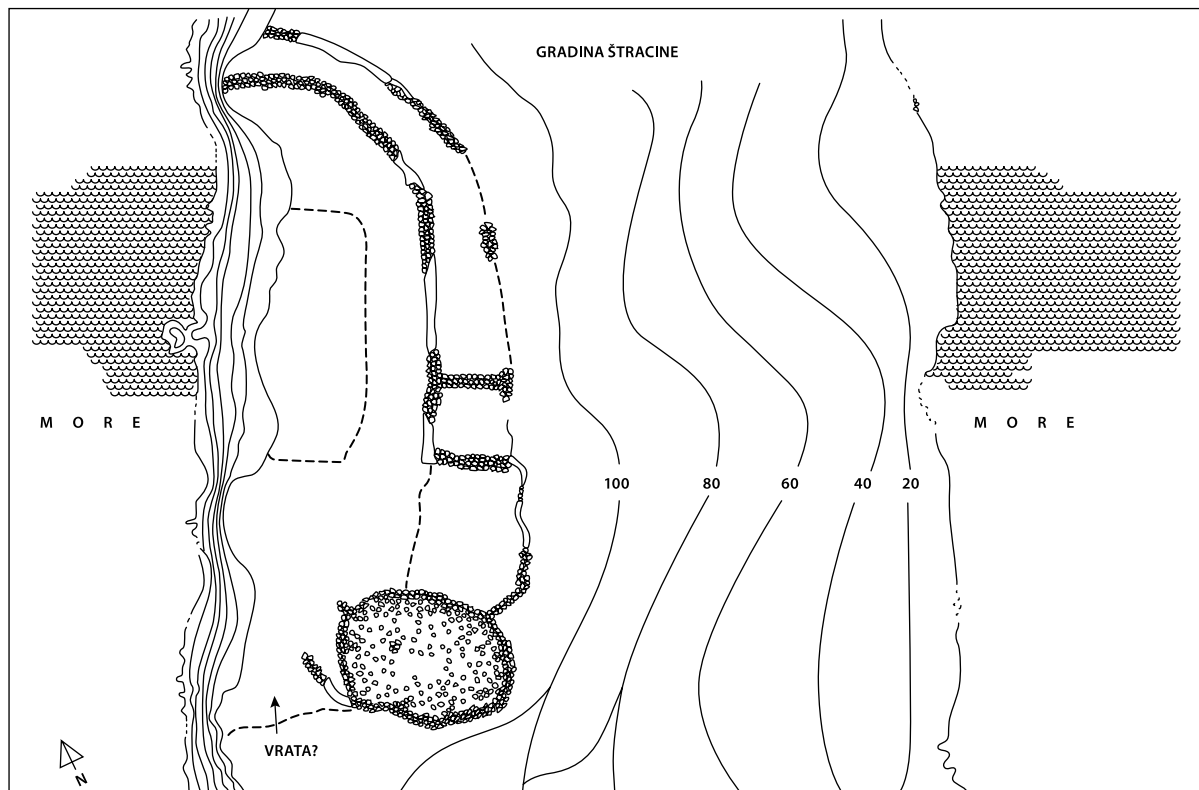
⁵³ BUŠKARIOL 1982: 32–33, T. VI.

This served as the starting point for the reambulation. The 2024 field survey was carried out first by boat transport, followed by a walk across the rocks on the south-eastern part of the peninsula, through clearings towards elevation 111.

Architecture

Frane Buškariol was the first to produce a plan of the hillfort, depicting on the south-western side a large mound from which two parallel rows of walls of polygonal stone extend for about 150 metres. He judged the entrance to have been between the cairn and the cliffs to the north-west (Fig. 6). The enclosed hillfort area is modest in size (160 × 65 m), and two level areas with a height difference of about 10 m are mentioned. Given its dimensions, he classified Štracine as a small to medium-sized hillfort of the frontal type. Numerous architectural and fortification elements noted by Buškariol were reconstructed only rather approximately, the author citing heavy erosion as the reason.⁵³

⁵³ BUŠKARIOL 1982: 32-33, Pl. VI.



SLIKA 6. Crtež Štracina prema BUŠKARIOL 1982: T. / VI

FIGURE 6 Drawing of Štracine according to BUŠKARIOL 1982: Pl. VI.

Danas je cijeli poluotok prekriven gustom makijom pa je terenski pregled bio znatno otežan. Jedini prostor koji se mogao pobliže promotriti bez čišćenja vegetacije bile su erodirane kote i teren oko gomile. Na gomili su primijećeni ostaci središnje grobne komore te oko nje četiri prstena kamenih blokova, jedan podno drugoga. Sjeverozapadni dio kamenog odrona gomile uzurpiralo je mitraljesko gnijezdo, vjerojatno podignuto tijekom Drugog svjetskog rata. Sjeveroistočno od gomile nalazi se i recentna pravokutna građevina načinjena suhozidnom tehnikom. Čisteći vegetaciju u smjeru sjeveroistoka, cilj je bio slijediti Buškariolov crtež i ovjeriti obrambenu arhitekturu na terenu, ali nisu uočeni fortifikacijski nizovi i monolitni blokovi koji bi, prema autoru, trebali formirati vanjsko lice bedema. Čini se pak da uočeno pripada prirodnim geološkim strukturama u kršu koje se pružaju u kontinuitetu od jugozapada prema sjeveroistoku, što je podudarno s općim protezanjem reljefa na

Today the entire peninsula is covered with dense maquis, which made the field survey considerably more difficult. The only areas that could be examined more closely without clearing vegetation were the eroded elevations and the terrain around the mound. At the mound, remains of a central burial chamber were observed, surrounded by four concentric rings of stone blocks, one beneath the other. The north-western part of the mound collapse was occupied by a machine-gun nest, probably constructed during the Second World War. North-east of this tumulus there is also a recent rectangular structure built using the dry-stone technique. In clearing vegetation to the north-east, the aim was to follow Buškariol's drawing and verify the defensive architecture in the field, but the fortification lines and monolithic blocks that, according to the author, should have formed the outer face of the rampart were not observed. It appears instead that what was mapped belongs to natural geological formations in the karst, which extend continuously

poluotoku. Zato nije bilo moguće ni pratiti oslanjanje pretpostavljenoga fortifikacijskog sustava na gomilu. Sve to, dakako, dovodi u pitanje definiranje kote 111 kao gradine, a razloga je još nekoliko.

Takozvani gradinski prostor toliko je malen, uzak i strm da bi teško pripadao tipu gradine na kojoj se trajno živjelo. Ovome u prilog ide i činjenica da je najbliže plodno polje, tj. Malo i Veliko Zlo poje, udaljeno od Štracina 1,5 km zračne udaljenosti. Usto, nema izvora pitke vode ni vidljivih ostataka kolektora za vodu.⁵⁴ Buškariol je naveo da šire područje Štracina nema ekonomsku privlačnost zbog teške pristupačnosti i izloženosti snažnim vjetrovima, istaknuvši da su se prije Drugog svjetskog rata ondje samo nabavljali drvo za ogrjev i ružmarin.⁵⁵ Također, prostor Štracina nikad nije terasiran u svrhu obrade zemljišta kao druga viška brda, već je osim za nabavu drva služio kao lokacija za ispašu stoke.⁵⁶ Dakle, kotom 111 na Štracinama zasigurno je dominirala velika gomila, no trajni boravišni prostor kako ga je nacrtao Buškariol nije logično očekivati. Možda bi se moglo razmišljati o povremenom motrištu, jer se s vrha poluotoka dobro vide ključne pomorske točke: ulaz u Višku luku, otočić Host, sjeverozapadni dio Visa, rt Ploča, Šolta, Hvar, Korčula s Kopilom, Lastovo i Splitska vrata.

Keramika

Zbog snažne erozije, na kotama poluotoka nije uočena prapovijesna keramika, ali jest na njegovim istočnim obroncima, podalje od gomile i uzvišenja. Nalikuje onoj s Grodca – obiluje primjesama kalcita, pljeve i groga, srednje je grube do grube fature s nekoliko priglačanih primjera. Ulomci su uglavnom nedijagnostički, uz iznimku ne-

⁵⁴ *Ibid.*: 33.

⁵⁵ *Ibid.*

⁵⁶ Usmeni podatak: Trifun Linčir, pok. Marko Poduje i Vicko Zorotović.

in a south-west to north-east direction, corresponding to the general alignment of the relief on the peninsula. It was therefore not possible to trace any connection of the supposed fortification system with the mound. All this, of course, calls into question the identification of elevation 111 as a hillfort, for which there are several supplementary reasons.

The so-called hillfort area is so small, narrow and steep that it could hardly have belonged to the type of hillfort permanently inhabited. Supporting this is the fact that the nearest fertile field, Malo and Veliko Zlo Poje, lies 1.5 km away from Štracine as the crow flies. In addition, there is no spring supplying fresh water and there are no visible remains of water collectors.⁵⁴ Buškariol noted that the wider Štracine area had no economic appeal due to its difficult accessibility and exposure to strong winds, emphasising that before the Second World War the area was used only for the collection of firewood and rosemary.⁵⁵ Moreover, unlike other Vis hills, the Štracine area was never terraced for cultivation, but served (besides the collection of wood) only as pastureland.⁵⁶ Thus, elevation 111 at Štracine was undoubtedly dominated by a large mound, but a permanent habitation area of the kind drawn by Buškariol cannot logically be assumed. It may perhaps be considered as a temporary lookout, since from the top of the peninsula there is a clear view of key maritime points: the entrance to Vis Bay, the islet of Host, the north-western part of Vis, Cape Ploča, Šolta, Hvar, Korčula with Kopila, Lastovo and Splitska Vrata.

Pottery

Due to heavy erosion, no prehistoric pottery was observed on the elevations of the peninsula, but it was recorded on its eastern slopes, away from the mound and the elevation. It resembles that from Grodac – with abundant calcite tem-

⁵⁴ *Ibid.*: 33.

⁵⁵ *Ibid.*

⁵⁶ Oral information provided by Trifun Linčir, the late Marko Poduje and Vicko Zorotović.

koliko primjera. Iako fragmenti tipološki pripadaju širem razdoblju, prema fakturi većina je vjerojatno iz mlađega željeznog doba.⁵⁷ Lončarija se uglavnom nalazila uz čisti-ne razbacanog kamenja.

Jedan ulomak lonca blago izvučenog i zaravnjenog oboda koji na prijelazu vrata u rame ima apliciranu traku s utiscima (T. II/1) pripada tipu koji se pojavljuje od brončanog pa do mlađeg željeznog doba na širem prostoru Jadrana, posebno Kvarnera. Tada je takav tip oboda bio čest dok je modelirana traka s ubodima tipična za brončano, ali i željezno doba.⁵⁸ Analogije postoje u Vaganačkoj pećini, gdje je pronađeni lonac datiran u kasno brončano i početak željeznog doba, no nema apliciranu traku, već samo modelirane plastične bradavice.⁵⁹ Slični primjeri pojavljuju se među liburnskom željeznodobnom lončarijom na Beretinoj gradini kod Radovina⁶⁰ te na gradini Sutiliji,⁶¹ a povezuju se s brončanodobnom tradicijom. Isti se tip može pratiti i u slojevima mlađeželjeznodobnog Danila, gdje je pronađen ulomak s plastičnim rebrom na prijelazu.⁶²

Pronađena su i dva primjera lonaca zatvorenijeg tipa. Prvi je primjer obod zaobljenog tipa (T. II/2) koji se nastavlja na loptasto tijelo, a svoje analogije ima u liburnskim primjerima s Iža⁶³ i Paga.⁶⁴ Drugi je primjer zaobljeni obod koji je kratko izvučen okomito prema gore i horizontalno zaravnjen, a nastavlja se na loptasto ili zaobljeno tijelo (T. II/3). Analogije su pronađene na brončanodobnim lokalitetima poput Sutilije⁶⁵ te na brojnim željeznodobnim lokalitetima

per and grog chaff, of medium-coarse to coarse fabric, with a few burnished examples. Most of the sherds are non-diagnostic, with only a few exceptions. Although typologically the fragments belong to a broad chronological range, the fabric suggests that probably most date to the Late Iron Age.⁵⁷ The pottery was generally found along clearings of scattered stone.

One pot sherd with a slightly everted and flattened rim, bearing an applied band with impressions at the junction of the neck and shoulder (Pl. II/1), belongs to a type that appears from the Bronze Age to the Late Iron Age across the wider Adriatic, especially in Kvarner. At that time this rim type was common, while the modelled band with impressions is typical of both the Bronze and Iron Ages.⁵⁸ Analogies are found in Vaganačka Pećina, where a pot was dated to the Late Bronze and Early Iron Age; however, it does not have an applied band but only modelled plastic knobs.⁵⁹ Similar examples occur in Liburnian Iron Age pottery at Beretina Gradina near Radovin⁶⁰ and at the Sutilija hillfort,⁶¹ where they are associated with the Bronze Age tradition. The same type can also be traced in the Late Iron Age layers at Danilo, where a sherd with a plastic rib on the junction was found.⁶²

Two examples of more closed-type pots were also found. The first is a rim of rounded type (Pl. II/2) continuing into a globular body, with analogies in Liburnian examples from Iž⁶³ and Pag.⁶⁴ The second is a rounded rim, slightly everted vertically upwards and flattened horizontally, continuing into a globular or rounded body (Pl. II/3). Analogies have been recorded at Bronze Age sites such as Sutilija,⁶⁵

⁵⁷ Zaključak utemeljen na uvidu u materijal koji je učinila Asja Tonc.

⁵⁸ VUKOVIĆ 2014: 24.

⁵⁹ FORENBAHER, VRANJICAN 1985: T. XI/8.

⁶⁰ VUKOVIĆ 2014: T. IV/11.

⁶¹ PARAMAN, UGARKOVIĆ 2021: T. II/32.

⁶² KOROŠEC 1959: T. X/1.

⁶³ BATOVIĆ 1973: T. XCIV/1.

⁶⁴ *Ibid.*: 106–107, T. LXV/1.

⁶⁵ PARAMAN, UGARKOVIĆ 2021: T. I/13.

⁵⁷ Conclusion based on the examination of the material carried out by Asja Tonc.

⁵⁸ VUKOVIĆ 2014: 24.

⁵⁹ FORENBAHER, VRANJICAN 1985: Pl. XI/8.

⁶⁰ VUKOVIĆ 2014: Pl. IV/11.

⁶¹ PARAMAN, UGARKOVIĆ 2021: Pl. II/32.

⁶² KOROŠEC 1959: Pl. X/1.

⁶³ BATOVIĆ 1973: Pl. XCIV/1.

⁶⁴ *Ibid.*: 106–107, Pl. LXV/1.

⁶⁵ PARAMAN, UGARKOVIĆ 2021: Pl. I/13.

poput Beretinove glavice kod Radovina,⁶⁶ Rata na Braču,⁶⁷ Starigrada kod Paklenice⁶⁸ i dr.

Jezičasta drška na primjeru T. II/4 jedna je od glavnih obilježja jadranskoga željeznodobnog materijala, no pojavljuje se i ranije. Javlja se od kasnoga srednjeg brončanog doba i egzistira na keramici sve do željeznog doba.⁶⁹ Za željezno su doba česta ravna dna, a jedan ulomak pronađen je i na Štracinama (T. II/5).⁷⁰ Analogni primjerci potječu iz željeznodobnih slojeva Orjaka⁷¹ i Gradinice⁷² te iz kasnobrončanodobnih do ranoželjeznodobnih slojeva bračkog Škripa.⁷³

Iako Buškariol piše da na Štracinama nema grčke i rimske keramike,⁷⁴ vrijedan primjer helenističke lončarije pronađen je u odronu kamenja, vjerojatno nastalog pri pljačkanju središnje ukopne komore. Ulomak je dijagnostički, a prema analognim primjercima u literaturi zaključuje se da pripada stamnoidnoj piksidi 3. st. pr. Kr. (T. III/1).⁷⁵ Dodatno, na padinama je pronađena još jedna ručka skifa koja se može tipološki odrediti kao Gnathia ili crno premazana keramika (T. III/2). Oba su nalaza indikativan primjer grčkog utjecaja i na sjeveroistočnom dijelu Visa, ali o kontekstu njihova pristizanja trenutno nije moguće detaljnije raspravljati. Na gomili je prikupljen i jedan mali obod finije izrade koji vjerojatno pripada prvim stoljećima naše ere.⁷⁶

Budući da su ulomci pronađeni na popriličnoj udaljenosti sjeveroistočno od pretpostavljene gradine, nemoguće je govoriti o

as well as at numerous Iron Age sites including Beretinova Glavica near Radovin,⁶⁶ Rat on Brač,⁶⁷ Starigrad near Paklenica⁶⁸ and others.

The tongue-shaped handle on the specimen Pl. II/4 is one of the main features of Adriatic Iron Age material, although it appeared even earlier. It occurred from the Late Middle Bronze Age on and continued to be present on pottery into the Iron Age.⁶⁹ Flat bases were common in the Iron Age, and one sherd of this type was found at Štracine (Pl. II/5).⁷⁰ Analogous examples come from the Iron Age layers of Orjak⁷¹ and Gradinica,⁷² as well as from the Late Bronze to Early Iron Age layers of Škrip on Brač.⁷³

Although Buškariol wrote that no Greek or Roman pottery was present at Štracine,⁷⁴ a significant example of Hellenistic pottery was found in a stone collapse that probably resulted from the looting of the central burial chamber. The sherd is diagnostic, and on the basis of analogous examples in the literature it is concluded to belong to a stamnoid pyxis of the 3rd century BC (Pl. III/1).⁷⁵ In addition, another skyphos handle was found on the slopes, which can be typologically identified as Gnathia or black-glazed ware (Pl. III/2). Both finds are indicative examples of Greek influence also in the north-eastern part of Vis, although at present it is not possible to discuss in more detail the context of their arrival. From the tumulus a small rim of finer workmanship was also collected, most probably dating to the first centuries AD.⁷⁶

Since the sherds were found at a considerable distance north-east of the supposed hill-

⁶⁶ VUKOVIĆ 2014: T. II/5.

⁶⁷ BARBARIĆ 2011: T. VIII/66.

⁶⁸ DUBOLNIĆ 2006: T. II/7.

⁶⁹ FORENBAHER, VRANJICAN 1985: 14.

⁷⁰ VUKOVIĆ 2018: 55.

⁷¹ BATOVIĆ 1973: 106-107, T. XCVI/6.

⁷² VUKOVIĆ 2018: 55, T. I/2.

⁷³ FABER, NIKOLANCI 1985: T. I/1.

⁷⁴ BUŠKARIOL 1982: 33.

⁷⁵ Usp. CAMBI, KIRIGIN, MARIN 1981a: 69, T. XI/20; KIRIGIN 1986: 31, kat. br. 182; JOVANOVIĆ 2021: 70, kat. br. 76.

⁷⁶ Usmena informacija: Asja Tonc i Emil Podrug.

⁶⁶ VUKOVIĆ 2014: Pl. II/5.

⁶⁷ BARBARIĆ 2011: Pl. VIII/66.

⁶⁸ DUBOLNIĆ 2006: Pl. II/7.

⁶⁹ FORENBAHER, VRANJICAN 1985: 14.

⁷⁰ VUKOVIĆ 2018: 55.

⁷¹ BATOVIĆ 1973: 106-107, Pl. XCVI/6.

⁷² VUKOVIĆ 2018: 55, Pl. I/2.

⁷³ FABER, NIKOLANCI 1985: Pl. I/1.

⁷⁴ BUŠKARIOL 1982: 33.

⁷⁵ Cf. CAMBI, KIRIGIN, MARIN 1981a: 69, Pl. XI/20, KIRIGIN 1986: 31, Cat. No. 182; JOVANOVIĆ 2021: 70, Cat. No. 76.

⁷⁶ Oral information: Asja Tonc and Emil Podrug.

erodiranom materijalu koji bi pripadao koti 111. Ipak, jedino sustavna arheološka istraživanja ili terenski pregled uz intenzivno čišćenje vegetacije mogu pridonijeti većem razumijevanju uloge Štracina u prapovijesnim vremenima.

TERENSKI PREGLED GRADINA NA JUŽNOJ STRANI VISA

Talež – Kopacine i Vela gomila (sl. 7)

Talež je naziv za predio južnih padina otoka Visa na kojem su smještene gradina Kopacine (Kopačine) i Vela gomila. Kopacine su nedvojbeno bile najveća i najvažnija viška gradina. Taj se položaj nalazi na nadmorskoj visini od oko 245 m, a vizualno nadzire cijeli akvatorij južno od otoka, uključujući otoke Hvar, Korčulu, Lastovo, Sušac te poluotok Pelješac.⁷⁷ Jugoistočno od najviše kote (tzv. akropole) proteže se podgrađe usmjereno prema Taleškoj uvali, koja je mogla poslužiti kao manje pristanište. Ondje se, kao i u Grodačkoj uvali, nalazi mala šljunčana plaža, prikladna za izvlačenje brodova. Dominantnije sidrište Rukavac nalazi se tri nautičke milje prema istoku.⁷⁸ Gradina je bila ovalnog oblika, omeđena velikim zidinama od poligonalnih kamenih blokova koje prate konfiguraciju terena u nekoliko razina. Fortifikacijski je sustav samo djelomično očuvan, jer je vojska početkom 70-ih godina 20. stoljeća gradeći cestu miniranjem i nasipavanjem terena devastirala pristupni, središnji i sjeverni dio gradine.⁷⁹ Detaljan opis bedema, sustava ulaza, podgrađa sačinjenog od platformi i terasa za nastambe građenih u dvije faze donio je Miro Katić.⁸⁰ Na temelju suhozida u podgrađu predložio je da se nase-

⁷⁷ KIRIGIN *et al.* 2024: 80.

⁷⁸ *Ibid.*: 81.

⁷⁹ BUŠKARIOL 1982: 35.

⁸⁰ KATIĆ 2009: 37-40.

fort, it is impossible to speak of eroded material that would have belonged to elevation 111. A better understanding of the role of Štracine in prehistoric times could only be achieved through systematic archaeological excavations, or a field survey coupled with intensive vegetation clearance.

FIELD SURVEY OF THE HILL-FORTS ON THE SOUTHERN SIDE OF VIS

Talež – Kopacine and Vela Gomila (Fig. 7)

Talež is the name of the area on the southern slopes of the island of Vis where the hillforts of Kopacine (Kopačine) and Vela Gomila are situated. Kopacine was undoubtedly the largest and most important hillfort on Vis. The site lies at an elevation of about 245 m and visually commands the entire seaway south of the island, including the islands of Hvar, Korčula, Lastovo and Sušac, as well as the Pelješac peninsula.⁷⁷ South-east of the highest point (the so-called *acropolis*) extends the *suburbium* facing Talež Bay, which may have served as a small landing place. There, as in Grodac Bay, a small pebble beach is to be found, suitable for hauling boats ashore. The more prominent anchorage of Rukavac lies 3 nautical miles to the east.⁷⁸ The hillfort was oval in shape, enclosed by large walls of polygonal stone blocks following the terrain in several tiers. The fortification system is only partly preserved, as in the early 1970s the army, in constructing a road by blasting and infilling, devastated the central and northern parts of the hillfort as well as access to it.⁷⁹ A detailed description of the ramparts, entrance system, and *suburbium* composed of platforms and terraces for dwellings built in two phases was provided by Miro Katić.⁸⁰ On the evidence of the dry-stone walls in the *suburbium*, he

⁷⁷ KIRIGIN *et al.* 2024: 80.

⁷⁸ *Ibid.*: 81.

⁷⁹ BUŠKARIOL 1982: 35.

⁸⁰ KATIĆ 2009: 37-40.

lje u drugoj fazi povećalo do površine od 5 ha. Razlog tome možda je bio blizak trgovački kontakt s Apulijom krajem starijega željeznog doba.⁸¹ Iako je gradinski prostor na više mjesta znatno erodiran, vidljivi su tragovi arhitekture pravokutnog tlocrta te klesarske intervencije u kamenu živcu. Posljednju fazu fortificiranja (tzv. bastione) Katić promatra kroz širenje grčkih utjecaja i datira u 4./3. st. pr. Kr.⁸² Literatura ističe obilje prapovijesne, daunijske, grčke, heleničke, rimske, srednjovjekovne i recentne uporabne keramike te ostatke kućnog lijepa, crjepova, korintskih amfora i pitosa.⁸³ Sudeći prema kronološkoj analizi, dominira materijal od srednjega brončanog te iz željeznog doba.⁸⁴ Međutim, struka nije složna oko napuštanja Kopacina – dok se jedna struja zalaže za prestanak aktivnosti tijekom ranog 4. st. pr. Kr., drugi podupiru kontinuitet života i kroz 3. st. pr. Kr.⁸⁵

U okolici Kopacina pronađeno je i nekoliko brončanih predmeta, među ostalim lučna dvopetljasta fibula s trokutastom nogom, dva ulomka spiralno-naočalaste fibule, ulomak pojase kopče glasinačkog tipa s vijencem latica, tri kalotasta dugmeta te kolut romboidnog presjeka.⁸⁶ Ovi predmeti, od kojih dva datiraju u drugu polovicu 8. i 7. st. pr. Kr., možda potječu iz taleške nekropole. Kopacine su bile središte metalurških djelatnosti, što potvrđuju nalazi željezne troske, ulomci keramike s tragovima željeza te dna posuda s vidljivim ostacima obrade. Međutim, zbog izostanka detaljnijih analiza, može se samo nagađati jesu li prapovijesni stanovnici Kopacina uvozili željeznu sirovinu iz balkanske unutrašnjosti ili su ek-

suggested that in the second phase the settlement expanded to an area of 5 ha. The reason for this may have been close trading contact with Apulia at the end of the Early Iron Age.⁸¹ Although the hillfort area is in many places heavily eroded, traces of rectangular architecture and quarrying interventions in the living rock are still visible. The final phase of fortification (the so-called bastions) was viewed by Katić in the context of the spread of Greek influence and dated to the 4th/3rd century BC.⁸² The literature highlights the abundance of prehistoric, Daunian, Greek, Hellenistic, Roman, medieval and more recent utilitarian pottery, as well as remains of house daub, tiles, Corinthian amphorae and pithoi.⁸³ According to chronological analysis, material from the Middle Bronze Age through into the Iron Age predominates.⁸⁴ However, there is no consensus regarding the abandonment of Kopacine: while one view argues for the cessation of activity during the early 4th century BC, others support the continuity of habitation there into the 3rd century BC.⁸⁵

Several bronze artefacts have also been found in the vicinity of Kopacine, among them a two-looped bow fibula with a triangular foot, two fragments of a spectacle fibula, a fragment of a Glasinac-type belt buckle with a wreath of petals, three calotte-shaped buttons, and a hoop of rhomboid cross-section.⁸⁶ These objects, two of which date to the second half of the 8th and to the 7th century BC, may have come from the Talež necropolis. Kopacine was a centre of metallurgical activity, as evidenced by finds of iron slag, sherds bearing traces of iron, and vessel bases with visible traces of working. However, in the absence of more detailed analyses, whether the prehistoric inhabitants of Kopacine imported

⁸¹ *Ibid.*: 34, 40.

⁸² *Ibid.*: 44.

⁸³ BUŠKARIOL 1982: 36; KIRIGIN *et al.* 2006: 50; KATIĆ 2009: 40–44; ČARGO 2021b: 26; KIRIGIN *et al.* 2024: 86–93.

⁸⁴ KIRIGIN *et al.* 2024: 92.

⁸⁵ Usp. KIRIGIN *et al.* 2024: 93; 98 i KATIĆ 2009: 40 i 45.

⁸⁶ Vidjeti detaljnije u PROTIĆ 1985: 40–43; ČARGO 2021b: 25; KIRIGIN *et al.* 2024: 81.

⁸¹ *Ibid.*: 34, 40.

⁸² *Ibid.*: 44.

⁸³ BUŠKARIOL 1982: 36; KIRIGIN *et al.* 2006: 50; KATIĆ 2009: 40–44; ČARGO 2021b: 26; KIRIGIN *et al.* 2024: 86–93.

⁸⁴ KIRIGIN *et al.* 2024: 92.

⁸⁵ Cf. KIRIGIN *et al.* 2024: 93; 98 and KATIĆ 2009: 40 and 45.

⁸⁶ For further details: PROTIĆ 1985: 40–43; ČARGO 2021b: 25; KIRIGIN *et al.* 2024: 81.



SLIKA 7. Aerofotografija Vele gomile i gradine Kopacine na Taležu (snimio: J. Triplat)

FIGURE 7 Aerial photograph of Vela Gomila and the hillfort of Kopacine at Talež (photo by J. Triplat)

sploatirali alternativne izvore.⁸⁷

Pri terenskom pregledu 2022. pronađeni su brojni komadi amorfne prapovijesne keramike čiji ulomci variraju u debljini stijenske, primjesama, boji i kvaliteti. Najveća je koncentracija primijećena na jugoistočnim padinama gradine, odnosno u tzv. podgrađu. Pronađena su i četiri primjerka prapovijesne crno glačane keramike, ali i jedan nedijagnostički ulomak helenističke crnopremazane keramike. Prostor se sve donedavno upotrebljavao za ispašu, a najviše se površinske keramike danas nalazi uz suhozide.

Vela gomila smještena je oko 800 m istočno od Kopacina, na vrhu uzvisine podno gradine koja vodi prema uvali Taleška. Iako je blizu morskoj obali, pristup do uvale nije jednostavan. Osim s Kopacina, Veloj gomili može se pristupiti iz Dracevog i Velog polja stazom od suvremenog zaselka Pod Kunjinovo. Ostaci zida na tom putu sugeriraju da je pristup iz tog smjera u prapovijesno doba

iron raw material from the Balkan hinterland or exploited alternative sources can only be a matter for conjecture.⁸⁷

During the 2022 field survey, numerous fragments of amorphous prehistoric pottery were found, varying in wall thickness, temper, colour and quality. The highest concentration was observed on the south-eastern slopes of the hillfort, that is, in the so-called *suburbium*. Four specimens of prehistoric black-burnished pottery were found, as well as one non-diagnostic sherd of Hellenistic black-glazed pottery. The area was used as pasture until recently, and today most of the surface pottery is found along the dry-stone walls.

Vela Gomila is situated about 800 m east of Kopacine, on the top of an elevation below the hillfort leading towards Talež Bay. Although it is close to the sea, access to the bay is not straightforward. Other than from Kopacine, Vela Gomila can also be reached from Dracevo and Velo Polje by a path from the modern hamlet of Pod Kunjinovo. Remains of a wall along this path

⁸⁷ Usp. GAFFNEY *et al.* 2002: 49; KATIĆ 2009: 35–36; KIRIGIN *et al.* 2024: 93.

⁸⁷ Cf. GAFFNEY *et al.* 2002:49; KATIĆ 2009: 35-36; KIRIGIN *et al.* 2024: 93.

mogao biti kontroliran.⁸⁸ Literatura donosi različite dimenzije gomile (oko 32 do 33 m × 23 do 26 m × 3 do 12 m),⁸⁹ a razlog variranja širine i duljine valja tražiti u stanju zaraštenosti terena i početnim točkama mjerenja. S južne strane gomile pruža se strma litica. Devastacije na gomili iznišile su na vidjelo arheološki materijal, a nastale su kao posljedica potraga za „blagom”, među ostalim zbog lokalne legende o grobu Teutina sina na Visu, ali i izgradnje mitraljeskih gnijezda tijekom 20. stoljeća.⁹⁰ Gomila je re-kognoscirana više puta, a s lokaliteta potječu ulomci prapovijesne, južnoitalske mat slikane (8. do 4. st. pr. Kr.), crnofiguralne, Gnathia, helenističke i rimske stolne keramike te jedan ulomak amfore Korint B i moguće Lamboglia 2.⁹¹ Usto, tijekom terenskog pregleda koji su proveli članovi tima projekta *The Adriatic Islands* na gomili su prepoznata 163 ulomka grčkih crjepova ili pitosa, kućni lijep, ulomci puža ogrca (*Monodonta turbinata*) i volka (*Murex*), dva oblutka od penteličkog mramora te dio omega-fibule.⁹² Budući da Vela gomila nije temeljito arheološki obrađena, funkcija ostaje nerazjašnjena. Neki je promatraju kao vrstu javnog spomenika s kontinuitetom deponiranja materijala koja se mogla promatrati kao grob mitskog junaka,⁹³ dok je drugi zbog monumentalnosti ubrajaju u tzv. kneževske humke, a na osnovi obilne lončarije i nagonenih životinjskih kostiju ističu ritualnu

suggest that access from this direction may have been controlled in prehistoric times.⁸⁸ The literature records varying dimensions of the cairn (c. 32–33 m × 23–26 m × 3–12 m),⁸⁹ with the differences in width and length attributable to the overgrown state of the terrain and the chosen starting points of measurement. On its southern side a steep cliff falls away. Damage to the cairn resulting from treasure hunting – fuelled in part by a local legend of the grave of Teuta's son on Vis – as well as from the construction of machine-gun nests during the 20th century has exposed archaeological material.⁹⁰ The site has been prospected several times, and finds include sherds of prehistoric pottery, South Italian matt-painted ware (8th–4th centuries BC), black-figure, Gnathia, Hellenistic and Roman fineware, together with a sherd of Corinthian B and a possible Lamboglia 2 amphora.⁹¹ In addition, during the field survey carried out by members of the Adriatic Islands Project team, 163 fragments of Greek tiles or pithoi were recorded there, along with house daub, fragments of the sea snail *Monodonta turbinata* and the murex (*Murex*), two pebbles of Pentelic marble, and part of an omega fibula.⁹² Since Vela Gomila has not been thoroughly archaeologically investigated, its function remains unclear. Some view it as a kind of public monument with a continuity of deposited material that may have been regarded as the grave of a mythical hero,⁹³ while others, because of its monumentality, classify it among the so-called Prince Mounds. Pottery and

⁸⁸ *Ibid.*: 83.

⁸⁹ BUŠKARIOL 1982: 40; KATIĆ 2009: 45. Razlog velike visinske razlike Vele gomile leži u njezinoj poziciji na litici.

⁹⁰ BUŠKARIOL 1982: 40.

⁹¹ Ulomak crnofiguralne keramike pronašao je viški nastavnik i arheolog Vid Biličić tijekom jednog od brojnih terenskih pregleda. Bio je pohranjen u zbirci osnovne škole, odakle je nestao početkom 70-ih godina 20. stoljeća (BUŠKARIOL 1982: 40). Ostalu vrstu keramičkih ulomaka spominju autori koji su pregledavali teren od 80-ih godina do danas (BUŠKARIOL 1982: 40; KIRIGIN *et al.* 2006: 50; KATIĆ 2009: 46; ČARGO 2021b: 27; KIRIGIN *et al.* 2024: 94).

⁹² KIRIGIN *et al.* 2024: 94.

⁹³ KIRIGIN *et al.* 2024: 97.

⁸⁸ *Ibid.*:83.

⁸⁹ BUŠKARIOL 1982: 40; KATIĆ 2009: 45. The reason for the Vela Gomila's great height difference lies in its position on the cliff.

⁹⁰ BUŠKARIOL 1982: 40.

⁹¹ A fragment of black-figure pottery was found by the Vis teacher and archaeologist Vid Biličić during one of numerous field surveys. It was kept in the collection of the primary school, from where it disappeared in the early 1970s (BUŠKARIOL 1982: 40). Other types of pottery sherds have been mentioned by authors surveying the site from the 1980s to the present (BUŠKARIOL 1982: 40; KIRIGIN *et al.* 2006: 50; KATIĆ 2009: 46; ČARGO 2021b: 27; KIRIGIN *et al.* 2024: 94).

⁹² KIRIGIN *et al.* 2024: 94.

⁹³ KIRIGIN *et al.* 2024: 97.

ulogu povezanu s kultom pokojnika.⁹⁴

Tijekom projekta provedenog 2022. pregledan je perimetar unutar prstenastog ruba gomile. U njemu su pronađeni mnogobrojni ulomci keramike, među kojima izdvajamo četiri komada prapovijesne lončarije, dva s kaneliranim rubom i dva s ukrasom izvedenim utiskivanjem prsta. Prikupljeno je i nekoliko ulomaka nedijagnostičke helenističke lončarije, među kojima šest crnopremazane ili keramike tipa Gnathia. Samo jedan fragment pouzdano pripada helenističkoj crnopremazanoj keramici, dok bi jedan prema obliku pripadao skifu. Registrirano je nekoliko fragmenata metala. Oko 40 % prikupljenog materijala pripada rimskoj uporabnoj keramici.

Krušovice (sl. 8)

Stočarski krajolik Krušovice (Kruševica) spomenut je u literaturi kao prapovijesni lokalitet.⁹⁵ S njegove je južne strane uvala Vini bok, a na sjeveroistoku plodno Dracevo polje. Rezultati terenskog pregleda koji su objavljeni 2006. izdvojili su ondje dvije gomile.⁹⁶ Prva je veća s promjerom od 15 m i visinom od 2 m (VS 1103.00). Njezin je središnji dio devastiran i ondje danas stoji maleni suhozid. Literatura ističe vizualnu komunikaciju s Taležom, Svetim Duhom i Svetim Vidom. Na njoj su pronađena tri ulomka prapovijesne keramike.⁹⁷ Druga gomila ima dimenzije 9 m u promjeru i 1,5 m visine (VS 1104.00), a sjeverni joj je dio uništen kasnijim pregradnjama. Na njoj tada nije pronađen pokretni materijal. Kao i u prethodnom slučaju, ističe se vizualni kontakt s Taležom i Svetim Duhom.⁹⁸

Istraživanje provedeno 2022. imalo je cilj ponovno razmotriti ovaj krajolik. Iako su

charred animal bones are abundant, pointing to a ritual role associated with the cult of the dead.⁹⁴

During the 2022 project, the perimeter within the ring-shaped edge of the cairn was surveyed. Numerous pottery sherds were found, among which we highlight four pieces of prehistoric pottery: two with cannellured rims and two decorated with fingertip impressions. Several sherds of non-diagnostic Hellenistic pottery were also collected, including six of black-glazed or *Gnathia* ware. Only one fragment can be attributed with confidence to Hellenistic black-glazed pottery, while another, by its form, may have belonged to a skyphos. Several metal fragments were also recorded. About 40 % of the collected material is Roman utilitarian pottery.

Krušovice (Fig. 8)

The pastoral landscape of Krušovice (Kruševica) is mentioned in the literature as a prehistoric site.⁹⁵ To its south lies Vini Bok Bay, and to the north-east the fertile Dracevo Polje. The results of the field survey published in 2006 identified two cairns there.⁹⁶ The first and larger one measures 15 m in diameter and 2 m in height (VS 1103.00). Its central part has been devastated, and today a small dry-stone wall stands there. The literature emphasises its visual communication with Talež, Sveti Duh and Sveti Vid. Three sherds of prehistoric pottery were found on it.⁹⁷ The second cairn measures 9 m in diameter and 1.5 m in height (VS 1104.00), and its northern part was destroyed by later rebuilding. No movable artefacts were found there at the time, but, as in the previous case, visual contact with Talež and Sveti Duh is emphasised.⁹⁸

The survey carried out in 2022 aimed to re-examine this landscape. Although quadrants had previously been established, the grid could not be followed due to poor terrain accessibility caused

⁹⁴ KATIĆ 2009: 46–47.

⁹⁵ BILIČIĆ 1994: 4–9.

⁹⁶ KIRIGIN *et al.* 2006: 38–39.

⁹⁷ *Ibid.*: 38.

⁹⁸ *Ibid.*: 39.

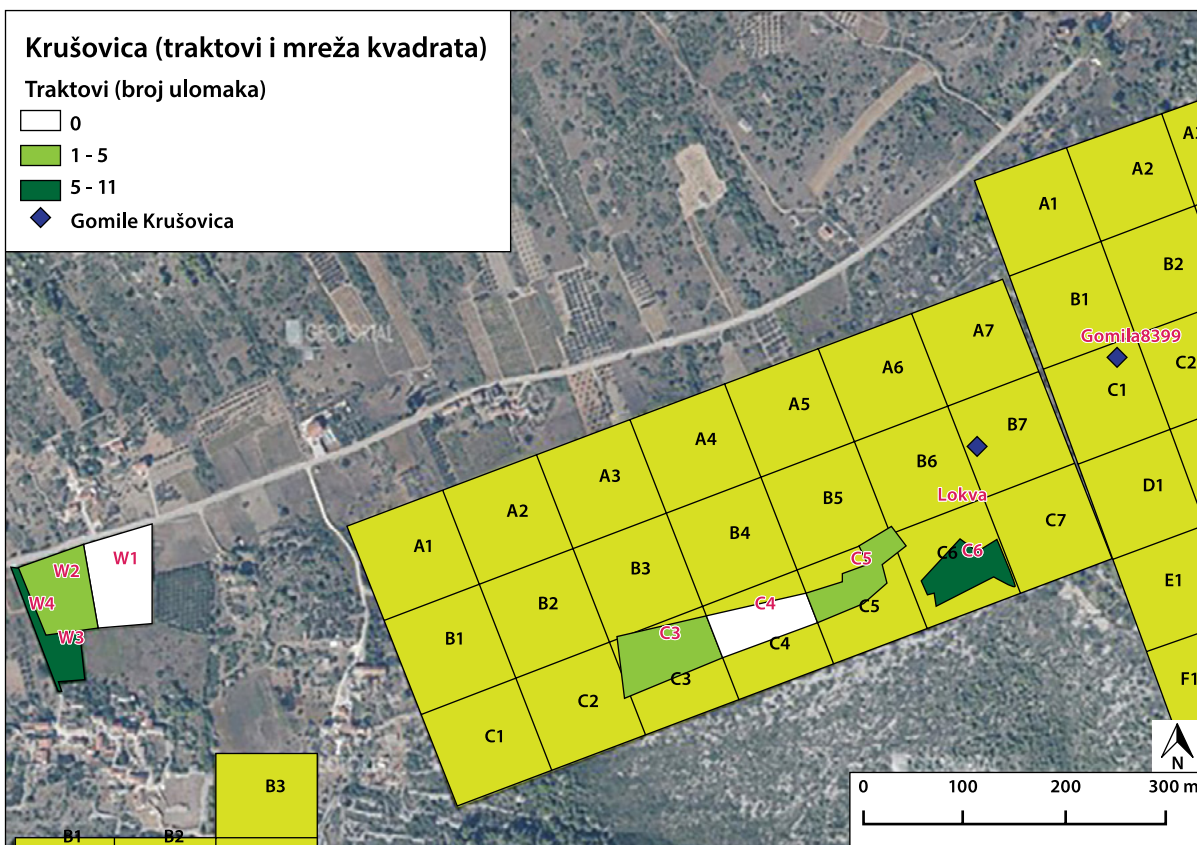
⁹⁴ KATIĆ 2009: 46–47.

⁹⁵ BILIČIĆ 1994: 4–9.

⁹⁶ KIRIGIN *et al.* 2006: 38–39.

⁹⁷ *Ibid.*: 38.

⁹⁸ *Ibid.*: 39.



SLIKA 8. Mreža kvadranta za područje Krušovica s naznačenim rezultatima (izradio: J. Triplat)

FIGURE 8 Grid of quadrants for the Krušovica area with indicated results (made by J. Triplat)

kvadranti prethodno bili određeni, mrežu nije bilo moguće pratiti zbog loše prohodnosti terena uzrokovane gustom vegetacijom pa je prostor selektivno prehodan (sl. 8). Na poziciji Lokva na Krušovici (kvadrant A2/C6) pronađeni su ulomak rimske, dva ulomka novovjekovne, ponešto glazirane keramike te još primjeraka kojima nije moguće odrediti dataciju. Uočeno je i mnoštvo hematita. U kvadrantu A2/C3 zabilježene su dvije gomile u sklopu terasastih struktura. Zbog manjka arheološkog materijala trenutno nije moguće odrediti jesu li gomile prapovijesne ili su nastale u novije vrijeme kad se krčila zemlja za izradu terasa.

Na najvišim kotama Krušovice, unutar kvadranta A2/B7 (B398) i A3/C1 (B399) (sl. 8), ubicirane su dvije prapovijesne gomile s prstenima od naslaganog kamenja. Na manjoj gomili, promjera 2 m, nije pronađen arheološki materijal. Na većoj, promjera 8 m, pronađena su dva ulomka keramike s

by dense vegetation, so the area was selectively walked (Fig. 8). At the Lokva na Krušovici site (quadrant A2/C6), a Roman sherd, two sherds of Early Modern pottery, some glazed ware, and several other fragments of undetermined date were found. A large quantity of haematite was also noted. In quadrant A2/C3, two cairns were recorded as part of terraced structures. Due to the lack of archaeological material, it is currently not possible to determine whether they are prehistoric or were created more recently when land was cleared for terrace construction.

On the highest elevations of Krušovice, within quadrants A2/B7 (B398) and A3/C1 (B399) (Fig. 8), two prehistoric cairns with rings of stacked stones were located. On the smaller cairn, 2 m in diameter, no archaeological material was found. On the larger cairn, 8 m in diameter, two sherds of hand-made pottery with temper were found, while no archaeological material was noted within or around the ring. On the basis of a comparison with the earlier publication, this

primjesama koja nije rađena na lončarskom kolu, dok unutar i oko prstena nije bilo arheoloških nalaza. Na temelju usporedbe sa starijom objavom, ova gomila odgovara drugoj (VS 1104.00), no samo se paušalno može datirati u prapovijesno doba.

Sveti Duh (sl. 9)

Sveti Duh jedna je od kota (564 m) planinskog masiva na zapadnom dijelu Visa. Nalazi se sjeveroistočno od najvišega otočnog vrha Velog Huma (587 m). Potonji su položaj autori često određivali kao važan prapovijesni lokalitet,⁹⁹ no nekoliko terenskih pregleda pokazalo je da je Sveti Duh arheološki znatno bogatiji.¹⁰⁰ Na zaravni čija je najveća širina oko 50 m, a dužina 35 m danas dominira crkva Svetog Duha. Teren je u velikoj mjeri uništen, a erozija je na dijelovima potpuno isprala slojeve. Bedemi su bili izgrađeni od krupnih komada neobrađenog vapnenca bez upotrebe vezivnog sredstva. Najzaštićenija je bila istočna i južna strana, gdje se može najlakše pristupiti gradini, dok se na sjeveroistoku naziru tragovi dvostrukih zidina.¹⁰¹ Frane Buškariol svojevremeno je zidine okarakterizirao kao poluprstenaste zbog diskontinuiteta na zapadnoj strani gdje kao prirodne barijere stoje strme hridi. Iako su na brojnim mjestima devastirane zbog rovova, autor je istaknuo vidljivu visinu vanjskog lica bedema od oko 1 m, uz širinu od 3 m.¹⁰² Zbog male omeđene površine, ali izvrsnih vizualnih predispozicija, u novijoj je literaturi Sveti Duh definiran kao mala gradina koja je prvenstveno služila kao motrište.¹⁰³ U starijoj literaturi keramički se materijal prema primjesama kalcita datirao u srednje brončano doba,¹⁰⁴ no prema sastavu moguće je predložiti i širi kronološki raspon, sve do konca prapovi-

cairn would correspond to the second one (VS 1104.00), but it can only be broadly dated to the prehistoric period.

Sveti Duh (Fig. 9)

Sveti Duh is one of the peaks (564 m) of the mountain massif in the western part of Vis. It lies north-east of the island's highest peak, Veli Hum (587 m). The latter location has often been identified by authors as an important prehistoric site,⁹⁹ but several field surveys have shown that Sveti Duh is archaeologically far richer.¹⁰⁰ On the plateau, which measures about 50 m at its widest and 35 m in length, the Church of the Holy Spirit (Sveti Duh) now dominates. The terrain has been heavily disturbed, and erosion has in places completely removed the layers. The ramparts were built of large pieces of unworked limestone without the use of binding material. The most protected parts were the eastern and southern sides, where access to the hillfort is easiest, while on the north-east, traces of double walls can be discerned.¹⁰¹ Frane Buškariol once described the walls as semi-ring-shaped due to the discontinuity on the western side, where steep cliffs serve as natural barriers. Although in many places devastated by trenches, the author noted that the outer face of the rampart was still visible to a height of about 1 m, with a width of 3 m.¹⁰² Because of its small enclosed area but excellent visual advantages, in more recent literature Sveti Duh has been defined as a small hillfort that primarily served as a lookout.¹⁰³ In earlier literature, the pottery material, based on calcite temper, was dated to the Middle Bronze Age¹⁰⁴, but its composition allows for a broader chronological range, extending to the end of prehistory. Around

⁹⁹ *Ibid.*: 34.

¹⁰⁰ BUŠKARIOL 1982:34; KIRIGIN *et al.* 2006: 19 sa starijom literaturom.

¹⁰¹ KIRIGIN *et al.* 2006: 19.

¹⁰² BUŠKARIOL 1982: 34.

¹⁰³ ČARGO 2021b: 25.

¹⁰⁴ FISKOVIĆ 1968: 120; BUŠKARIOL 1982: 34.

⁹⁹ *Ibid.*: 34.

¹⁰⁰ BUŠKARIOL 1982: 34; KIRIGIN *et al.* 2006: 19 with earlier references.

¹⁰¹ KIRIGIN *et al.* 2006: 19.

¹⁰² BUŠKARIOL 1982: 34.

¹⁰³ ČARGO 2021b: 25.

¹⁰⁴ FISKOVIĆ 1968: 120; BUŠKARIOL 1982: 34.



SLIKA 9. Aerofotografija brda Sveti Vid i Velog polja iz 1943. (izvor: zbirka V. Mratinića)

FIGURE 9 Aerial photograph of Mount Sveti Vid and of Velo Polje from 1943 (source: V. Mratinić collection)

jesti. Oko gotičke crkve Svetog Duha tijekom terenskog pregleda 90-ih godina 20. stoljeća pronađen je velik broj prapovijesne keramike te ulomci žrvnjeva i polovica kamene sjekire,¹⁰⁵ dok je 2022. prikupljeno nekoliko nedijagnostičkih ulomaka keramike. Zbog odsutnosti tragova upotrebe lončarskog kola, karakterističnih primjesa i tehnike pečenja, vjerojatno pripadaju prapovijesnom razdoblju.

Sveti Vid (sl. 10)

Sveti Vid je brežuljak između Dracevog i Velog polja. Njegov je vrh elipsasta uzvisina, površine oko 2800 m² i nadmorske visine 190 m. Na rubovima je obzidan suhozidnim bedemom čiji se blokovi jasno primjećuju.¹⁰⁶ Opseg zidina prije devastacije potvrđuje i

the Gothic Church of the Holy Spirit, a large quantity of prehistoric pottery, together with fragments of querns and half of a stone axe,¹⁰⁵ was found during field surveys in the 1990s, while in 2022 several non-diagnostic pottery sherds were collected. Due to the absence of traces of a potter's wheel, the characteristic tempers and the firing technique, it is most likely they date to the prehistoric period.

Sveti Vid (Fig. 10)

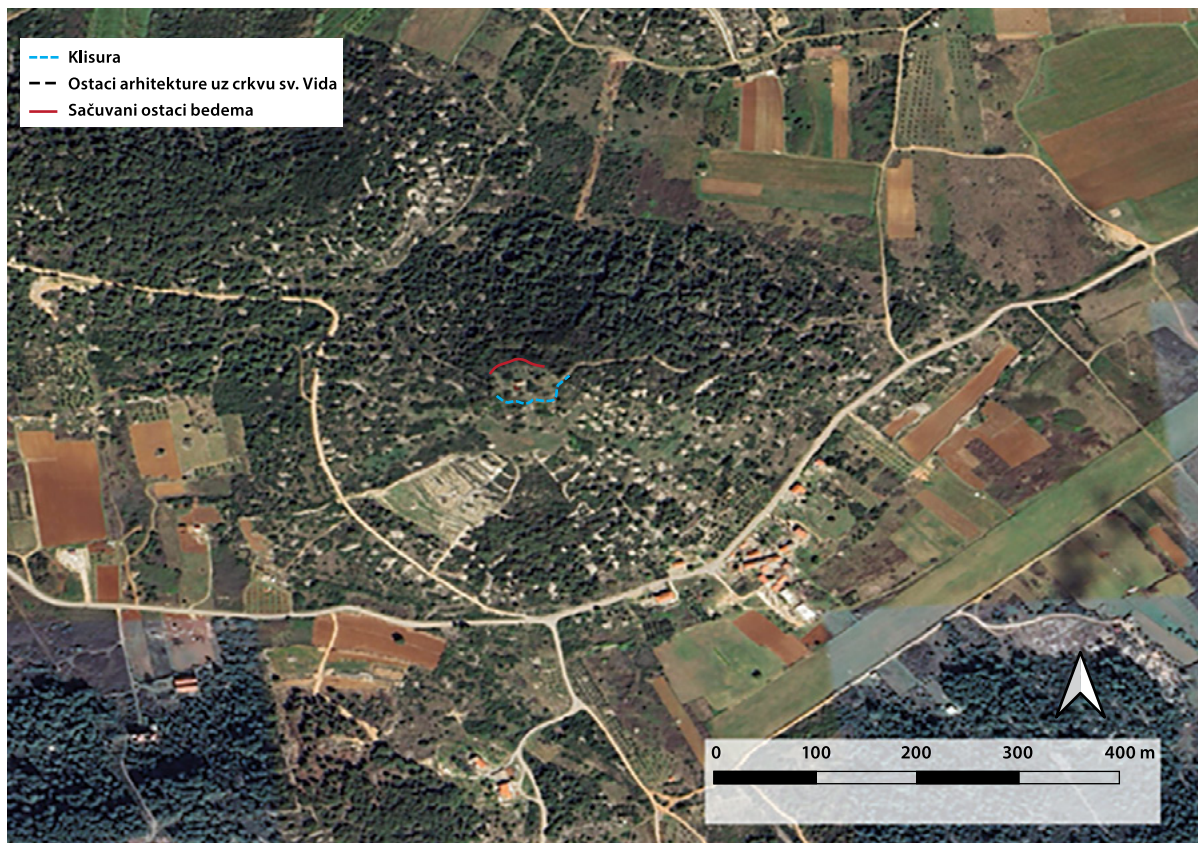
Sveti Vid is a hill situated between Dracevo and Velo Polje. Its summit is an elliptical elevation, covering an area of about 2,800 m² and standing at 190 m above sea level. Its edges are enclosed by a dry-stone rampart, the blocks of which are clearly visible.¹⁰⁶ The ex-

¹⁰⁵ KIRIGIN *et al.* 2006:19.

¹⁰⁶ BUŠKARIOL 1982: 37; KIRIGIN *et al.* 2006: 14 sa starijom literaturom; ČARGO 2021b: 26.

¹⁰⁵ KIRIGIN *et al.* 2006: 19.

¹⁰⁶ BUŠKARIOL 1982: 37; KIRIGIN *et al.* 2006: 14 with earlier references; ČARGO 2021b: 26.



SLIKA 10. Ostaci bedema na gradini Sveti Vid (Izvor: QGIS, obrada: I. Čevid)

FIGURE 10 Remains of fortification walls at the hillfort of Sveti Vid (source: QGIS, processing by I. Čevid)

zračna fotografija iz zbirke Velimira Mratinića snimljena 1943. (sl. 9). Fortifikacije su na južnoj strani brežuljka u diskontinuitetu zbog strmih hridi ispod kojih se pruža zaravan koja je terasirana. Moguće je zamisliti da se ondje nekad protezalo podgrađe koje bi potom bilo devastirano terasiranjem. Na uzvisini danas dominira crkva sv. Vida iz 14. stoljeća, dok se od ostalih tragova arhitekture vidi četvrtasta struktura na jugozapadnom dijelu brežuljka, možda vadište kamena ili nekadašnja cisterna.¹⁰⁷ Buškariol je ustvrdio da bi pokretni nalazi, među ostalim atipična siva polirana keramika s primjesama drobljenog vapnenca, kosti te fragment brusnog kamena, mogli biti srednjovjekovni.¹⁰⁸ Tijekom recentnih terenskih pregleda prepoznati su i željeznodobni, grčki i rimski

tent of the fortifications before their devastation is also confirmed by an aerial photograph from the collection of Velimir Mratinić, taken in 1943 (Fig. 9). On the southern side of the hill the fortifications are discontinuous due to the steep cliffs, below which lies a terraced plateau. It is possible to envisage that a *suburbium* once extended there, later destroyed by terracing. Today the hill is dominated by the Church of Saint Vitus (Sveti Vid), dating to the 14th century, while other visible traces of architecture include a rectangular structure on the south-western part of the hill – perhaps a quarry building or a former cistern.¹⁰⁷ Buškariol noted that the moveable finds – among them atypical grey polished pottery with crushed limestone temper, bones and a fragment of a grinding stone – might be medieval.¹⁰⁸ During recent field surveys, Iron Age,

¹⁰⁷ FISKOVIĆ 1968: 97–98.

¹⁰⁸ BUŠKARIOL 1982: 37.

¹⁰⁷ FISKOVIĆ 1968: 97–98.

¹⁰⁸ BUŠKARIOL 1982: 37.

materijal,¹⁰⁹ dok je 2022. i 2024. ondje sakupljeno nekoliko ulomaka antičke provenijencije, od čega dijagnostički materijal čine ručke amfora. Sveti Vid također pripada gradinama male površine.

VIZUALNA KOMUNIKACIJA GRADINA – DRUŠTVENE I EKONOMSKE REPERKUSIJE

Terenskim pregledom i snimanjem zračnih fotografija cilj je bio provjeriti hipoteze o vizualnim komunikacijama viških gradina. Na južnom je dijelu otoka dominantna pozicija gradina Kopacine koja nadzire akvatorij od rta Smokova do rta Stupišća, uključujući manje otoke Ravnik, Veli Budihovac te hridi Paržanj i Greben.¹¹⁰ Pogled se pruža i na Biševo, a s vrha gradine u daljini je moguće vidjeti zapadni dio Korčule, Sušac i Lastovo. Za pogodnog vremena na obzoru se mogu primijetiti Vela Palagruža, kao i talijanska obala, posebice Monte Gargano. Vizualnoj prepoznatljivosti Kopacina i Taleške uvale s mora nedvojbeno su pridonosile imponantne dimenzije Vele gomile.

Kopacine vizualni kontakt mogu ostvariti i s gradinama Sveti Duh i Sveti Vid.¹¹¹ Međutim, međusobnu komunikaciju Kopacina i Svetog Vida danas nije moguće provjeriti na terenu. Razlog je tome prvenstveno gusta borovina na susjednom brdu prema Svetom Vidu koju je zasadila vojska 50-ih godina 20. stoljeća zbog kamufliranja terena.¹¹² Uz to, ako uračunamo gradinske zidine na Kopacinama koje nisu očuvane u punoj visini, vizualna se komunikacija nameće kao logična. Tako se nazire vizualni sustav koji je povezivao najveću višku gradinu Kopacine

Greek and Roman material was also identified,¹⁰⁹ while in 2022 and 2024 several sherds of ancient provenance were collected there, among which the diagnostic material consists of amphora handles. Sveti Vid likewise is categorised as a small-sized hillfort.

VISUAL COMMUNICATION OF THE HILLFORTS – SOCIAL AND ECONOMIC REPERCUSSIONS

The aim of the field survey and aerial photography was to test hypotheses about the Vis hillforts' visual communication. In the southern part of the island the dominant position is held by the hillfort of Kopacine, which commands the seaway from Cape Smokova to Cape Stupišće, including the smaller islands of Ravnik and Veli Budihovac, and the rocks of Paržanj and Greben.¹¹⁰ The view also extends to Biševo, and from the top of the hillfort the western part of Korčula, Sušac and Lastovo can be seen in the distance. In favourable weather, Vela Palagruža as well as the Italian coast, especially Monte Gargano, are visible on the horizon. The imposing dimensions of Vela Gomila undoubtedly contributed to the visual prominence of Kopacine and Talež Bay from the sea.

Kopacine could also be seen from the hillforts of Sveti Duh and Sveti Vid.¹¹¹ However, the mutual communication between Kopacine and Sveti Vid cannot today be verified in the field. The main reason for this is the dense pine forest on the hill opposite Sveti Vid, planted by the army in the 1950s to camouflage the terrain.¹¹² In addition, if we take into account the hillfort walls at Kopacine, which are not preserved to their full height, visual communication would appear to be a logical assumption. Thus, a visual

¹⁰⁹ KIRIGIN *et al.* 2006: 14; ČARGO 2021b: 26.

¹¹⁰ Otok Budikovac pronalazi se i pod imenom Budihovac. Opće komentare o vidljivosti dali su BUŠKARIOL 1982: 36; KATIĆ 2009: 34.

¹¹¹ Usp. BUŠKARIOL 1982: 37; KIRIGIN *et al.* 2006: 50.

¹¹² Usmeni je izvor Vicko Zorotović, koji je sudjelovao u akcijama pošumljavanja 50-ih godina 20. stoljeća.

¹⁰⁹ KIRIGIN *et al.* 2006: 14; ČARGO 2021b: 26.

¹¹⁰ The island of Budikovac also appears under the name Budihovac. General comments on visibility are provided by BUŠKARIOL 1982: 36; KATIĆ 2009: 34.

¹¹¹ Cf. BUŠKARIOL 1982: 37; KIRIGIN *et al.* 2006: 50.

¹¹² The oral source is Vicko Zorotović, who took part in the afforestation campaigns of the 1950s.



SLIKA 11. *Ostaci prstena gomile iznad Podstrožja* (snimio: V. Udiljak)

FIGURE 11 *Remains of a cairn ring above Podstrožje* (photo by V. Udiljak)

sa Svetim Vidom, dominantnim motrištem za Dracevo, Plisko i Velo polje.¹¹³ S druge strane, gradina Kopacine na Taležu ne može ostvariti vizualnu komunikaciju s motrištem na Štracinama. Između Štracina i Kopacina postoji položaj koji je vrijedan pažnje, što zbog naziva što zbog zemljopisnih okolnosti. Na vrhu brda iznad sela Podstrožje austrijska je vojska podignula omanju bitnicu nad velikom sipinom kamenja. Na temelju ostatka prstena od kamenih blokova, terenskim je pregledom utvrđena moguća gomila (sl. 11). Njezinu devastaciju koju je započela austrijska vojska dovršila je Jugoslavenska narodna armija.¹¹⁴ Iako prostor nije bogat keramičkim nalazima, dodatna indikacija o glavici kao prapovijesnom motrištu bila bi blizina ostalih gomila koje su danas uklopljene u sustav polja. S brda iznad Podstrožja daje se ostvariti vizualna komunikacija sa Štracinama, Kopacinama, Svetim Vidom i Svetim Duhom, tako da bi ova glavica mo-

system can be discerned linking the largest hillfort on Vis, Kopacine, with Sveti Vid, the dominant lookout for Dracevo, Plisko and Velo Polje.¹¹³ On the other hand, the hillfort of Kopacine on Talež cannot establish visual communication with the lookout at Štracine. Between Štracine and Kopacine there is a position worthy of attention, both for its name and its geographical circumstances. On the top of the hill above the village of Podstrožje the Austrian army built a small battery above a large scree slope. On the basis of a surviving ring of stone blocks, the field survey identified a possible cairn (Fig. 11). Its devastation, begun by the Austrian army, was completed by the Yugoslav People's Army.¹¹⁴ Although the area is not rich in ceramic finds, an additional indication of the headland as a prehistoric lookout would be the proximity of other cairns, today incorporated into the field system. From the hill above Podstrožje, visual communication can be established with Štracine, Kopacine, Sveti Vid and Sveti Duh, so this headland may have served

¹¹³ KIRIGIN *et al.* 2006: 14.

¹¹⁴ Šire područje oko današnjeg Podstrožja (lokalno Postrožjo) na vojnim se kartama ponekad naziva i Nadpostranje. O bitnici Podstrožje više u FISKOVIĆ 1968: 174.

¹¹³ KIRIGIN *et al.* 2006: 14.

¹¹⁴ The wider area around present-day Podstrožje (locally Postrožjo) is sometimes referred to on military maps as Nadpostranje. For more on the Podstrožje battery, see FISKOVIĆ 1968: 174.

gla biti temeljna spona između Štracina i najveće otočne gradine Kopacine.

Literatura navodi da Sveti Duh ima izvanrednu komunikaciju s većinom viških kota, uz napomenu da lokalno stanovništvo jasno vidi Monte Gargano više od 50 % dana u godini.¹¹⁵ Ova je pozicija nedvojbeno bila važna za nadzor Velog i Dracevog polja, zapadnog i južnog viškog akvatorija, obližnjeg arhipelaga, a zajedno s Velim Humom idealno je mjesto za motrenje pučine, pučinskih otoka i udaljene zapadne obale Jadrana.

Zračne fotografije potvrđuju zaključke iz starije literature o prapovijesnom sustavu vizualne komunikacije gradina na jugu Visa. Osim toga, dvije se kategorije nameću kao ključne – nadzor plodnih površina i plovidbenih ruta. Budući da se najveća krška polja nalaze u središtu južnog dijela otoka, logično je očekivati veću koncentraciju naseobinskih i motrišnih položaja uz važan prirodni resurs. Vrijednost prehrambenih namirnica, ali i ograničeni kapaciteti žitarica koje su mogle podariti južne viške poljoprivredne površine¹¹⁶ možda su jedan od razloga fortificiranja uzvišenja s manjim površinama. Takve su pozicije, napose Sveti Vid, mogle poslužiti za nadzor, svakodnevne poljodjelske aktivnosti, ali i prikupljanje i pohranu uroda. U slučaju pomorske navale na južnu stranu Visa, pozicije poput Svetog Vida ili Svetog Duha mogle su preuzeti ulogu refugija, što bi bio dodatni argument

as the key link between Štracine and Kopacine, the largest hillfort on the island.

The literature states that Sveti Duh has excellent communication with most of the Vis hilltops, noting that the local population can clearly see Monte Gargano on more than 50 % of the days of the year.¹¹⁵ This position was undoubtedly important for the control of Velo and Dracevo Polje, the western and southern waters of Vis, and the nearby archipelago, and together with Veli Hum it was an ideal place for monitoring the open sea, the offshore islands and the distant western coast of the Adriatic.

Aerial photographs confirm the conclusions of earlier literature regarding the prehistoric system of visual communication among the hillforts in southern Vis. In addition, two categories emerge as key: the control of fertile areas and of seafaring routes. Since the largest karst fields are located in the centre of the southern part of the island, a greater concentration of settlement and lookout positions near this important natural resource is to be expected. The value of foodstuffs, but also the limited quantity of cereals that the southern Vis agricultural fields could provide,¹¹⁶ may have been one of the reasons for fortifying elevations of smaller area. Such positions, especially Sveti Vid, could have served for supervision and day-to-day agricultural activities, but also for the collection and storage of harvests. In the event of a maritime incursion on the southern side of Vis, positions such as Sveti Vid or Sveti Duh could have assumed the role of *refugia*, which would further support

¹¹⁵ BUŠKARIOL 1982: 34. Odlične vizualne predispozicije istaknute su i u KIRIGIN *et al.* 2006: 19.

¹¹⁶ Tvrdnja se zasniva na procjenama kapaciteta zemljišta učinjenima na temelju modela za grčke polise. Ako bi se uzgajalo isključivo žito, oko 6 km² moglo bi, prema višim procjenama, prehraniti ugrubo od 500 do 1000 ljudi, dok bi cijeli otočni kapaciteti od oko 10 km² uzdržali cca od 800 do 1600 ljudi (BUDIĆ 2022: 307–309). Okolnosti grčke poljoprivrede paušalno su usporedive s prapovijesnima. Komparativni su materijal i podaci o poljoprivrednim uvjetima ranoga novog vijeka. Iako je zemljoradnja bila osnovna aktivnost otočnog pučanstva, podaci ukazuju da je uroda na otoku tijekom 15. stoljeća bilo dostatno za samo dva mjeseca, a krajem 18. stoljeća jedva za tri. Nizak trend nastavio se i tijekom 19. stoljeća (PERIČIĆ 1999: 70–72).

¹¹⁵ BUŠKARIOL 1982: 34. The excellent visual advantages are also emphasised in KIRIGIN *et al.* 2006: 19.

¹¹⁶ The claim is based on assessments of land capacity made using models for Greek *poleis*. If grain alone had been cultivated, around 6 km² could, according to generous estimates, have fed roughly 500 to 1,000 people, while the entire island's capacity of about 10 km² could have sustained some 800 to 1,600 people (BUDIĆ 2022: 307–309). The conditions of Greek agriculture are only broadly comparable with those of prehistory. Comparative material also includes data on agricultural conditions in the early modern period. Although farming was the basic activity of the island population, data indicate that in the 15th century the island's harvest was sufficient for only two months, and by the late 18th century barely for three. This low trend continued throughout the 19th century (PERIČIĆ 1999: 70–72).



SLIKA 12. Aerofotografija platoa gradine Sveti Vid i Dracevog polja (snimio: J. Triplat)

FIGURE 12 Aerial photograph of the plateau of the Sveti Vid hillfort and Dracevo Polje (photo by J. Triplat)

za svrhu skladištenja prehrambenih namirnica. S obzirom na dominantno naselje na Kopacinama, Sveti Duh i Sveti Vid daju se interpretirati i kao svojevrsna satelitska naselja, bilo sezonskog bilo cjelogodišnjeg karaktera. Nažalost, devastacija potencijalnih podgrađa zbog terasiranja sužava interpretacijske mogućnosti. To se posebno ističe na primjeru podgrađa Svetog Vida koje je terasirano radi sadnje vinograda, pa ako je i postojalo, zauvijek je devastirano zahvatima suhozidne gradnje *pristava* koje su danas vidljive.

Iz teorijske perspektive sve bi tri pozicije pripadale tzv. naseljima zemljoradničkog tipa (engl. *agro-town*). To podrazumijeva uključenost većine stanovništva u poljoprivredne radove. Jedno je od obilježja pripadnost obližnjeg zemljišta arealu od 5 km, što je udaljenost koju pojedinci mogu dnevno prijeći kako bi obavili nužan posao, a navečer se vratili kući.¹¹⁷ Sveti Vid pritom je idealna lokacija, jer unutar 5 km zračne udaljenosti obuhvaća cijelo Dracevo, Plisko

the case regarding the storage of foodstuffs. Given the dominant settlement at Kopacine, Sveti Duh and Sveti Vid can also be interpreted as a kind of satellite settlements, whether seasonal or permanent. Unfortunately, the devastation of potential *suburbia* sites through terracing narrows the interpretative possibilities. This is particularly evident in the case of the *suburbium* of Sveti Vid, which was terraced for the planting of vineyards; if it ever existed, it was permanently destroyed by the construction of dry-stone vineyard enclosures still visible today.

From a theoretical perspective, all three positions would have been agrarian-type settlements (agro-towns). This implies the involvement of most of the population in agricultural work. One of their features is the inclusion of nearby land within a radius of 5 km – the distance individuals can cover daily in order to complete the necessary work and return home in the evening.¹¹⁷ Sveti Vid is in this respect an ideal location, since within a 5 km radius it encompasses the whole of Dracevo, Plisko and Velo Polje (Fig. 12), and also within reach are Molo and Velo Jubišće, Molo

¹¹⁷ DELANO-SMITH 1979: 37–39; LENTJES 2016: 89.

¹¹⁷ DELANO-SMITH 1979: 37–39; LENTJES 2016: 89.

i Velo polje (sl. 12), a u dohvat su također Molo i Velo Jubišće, Molo i Velo Voščica, Tihobraće te Molo i Velo Zlo polje. Sveti Duh pak vizualno obuhvaća cijelo Dracevo, a Kopacine i Dracevo polje. Najbliže su poljoprivredne površine Grodca Donja i Gornja Pojica.

Jednako kao Kopacine, Grodac i Štracine, Sveti Duh nudi izvanredne predispozicije za motrenje pomorskih ruta. Taj je čimbenik bitan zbog iskorištavanja morskih resursa, ali i nadzora pomorske trgovine. Otok je bio vitalna točka na ruti koja je preko dalmatinskih otoka spajala središnju Dalmaciju s Monte Garganom. Osim poprečne jadranske rute, zemljopisne okolnosti nameću i plovidbu uzdužnim pravcem od jonske Korkire do Spine, s Visom kao pogodnom usputnom postajom.¹¹⁸ Osim moguće preprodaje uvezene robe, važnost otoka za pomorce ogleda se i u ponudi elementarnih potreština, poput snabdijevanja pitkom vodom i osnovnim prehrabnim namirnicama. Pritom bi Kopacine i Grodac imali prednost, jer su obje pozicije nadzirale vlastite izvore, a isto je nudila i Viška luka.

Zbog povoljnosti sidrišta, predlaže se da je i ondje možda postojalo urođeničko naselje, a tri su najizglednije pozicije: Prirovo, isejska Gradina i brdo Sveti Andrija.¹¹⁹ Međutim, trenutačno nema pouzdanih arheoloških potvrda za naselje koje bi istodobno egzistiralo s ostalim željeznodobnim zajednicama na otoku. Početkom 20. stoljeća arheolog amater Nikoleta Dojmi di Delupis na vrhu brda Bratošovac istražio je jednu gomilu s tri komore čiji su ostaci vidljivi i danas, ali nije pronašao gotovo nikakve nalaze niti uočio potencijalne ostatke gradinskog naselja.¹²⁰ Danas gusta makija ne dopušta sustavan pregled terena, dok je gradnja teleoperaterskog centra prenamijenjenog u

and Velo Voščica, Tihobraće, and Molo and Velo Zlo Polje. Sveti Duh, on the other hand, visually encompasses the whole of Dracevo, while Kopacine additionally commands Dracevo Polje. The nearest agricultural fields to Grodac are Donja and Gornja Pojica.

Just like Kopacine, Grodac and Štracine, Sveti Duh offers excellent conditions for monitoring maritime routes. This factor was important both for the exploitation of marine resources and for the control of maritime trade. The island was a vital point on the route that linked central Dalmatia with Monte Gargano via the Dalmatian islands. In addition to this transverse Adriatic route, geographical circumstances also dictated navigation along the longitudinal axis from Ionian Corcyra to Spina, with Vis serving as a convenient stopover.¹¹⁸ Apart from the possible resale of imported goods, the island's importance to seafarers also lay in the supply of basic necessities, such as fresh water and staple foodstuffs. In this respect, Kopacine and Grodac would have had an advantage, since both positions controlled their own water sources, and the same was offered by the port of Vis.

Because of the favourable anchorage, it has been suggested that an indigenous settlement may also have existed there, with the three most likely positions being Prirovo, the Issaeian Gradina hillfort, and Mount Sveti Andrija.¹¹⁹ However, there is currently no reliable archaeological evidence for a settlement that coexisted with the other Iron Age communities on the island. At the beginning of the 20th century, the amateur archaeologist Nikoleta Dojmi di Delupis investigated a cairn with three chambers on the top of Mount Bratošovac, the remains of which are still visible today, but he found virtually no artefacts and did not identify any potential remains of a hillfort settlement.¹²⁰ Today, dense maquis prevents a systematic survey of the terrain, while the construction of a telecommunications centre,

¹¹⁸ KIRIGIN *et al.* 2009: 149, sl. 7.

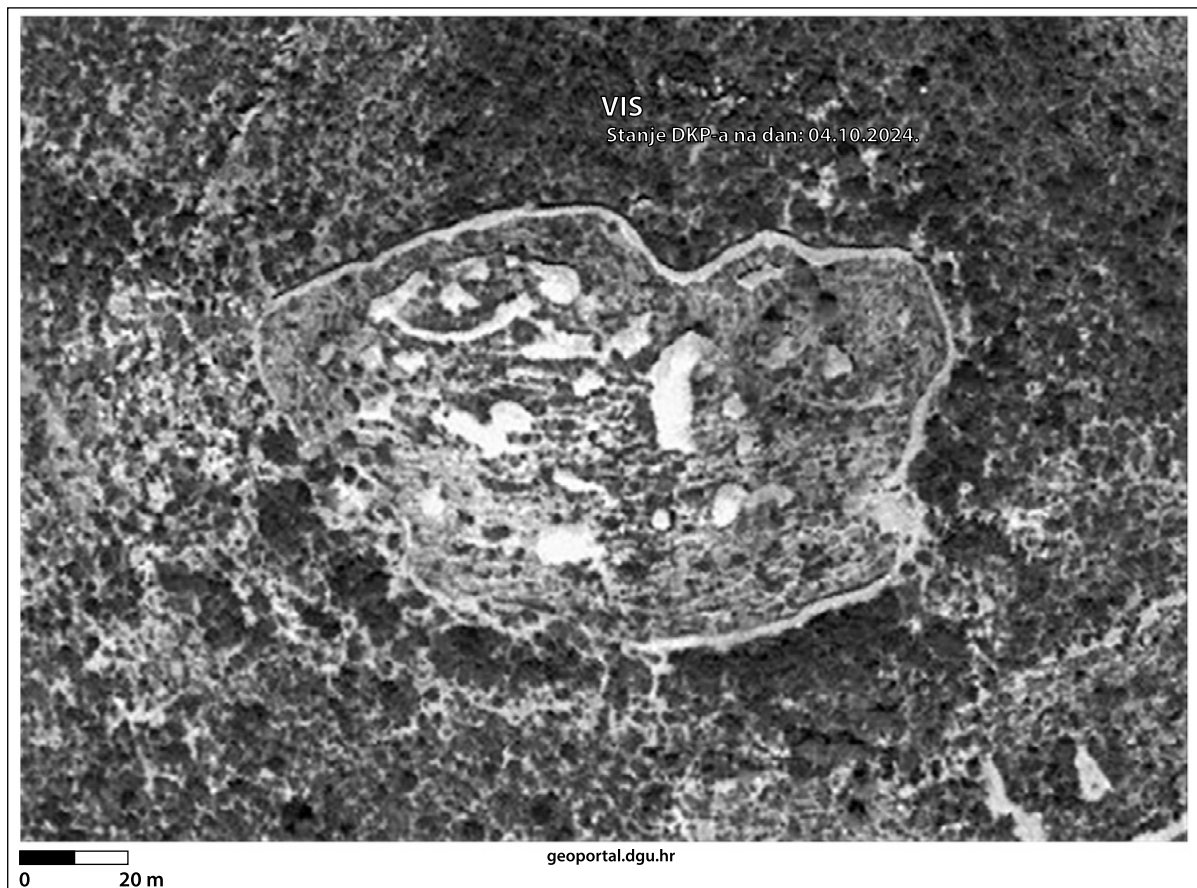
¹¹⁹ KATIĆ 2009: 55–58.

¹²⁰ KIRIGIN 1999: 416.

¹¹⁸ KIRIGIN *et al.* 2009: 149, Fig. 7.

¹¹⁹ KATIĆ 2009: 55–58.

¹²⁰ KIRIGIN 1999: 416.



SLIKA 13. Aerofotografija Gracišća iz 1968. (izvor: Geoportal DGU)

FIGURE 13 Aerial photograph of Gracišća from 1968 (source: Geoportal DGU)

planinarski dom dodatno devastirala lokalitet. Osim toga, literatura ističe i miniranost ovog položaja.¹²¹

Otegotna je okolnost i potencijalna devastacija Prirova i isejske Gradine tijekom grčke urbanizacije. Na to vjerojatno aludiraju ulomci pronađeni iznad rimskih terma tijekom arheoloških istraživanja 2022. koja su provodili Arheološki muzej u Splitu i Hrvatski restauratorski zavod. Tri ulomka gradinske keramike pronađena su u škrapama uz živu stijenu,¹²² a sloj se interpretira kao ispuna kojom je niveliran teren za postavljanje kamenih blokova ulice predrimske Ise. Ovi bi nalazi mogli osnažiti stariju hipotezu o predgrčkom naselju na isejskoj Gradi-

later repurposed as a mountain lodge, has further damaged the site. In addition, the literature also highlights the fact that this position was mined.¹²¹

A further complicating factor is the potential devastation of Prirovo and the Issaeian Gradina during Greek urbanisation. This is likely alluded to by the fragments found above the Roman baths during the 2022 archaeological excavations carried out by the Archaeological Museum in Split and the Croatian Conservation Institute. Three fragments of hillfort pottery were discovered in crevices along the bedrock,¹²² and the layer is interpreted as fill used to level the terrain for the placement of stone blocks in a street of pre-Roman Issa. These finds may strengthen the earlier hypothesis of a pre-Greek settlement

¹²¹ KATIĆ 2009: 56, bilj. 9.

¹²² Zahvaljujemo voditeljima istraživanja lokaliteta Terme sjever Borisu Čargu i Davidu Bergantu koji su dopustili uvid u pronađeni materijal.

¹²¹ KATIĆ 2009: 56, n. 9.

¹²² We would like to thank the leaders of the excavation campaigns at the *Terme sjever* (Thermae North) site, Boris Čargo and David Bergant, for allowing access to the recovered material.

ni.¹²³ Preciznija kronologija ostaje nejasna, a među moguće indikatore ubrajamo tragove brončanodobnih podnica na Prirovu,¹²⁴ ali i korinthske bombile pronađene između rimskih terma i Martvila. Ove grčke posude pronađene su pri gradnji vojne zgrade 50-ih godina prošlog stoljeća. Mladen Nikolanci zbog očuvanosti predmeta pretpostavio je da su bili dio grobnog konteksta,¹²⁵ no samo je ugrubo moguće predložiti da su pripadali grobu urođeničkog moćnika.¹²⁶

Dol koji se proteže od zapada Viške luke prema unutrašnjosti i Vinogradišće sa sjeverne strane Gradine bila bi najveća polja potencijalnoga prapovijesnog naselja u Viškoj luci. Na zapadnom rubu Dola smještena je uzvisina zaravnate glavice Gracišće s koje se pruža pogled nad čitavim poljem. Na aerofotografiji iz 1968. vidljivi su mogući ostaci bedema koji opasava plato na vrhu (sl. 13). Terenskim pregledom nisu pronađeni ostaci pokretnoga arheološkog materijala pa jedino što insinuirá na postojanje gradine jesu toponim, položaj i ostaci bedema. Budući da je prostor potpuno zarastao u gustu makiju i borovu šumu te je gotovo neprohodan, jedino će sonđazna istraživanja u budućnosti moći ponuditi konkretniji odgovor.

Motrište na Štracinama nedvojbeno je pripadalo komunikacijskom sustavu sjeveroistočnog dijela otoka, jer se odande pruža dobar pogled na ulaz u Višku luku i otočić Host. Dobra se vizualna komunikacija može uspostaviti s položajem Terjun u viškoj uvali. Na toj glavici početkom 19. stoljeća izgrađena je engleska utvrda. Obilaskom terena prikupljena su četiri ulomka keramike koju bismo zbog primjesa u sastavu mogli odrediti kao prapovijesnu. Nije nemoguće da je navedeni položaj bio motrište i u vrijeme grčke dominacije uvalom, jer izravno komunicira s vrhom isejske Gradine, nadzirući ulaz u luku.

¹²³ NOVAK 1966: 123.

¹²⁴ KATIĆ 2009: 54–55; ČARGO 2021b: 24

¹²⁵ NIKOLANCI 1977: 149–153.

¹²⁶ UGARKOVIĆ 2019: 17.

at the Issaeon Gradina.¹²³ A more precise chronology remains unclear, with possible indicators including traces of Bronze Age floors at Prirovo¹²⁴ and Corinthian *bombilia* found between the Roman baths and Martvilo. These Greek vessels were uncovered during the construction of a military building in the 1950s. Mladen Nikolanci, noting their good state of preservation, suggested that they may have formed part of a grave context,¹²⁵ but it cannot be proposed with any certainty that they belonged to the grave of an indigenous ruler.¹²⁶

The Dol valley, stretching from the western side of the port of Vis towards the hinterland, together with Vinogradišće on the northern side of Gradina, would have formed the largest fields of a potential prehistoric settlement at the port of Vis. On its western edge lies the flattened hilltop of Gracišće, offering a view across the entire field. An aerial photograph from 1968 shows possible remains of a wall encircling the plateau at the summit (Fig. 13). No portable archaeological material was found during the field survey, so the only indications of a hillfort are the toponym, the location and the traces of a wall. As the area is now completely overgrown with dense maquis and pine forest and is nearly impassable, only trial excavations in the future will be able to provide a more concrete answer.

The lookout at Štracine undoubtedly formed part of the communication system of the north-eastern part of the island, since it offers a good view of the entrance to the port of Vis and the islet of Host. Clear visual communication could also be established with the position of Terjun in the bay of Vis, where a British fort was built at the beginning of the 19th century. During the field survey, four pottery sherds were collected which, based on the inclusions in their composition, can be identified as prehistoric. It is not impossible that this position also served as a lookout during the period of Greek control

¹²³ NOVAK 1966: 123.

¹²⁴ KATIĆ 2009: 54–55; ČARGO 2021b: 24.

¹²⁵ NIKOLANCI 1977: 149–153.

¹²⁶ UGARKOVIĆ 2019: 17.

Sjeverni je dio viškog akvatorija nadzirela pak zajednica na Grodca. Zbog okolnih brda, ta pozicija nije mogla ostvariti vizualnu komunikaciju s najvišim među otočnim motrištima, Svetim Duhom. Ipak, valja promisliti i o mogućnosti komunikacije drugim medijima. Dovoljno velikom vatrom mogla se vršiti signalizacija. O tome svjedoče antički izvori (npr. Polyb. X, 42), a u suvremenoj se literaturi spominje i kao način komunikacije gradina na otoku Hvaru i između susjednih otoka.¹²⁷ Pri kopanju rovova za bunkere na Kopacinama 60-ih godina 20. stoljeća pronađen je sloj gareži koji se protezao gotovo 80 cm u dubinu. Budući da struka nije bila prisutna pri devastaciji, već je informacija prikupljena svjedočanstvom sudionika izgradnje rovova, uz dozu opreza mogli bismo ovaj sloj pripisati sustavu signalizacije vatrom.¹²⁸ Ne treba podcijeniti i zanemariti mogućnost signalizacije puhanjem u primitivna aerofona glazbala, kao što su životinjski rogovi. Dakako, signalizacija zvukom uvelike ovisi o smjeru vjetra pa može funkcionirati samo ako vjetar ide u smjeru kojim bi zvuk trebao putovati ili po bonaci.

ZAKLJUČAK

Terenskim pregledom viškog Grodca utvrđene su nove granice omeđenoga gradinskog prostora, znatno različite od dosadašnjih u literaturi. Sudeći prema prikupljenom keramičkom repertoaru, može se zaključiti da je tamošnja zajednica živjela kroz željezno doba, a uvoz amfora, pitosa, crnopremazane i crvenofiguralne keramike te rimskog posuđa sugerira da je naselje bilo uključeno u aktivnu razmjenu s Grcima i Rimljanima tijekom mlađega željeznog doba. Samo sustavna istra-

of the bay, as it directly communicated with the summit of the Issa Gradina, overlooking the entrance to the harbour.

The northern part of the waters off Vis, however, was monitored by the community at Grodac. Because of the surrounding hills, that position could not maintain visual communication with the highest of the island's lookouts, Sveti Duh. Nevertheless, the possibility of communication by other means should also be considered. Signals could have been transmitted using a sufficiently large fire. This is attested in ancient sources (e.g. Polyb. X, 42), and modern literature also mentions it as a form of communication between hillforts on the island of Hvar and between neighbouring islands.¹²⁷ When trenches for bunkers were dug at Kopacine in the 1960s, a layer of soot almost 80 centimetres deep was discovered. Since no specialists were present during its destruction, and the information was instead obtained from the testimony of participants in the construction of the trenches, this layer could tentatively be attributed to a fire-based signalling system.¹²⁸ Nor should the possibility of signalling by blowing into primitive aerophonic instruments, such as animal horns, be underestimated or disregarded. Of course, sound signalling largely depends on wind direction and can only work if the wind carries the sound in the required direction, or in calm conditions.

CONCLUSION

The field survey of Grodac on Vis established new boundaries of the enclosed hillfort area, which differ significantly from those previously recorded in the literature. Judging by the collected ceramic assemblage, it can be concluded that a local community lived there during the Iron Age, while the import of amphorae, pithoi, black-glazed and red-figure

¹²⁷ O signalizaciji vatrom i širokoj obrambenoj mreži istočnog Jadrana pisao je ZANINOVIĆ (2012: 24).

¹²⁸ Zahvaljujemo Borisu Čargu i Mitru Jaloviju na ovoj dragocjenoj informaciji.

¹²⁷ ZANINOVIĆ (2012: 24) has written about fire signalling and the wide defensive network of the eastern Adriatic.

¹²⁸ We would like to thank Boris Čargo and Mitar Jalović for this valuable information.

živanja imaju potencijal doprinijeti spoznajama o vremenu kad se na Grodču više nije živjelo.

Pregled lokaliteta na Štracinama donio je najveću promjenu s obzirom na postojeće podatke. Osim velike gomile koja dominira kotom, nismo uočili tragove fortifikacijske arhitekture opisane u starijoj literaturi. Uzak i malen prostor na uzvišenju, nedostatak izvora pitke vode te udaljenost od plodnih površina sugeriraju da Štracine valja promatrati kao eventualno motrište s dobrim vizualnim predispozicijama, ali ne i kao gradinu na kojoj se trajno živjelo. Sporadični nalazi prapovijesne keramike oko kamenih razvalina na sjeveroistočnom dijelu poluotoka možda ukazuju na ostatke porušene nekropole. U odronu kame-nja koji je nastao kao posljedica pljačkanja središnje grobne komore na velikoj gomili pronađen je vrijedan ulomak stamnoidne pikside, datiran u 3. st. pr. Kr., dok je na padinama prikupljen ulomak tipa Gnathia ili crno premazane keramike. Time je nadopunjen kronološki okvir lokaliteta koji je do sada bio ograničen samo na predgrčki period. Zbog poteškoća pri preciznijem datiranju brončanodobne i željeznodobne keramike istočnog Jadrana, prapovijesni je materijal većinom ugrubo određen u željezno doba.

Obilaskom gradinskih lokaliteta Kopacine, Sveti Duh i Sveti Vid te Vele gomile i Krušovice djelomično je upotpunjeno kronološko poznavanje nalazišta. Prvenstveni je cilj bio ovjeriti komunikacijski sustav prapovijesnih položaja. Uz međusobne vizualne veze, evidentna je i usmjerenost na nadzor krških polja i plovidbenih ruta. Nema sumnje da su plodna polja na južnoj strani Visa bila važan prirodni resurs, doduše skromnijega proizvodnog potencijala zbog ograničenih obradivih površina koje otok nudi. Raspršenost daunijske keramike po viškim gradinskim položajima sugerira da su prapovijesne zajednice bile usmjerene na komunikaciju s južnom Italijom, vjerojatno ne samo zbog uvoza keramike te ostalih svakodnevnih ili luksuznih dobara, već primarno

pottery, as well as Roman tableware, suggests that the settlement was involved in active exchange with the Greeks and Romans during the Late Iron Age. Only systematic excavations have the potential to shed more light on the point when Grodac ceased to be inhabited.

The survey of the site at Štracine brought about the most significant change compared to the existing data. Apart from the large cairn that dominates the elevation, we did not observe traces of fortification architecture described in earlier literature. The narrow and small area on the elevation, the absence of a source of fresh water, and the distance from fertile fields suggest that Štracine should be viewed as a possible lookout point with good visual predispositions, but not as a hillfort that was permanently inhabited. Sporadic finds of prehistoric pottery around the stone ruins on the north-eastern part of the peninsula may point to the remains of a destroyed necropolis. In the rockfall caused by the looting of the central burial chamber of the large tumulus, a valuable fragment of a stamnoid pyxis, dated to the 3rd century BC, was discovered, while on the slopes a fragment of Gnathia or black-glazed pottery was collected. This has supplemented the chronological framework of the site, which until now has been limited solely to the pre-Greek period. Due to the difficulties in more precise dating of Bronze Age and Iron Age pottery in the eastern Adriatic, most of the prehistoric material has been broadly assigned to the Iron Age.

The survey of the hillfort sites of Kopacine, Sveti Duh and Sveti Vid, as well as Vela Gomila and Krušovice, has partially refined the chronological understanding of these sites. The primary objective was to verify the communication system of prehistoric locations. In addition to the intervisibility of sites, there is clear evidence of an orientation towards the control of karst fields and maritime routes. There is no doubt that the fertile fields on the southern side of Vis were an important natural resource, albeit with limited productive potential due to the restricted arable land available on the island. The dispersal of Daunian pottery across Vis hillfort sites sug-

zbog prehrambenih, a ponajprije žitnih zaliha. U prapovijesno doba Daunija je bila znamenita po izvozu žita,¹²⁹ a unatoč trenutno skromnijim tragovima daunijske keramike na Visu,¹³⁰ njihova raspršenost diljem Dalmacije i istočne obale Jadrana sugerira da je otok bio važna postaja uz koju je kolala italska roba. Prapovijesni su stanovnici otoka Visa zauzvrat mogli prodavati raznolike morske resurse kojima obiluju vode otočnog arhipelaga. Pritom je razumljivo i usmjerenje na nadzor pomorskih ruta. Kopacine, Sveti Duh, Štracine, Terjun i Grodac imali su povoljne predispozicije za kontrolu plovidbe, bilo na ruti koja je povezivala dalmatinsko kopno s nasuprotnom italskom obalom bilo na uzdužnom pravcu koji je spajao Jonsko more sa sjevernim Jadranom. Vis se ističe i kao postaja za opskrbu elementarnim potrepštinama, osobito pitkom vodom koju su mornari mogli mijenjati za dobra kod Kopacina, Grodca ili u viškoj uvali. Sljedeća istraživanja bit će usmjerena na ključni problem o kojem još nemamo dovoljno spoznaja – pitanje koegzistencije ili raznovremenosti života na spomenutim položajima.

Zahvale

Najljepše zahvaljujemo kolegicama Alberti Areni i Asji Tonc te kolegama Vedranu Barbariću i Emilu Podrugu na iznimno korisnim savjetima i sugestijama povezanim s prapovijesnim i antičkim keramičkim nalazima. Zahvaljujemo Borisu Čargu na podacima iz neobjavljenih istraživanja na Visu.

gests that prehistoric communities were oriented towards communication with southern Italy, probably not only for the import of pottery and other every day or luxury goods, but primarily for food supplies, above all grain reserves. In prehistoric times, Daunian was renowned for its grain exports,¹²⁹ and despite the currently modest traces of Daunian pottery on Vis,¹³⁰ its dispersal across Dalmatia and the eastern Adriatic coast suggests that the island was an important station through which Italic goods circulated. In return, the prehistoric inhabitants of Vis could have traded various marine resources abundant in the island's waters. This also explains the orientation towards the control of maritime routes. Kopacine, Sveti Duh, Štracine, Terjun and Grodac had favourable conditions for overseeing navigation, whether along the route connecting the Dalmatian mainland with the opposite Italic coast or along the longitudinal route linking the Ionian Sea with the northern Adriatic. Vis also stood out as a station for the supply of basic necessities, particularly fresh water, which sailors could exchange for goods at Kopacine, Grodac or in the Bay of Vis. Future research will focus on a key issue for which we still lack sufficient knowledge – the question of coexistence or chronological diversity of life at the mentioned sites.

Acknowledgements

We would like to express our sincere gratitude to our colleagues Alberta Arena and Asja Tonc, as well as to Vedran Barbarić and Emil Podrug, for their extremely valuable advice and suggestions regarding the prehistoric and ancient pottery finds. We are also grateful to Boris Čargo for providing data from unpublished research on Vis.

*Translation and proof-reading:
ETNOtrend d.o.o.*

¹²⁹ D'ERCOLE 2002: 311–315.

¹³⁰ Primjerice, iz nekoliko probnih sonda na Kopacinama objelodanjeno je šest ulomaka daunijske keramike koji se datiraju od 8. do 6. st. pr. Kr. Usp. KIRIGIN *et al.* 2024: 93.

¹²⁹ D'ERCOLE 2002: 311–315.

¹³⁰ For example, several trial trenches at Kopacine yielded six fragments of Daunian pottery, dated to between the 8th and 6th centuries BC. Cf. KIRIGIN *et al.* 2024: 93.

LITERATURA / BIBLIOGRAPHY

- BARBARIĆ, V. 2011, *Tipologija lončarije iz kasnoga brončanoga i željeznoga doba s područja Dalmacije*, neobjavljena disertacija / unpublished PhD thesis, Sveučilište u Zagrebu, Zagreb: Filozofski fakultet u Zagrebu.
- BATOVIĆ, Š. 1973, Prapovijesni ostaci na zadarskom otočju, *Diadora*, 6, 5–165.
- BILIČIĆ, V. 1994, Brdo Krušovica na otoku Visu, *Hrvatska zora*, 11, 4–9.
- BUDIĆ F. 2022, *Zemljopisne, ekonomske i društvene okolnosti grčkog interesa za istočnu obalu Jadrana*, neobjavljena disertacija / unpublished PhD thesis, Sveučilište u Zagrebu, Zagreb: Filozofski fakultet u Zagrebu.
- BUDIĆ, F. 2018, Rasprava o podrijetlu proročkih riječi i povijesnom kontekstu osnivanja Fara / A discourse on the origin of the oracles and the historical context surrounding the establishment of Pharos, *Vjesnik za arheologiju i historiju dalmatinsku*, 111, 99–137.
- BURTON, R. F. 1879, A Visit to Lissa and Pelagosa, *Journal of the Royal Geographical Society*, 49, 151–190.
- BUŠKARIOL F. 1982, *Stanje istraženosti protohistorijskih lokaliteta otoka Visa*, neobjavljeni diplomski rad / unpublished graduation thesis, Sveučilište u Zagrebu, Zagreb: Filozofski fakultet u Zagrebu.
- CAMBI, N., KIRIGIN, B., MARIN, E. 1981, Zaštitna arheološka istraživanja helenističke nekropole Isse (1976. i 1979.) – Preliminarni izvještaj, *Vjesnik za arheologiju i historiju dalmatinsku*, 75, 63–84.
- ČARGO, B. 2021a, Pregled povijesti arheoloških istraživanja na otoku Visu, u/in: *Vis-à-Vis 200: arheološka baština otoka Visa*, Ivčević, S. (ur./ed.), Split: Arheološki muzej u Splitu, 16–21.
- ČARGO, B. 2021b, Pregled pretpovijesti otoka Visa, u/in: *Vis-à-Vis 200: arheološka baština otoka Visa*, Ivčević, S. (ur./ed.), Split: Arheološki muzej u Splitu, 22–35.
- ČONDIĆ, N., VUKOVIĆ, M. 2017, *U temeljima grada: iz arheoloških slojeva liburnskoga Zadra / In the city's foundations: the archaeological layers of the Liburnian Zadar*, Katalozi i monografije 27, Zadar: Arheološki muzej u Zadru.
- DELANO-SMITH, C. 1979, *Western Mediterranean Europe: A Historical Geography of Italy, Spain, and Southern France Since the Neolithic*, London: Academic Press.
- D'ERCOLE, M. C. 2002, *Importuosa Italiae Litora. Paysage et échanges dans l'Adriatique méridionale à l'époque archaïque*, Napoli: Centre Jean Bérard.
- DIODORUS OF SICILY, 1954, *Bibliotheca historica*, vol. VI, books XIV – XV, Oldfather, C. H. (trans.), Page, T. E., Capps, E., Post, L. A., Rouse, W. H. D., Warmington, E. H. (eds.), Loeb Classical Library 399, Cambridge MA; London: Harvard University Press.
- DUBOLNIĆ, M. 2006, Prapovijesna nalazišta na području Starigrada Paklenice, *Radovi Zavoda za povijesne znanosti HAZU u Zadru*, 48, 1–55.
- FABER, A., NIKOLANCI, M. 1985, Škrip na otoku Braču (naselje i spomenici prethistorijskog i antičkog doba), *Prilozi Instituta za arheologiju u Zagrebu*, 2, 1–38.
- FISKOVIĆ, C. 1968, Spomenici otoka Visa od 9. do 19. stoljeća, *Prilozi povijesti umjetnosti u Dalmaciji*, 17, 61–153.
- FORENBAHER, S. 2018, *Special Place, Interesting Times: The island of Palagruža and transitional periods in Adriatic prehistory*, Oxford: Archaeopress Archaeology.
- FORENBAHER, S., GAFFNEY, V., HAYES, J., KAISER, T., KIRIGIN, B., LEACH P., VUJNOVIĆ, N. 1994, Hvar – Vis – Palagruža 1992–1993. A Preliminary Report of the Adriatic Islands Project (Contact, Commerce and Colonisation 6000 BC–600 AD), *Vjesnik za arheolo-*

- giju i historiju dalmatinsku*, 86, 13–52.
- FORENBAHER, S., VRANJICAN, N. 1985, Vaganačka pećina, *Opuscula Archaeologica*, 10, 1–21.
- GAFFNEY, V., ČAČE, S., HAYES, J., KIRIGIN, B., LEACH, P., VUJNOVIĆ, N. 2002, Secret histories; the pre-colonial context for Greek settlement of the central Adriatic islands, u/in: *Grčki utjecaj na istočnoj obali Jadrana – Zbornik radova sa znanstvenog skupa održanog 24. do 26. rujna 1998. godine u Splitu*, Cambi, N., Čače, S., Kirigin, B. (ur./eds.), Split: Književni krug, 25–50.
- JOVANOVIĆ, J. 2021, Pogrebni običaji u helenističkoj Isi, u/in: *Vis-à-Vis 200: arheološka baština otoka Visa*, Ivčević, S. (ur./ed.), Split: Arheološki muzej u Splitu, 104–145.
- KAISER, T., FORENBAHER, S. 2002, *Krajicina spilja i brončano doba otoka Visa*, *Opuscula Archaeologica*, 26, 99–110.
- KATIĆ, M. 2009, *Urbanistički i kulturni profil antičke Isse*, neobjavljena disertacija / unpublished PhD thesis, Sveučilište u Zadru, Zadar: Filozofski fakultet.
- KIRIGIN, B. 1986, *ΙΣΣΑ: otok Vis u helenizmu*, Pula: Arheološki muzej Istre.
- KIRIGIN, B. 1999, Arheologija otoka Visa, Biševa, Sveca i Palagruže, *Vjesnik za arheologiju i historiju dalmatinsku*, 90–91, 405–458.
- KIRIGIN, B., VUJNOVIĆ, N., ČAČE, S., GAFFNEY, V., PODOBNIKAR, T., STANČIČ, Z., BURMAZ, J. 2006, *The Adriatic Islands Project, vol III: The Archaeological Heritage of Vis, Biševo, Svetac, Palagruža and Šolta*, Oxford: British Archaeological Reports.
- KIRIGIN, B., GAFFNEY, V., KAISER, T., BARBARIĆ, V., HAYES, J. 2024. Sacred and Profane: The Talež Enclosure and Vela Gomila on the Island of Vis, u/in: *Fortunatus ligo – Zbornik povodom sedamdesetog rođendana Ante Miloševića*, Basić, I., Josipović, I., Jurković, M. (ur./ed.), Split, Zadar, Zagreb, Motovun: Sveučilište u Zagrebu, Sveučilište u Splitu, Sveučilište u Zadru, 79–100.
- KOROŠEC, J. 1959, Prehistorijski željeznodobni keramički nalazi na gradini u Danilu kod Šibenika, *Ljetopis JAZU*, 63, 214–225.
- KRKLEC, K., LOZIĆ, S., ŠILJEG, A. 2012, Geomorfološke značajke otoka Visa, *Naše more*, 59/5–6, 290–300.
- LENTJES, D. 2016, *Landscape and Land Use in First Millennium BC Southeast Italy: Planting the Seeds of Change*, Amsterdam: Amsterdam University Press.
- LOŽNJAK DIŽDAR, D., POTREBICA, H. 2017, *Brončano doba Hrvatske u okviru srednje i jugoistočne Europe*, Zagreb: Meridijani.
- NIKOLANCI, M. 1977, Bilješka o korintskim vazama na Visu, *Vjesnik za arheologiju i historiju dalmatinsku*, 60–61 (1968-1969), 149–153.
- NOVAK, G. 1966, Grčka kolonizacija na istočnoj obali Jadranskog mora, *Vjesnik za arheologiju i historiju dalmatinsku*, 68, 119–126.
- PARAMAN, L., UGARKOVIĆ, M. 2021, Gradinsko utvrđenje Sutilija: nove spoznaje temeljene na arheološkim nalazima prikupljenim neinvazivnim istraživanjima, *Vjesnik za arheologiju i historiju dalmatinsku*, 113, 41–99.
- PERIČIĆ, Š. 1999, Razvitak gospodarstva otoka Visa u prošlosti, *Radovi Zavoda povijesnih znanosti HAZU-a u Zadru*, 41, 61–114.
- PETRIĆ, N. 2004, Kultura Gudnja i primjeri importa u neolitikumu Dalmacije, *Prilozi Instituta za arheologiju*, 21, 197–207.
- POLYBIUS, 1893, *Historiae*, vol. III., Büttner-Wobst, T. (ur./ed.), Lipsae: B. G. Teubner.
- PROTIĆ, G. 1985, Prahistorijski nalazi s otoka Visa, *Vjesnik za arheologiju i historiju dalmatinsku*, 78, 37–44.

- ŠEŠELJ, L., VUKOVIĆ, M. 2013, Liburnsko naselje u Radovinu: preliminarna analiza keramičkog materijala, *Diadora*, 26–27, 333–350.
- TEOH, M., MCCLURE, S., PODRUG, E. 2014, Macroscopic, petrographic and XRD analysis of Middle Neolithic figulina pottery from central Dalmatia, *Journal of Archaeological Science*, 50, 350–358.
- UGARKOVIĆ, M. 2019, *Geometrija smrti: isejski pogrebni obredi, identiteti i kulturna interakcija. Antička nekropola na Vlaškoj njivi, na otoku Visu*, vol. I/1–2., Split; Zagreb: Arheološki muzej u Splitu; Institut za arheologiju.
- VUKOVIĆ, M. 2014, Razmatranja o liburnskoj keramici iz sonde 63 s Beretinove gradine kod Radovina, *Diadora*, 28, 21–52.
- VUKOVIĆ, M. 2018, Preliminarni rezultati rekognosciranja jugoistočnog Velebita, *Diadora*, 32, 49–88.
- ZANINOVIĆ, M. 2012, Neke posebnosti antičkog prometa duž istočnog Jadrana, *Histria Antiqua*, 21, 21–28.

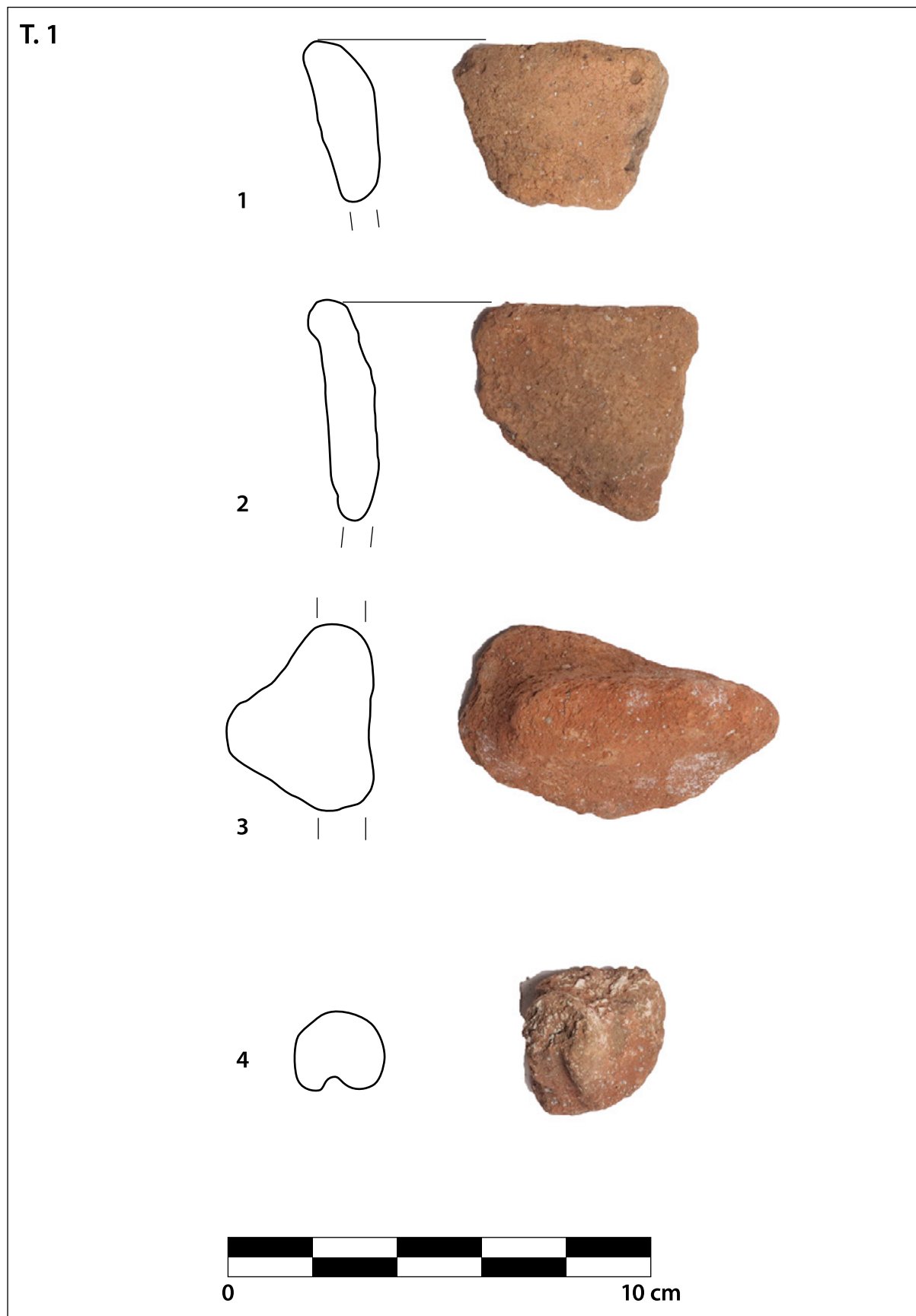


TABLA 1. *Lokalitet Grodac*
PLATE 1 *Lokalitet Grodac*

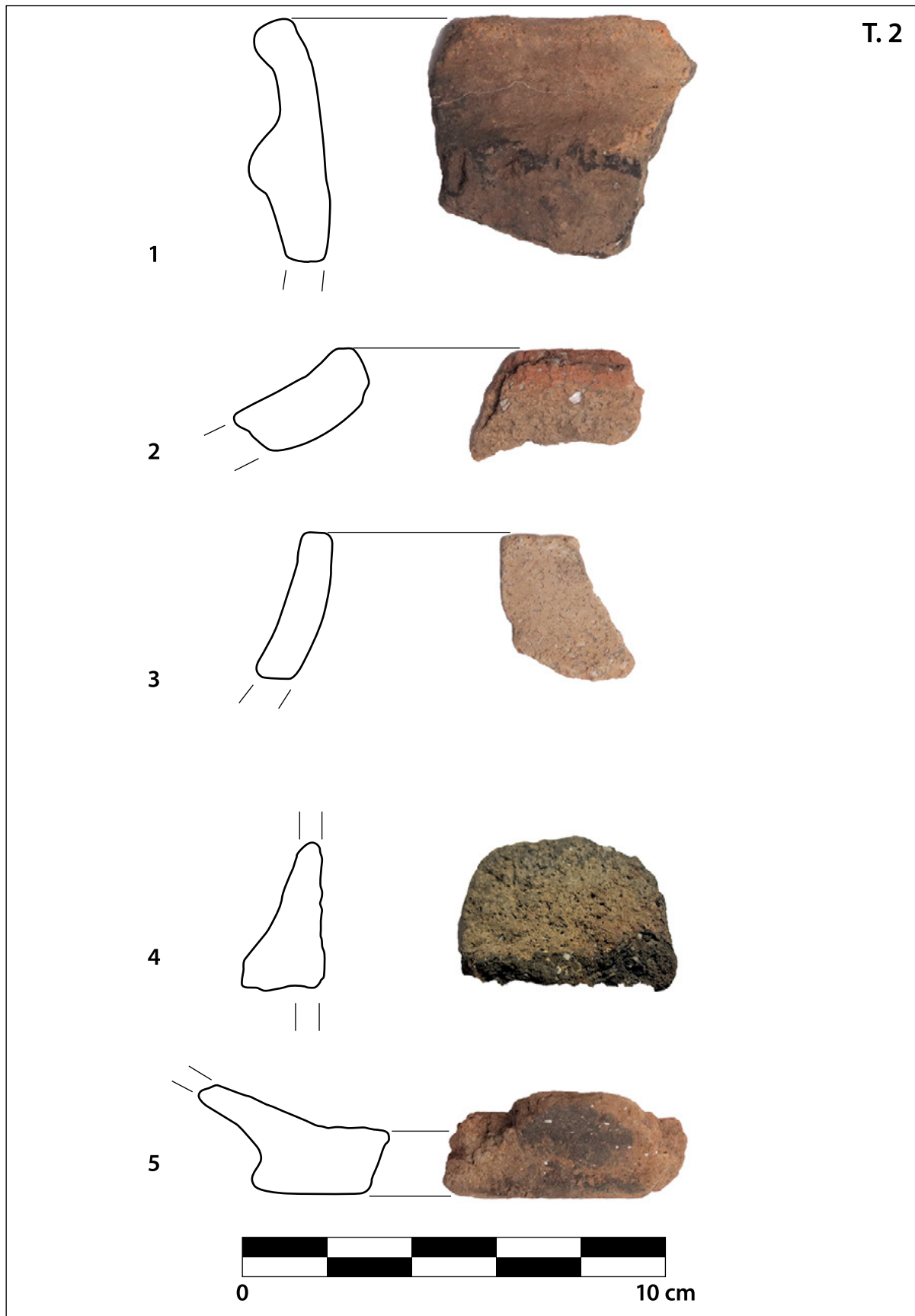


TABLA 2. Lokalitet Štracine
PLATE 2 Lokalitet Štracine



TABLA 3. 1–2: lokalitet Štracine, 3–9: lokalitet Grodac
PLATE 3 1–2: lokalitet Štracine, 3–9: lokalitet Grodac