

# FINAL PLANS FOR THE TERRAIN-INDUCED ROTOR EXPERIMENT

Vanda Grubišić<sup>1</sup> and Joachim Kuettner<sup>2</sup>

<sup>1</sup> Desert Research Institute, Reno, NV

<sup>2</sup> National Center for Atmospheric Research, Boulder, CO

E-mail: *Vanda.Grubisic@dri.edu*

**Abstract:** A summary is given of the scientific objectives and experiment design for the upcoming Terrain-induced Rotor Experiment (T-REX), which has been proposed for March and April 2006 in the Sierra Nevada in California.

**Keywords** – Atmospheric rotors, mountain waves, coupled rotor system, Sierra Nevada, Owens Valley

## 1. INTRODUCTION

Terrain-induced Rotor Experiment (T-REX) is the second phase of a coordinated effort to explore the structure and evolution of atmospheric rotors and associated phenomena in complex terrain (Grubišić *et al.* 2005). Atmospheric rotors are intense low-level horizontal vortices that form along an axis parallel to, and downstream of, a mountain ridge crest in association with large-amplitude mountain waves. High-levels of turbulence in atmospheric rotors are known to pose a great hazard to aviation. In spite of that, there have been only a few studies of limited scope and no comprehensive studies of this important phenomenon in the last 30 years [Grubišić and Lewis (2004) and Hertenstein and Kuettner (2005) provide historical overviews of early studies of rotors]. Despite the significance of rotors, which also includes the ability to loft and transport aerosols and chemical and biological contaminants on the dry lee side of mountain ranges, the studies of rotors have been so scarce because a comprehensive approach to the complex coupled system necessary to understand rotors has become possible only recently as a result of the newest advances in remote sensing technology, atmospheric numerical modeling, and our understanding of boundary-layer processes.

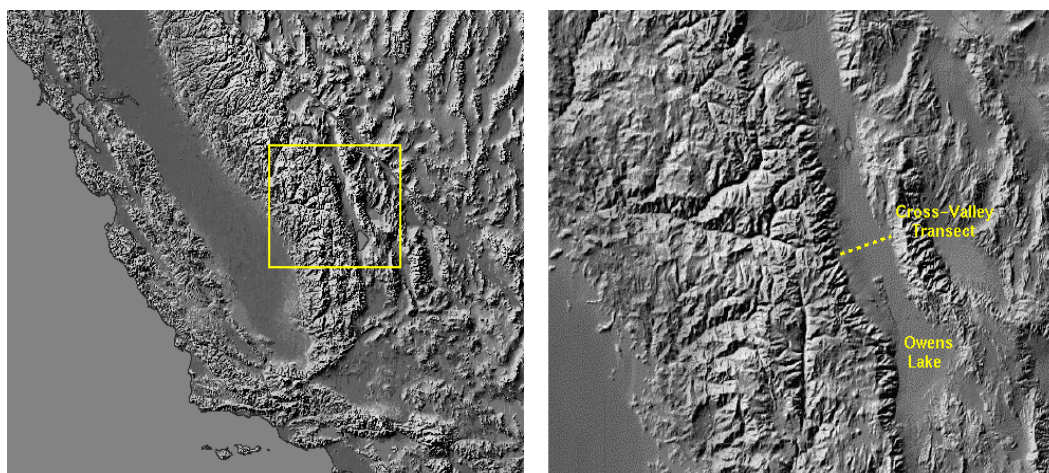
The initial, exploratory phase of this multi-year coordinated effort is the Sierra Rotors Project (SRP), which completed its Special Observation Period (SOP) in early spring 2004 [cf. Grubišić and Billings (2005) and references therein]. Here we describe the final plans for T-REX, which will take place in March and April 2006 in the same location of Phase I field activities, in Owens Valley in the lee of the Sierra Nevada in California.

## 2. SCIENTIFIC OBJECTIVES

Recent theoretical studies and observations of rotors (Clark *et al.* 2000; Doyle and Durran 2002, 2004; Vosper 2004; Chen *et al.* 2004; Mobbs *et al.* 2005; Grubišić and Cohn 2004; Grubišić and Billings 2005) show that rotors are strongly coupled to both the structure and evolution of overlying mountain waves as well as the underlying boundary layer. Consequently, the core scientific objectives of T-REX are focused on improving the understanding and predictability of *the coupled mountain-wave/rotor/boundary-layer system*. This core objective includes the role of the upstream flow properties in determining the dynamics and structure of the rotor coupled system, wave/rotor dynamic interactions, internal rotor structure, rotor/boundary-layer interactions as well as the upper-level gravity breaking and turbulence. In addition, complementary scientific objectives are focused on understanding the role of mountain waves in stratospheric-tropospheric exchange, structure and evolution of the complex terrain boundary layer in the absence of rotors, and wave cloud phase transitions and layering.

### 3. FIELD SITE

Owens Valley lies in the lee of the southern Sierra Nevada. This portion of the Sierra Nevada is the tallest, quasi two-dimensional topographic barrier in the contiguous United States with a number of peaks above 4 km, including the highest peak in the lower 48 states (Mt. Whitney 4,418 m), and the steepest lee slopes (~30 degrees). The ~3 km high White-Inyo range forms the eastern wall of the valley. The site of the experiment will be the central portion of Owens Valley, near town of Independence, where mountain waves and attendant rotors have been known to reach particularly striking amplitude and strength. This was also the site of the 1950's Sierra Wave Project (Holmboe and Klieforth 1957). Climatological studies show that the months of March and April have the highest frequency of rotor events, including many days with conditions favorable for generation of mountain waves and rotors, and also many days when it will be possible to document terrain-induced boundary-layer circulations in Owens Valley under more quiescent conditions.



**Figure 1** Shaded relief topographic map of the central and southern Sierra Nevada (left panel) and Owens Valley (right panel). The north-south elongated Owens Valley lies in between the Sierra Nevada and the White-Inyo mountain ranges, which define its west and east walls, respectively. The yellow dotted line in the right panel shows the position of the cross-valley measurement transect through Independence, California and the location of the dry bed of Owens Lake.

### 4. EXPERIMENT DESIGN

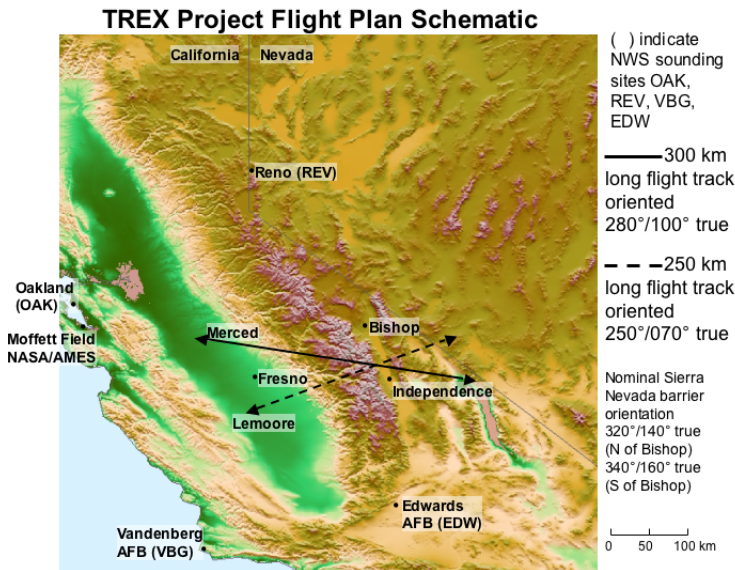
In order to achieve its scientific objectives, the T-REX program has two main observational thrusts:

- 1) Comprehensive ground-based and airborne, in situ and remote sensing measurements during strongly perturbed conditions favoring rotor formation, and
- 2) Comprehensive observations of complex-terrain boundary layer structure and evolution from undisturbed to strongly perturbed conditions.

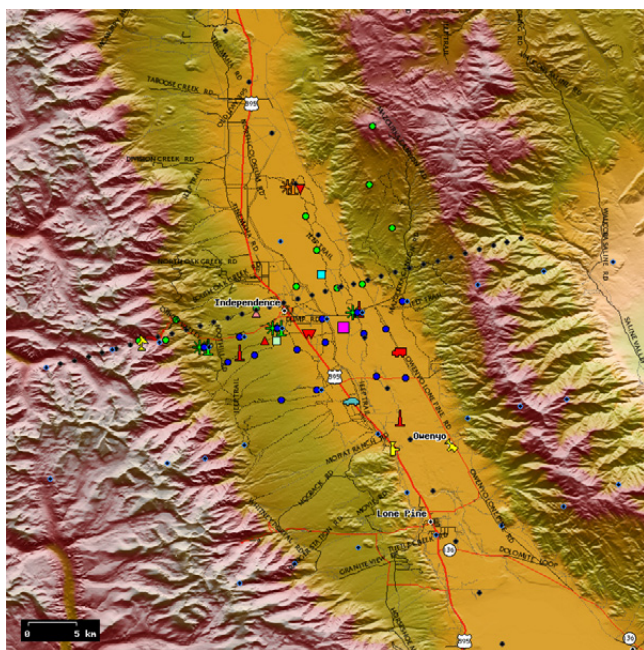
Ground-based and airborne, in situ and remote-sensing measurements will be conducted both upwind and within Owens Valley. Some of the planned measurements will be met through intensive observational periods (IOP) (e.g. aircraft and manually-operated instrumentation), whereas others will be met through continuous operation. Our plans include three research aircraft (NSF/NCAR HIAPER, University of Wyoming King Air, UK BAe146), equipped with an aerosol lidar, atmospheric chemistry instruments and microphysics probes (HIAPER and UK BAe146), and with dropsonde systems to document the mesoscale structure and evolution of the upper parts of the rotor coupled system over Owens Valley as well as the kinematic and thermodynamic structure of airflow up- and downstream of the valley centerline. An array of fixed and mobile ground-based instruments, including lidars, wind profilers, sodars, sounding systems, dense networks of automatic weather stations, microbarographs, and temperature data loggers, flux towers, and an instrumented car, will be used to document the lower

portions of the rotor coupled system under strongly perturbed conditions favoring rotor formation as well as the flow and thermodynamic structure of the boundary layer in absence of rotors. Special upstream GPS radiosonde soundings sites will be located in the Central Valley. Figures 2 and 3 show the flight-plan schematic, and the proposed T-REX ground-based instrumentation.

The field operations will be supported by real-time mesoscale model forecasts, and ensuing field research will be tightly coupled with numerical modeling studies.



**Figure 2** T-REX flight-plan schematic showing the orientation of possible cross-mountain flight tracks over the Sierra Nevada and the White-Inyo range.



- Yale video cameras
- Yale K-band Radar
- soil moisture
- U. Innsbruck instrumented car
- NCAR MISS
- NCAR ISS
- NCAR ISS MAPR
- GPS sounding site
- MGLASS
- U. Utah HOBOs
- DRI AHS
- U. Leeds AMS
- U. Houston flux tower
- U. Houston sodar
- U. Leeds flux towers
- U. Leeds sodars
- NRL Aerosol Lidar
- NCAR REAL
- ASU Doppler Lidar
- DLR Doppler Lidar
- NOAA Doppler Lidar
- NCAR ISFF

**Figure 3** Color relief map of the central portion of Owens Valley showing the T-REX field campaign area and the proposed ground-based instrumentation. The locations of the GPS sounding site at NAS Lemoore (pink diamond) and the MGLASS location (red star) are shown in Figure 2 above. The regular NWS upper-air sounding locations in the surrounding area: Oakland, CA, Vandenberg AFB, CA, and Reno, NV are also shown in Figure 2.

**Acknowledgments:** Participants in T-REX include investigators from a large number of US universities and agencies, the National Center for Atmospheric Research, and several European universities and research institutes. The T-REX science plan and experiment design are based on individual contributions of these scientists. This work was supported in part by NSF grant ATM-0242886 to the Desert Research Institute.

## REFERENCES

- Chen, Y., F. L. Ludwig, F. L., & R. L. Street, 2004: Stably-stratified flows near a notched, transverse ridge across the Salt Lake Valley. *J. Appl. Meteor.*, **43**, 1308-1328.
- Clark, T. L., W. D. Hall, R. M. Kerr, D. Middleton, L. Radke, F. M. Ralph, P. J. Nieman, and D. Levinson, 2000: Origins of aircraft-damaging clear-air turbulence during the 9 December 1992 Colorado downslope windstorm: Numerical simulations and comparison with observations. *J. Atmos. Sci.*, **57**, 1105-1131.
- Doyle, J. D., and D. R. Durran, 2002: The dynamics of mountain-wave induced rotors. *J. Atmos. Sci.*, **59**, 186–201.
- Doyle, J. D., and D. R. Durran, 2004: Recent developments in the theory of atmospheric rotors. *Bull. Amer. Meteor. Soc.*, **85**, 337–342.
- Grubišić, V., and S. A. Cohn, 2004: Sierra Rotors Project: Preliminary findings. *Proceedings. 11th Conf. on Mountain Meteorology and the Annual Mesoscale Alpine Programme (MAP) Meeting*. AMS, Bartlett, NH, Online preprint [http://ams.confex.com/ams/11Mountain/techprogram/paper\\_77364.htm](http://ams.confex.com/ams/11Mountain/techprogram/paper_77364.htm)
- Grubišić, V., and J. M. Lewis, 2004: Sierra Wave Project revisited: 50 years later. *Bull. Amer. Meteor. Soc.*, **85**, 1127–1142.
- Grubišić, V., and B. J. Billings, 2005: Sierra waves and rotors: A study of the Sierra Rotors IOP 8 event. *Proceedings. International Conference on Alpine Meteorology/MAP Meeting, Zadar, Croatia*.
- Grubišić, V., J. D. Doyle, J. Kuettner, G. S. Poulos, and C. D. Whiteman, 2004: Terrain-induced Rotor Experiment (T-REX) Overview Document and Experiment Design. 72 pp.
- Hertenstein, R. F., and J. P. Kuettner, 2005: Rotor types associated with steep lee topography: Influence of the wind profile. *Tellus A*, **57**, 117–135.
- Holmboe, J. R., and H. Klieforth, 1957: Investigation of mountain lee waves and the airflow over the Sierra Nevada. Final Report. Department of Meteorology, UCLA, Contract AF 19(604)-728, 283 pp.
- Mobbs, S. D., S. B. Vosper, P. F. Sheridan, R. Cardoso, R. R. Burton, S. J. Arnold, M. K. Hill, V. Horlacher, and A. M. Gadian, 2005: Observations of downslope winds and rotors in the Falkland Islands. *Quart. J. Roy. Meteor. Soc.*, **131**, 329–352.
- Vosper, S. B., 2004: Inversion effects on mountain lee waves. *Quart. J. Roy. Meteor. Soc.*, **130**, 1723–1748.