

A new model for predicting the advance rate of a Tunnel Boring Machine (TBM) in hard rock conditions

The Mining-Geology-Petroleum Engineering Bulletin
UDC: 624.1
DOI: 10.17794/rgn.2020.2.6

Original scientific paper



Mohammad Hossein Arbabsiar¹; Mohammad Ali Ebrahimi Farsangi¹; Hamid Mansouri¹

¹Mining Engineering Department, Shahid Bahonar University of Kerman, Kerman, Iran

Abstract

The prediction of the advance rate of a Tunnel Boring Machine (TBM) in hard rock conditions is one of the most important concerns for estimating the time and costs of a tunnel project. In this paper, in the first step, a model based on Rock Engineering Systems (RES) is proposed to predict geotechnical risks (representing media characteristics) in rock TBM tunnelling. Fifteen main parameters that influence the geotechnical hazards were used in the modelling. In establishing an interaction matrix and also a parameter rating, the views of five experts were taken into account. The Vulnerability Index (VI) (geotechnical risk levels) for 2058 datasets out of 2168 sets of data from 53 geological zones in 11 km of the Zagros long tunnel was obtained. In the second step, based on the machine operating parameters such as torque, cutter head rotation per minute, cutter normal force and media characteristics (represented by VIs), which were used as input parameters and advance rate was used as an output parameter, while using 2058 datasets, linear and non-linear multiple regression analyses were carried out. 110 datasets (out of 2168 datasets), which were not used in the modelling, were applied to evaluate the performance of regression models and other models in literature and the results were compared. The obtained results showed that the new linear model proposed with $R^2=0.83$ and $RMSE=0.12$ has a better performance than the other models.

Keywords:

Advance rate, Regression models, TBM geotechnical risk, Rock engineering systems, Hard rock TBM, Zagros long tunnel

1. Introduction

In tunnel construction by TBM, the estimation of time and cost of a project are one of the most important parameters, which has always been a challenge between contractors and owners. Penetration and advance rates are key parameters in the performance estimation of a TBM, which results in estimating the time and cost of a project. In recent years, many researchers devoted their work to predict the performance of a TBM. There are two categories of research works while considering modelling of predicting performances of hard rock TBMs. One category is theoretical models and the other empirical models (Rostami, 2015). In principle, theoretical models are developed, by use of tests of indentation or full-scale cutting tests in a laboratory, which provide an estimation of cutting forces based on the type of cutter, geometry of cutting, spacing, and the cut penetration (Crow, 1975; Roxborough and Phillips, 1975; Ozdemir, 1978; Snowdon et al., 1982; Sanio, 1985; Sato et al., 1991; Rostami and Ozdemir, 1993; Rostami, 1997; Balci et al. 2009; Bilgin et al. 2005, 2007, 2012; Tumac et al., 2012). The main weakness of these

models is that the tests used do not entirely describe the facts regarding rock mass characteristics which the disc cutters of TBM face in the field. This type of equipment for tests may not be easily accessible in all centers for research around the world (Khademi Hamidi et al. 2010). The first models were developed, using intact rock parameters such as tensile strength and Uniaxial Compressive Strength (UCS) (Graham, 1977; Farmer and Glossop, 1980). Cassinelli et al. the Penetration Rate (PR) of TBM by the use of Rock Structure Rating (RSR) in 1982. A good relationship between RSR, UCS, and the penetration rate of TBM was introduced by Inaurato et al. in 1991. Snowdon et al. and Sanio disclosed relationships between the UCS of rock and the specific energy in 1983 and 1985 respectively (Farrokh, 2018). Different laboratory tests such as Taber abrasion, Shore hardness, Schmidt hammer, point load index, and drilling rate index tests were applied for the prediction of PR (Howarth et al. 1986; McFeat-Smith, 1977; Ozdemir, 1977; Pang et al., 1989; Yagiz, 2002; Yagiz and Ozdemir, 2001; Fattahi and Moradi, 2017). Other prediction models have been improved in the last three decades to consider a wide range of rock properties and rock mass conditions. Palmstrom (1995) introduced a forecast model based on the Rock Mass index (RMI) and the Q_{TBM} model was developed by Barton (1999, 2000)

Corresponding author: Mohammad Ali Ebrahimi Farsangi
maebrahimi@uk.ac.ir

based on the developed Q system. The NTNU model was introduced by the Norwegian University of Science and Technology (Bruland, 2012; Blindheim, 1979). Rock Mass Rating (RMR) parameters were employed for predicting TBM performance by Sapigni et al. (2002); Bieniawski et al. (2007); Khademi Hamidi et al. (2010). In 2008, Yagiz developed a relationship between rock mass properties and PR. Hassanpour et al. (2009, 2010, 2011, 2016) investigated TBM performance based on the Field Penetration Index (FPI). Gong and Zhao (2007, 2009) and Gong et al. (2007) introduced the index of boreability and rock brittleness to investigate the rock mass characteristics that affect the performance of TBM. Bieniawski et al. (2007, 2008), examined TBM boreability using rock mass classification systems (Namli and Bilgin, 2017). The difficulties of TBM excavation in the blocky area were examined by Delisio and Zhao (2013). Neuro-fuzzy techniques were used by Alvarez Grima et al. (2000) for modelling of TBM performance. A study was carried out by Acaroglu et al. (2008) for predicting the specific energy requirement for the performance of TBM by applying fuzzy logic. Zhao et al. (2007) used a neural network predictor for TBM performance prediction. Yagiz (2009) applied artificial neural networks and non-linear multiple regression to estimate the TBM performance. The hard rock TBM penetration rate was predicted by Yagiz and Karahan (2011), using the Particle Swarm Optimiza-

Table 1: The TBM specifications, section two, the Zagros long tunnel Salimi et al. (2016)

Parameter	Value	Unit
Diameter of machine	6.73	m
Diameter of cutters	4318	mm
Number of disc cutters	42	—
Disc cutters nominal spacing	90	mm
Maximum of cutterhead thrust	28.134 at 35 bar	kN
Power of cutterhead	2100	kW
Speed of cutterhead	0-11	rpm
Torque (nominal) of cutterhead	4450 at 9 rpm	kN.m
Stroke of thrust cylinder	1700	mm
Capacity of conveyer	650	t/h
Total weight of TBM	573	ton

tion (PSO) method. In an attempt, Farrokh et al. (2012) investigated different models used to predict the penetration rate of hard rock TBMs.

In the ABROCK Research Project, different research works are being carried out for the analysis and prediction of cutter wear and penetration rate of TBM tunneling in hard rock conditions (Moradi and Ebrahimi, 2014). Ghasemi et al. (2014) and Fattahi and Babanouri (2017) employed soft computing methods for TBM performance prediction.

Table 2: A descriptive statistics of datasets for section two of the Zagros long tunnel

No	Parameter	Unit	Symbol	Min	Max	Mean	St.d
1	Cutter head rotation per minute	rotation/minute	RPM	2.65	8	5.42	0.91
2	Cutter normal force	kN	F _n	52.73	231.04	156.62	34.84
3	Torque	kN.m	T _q	292	8790	814.45	330.91
4	Advance rate	m/h	AR	1.68	3.96	2.87	0.45
5	Uniaxial compressive strength	MPa	UCS	15	125	35.16	21.69
6	Elastic modulus	GPa	E	5	22.5	5.73	2.66
7	Quartz content	%	QC	0.5	4	1.76	1.01
8	Dry density	g/cm ³	Dd	2.25	2.55	2.41	0.06
9	Porosity	%	P	3.5	12.5	8.02	2.28
10	Tensile strength (Brazilian test)	MPa	TS	1	6	2.50	0.95
11	Over burden	m	Ob	40	1000	211.76	96.09
12	Joint spacing	mm	JS	15	300	136.27	84.50
13	Rock quality designation	%	RQD	22.5	85	65.98	12.64
14	Rock mass rating (1989)		RMR ₈₉	34	65	47.54	6.70
15	Gas emission	(H ₂ S)	Ge	0	30	7.05	4.47
		CH ₄		0	7	0.5	0.7
15	Squeezing	-	Sq	1.69	33.56	5.24	4.29
16	Water table	m	Wt	50	400	262.68	138.66
17	Water inflow	lit/min in 10 m	Wi	0	300	12.51	27.64
18	Clay contents in mass rock	%	Cc	5	40	2.80	5.48
19	Width of crushed zone	m	CZ	0	200	2.18	15.11

Maximum: Max; Minimum: Min; Standard deviation: St.d

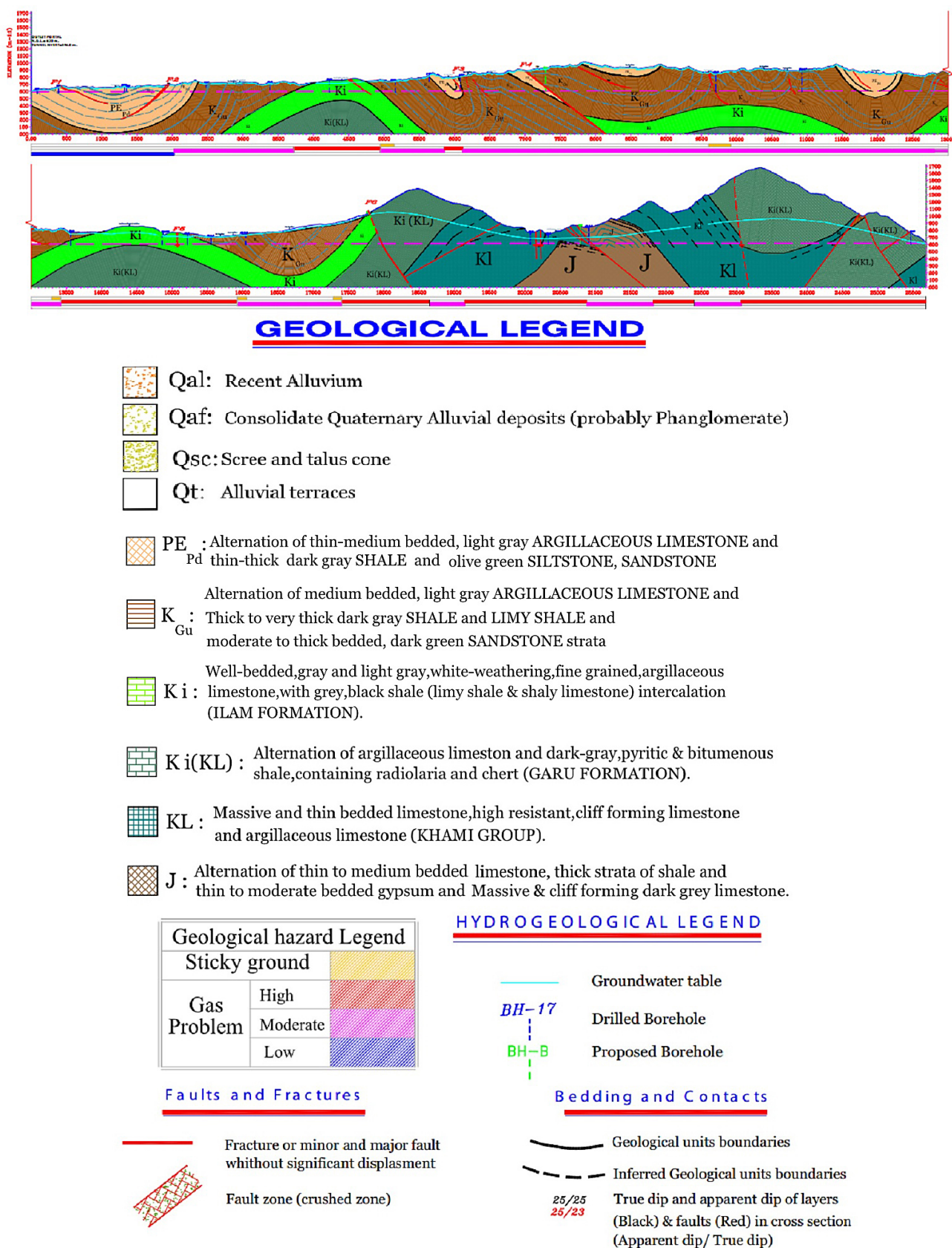


Figure 1: Geological profile of section two of the Zagros long tunnel alignment (Lar consulting engineers, 2003, 2004).

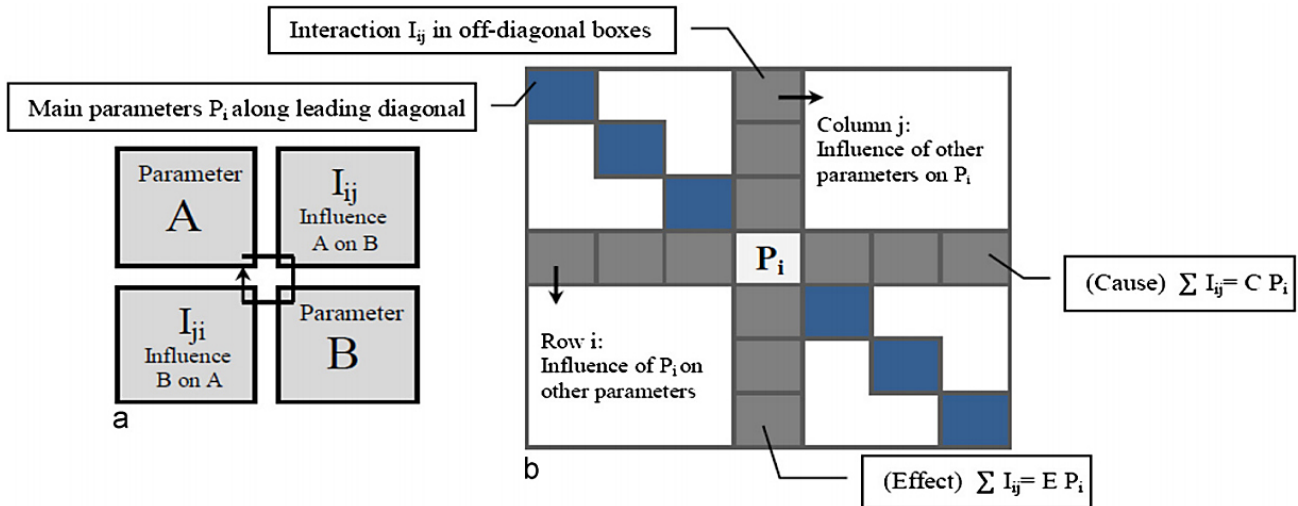


Figure 2: Matrix of interaction in the RES, a: interaction matrix of a system with two parameters; b: a view of interaction matrix coding (Modified after Hudson (1992))

The objective of the present piece of work is to introduce a new model to improve the accuracy of advance rate prediction in different geotechnical conditions in rock TBM tunnelling, considering both operational parameters of TBM (machine parameters) as well as media characteristics. Media characteristics are represented by the geotechnical risk levels in the modelling. The geotechnical risk levels are obtained, using an RES based model. In the new model, machine parameters and geotechnical risk levels are input parameters and the advance rate is an output parameter. The field data used for the modelling was collected from section two of the Zagros long tunnel in Iran.

2. Description of the site and data collection

The Zagros long tunnel with a circular cross-section, an excavation diameter of 6.73 m, a final diameter of 6 m, and a length of 52 km is a water transfer tunnel which consists of two sections. This tunnel is located in the northwest of Iran. It was planned to transfer about 70 m³/s of water through this tunnel. The data was collected from the second section of the tunnel, which has a length of 26 km. This section of the tunnel was excavated by a double-shield TBM. The machine specifics are shown in Table 1.

The tunnel passes through three formations. The Pabdeh (PEPd) formation includes a mix of greenish-grey limestone argillaceous and dark grey limy shale. The Gurpi (KGu) formation combines argillaceous limestone and limy shale. Furthermore, the Ilam (Ki) formation consists of brownish-grey limestone as illustrated in Figure 1 (Lar consulting engineers, 2003, 2004).

Rock mass conditions vary from weak to good (RMR: 17 to 75). According to geological studies, 53 zones were recognized, which mainly are mainly consist of layers of

shale, limestone, and marl. The dominant lithological characteristics were used to name the zones (Marl (MA), Shale (SH), Limestone (LI), Limy Shale (LI-SH), Marly-Limestone (LI-MA), Fractured Zone (FZ), and Crushed Zone (CZ)). Twenty-three different types of faults intersect with the tunnel. Overburdens vary between 40 m and 1000 m. The water table above the tunnel varies from 50 m to 400 m (Lar consulting engineers, 2003, 2004).

The database for this research work (2168 sets of data) was obtained by combining the data in the pre-construction and construction phases. During the construction phase, the geological and geomechanical data, which were obtained before construction, were examined (Khademi Hamidi et al. 2010; Salimi et al. 2016). During construction, the operational data of TBM such as Revolutions per Minute (RPM), torque, thrust, and advance rate were recorded. The basic descriptive statistics of the sets of data are revealed in Table 2.

3. Rock engineering system

Hudson (1992) introduced the Rock Engineering Systems (RES) approach in which interactions between rock mechanics parameters in a rock system can be obtained. This approach was applied to different rock engineering fields such as an investigation of underground excavation stability (Lu and Hudson, 1993), with rock-fall risk assessment (Cancelli and Crosta, 1993), and characteristics of a rock mass to indicate natural slope stability (Mazzoccola and Hudson, 1996). (Latham and Lu, 1999) introduced an assessment system to determine the rock mass's blastability, (Benardos and Kalliampakos, 2004) used an assessment system for geotechnical hazards in TBM tunnelling (Shin et al., 2009) studied a hazard assessment of tunnel collapses, a quantitative approach, (Faramarzi et al., 2013) predicted

rock fragmentation by blasting and predicted the advance rate of face, while determination of the operation efficiency in retreat longwall mining panel was studied by (Aghababaei et al., 2019). In the approach of RES, establishing the matrix of interaction plays an important role. By generating the interaction matrix, the weighting of the parameters of the rock mass system can be evaluated. In this matrix, the principal parameters, which affect the system, are placed on the leading diagonal of the matrix and the interactions (effects of each parameter on any other parameter) are located on the off-diagonal cells. The assignment of values to off-diagonal cells is called coding of the interaction matrix. The simplest of the interaction matrix, a two parameter system, is shown in **Figure 2(a)**. Beside that, a view of interaction matrix coding is shown in **Figure 2(b)**. The row passing through P_i denotes the impact of P_i on all the other parameters in the system, while the column through P_i shows the impacts of other parameters, or the remaining of the system, on the P_i . In principle, there is no limit to the number of parameters that may be included in an interaction matrix.

For numerically coding the interaction matrix, different procedures such as the 0-1 binary, Expert Semi-Quantitative (ESQ) (Hudson, 1992), and the Continuous Quantitative Coding (CQC) (Lu and Latham, 1994) were applied. Among the suggested coding procedures, the most commonly used is the ESQ coding. Based on this coding procedure, the interaction intensity is presented by the values from 0 for no interaction to 4 for critical interaction as revealed in **Table 3**.

Table 3: The values for coding of interaction matrix in the ESQ procedure (Hudson, 1992)

Coding	Description
0	No interaction
1	Weak interaction
2	Medium interaction
3	Strong interaction
4	Critical interaction

In the matrix of interaction, the summation of a row is called the “cause” value ($C_{P_i} = \sum_{j=1}^n I_{ij}$) and the summation of a column is the “effect” value ($E_{P_j} = \sum_{i=1}^n I_{ij}$), which are the coordinates (C, E) for a parameter in the system. In the cause and effect space, the coordinate values for each parameter in the system can be plotted, which is called the C-E plot. The interactive intensity value of each parameter in the system is indicated as the summation of the C and E values ($C + E$) and it can be applied as an indication of the significance of a parameter in the system. Also, a parameter’s weighting factor (a_i) is defined using the percentage value of ($C + E$) as shown in **Equation 1**.

$$a_i = \frac{(C_i + E_i)}{(\sum_i C_i + \sum_i E_i)} \times 100 \quad (1)$$

Where:

- C_i – Cause of i^{th} parameter,
- E_i – Effect of i^{th} parameter,
- a_i – Weighting of the i^{th} parameter.

4. Prediction of the level of geotechnical risks, using an RES based model

The level of geotechnical risks was used to reflect the effects of media characteristics in the modelling of TBM performance prediction. In this research, the principles of the work carried out by Benardos and Kaliampakos, (2004) were adopted to define a model for predicting the level of geotechnical risks in rock TBM tunnelling. The merit of this modelling is that all of the important and easily obtainable parameters affecting geotechnical risks in rock TBM were taken into account.

There are two main phases for defining the RES based model. In the first phase, the geotechnical parameters (hazards), which cause the occurrence of risk in the case of rock TBM tunnelling, are defined. Also, their behaviors are analyzed and the impact (weight) that each one has in the whole risk conditions is evaluated. Further, the RES principles can be applied to evaluate the weighting of the parameters that influence the risk system.

In phase two, the Index of Vulnerability (VI), representing the level of risk, can be determined, using **Equation 2** (Hudson, 1992):

$$VI = \left(100 - \sum_{i=1}^n a_i \frac{P_i}{P_{max}} \right) \quad (2)$$

Where:

- VI – Index of Vulnerability,
- a_i – Weighting of the i^{th} parameter,
- P_i – Value (rating) of the i^{th} parameter,
- P_{max} – Maximum value assigned the i^{th} parameter (normalization factor).

In this equation, the level of total risk can be calculated based on the weight and individual influence of each parameter on the total risk level (the parameter’s value rating). The parameter value ratings can be carried out based on the effects of these parameters on the vulnerability conditions.

Based on the VI obtained, (using **Equation 2**) and the classification of VI, the level of total risk in each zone of the tunnel can be identified. In the classification for VI, it is divided into three main classes with a normalized scale of 0 to 100, (see **Table 4**). Class I is including, small-scale problems. These problems cannot significantly affect tunnel driving. In class II, a challenging region might occur, which must be taken into consideration.

Table 4: The VI classification (Modified after Benardos and Kaliampakos (2004))

Risk description	Low-Medium	Medium-High	High-Very high
Class	I	II	III
	0-33	33-66	66-100

In class III, it is expected that in certain individual regions, several difficulties during tunnel excavation, are to be observed.

4.1. Parameters influencing geotechnical risks of TBM

In reviewing the TBM geotechnical risk assessment in hard ground conditions and the pieces of literature published (Anagnostou and Kovári, 1996; Barla and Pelizza, 2000; Barla, 2001; Dalğ, 2003; Shang et al., 2004; Farrokh, 2006; Ramoni and Anagnostou, 2010; Jung et al., 2011; Shaterpour Mamaghani et al., 2015 Arbabsiar et al., 2020) many parameters can influence the TBM geotechnical risks encountered. The parameters in Table 5 are the most important ones from available parameters in the database and can be obtained easily. These parameters cover the most important hazards which might be encountered during rock TBM tunnelling such as instability, fault zone, squeezing, sticking due to muddy condition, and water ingress. In the selected parameters, the components of RMR such as UCS, RQD, joint spacing, joint orientation, joint condition, and water inflow are preferred instead of RMR as they describe other issues of risk raised as well as instability as a hazard.

Table 5: Parameters affecting the TBM geotechnical risks

Parameter	Symbol	Parameter	Symbol
RQD	P1	Gas emission	P9
UCS	P2	Squeezing	P10
Joint condition	P3	Mixed face	P11
Joint orientation	P4	Karstic condition	P12
Joint spacing	P5	Abrasive rocks (quartz contents)	P13
Water table	P6	Width of crushed zone	P14
Permeability	P7	Clay contents in mass rock	P15
Water inflow	P8	-	-

RQD describes the fracturing degree of a rock mass. It is one of the most important components of RMR, which has a significant role in the excavation’s stand-up time, indicated by RMR (Goodman., 1989). Also, rocks with low RQD cause difficulties through TBM gripping, putting excavation at risk and causing a reduction in the advance rate.

UCS shows the compressive strength of intact rocks and also has significant effects on RMR and the associated stability (Goodman., 1989). Moreover, rocks with very high UCS cause wear and tear of cutters as well as a considerable reduction in the advance rate. Also, in rocks with low UCS, gripping problems might occur. The condition of the joints significantly influences an excavation’s stability. It also affects the gripping of TBM. The total performance of TBM in joints with very rough surfaces of a limited extent and a hard wall is much better than open joints filled with more than 5 mm of gouge, or open more than 5 mm, or when joints extend more than several meters.

The orientation of the joints comparative to the tunnel axis has an impact on the chipping behavior of rocks during the excavation by TBM. Based on Bieniawski (1984, 1989), the orientation of the joints perpendicular to the tunnel axis is the most favorable for TBM tunnelling.

The spacing of joints affects the rating in RMR and therefore the stability of the tunnel. On the other hand, based on the recommendations by DAUB (German Tunnelling Committee) (DAUB, 1997), in the rocks with joint spacing of 0.2 m-0.6 m, gripping problems might be encountered, for which shield-TBM suggests. In rocks with joint spacing of 0.06 m- 0.2 m, the possible falling rocks might trap the shield-TBM causing serious delays.

Groundwater can strongly influence rock mass behavior (Goodman., 1989). Also, the pore pressure in rocks depends on the level of groundwater. Higher groundwater level means more pore pressure, resulting in decreasing stability, and in the case of high permeability and the presence of joints, an increase in water inflow. In return, the high inflow of water causes delays and possible damage.

Gas emission such as Methane (CH₄), Hydrogen Sulfide (H₂S), Carbone Monoxide (CO) and Hydrogen Cyanide (HCN) into a tunnel might cause safety concerns such as human loss and damage due to an explosion, respiratory problems as well as corrosion damage, resulting in delays in tunnelling. In most cases, the main concern is CH₄ and H₂S.

CH₄ is a flammable gas, lighter than air and odorless. The Lower Explosive Limit (LEL) and Upper Explosive Limit (UEL) for CH₄ are 5% and 15% respectively (Industrial Training Branch of the National Coal Board, 1981).

H₂S is a colorless and toxic gas with LEL and UEL of 4% and 44% respectively. It is slightly heavier than air with a strong smell of rotten eggs. H₂S dissolves in water, making a weakly acidic solution. The main dangers are related to its toxic effect and corrosive property to metals. It can be recognized by smelling below 1 ppm. The 8 hour occupational exposure limit is 10 ppm, for short times (15 min), 15 ppm is acceptable. Above 15 ppm, full face masks with filters are used. This restricts the ability to work to a great extent. Above 100 ppm, H₂S deadens a person’s sensitivity to smell it. Also,

above 100 ppm it is immediately dangerous to life or health. Therefore, filters should only be used up to 100 ppm. At higher concentrations, masks with positive pressure self-supplying respirators shall be used.

Concentrations between 50 and 100 ppm have to be negotiated for longer periods. H_2S also causes corrosion to metals, in particular to the electrical installations on the TBM. To reduce the effects, some electrical cabinets, the operator cabin, and a rest cabin have been connected to a fresh air supply (**Industrial Training Branch of the National Coal Board, 1981**).

Squeezing ground may lead to inadmissible deformations of the tunnel, damage to the support or in the case of mechanized excavation, to the immobilization of TBM due to sticking cutter heads or jamming of the shield. Depending on the number and the length of the critical stretches, squeezing conditions may even put the feasibility of the TBM drive into question (**Ramoni and Anagnostou, 2010**). Factors such as high overburden, the presence of water, poor ground condition (rock quality), high stress and properties of rocks, all affect the occurrence of ground squeezing. Several approaches have been proposed by various authors such as **Jethwa et al. (1984)**, **Singh et al. (1992)**, **Aydan et al. (1996)**, **Goel et al. (1995)**, **Hoek and Marinós (2000)**, based on practical experience and documented case histories, to identify squeezing rock conditions and potential tunnel squeezing problems. In this research, **Singh et al. (1992)** and **Jethwa et al. (1984)** approaches were used to determine the squeezing potential in different zones.

The occurrence of karstic zones through tunnel alignment results in decreasing rock strength, which in return reduces the load bearing of rock, while gripping is required. On the other hand, in the case of having gases such as CH_4 and H_2S , karstic zones facilitate the leakage of such gases into the tunnel, which raises the TBM tun-

nelling risks (**Marinos, 2001**). The requirements, which cause karstic zones include carbonate rocks, joints, and flow of water. In the Zagros long tunnel, in limited zones, the needs for the occurrence of karstic zones are met.

Encountering the alternatives of hard and soft rocks in the tunnel face, the so-called mixed face condition might cause serious damage to the cutters, which results in a delay in tunnelling. Also, in the case of facing abrasive rocks, which are identified by their quartz contents, cutter wear might occur, which decreases the penetration rate, causing significant delays to tunnelling and economic loss.

The presence of water and rocks containing clay minerals such as shale and marl might cause swelling, which in return increase the stress on the support system used. Also, in the presence of water and such rocks, a sticky condition might be encountered, causing delays and sometimes trapping of the cutterhead.

The width of crushed zones, relevant water ingress and RQD affect the risk associated with the fault zones. With a wider crushed zone, lower RQD and in the presence of high water inflow, a higher degree of risk is expected, which in return causes jamming of the TBM, delays and economic loss.

4.2. Interaction matrix and rating of parameters

4.2.1. Interaction matrix

The 15 principal parameters affecting the geotechnical risk in TBM tunnelling are located along the leading diagonal of the matrix and the effects of each parameter on any other parameter (interactions) are placed on the off-diagonal cells. The assigning values to off-diagonal cells, coding the matrix, were carried out by five experts, using the ESQ coding as proposed by **Hudson (1992)**.

Table 6: The interaction matrix for geotechnical hazards in TBM tunnelling

P_1	1	0	0	0	1	3	3	3	3	0	2	0	1	2
3	P_2	1	0	2	0	1	0	1	4	0	3	0	2	0
3	2	P_3	0	1	3	4	3	4	2	2	3	1	2	2
3	3	0	P_4	0	3	3	2	3	2	1	2	0	0	0
4	2	1	0	P_5	3	4	3	3	3	1	2	2	2	2
2	3	2	0	1	P_6	2	3	3	2	0	3	0	0	0
0	1	1	0	0	3	P_7	4	4	2	0	3	1	1	1
1	1	1	0	0	1	1	P_8	3	1	0	3	1	0	1
0	0	0	0	0	0	0	0	P_9	0	0	0	0	0	0
0	0	0	0	0	0	1	2	0	P_{10}	0	0	0	0	0
2	0	0	0	0	0	1	1	1	0	P_{11}	1	0	0	0
2	1	1	0	1	3	2	2	2	1	0	P_{12}	1	1	1
1	1	1	0	0	0	1	0	1	1	0	2	P_{13}	2	0
2	0	1	0	0	1	2	2	2	2	0	1	0	P_{14}	2
2	3	2	2	2	1	3	2	2	2	0	1	1	2	P_{15}

Table 7: The principal parameters weighting in the TBM tunnelling geotechnical risk

No.	Parameter	C	E	C+E	C-E	a_i (%)
1	RQD	19	25	44	-6	8.6
2	UCS	17	18	35	-1	6.9
3	Joint condition	32	11	43	21	8.4
4	Joint orientation	22	2	24	20	4.7
5	Joint spacing	32	7	39	25	7.6
6	Water table	21	19	40	2	7.8
7	Permeability	21	28	49	-7	9.6
8	Water inflow	14	27	41	-13	8.0
9	Gas emission	0	32	32	-32	6.3
10	Squeezing	3	25	28	-22	5.5
11	Mixed face	6	4	10	2	2.0
12	Karstic condition	18	26	44	-8	8.6
13	Abrasive rocks (quartz contents)	10	7	17	3	3.3
14	Width of crushed zone	15	13	28	2	5.5
15	Clay contents in mass rock	25	11	36	14	7.0
Total		255	255	510	0	100

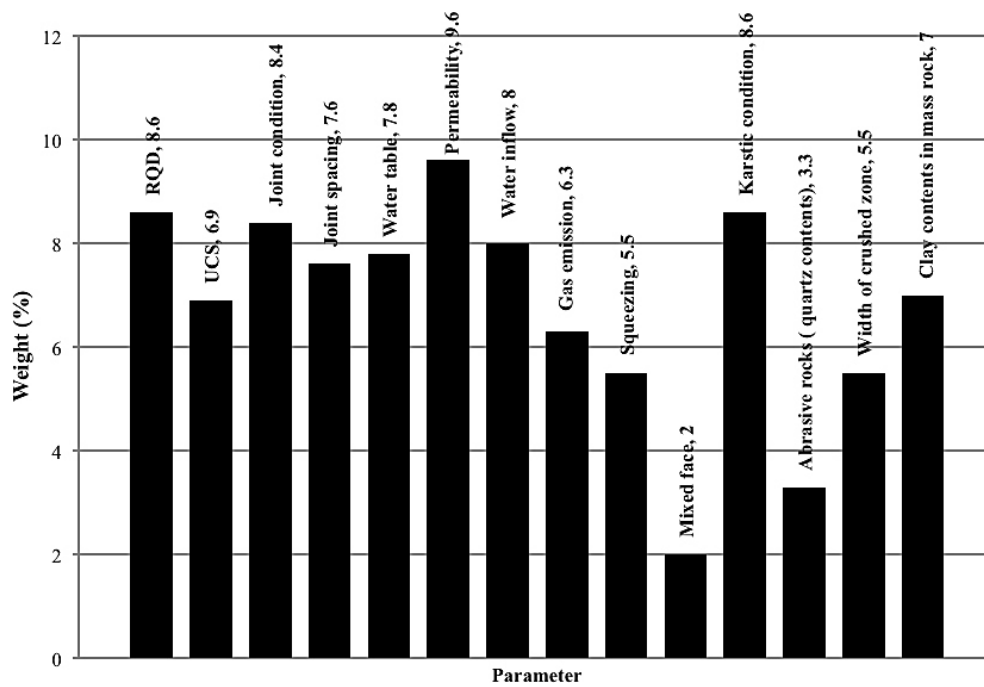


Figure 3: The principal parameters weighting in the TBM tunnelling geotechnical risk

The interaction matrix for geotechnical hazards in TBM tunnelling is presented in **Table 6**.

Table 7 gives the cause (C), effect (E), interactive intensity (C+E), dominance (C-E), and weight of each parameter (a_i) calculated by **Equation 1** for the parameters affecting the hazards in TBM tunnelling. Also, the weight for each parameter is shown in **Figure 3**. As can be seen in **Table 7** and **Figure 3**, the most interactive parameters are permeability, RQD, joints condition karstic zones, whereas the least interactive parameter is the mixed face condition.

4.2.2. Rating of parameters

The rating of the parameters' values was carried out based on their effect on the vulnerability conditions. Totally 4 classes (except UCS, which has five classes), from 0 to 3 were considered, where 0 denotes the worst case (most unfavorable) and 3 the best (most favorable condition). In the case of TBM tunnelling, the rating of each parameter is presented in **Table 8**. The ranges of parameters in **Table 8** were proposed based on empirical results, practical limits and the experiences of different experts (five experts in this research work).

Table 8: The rating suggested for the effective parameters in geotechnical risks in TBM tunnelling

Parameter		Values or description and ratings						
1	RQD (%)	Value	0-25	25-50	50-75	75-100		
		Rating	0	1	2	3		
2	UCS (MPa)	Value	<5	5-25	25-50	50-150	>150	
		Rating	4	3	2	1	0	
3	Joint condition	Description	A ¹		A ²	A ³	A ⁴	
		Rating	3		2	1	0	
4	Joint orientation (According to Table 9)	Description	Very favorable and favorable		Fair	Unfavorable	Very unfavorable	
		Rating	3		2	1	0	
5	Joint spacing (m)	Value	<0.06	0.06-0.2	0.2-0.6	>0.6		
		Rating	0	1	2	3		
6	Water table (m)	Value	<0	0-50	50-150	>150		
		Rating	3	2	1	0		
7	Permeability	Value	<10 ⁻⁸	10 ⁻⁶ -10 ⁻⁸	10 ⁻⁴ -10 ⁻⁶	>10 ⁻⁴		
		Rating	3	2	1	0		
8	Water inflow (lit/min in 10 m length of the tunnel)	Value	<10	10-25	25-125	>125		
		Rating	3	2	1	0		
9	Gas emission	CH ₄ (%)	Value	<5	5-15	15-25	25-50	>50
			Rating	3	0	2	1	0
	H ₂ S (ppm)	Value	<10	10-20	20-100	>100		
		Rating	3	2	1	0		
10	Squeezing*	Value	<0.4	0.4-0.8	0.8-2	>2		
		Rating	0	1	2	3		
11	Mixed face	Description	Non-mixed		Mixed			
		Rating	3		0			
12	Karstic condition	Description	Non-karstic		Mildly karstic	Moderately karstic	Highly karstic	
		Rating	3		2	1	0	
13	Abrasive rocks (quartz contents) %	Value	<5	5-10	10-20	>20		
		Rating	3	2	1	0		
14	The width of the fractured or crushed zone	Value	None	<10	10-25	>25		
		Rating	3	2	1	0		
15	Clay contents in mass rock (muddy condition) (%)	Value	<10	10-30	30-70	>70		
		Rating	3	2	1	0		

* Based on **Jethwa et al., (1984)**

A¹: Very coarse surfaces of limited extent, hard wall rock; A²: Slightly coarse surfaces, opening less than 1 mm, hard wall rock; A³: Slightly coarse surfaces, opening less than 1 mm, soft wall rock; A⁴: Open joints with smooth surfaces, 1 to more than 5mm aperture, filled with gouge filling or 1 to more than 5mm aperture, joints extended more than several meters

4.2.3. Geotechnical risk estimation of the Zagros long tunnel

Geotechnical risk estimation of 2058 sets of data from 11 km of section two of the Zagros long tunnel was carried out using the vulnerability index (**Equation 2**). To have a clear understanding, the parameter values and the corresponding VI obtained for one set of data are shown in **Table 10**. In this table, Q_i and Q_{Max} for each parameter can be obtained based on its value or description through **Table 8**.

4.3 Multiple regression modelling for the prediction of the advance rate of TBM in hard rock condition

In this paper, based on 2058 datasets collected from section two of the Zagros long tunnel (out of 2168 datasets), linear and non-linear regression analyses were carried out for developing a new model to predict the advance rate of TBM in hard rock conditions. Torque (T_q), cutter head rotation per minute (RPM), cutter normal force (F_n) as machine parameters, and vulnerability in-

Table 9: The discontinuity strike and dip orientation effect in tunnelling (Goodman, 1989)

Strike perpendicular to the tunnel axis		Strike parallel to the tunnel axis	
Drive with dip		Drive against dip	
Dip 45°-90°	Dip 20°-45°	Dip 45°-90°	Dip 20°-45°
Very favorable	Favorable	Fair	Unfavorable
Strike parallel to the tunnel axis		Irrespective of strike	
Dip 20°-45°	Dip 45°-90°	Dip 0°-20°	
Fair	Very unfavorable	Fair	

Table 10: The corresponding VI to parameters' values for one set of data of section two of the Zagros long tunnel

Parameter	RQD (%)	UCS (MPa)	Jc	Jo	Js (cm)	Wt (m)	Per. (m/s)	Wi (lit/min)	Ge (%)	Sq	Mf	Kc	Qc (%)	Cz (m)	Cc (%)
Value or description	72-85	10-20	A1	Un-favorable	300	50	2*10-8	22	<5 (H2S) <10 (CH4)	6.1	Mixed	None	0-5	None	5
Value rating (Pi)	2	3	3	1	2	2	2	2	3	3	0	3	3	3	3
Weighting (ai) (%)	8.6	6.9	8.4	4.7	7.6	7.8	9.6	8	6.3	5.5	2	8.6	3.3	5.5	7
VI	21														

Jc: Joint condition; Jo: Joint orientation; Js: Joint spacing; Wt: Water table; Per.: Permeability; Wi: Water inflow; Ge: Gas emission; Sq.: Squeezing; Mf: Mixed face; Kc: Karstic condition; Qc: Abrasive rocks (quartz contents); CZ: Width of a crushed zone or fractured zone; Cc: Clay contents in mass rock (muddy condition)

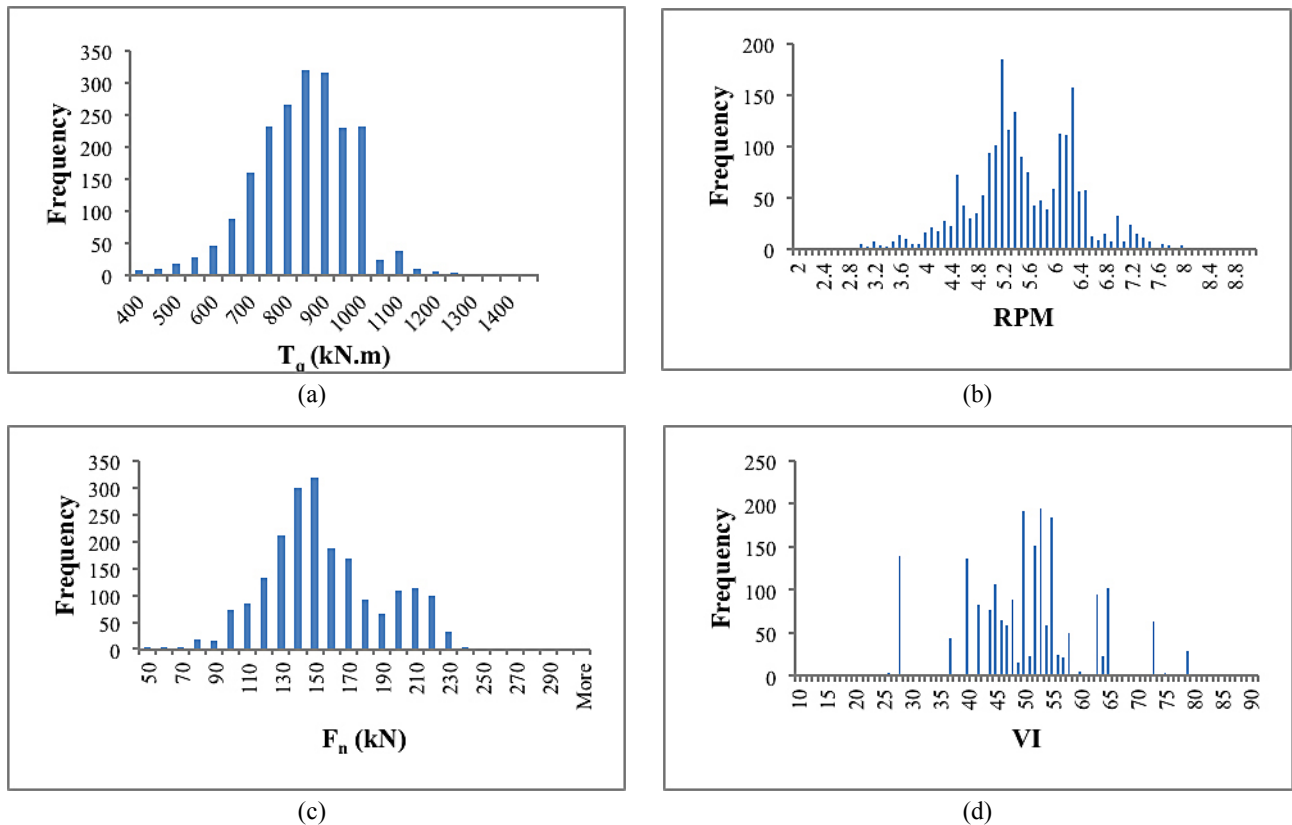


Figure 4: Histogram of (a) T_q , (b) RPM, (c) F_n , (d) VI

dex (VI) as the effect of media characteristics were used as input parameters and Advance Rate (AR) was the output parameter. Data distributions for these parameters

are shown in **Figure 4**. Also, by using the database, a simple regression analysis was performed to identify the relationship between each parameter with AR as shown

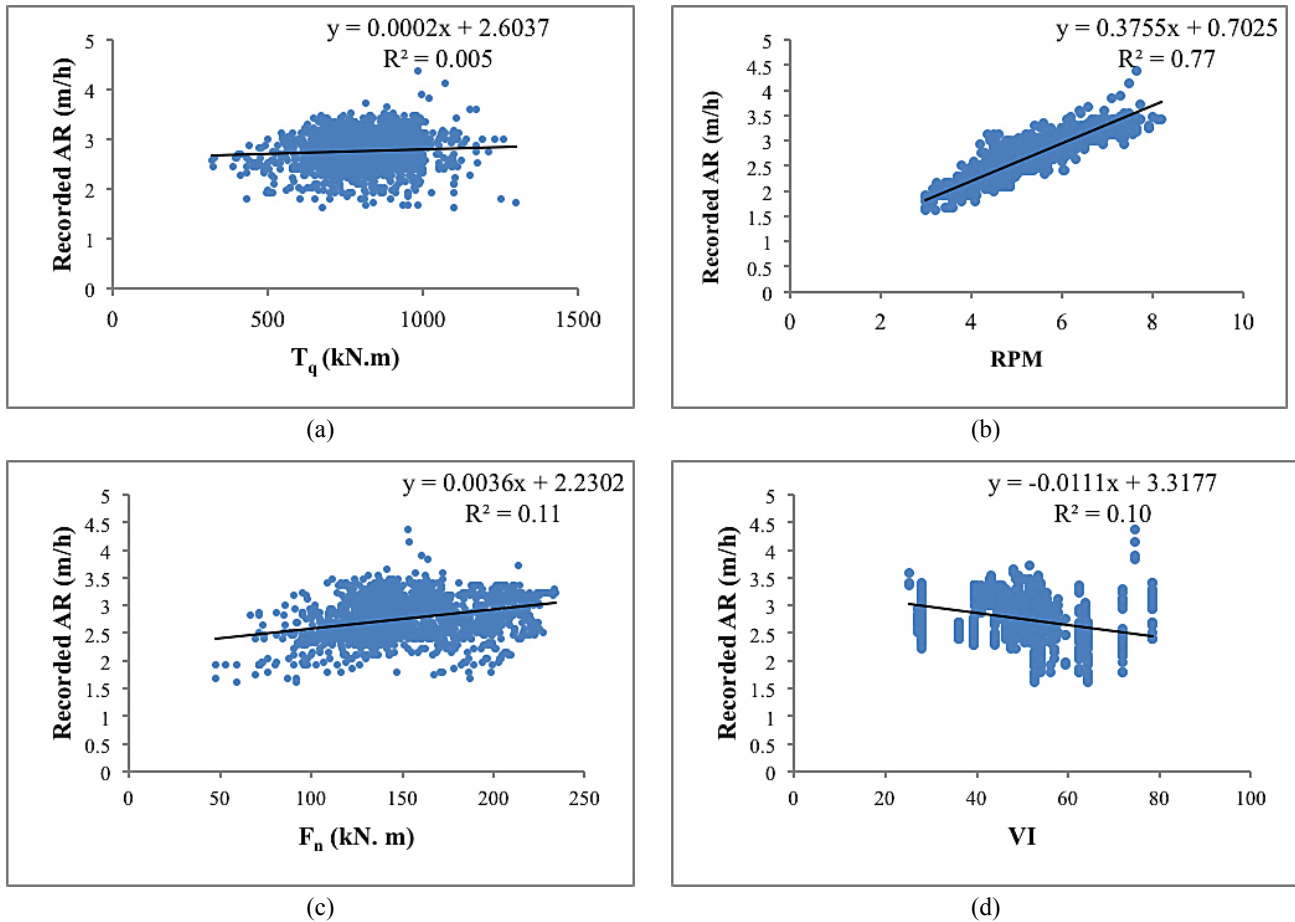


Figure 5: Relationship between (a) T_q , (b) RPM, (c) F_n , (d) VI data and recorded AR

in **Figure 5**. The outcomes obtained show that none of the parameters except RPM individually has a good correlation with AR.

4.3.1. Multiple linear regression analysis

T_q , RPM, F_n , and VI as independent variables and AR as a dependent variable, using SPSS software, were used

to carry out a multiple linear regression analysis. According to the statistical analysis, the predictive model is as shown in **Equation 3**:

$$AR = -0.00004T_q + 0.3662RPM + 0.002F_n - 0.0088VI + 0.9039 \quad (3)$$

Where:

- AR – Advance rate (m/h),
- T_q – Torque (nominal) of the cutterhead (kN.m),
- RPM – Cutter head rotation per minute (rotation/minute),
- F_n – Cutter normal force (kN),
- VI – Index of Vulnerability.

Table 11: Model summary for Equation 3

Model	R	R ²	Adjusted R ²	Std. Error of the Estimate
1	0.935	0.874	0.874	0.12560

Table 12: Coefficients of multiple linear regression and collinearity statistics for Equation 3

Model	Unstandardized Coefficients		Standardized Coefficients	t	Sig.	Collinearity Statistics	
	B	Std. Error	Beta			Tolerance	VIF
(Constant)	0.904	0.028		32.450	0.000		
T_q	-4.954E-5	0.000	-0.019	-2.345	0.019	0.976	1.025
F_n	0.002	0.000	0.197	24.483	0.000	0.946	1.057
RPM	0.366	0.003	0.858	107.655	0.000	0.964	1.038
VI	-0.009	0.000	-0.259	-33.068	0.000	0.996	1.004

The model summary for **Equation 3** is shown in **Table 11**. Also, to check the degree of correlation between input variables, a multicollinearity analysis was carried out. The

Table 13: Variance (ANOVA) analysis for Equation 3

Model	Sum of Squares	df	Mean Square	F	Sig.
Regression	225.086	4	56.272	3.567E3	.000
Residual	32.404	2054	0.016		
Total	257.490	2058			

Variance Inflation Factor (VIF), as one of the most useful tools for finding the level of multicollinearity, was used in this research. Its range varies from one to infinity. In general, VI greater than 10 shows a possibility of multicollinearity (**Montgomery and Peck, 1992**).

The VIF values for independent variables in **Equation 3** were determined and can be observed in **Table 12**. As can be seen from **Table 12**, the VIF for each independent variable in **Equation 3** is less than 10. It shows that there is no high correlation between input independent variables.

Furthermore, analysis of variance (ANOVA) for **Equation 3** is illustrated in **Table 13**. The model statistic

Table 14: TBM performance prediction empirical models

Model	Relation
Graham (1977)	$PR_{ev} = 3940 \times \frac{F_n}{TS}$
Farmer and Glossop (1980)	$PR_{ev} = 624 \times \frac{F_n}{TS}$
Cassinelli et al. (1982)	$PR = -0.0059RSR + 1.5$
Innaurato et al. (1991)	$PR = \sigma_c^{-0.437} - 0.047RSR + 3.15$
Barton, (1999)	$PR = 5 \times Q_{TBM}^{-0.2}$
Hassanpour et al. (2009, 2010)	$FPI = 0.425RMCI + 11.28$ $RMCI = 0.01UCS \times RQD^{\frac{2}{3}}$
Khademi et al. (2010)	$FPI = 4.161 + 0.091UCS + 0.077J_c + 1.077Log(\alpha)$

PR: penetration rate, PRev: penetration per revolution, FPI: field penetration index, F_n : cutter normal force, UCS: uniaxial compressive strength of intact rock, TS: tensile strength, RQD: rock quality designation, RMCI: rock mass cuttability index, σ_c = uniaxial compressive strength of rock, α : the angle between the tunnel axis and the planes of weakness, J_c : RMR joint condition partial rating, RSR: rock structure rating, RMR: rock mass rating, Q_{TBM} : Barton rock mass quality rating for TBM driven tunnels

Table 15: The performance of different models

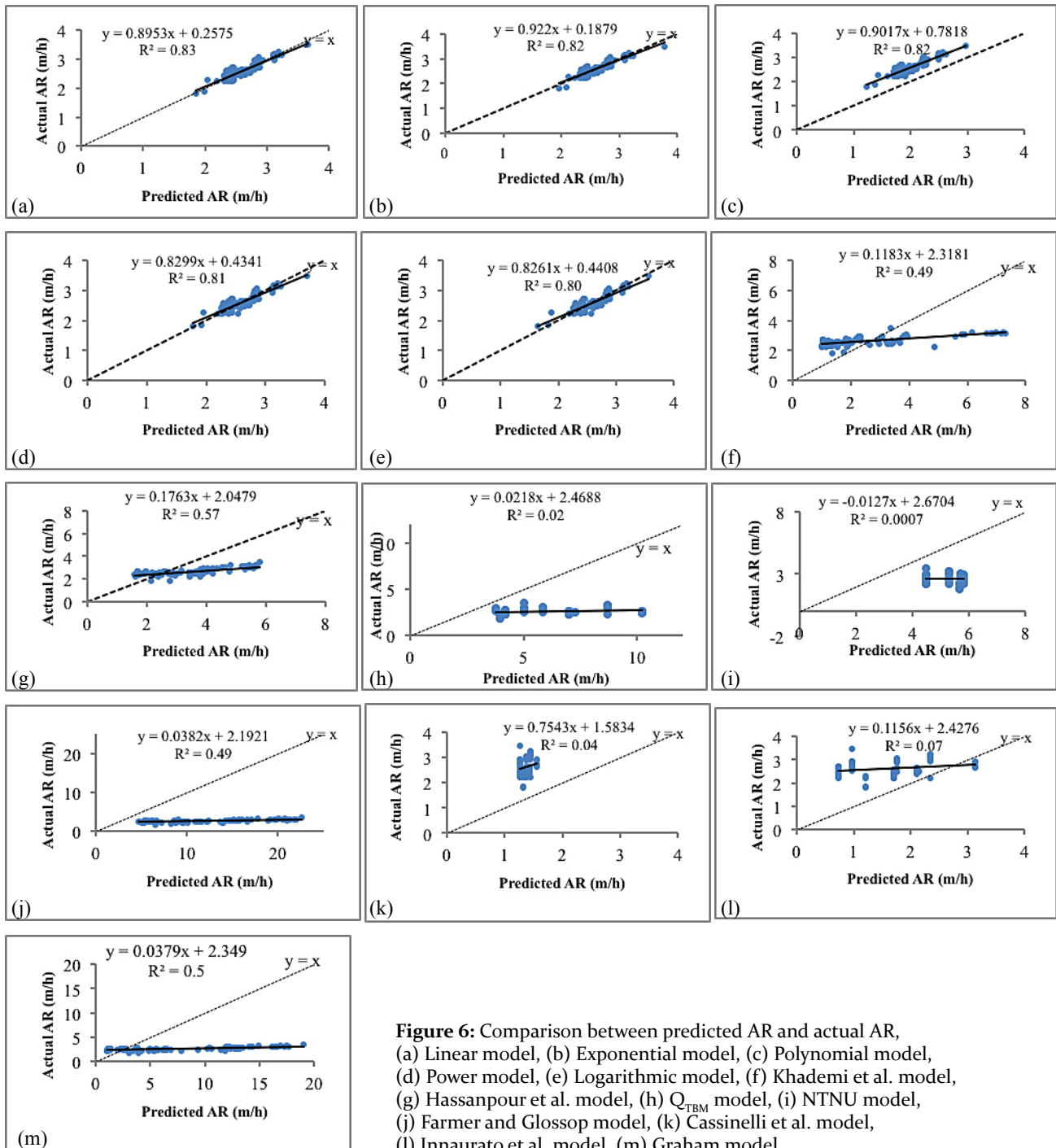
Model	R ²	RMSE	Observations
Linear	0.83	0.12	110
Exponential	0.82	0.13	110
Polynomial	0.82	0.59	110
Power	0.81	0.13	110
Logarithmic	0.80	0.14	110
Hassanpour et al.	0.57	1.15	110
Khademi et al.	0.49	1.48	110
Graham	0.50	2.62	110
Farmer and Glossop	0.49	9.58	110
Innaurato et al.	0.07	1.30	110
Cassinelli et al.	0.04	1.28	110
Q_{TBM}	0.02	4.16	110
NTNU	0.0007	2.61	110

value F and significance (Sig.) are used to provide enough proof to discard the theory of “no effect”. From **Table 13**, F of 0.004 and Sig. of 0.000 (less than 0.05) were obtained, which reveals that the null theory can be discarded. It means that at least one of the input parameters significantly influences the AR.

4.3.2. Multiple non-linear regression modelling

For multiple non-linear regressions modelling, polynomial, power, exponential, and logarithmic models with the same datasets were used. For the polynomial model with R²=0.86 obtained, the mathematical equation is as shown in **Equation 4**:

$$AR = \frac{1.9016}{T_q^{0.07388}} + 1.0445RPM^{0.6195} + 1.8003F_n^{0.1089} + \frac{7.6556}{VI^{0.0593}} - 10.5979 \quad (4)$$



Using, power model, the relation with $R^2=0.87$ is as shown in **Equation 5**:

$$AR = 0.8578 \frac{RPM^{0.7295} F_n^{0.1115}}{T_q^{0.0187} VI^{0.1310}} \quad (5)$$

Furthermore, the mathematical equation for logarithmic model with $R^2=0.85$ is as shown in **Equation 6**:

$$AR = -0.0504 \ln(T_q) + 1.9207 \ln(RPM) + 0.2931 \ln(F_n) - 0.3435 \ln(VI) - 0.2936 \quad (6)$$

Finally, for the exponential model with $R^2=0.87$, the relation is as shown in **Equation 7**:

$$AR = \exp(-0.00002T_q + 0.1320RPM + 0.00076F_n - 0.0033VI + 0.3431) \quad (7)$$

5. Evaluation performance of the models

The performance of regression models were compared with the models from literature such as **Khademi**

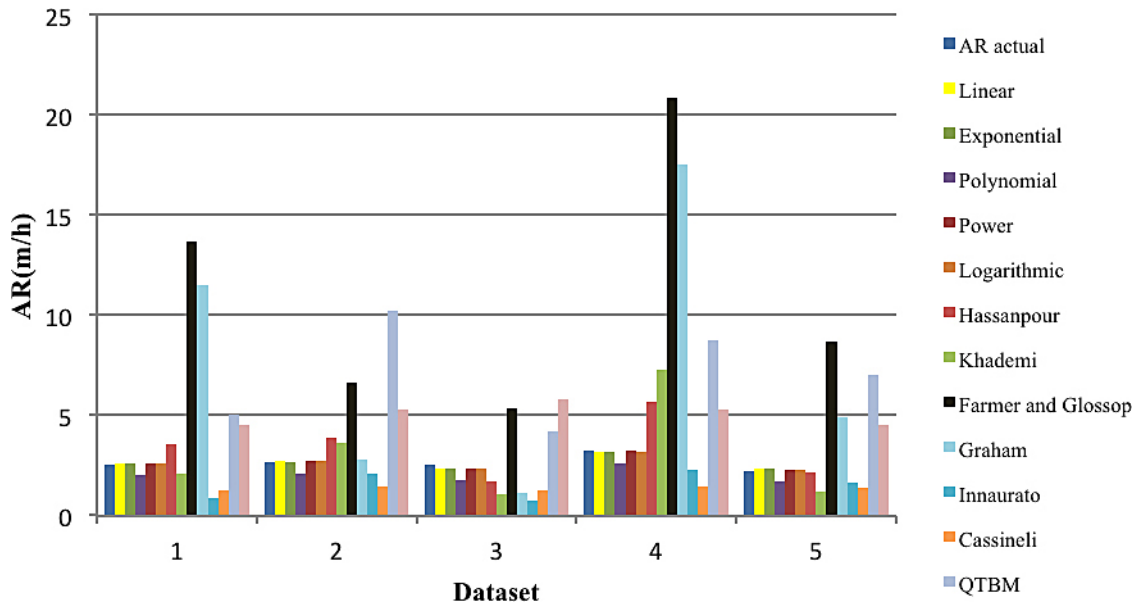


Figure 7: Comparison between the results of different models and recorded AR for five datasets

et al. (2010), Hassanpour et al. (2009, 2010), Q_{TBM} (Barton, 1999), NTNU (Bruland, 2012), Farmer and Glossop (1980), Cassinelli et al. (1982), Innaurato et al. (1991), and Graham (1977) (Table 14), using 110 randomly selected datasets (out of 2168 datasets) from the Zagros long tunnel, which were not used in the modelling. Two signs, the determination coefficient (R^2) and the Root Mean Square Error (RMSE) (Equations 8 and 9) were used to do the models performance evaluation and the results obtained are illustrated in Table 15. The predicted AR from all models for 110 datasets was compared with the recorded AR as shown in Figure 6. The predicted AR from these models for five datasets was compared with the recorded AR as illustrated in Figure 7. As it can be seen from Figure 7 and Table 15 the linear regression model with $R^2=0.83$ and $RMSE=0.12$ shows the best performance among the models.

$x_{ipredicted}$ – The i_{th} predicted element,
 n – The number of datasets.

6. Conclusions

In this research work, using parameters of machine and media characteristics, different models were developed based on linear and non-linear multiple regression analysis to determine the advance rate in rock TBM tunnelling. In the modelling, torque, cutter head rotation per minute, and cutter normal force are machine parameters and the level of geotechnical risks (VI), representing media characteristics, which were used as input parameters and AR was the output parameter. For predicting VI, an RES based model was proposed. The merit of this modelling is that all of the important and easily obtainable parameters affecting geotechnical risks in rock TBM were taken into account.

Validation was carried out, using 110 randomly selected datasets (out of 2168 datasets) from the Zagros long tunnel, which were not used in the modelling. For 110 datasets, recorded AR were compared with the AR estimated through regression models and also with the AR obtained from the models such as Khademi et al., Hassanpour et al., QTBM, NTNU, Farmer and Glossop, Cassinelli et al., Innaurato et al., and Graham. The obtained results showed that the multiple linear regression model with R^2 of 0.83 and RMSE of 0.12 has a better performance among the different models.

As it is evident, the linear regression model was constructed based on site-specific parameters and limited datasets from the Zagros long tunnel. This model can be used to estimate the advance rate in the Zagros long tunnel or tunnels with almost the same ground conditions. However, it cannot be generalized for other tunnel pro-

$$R^2 = \left(\frac{\sum_{i=1}^n (X_{ipredicted} - \bar{X}_{predicted})(X_{iactual} - \bar{X}_{actual})}{\sqrt{\sum_{i=1}^n (X_{ipredicted} - \bar{X}_{predicted})^2 \sum_{i=1}^n (X_{iactual} - \bar{X}_{actual})^2}} \right)^2 \tag{8}$$

Where:

- R^2 – Coefficient of determination,
- $x_{iactual}$ – The i_{th} measured element,
- $x_{ipredicted}$ – The i_{th} predicted element,
- n – The number of datasets.

$$RMSE(x) = \sqrt{\frac{1}{n} \sum_{i=1}^n (X_{iactual} - X_{ipredicted})^2} \tag{9}$$

Where:

- $RMSE$ – Root Mean Square Error,
- $x_{iactual}$ – The i_{th} measured element,

jects. For tunnelling projects with other geological environments, a similar approach with other parameters can be developed.

7. References

- Acaroglu, O., Ozdemir, L. and Asbury, B. (2008): A fuzzy logic model to predict specific energy requirement for TBM performance prediction. *Tunnelling and Underground Space Technology*, 23, 5, 600–608. doi: 10.1016/j.tust.2007.11.003.
- ABROCK Research Project (2013): Analysis and prediction of penetration and cutter wear for TBM-tunneling in hard rock, <https://www.uibk.ac.at/abrock>.
- Aghababaei, S., Jalalifar, H. and Saeedi, G. (2019): Prediction of face advance rate and determination of the operation efficiency in retreat longwall mining panel using rock engineering system. *International Journal of Coal Science and Technology*, 6, 3, 419–429. doi: 10.1007/s40789-019-0245-6.
- Alvarez Grima, M., Bruines, P. A. and Verhoef, P. N. W. (2000): Modelling tunnel boring machine performance by neuro-fuzzy methods. *Tunnelling and Underground Space Technology*, 15, 3, 259–269. doi: 10.1016/S0886-7798(00)00055-9.
- Anagnostou, G. and Kovári, K. (1996): Face stability conditions with earth-pressure-balanced shields. *Tunnelling and Underground Space Technology*, 11, 2, 165–173. doi: 10.1016/0886-7798(96)00017-X.
- Arbabsiar, M.H., Ebrahimi Farsangi, M.A., Mansouri, H. (2020): Fuzzy logic modelling to predict the level of geotechnical risks in rock TBM tunneling. *Rudarsko-geološko-naftni zbornik*. doi: 10.17794/rgn.2020.2.1
- Aydan, Ö., Akagi, T. and Kawamoto, T. (1996): The squeezing potential of rock around tunnels. Theory and prediction with examples taken from Japan. *Rock Mechanics and Rock Engineering*, 29, 3, 125–143. doi: 10.1007/BF01032650.
- Balci, C., Tumac, D., Copur, H., Bilgin, N., Yazgan, S., Demir, E., Aslantas, G. (2009): Performance Prediction and Comparison with In-situ Values of a TBM: a Case Study of Otogar-Bagcilar Metro Tunnel in Istanbul. In: Kocsonya, P (eds.): *Proceeding world tunnel congress*, 23-28 May, Budapest, Hungary.
- Barla, G. (2001): Tunneling under Squeezing Rock Conditions. In: Kolymbas, D. (eds.): *Eurosummer-School in Tunnel Mechanics*. Logos Verlag Berlin, 169-268
- Barla, G. and Pelizza, S. (2000): TBM Tunneling in Difficult Ground Conditions. In: ISRM (eds.): *Proceeding ISRM International Symposium 2000, GeoEng 2000*. Technomic Publishing Co, Melbourne, Australia, November 19-24.
- Barton, N. (1999): TBM performance estimation in rock using Q (TBM). *Tunnels and Tunnelling International*, 31, 9, 30–34.
- Barton N. (2000): TBM Tunneling in Jointed and Faulted Rock. A.A Balkema, Rotterdam, Netherland, 173 p.
- Benardos, A. G. and Kaliampakos, D. C. (2004): A methodology for assessing geotechnical hazards for TBM tunnelling - Illustrated by the Athens Metro, Greece. *International Journal of Rock Mechanics and Mining Sciences*, 41, 6, 987–999. doi: 10.1016/j.ijrmms.2004.03.007.
- Bieniawski, Z. T. (1984): *Rock Mechanics Design in Mining and Tunneling*. A.A Balkema, Rotterdam, 280 p.
- Bieniawski, Z. T. (1989): *Engineering rock mass classifications: a complete manual for engineers and geologists in mining, civil, and petroleum*. John Wiley & Sons, Hoboken, New Jersey, 251 p.
- Bieniawski, Z., Celada, B., Galera, J.M. and Tardáguila, I. (2008): New Applications of the Excavability Index for Selection of TBM Types and Predicting their Performance. In: *Underground Facilities for Better Environment and Safety*. ITA world Tunnel congress. Agra, India, September 19-25, 2008, Balkema, 1618–1629.
- Bieniawski, Z. T., Celada, B. and Galera, J. M. (2007): Predicting TBM excavability. *Tunnels & Tunnelling International*, September, 25–28.
- Bilgin, N., Feridunoglu, C., Tumac, D., Cinar, M., Palakci, Y., Gunduz, O., Ozyol, L. (2005): The Performance of A Full Face Tunnel Boring Machine (TBM) in Tarabya (Istanbul). In: Erdem, Y. and Solak, T. (eds.): *Proceeding of 31st ITA-AITES World Tunnel Congress*, Istanbul, Turkey, 7-12 May 2005, 821-826.
- Bilgin, N., Copur, H., Balci, C., Tumac, D., Akgül, M., Yüksel, Kahriman, A., (2007): The Determination of Some Design Parameters and Performance Prediction of Tunnel Boring Machines (TBM) Based on Rock Cutting Test in Kadikoy-Kartal Metro Tunnels. In: *Proceedings of the 2nd symposium on Underground Excavations for Transportation*, 15–17 November 2007, Istanbul, Turkey, 63–71.
- Bilgin, N., Balci, C., Copur, H., Tumac, D., Avunduk, E., (2012): Rock Mechanic Aspects Related to Cutting Efficiency of Mechanical Excavators, 25 Years of Experience in Istanbul. In: BeFo (eds.): *ISRM International Symposium, EUROCK 2012*, 28-30 May, Stockholm, Sweden.
- Blindheim, O. T. (1979): *Boreability Predictions for Tunneling*. Ph.D thesis. The Norwegian Institute of Technology, Trondheim, Norway.
- Bruland, A. (2012): *Hard Rock Tunnel Boring Machines*. Ph.D thesis. The Norwegian Institute of Technology (NTNU), Trondheim, Norway.
- Cancelli, A. and Crosta, G. B. (1993): Hazard and Risk Assessment in Rockfall Prone Areas. In: Skip, B.O. (ed): *Risk Reliability in Ground Engineering*. Thomas Telford, London, 1993, 177–190.
- Cassinelli, F., Cina, S., Innaurato, N., Mancini, R. and Sampaolo, A. (1982): Power Consumption and Metal Wear in Tunnel-Boring Machines: Analysis of Tunnel-Boring Operation in Hard Rock. In: Jones M.J (eds.): *Proceedings Tunneling'82*. Institute of Mining and Metallurgy, London, 73–81.
- Crow, S. C. (1975): Jet tunnelling machines: a guide for design. *Tunnels and Tunnelling*, 7, 2, 23-37.
- Dalgic, S. (2003): Tunneling in fault zones, Tuzla tunnel, Turkey. *Tunnelling and Underground Space Technology*, 18, 5, 453–465. doi: 10.1016/S0886-7798(03)00045-2.
- DAUB. (1997): *Recommendations for Selecting and Evaluating Tunnel Boring Machines*, Deutscher Ausschuss für un-

- terirdisches Bauen e. V. (DAUB), German Tunneling Committee (ITA-AITES).
- Delisio, A. and Zhao, J. (2013): Review of the TBM Performance in Blocky Rocks with Potential Face Stability Issues. In: *Underground - The Way to the Future: Proceedings of the World Tunnel Congress. WTC 2013, Geneva, Switzerland, May 31- June 7, 2013*, 1179–1186. doi: 10.1201/b14769-162.
- Faramarzi, F., Mansouri, H. and Farsangi, M. A.E. (2013): A rock engineering systems based model to predict rock fragmentation by blasting. *International Journal of Rock Mechanics and Mining Sciences*, 60, 82–94. doi: 10.1016/j.ijrmms.2012.12.045.
- Farmer, I. W. and Glossop, N. H. (1980): Mechanics of disk cutter penetration. *Tunnels and Tunnelling International*, 12, 6, 22–25. doi: 10.1016/0148-9062(80)90769-x.
- Farrokh, E., Mortazavi, A. and Shamsi, G. (2006): Evaluation of ground convergence and squeezing potential in the TBM driven Ghomroud tunnel project. *Tunnelling and Underground Space Technology*, 21, 5, 504–510. doi: 10.1016/j.tust.2005.09.003.
- Farrokh, E. (2018): Introducing hard rock TBMs' downtime analysis model with reference to past case histories' data. *Journal of Mining and Environment*, 9, 2, 457–472. doi: 10.22044/jme.2018.6815.1509.
- Farrokh, E., Rostami, J. and Laughton, C. (2012): Study of various models for estimation of penetration rate of hard rock TBMs. *Tunnelling and Underground Space Technology*, Elsevier Ltd, 30, 110–123. doi: 10.1016/j.tust.2012.02.012.
- Fattahi, H. and Moradi, A. (2017): Risk assessment and estimation of TBM penetration rate using RES-Based model. *Geotechnical and Geological Engineering*, 35, 1, 365–376. <https://doi.org/10.1007/s10706-016-0111-x>
- Fattahi, H. and Babanouri, N. (2017): Applying optimized support vector regression models for Prediction of tunnel boring machine performance. *Geotechnical and Geological Engineering*, Springer International Publishing, 35, 5, 2205–2217. doi: 10.1007/s10706-017-0238-4.
- Ghasemi, E., Yagiz, S. and Ataei, M. (2014): Predicting penetration rate of hard rock tunnel boring machine using fuzzy logic. *Bulletin of Engineering Geology and the Environment*, 73, 1, 23–35. doi: 10.1007/s10064-013-0497-0.
- Goel, R. K., Jethwa, J. L. and Paithankar, A. G. (1995): Tunneling through the young Himalayas - A case history of the Maneri-Uttarkashi power tunnel. *Engineering Geology*, 39, 1–2, 31–44. doi: 10.1016/0013-7952(94)00002-J.
- Gong, Q. M. and Zhao, J. (2007): Influence of rock brittleness on TBM penetration rate in Singapore granite. *Tunnelling and Underground Space Technology*, 22, 3, 317–324. doi: 10.1016/j.tust.2006.07.004.
- Gong, Q. M. and Zhao, J. (2009): Development of a rock mass characteristics model for TBM penetration rate prediction. *International Journal of Rock Mechanics and Mining Sciences*, 46, 1, 8–18. doi: 10.1016/j.ijrmms.2008.03.003.
- Goodman, R. (1989): *Introduction to Rock Mechanics*. John Wiley & Sons, Hoboken, New Jersey, 576 p.
- Graham, P. C. (1977): Rock Exploration for Machine Manufacturers. In: Bieniawski, Z. T. (eds.): *Exploration for Rock Engineering*. Balkema, Rotterdam, 173–180.
- Hassanpour, J., Rostami, J., Khamehchiyan, M. and Bruland, A. (2009): Developing new equations for TBM performance prediction in carbonate-argillaceous rocks: A case history of Nowsod water conveyance tunnel. *Geomechanics and Geoengineering*, 4, 4, 287–297. doi: 10.1080/17486020903174303.
- Hassanpour, J., Rostami, J., Khamehchiyan, M., Bruland, A. and Tavakoli, H.R. (2010): TBM performance analysis in pyroclastic rocks: A case history of Karaj Water conveyance tunnel. *Rock Mechanics and Rock Engineering*, 427–445. doi: 10.1007/s00603-009-0060-2.
- Hassanpour, J., Rostami, J. and Zhao, J. (2011): A new hard rock TBM performance prediction model for project planning. *Tunnelling and Underground Space Technology*, 26, 5, 595–603. doi: 10.1016/j.tust.2011.04.004.
- Hassanpour, J., Vanani, A.A.G., Rostami, J., Cheshomi, A. (2016): Evaluation of common TBM performance prediction models based on field data from the second lot of Zagros water conveyance tunnel (ZWCT2). *Tunnelling and Underground Space Technology*, Elsevier Ltd, 52, 147–156. doi: 10.1016/j.tust.2015.12.006.
- Hoek, E. and Marinos, P. (2000): Predicting tunnel squeezing problems in weak heterogeneous rock masses. *Tunnels and Tunnelling International*, 32, 45–51.
- Howarth, D. F., Adamson, W. R. and Berndt, J. R. (1986): Correlation of model tunnel boring and drilling machine performances with rock properties. *International Journal of Rock Mechanics and Mining Sciences*, 23, 2, 171–175. doi: 10.1016/0148-9062(86)90344-X.
- Hudson, J. (1992): *Rock Engineering Systems, Theory and Practice*. Ellis Horwood, Chichester, 196 p.
- Hughes, H. M. (1986): The relative cuttability of coal-measures stone. *Mining Science and Technology*, 3, 2, 95–109. doi: 10.1016/S0167-9031(86)90250-1.
- Industrial Training Branch of the National Coal Board. (1981), *Mine Gases*, National Coal Board of USA.
- Innaurato, N., Mancini, R., Rondena, E., Zaninetti, A. (1991): Forecasting and Effective TBM Performances in a Rapid Excavation of a Tunnel in Italy. In: Wittke, W. (eds.): *7th International Congress on Rock Mechanics*. Aachen, Germany. 1009-1014. doi: 10.1016/0148-9062(93)92171-L.
- Jethwa, J. L., Singh, B. and Singh, B. (1984): Estimation of Ultimate Rock Pressure for Tunnel Linings under Squeezing Rock Conditions, A New Approach. In: Brown, E.T., and Hudson, J.A. (eds.): *Design and Performance of Underground Excavations*. ISRM Symposium, Cambridge, U.K., September 3-4, 1984, 231–238.
- Jung, H. S., Choi, J. M., Chun, B. S., Park, J. S. and Lee, Y. J. (2011): Causes of reduction in shield TBM performance - A case study in Seoul. *Tunnelling and Underground Space Technology*, 26, 3, 453–461. doi: 10.1016/j.tust.2011.01.001.
- Khademi Hamidi, J., Shahriar, K., Rezai, B. and Rostami, J. (2010c): Performance prediction of hard rock TBM using rock mass rating (RMR) system. *Tunnelling and Under-*

- ground Space Technology, 25, 4, 333–345. doi: 10.1016/j.tust.2010.01.008.
- Lar Consulting Engineers. (2003): Geotechnical engineering study of Zagros long tunnel, Lar consulting engineers, Tehran, Iran. (*In Persian- there is no English abstract*)
- Lar consulting engineers. (2004): Geotechnical Engineering Study of Zagros Long Tunnel, Lar consulting engineers, Tehran, Iran. (*In Persian- there is no English abstract*)
- Latham, J. P. and Lu, P. (1999): Development of an assessment system for the blastability of rock masses. *International Journal of Rock Mechanics and Mining Sciences*, 36, 1, 41–55. doi: 10.1016/S0148-9062(98)00175-2.
- Lu, P., Hudson, J.A. (1993): A Fuzzy Evaluation Approach to the Stability of Underground Excavations. In: Ribeiro, L., Sousa, E., Grossmann, N. F. (eds.): *ISRM Symposium: EUROCK 93*. Balkema, Rotterdam, 615–622.
- Lu, P. and Latham, J. (1994): A Continuous Quantitative Coding Approach to the Interaction Matrix in Rock Engineering Systems Based on Grey Systems Approaches. In: Oliveira, R. (eds.): *Seventh International Congress, International Association of Engineering Geology*, Lisbon, Portugal, 5-9 September 1994, 4761–4770.
- Marinos, P. G. (2001): Tunneling and Mining in Karstic terrain, an Engineering Challenge. In: Beck, B.F., and Herring, J.G. (eds.): *Geotechnical and Environmental Applications of Karst Geology and Hydrology*. Swets and Zeitlinger, Lisse, Louisville, United State, April 1-4, 3–16.
- Mazzoccola, D. F. and Hudson, J. A. (1996): A comprehensive method of rock mass characterization for indicating natural slope instability. *Quarterly Journal of Engineering Geology*, 29, 1, 37–56. doi: 10.1144/GSL.QJEGH.1996.029.P1.03.
- McFeat-Smith, I. (1977): Rock Property Testing for the Assessment of Tunneling Machine Performance. *Tunnels Tunneling*, 9, 2, 29–33. doi: 10.1016/0148-9062(77)90102-4.
- Montgomery, D.C., Peck, E.A. (1992): *Introduction to Linear Regression Analysis*, Wiley, New York, 544 p.
- Moradi, M.R. and Farsangi, M.A.E. (2014): Application of the risk matrix method for geotechnical risk analysis and prediction of the advance rate in rock TBM tunneling. *Rock Mechanics and Rock Engineering*, 47, 1951–1960. <https://doi.org/10.1007/s00603-013-0464-x>
- Namli, M. and Bilgin, N. (2017): A model to predict daily advance rates of EPB-TBMs in a complex geology in Istanbul. *Tunnelling and Underground Space Technology*. Elsevier Ltd, 62, 43–52. doi: 10.1016/j.tust.2016.11.008.
- Ozdemir, L. (1977): Development of Theoretical Equations for Predicting Tunnel Boreability. Ph.D thesis. Colorado school of mines, USA.
- Ozdemir, L., Miller, R., Wang, F.D. (1978): Mechanical tunnel boring prediction and machine design annual report. *International Journal of Rock Mechanics and Mining Sciences & Geomechanics Abstracts*, 15, 5, A105. doi: 10.1016/0148-9062(78)91060-4.
- Palmström, A. (1995): *RMi – A Rock Mass Characterization System for Rock Engineering Purposes*. Ph.D thesis, Oslo University, Norway, 1995, 400 p.
- Pang, S. S., Goldsmith, W. and Hood, M. (1989): A force-indentation model for brittle rocks. *Rock Mechanics and Rock Engineering*, 22, 2, 127–148. doi: 10.1007/BF01583958.
- Ping, L. (1993): A Fuzzy Evaluation Approach to the Stability of Underground Excavations. In: Ribeiro, E., Sousa, L., Grossmann, N.F. (eds): *Proceeding ISRM International Symposium-EUROCK 93*. International Society for Rock Mechanics. 21-24 June 1993, Lisbon, Portugal, 615–622.
- Ramoni, M. and Anagnostou, G. (2010): Tunnel boring machines under squeezing conditions. *Tunnelling and Underground Space Technology*, 25, 2, 139–157. doi: 10.1016/j.tust.2009.10.003.
- Rostami, J. (1997) Development of a Force Estimation Model for Rock Fragmentation with Disc Cutters through Theoretical Modeling and Physical Measurement. Ph.D thesis, Colorado school of mines, USA.
- Rostami, J. (2015): Performance prediction of hard rock Tunnel Boring Machines (TBMs) in difficult ground. *Tunnelling and Underground Space Technology*. Elsevier Ltd, 57, 173–183. doi: 10.1016/j.tust.2016.01.009.
- Rostami, J. and Ozdemir, L. (1993): New Model for Performance Prediction of Hard Rock TBMs. In: Bowerman, L. D. (eds.): *Proceedings - Rapid Excavation and Tunneling Conference*, Boston, 13-17 June, 793–809.
- Roxborough, F. F. and Phillips, H. R. (1975): Rock excavation by disc cutter. *International Journal of Rock Mechanics and Mining Sciences and*, 12, 12, 361–366. doi: 10.1016/0148-9062(75)90547-1.
- Salimi, A., Rostami, J., Moormann, C., Delisio, A. (2017): Examining Feasibility of Developing a Rock Mass Classification for Hard Rock TBM Application Using Non-linear Regression, Regression Tree and Generic Programming. *Geotechnical and Geological Engineering*, Springer International Publishing, 1–15. doi: 10.1007/s10706-017-0380-z.
- Sanio, H. P. (1985): Prediction of the performance of disc cutters in anisotropic rock. *International Journal of Rock Mechanics and Mining Sciences and*, 22, 3, 153–161. doi: 10.1016/0148-9062(85)93229-2.
- Sapigni, M., Berti, M., Bethaz, E., Busillo, A., Cardone, G. (2002): TBM performance estimation using rock mass classifications. *International Journal of Rock Mechanics and Mining Sciences*, 39, 6, 771–788. doi: 10.1016/S1365-1609(02)00069-2.
- Sato, K., Gong, F. M. and Itakura, K. (1991): Prediction of Disc Cutter Performance using Circular Rock Cutting Rig. In: Ozdemir, L., King, R., Hanna, K., (eds.): *Proceeding International Symposium on Mine Mechanization and Automation*. Golden Colorado June 10-13, 1991, 1.31-1.40.
- Shang, Y., Xue, J., Wang, S., Yang, Z. and Yang, J. (2004): A case history of tunnel boring machine jamming in an inter-layer shear zone at the Yellow river diversion project in China. *Engineering Geology*, 71, 3–4, 199–211. doi: 10.1016/S0013-7952(03)00134-0.
- Shaterpour Mamaghani, A., Tumac, D., Avunduk, E. (2015): Double shield TBM performance analysis in difficult ground conditions: a case study in the Gereede water tunnel,

- Turkey. Bulletin of Engineering Geology and the Environment, 75, 1, 10.1007/s10064-015-0743-8.
- Shin, H. S., Kwon, Y. C., Jung, Y. S., Bae, G. J. and Kim, Y. G. (2009): Methodology for quantitative hazard assessment for tunnel collapses based on case histories in Korea. International Journal of Rock Mechanics and Mining Sciences, 46, 6, 1072–1087. doi: 10.1016/j.ijrmms.2009.02.009.
- Singh, B., Jethwa, J. L., Dube, A. K. and Singh, B. (1992): Correlation between observed support pressure and rock mass quality. Tunnelling and Underground Space Technology incorporating Trenchless, 7, 1, 59–74. doi: 10.1016/0886-7798(92)90114-W.
- Snowdon, R. A., Ryley, M. D. and Temporal, J. (1982): A study of disc cutting in selected British rocks. International Journal of Rock Mechanics and Mining Sciences and, 19, 3, 107–121. doi: 10.1016/0148-9062(82)91151-2.
- Tumac, D., Balci, C., Bilgin, N., Copur, H. (2012): Comparison of Cutting Forces for V-type Disc Cutter and Performance Prediction of TBM Using Portable Linear Rock Cutting Machine (PLCM). In: 7th Asia Rock Mechanic Symposium (ARMS2012), Seoul, Korea, 15-19 October, 1156-1165
- Yagiz, S. (2002): Development of Rock Fracture and Brittleness Indices to quantify the Effects of Rock Mass Features and Toughness in the CSM Model Basic Penetration for Hard Rock Tunneling Machines. Ph.D thesis, Colorado school of mines, USA.
- Yagiz, S. (2008): Utilizing rock mass properties for predicting TBM performance in hard rock condition. Tunnelling and Underground Space Technology, 23, 3, 326–339. doi: 10.1016/j.tust.2007.04.011.
- Yagiz, S., Gokceoglu, C., Sezer, E. and Iplikci, S. (2009): Application of two non-linear prediction tools to the estimation of tunnel boring machine performance. Engineering Applications of Artificial Intelligence, 22, 4–5, 818–824. doi: 10.1016/j.engappai.2009.03.007.
- Yagiz, S. and Karahan, H. (2011): Prediction of hard rock TBM penetration rate using particle swarm optimization. International Journal of Rock Mechanics and Mining Sciences, 48, 3, 427–433. doi: 10.1016/j.ijrmms.2011.02.013.
- Yagiz, S. and Ozdemir, L. (2001): Geotechnical Parameters Influencing the TBM Performance in Various Rocks. In Miller, J.D. (eds.): program with abstract, 44th Annual Meeting of Association of Engineering Geologists. Saint Louis, Missouri, USA.
- Zhao, Z., Gong, Q., Zhang, Y. and Zhao, J. (2007): Prediction model of tunnel boring machine performance by ensemble neural networks. Geomechanics and Geoengineering, 2, 2, 123–128. doi: 10.1080/17486020701377140.

SAŽETAK

Novi model za predviđanje napredovanja tunelskoga bušaćeg stroja u tvrdim stijenama

Predviđanje brzine napredovanja tunelskoga bušaćeg stroja u tvrdim stijenama jedna je od najvažnijih stvari kod procjene vremena i troškova izradbe tunela. Prikazana je priprema stijenskoga inženjerskog sustava, modela kojim se predviđa geotehnički rizik (ovisan o svojstvima stijena) kod izradbe tunela bušaćim strojevima. Uporabljeno je 15 varijabli koje utječu na spomenuti rizik. Na temelju 5 ekspertnih mišljenja postavljena je interakcijska matrica i rangiranje varijabli. Indeks ranjivosti, kao izvedenica geotehničkoga rizika, izračunan je za 2058 (od ukupno 2168) skupova podataka, uzorkovanih u 55 geoloških zona kroz 11 km dugačak tunel Zagros. U sljedećemu koraku proučeni su operativni parametri strojeva poput okretnoga momenta, rotacije glave sjekača po minuti, sile na glavi te svojstava stijena (prikazanih indeksom ranjivosti). Oni su bili ulazne varijable, a iznos napredovanja izlazna. Na temelju 2058 podataka izračunane su linearne i nelinearne višestruke regresije. Dodatnih 110 podataka (nisu korišteni za modeliranje) uporabljeni su za provjeru regresijskih (i drugih) modela. Rezultati su pokazali kako novi linearni model, s vrijednostima $R^2 = 0,83$ i $RMSE = 0,12$, ima bolja svojstva nego drugi razmatrani modeli.

Ključne riječi:

iznos napredovanja, regresijski model, geotehnički rizik, inženjerski sustav stijena, bušenje u tvrdim stijenama, tunel Zagros

Authors contribution

Mohammad Hossein Arbabsiar (Ph.D. candidate) initialized the idea, completed literature review and participated in all work stages, such as data analysis and fieldwork and executed data analysis and tested its accuracy. **Mohammad Ali Ebrahimi Farsangi** (Associate Professor) and **Hamid Mansouri** (Associate Professor) managed the whole process and supervised it from the beginning to the end.