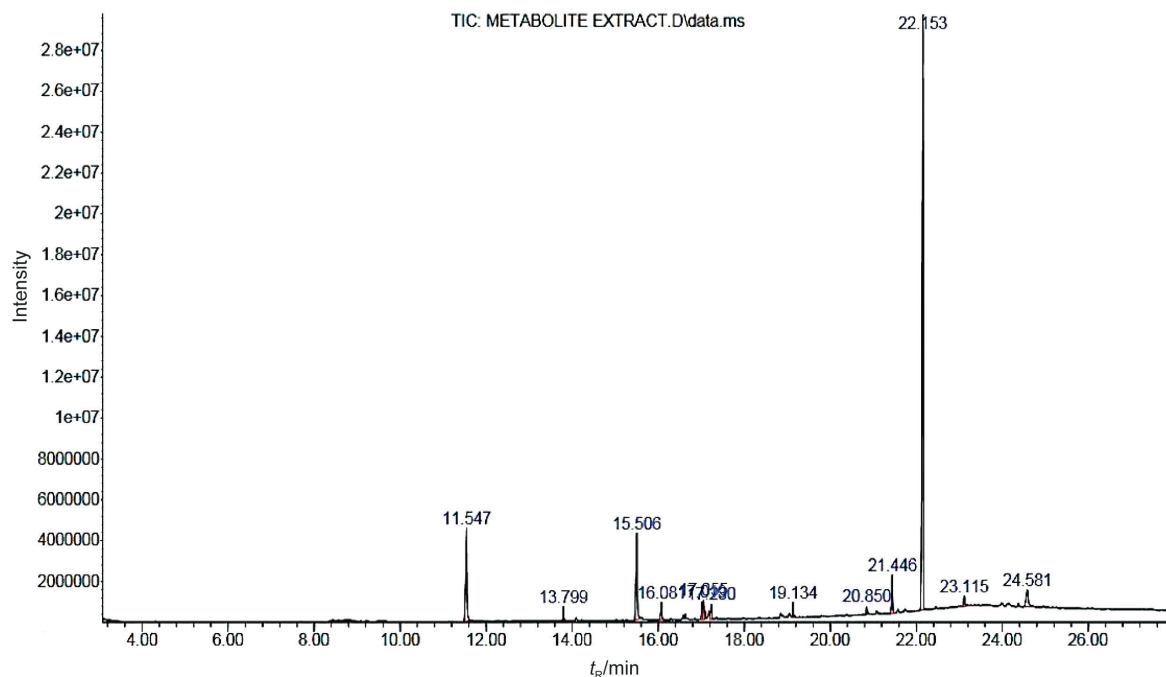
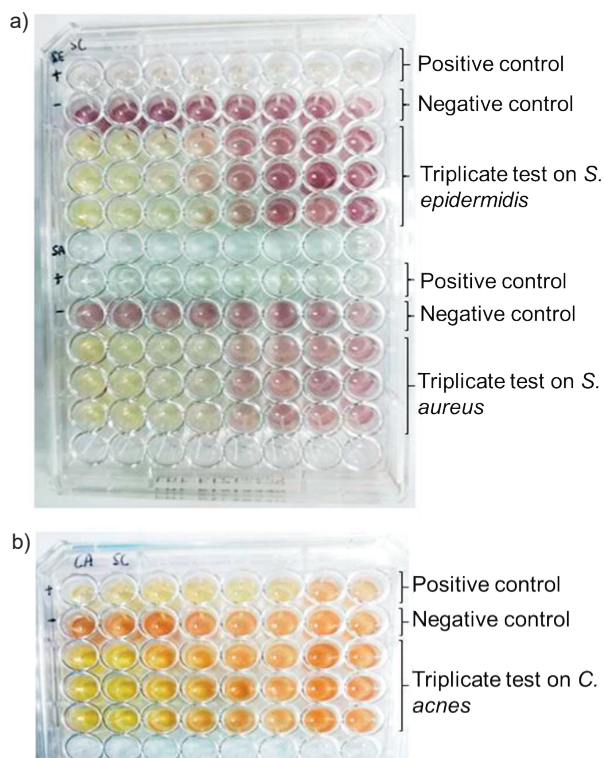


Back to article



**Fig. S1.** The chromatogram of the extracted secondary metabolites from *S. cerevisiae*

Back to article



**Fig. S2.** Growth in microplate with a gradient concentration of *S. cerevisiae* extract after the addition of iodinitrophenyltetrazolium violet (INT) of: a) *S. epidermidis* (above) and *S. aureus* (below), and b) colour changes of INT in *C. acnes*