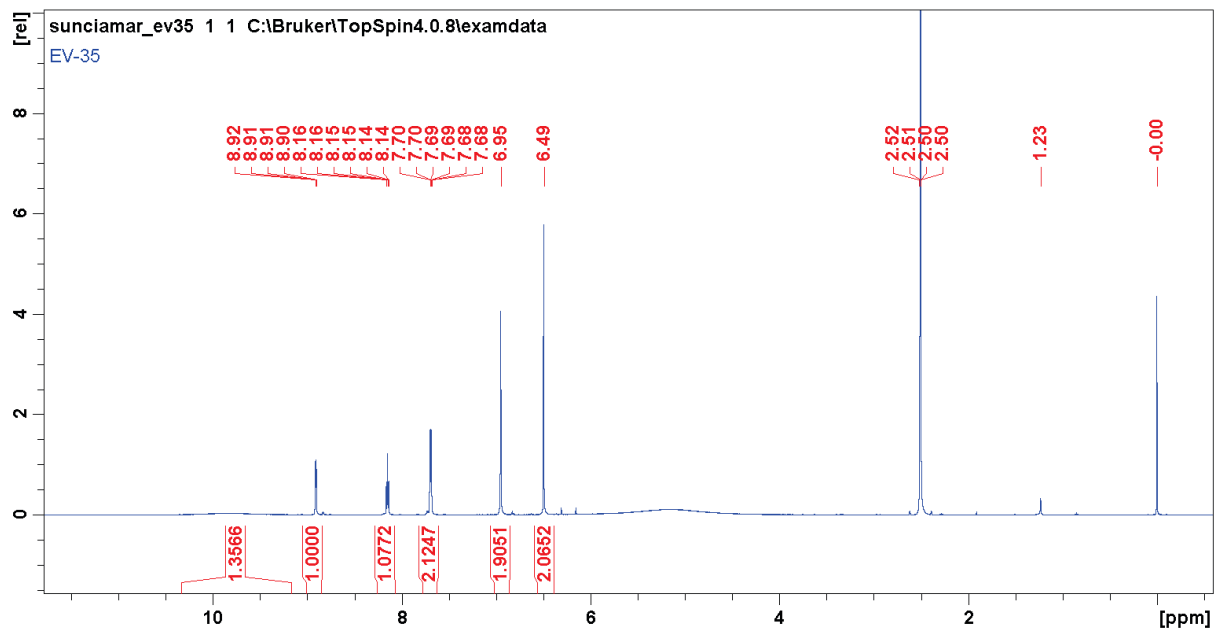
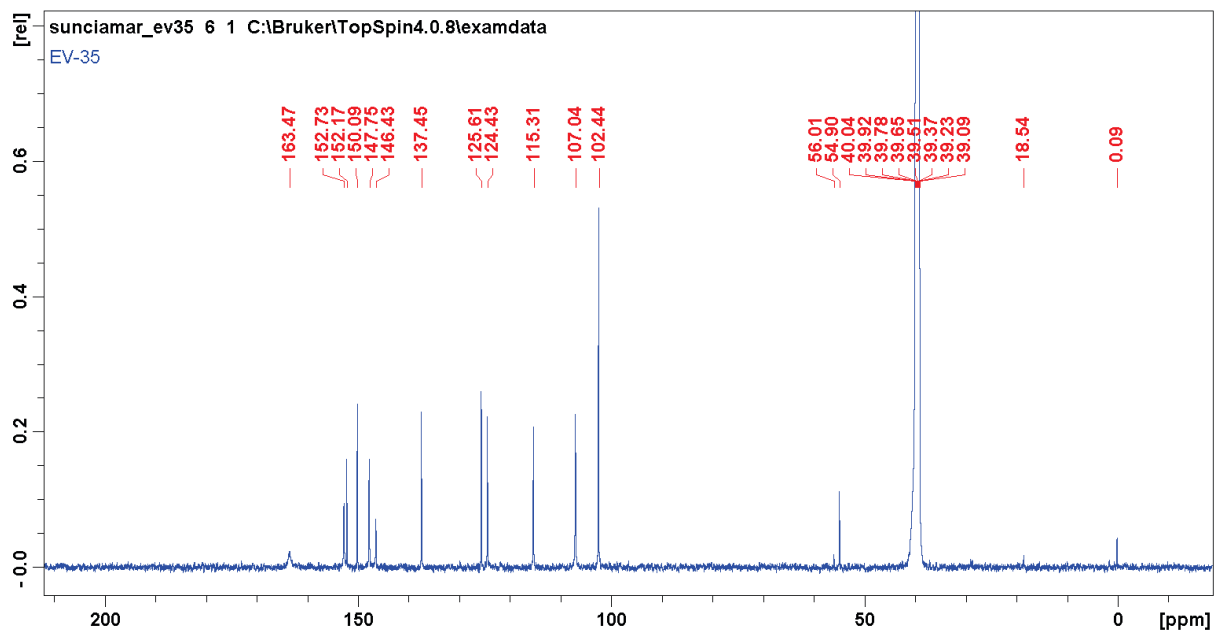


## Supplementary Material

$^1\text{H}$  and  $^{13}\text{C}$  nuclear magnetic resonance (NMR) spectra and elemental analyses of compounds **17** and **18**

### Compound **17**

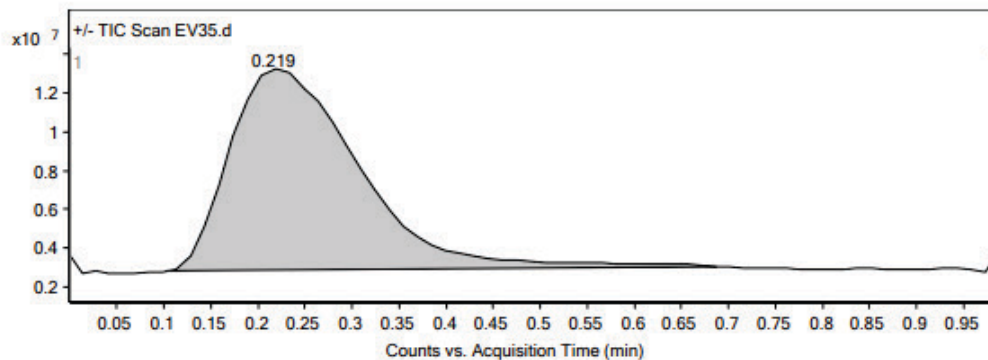


## Qualitative Analysis Report

<b>Data File</b>	EV35.d	<b>Sample Name</b>	sample
<b>Sample Type</b>	Sample	<b>Position</b>	Vial 28
<b>Instrument Name</b>	LCMS1	<b>User Name</b>	
<b>Acq Method</b>		<b>Acquired Time</b>	11/18/2019 10:15:06 AM (UTC+01:00)
<b>IRM Calibration Status</b>	Not Applicable	<b>DA Method</b>	Default Lidija.m
<b>Comment</b>		<b>Info.</b>	
<b>Sample Group</b>		<b>User Defined 2</b>	
<b>User Defined 1</b>			
<b>Acquisition Time (Local)</b>	11/18/2019 10:15:06 AM (UTC+01:00)		

## Chromatograms

Fragmentor Voltage    Collision Energy    0    Ionization Mode    ESI



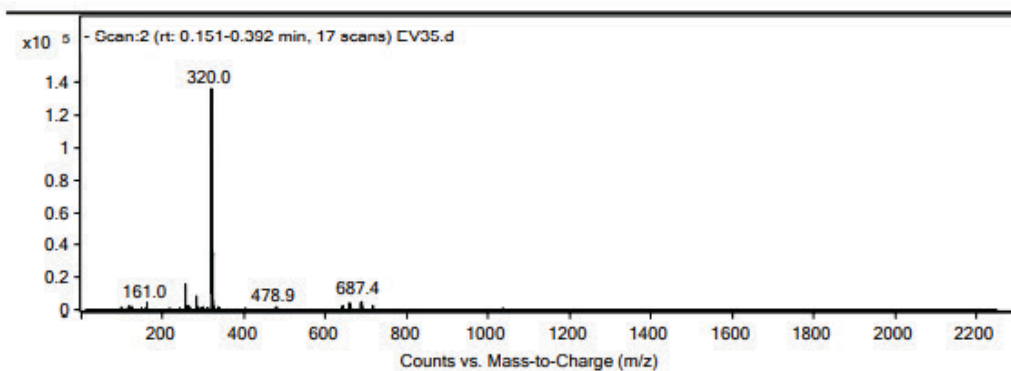
## Integration Peak List

Peak	Start	RT	End	Height	Area	Area %
1	0.103	0.219	0.686	10393940.35	99995936.99	100

## Spectra

Spectrum Source	Fragmentor Voltage	Collision Energy	Ionization Mode
Peak (1) in "+/- TIC Scan"		0	ESI

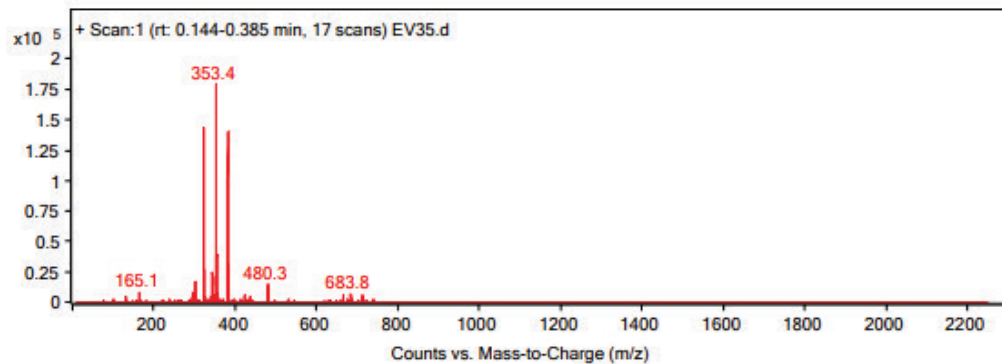
## Qualitative Analysis Report



**Peak List**

m/z	z	Abund
161		4483.23
255.2	1	15690.41
256.2	1	2619.46
283.2	1	8451.35
320	1	135537.25
321	1	35378.14
322	1	6142.19
659.4	1	4415.23
687.4	1	5491.15
715.3		2723.79

Spectrum Source	Fragmentor Voltage	Collision Energy	Ionization Mode
Peak (1) in "+/-" TIC Scan"		0	ESI



**Peak List**

m/z	z	Abund
165.1		7683.45
301.3	1	16218.84
322.3	1	14379.25

## Qualitative Analysis Report

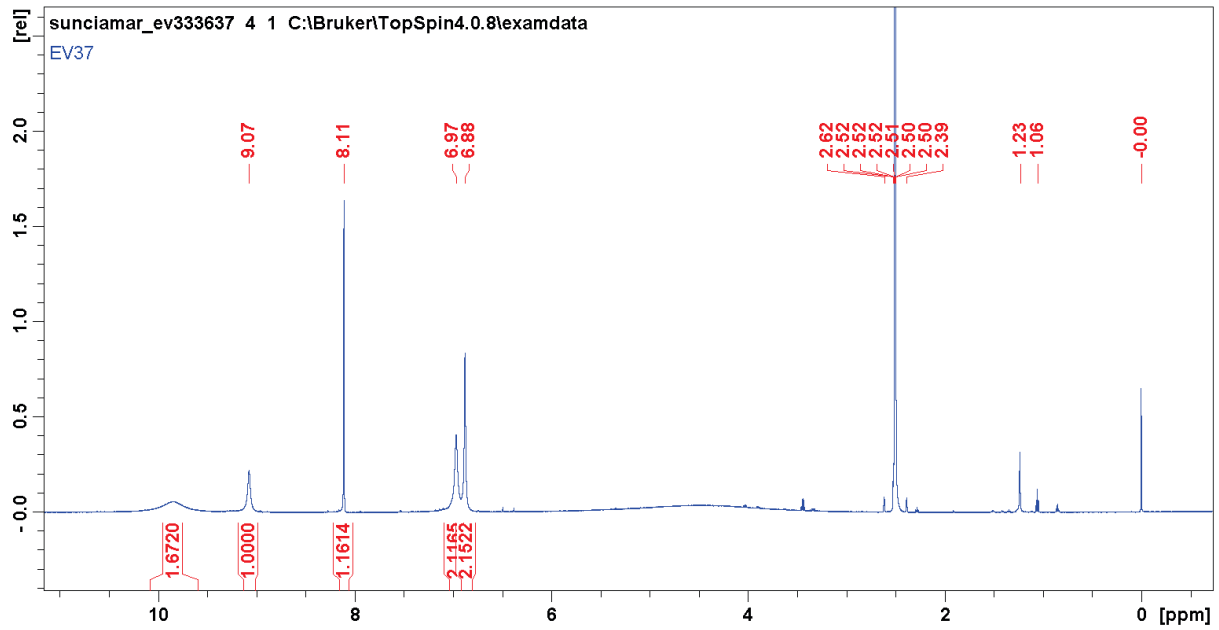
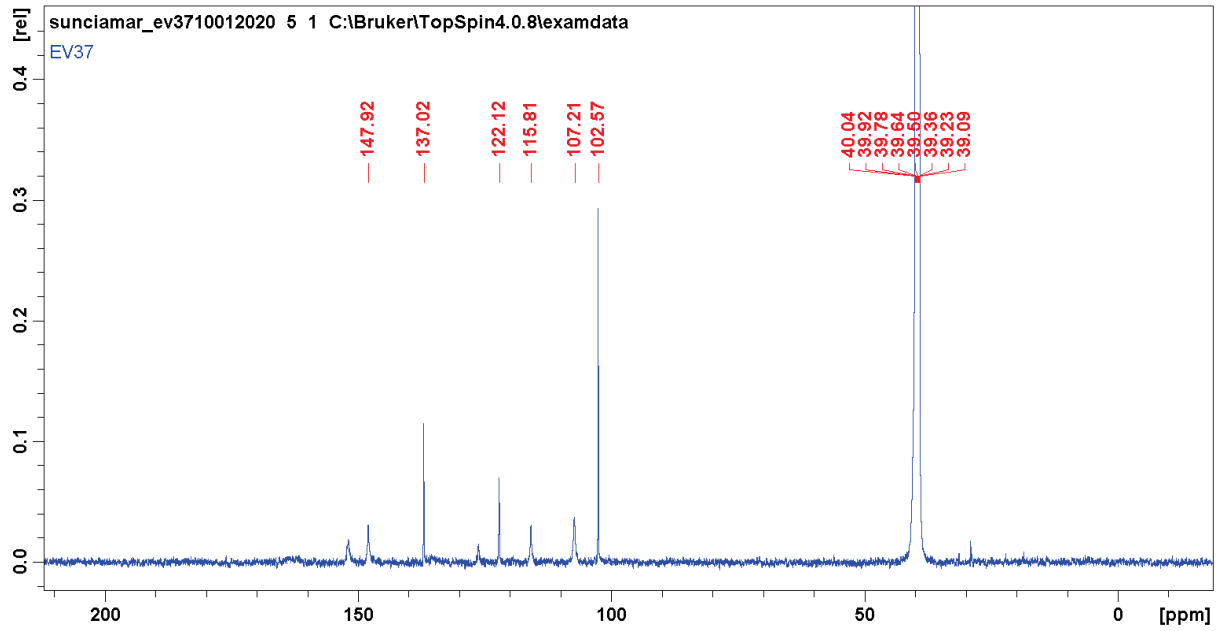
---

323.3	1	26740.4
344.2	1	24849.54
353.4	1	179367.84
354.5	1	38626.65
381.5	1	140321.25
382.5	1	29884.06
480.3	1	14450.85

--- End Of Report ---



Compound 18

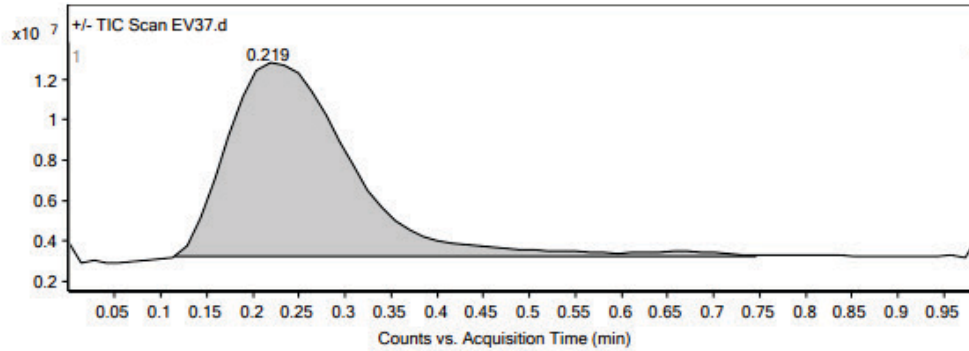


## Qualitative Analysis Report

<b>Data File</b>	EV37.d	<b>Sample Name</b>	sample
<b>Sample Type</b>	Sample	<b>Position</b>	Vial 5
<b>Instrument Name</b>	LCMS1	<b>User Name</b>	
<b>Acq Method</b>		<b>Acquired Time</b>	11/18/2019 10:32:24 AM (UTC+01:00)
<b>IRM Calibration Status</b>	Not Applicable	<b>DA Method</b>	Default Lidija.m
<b>Comment</b>		<b>Info.</b>	
<b>Sample Group</b>		<b>User Defined 2</b>	
<b>User Defined 1</b>			
<b>Acquisition Time (Local)</b>	11/18/2019 10:32:24 AM (UTC+01:00)		

## Chromatograms

Fragmentor Voltage    Collision Energy 0    Ionization Mode ESI



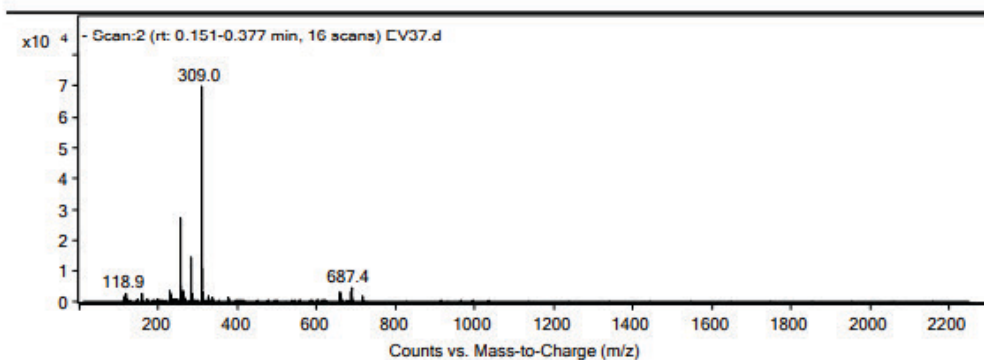
### Integration Peak List

Peak	Start	RT	End	Height	Area	Area %
1	0.116	0.219	0.746	9533648.56	88715529	100

## Spectra

Spectrum Source	Fragmentor Voltage	Collision Energy	Ionization Mode
Peak (1) in "+/- TIC Scan"		0	ESI

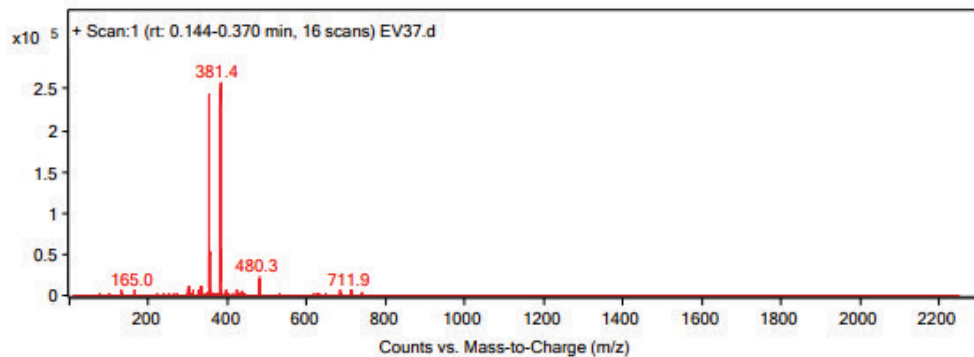
## Qualitative Analysis Report



**Peak List**

m/z	z	Abund
229.9		3382.43
255.2	1	27118.81
256.2	1	5315.1
260.8		3281.41
283.2	1	14264.1
309	1	69623.13
310	1	11034.49
311	1	3111.55
659.4	1	3021.42
687.4		4389.34

Spectrum Source	Fragmentor Voltage	Collision Energy	Ionization Mode
Peak (1) in "+/- TIC Scan"		0	ESI



**Peak List**

m/z	z	Abund
301.3		13304.45
333.2		12706.45
353.5	1	242876.73

## Qualitative Analysis Report

---

354.5	1	52277.84
355.4	1	8593.48
381.4	1	257257.52
382.5	1	54994.61
383.4	1	8746.24
424.2	1	6981.22
480.3	1	22280.4

--- End Of Report ---